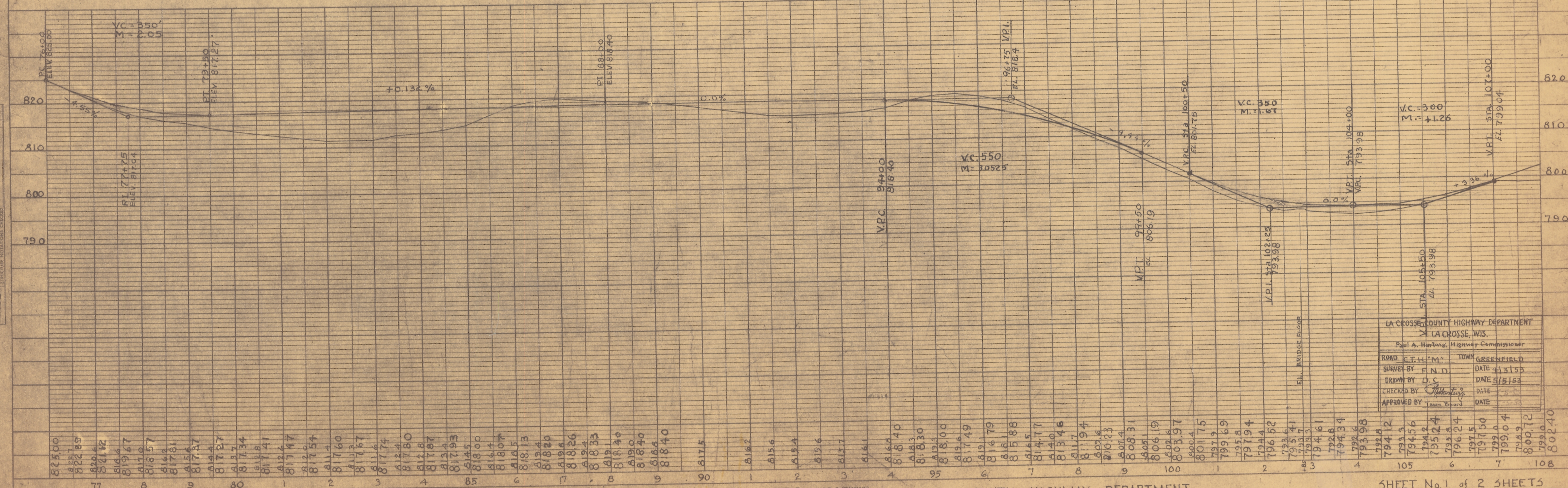
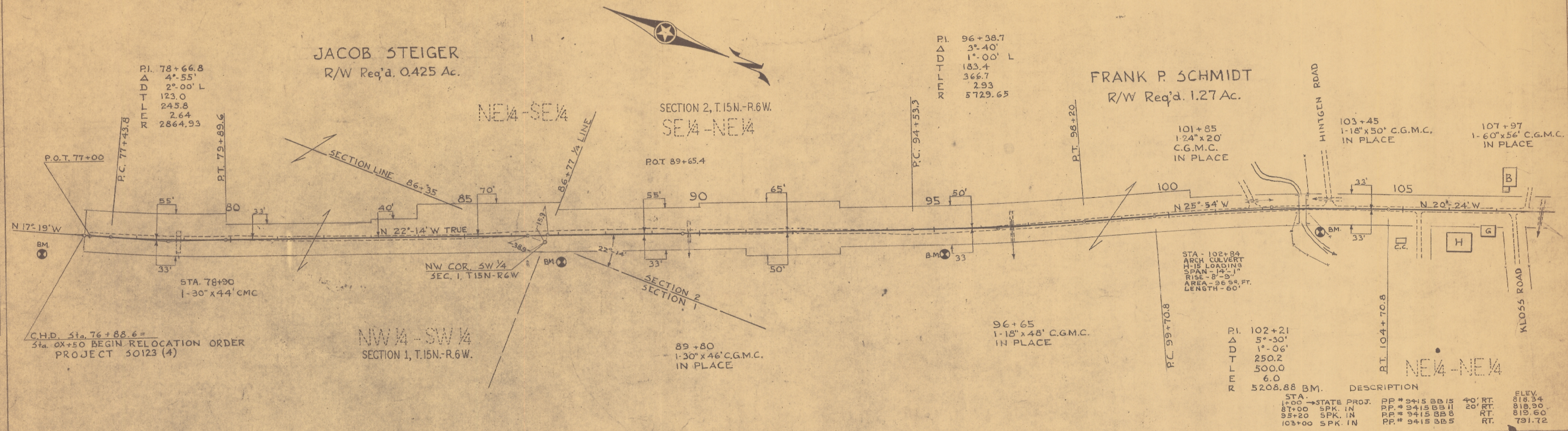


PLAN
 SURVEYED BY F.N.D. DATE 4.25.53
 NOTE BOOK ALIGNED CHECKED D.C. 5.5.53
 NO. OF WAY CHECKED No. 102

PROFILE
 SURVEYED BY F.N.D. DATE 4.25.53
 NOTE BOOK ALIGNED CHECKED D.C. 5.5.53
 SURVEYED BY F.N.D. DATE 4.25.53
 NOTE BOOK ALIGNED CHECKED D.C. 5.5.53
 NO. OF WAY CHECKED No. 103

JACOB STEIGER
 R/W Req'd. 0.425 Ac.

FRANK P. SCHMIDT
 R/W Req'd. 1.27 Ac.

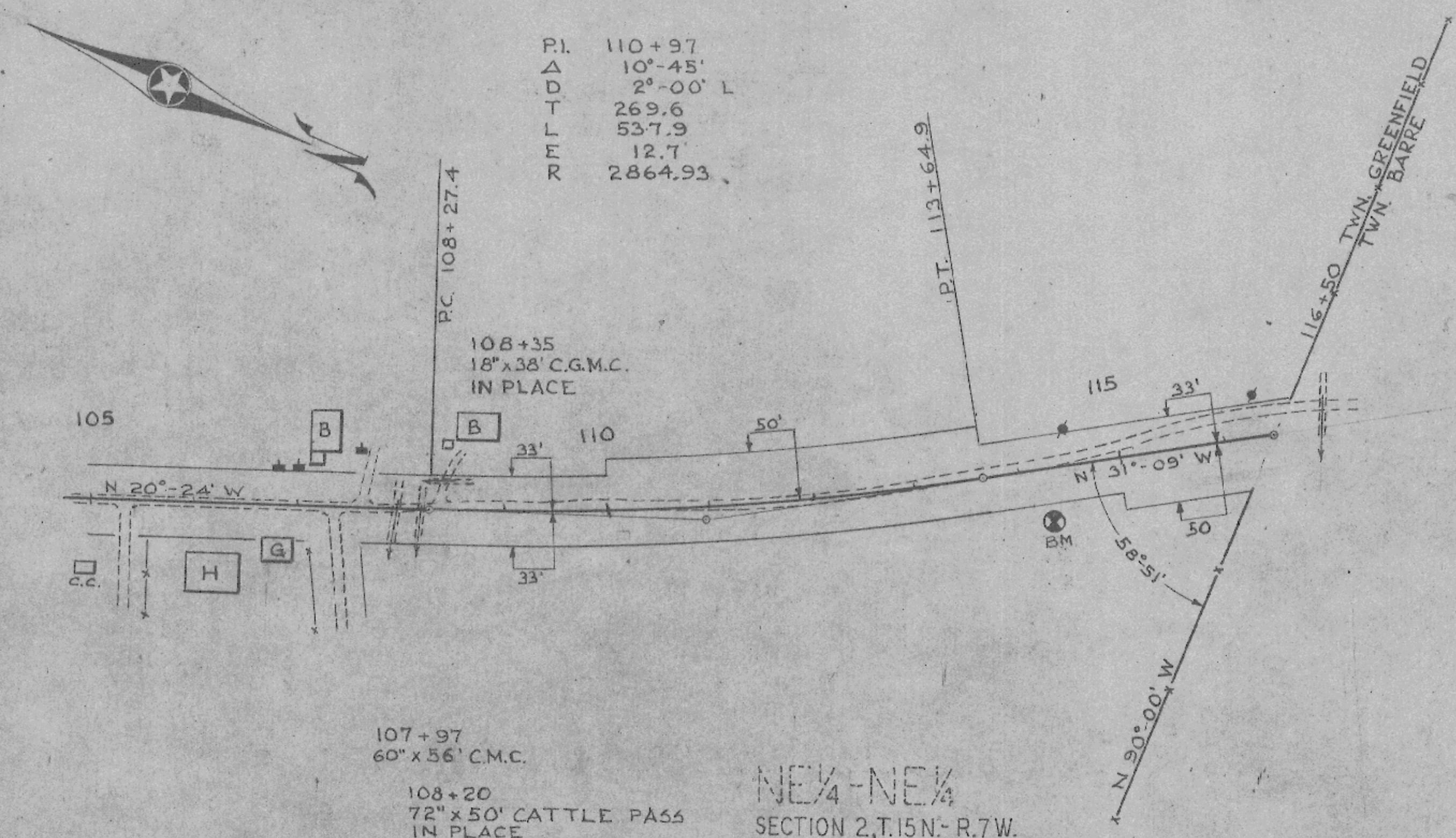


LA CROSSE COUNTY HIGHWAY DEPARTMENT
 LA CROSSE, WIS.
 Paul A. Hartwig, Highway Commissioner

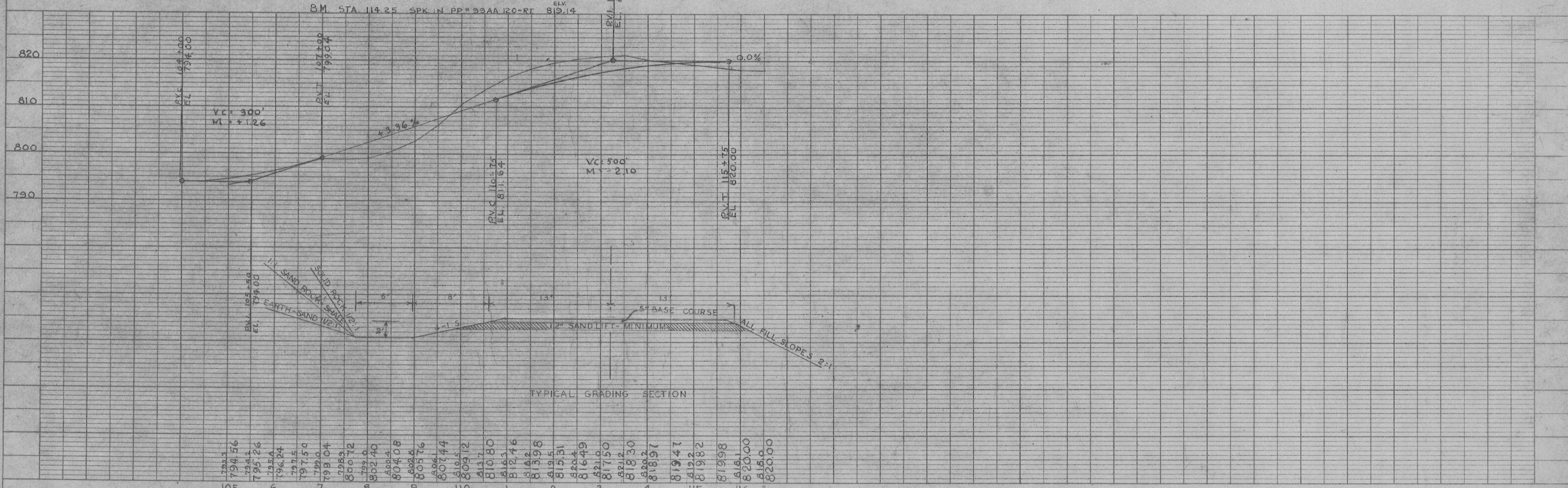
ROAD	C.T.H. "M"	TOWN	GREENFIELD
SURVEYED BY	F.N.D.	DATE	4.13.53
DRAWN BY	D.C.	DATE	5.5.53
CHECKED BY	<i>[Signature]</i>	DATE	
APPROVED BY	Town Board	DATE	

PLAN
 DRAWING NO. 102
 DATE 4.23.53
 BY D.C.
 CHECKED S.S.S.
 NOTE BOOK ARCHITECT RECORDS
 NO. OF WAY DIVISIONS

PROFILE
 DRAWING NO. 103
 DATE 4.23.53
 BY D.C.
 CHECKED S.S.S.
 NOTE BOOK ARCHITECT RECORDS
 NO. OF WAY DIVISIONS



NE $\frac{1}{4}$ -NE $\frac{1}{4}$
 SECTION 2, T.15N.-R.7W.



TOWN of GREENFIELD

C.T.H. "M" North of MASHAK BRIDGE

PLATE 1 - PLAN PROFILE O. P. R. & E. STANDARD
 THE FREDERICK POST CO., CHICAGO

LA CROSSE COUNTY HIGHWAY DEPARTMENT

SHEET No. 2 of 2 SHEETS