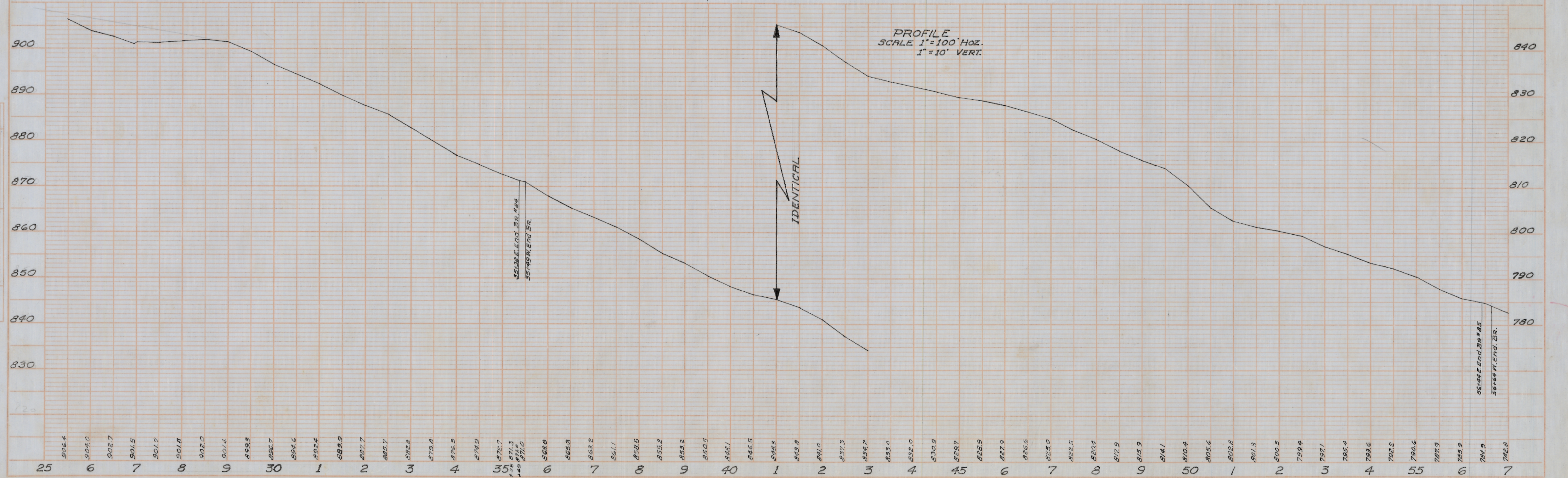
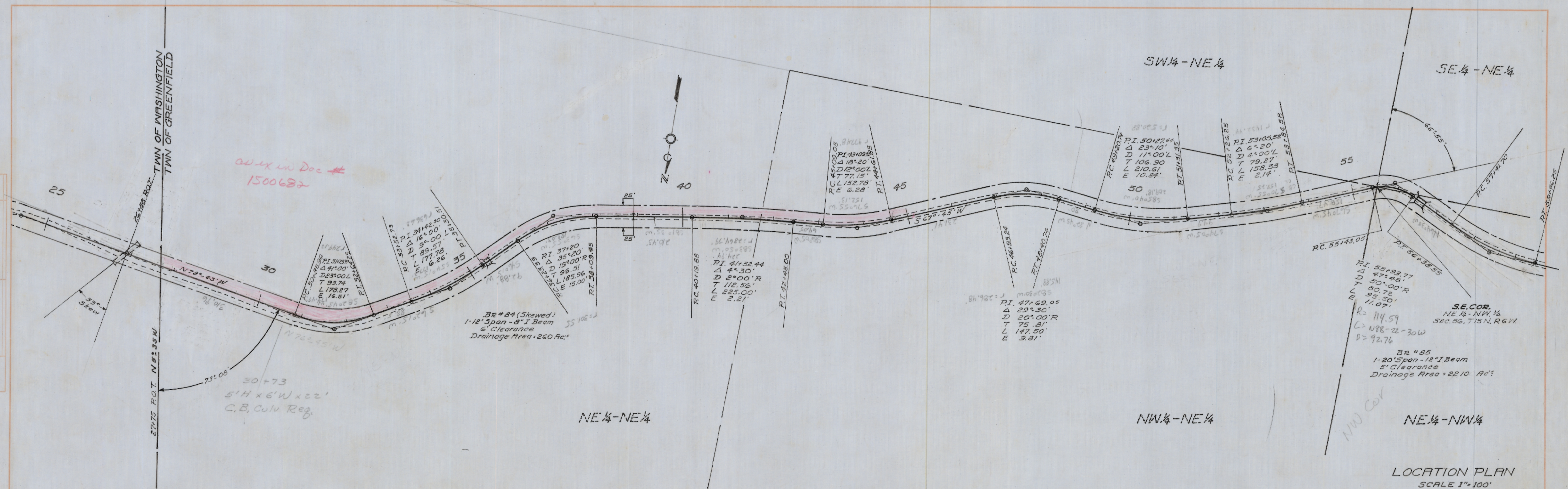


3,1E'51,59'31"E

DATE	7-2-62
BY	R.E.B.
PROJECT	PLATTED
ALIGNED	CHANGED
NOTE BOOK	NO. 105

DATE	7-2-62
BY	R.E.B.
PROJECT	PLATTED
NOTE BOOK	NO. 106



C.T.H. "NN"

PLATE 1 - PLAN-PROFILE & P. STRUCTURE

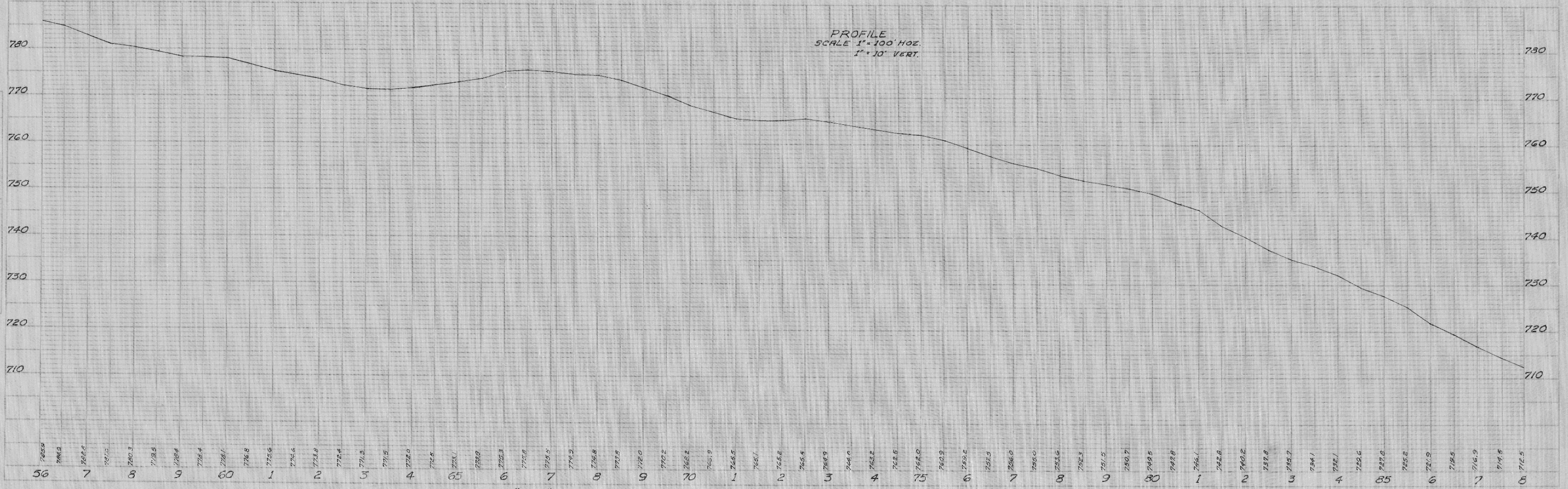
GREENFIELD

SHEET 1 OF 5

PLAN NO. 141

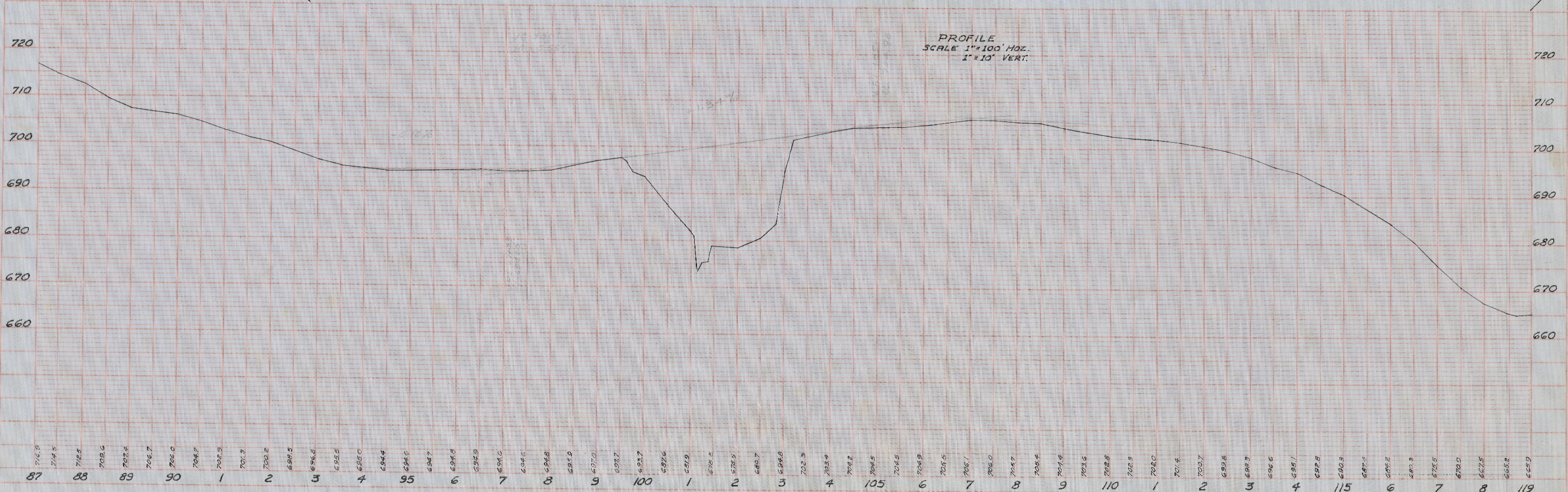
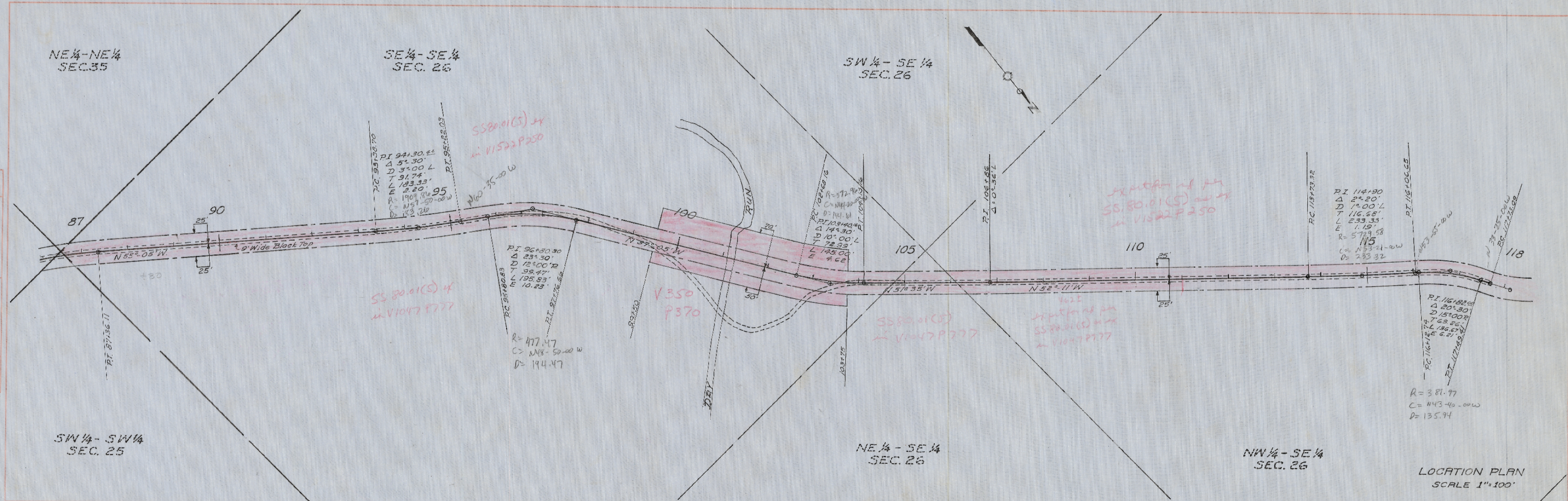
DATE: 2-28-62
 BY: R.E.B.
 CHECKED: R.E.B.
 PROJECT: 1016
 SHEET: 2 OF 5
 PLAN NO. 141

DATE: 2-2-62
 BY: J.S.M.
 CHECKED: R.E.B.
 PROJECT: 1016
 SHEET: 2 OF 5
 PLAN NO. 141



DATE: 6-23-62
 BY: REZ
 CHECKED: REZ
 TITLE: C.T.H. "NN" GREENFIELD
 SHEET NO. 3 OF 5

DATE: 6-23-62
 BY: REZ
 CHECKED: REZ
 TITLE: C.T.H. "NN" GREENFIELD
 SHEET NO. 3 OF 5

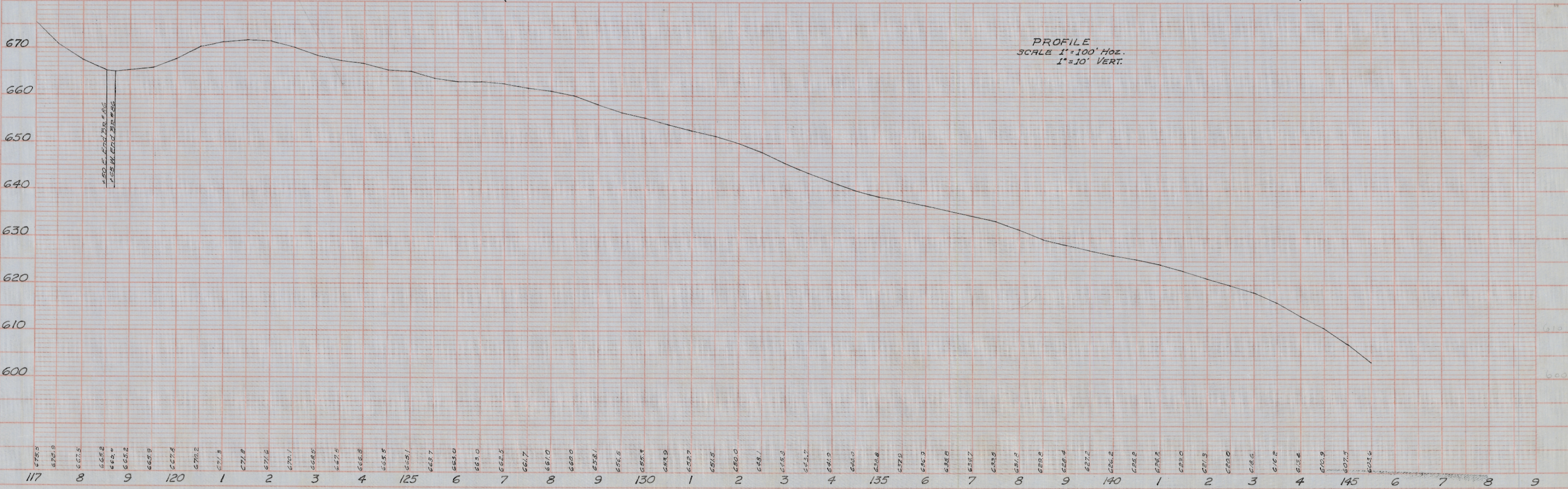
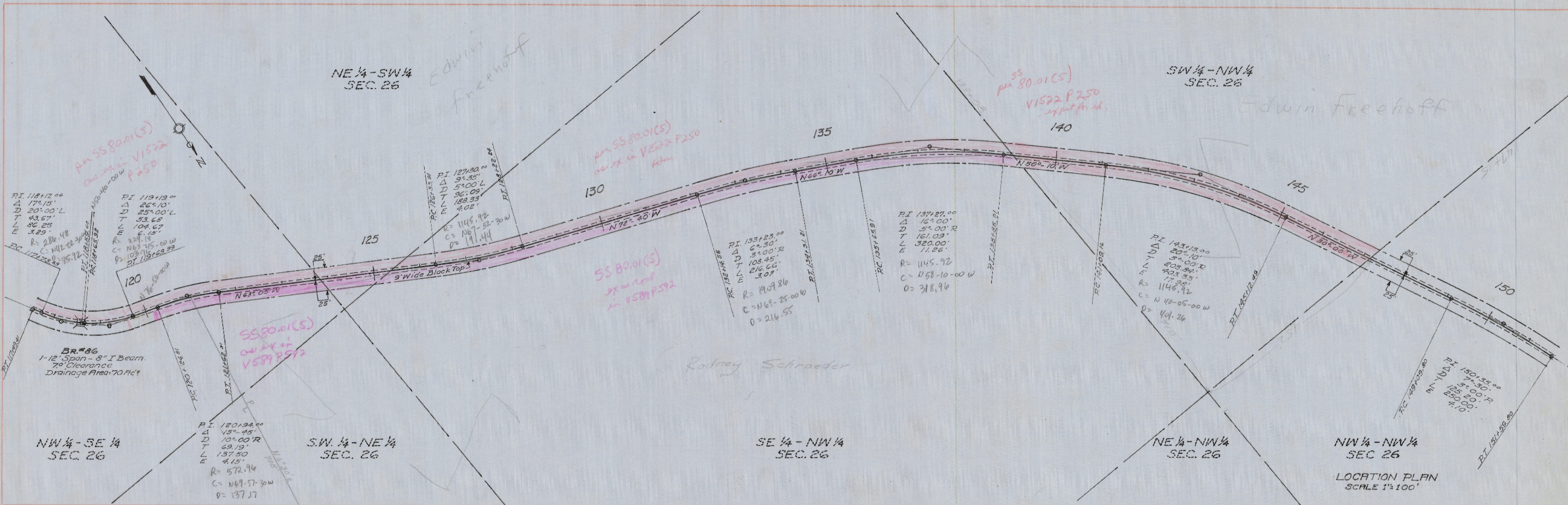


PLAN NO. 141

GREENFIELD SHEET 3 OF 5

DATE 7-5-62
 BY R.C.S.
 DRAWN R.C.S.
 CHECKED R.C.S.
 NO. 105

DATE 7-5-62
 BY R.C.S.
 DRAWN R.C.S.
 CHECKED R.C.S.
 NO. 105



DATE: 7-5-68
 BY: R.E.B.
 CHECKED: R.E.B.
 PLAN NO. 105

DATE: 7-5-68
 BY: R.E.B.
 CHECKED: R.E.B.
 PROFILE NO. 106

EDWIN FREEHOFF
 SW 1/4 - NW 1/4
 SEC. 26

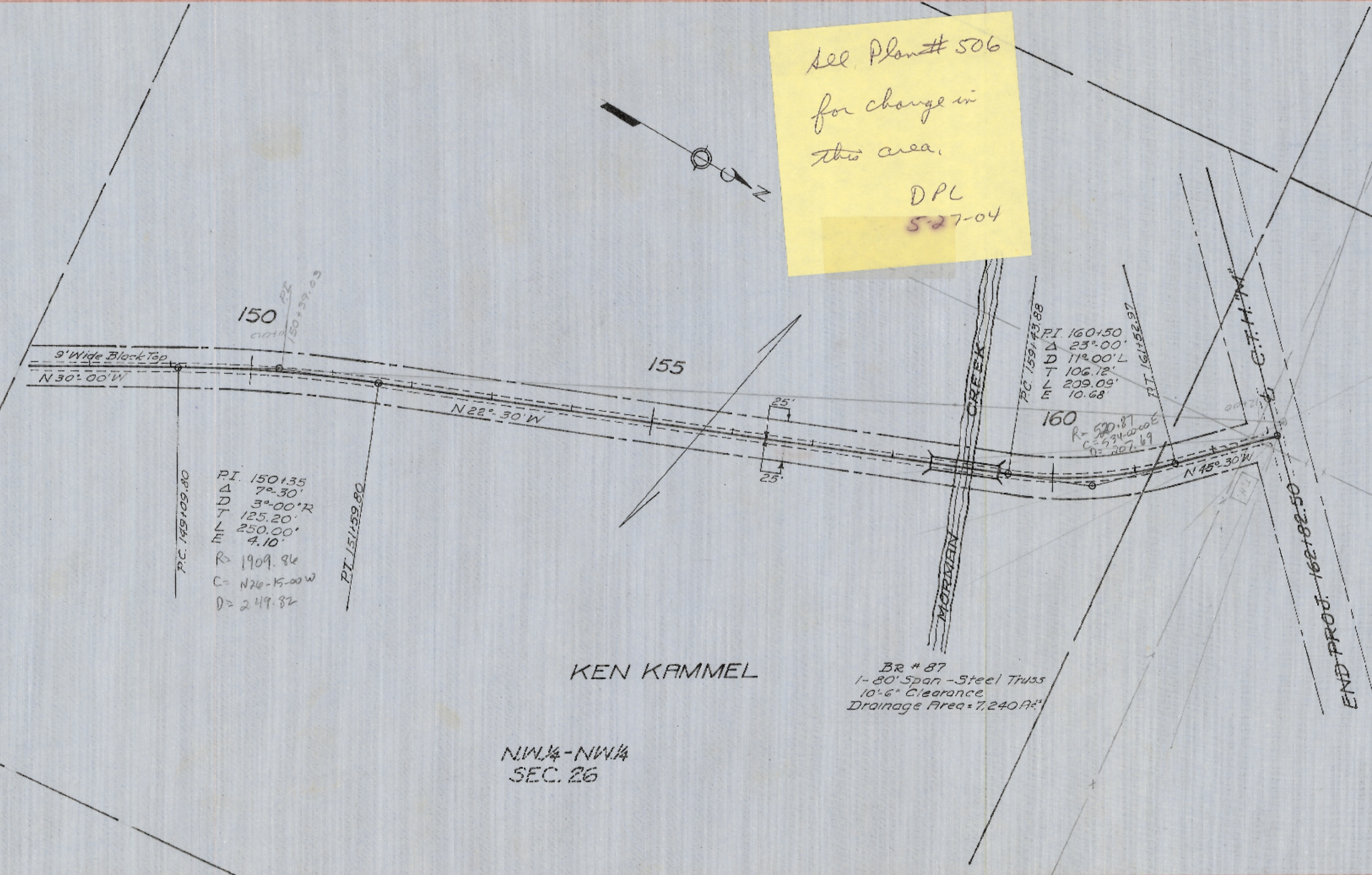
KEN KAMMEL

SE 1/4 - NW 1/4
 SEC. 26

NW 1/4 - NW 1/4
 SEC. 26

ARNOLD MEYER

See Plan # 506
 for change in
 this area.
 DPL
 5-27-04



P.C. 150+00.00
 P.I. 150+155
 Δ 7° 30'
 D 5° 00' R
 T 125.20'
 M 250.00'
 E 4.10'
 R 1909.86
 C = N26° 30' W
 D = 247.82
 P.T. 151+89.80

P.I. 160+50
 Δ 23° 00'
 D 11° 00' L
 T 106.78'
 M 209.09'
 E 10.68'
 R 520.81
 C = 234.0000
 E = 207.67

BR # 87
 1-20' Span - Steel Truss
 10'-6" Clearance
 Drainage Area = 7.240 AC

LOCATION PLAN
 SCALE 1"=100'

PROFILE
 SCALE 1"=100' Hoz.
 1"=10' VERT.

7 8 9 150 1 2 3 4 155 6 7 8 9 160 1 2 3

C.T.H. "NN"

GREENFIELD

SHEET 5 OF 5

PLAN NO. 141