

DATE	7-11-63
BY	J.S.M. R.E.B.
REVISIONS	
NO.	DESCRIPTION
1	REVISION
2	REVISION
3	REVISION
4	REVISION
5	REVISION
6	REVISION
7	REVISION
8	REVISION
9	REVISION
10	REVISION
11	REVISION
12	REVISION
13	REVISION
14	REVISION
15	REVISION
16	REVISION
17	REVISION
18	REVISION
19	REVISION
20	REVISION
21	REVISION
22	REVISION
23	REVISION
24	REVISION
25	REVISION
26	REVISION
27	REVISION
28	REVISION
29	REVISION
30	REVISION

DATE	7-11-63
BY	J.S.M. R.E.B.
REVISIONS	
NO.	DESCRIPTION
1	REVISION
2	REVISION
3	REVISION
4	REVISION
5	REVISION
6	REVISION
7	REVISION
8	REVISION
9	REVISION
10	REVISION
11	REVISION
12	REVISION
13	REVISION
14	REVISION
15	REVISION
16	REVISION
17	REVISION
18	REVISION
19	REVISION
20	REVISION
21	REVISION
22	REVISION
23	REVISION
24	REVISION
25	REVISION
26	REVISION
27	REVISION
28	REVISION
29	REVISION
30	REVISION

SAMUEL SKEMP
SE 1/4 - SE 1/4
SEC. 21, T15N, R6W

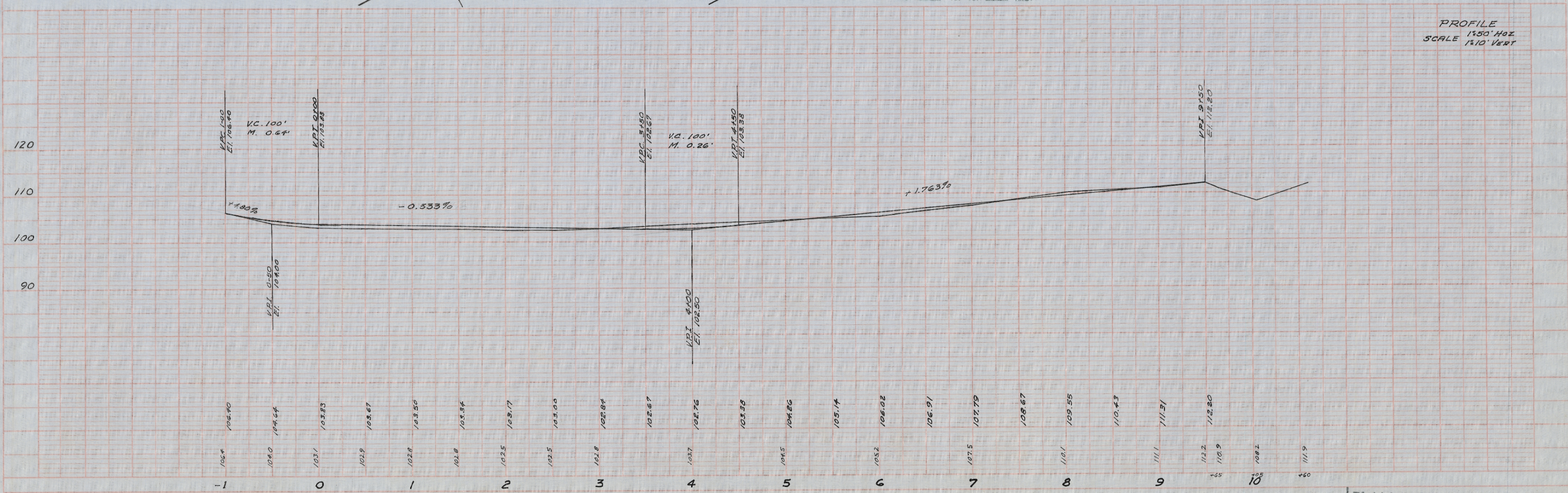
PI 4+75.0
Δ 24° 50'
D 4° 00' L
T 315.46'
L 620.85'
E 34.31'

HELEN & BERNARD THIELE
SW 1/4 - SW 1/4
SEC. 22, T15N, R6W

EXCAVATION EMBANKMENT
END CU. CU. END
AREA 1134 YD. YD. 930 AREA

LOCATION PLAN
SCALE 1"=50'

PROFILE
1"=50' HORZ
SCALE 1"=10' VERT



SCHMALTZ ROAD

GREENFIELD

PLAN NO. 370