

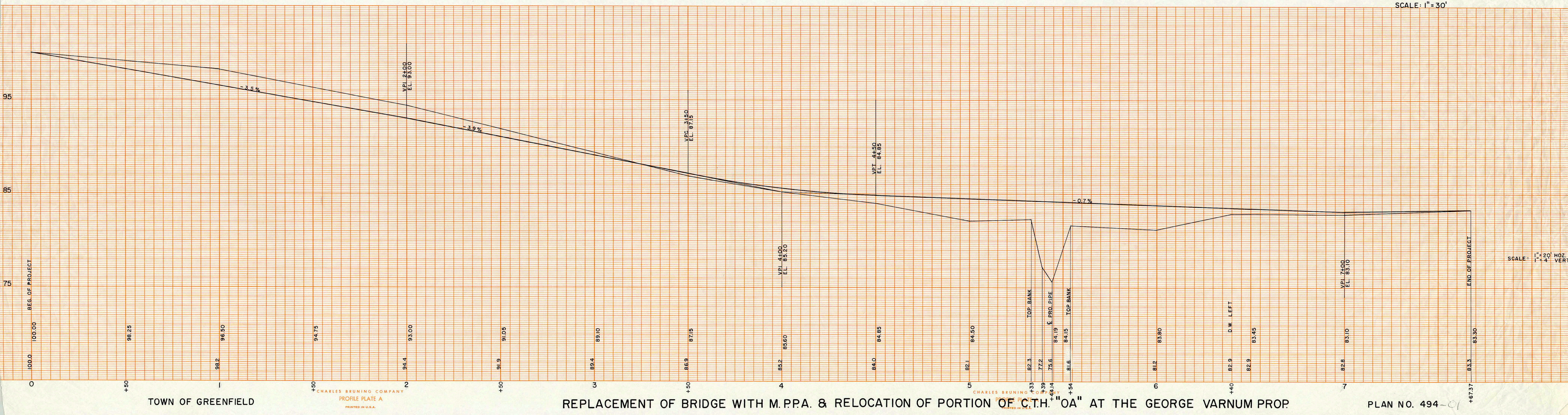
P.I.	3+44.40
Δ	23° 00' R
D	9° 00'
T	129.66'
L	255.56'
E	13.04'
R	637.27'

1/2 Δ 11° 50'
N 19° 57' W
254.1'

STA. 5+44.14
 6' 1" R X 8' 10" S X 56"
 10 GAGE M.P.P.A.

SE COR.
 NE-SE
 SEC. 5, T.15N., R.6W.

SCALE: 1" = 30'



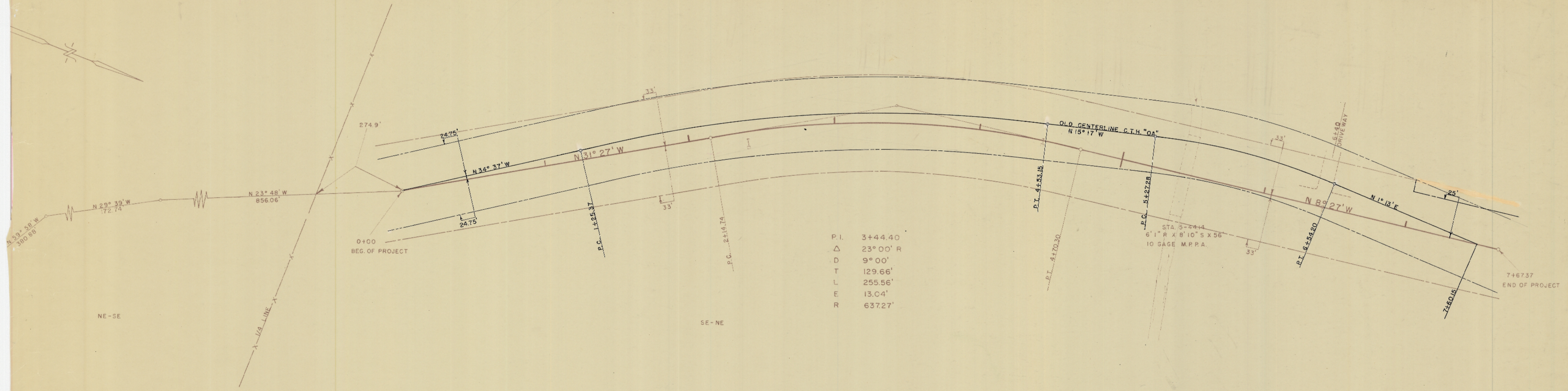
SCALE: 1" = 20' HOZ.
 1" = 4' VERT.

TOWN OF GREENFIELD

CHARLES BRUNING COMPANY
 PROFILE PLATE A
 PRINTED IN U.S.A.

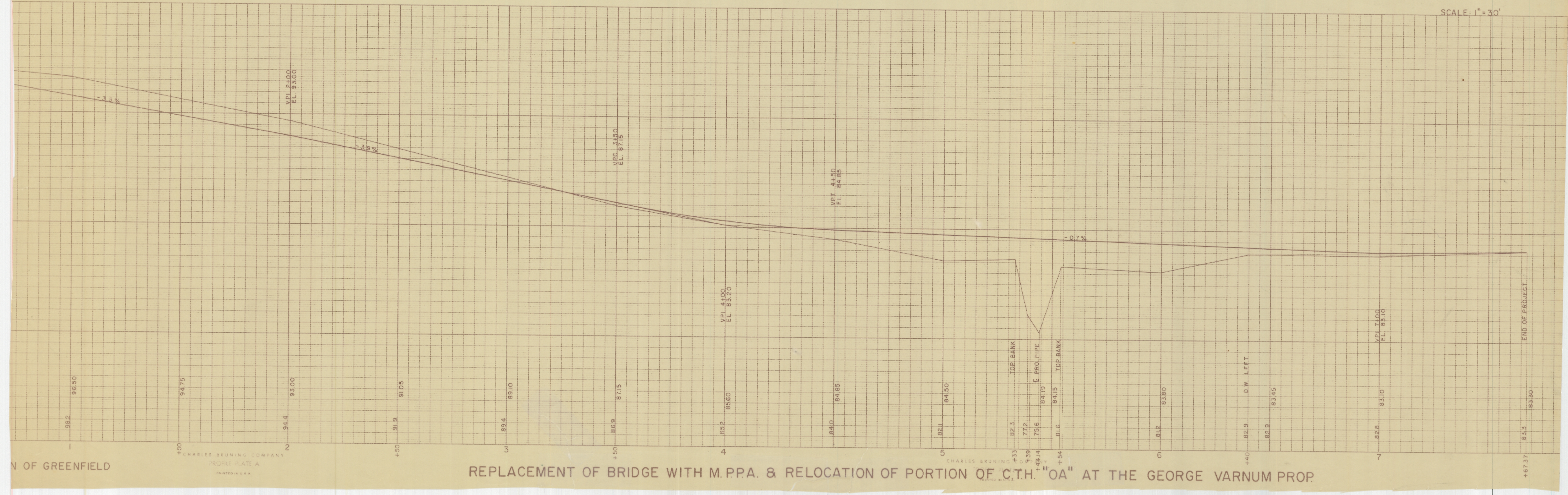
REPLACEMENT OF BRIDGE WITH M.P.P.A. & RELOCATION OF PORTION OF C.T.H. "OA" AT THE GEORGE VARNUM PROP.

PLAN NO. 494-01



P.I.	3+444.40
Δ	23° 00' R
D	9° 00'
T	129.66'
L	255.56'
E	13.04'
R	637.27'

SCALE: 1" = 30'



REPLACEMENT OF BRIDGE WITH M.P.P.A. & RELOCATION OF PORTION OF C.T.H. "OA" AT THE GEORGE VARNUM PROP.