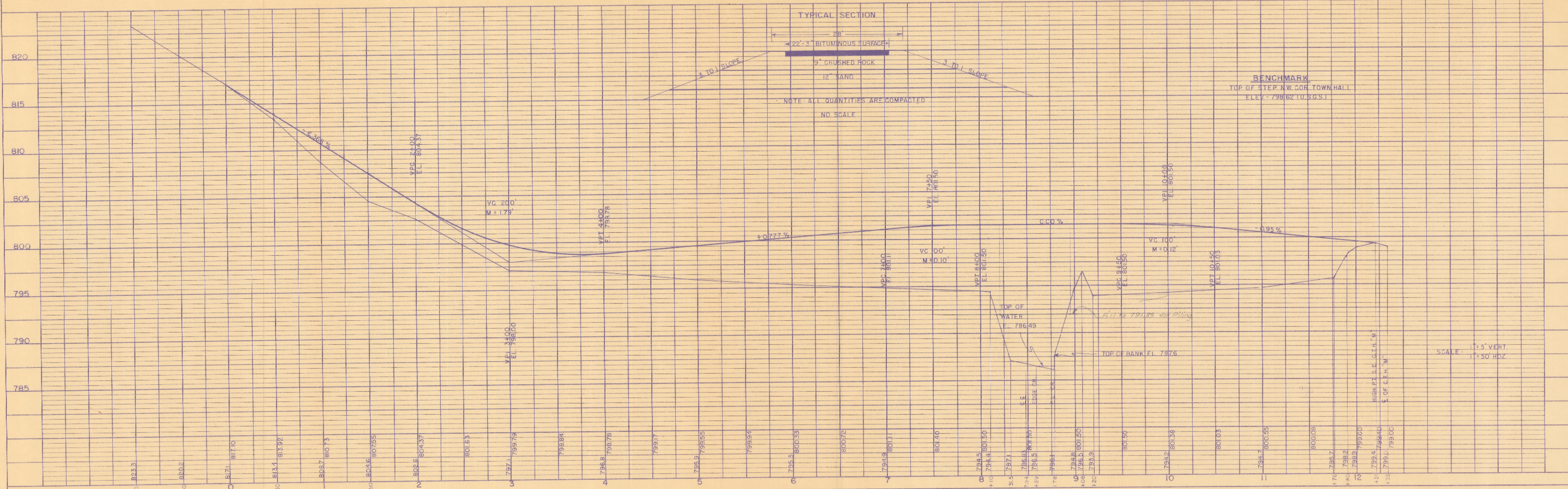
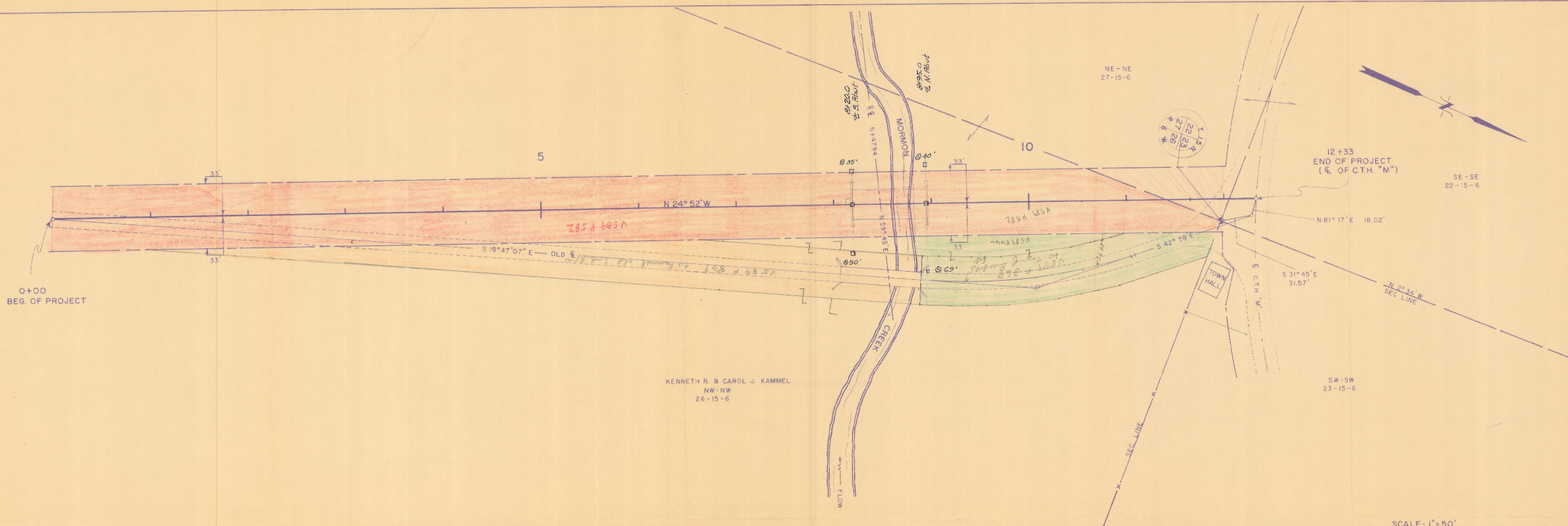


PLAN
 SURVEYED BY R. E. B. L. E. H.
 DATE 3/23/77
 NOTE BOOK ALIGNMENT CHECKED
 No. 103
 STRUCTURE INSTANTIONS CHECKED

PROFILE
 SURVEYED BY R. E. B. L. E. H.
 DATE 3/23/77
 NOTE BOOK GRADE CHECKED
 No. 110
 STRUCTURE INSTANTIONS CHECKED



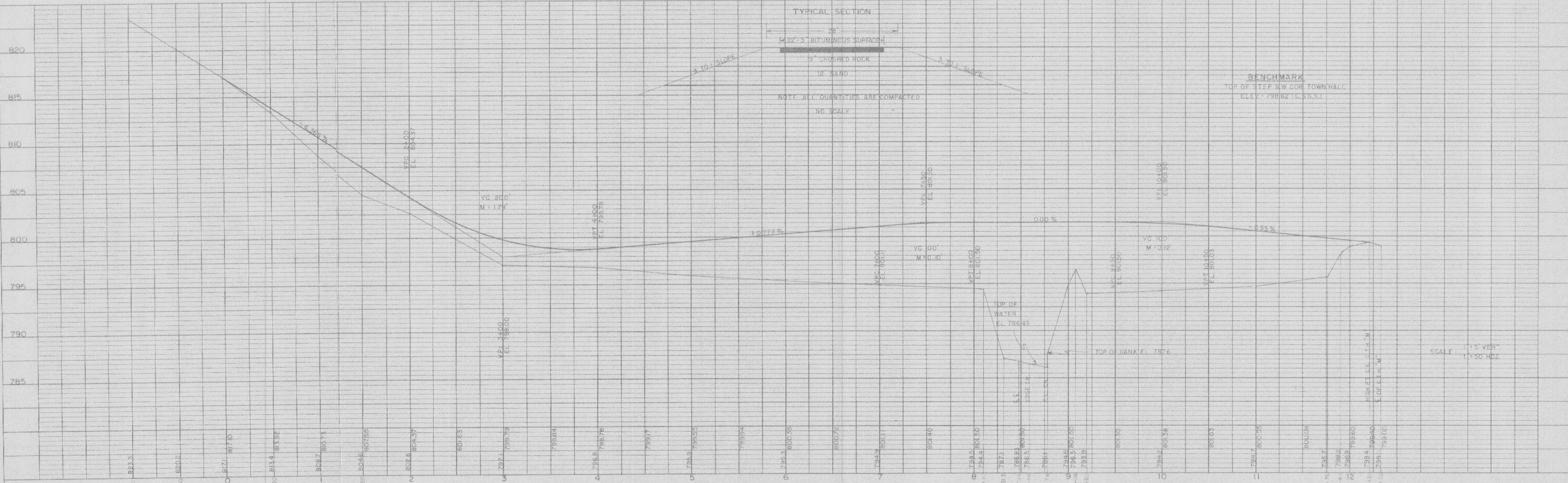
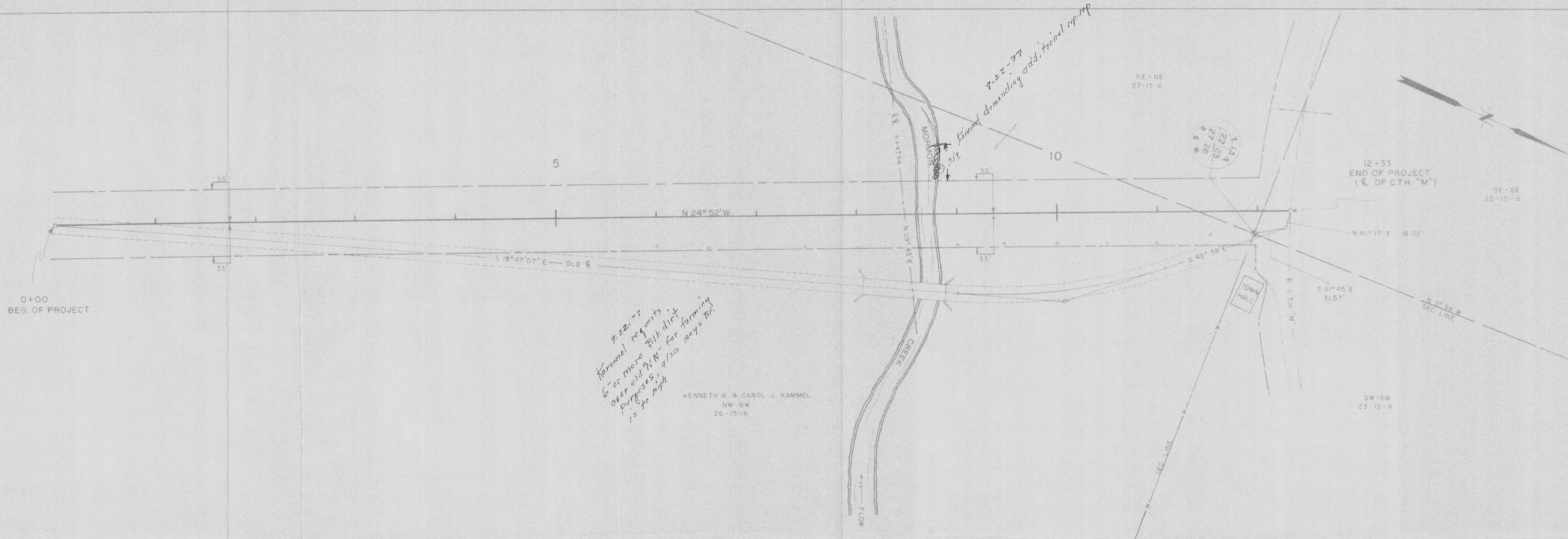
TOWN OF GREENFIELD

PLATE 1-PLAN PROFILE O. P. H. E. STAND. NO. NN 11
 THE FREDERICK COMPANY CHICAGO

PLAN NO. 506

DATE: 3/27/77
 BY: R.E.B.
 CHECKED: L.E.H.
PLAN
 SUPERVISOR: [Signature]
 DRAWN: S.L.B.
 CHECKED: L.E.H.
 NOTE BOOK: [Signature]
 NO. 103
 STRUCTURE NOTATIONS CHECKED: [Signature]

DATE: 3/27/77
 BY: R.E.B.
 CHECKED: L.E.H.
PROFILE
 SUPERVISOR: [Signature]
 DRAWN: S.L.B.
 CHECKED: L.E.H.
 NOTE BOOK: [Signature]
 NO. 110
 STRUCTURE NOTATIONS CHECKED: [Signature]



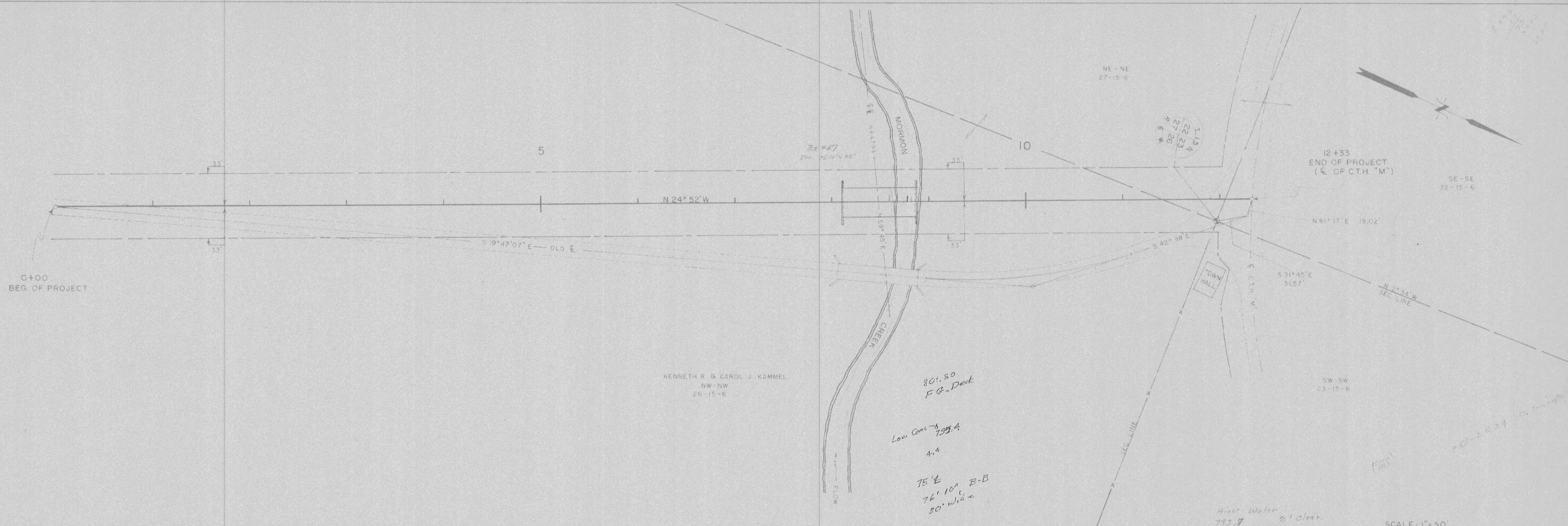
TOWN OF GREENFIELD

PLATE 1 - PLAN PROFILE OF CTH E. STANDARD "NN"

PLAN NO. 506

DATE: 3/9/77
 BY: R.E.B. L.E.H.
 SUPERVISOR: R.E.B. L.E.H.
 CHECKED: R.E.B. L.E.H.
 PLAN NO. 106

DATE: 3/9/77
 BY: R.E.B. L.E.H.
 SUPERVISOR: R.E.B. L.E.H.
 CHECKED: R.E.B. L.E.H.
 PROFILE NO. 110



KENNETH R. & CAROL J. KAMMEL
 NW-NW
 26-15-6

801.50
 F.G. Deck
 Low Conc. - 793.4
 4.4
 75'±
 36'± 10" B-B
 30'± wide

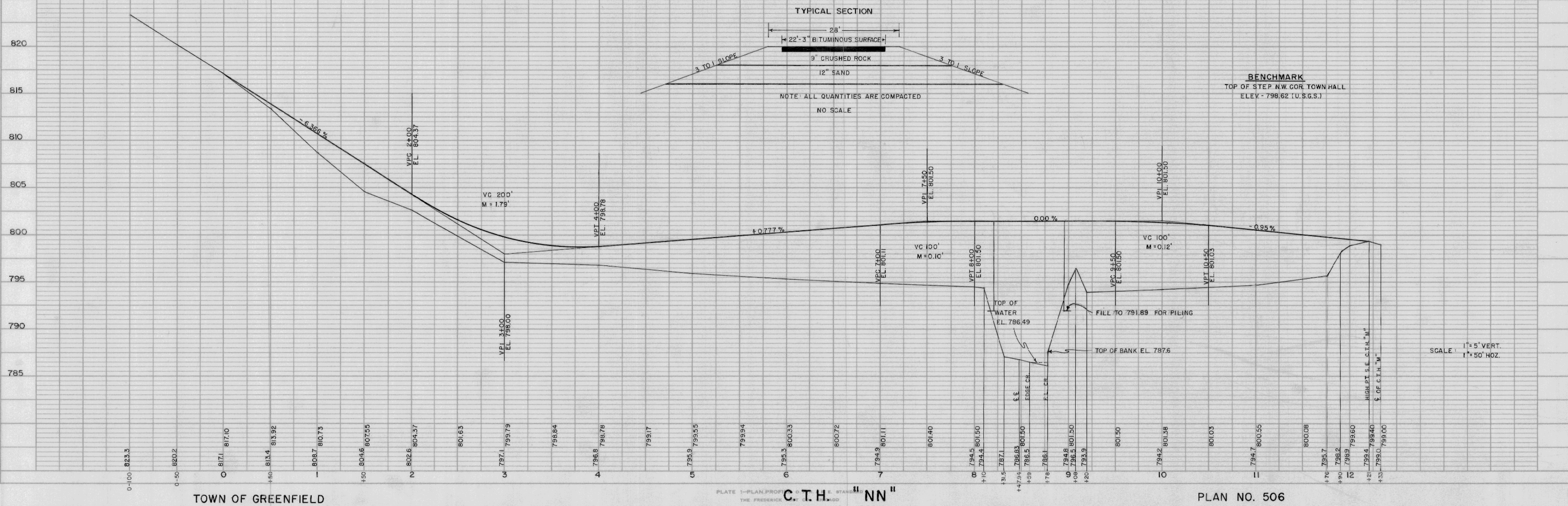
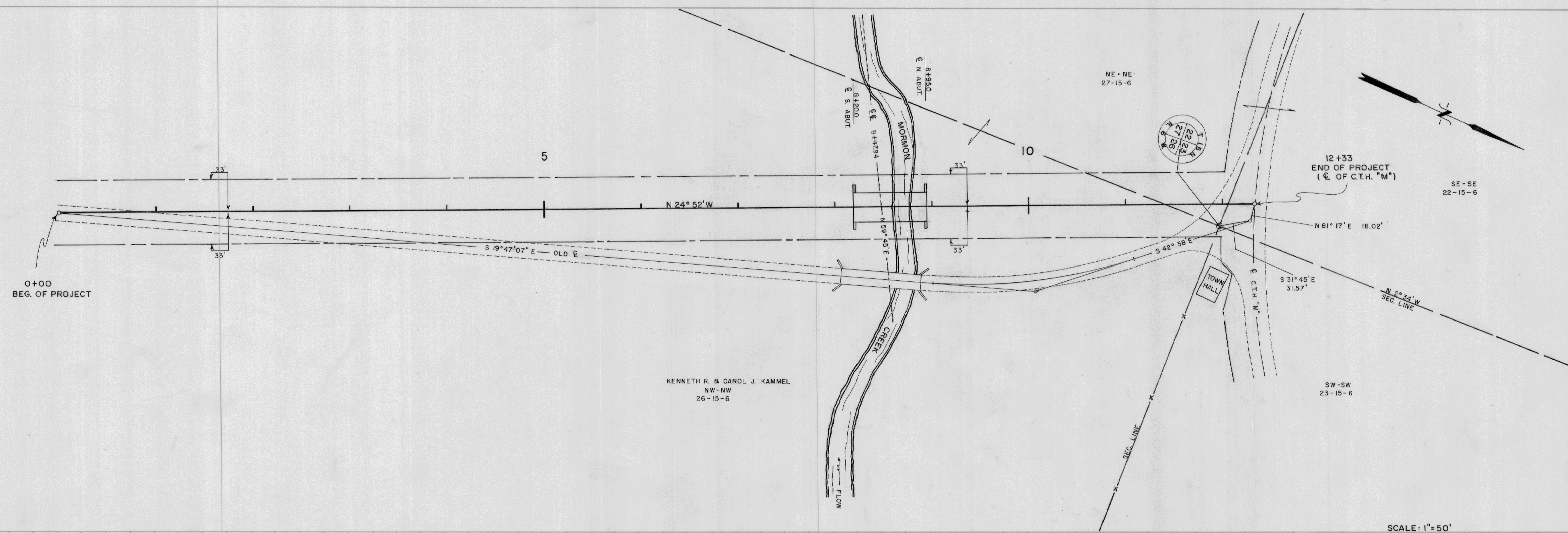
High Water
 793.9
 2' Clear

SCALE: 1" = 50'



DATE: 3/9/77
 BY: R.E.B.
 L.E.H.
 SURVEYED: 3/28/77
 NOTED: 3/28/77
 NOTE BOOK: 328777
 No. 109

DATE: 3/9/77
 BY: R.E.B.
 L.E.H.
 SURVEYED: 3/28/77
 NOTED: 3/28/77
 NOTE BOOK: 328777
 No. 110

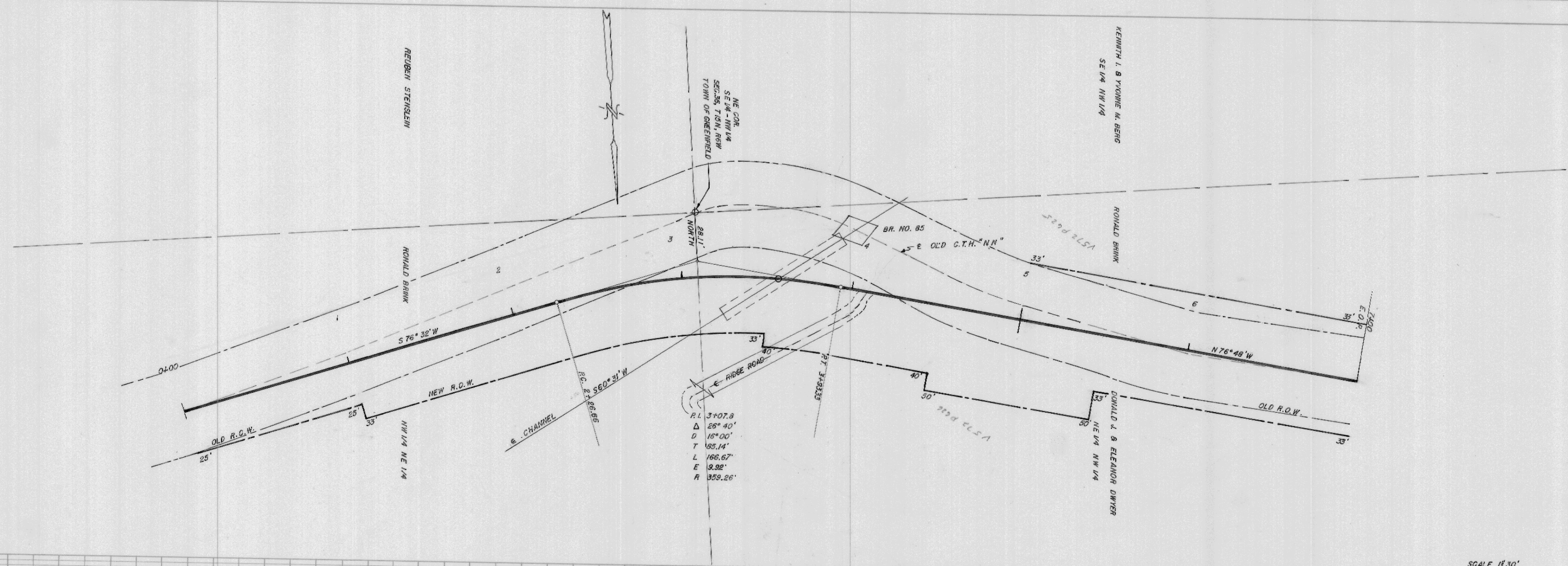


TOWN OF GREENFIELD

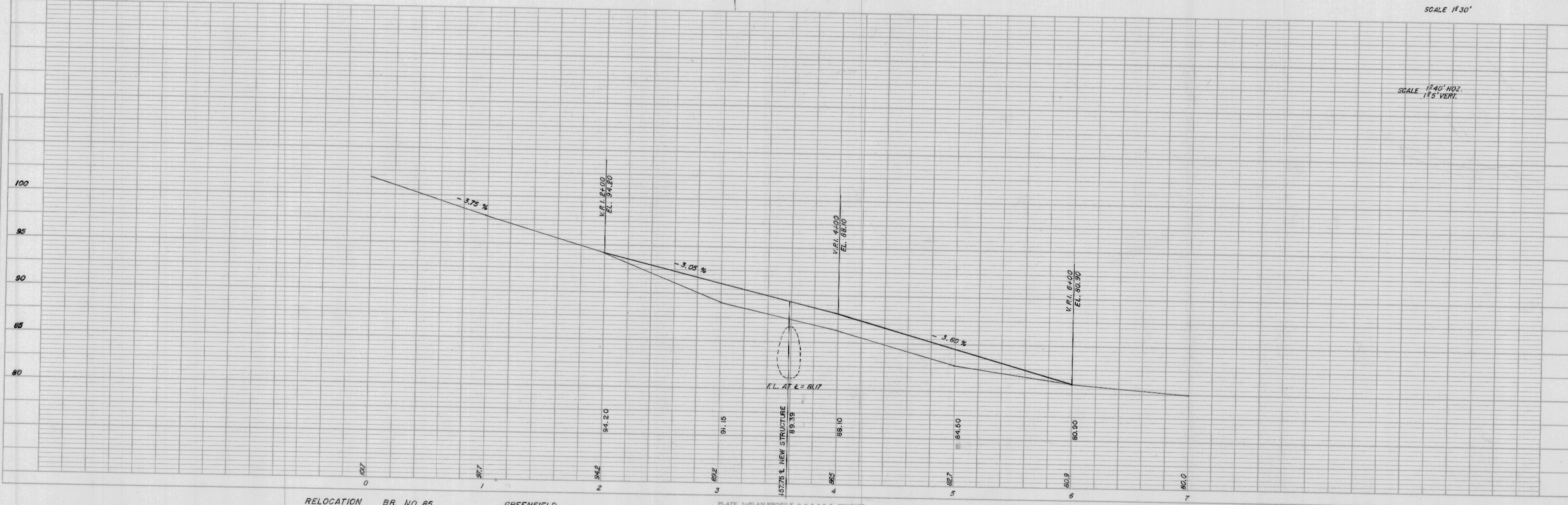
PLATE 1-PLAN, PROFILE & ELEVATIONS
 THE FREDERICK ENGINEERING COMPANY
 C.T.H. "M"

PLAN
 DRAWN BY: R.E.B.
 CHECKED BY: J.H.
 DATE: 3-6-76
 NO. F-58
 NOTE BOOK ALIGNMENT CHECKED BY: J.H.
 STRUCTURE NOTATIONS CHECKED BY: J.H.

PROFILE
 DRAWN BY: R.E.B.
 CHECKED BY: J.H.
 DATE: 3-6-76
 NO. F-100
 NOTE BOOK GRADE CHECKED BY: J.H.
 STRUCTURE NOTATIONS CHECKED BY: J.H.



SCALE 1"=30'



SCALE 1"=40' HORIZ. 1"=5' VERT.

RELOCATION BR. NO. 85

GREENFIELD

PLATE 1-PLAN/PROFILE O.P.R.S.E. STANDARD THE FREDERICK POST CO., CHICAGO

C. T. H. "NN"

PLAN NO. 497