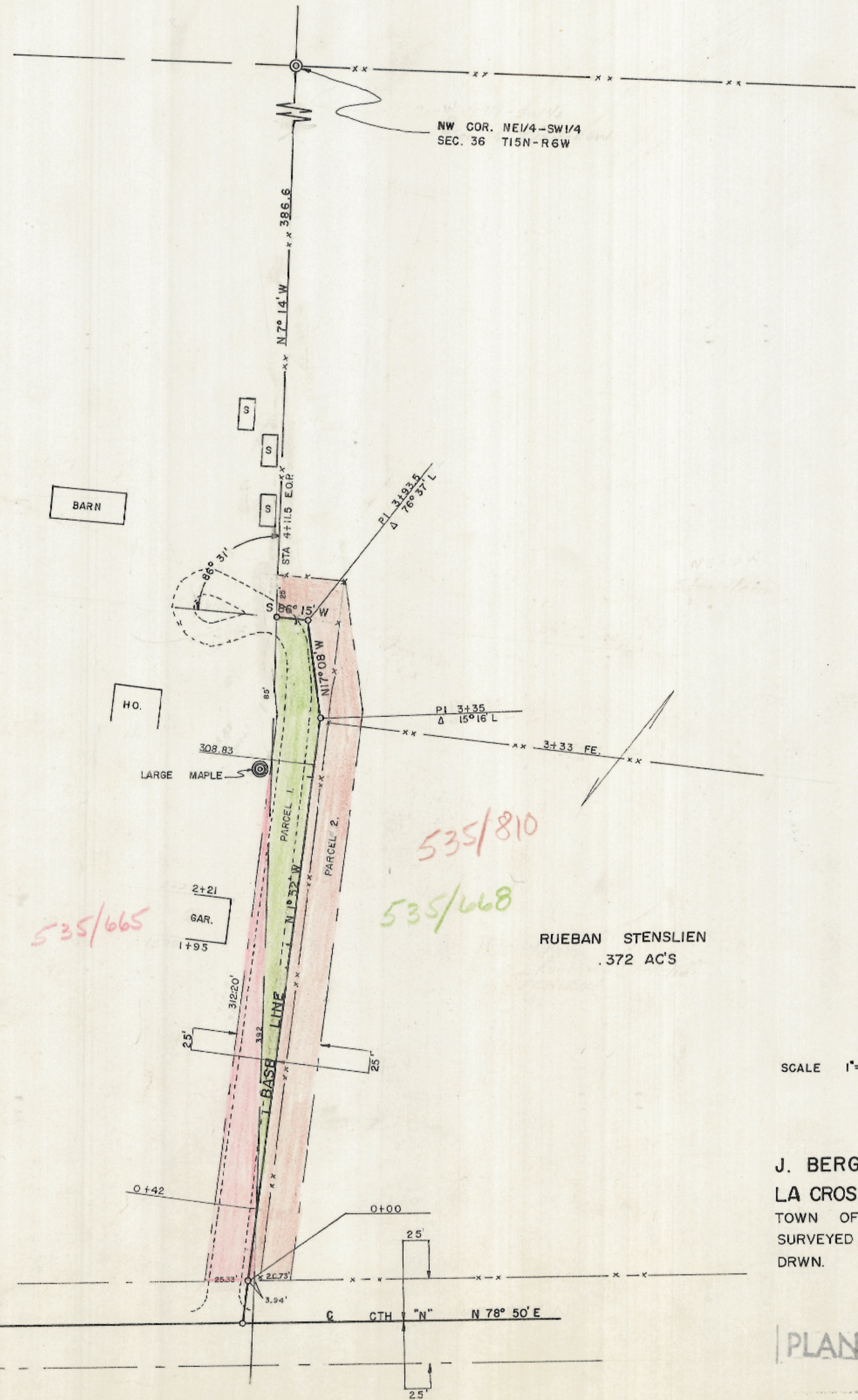




KENNETH I. & YVONNE M. BERG
 NW1/4 - SW1/4
 SEC. 36, T15N-R6W



535/665

535/810

535/668

RUEBAN STENSLIEN
 .372 AC'S

SCALE 1" = 50'

J. BERG RD.
 LA CROSSE COUNTY HWY. DEPT.
 TOWN OF GREENFIELD
 SURVEYED R.E.B. 1-24-73
 DRWN. P.W.J. 1-25-73

PLAN NO. 612