

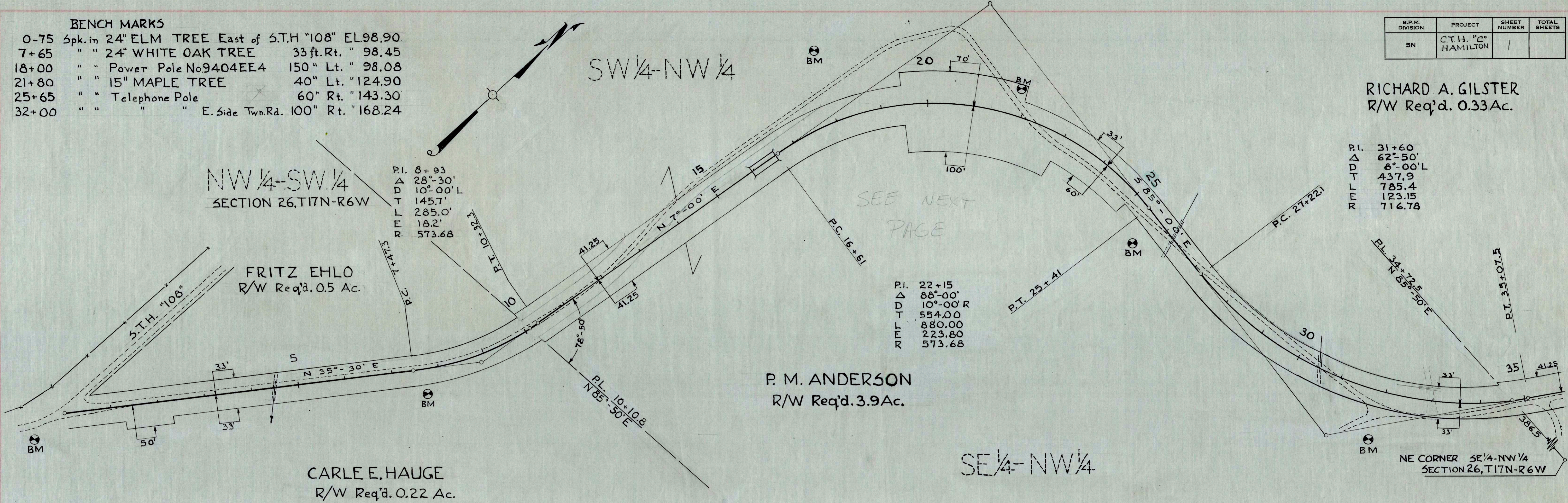
BENCH MARKS

0-75	Spk. in 24" ELM TREE East of S.T.H "108"	EL. 98.90
7+65	" " 24" WHITE OAK TREE	33 ft. Rt. " 98.45
18+00	" " Power Pole No. 9404EE4	150" Lt. " 98.08
21+80	" " 15" MAPLE TREE	40" Lt. " 124.90
25+65	" " Telephone Pole	60" Rt. " 143.30
32+00	" " " E. Side Twp. Rd. 100" Rt. "	168.24

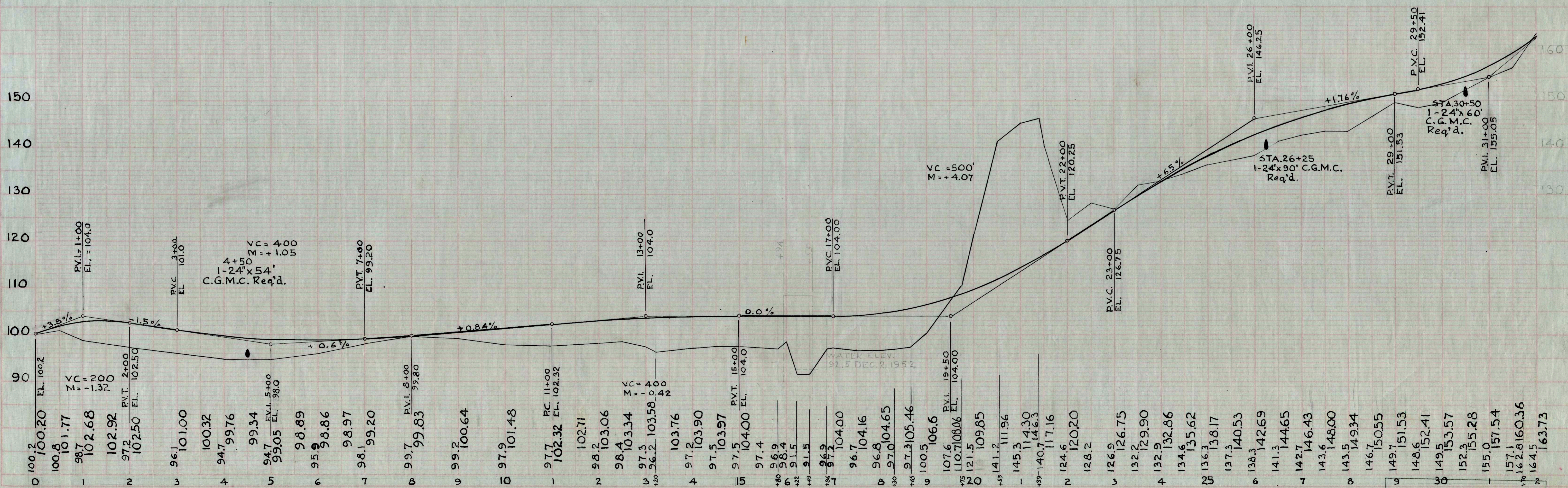
B.P.R. DIVISION	PROJECT	SHEET NUMBER	TOTAL SHEETS
5N	C.T.H. "C" HAMILTON	1	

RICHARD A. GILSTER
R/W Req'd. 0.33 Ac.

3-1-51
 3-31-51
 F.I.N.D.
 D.C.
 113



3-3-51
 3-31-51
 F.I.N.D.
 D.C.
 114



PLAN NO. 146

BENCH MARKS

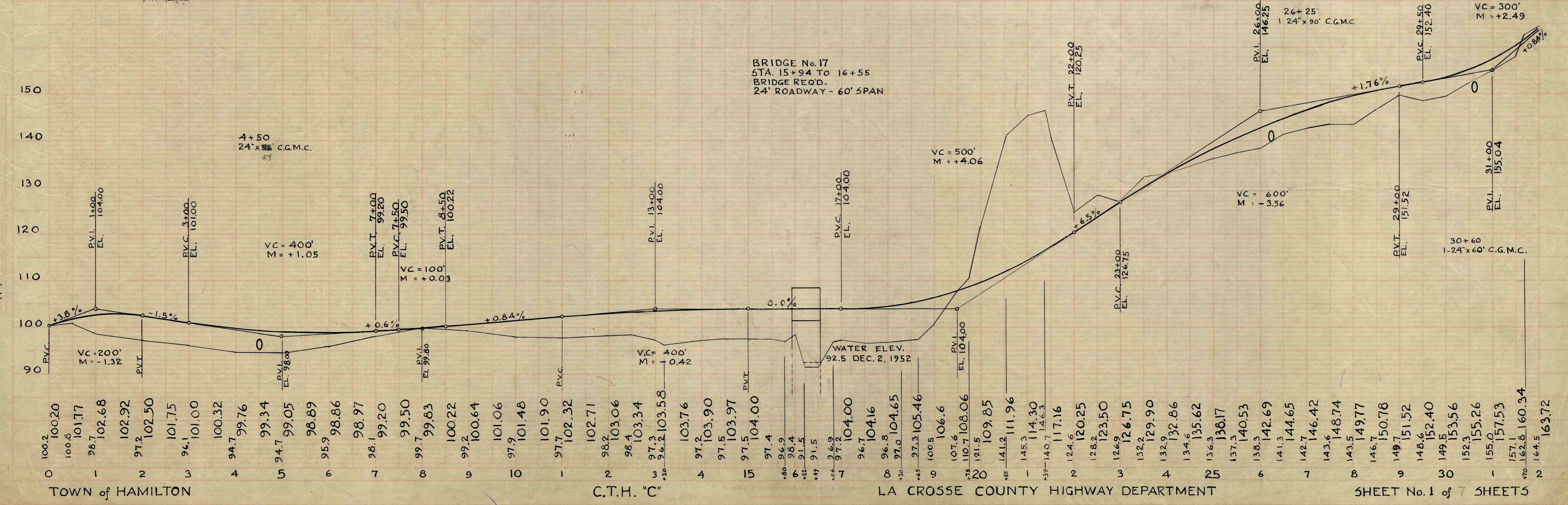
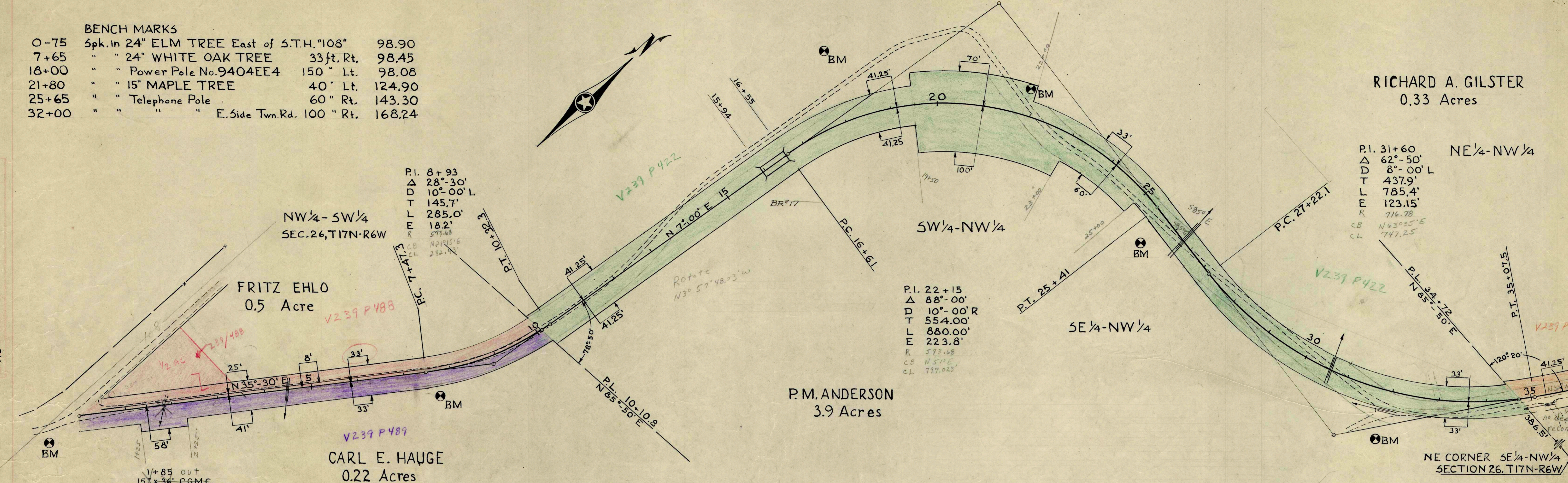
0-75	Spk. in 24" ELM TREE East of S.T.H. "108"	98.90
7+65	" " 24" WHITE OAK TREE	33ft. Rt. 98.45
18+00	" " Power Pole No. 9404EE4	150 " Lt. 98.08
21+80	" " 15" MAPLE TREE	40 " Lt. 124.90
25+65	" " Telephone Pole	60 " Rt. 143.30
32+00	" " " " E. Side Twn Rd. 100 " Rt.	168.24

RICHARD A. GILSTER
0.33 Acres

P.I. 31+60
 Δ 62°-50'
 D 8°-00' L
 T 437.9'
 L 785.4'
 E 123.15'
 R 714.78
 CB N 63°35' E
 CL 747.25

P.I. 22+15
 Δ 88°-00'
 D 10°-00' R
 T 554.00'
 L 880.00'
 E 223.8'
 R 573.68
 CB N 51° E
 CL 777.023'

P.I. 8+93
 Δ 28°-30'
 D 10°-00' L
 T 145.7'
 L 285.0'
 E 18.2'
 R 573.68
 CB N 21°15' E
 CL 282.14'



3-1-51
 3-3-51
 F.N.D.
 D.C.
 113

3-3-51
 3-3-51
 F.N.D.
 D.C.
 114

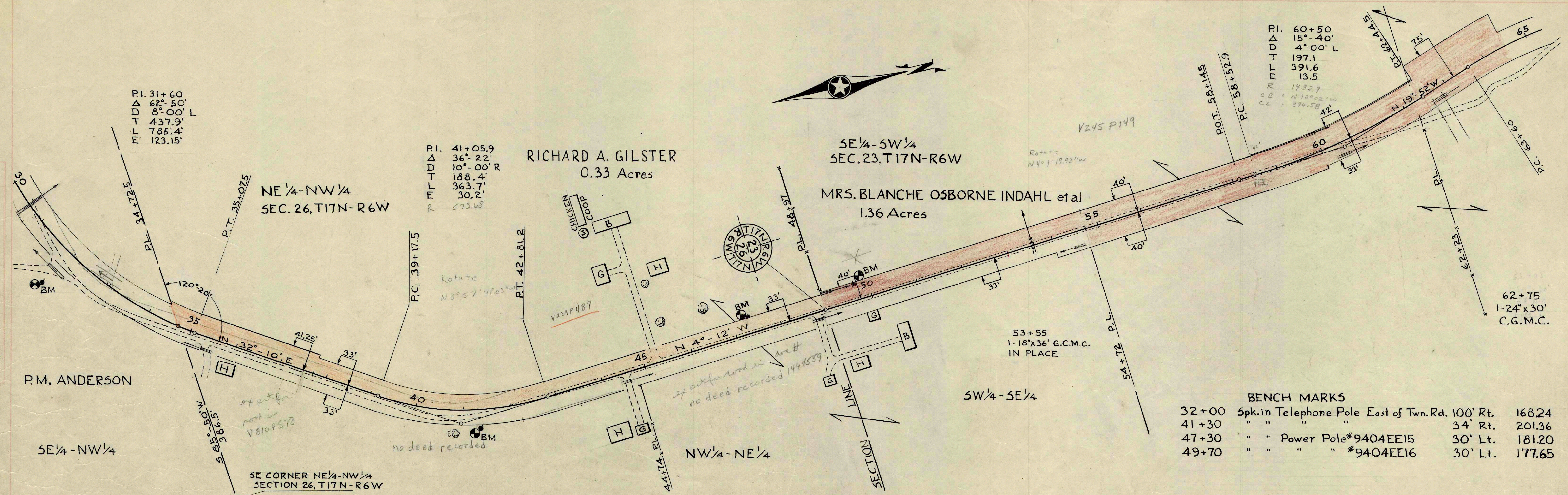
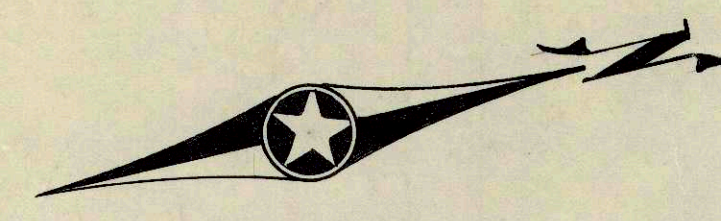
146

8-24-52
11-10-52
F.N.D.
D.C.

113

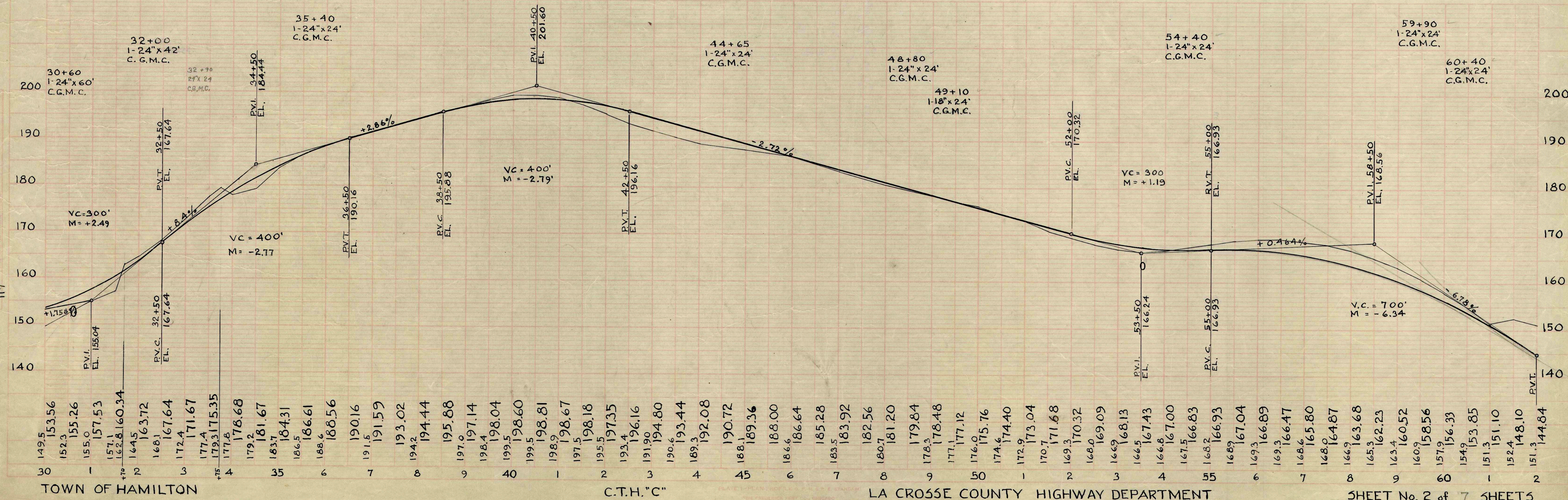
11-3-52
11-10-52
F.N.D.
D.C.

114



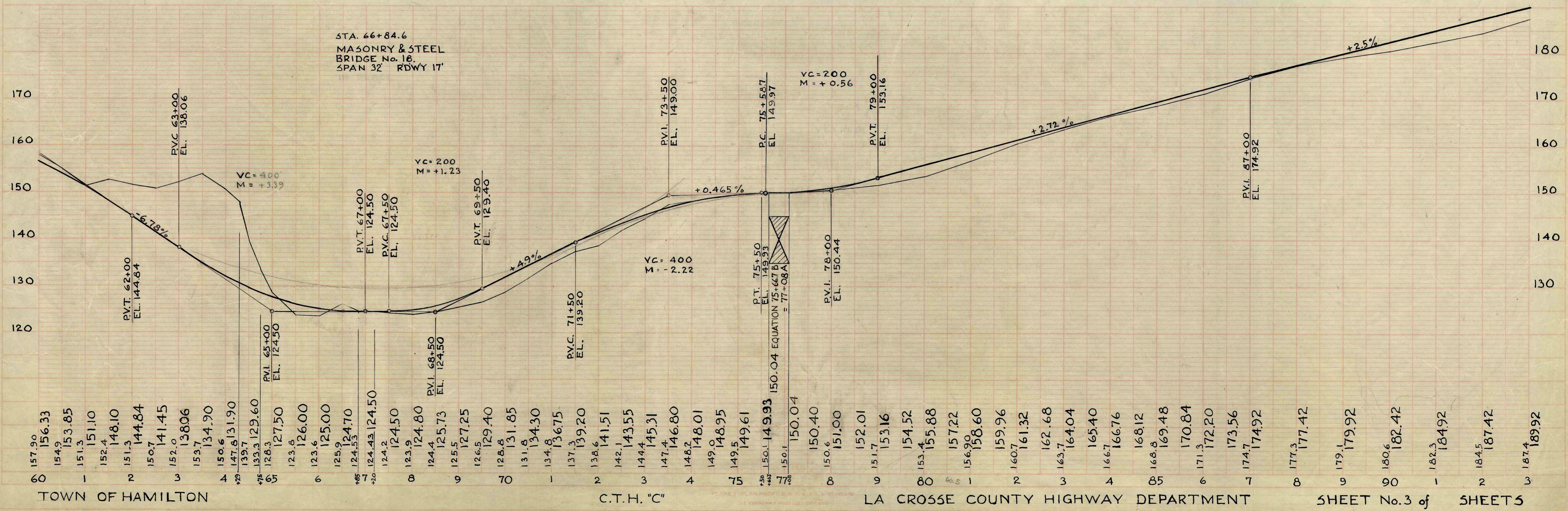
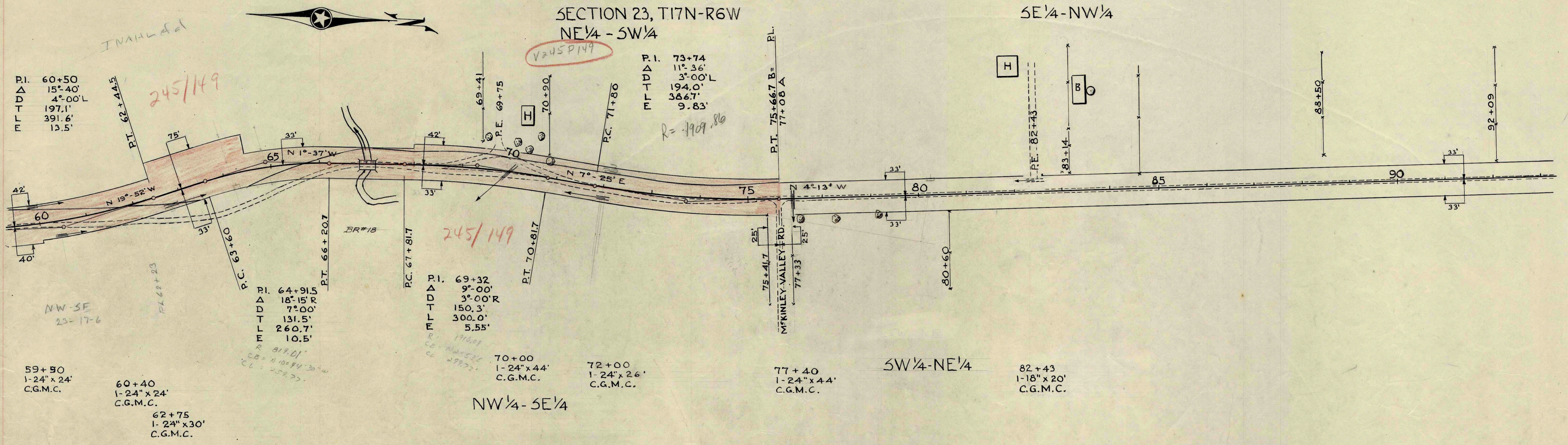
BENCH MARKS

32+00	Spk. in Telephone Pole East of Twn. Rd. 100' Rt.	168.24
41+30	" " " "	34' Rt. 201.36
47+30	" " Power Pole #9404EE15	30' Lt. 181.20
49+70	" " " " #9404EE16	30' Lt. 177.65



PLAN
 F.N.D.
 D.C.
 8-26-53
 12-3-53
 113

PROFILE
 F.N.D.
 D.C.
 8-26-53
 12-3-53
 114



6253
12-1153

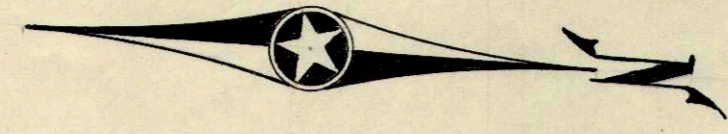
F.N.D.
D.C.

113
118

52853
12-1153

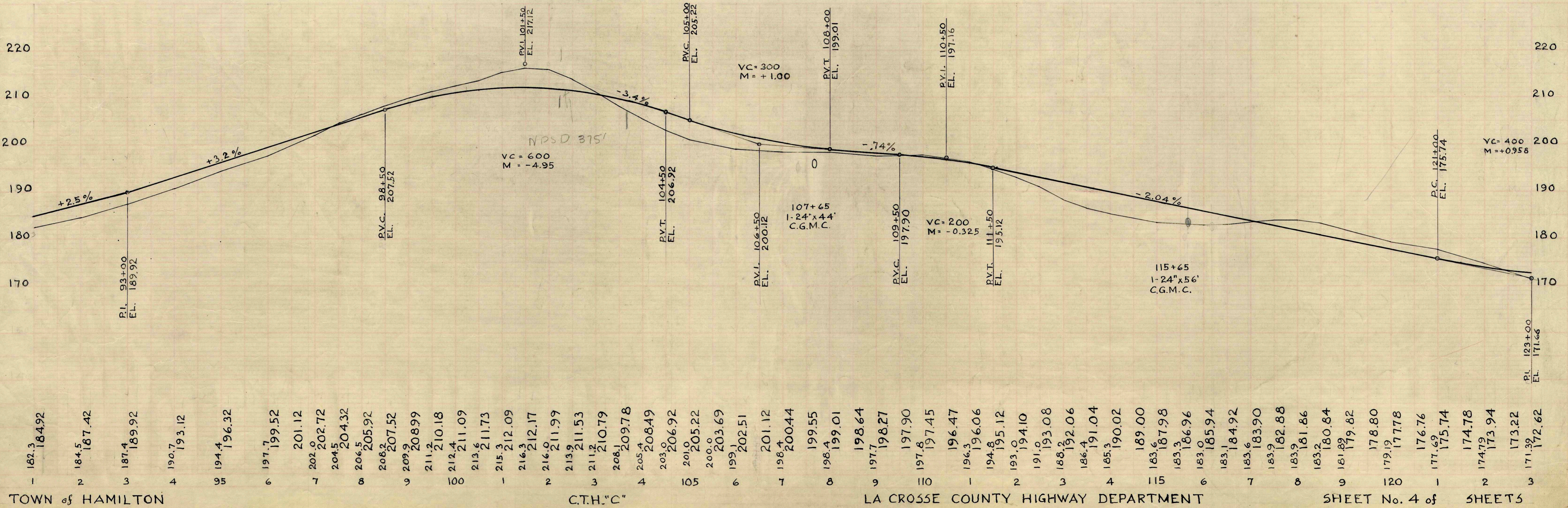
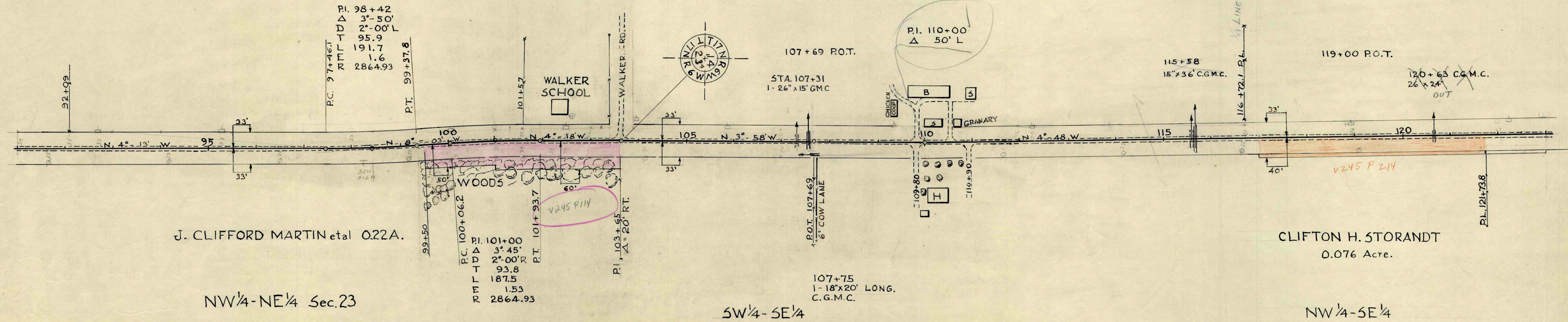
F.N.D.
D.C.

114-117
115



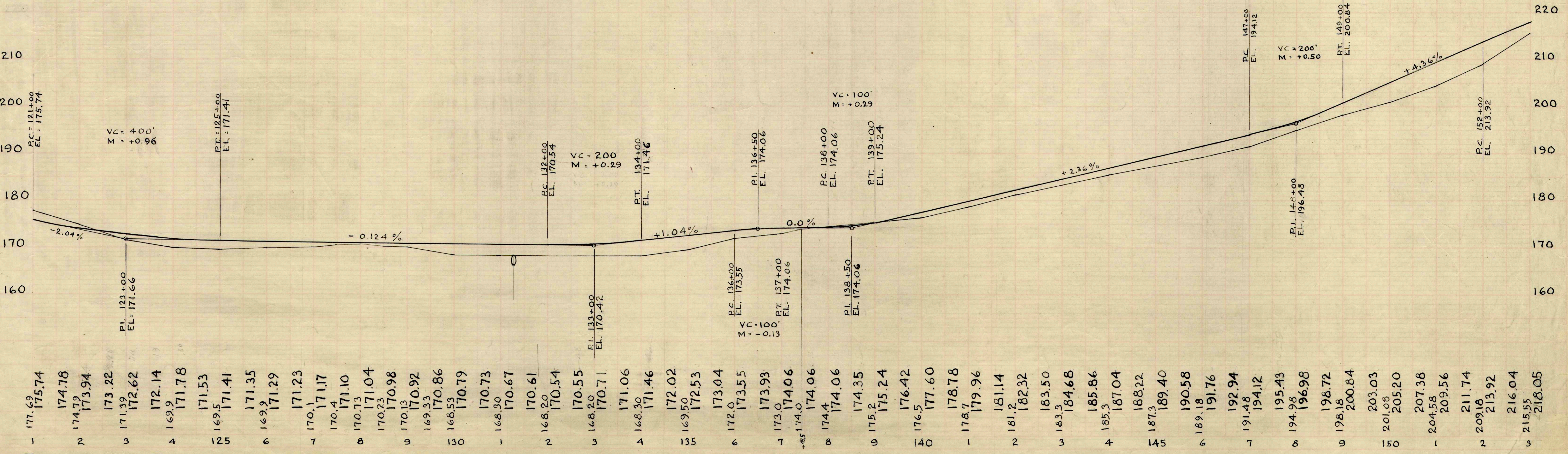
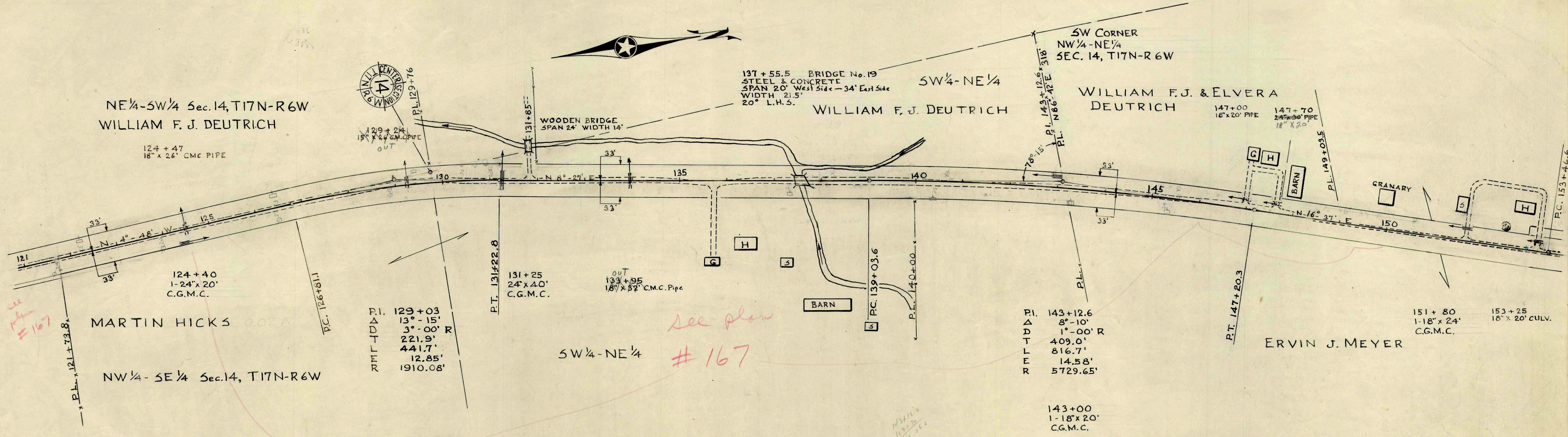
SE 1/4 - SW 1/4 Sec. 14

NE 1/4 - SW 1/4



62.53
12.1633
F.N.D.
D.C.
118

62.53
12.1633
F.N.D.
D.C.
115



TOWN of HAMILTON

C.T.H. "C"

LA CROSSE COUNTY HIGHWAY DEPARTMENT

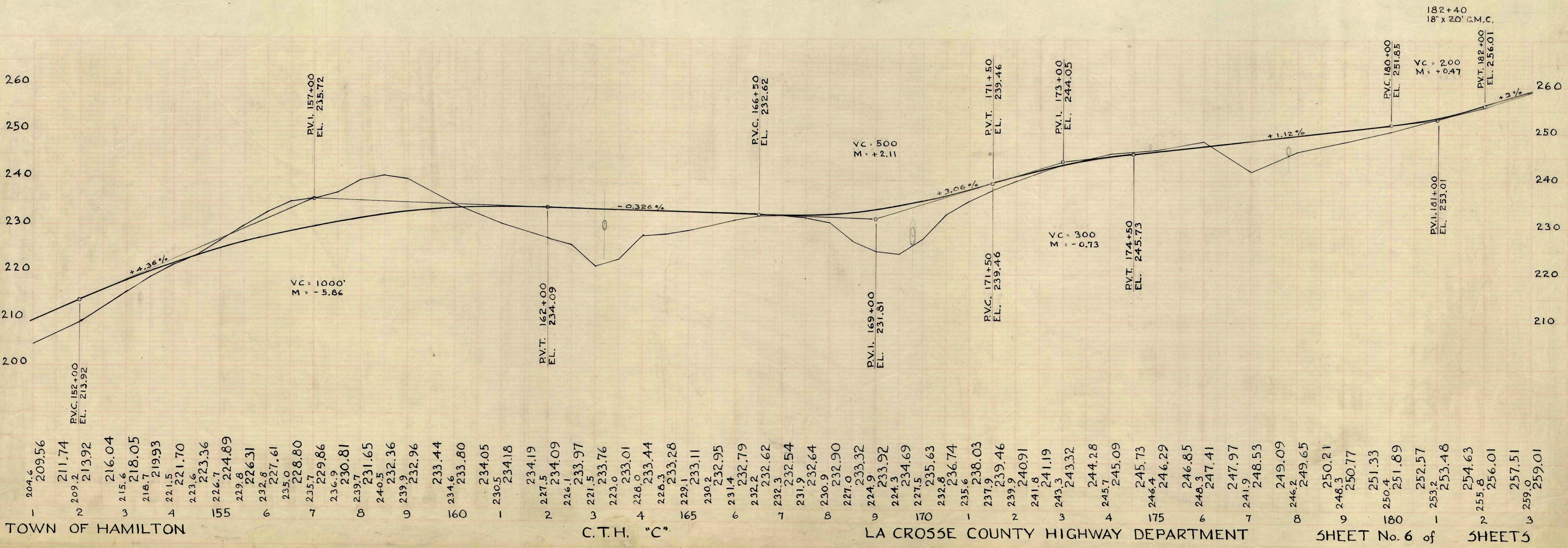
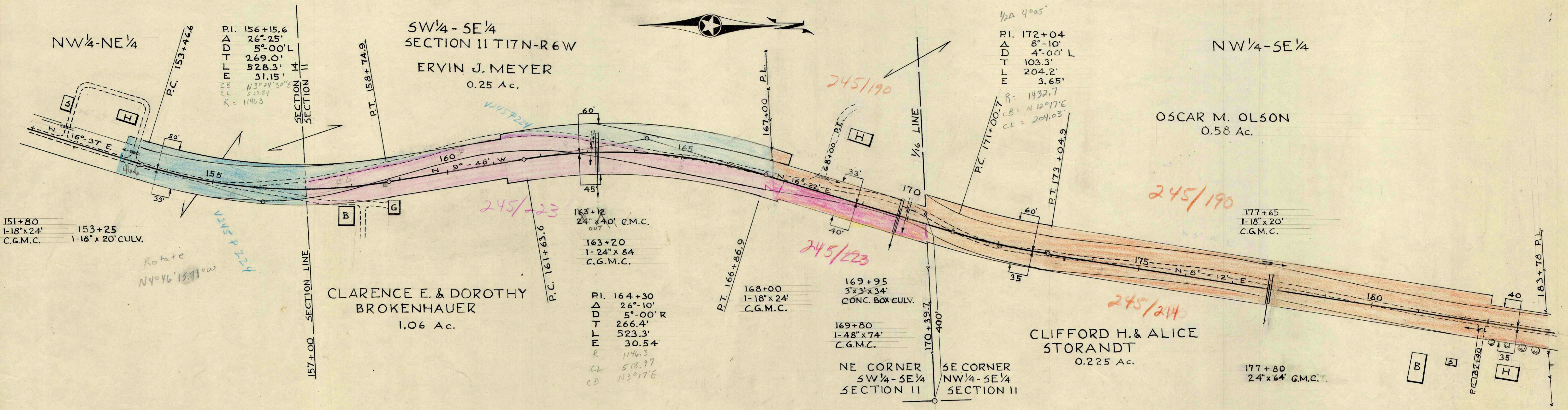
SHEET No. 5 of SHEETS

6-2-53
12-2-53
F.N.D.
D.C.

118

6-5-53
12-2-53
F.N.D.
D.C.

117



TOWN OF HAMILTON

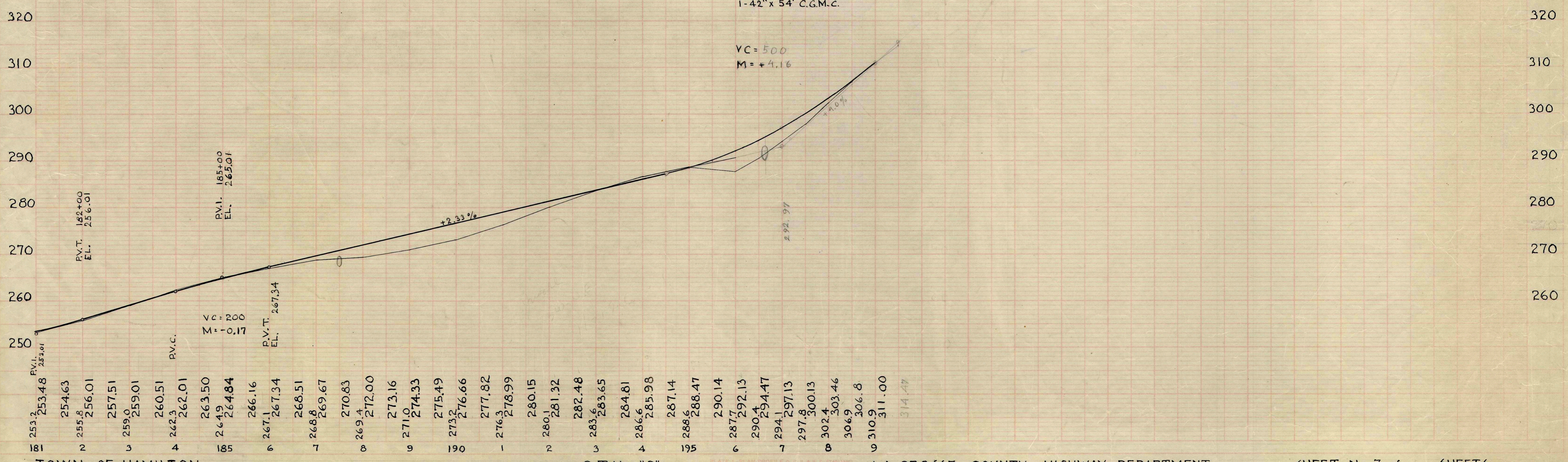
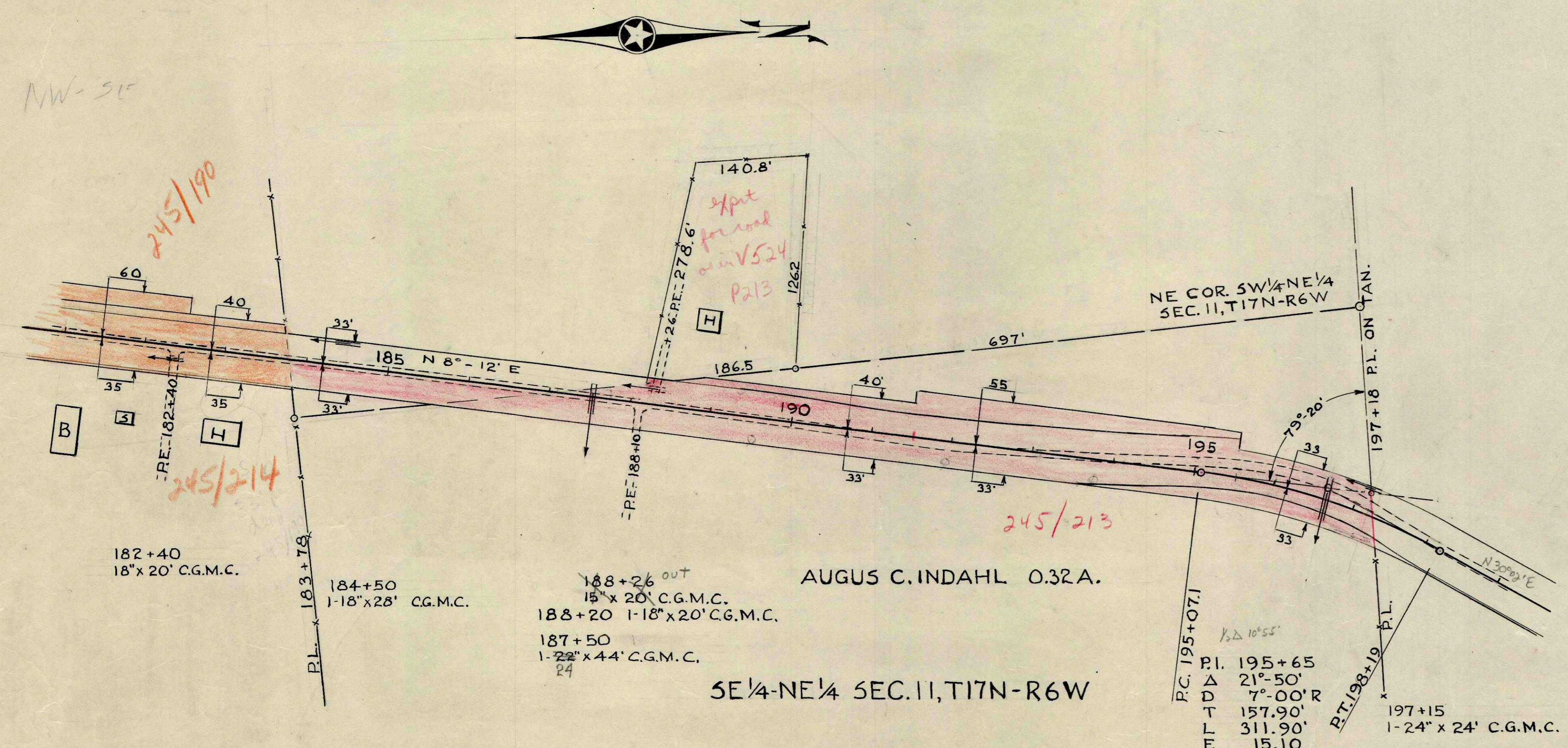
C.T.H. "C"

LA CROSSE COUNTY HIGHWAY DEPARTMENT

SHEET No. 6 of SHEETS

F.N.D. 6-253
D.C. 1-454
118

F.N.D. 7-453
D.C. 1-654
117



TOWN OF HAMILTON

C.T.H. "C"

LA CROSSE COUNTY HIGHWAY DEPARTMENT

SHEET No. 7 of SHEETS

SURVIVED
 PLAN
 NOTE BOOK
 No. 113

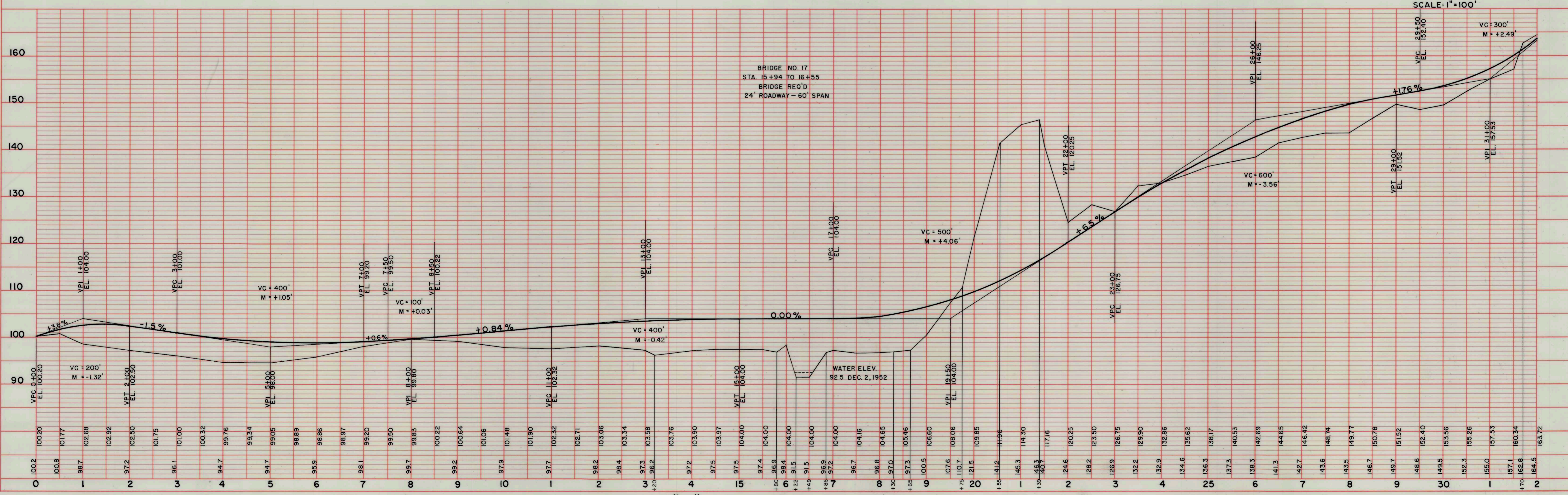
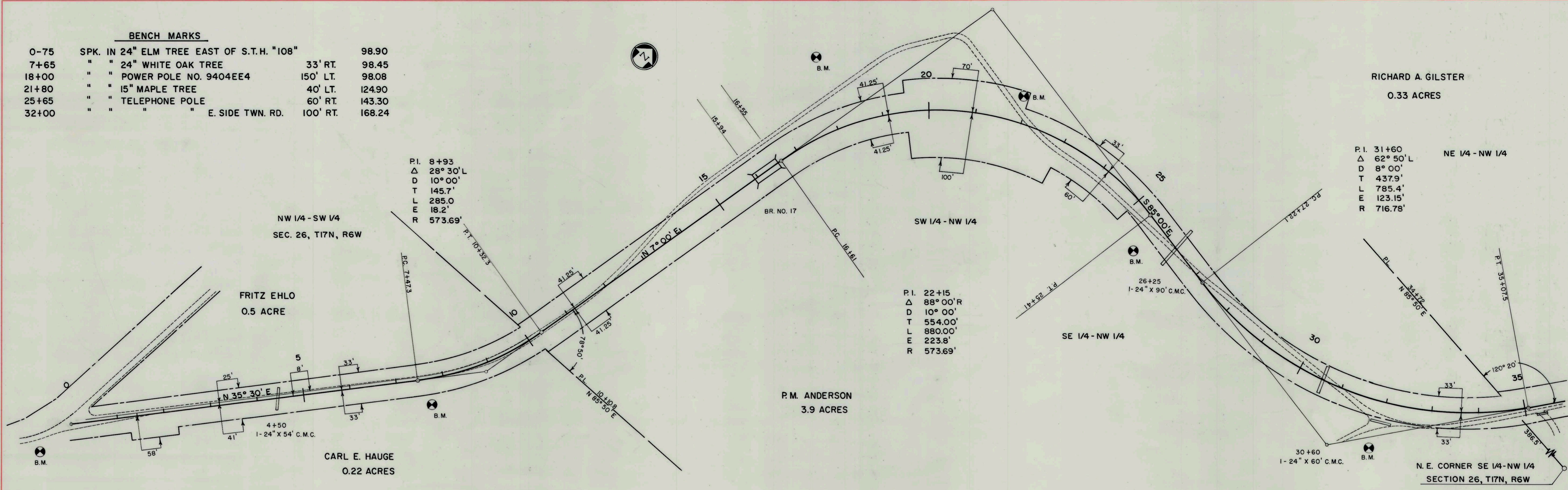
SURVIVED
 PROFILE
 NOTE BOOK
 No. 114

BENCH MARKS

0-75	SPK. IN 24" ELM TREE EAST OF S.T.H. "108"	98.90
7+65	" " 24" WHITE OAK TREE	98.45
18+00	" " POWER POLE NO. 9404EE4	150' LT. 98.08
21+80	" " 15" MAPLE TREE	40' LT. 124.90
25+65	" " TELEPHONE POLE	60' RT. 143.30
32+00	" " " " E. SIDE TWN. RD.	100' RT. 168.24

RICHARD A. GILSTER
 0.33 ACRES

P.I. 31+60
 Δ 62° 50' L
 D 8° 00'
 T 437.9'
 L 785.4'
 E 123.15'
 R 716.78'



TOWN OF HAMILTON

C.T.H. "C"

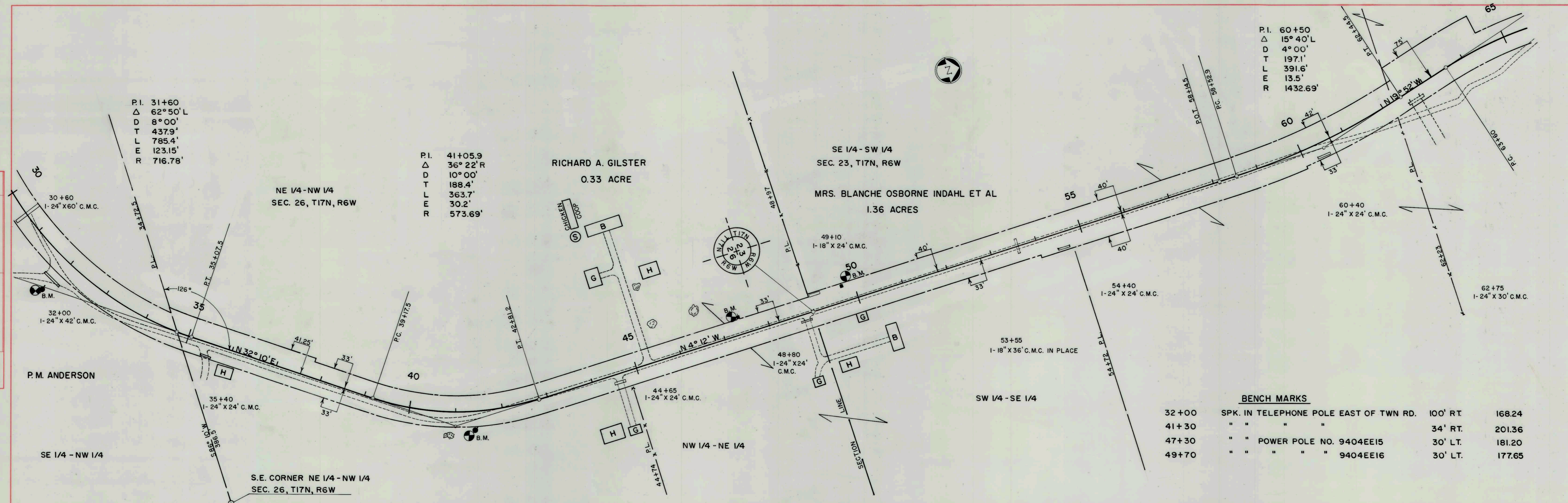
PLAN NO. 146

SHEET NO. 1 OF 7 SHEETS

PLATE 1-PLAN PROFILE O.P.R. & R.E. STANDARD THE FREDERICK POST CO., CHICAGO

PLAN
 SURVIVED
 PLOTTED
 RE-DRAWN
 No. 113

PROFILE
 SURVIVED
 PLOTTED
 RE-DRAWN
 No. 114

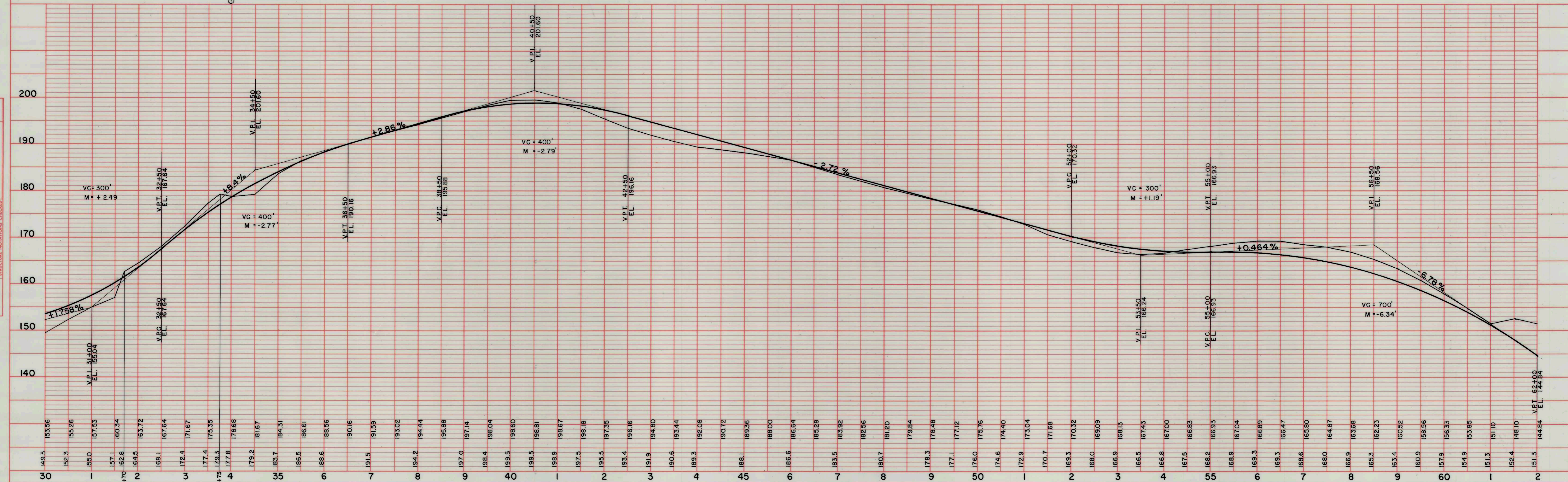


P.I. 60+50
 Δ 15° 40' L
 D 4° 00' L
 T 197.1'
 L 391.6'
 E 13.5'
 R 1432.69'

P.I. 41+05.9
 Δ 36° 22' R
 D 10° 00' L
 T 188.4'
 L 363.7'
 E 30.2'
 R 573.69'

BENCH MARKS

32+00	SPK. IN TELEPHONE POLE EAST OF TWN RD.	100' RT.	168.24
41+30	" " " "	34' RT.	201.36
47+30	" " POWER POLE NO. 9404EE15	30' LT.	181.20
49+70	" " " " " 9404EE16	30' LT.	177.65



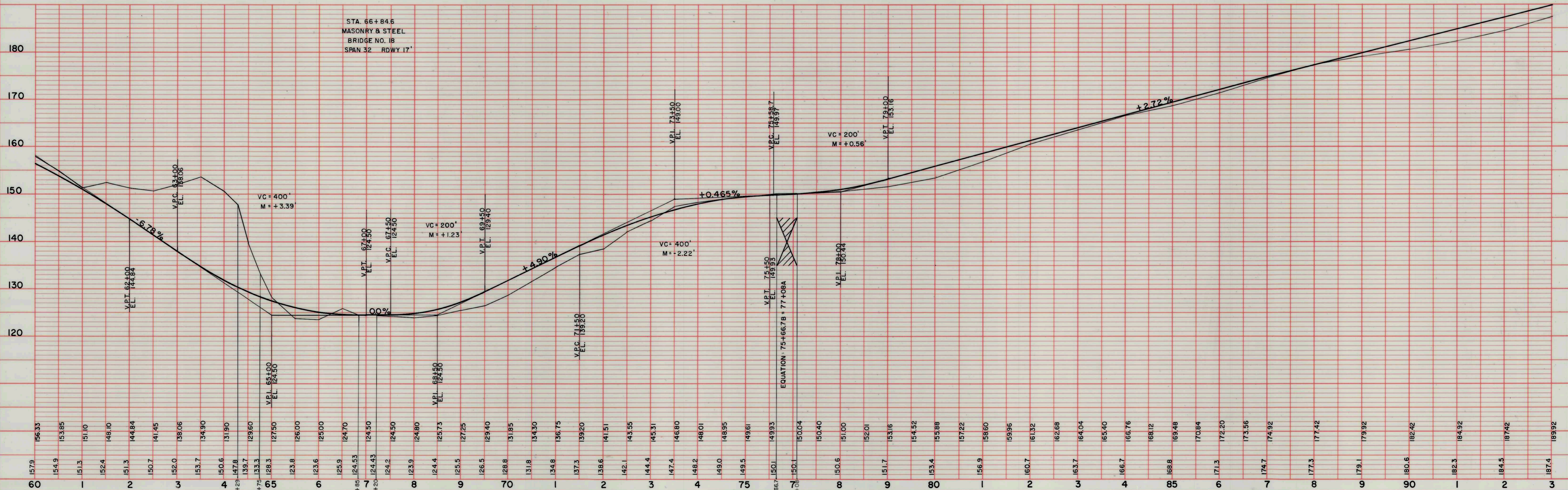
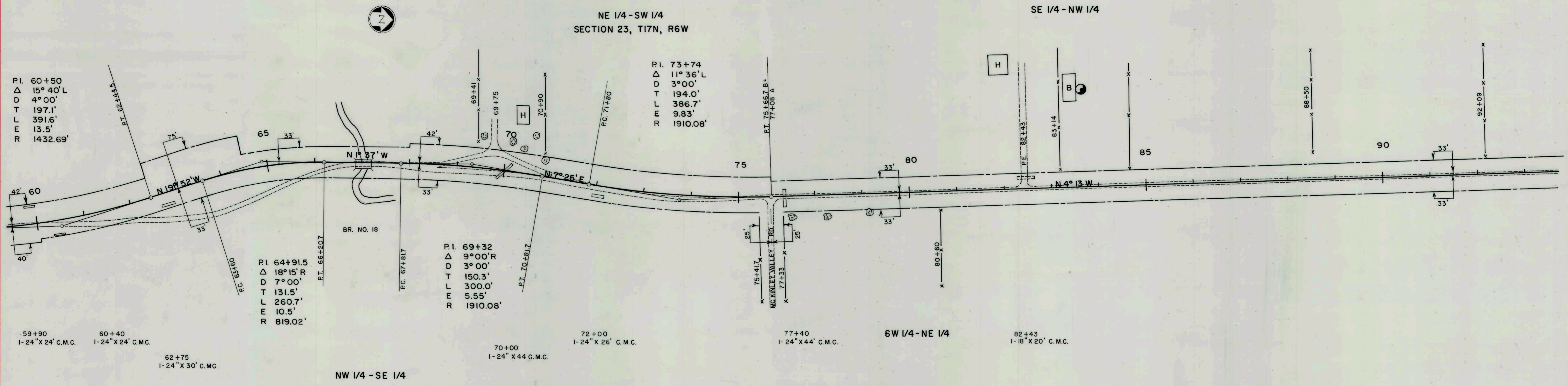
TOWN OF HAMILTON

PLATE 1-PLAN PROFILE O.P.R. & R.E. STANDARD C.T.H. "C"

SHEET NO. 2 OF 7 SHEETS

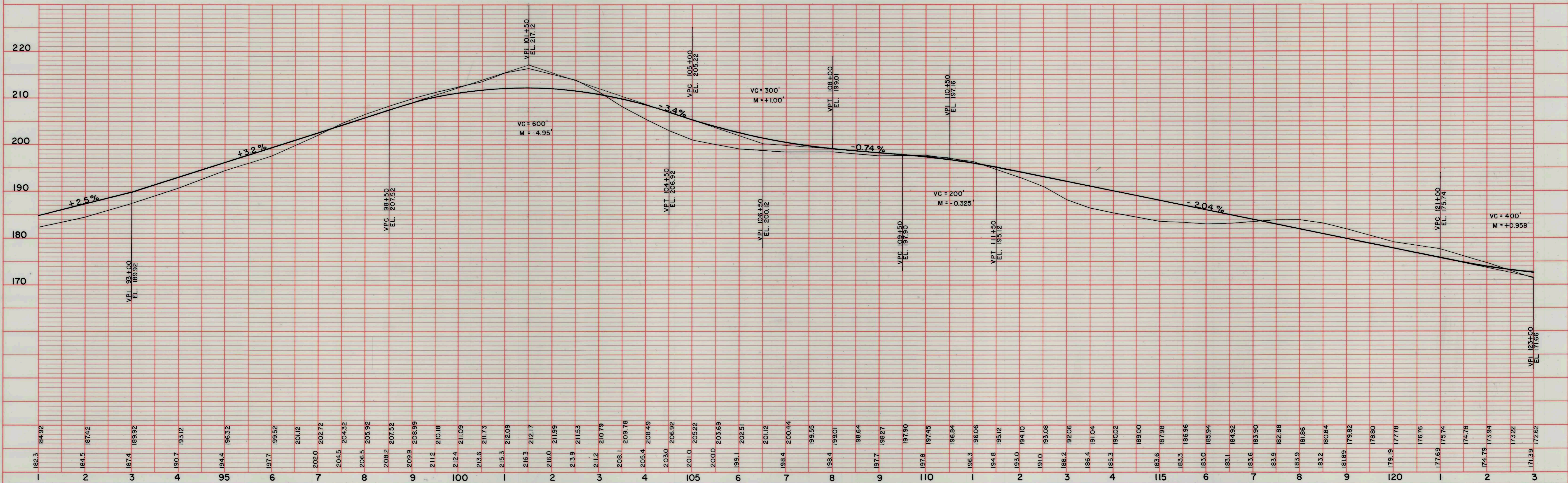
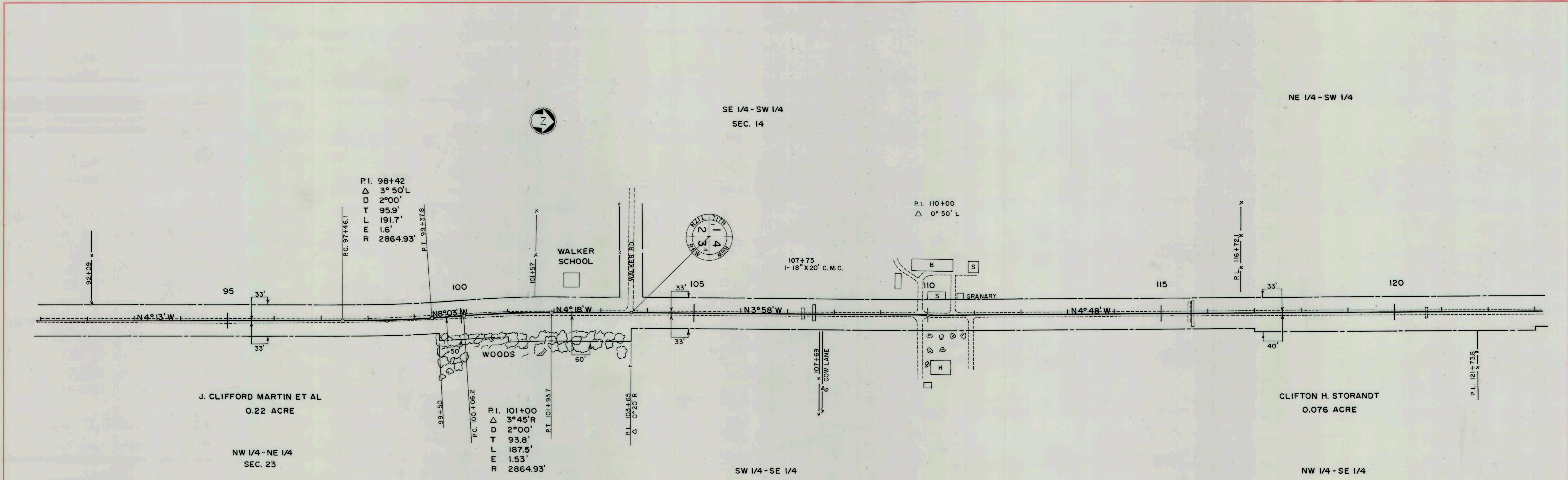
PLAN
 SURVEYED BY: F.N.D.
 PLOTTED BY: D.C.
 NOTE BOOK: RE-DRAWN BY: L.E.H.
 No. 113
 DATE: 8-26-53
 12-8-53
 1-3-78
 RE-DRAWN BY: L.E.H.
 RE-DRAWN BY: L.E.H.
 RE-DRAWN BY: L.E.H.

PROFILE
 SURVEYED BY: F.N.D.
 PLOTTED BY: D.C.
 NOTE BOOK: RE-DRAWN BY: L.E.H.
 No. 113
 DATE: 8-26-53
 12-8-53
 1-3-78
 RE-DRAWN BY: L.E.H.
 RE-DRAWN BY: L.E.H.
 RE-DRAWN BY: L.E.H.



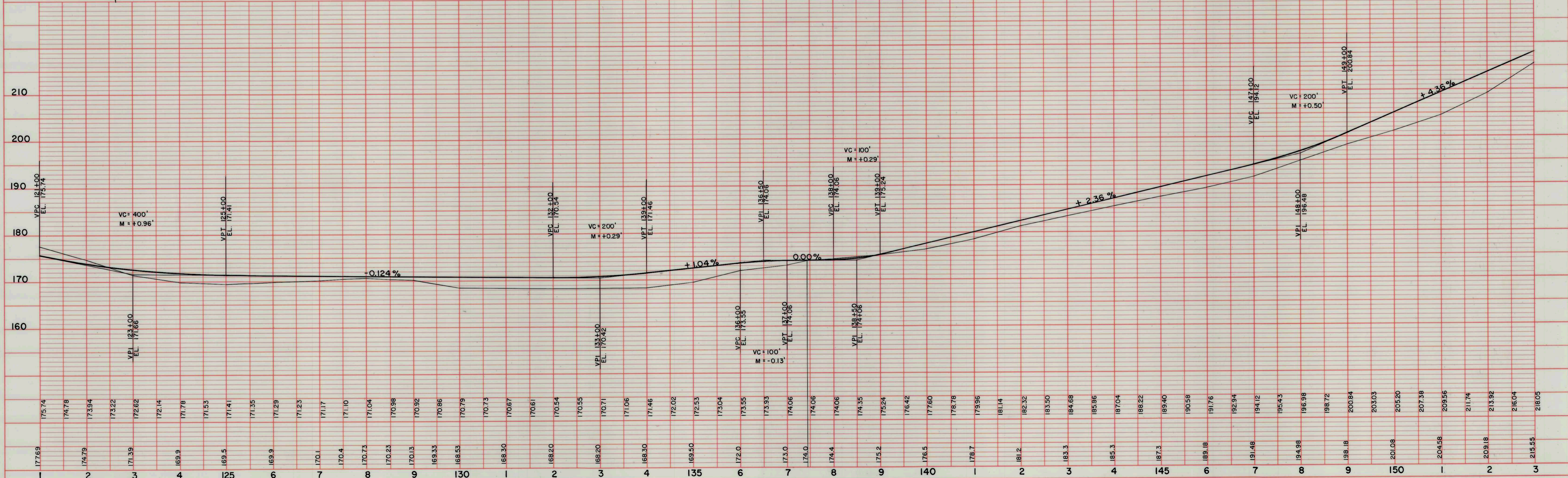
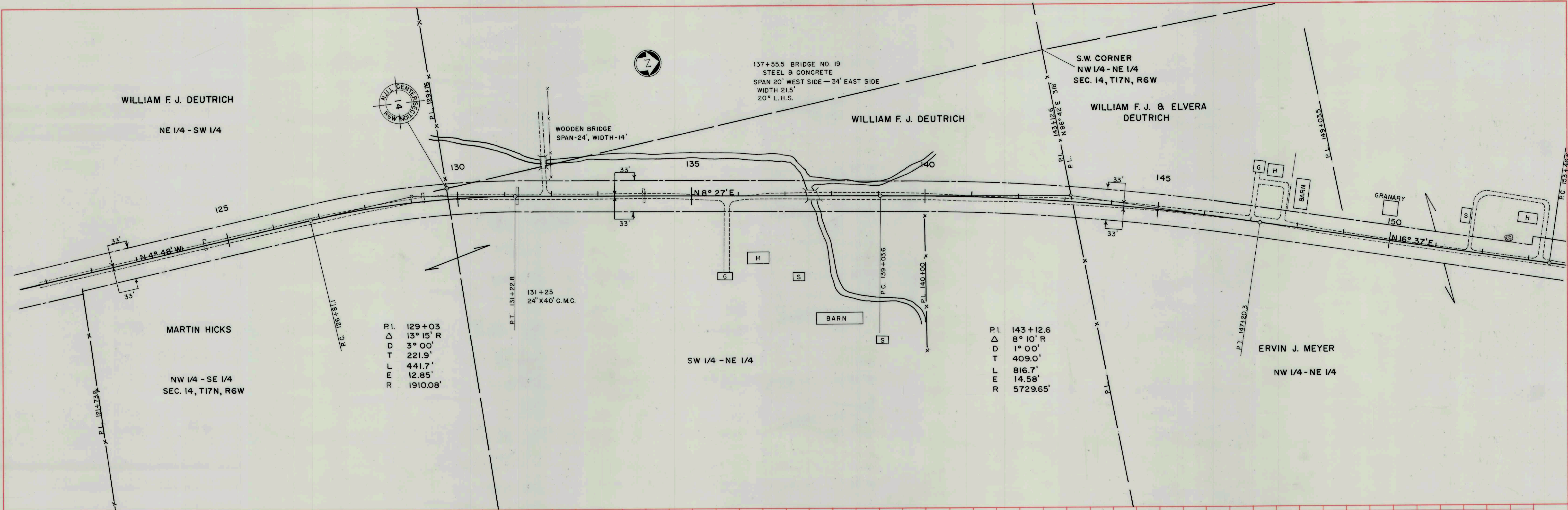
PLAN
 SURVEYED: F.N.D. 6-2-53
 PLOTTED: D.C. 12-11-53
 NOTE BOOK: RE-DRAWN L.E.H. 1-3-78
 No. 118 118 RE-DRAWN L.E.H. 1-3-78

PROFILE
 SURVEYED: F.N.D. 5-23-53
 PLOTTED: D.C. 12-15-53
 NOTE BOOK: RE-DRAWN L.E.H. 1-3-78
 No. 115 RE-DRAWN L.E.H. 1-3-78



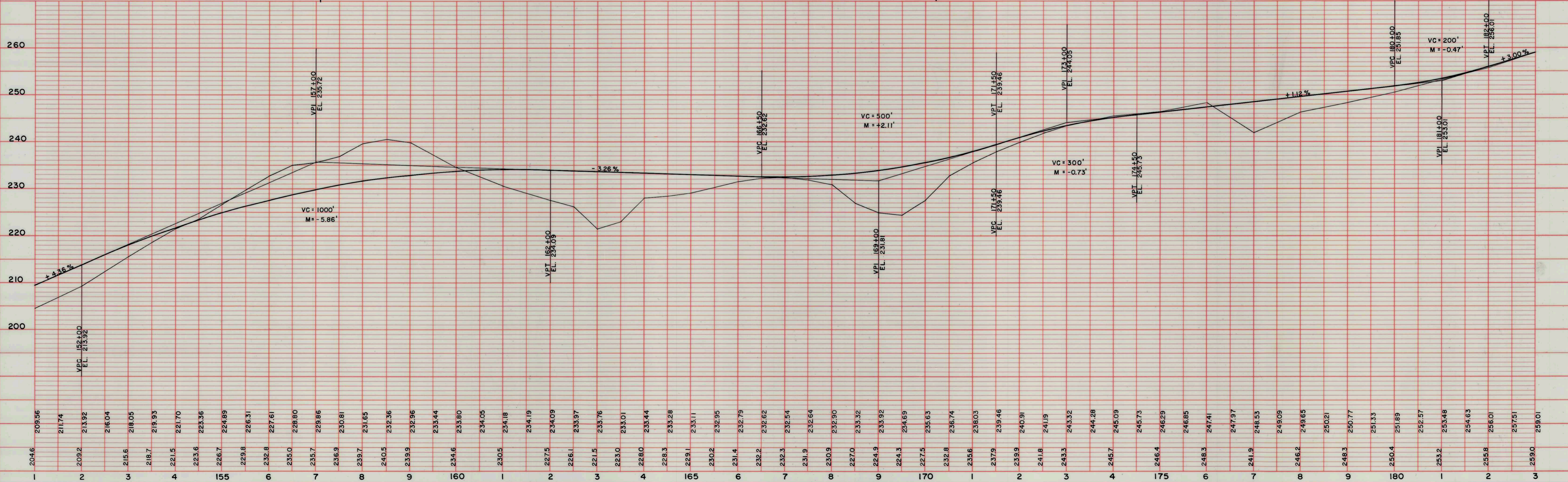
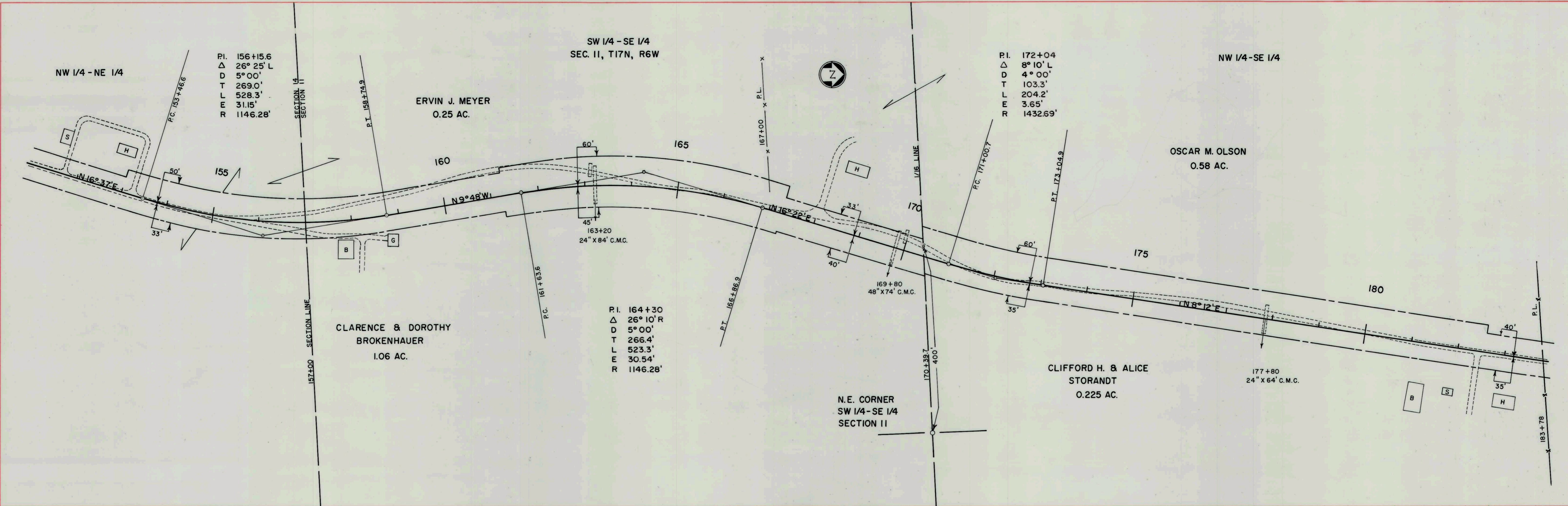
DATE 6-5-53
 F.M.D. 12-18-53
 D.C. L.E.H.
 SURVEYED BY
 NOTE BOOK RE-DRAWN
 No. 118
 RE-DRAWN BY L.E.H.
 RE-DRAWN BY L.E.H.
 RE-DRAWN BY L.E.H.
 RE-DRAWN BY L.E.H.

DATE 6-5-53
 F.M.D. 12-18-53
 D.C. L.E.H.
 SURVEYED BY
 NOTE BOOK RE-DRAWN
 No. 118 & 117
 RE-DRAWN BY L.E.H.
 RE-DRAWN BY L.E.H.
 RE-DRAWN BY L.E.H.



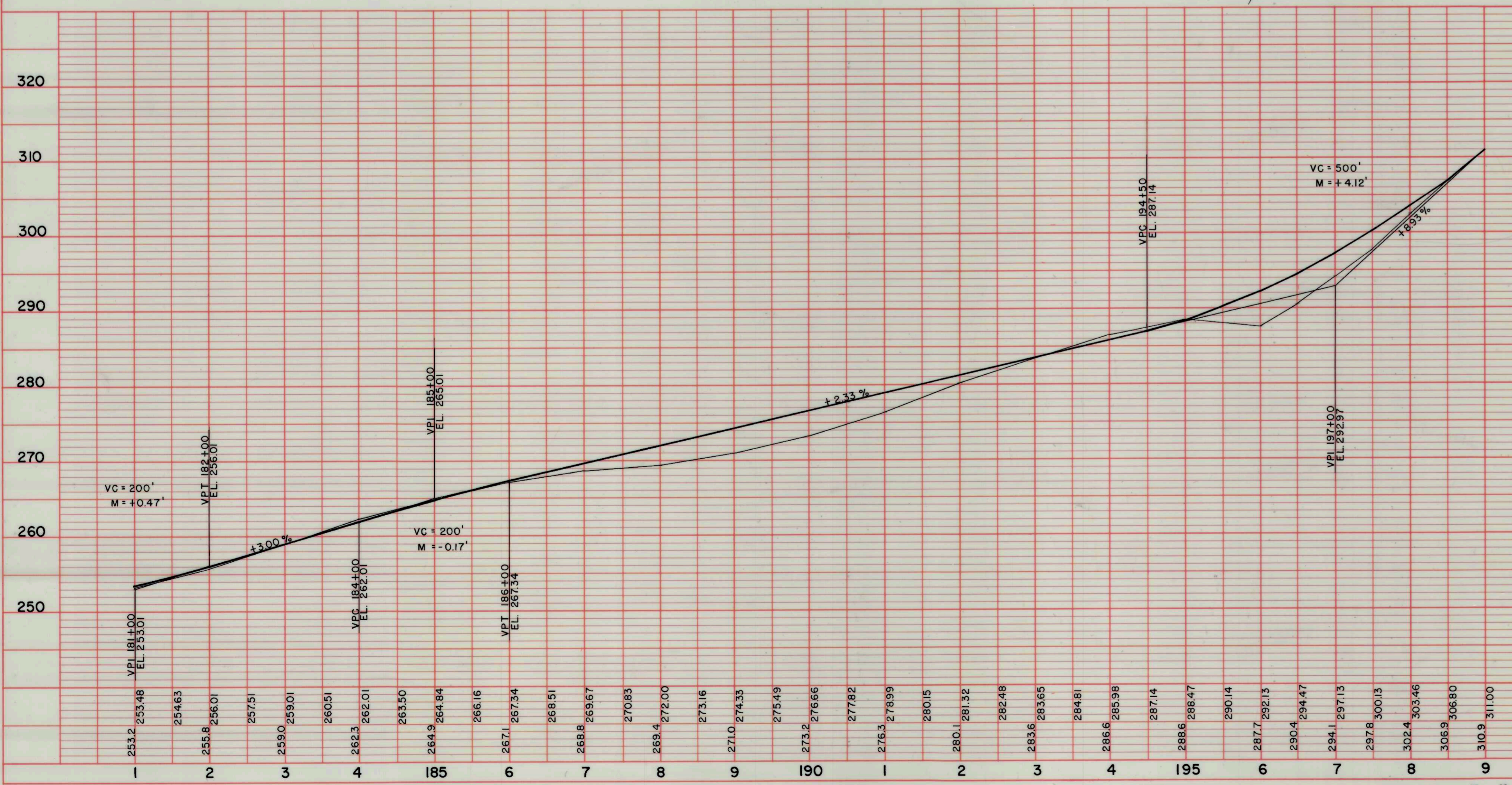
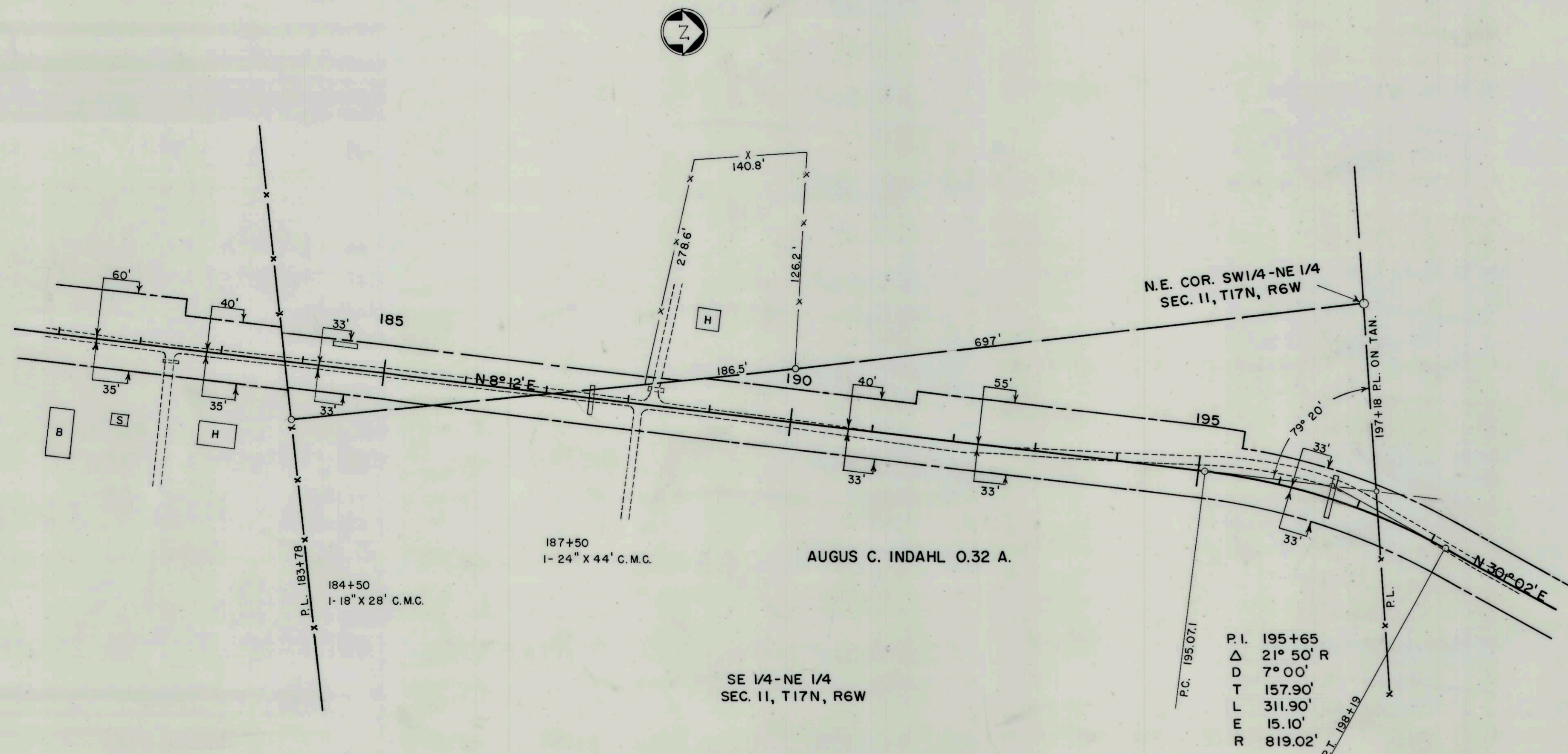
PLAN
 SURVEYED BY F.N.D. DATE 6-2-53
 PLOTTED BY D.C. DATE 12-22-53
 NOTE BOOK NO. 118 RE-DRAWN BY L.E.H. DATE 12-8-77
 RE-DRAWN BY L.E.H. DATE 12-8-77
 STRUCTURE NOTATIONS CHECKED BY L.E.H. DATE 12-8-77

PROFILE
 SURVEYED BY F.N.D. DATE 6-5-53
 PLOTTED BY D.C. DATE 12-22-53
 NOTE BOOK NO. 118 RE-DRAWN BY L.E.H. DATE 12-8-77
 RE-DRAWN BY L.E.H. DATE 12-8-77
 STRUCTURE NOTATIONS CHECKED BY L.E.H. DATE 12-8-77



DATE: 6-2-53
 BY: F.N.D.
 CHECKED: D.C.
 PLOTTED: 4-5-54
 RE-DRAWN: L.E.H.
 SURVEYED: RE-DRAWN
 NOTE BOOK: RE-DRAWN
 No. 118
 STRUCTURE NOTATIONS CHECKED

DATE: 7-4-53
 BY: F.N.D.
 CHECKED: D.C.
 PLOTTED: 4-5-54
 RE-DRAWN: L.E.H.
 SURVEYED: RE-DRAWN
 NOTE BOOK: RE-DRAWN
 No. 118
 STRUCTURE NOTATIONS CHECKED



TOWN OF HAMILTON

PLATE 1-PLAN, PROFILE O.P.R. & R.E. STANDARD
 THE FREDERICK POST CO., CHICAGO
 C.T.H. "C"

SHEET NO. 7 OF 7 SHEETS

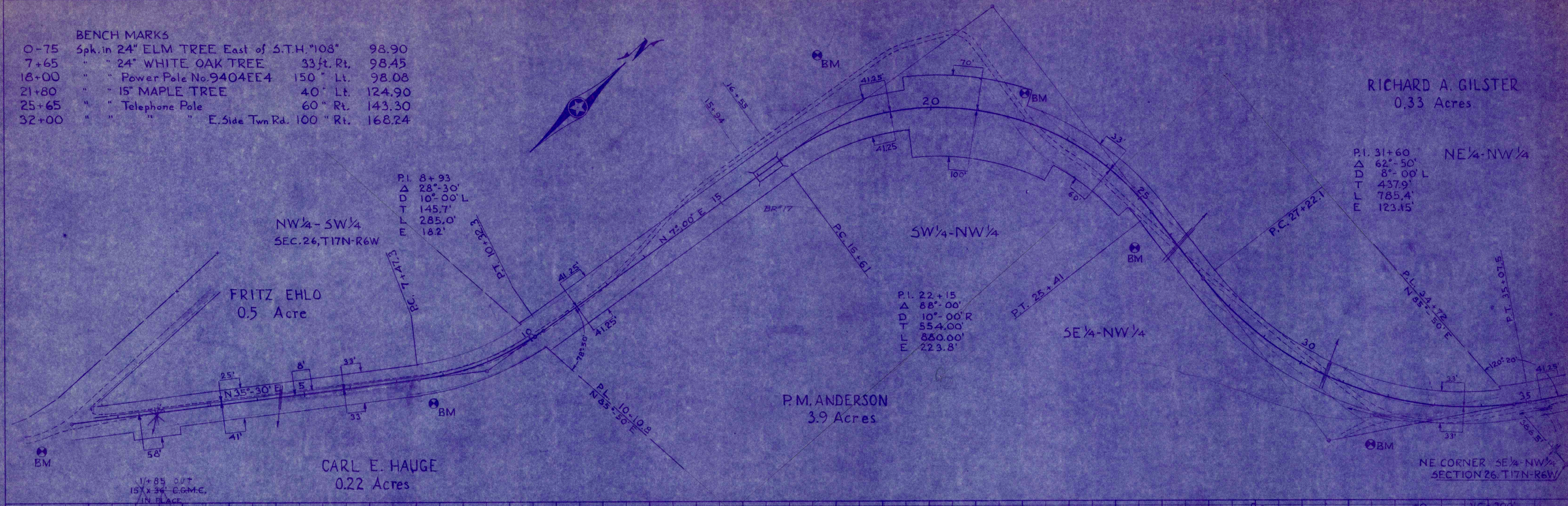
BENCH MARKS

0+75	Spk. in 24" ELM TREE East of S.T.H. "108"	98.90
7+65	" " 24" WHITE OAK TREE	33 ft. Rt. 98.45
18+00	" " Power Pole No. 9404EE4	150" Lt. 98.08
21+80	" " 15" MAPLE TREE	40" Lt. 124.90
25+65	" " Telephone Pole	60" Rt. 143.30
32+00	" " " " E. Side Twn Rd. 100" Rt.	168.24

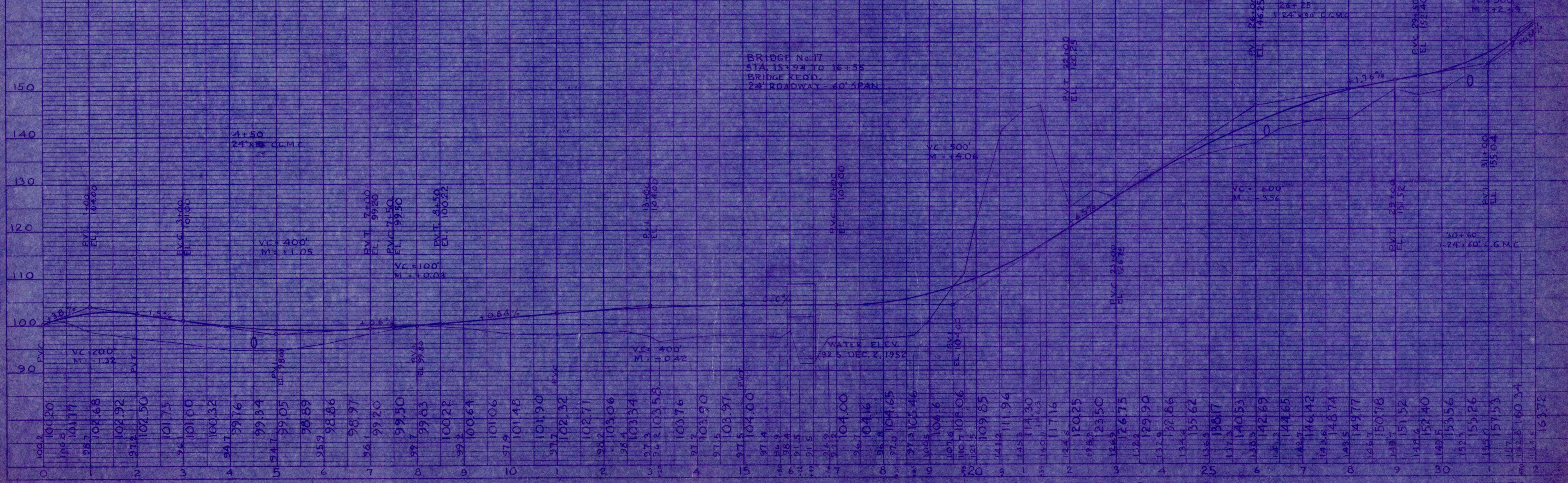
RICHARD A. GILSTER
0.33 Acres

P.I. 31+60 NE 1/4-NW 1/4
 Δ 62°-50'
 D 8°-00' L
 T 437.9'
 L 785.4'
 E 123.15'

PLAN
 NOTE BOOK, ALIGNMENT CHECKED, No. 113
 F.N.D. D.C.
 3.1.51
 3.31.51



PROFILE
 NOTE BOOK, GRADE CHECKED, No. 114
 F.N.D. D.C.
 3.1.51
 3.31.51



TOWN of HAMILTON

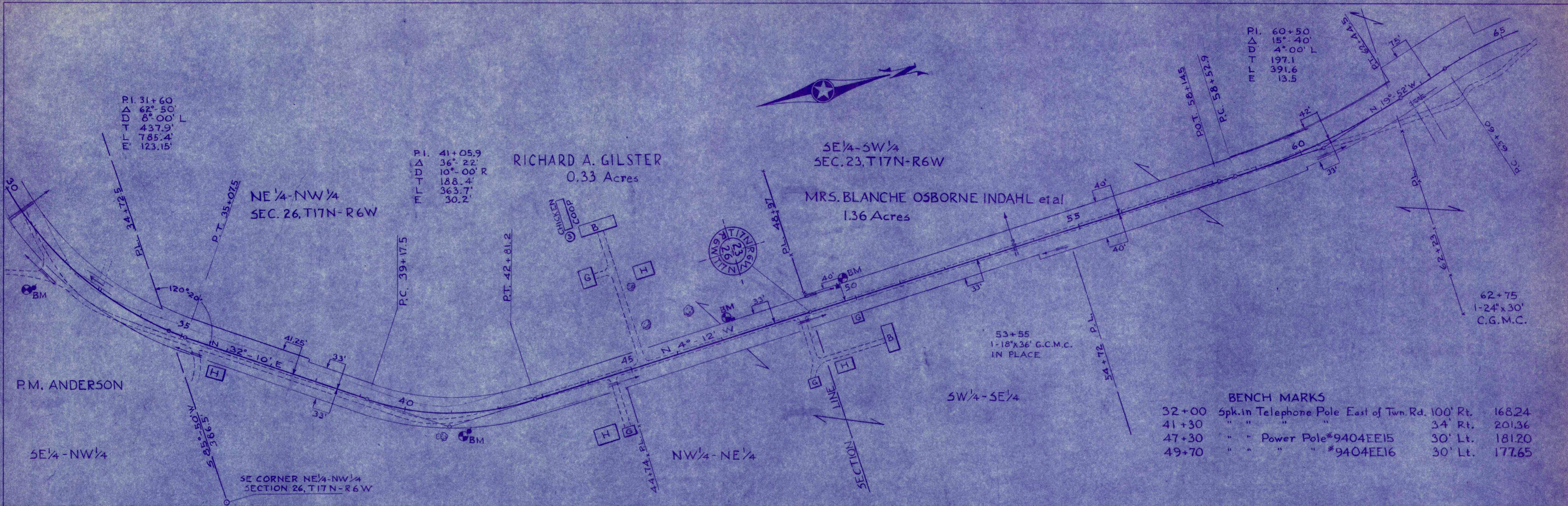
C.T.H. "C"

LA CROSSE COUNTY HIGHWAY DEPARTMENT

SHEET No. 1 of 5 SHEETS

PLAN
 SURVEYED BY F.N.D. BY 8-24-52
 PLOTTED BY D.C. 11-10-52
 NOTE BOOK: ALIGNMENT CHANGES
 No. 113

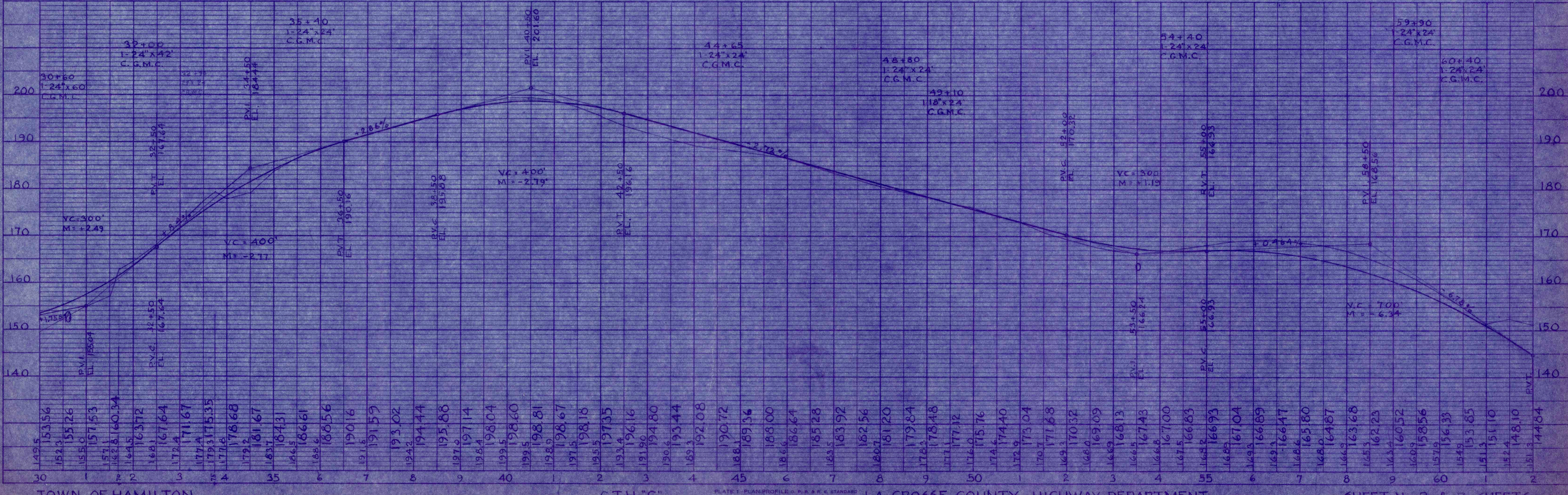
PROFILE
 SURVEYED BY F.N.D. BY 11-3-52
 PLOTTED BY D.C. 11-10-52
 NOTE BOOK: GRADES, CHANGES
 No. 114



P.I. 60+50
 Δ 15° 40'
 D 4° 00' L
 T 197.1
 L 391.6
 E 13.5

BENCH MARKS

32+00	Spk. in Telephone Pole East of Twn. Rd. 100' Rt.	168.24
41+30	" " " "	34' Rt. 201.36
47+30	" " Power Pole #9404EE15	30' Lt. 181.20
49+70	" " " " #9404EE16	30' Lt. 177.65



TOWN OF HAMILTON

C.T.H. "C"

PLATE 1 - PLAN-PROFILE - P. R. & R. C. STANDARD
THE FREDERICK HOLT CO., CHICAGO

LA CROSSE COUNTY HIGHWAY DEPARTMENT

SHEET No. 2 of 7 SHEETS