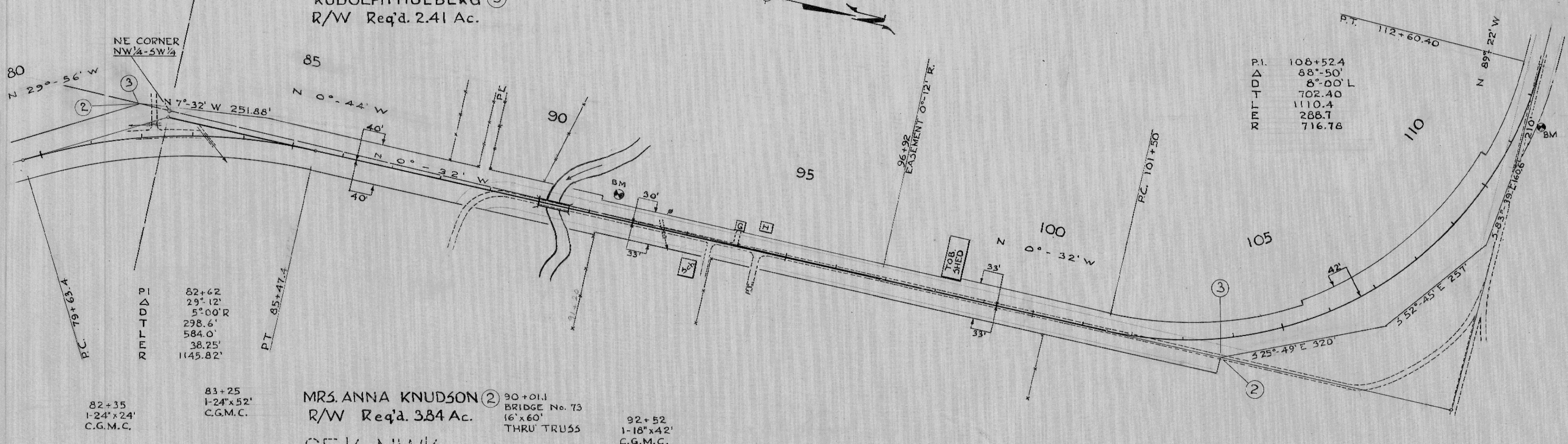


SW 1/4-NW 1/4
 SEC. 28, T. 17N-R. 6W
 RUDOLPH HULBERG ③
 R/W Req'd. 2.41 Ac.

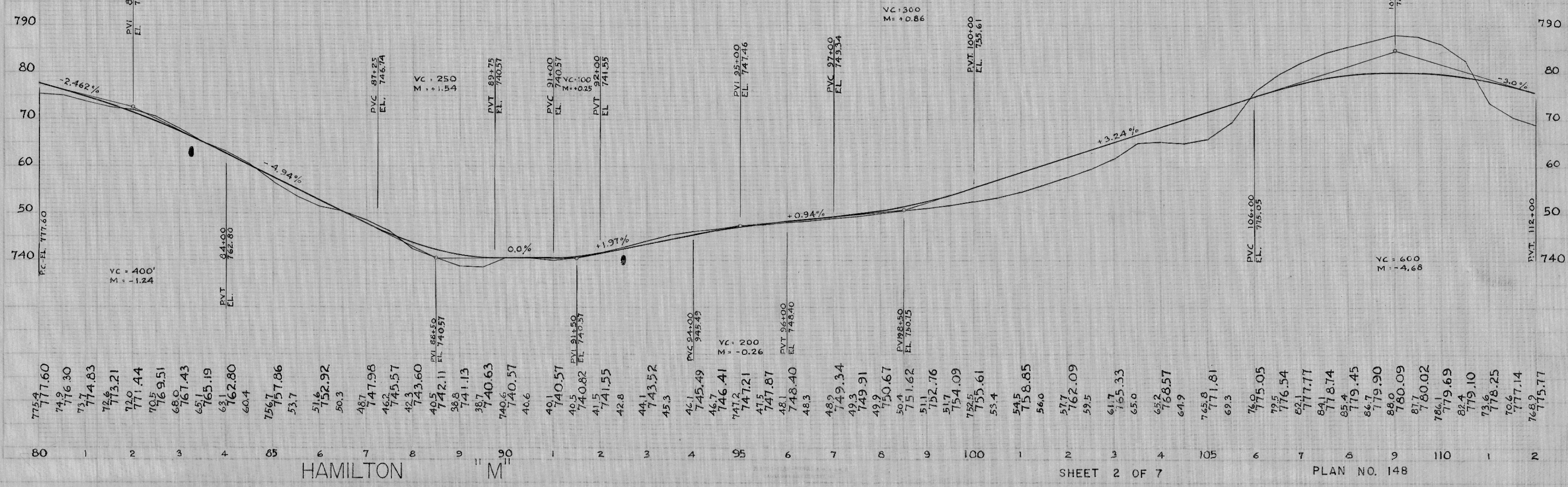
NW 1/4-NW 1/4

B.P.R. DIVISION	PROJECT	SHEET NUMBER	TOTAL SHEETS
SN	C.T.H. "M" 532-9-807 HAMILTON	2	4

PLAN
 119



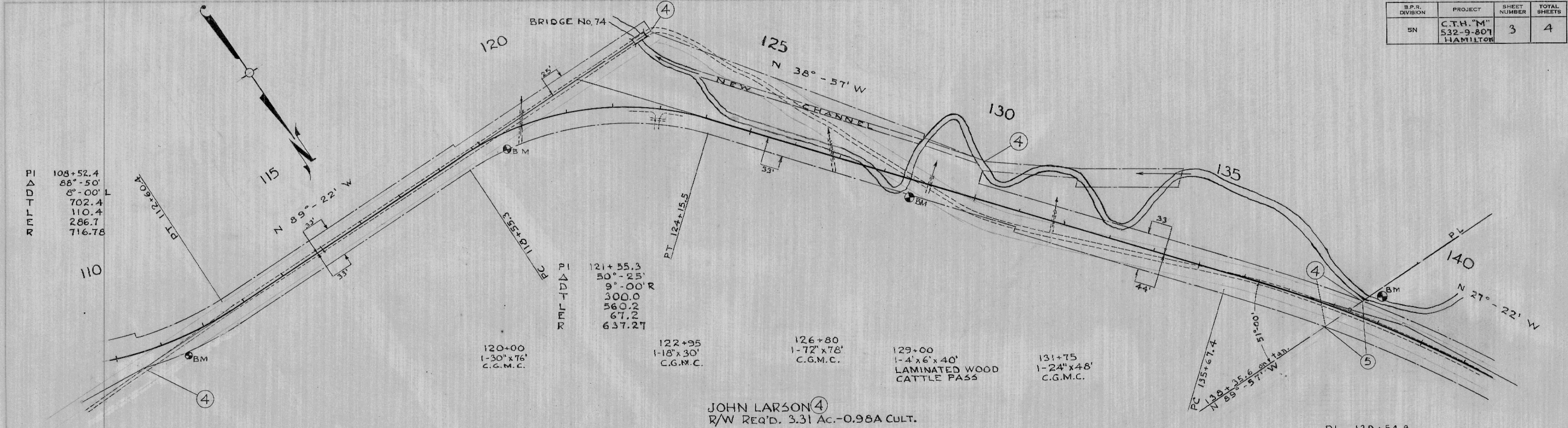
BM #5 Spk. in PP No. 94046616 40' Lt. 91+50 EL. 739.84
 "TP" 33' Rt. 111+50 772.56



S.P.R. DIVISION	PROJECT	SHEET NUMBER	TOTAL SHEETS
5N	C.T.H. "M" 532-9-801 HAMILTON	3	4

PLAN	118
END R.D.N.	

PLAN	117
END R.D.N.	



SW 1/4-SW 1/4
SECTION 21

JOHN LARSON ④
R/W REQ'D. 3.31 AC.-0.96A CULT.

SE 1/4-SE 1/4
SECTION 20. T17N-R6W

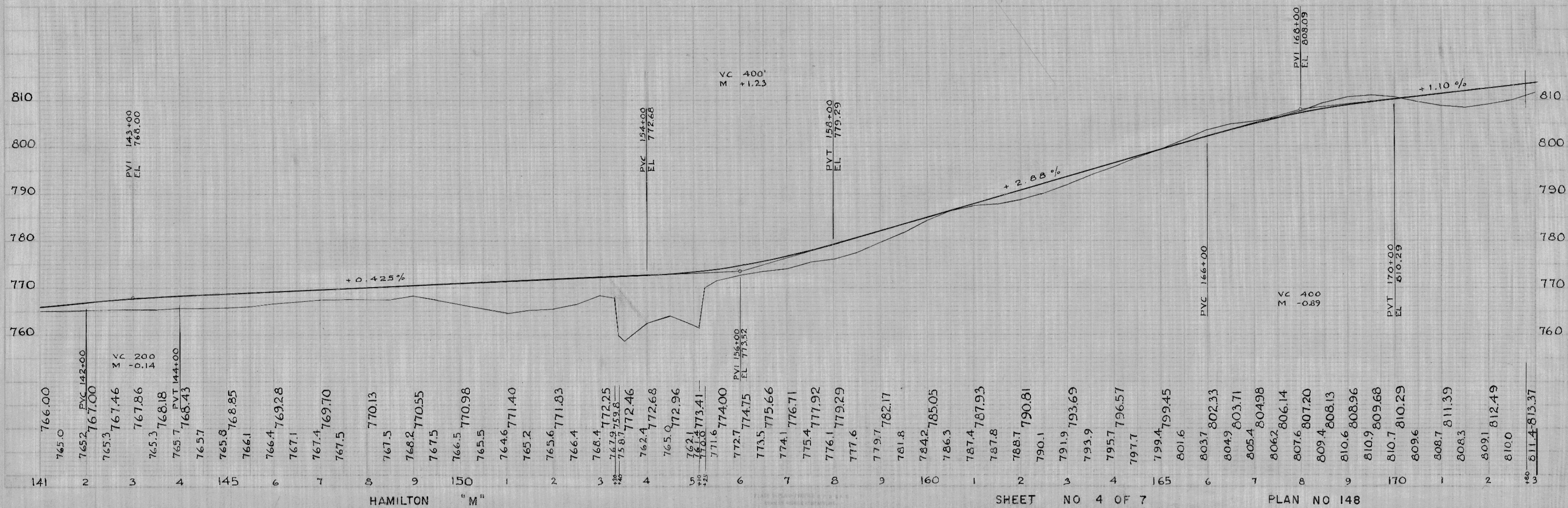
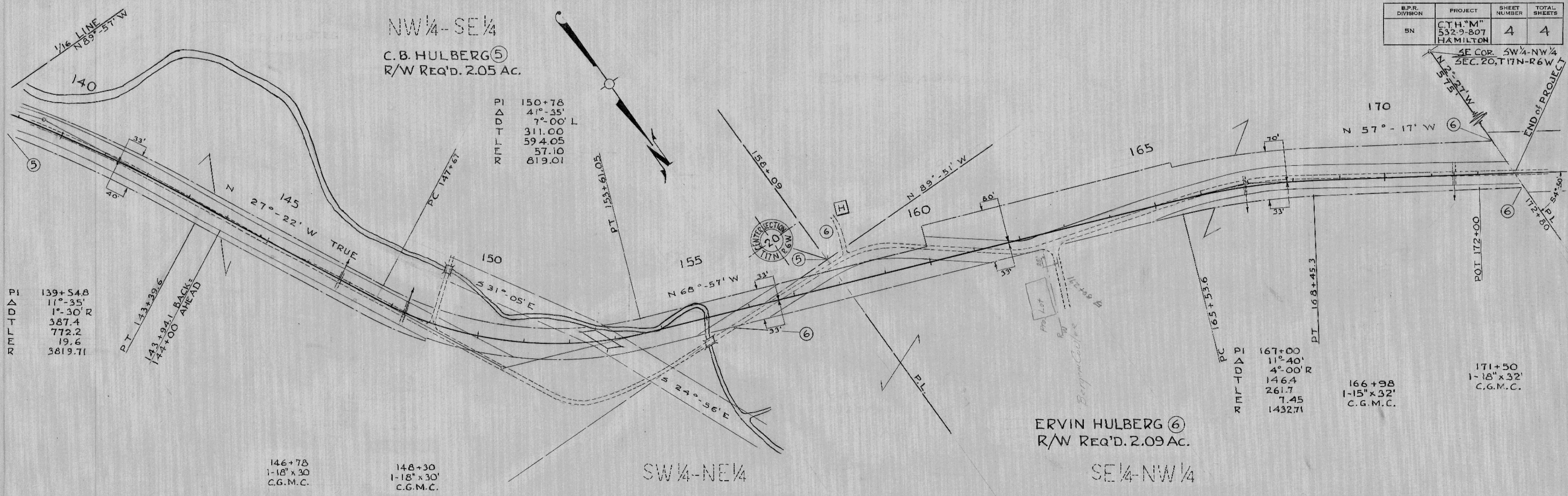
PI	139+54.8
Δ	11°-35'
D	1°-30' R
T	367.4
F	772.2
R	19.6
R	3819.7

BENCH MARKS

STA.	DESCRIPTION	ELEV.
111+50	Spk. in TP	33 ft. Rt. 772.56
119+50	" " TP	22 " " 758.50
128+65	" " 5' ELM TREE	30 " " 757.10
138+90	" " PP 94046639	50 " Lt. 799.79



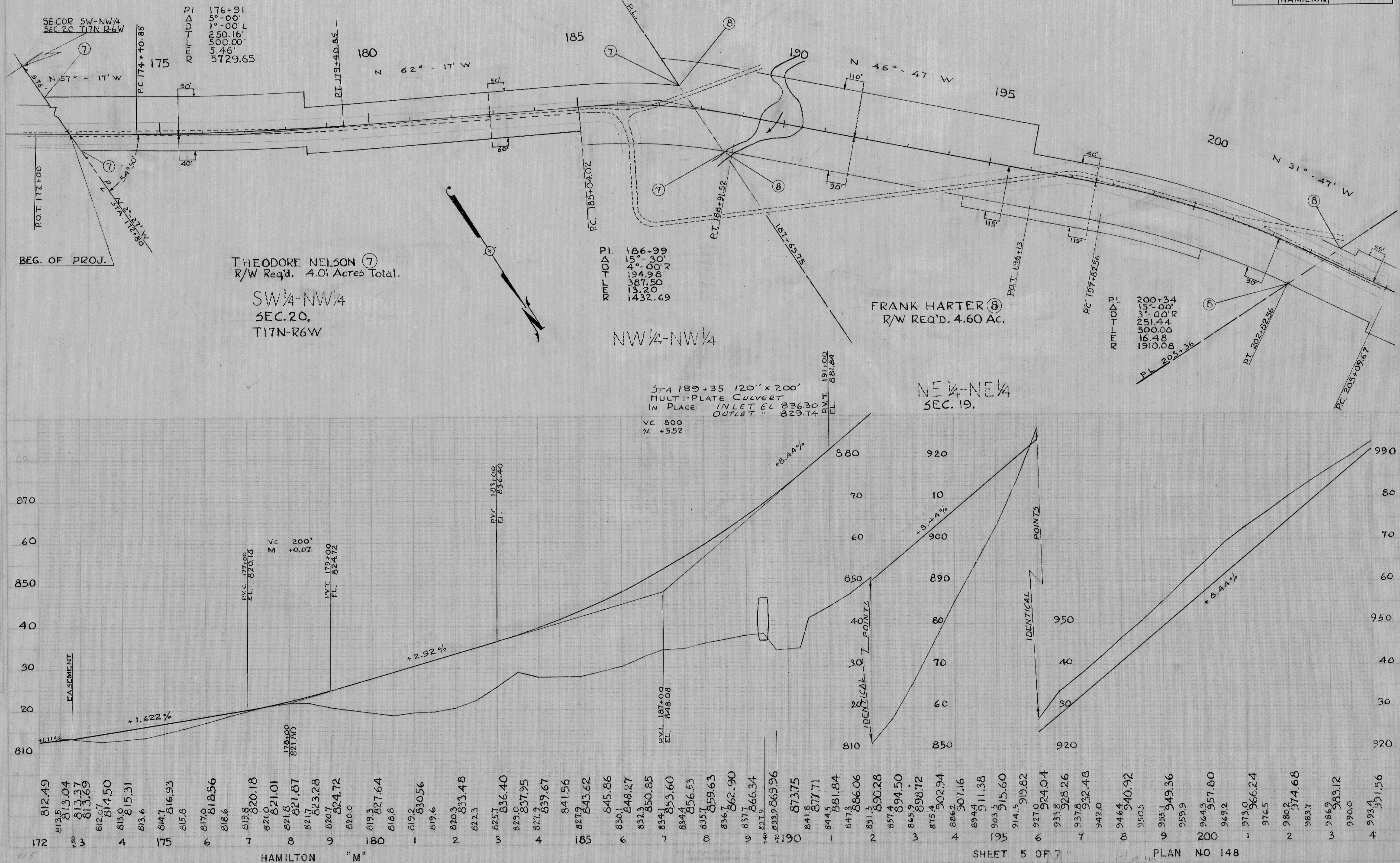
B.P.R. DIVISION	PROJECT	SHEET NUMBER	TOTAL SHEETS
5N	CTH "M" 532.9-807 HAMILTON	4	4



D.P.R. DIVISION	PROJECT	SHEET NUMBER	TOTAL SHEETS
5N	CTH "M" 61-807-21 HAMILTON	1	2

PLAN
C.S. MURPHY
R. NAGLE

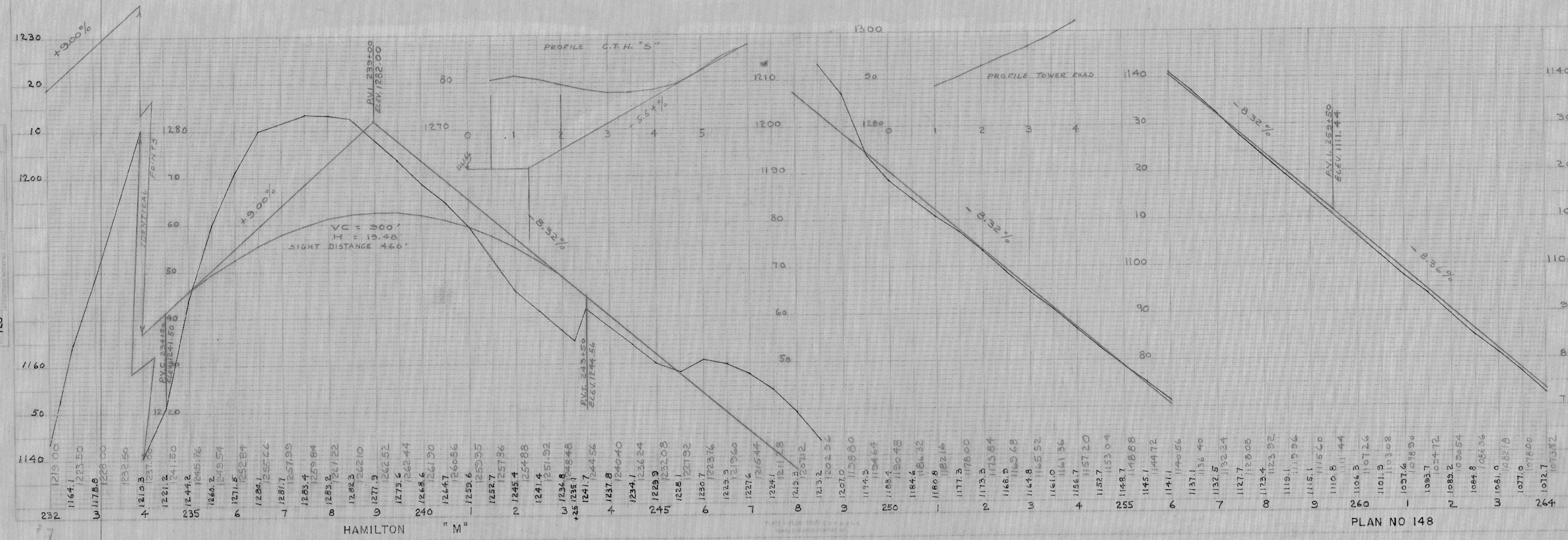
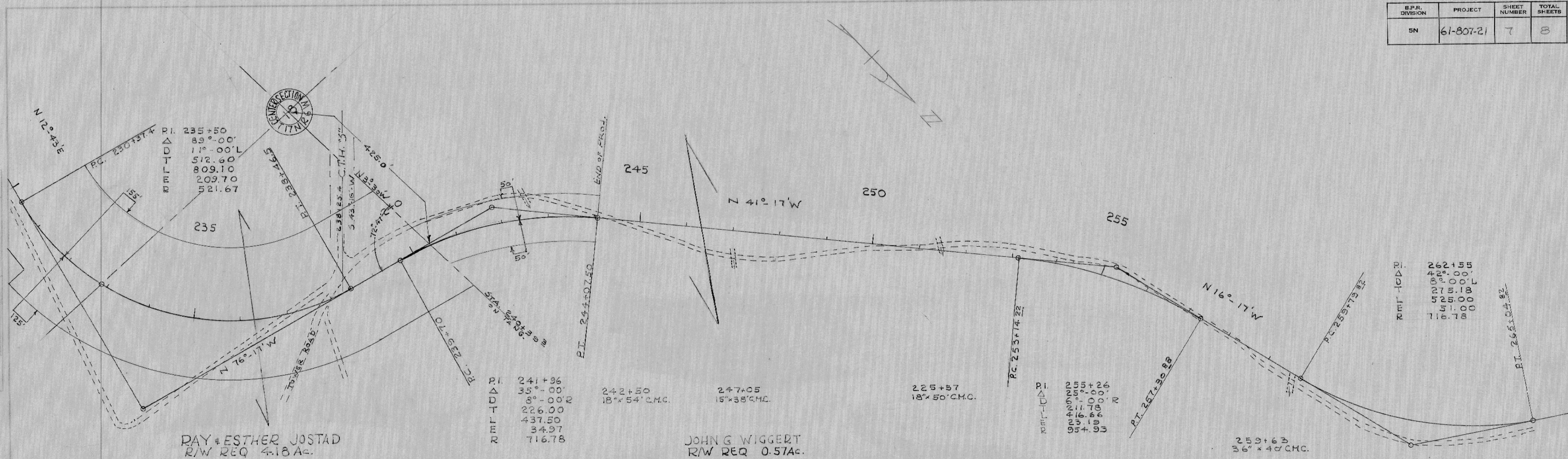
R.N.



B.P.R. DIVISION	PROJECT	SHEET NUMBER	TOTAL SHEETS
5N	61-807-21	7	8

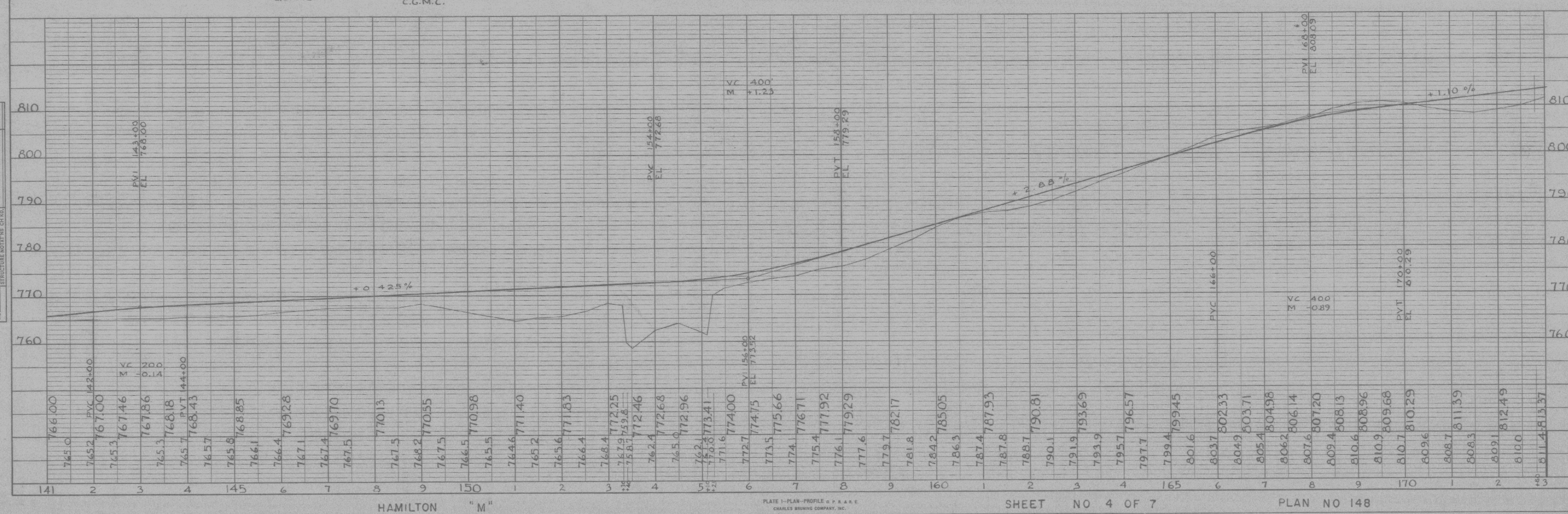
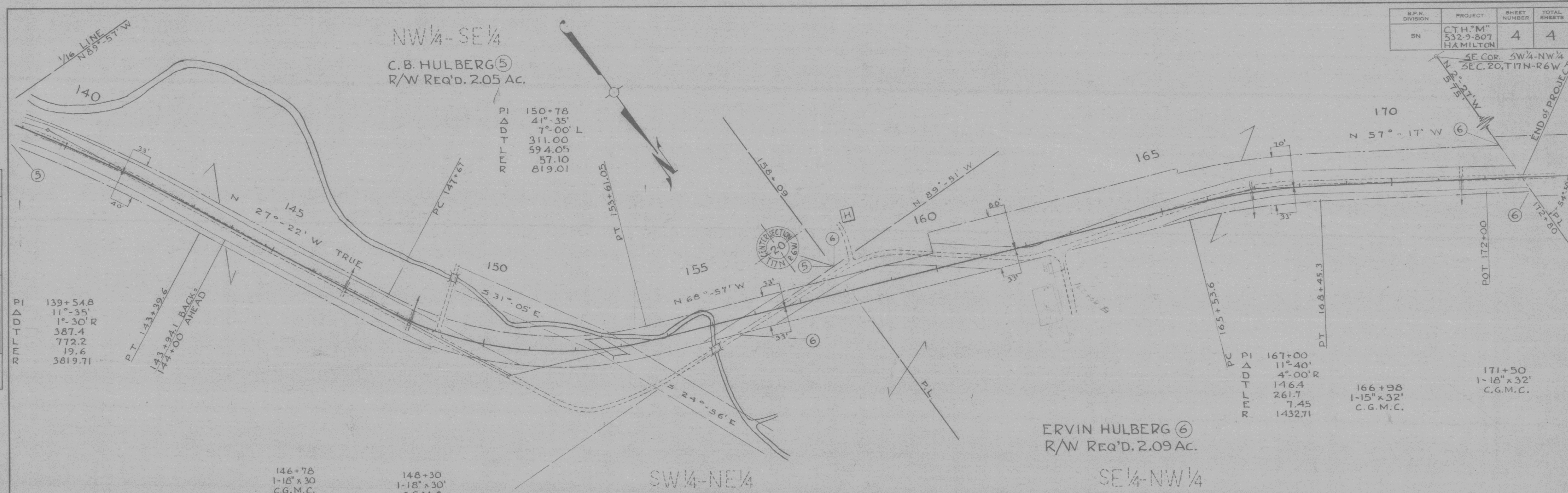
DATE	10/2/52
BY	J.S.H.
CHECKED BY	R.D.N.
SCALE	1" = 40'
PROJECT NO.	1118

DATE	10/2/52
BY	J.S.H.
CHECKED BY	R.D.N.
SCALE	1" = 40'
PROJECT NO.	120



PLAN	DATE
SURVEYED	BY
PLOTTED	
NOTE BOOK	
NO.	

PROFILE	DATE
SURVEYED	BY
PLOTTED	
NOTE BOOK	
NO.	



B.P.R. DIVISION	PROJECT	SHEET NUMBER	TOTAL SHEETS
SN	C.T.H. "M" 532-9-807 HAMILTON	4	4

PLATE 1-PLAN-PROFILE & P.R.A.R.E.
CHARLES BRUNING COMPANY, INC.

SHEET NO 4 OF 7

PLAN NO 148