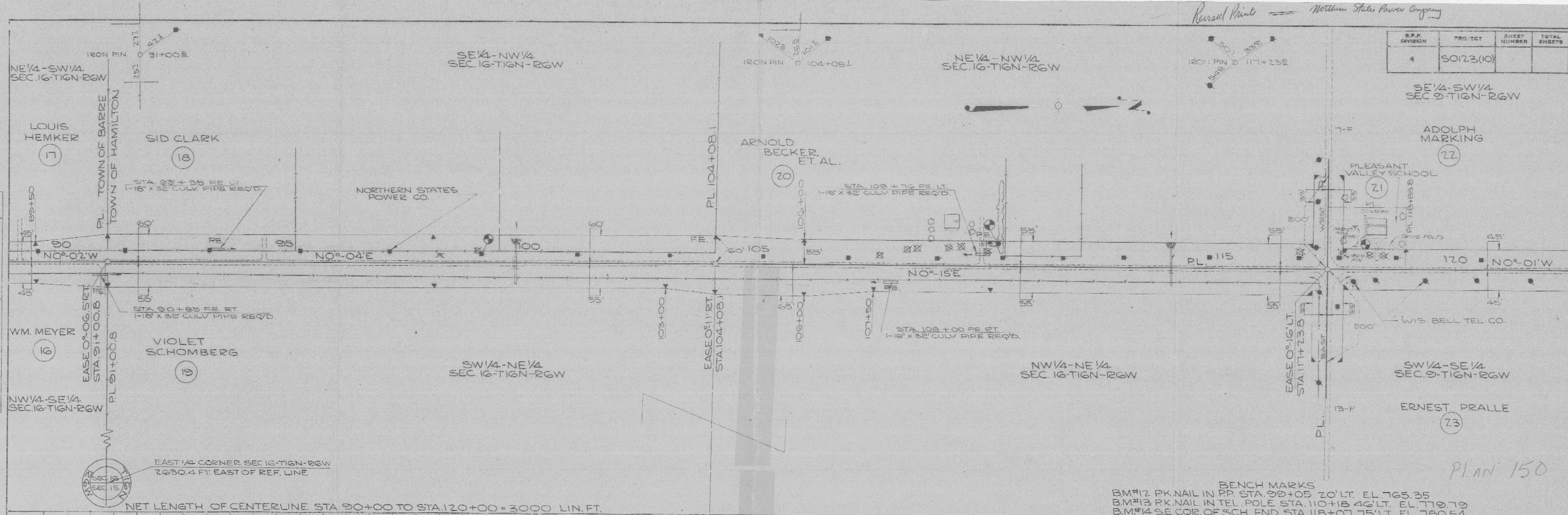


| S.P. DIVISION | PROJECT | SHEET NUMBER | TOTAL SHEETS |
|---------------|-----------|--------------|--------------|
| 4 | 50123(10) | | |

DATE: 10/10/39
 BY: W.S. WILKIE
 SURVEYED: []
 PLOTTED: []
 ALIGNED: []
 CHECKED: []
 RT. OF WAY CHECKED: []
 PLAN: []
 NOTE BOOK: []
 NO. L.L.: []



EAST 1/4 CORNER SEC. 16-T1GN-R6W
 2630.4 FT. EAST OF REF. LINE

NET LENGTH OF CENTERLINE STA. 90+00 TO STA. 120+00 = 3000 LIN. FT.

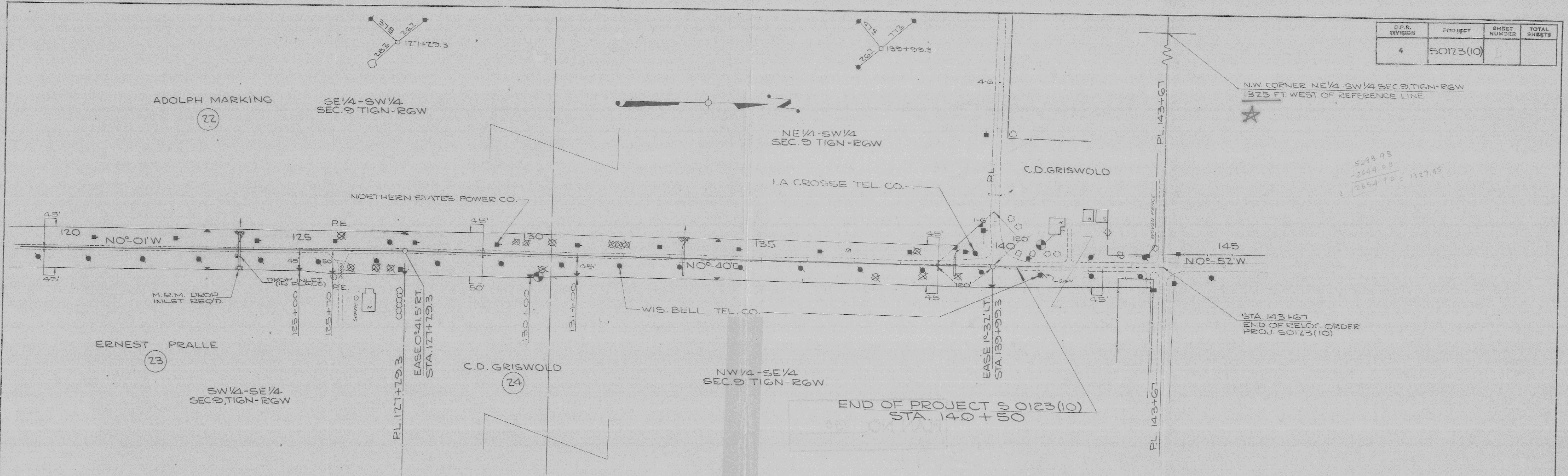
BENCH MARKS
 B.M.#12 PK. NAIL IN PP. STA. 99+05 20' LT. EL. 765.35
 B.M.#13 PK. NAIL IN TEL. POLE STA. 110+18 46' LT. EL. 779.79
 B.M.#14 SE. COR. OF SCH. FND. STA. 118+07 75' LT. EL. 780.54

PLAN 150

UNC = 11.099 CY

| D.P.R. DIVISION | PROJECT | SHEET NUMBER | TOTAL SHEETS |
|-----------------|-----------|--------------|--------------|
| 4 | 50123(10) | 5 | |

DATE 4-5-50
 BY W.S.W.
 P.L.E.
 SURVEYED
 PLOTTED
 ALIGNMENT CHECKED
 RT. OF WAY CHECKED
 PLAN
 NOTE BOOK
 NO. 111



NET LENGTH OF CENTERLINE STA. 120+00 TO STA. 140+50 = 2050.0 LIN. FT.

BENCH MARKS
 BM#15 PK NAIL IN ELM STA. 130+23 26' RT. EL. 772.74
 BM#16 S.E. COR. STEP OF HOUSE STA. 141+30 70' LT. EL. 769.51