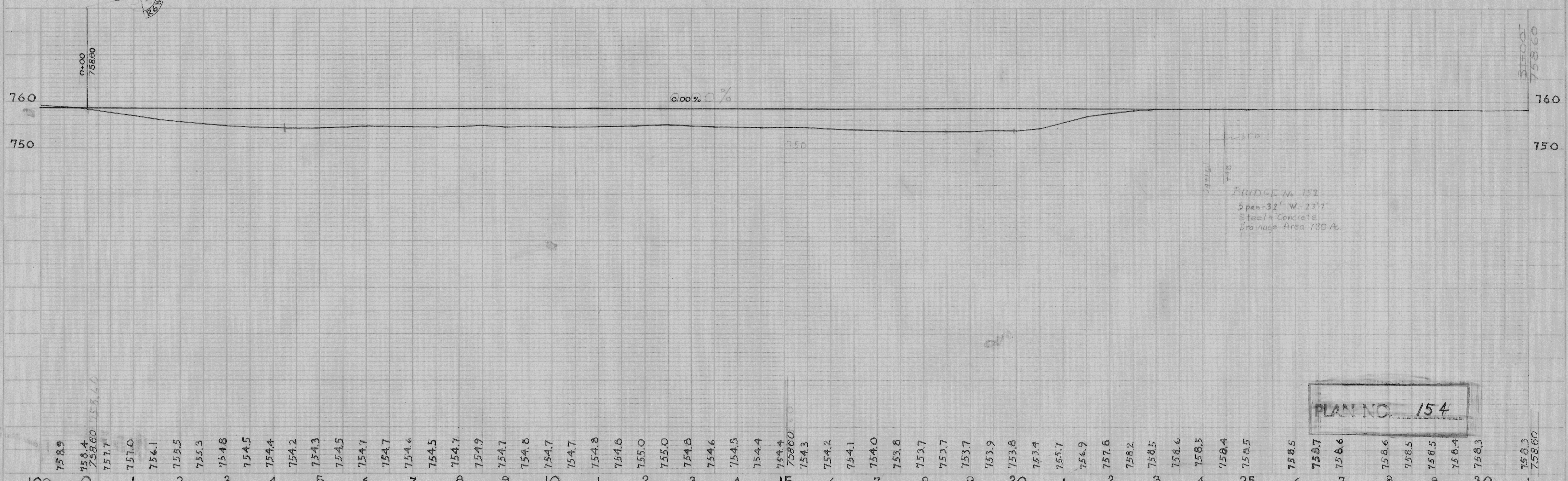
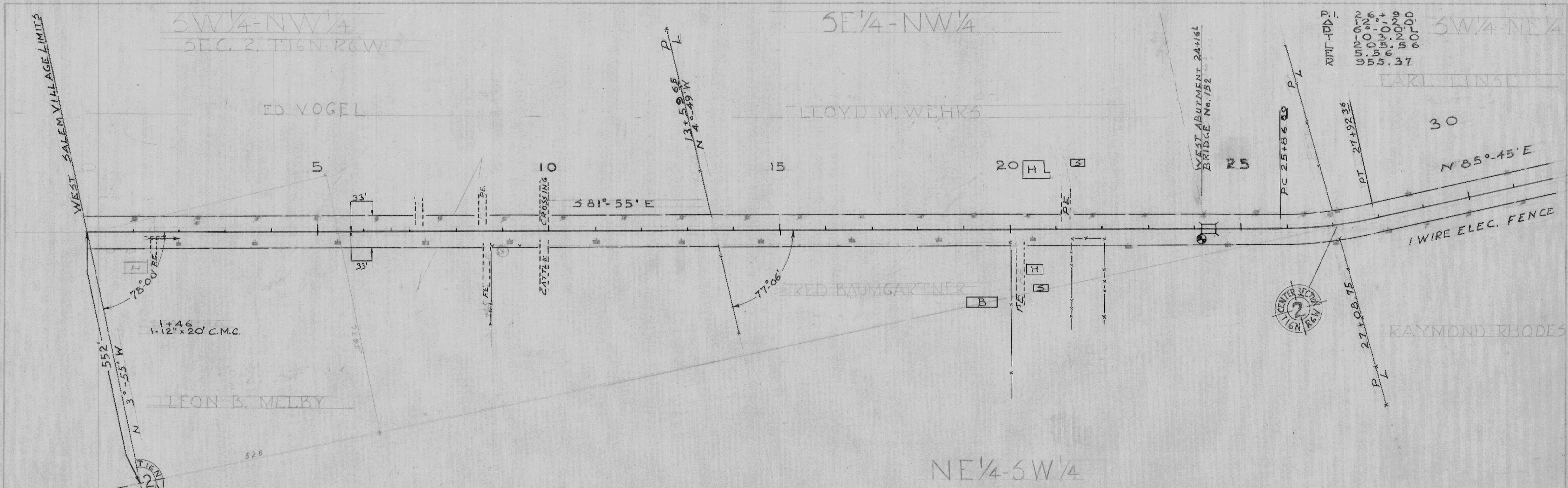


J.S.M. 8/1/60
 PLAN 122
 1-12" x 20' C.M.C.

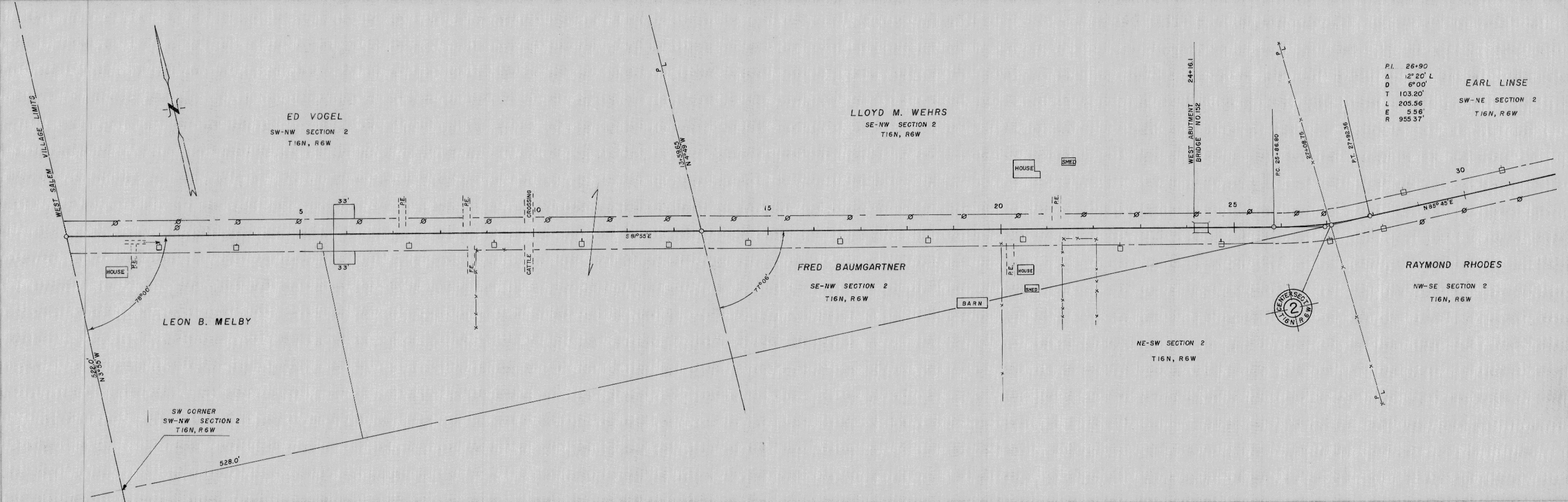
PROFILE 121
 1-12" x 20' C.M.C.



PLAN NO. 154

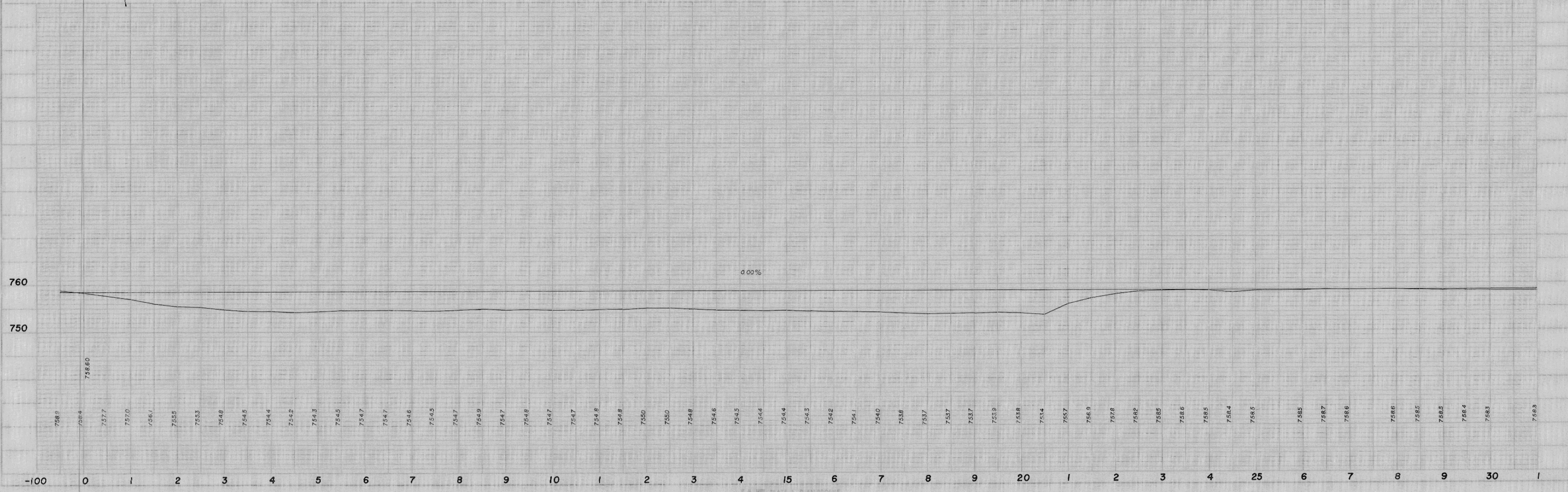
PLAN
 DATE: 8-11-60
 DRAWN BY: J.S.W.
 CHECKED BY: R.C.N.
 RECORDED BY: H.S.N.

PROFILE
 DATE: 8-11-60
 DRAWN BY: J.S.W.
 CHECKED BY: R.C.N.
 RECORDED BY: H.S.N.



P.I. 26+90
 Δ 12° 20' L
 D 6° 00'
 T 103.20'
 L 205.56'
 E 5.56'
 R 955.37'

EARL LINSE
 SW-NE SECTION 2
 T16N, R6W



-100 0 1 2 3 4 5 6 7 8 9 10 11 12 13 14 15 16 17 18 19 20 21 22 23 24 25 26 27 28 29 30 31

C.T.H. "B"

HAMILTON

SHEET 1 OF 3

PLAN NO. 154

K-E PLATE 1, PLAN PROFILE
 SHEETS & EARTH CO.
 187312 IMPERIAL 11-19-64-241

DATE: 8-30-60
 DRAWN BY: J.M. D.C.
 CHECKED BY: H.B.M.
 REVISIONS:
 NO. 122 REDRAWN

PROFILE
 IS FOR THE
 HAMILTON
 PROJECT
 SHEET NO. 154

SW-NE SECTION 2
 T16N, R6W

EARL & VERA LINSE

SE-NE SECTION 2
 T16N, R6W

SW-NW SECTION 1
 T16N, R6W

LA CROSSE COUNTY

NW-SE SECTION 2
 T16N, R6W

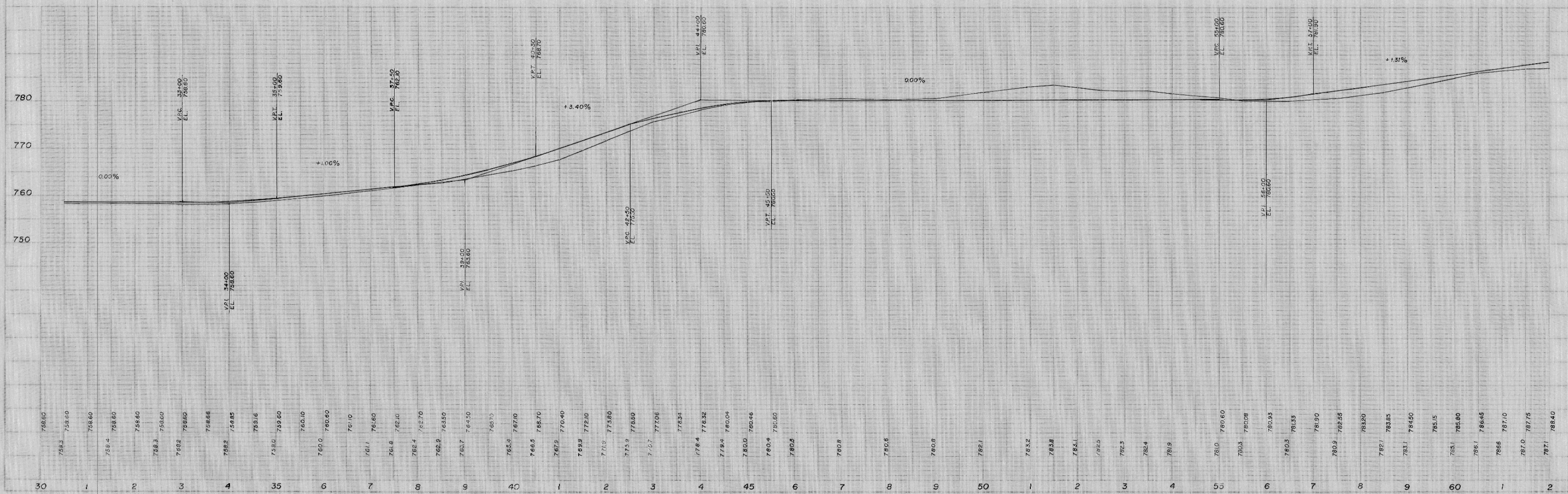
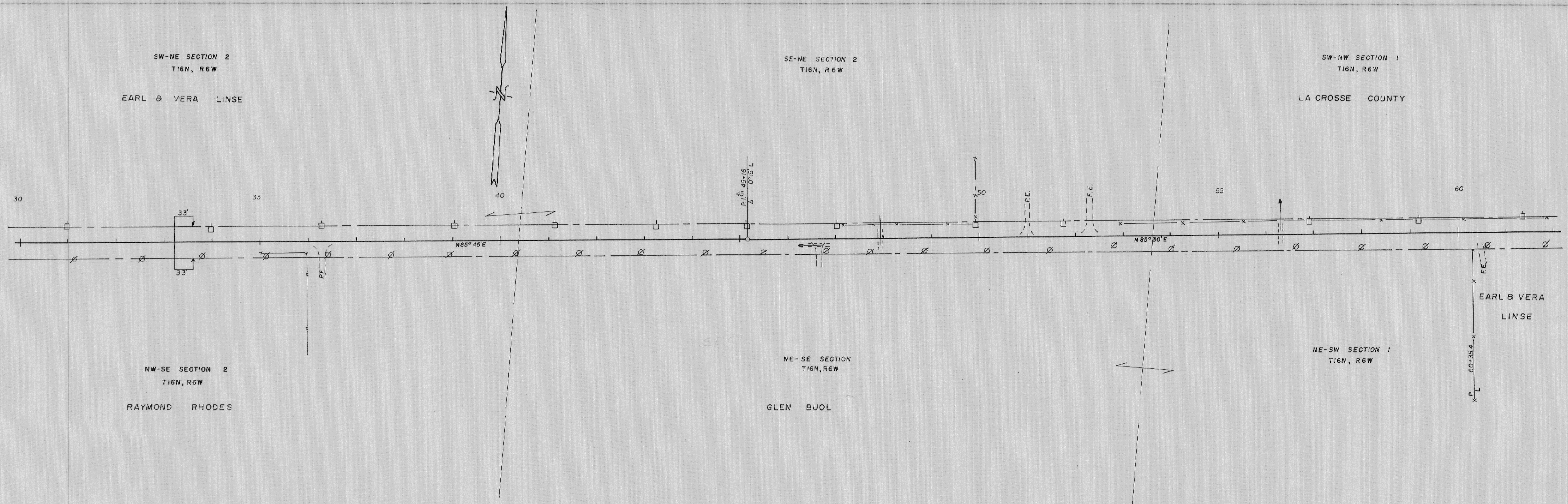
RAYMOND RHODES

NE-SE SECTION
 T16N, R6W

GLEN BUOL

NE-SW SECTION 1
 T16N, R6W

EARL & VERA
 LINSE



C.T.H. "B"

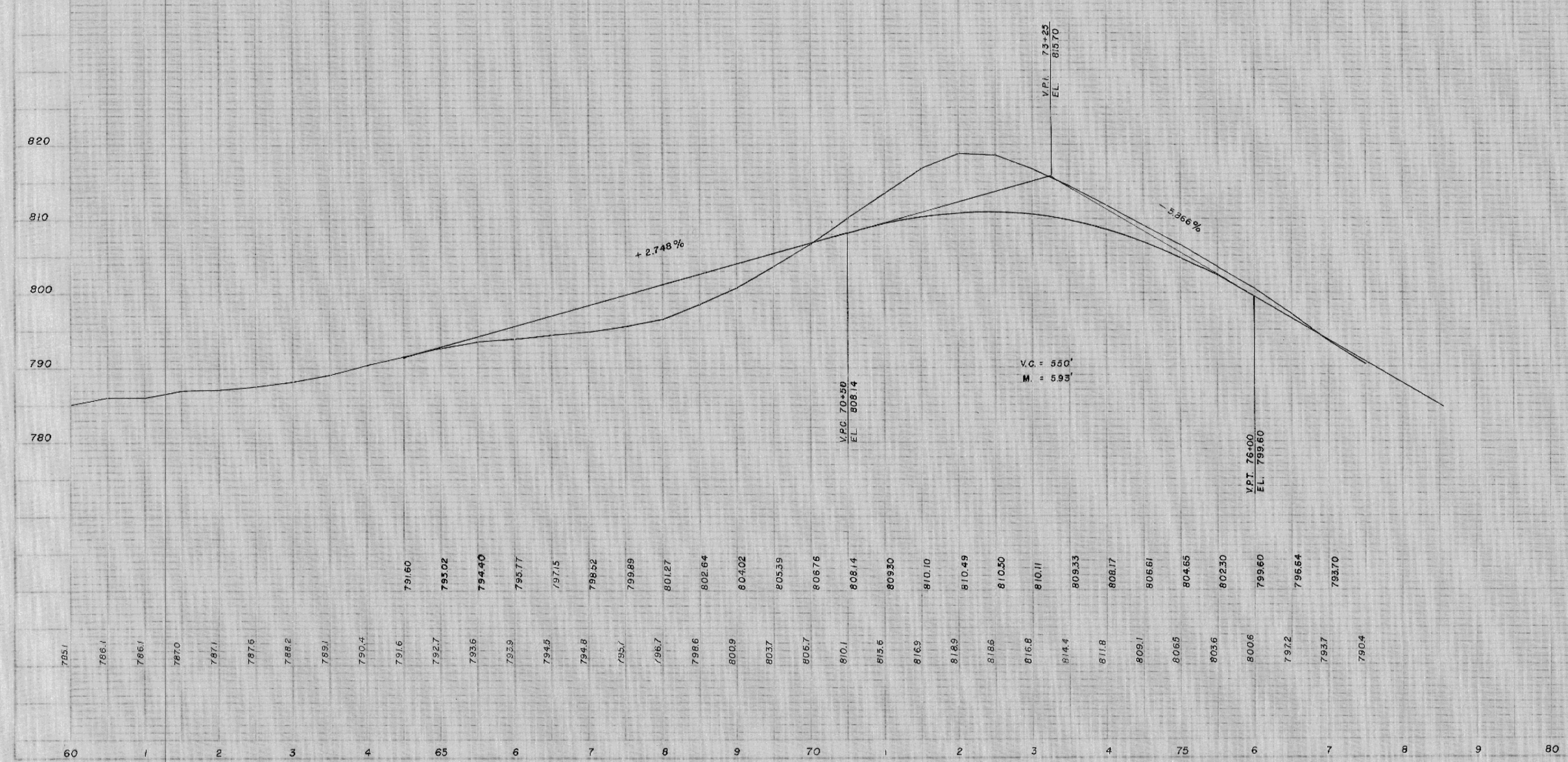
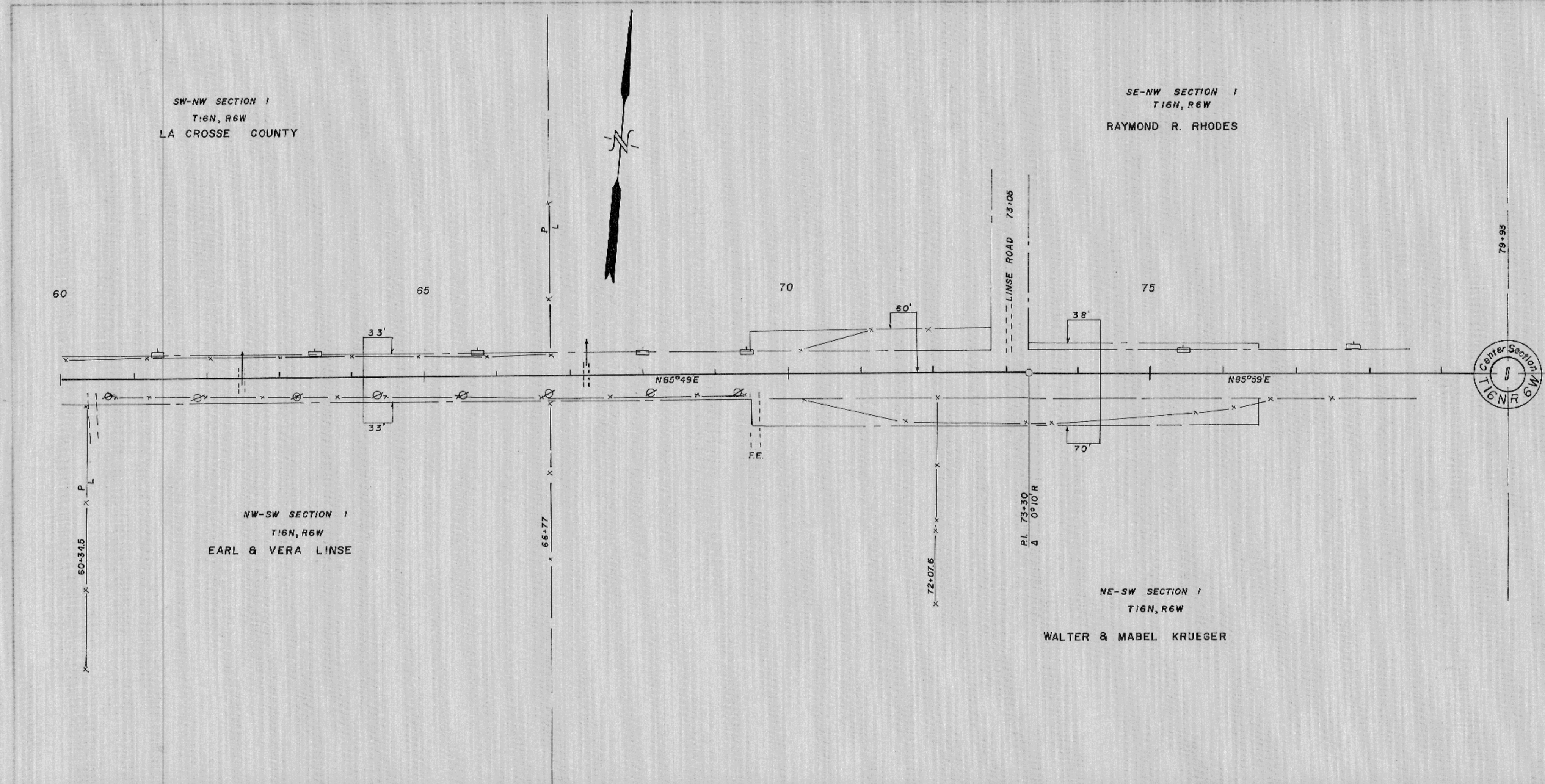
HAMILTON

SHEET 2 OF 3

PLAN NO. 154

PLAN
 DATE: 8-25-60
 DRAWN BY: J.M. D.C.
 CHECKED BY: H.G.N.
 REVISIONS: 7-23-71

PLAN
 DATE: 8-25-60
 DRAWN BY: J.M. D.C.
 CHECKED BY: H.G.N.
 REVISIONS: 7-23-71



C.T.H. "B"

HAMILTON