

S.P.R. DIVISION	PROJECT	SHEET NUMBER	TOTAL SHEETS
4			

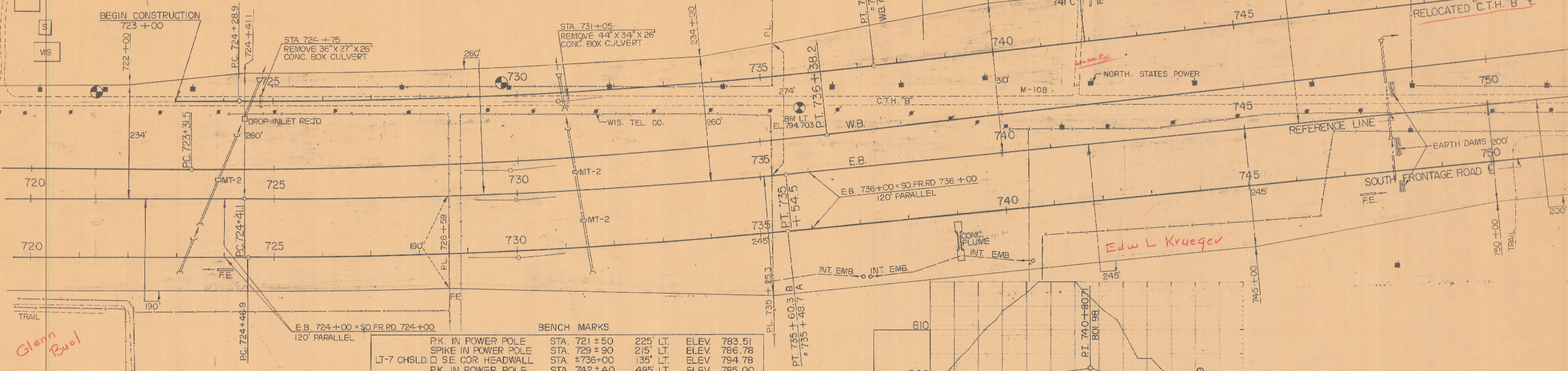
NOT APPROVED TO DATE

SO. FR. RD. P.I.
 STA. 730 + 04.6
 $\Delta = 5^{\circ} - 34'$
 $D = 0^{\circ} - 30'$
 $R = 11,459.2'$
 $T = 557.1'$
 $L = 1113.4'$
 $E = 13.52'$
 $S.E. = .015/FT.$

C.T.H. "B" P.I.
 STA. 730 + 82.6 B
 $\Delta = 6^{\circ} - 32'$
 $D = 0^{\circ} - 30'$
 $R = 11,459.2'$
 $T = 653.68'$
 $L = 1306.7'$
 $E = 18.6'$
 $S.E. = .015/FT.$

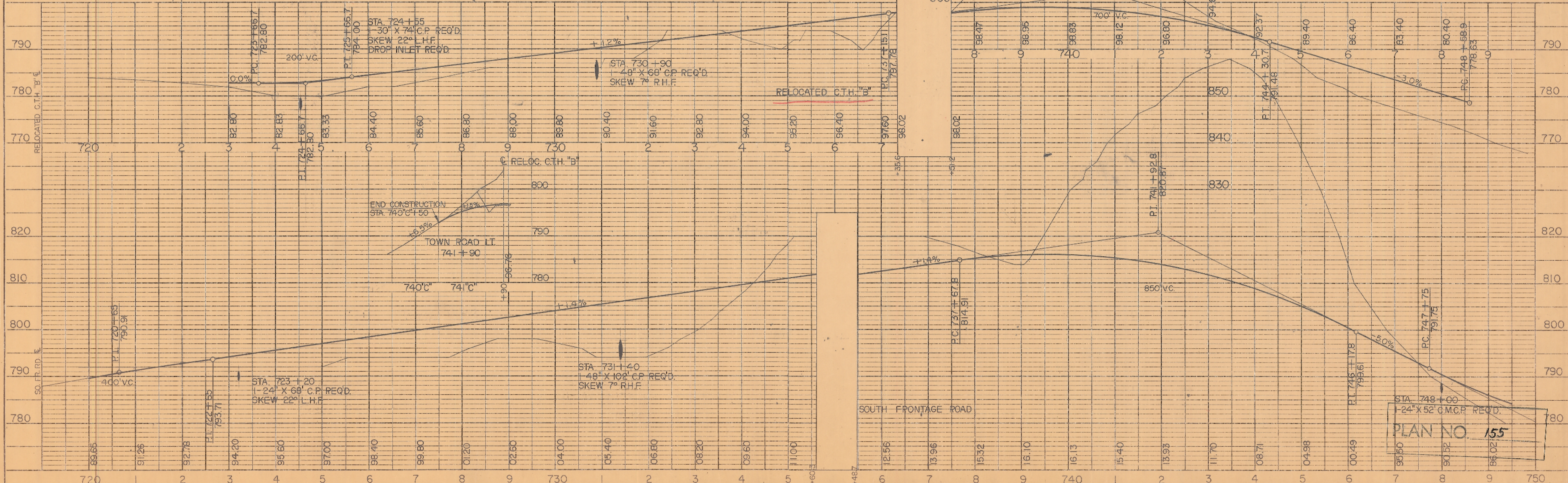
Raymond R Rhodes

Amy L Buol



BENCH MARKS

PK. IN POWER POLE	STA. 721 + 50	225'	LT.	ELEV. 783.51
SPIKE IN POWER POLE	STA. 729 + 90	215'	LT.	ELEV. 786.78
LT-7 CHSLD. SE COR. HEADWALL	STA. 736 + 00	135'	LT.	ELEV. 794.78
PK. IN POWER POLE	STA. 742 + 40	485'	LT.	ELEV. 785.00



PLAN NO. 155

PLAN

DATE	BY	NO.

SURVEYED
 ALIGNED
 RT. OF WAY CHECKED

PROFILE

DATE	BY	NO.

SURVEYED
 GRADES CHECKED
 B.M.'S NOTED
 STRUCTURE NOTATIONS CHECKED

B.P.R. DIVISION	PROJECT	SHEET NUMBER	TOTAL SHEETS
4			

C.T.H. "B" P.I.
 STA. 764 + 13.6 B
 $\Delta = 16^{\circ}06'$
 $D = 1^{\circ}30'$
 $R = 3819.83'$
 $T = 540.2'$
 $L = 1073.33'$
 $E = 38.0'$
 $S.E. = .025'/FT.$

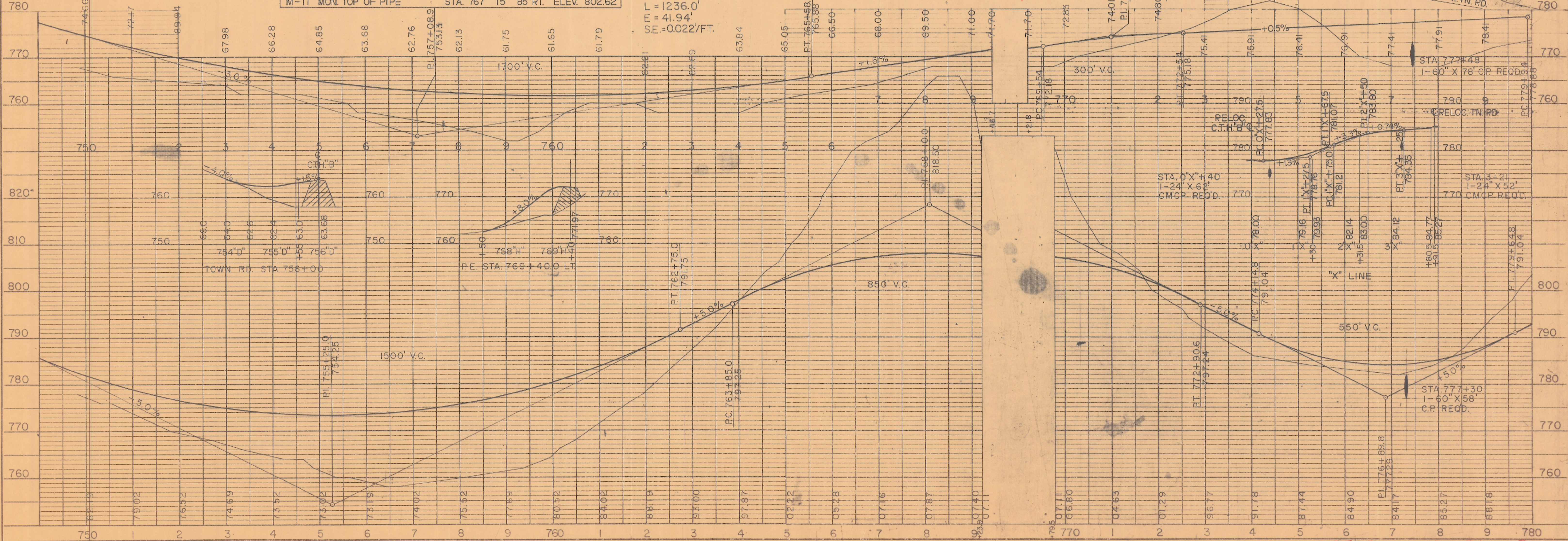
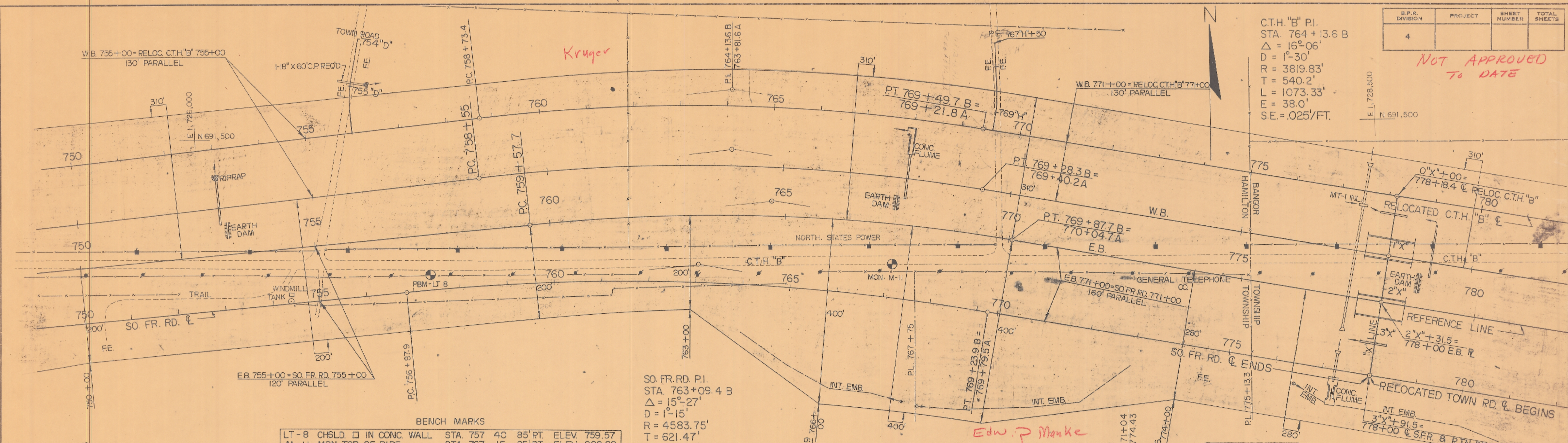
*NOT APPROVED
 TO DATE*

DATE	BY

PLAN
 SURVEYED
 PLOTTED
 ALIGNMENT CHECKED
 RT. OF WAY CHECKED
 NO.

DATE	BY

PROFILE
 SURVEYED
 PLOTTED
 GRADES CHECKED
 B.W. 3 NOTED
 STANDARD NOTATIONS CHKD.
 NO.



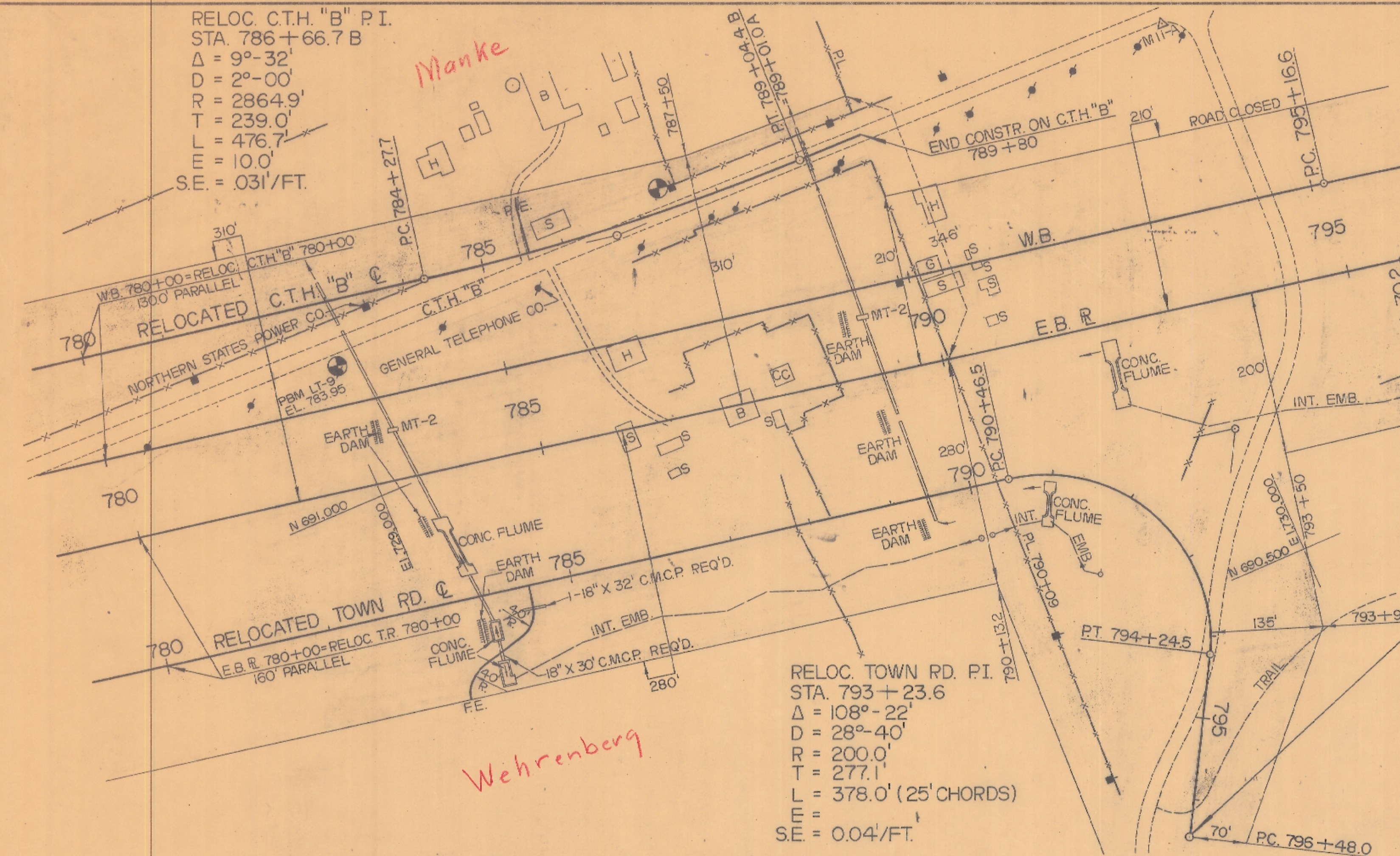
S.P.R. DIVISION	PROJECT	SHEET NUMBER	TOTAL SHEETS
4		6	

NOT APPROVED TO DATE

RELOC. C.T.H. "B" P.I.
 STA. 786 + 66.7 B
 $\Delta = 9^{\circ}-32'$
 $D = 2^{\circ}-00'$
 $R = 2864.9'$
 $T = 239.0'$
 $L = 476.7'$
 $M = 10.0'$
 $S.E. = .031'/FT.$

Manke

PLAN	DATE
NO.	



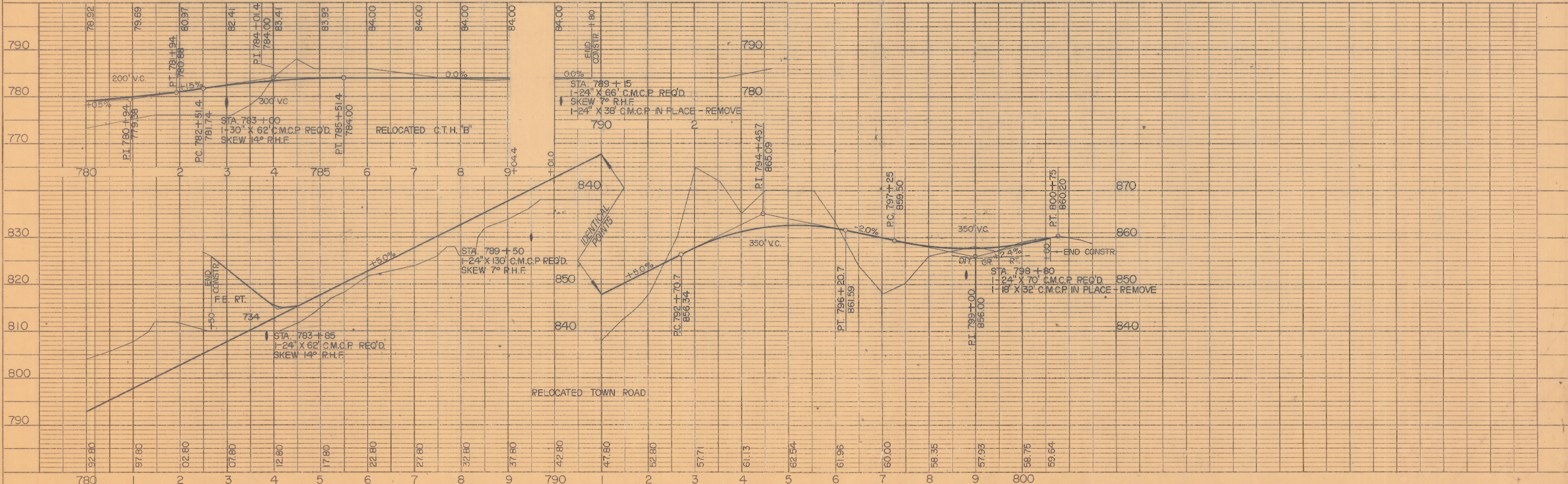
RELOC. TOWN RD. P.I.
 STA. 793 + 23.6
 $\Delta = 108^{\circ}-22'$
 $D = 28^{\circ}-40'$
 $R = 200.0'$
 $T = 277.1'$
 $L = 378.0' (25' CHORDS)$
 $S.E. = 0.04'/FT.$

RELOC. TOWN RD. P.I.
 STA. 797 + 97.3
 $\Delta = 29^{\circ}-54'$
 $D = 10^{\circ}-00'$
 $R = 573.1'$
 $T = 153.0'$
 $L = 299.0' (50' CHORDS)$
 $S.E. = 0.04'/FT.$

BENCH MARKS

LT-9 RR SPIKE IN TEL. POLE	STA. 782 + 80	155' LT.	ELEV. 783.95
P.K. IN POWER POLE	STA. 787 + 25	275' LT.	ELEV. 783.21

PROFILE	DATE
NO.	



DIST. 5 SEPT. 20, 1960