

NE 1/4 - SE 1/4

SE 1/4 - NE 1/4

SCOTT & LUCILLE LENSER
NE 1/4 - NE 1/4
SEC. 30, T17N, R6W

LESTER & LOIS LA FLEUR

Joseph J. & Viola
Kommeyer



9.9.63
S. 11.53
J.M.
R.E.B.

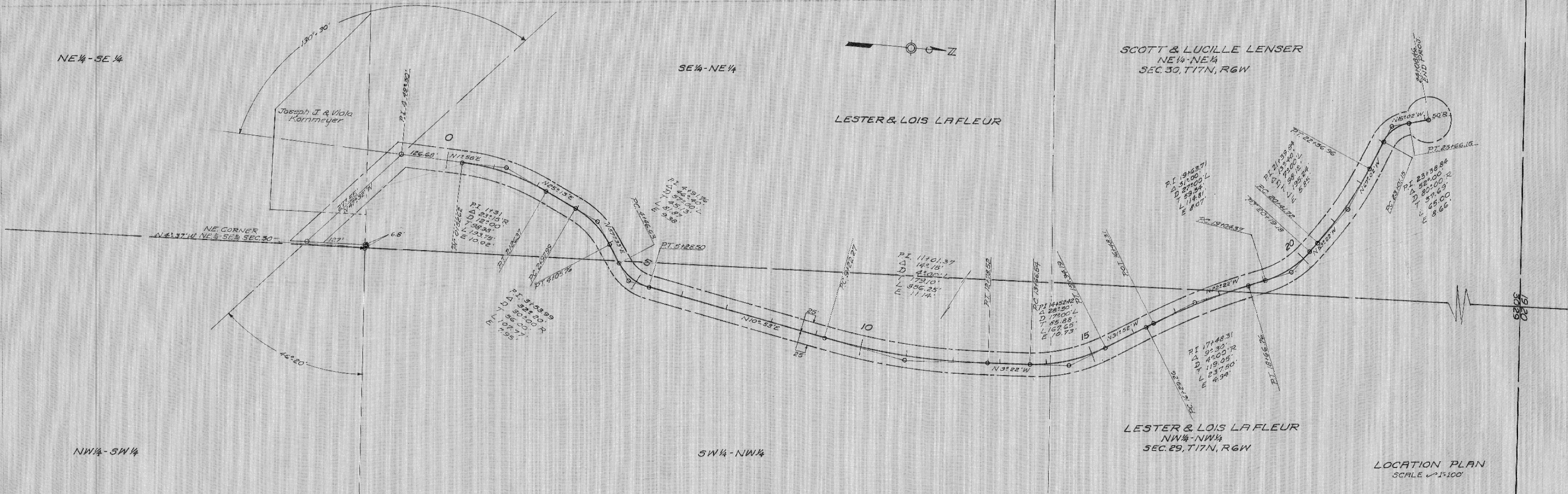
NE CORNER
N 43° 37' W NE 1/4 SE 1/4 SEC. 30

NW 1/4 - SW 1/4

SW 1/4 - NW 1/4

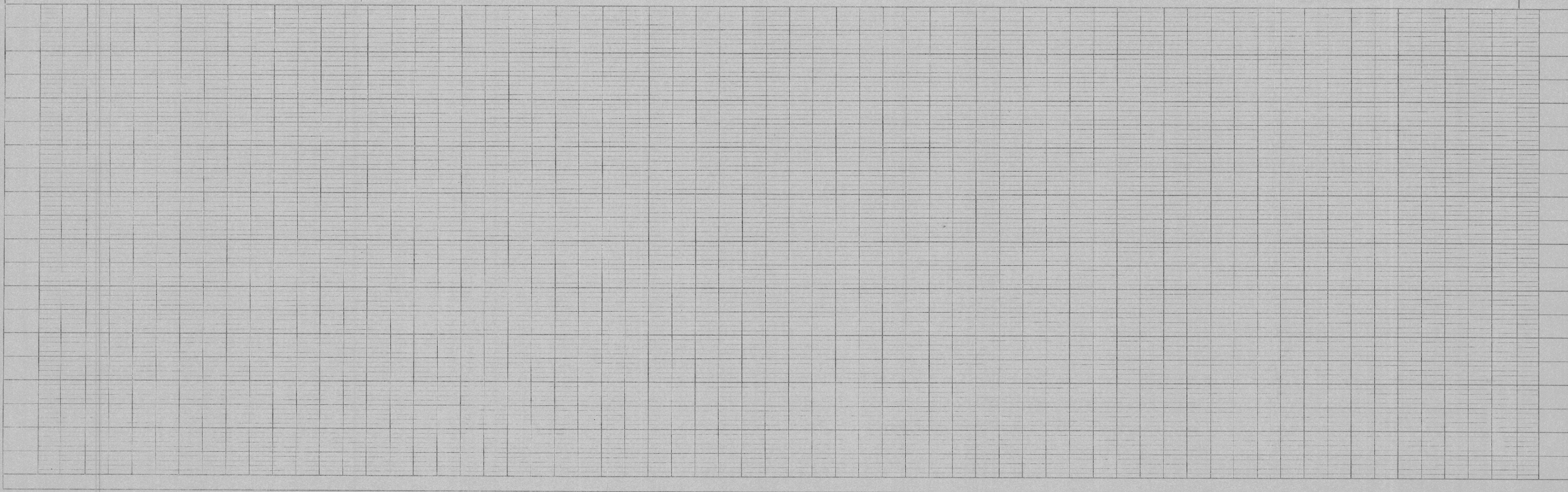
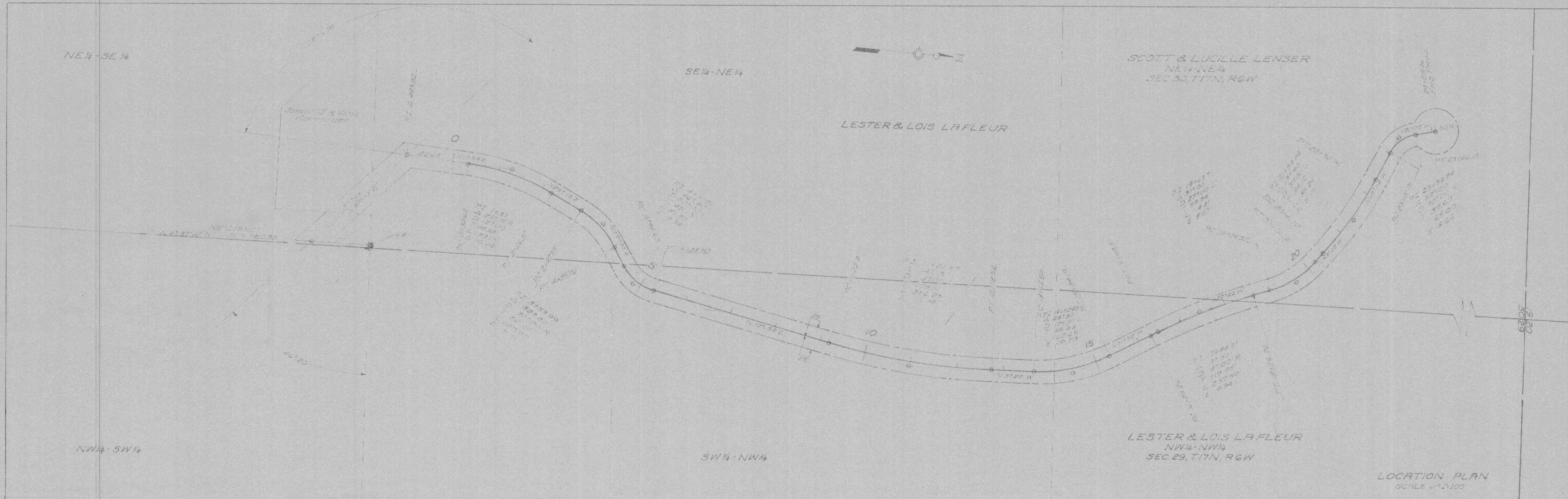
LESTER & LOIS LA FLEUR
NW 1/4 - NW 1/4
SEC. 29, T17N, R6W

LOCATION PLAN
SCALE 1"=100'



PLAN
 SURVEYED BY: J. J. K. [unclear]
 ALIGNED & CHECKED BY: J. J. K. [unclear]
 RT. OF WAY CHECKED BY: J. J. K. [unclear]
 NO. 722

PROFILE
 SURVEYED BY: J. J. K. [unclear]
 CHECKS CHECKED BY: J. J. K. [unclear]
 NO. 722



EXT. EVENSON ROAD

PLATE 1—PLAN PROFILE & P.R. STANDARD
THE FREDERICK POST CO., CHICAGO

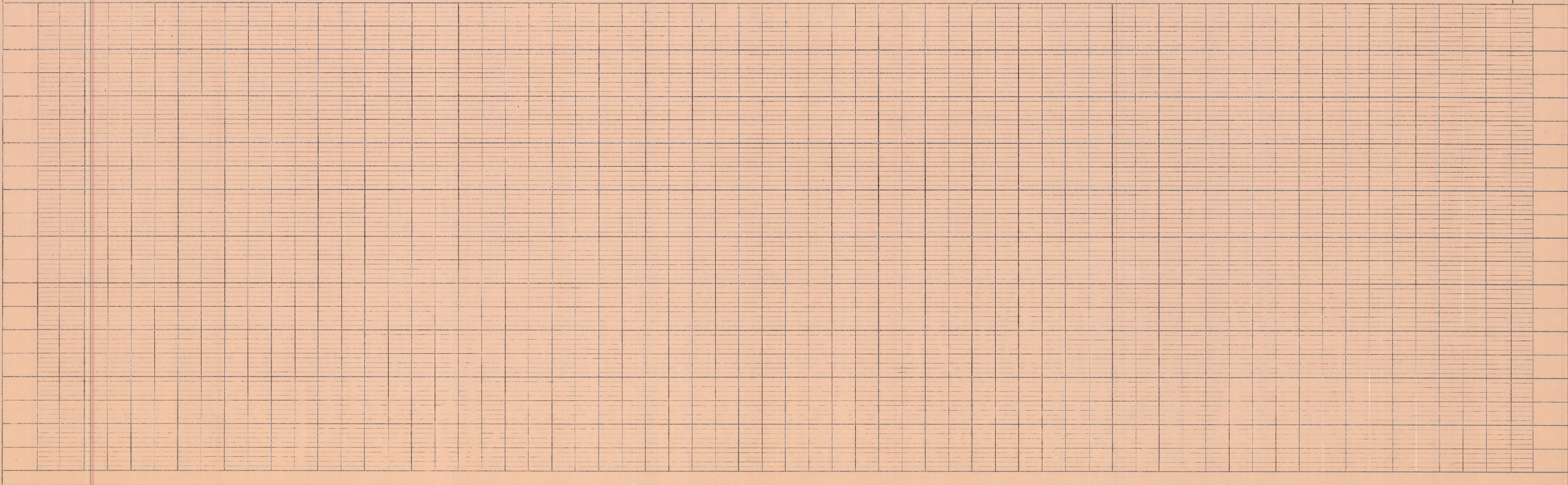
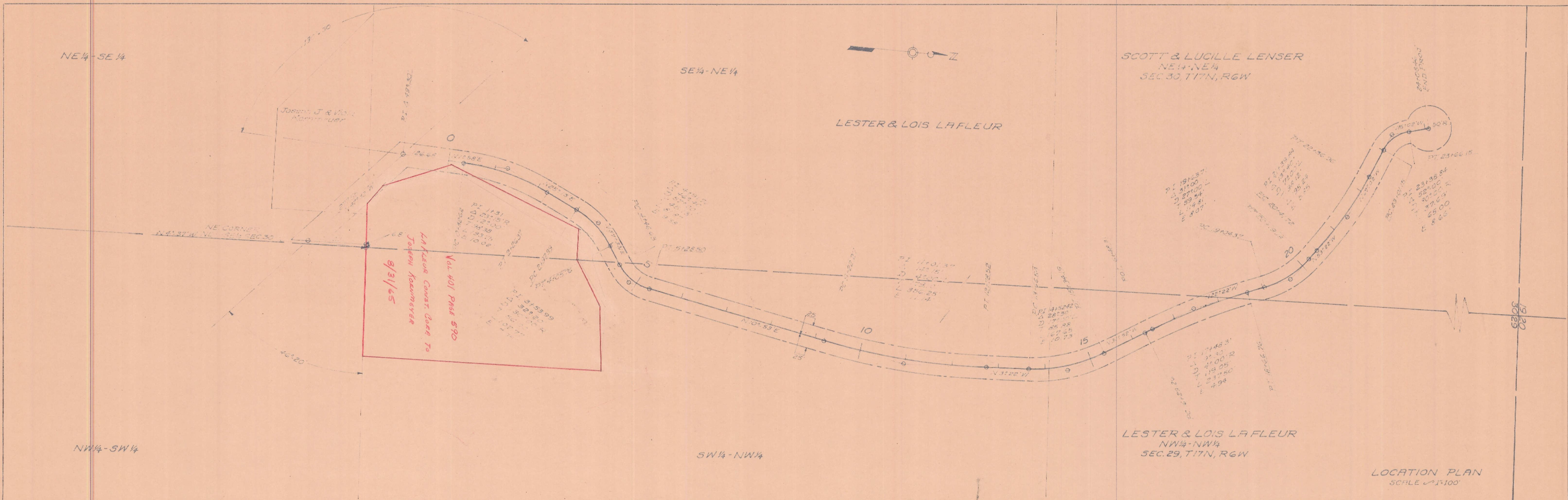
HAMILTON

SHEET 1 OF 1

PLAN NO. 373

DATE 12-22-63
 BY A.C. 2
 SURVEYED PLATTED
 NOTE BOOK GRADES CHECKED
 NO. 222

DATE
 BY
 SURVEYED PLOTTED
 NOTE BOOK GRADES CHECKED
 NO. 222



EXT. EVENSON ROAD

PLATE 1-PLAN PROFILE B. P.R. STANBATE
 THE FREDERICK POST CO., Chicago

HAMILTON

SHEET 1 OF 1

PLAN NO 373