

CARLET & VIRGINIA MILLER  
SE 1/4 - SW 1/4  
SEC 31, T17N, R6W

DATE: 5/13/70  
FILE: 443B  
DRAWN BY: P.M.J.  
CHECKED BY: [blank]  
SCALE: AS SHOWN  
SHEET: 124

DATE: [blank]  
FILE: [blank]  
DRAWN BY: [blank]  
CHECKED BY: [blank]  
SCALE: [blank]  
SHEET: 126



VERA SULLIVAN  
NE 1/4 - NW 1/4  
SEC. 6, T17N, R6W

6-13-70  
6-23-70

REB  
P.M.V.

124

7-13-70

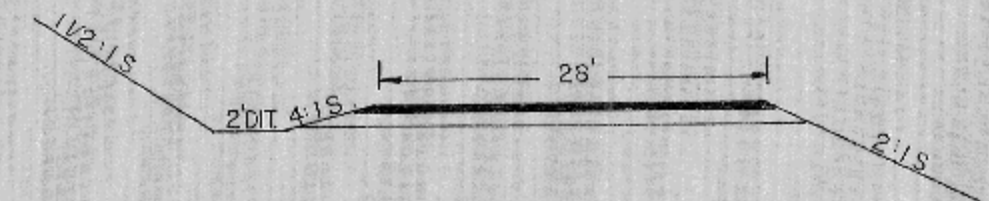
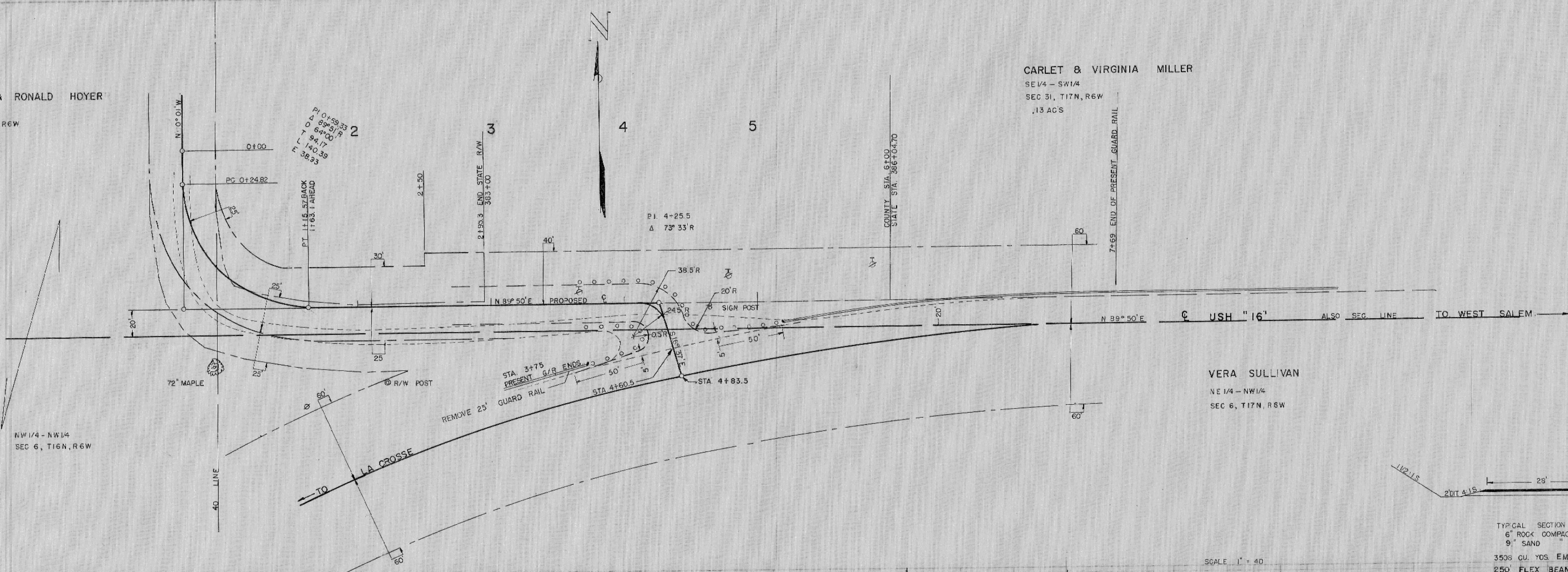
REB

126

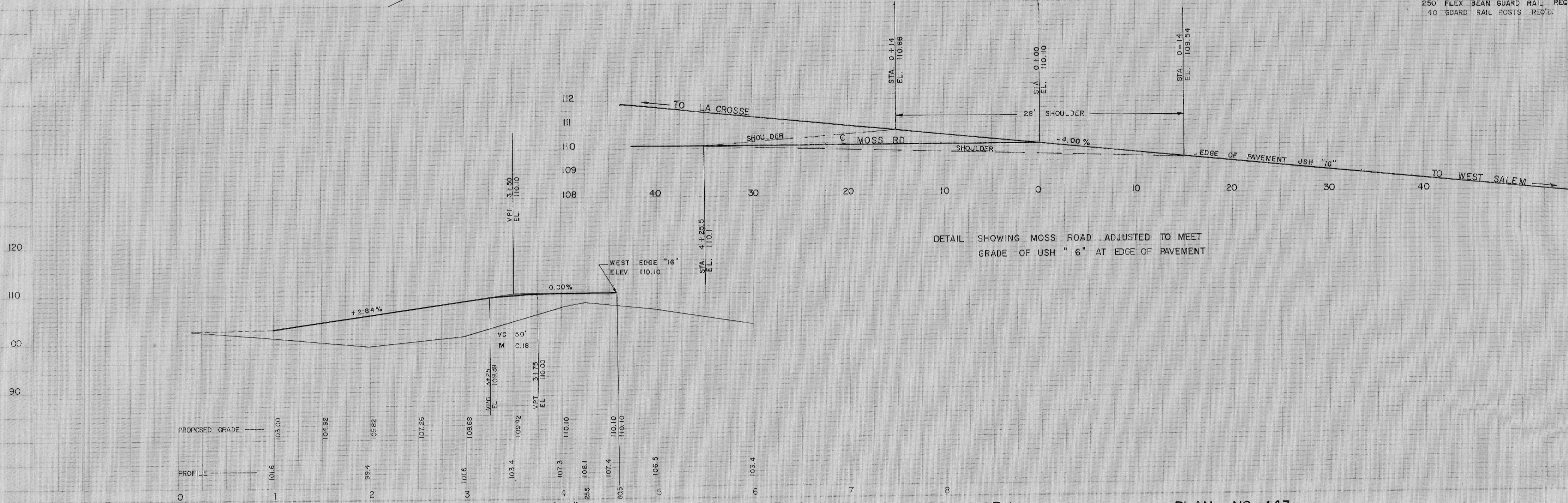
RAYMOND & RONALD HOYER  
SW 1/4 - SW 1/4  
SEC 31, T17N, R6W

CARLET & VIRGINIA MILLER  
SE 1/4 - SW 1/4  
SEC 31, T17N, R6W  
.13 ACS

VERA SULLIVAN  
NE 1/4 - NW 1/4  
SEC 6, T17N, R6W



TYPICAL SECTION  
 6" ROCK COMPACTED  
 9" SAND  
 3500 CU. YDS. EMB.  
 250' FLEX BEAM GUARD RAIL REQ'D.  
 40' GUARD RAIL POSTS REQ'D.



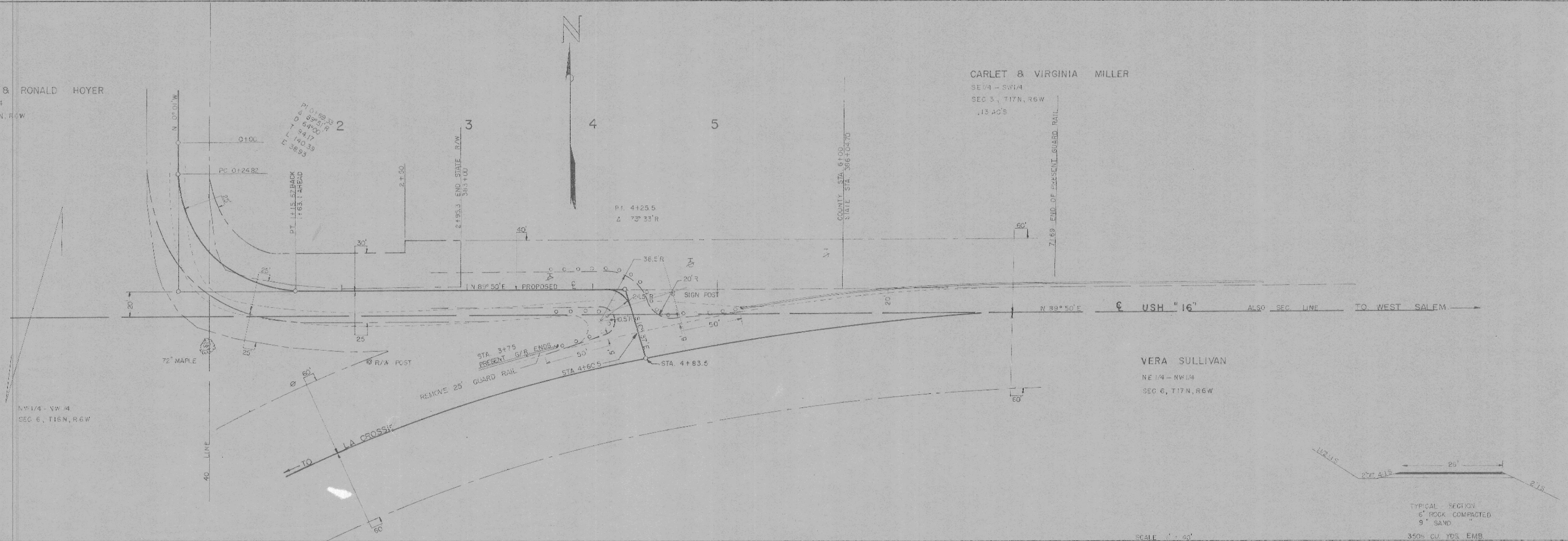
PLAN  
 SURVEYED BY: R.E.B.  
 DATE: 7-13-70  
 NOTE BOOK: B-13-70  
 No. 123

PROFILE  
 SURVEYED BY: R.E.B.  
 DATE: 7-13-70  
 NOTE BOOK: B-13-70  
 No. 123

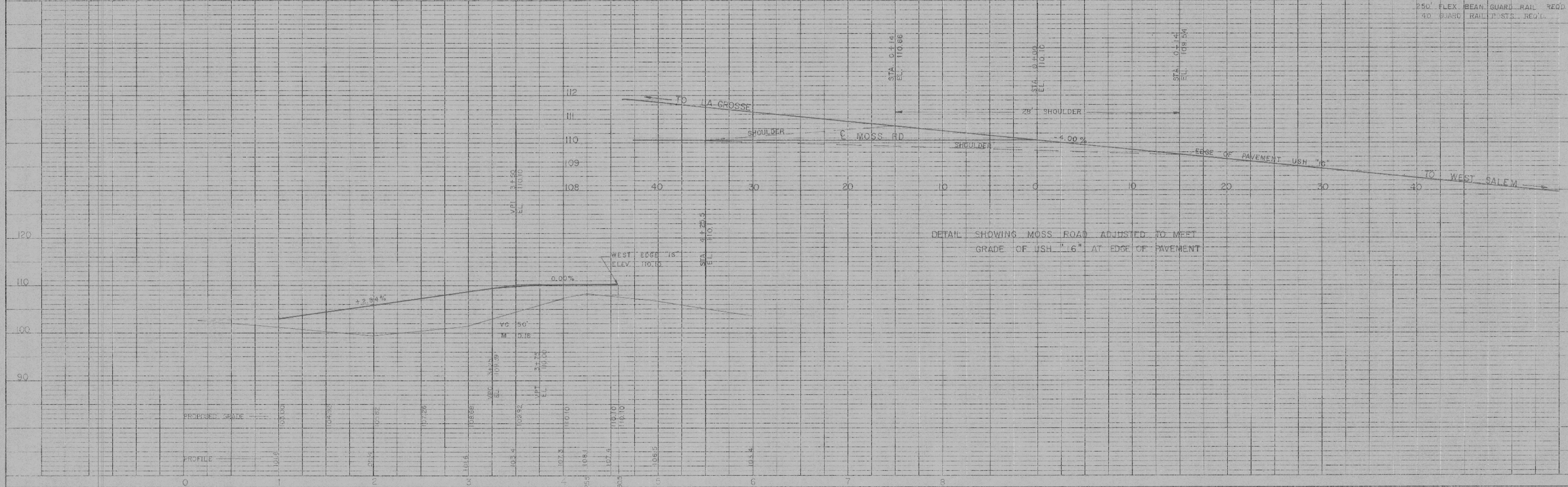
RAYMOND & RONALD HOYER  
 SW 1/4 - SW 1/4  
 SEC. 2, T17N, R6W

CARLET & VIRGINIA MILLER  
 SE 1/4 - SW 1/4  
 SEC. 5, T17N, R6W  
 .13 AC'S

VERA SULLIVAN  
 NE 1/4 - NW 1/4  
 SEC. 6, T17N, R6W



TYPICAL SECTION:  
 6" ROCK COMPACTED  
 9" SAND  
 3505 CU. YDS. EMB.  
 250' FLEX BEAN GUARD RAIL REQ'D.  
 40' GUARD RAIL POSTS REQ'D.



RELOCATION — INTERSECTION OF MOSS RD & U.S.H. "16"

PLATE 1, PLAN-PROFILE

SHEET 1 OF 1

PLAN NO. 443

48 7010 IMPERIAL