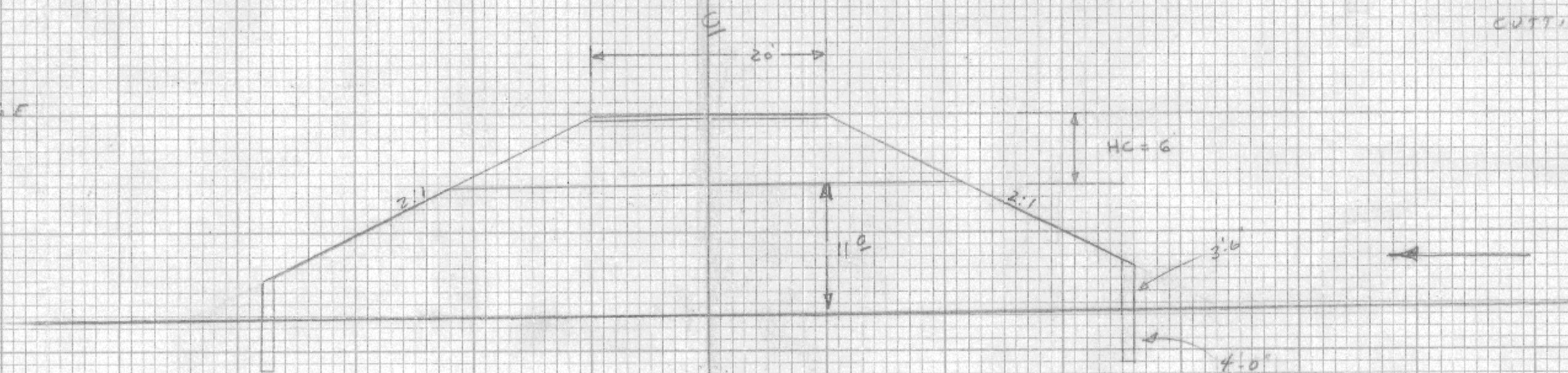
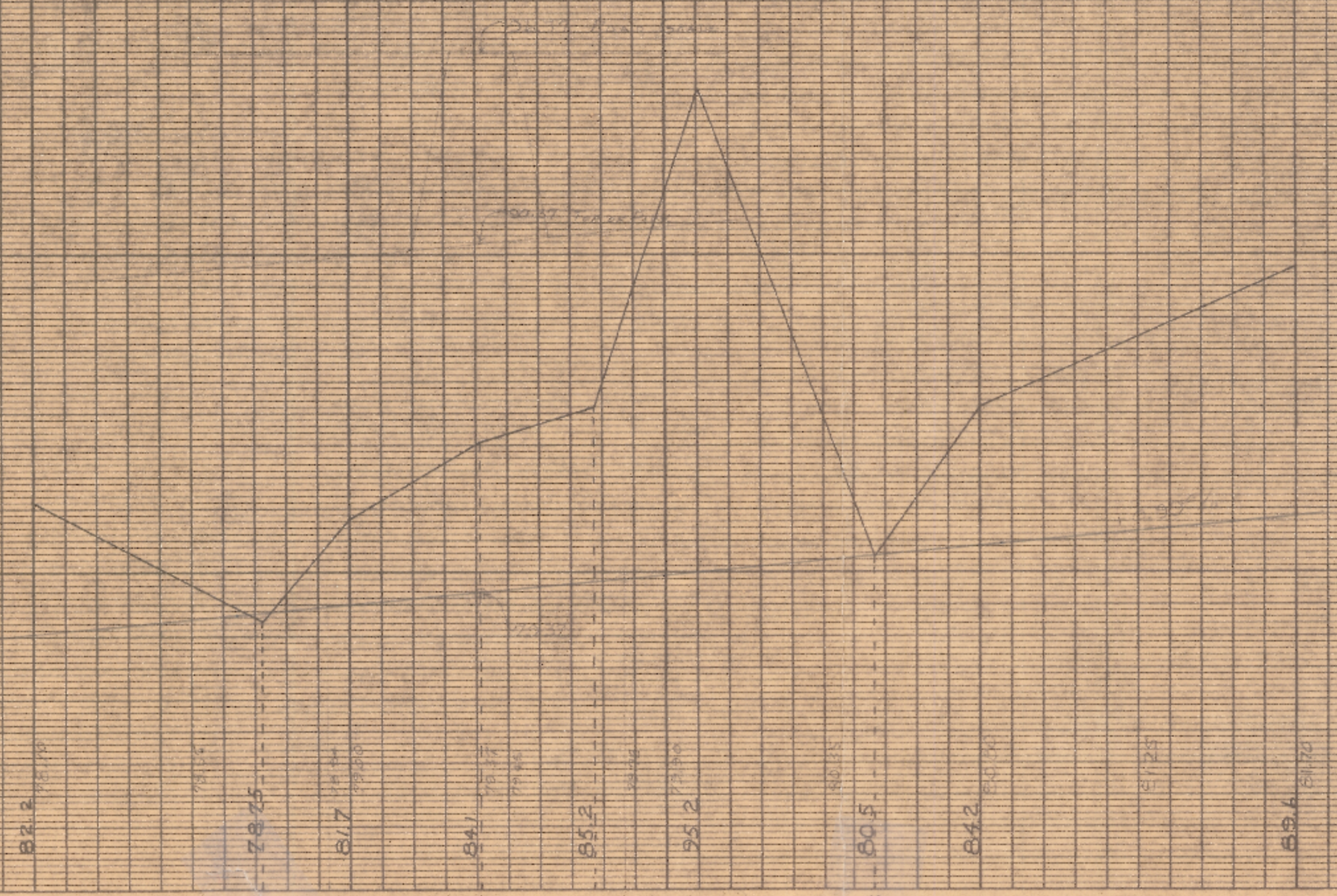
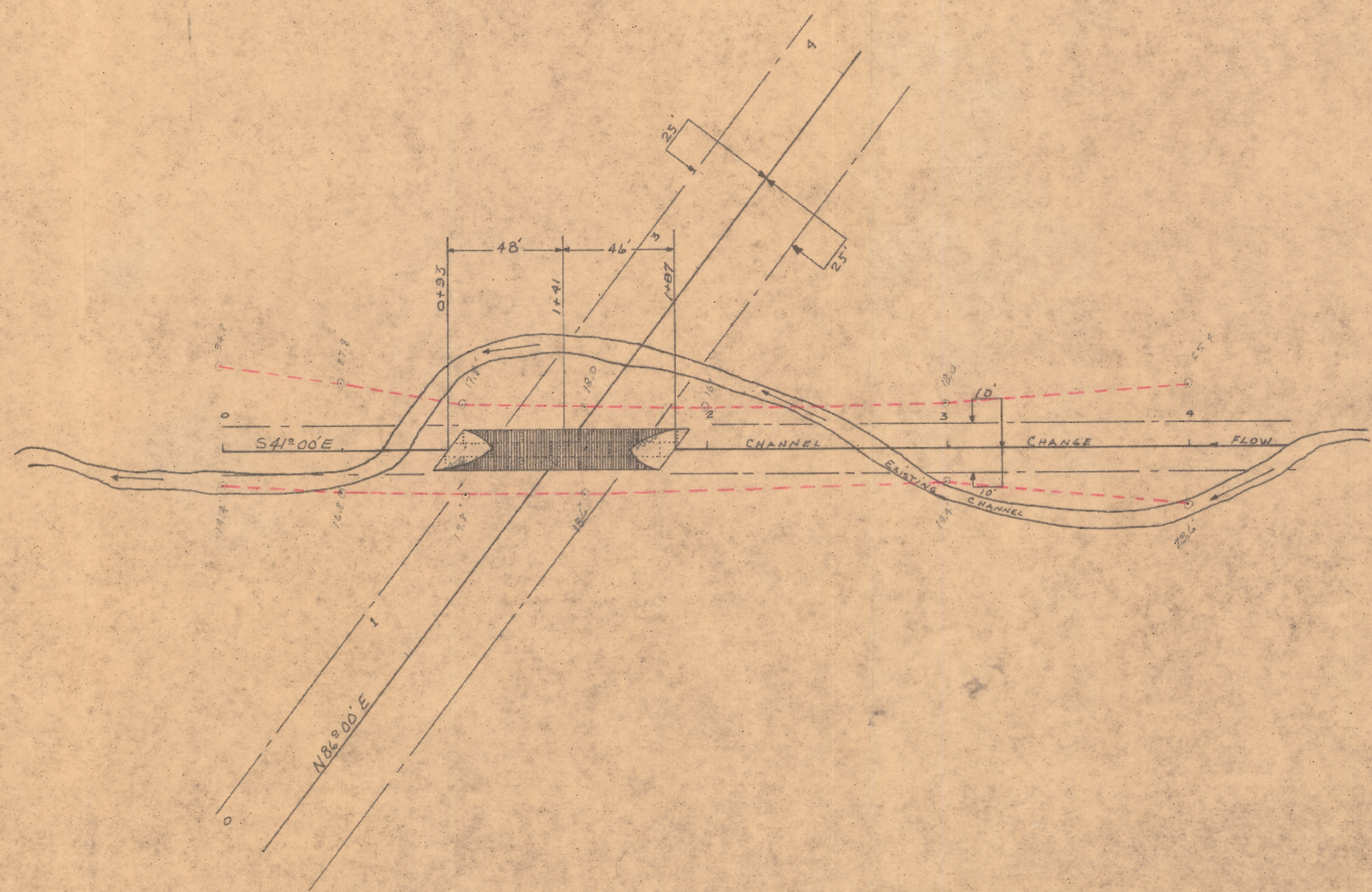


1- ARMO MULTI-PLATE PIPE-ARCH  
 31" COR. RADIUS - SKEWED - 37° RHE  
 AREA = 143 SQ FT BEVELED - 2:1 TO TOP  
 IF 15 PI COR PLATES  
 SPAN = 10'-6" (PI = 168")  
 RISE = 11'-0"  
 H-20- LOAD = 7 GAGE  
 LENGTH = 94'  
 PAY LENGTH = 90' @ 97.27/FT  
 8754.30  
 CUTTING  
 CHG 360.00  
 89114.30

PLEASANT VALLEY BRIDGE  
 TOWN OF HAMILTON  
 LA CROSSE CO- WIS  
 J.S. AUG 1967



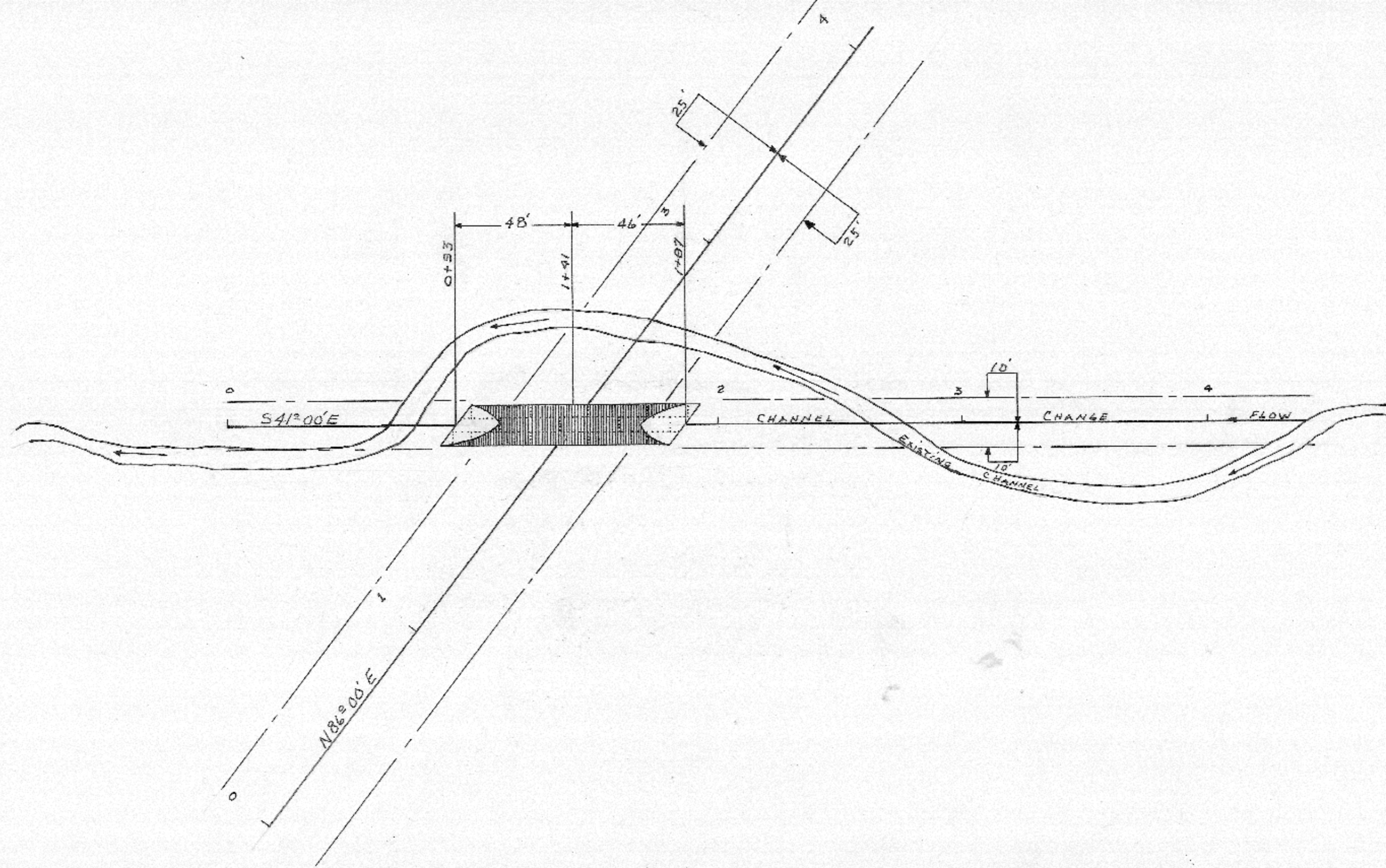




CHARLES BRUNING COMPANY  
 PROFILE PLATE A  
 PRINTED IN U.S.A.

CHARLES BRUNING COMPANY  
 PROFILE PLATE A  
 PRINTED IN U.S.A.



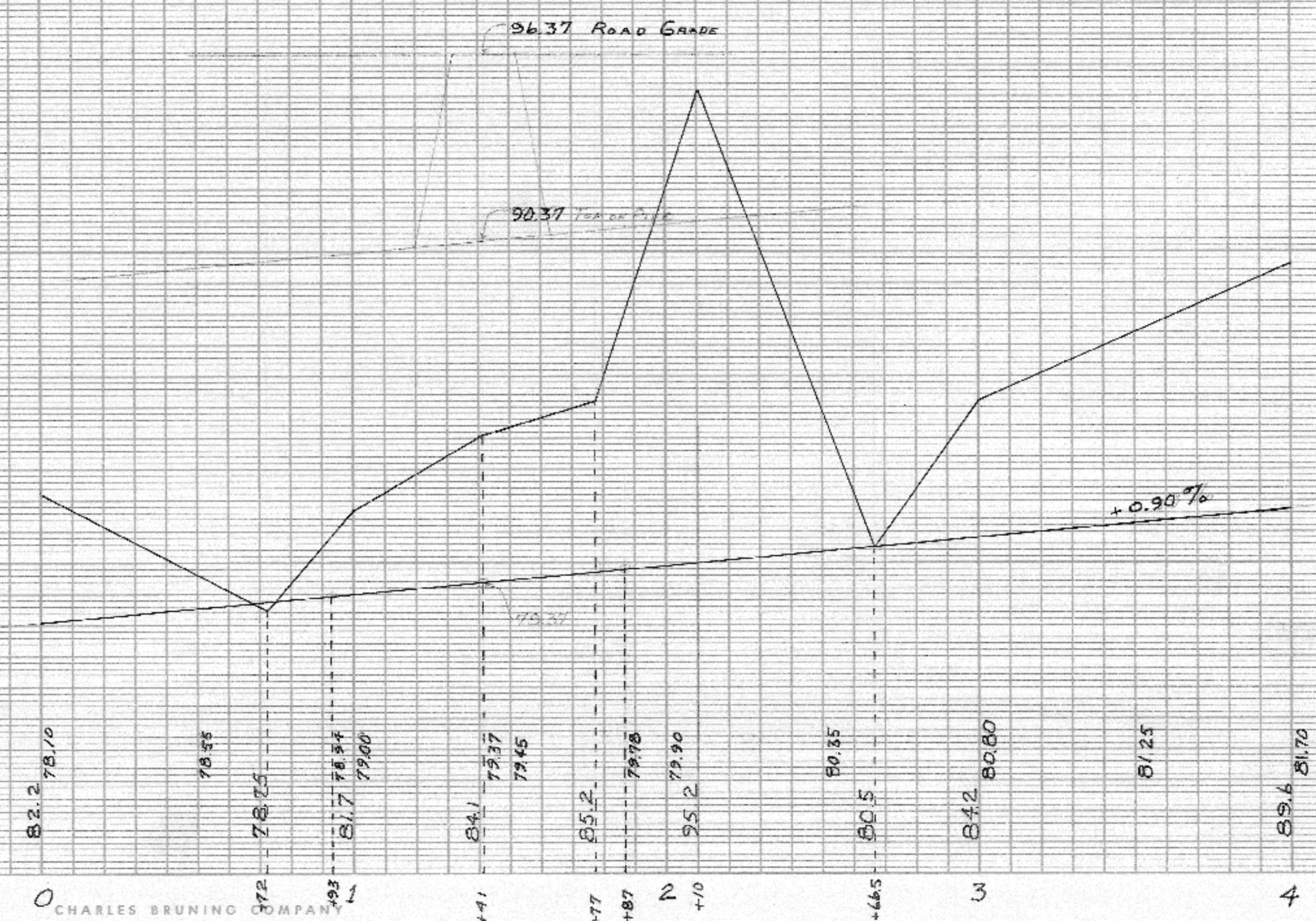


Scale 1:40

100

90

80



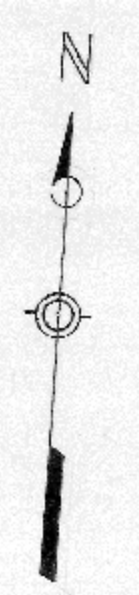
CHARLES BRUNING COMPANY  
PROFILE PLATE A  
PRINTED IN U.S.A.

CHARLES BRUNING COMPANY  
PROFILE PLATE A  
PRINTED IN U.S.A.

#609



12-8-65

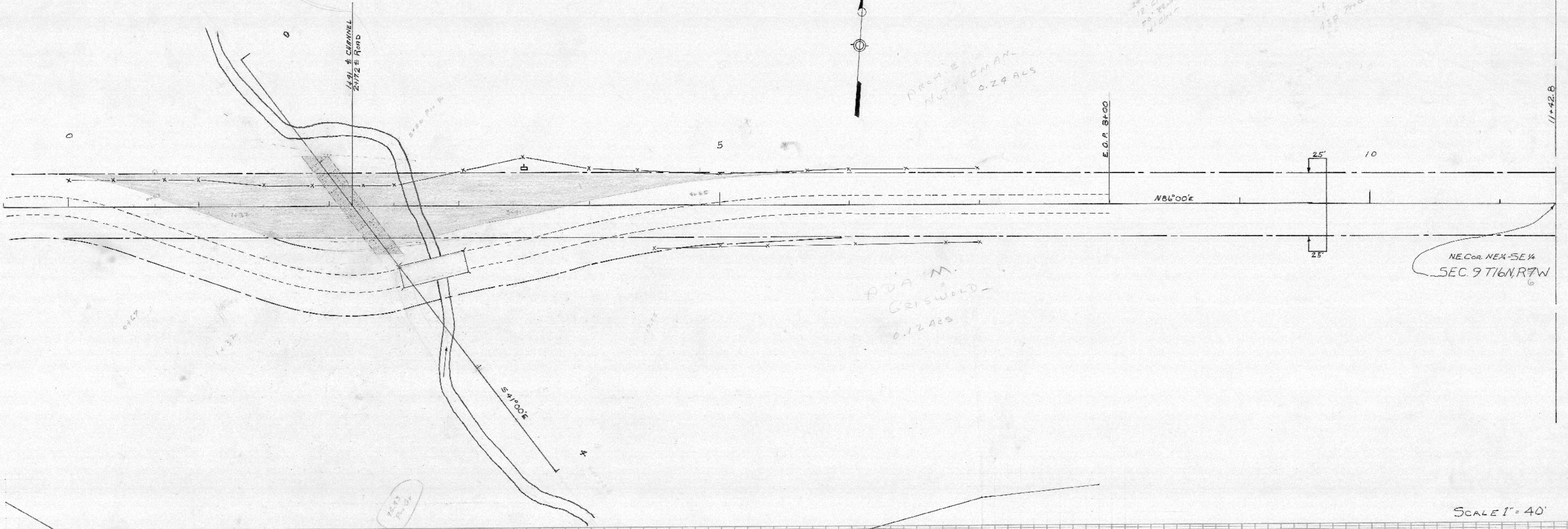


ARCHIE NUTTLEMAN  
0.29 ACS

34' 36" Width  
12' Clear Zone  
PA: 75.00  
14' Clear

451  
7100  
452 2nd

10-2-65



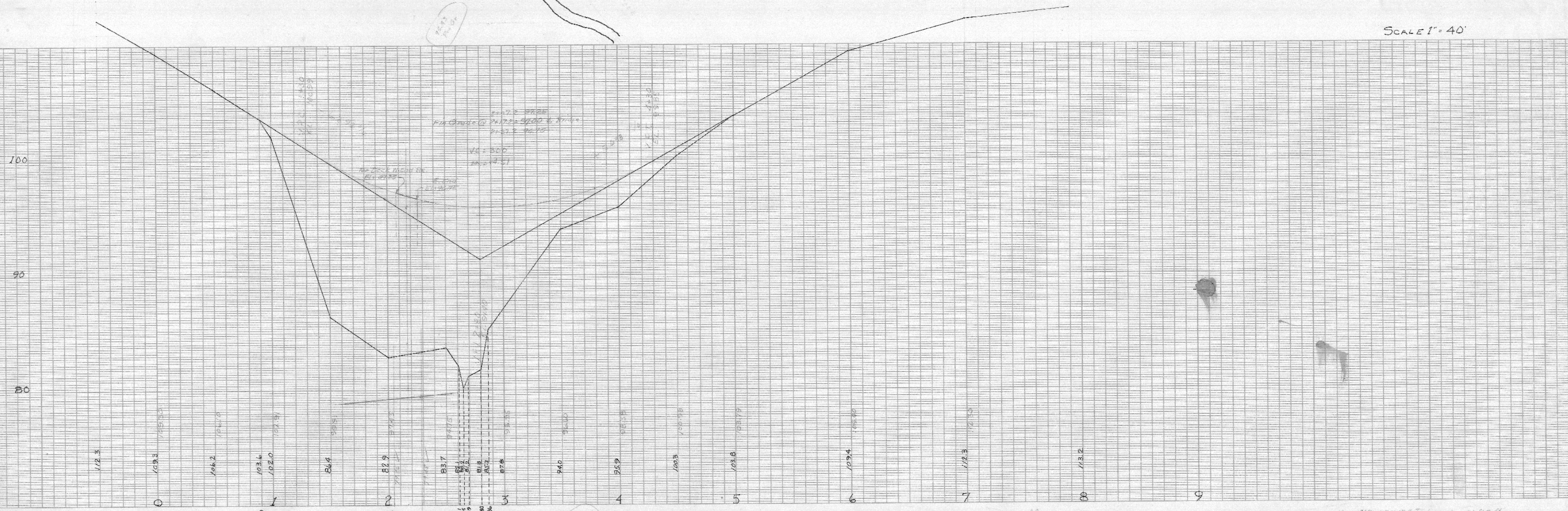
NE. Cor. NEX-SE 1/4  
SEC. 9 T16N, R7W

ADA M.  
GRISWOLD  
0.12 ACS

SCALE 1" = 40'

12-8-65

LINE BK 124  
PROFILE BR # G-111



112.3  
103.7  
106.2  
103.6  
102.0  
86.4  
82.9  
83.7  
87.8  
84.0  
75.9  
100.3  
103.8  
109.4  
112.3  
113.2

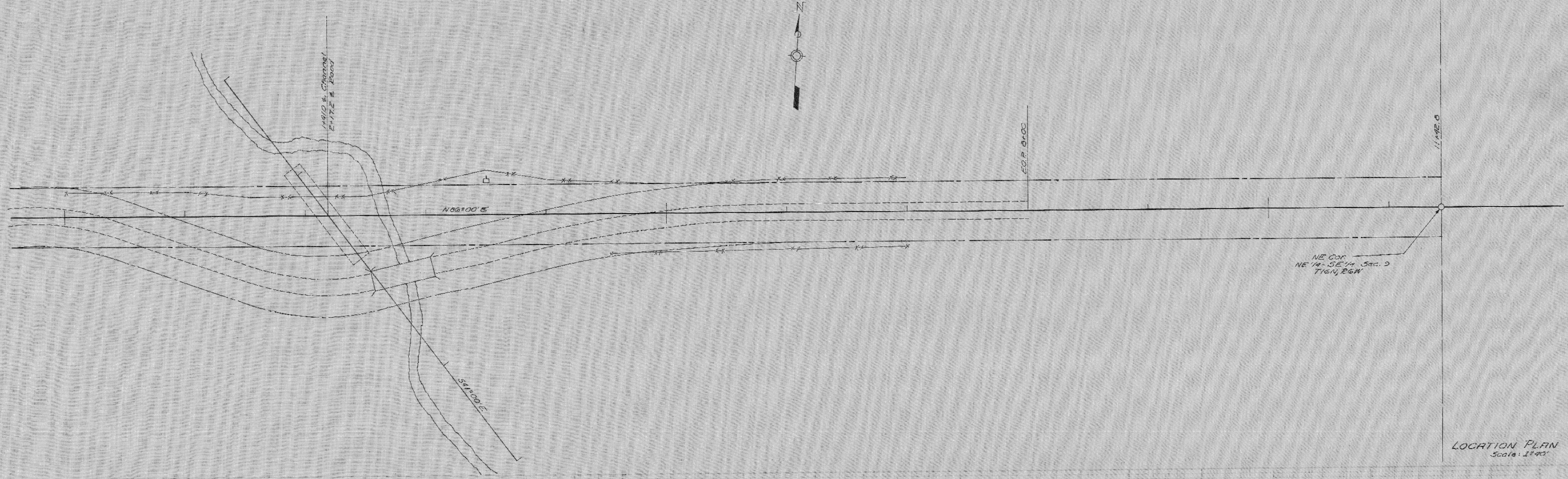
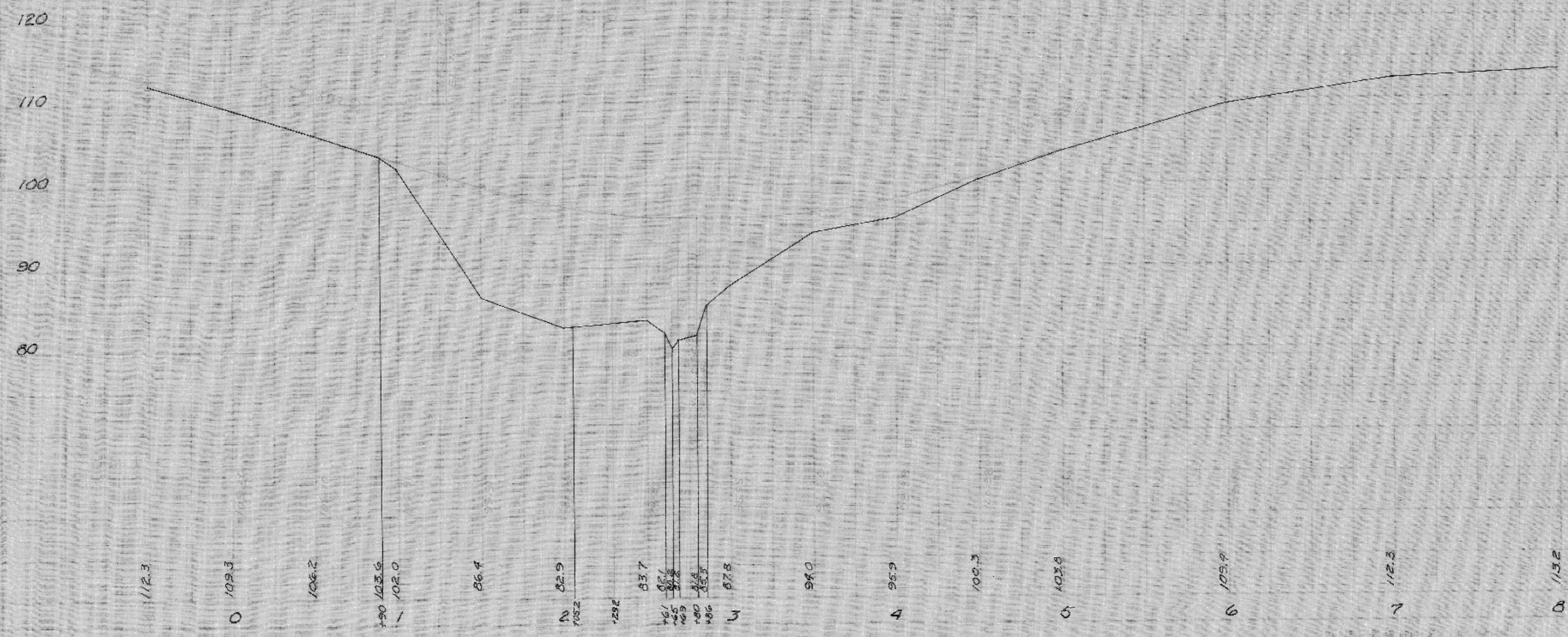
CHARLES BRUNING COMPANY  
PROFILE PLATE A  
PRINTED IN U.S.A.

PLEASANT VALLEY ROAD TOWN HAMILTON

CHARLES BRUNING COMPANY  
PROFILE PLATE A  
PRINTED IN U.S.A.

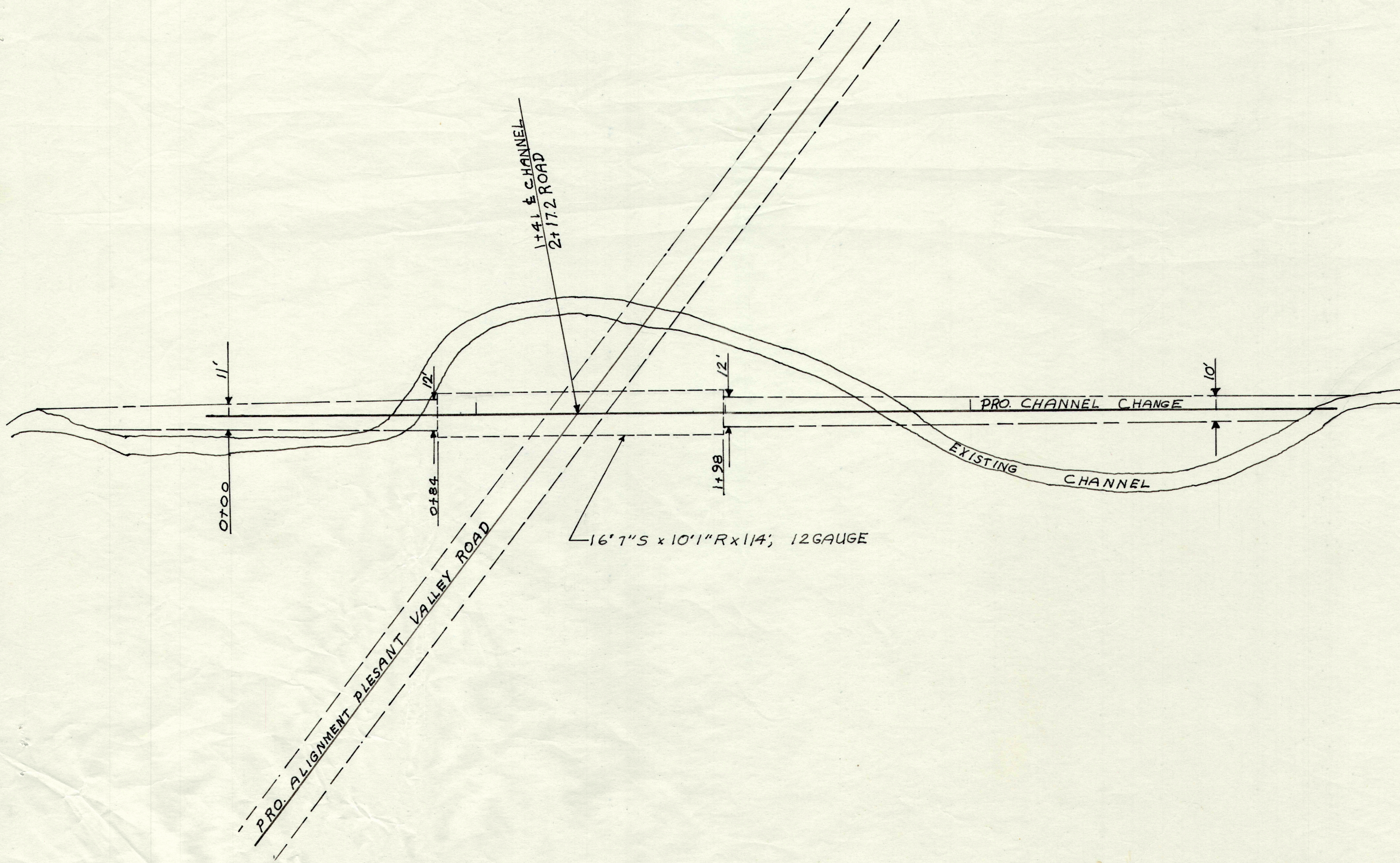
10 - 3/8" x 12" I-beams 21.8 ft.  
3/4" x 3/8" x 12" channels 30 ft.





LOCATION PLAN  
Scale: 1"=40'





PLESANT VALLEY  
PRO. CHANNEL CHANGE

