

7-16-45
7-27-45
E.N.D.
D.C.

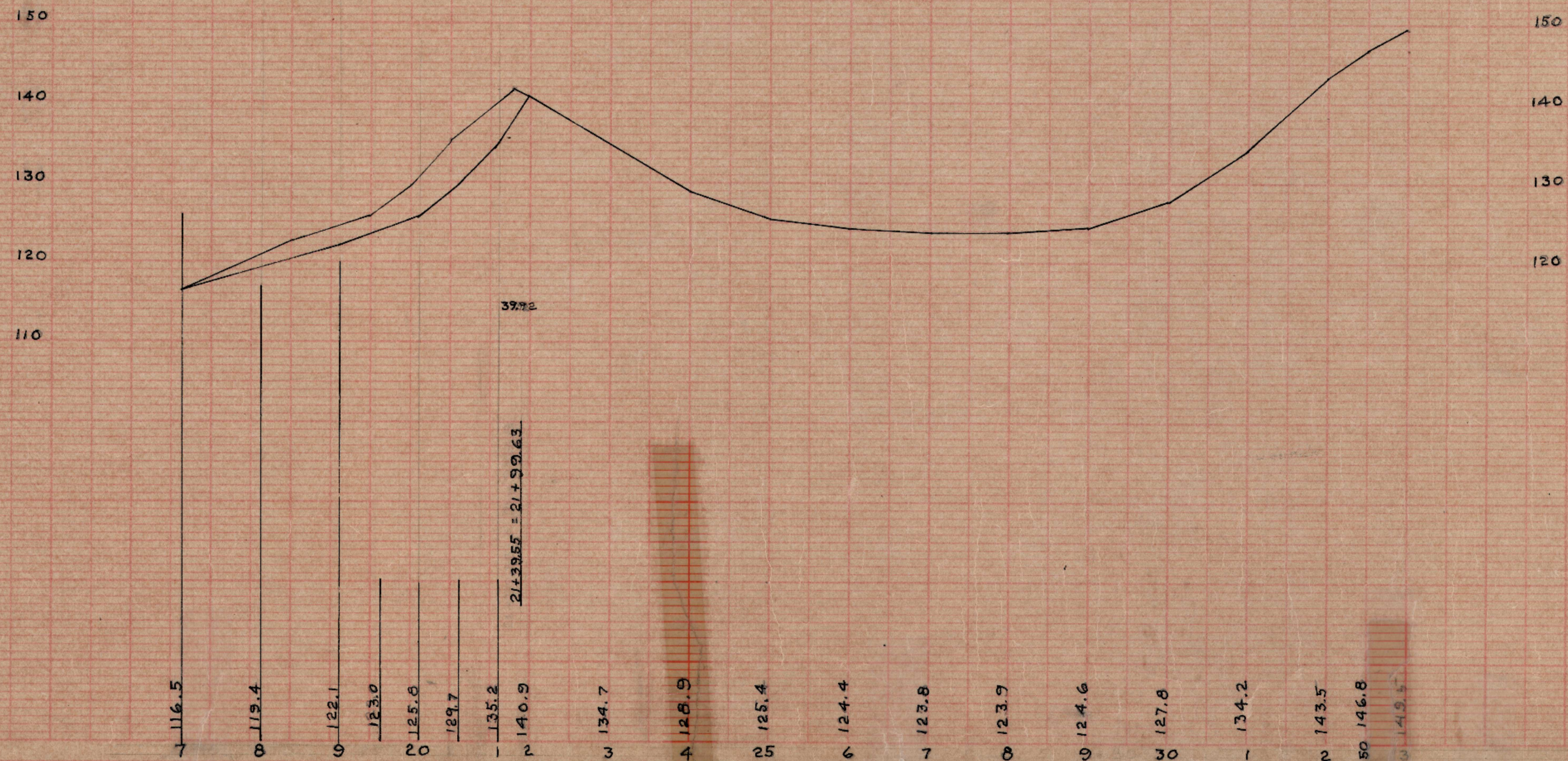
127

1-19-45
7-21-45
E.N.D.
D.C.

127

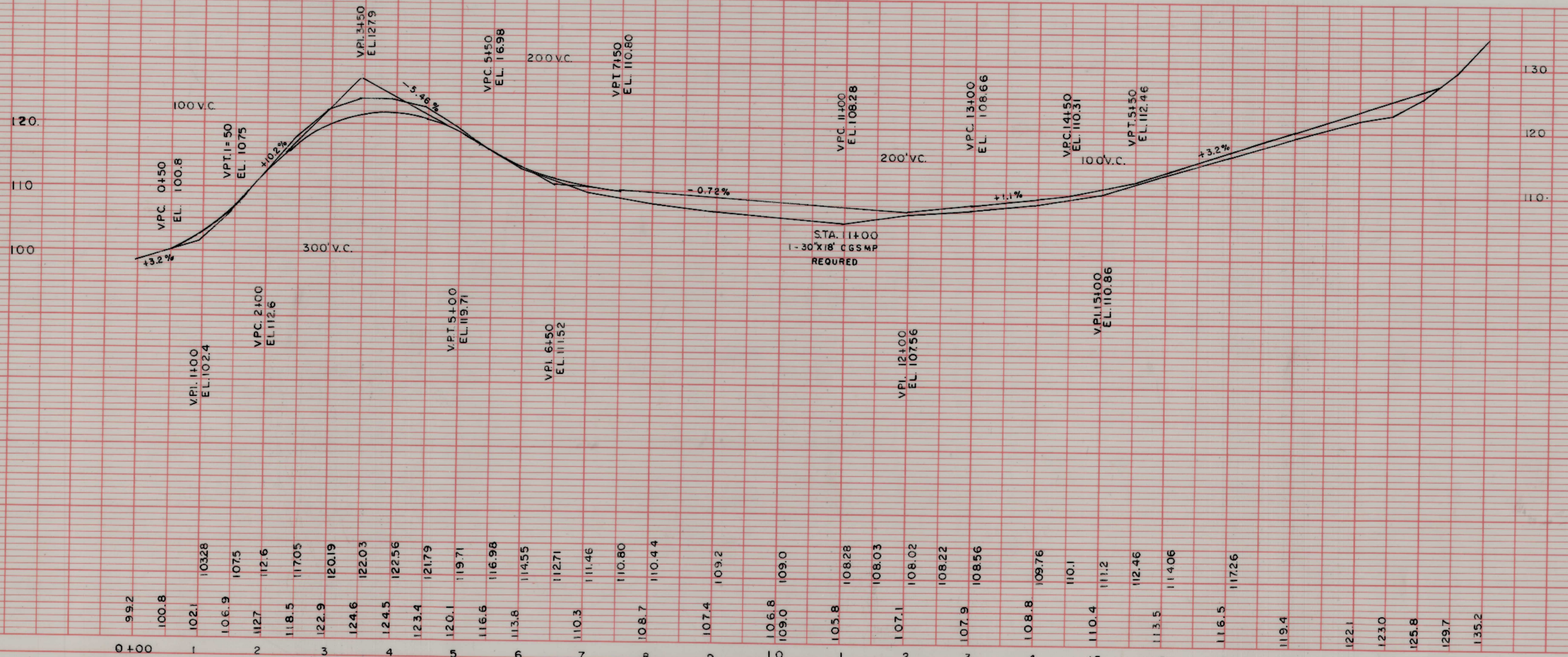
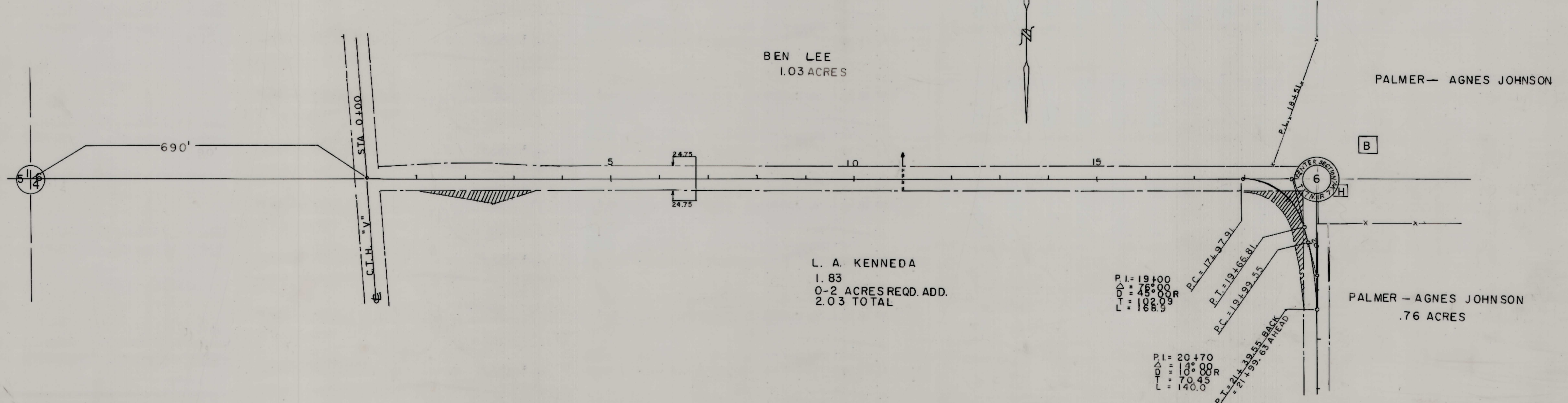


PI: 19+00
 Δ: 76° 00' R
 DT: 45° 00' R
 LT: 102.09'
 L: 168.9'
 PI: 20+70
 Δ: 14° 00' R
 DT: 10° 00' R
 LT: 70.45'
 L: 140.0'



PLAN
 SURVEYED BY: F.N.D. 7-18-45
 D.C. 9-83
 H.S.
 NOTE BOOK NO. 127
 STRUCTURE INSTANTIONS CHECKED

PROFILE
 SURVEYED BY: F.N.D. 7-19-45
 D.C. 7-21-45
 H.S.
 NOTE BOOK NO. 127
 STRUCTURE INSTANTIONS CHECKED



PLAN
 SURVEYED BY: F.N.D. 7-18-45
 PLOTTED BY: D.C. 7-27-45
 NOTE BOOK: ALIGNMENT CHECKED
 No. 127 REDRAWN BY H.S. 9-83

PROFILE
 SURVEYED BY: F.N.D. 7-18-45
 PLOTTED BY: D.C. 7-27-45
 NOTE BOOK: GRADES CHECKED
 No. 127 ELEVATION NOTATIONS CHECKED

