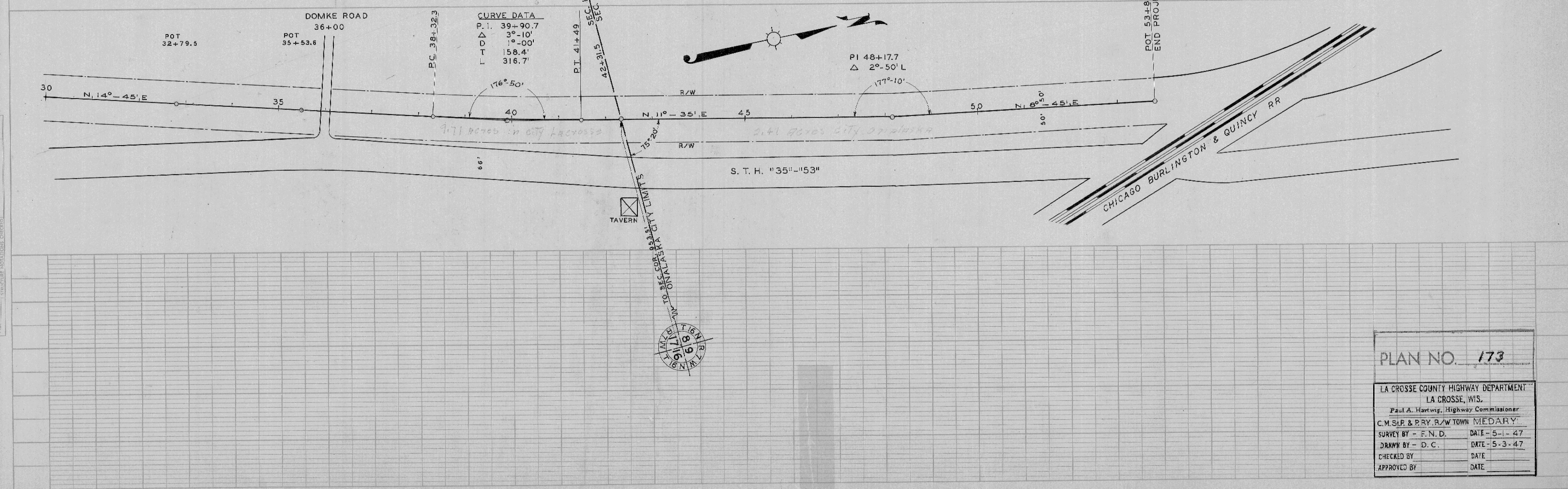
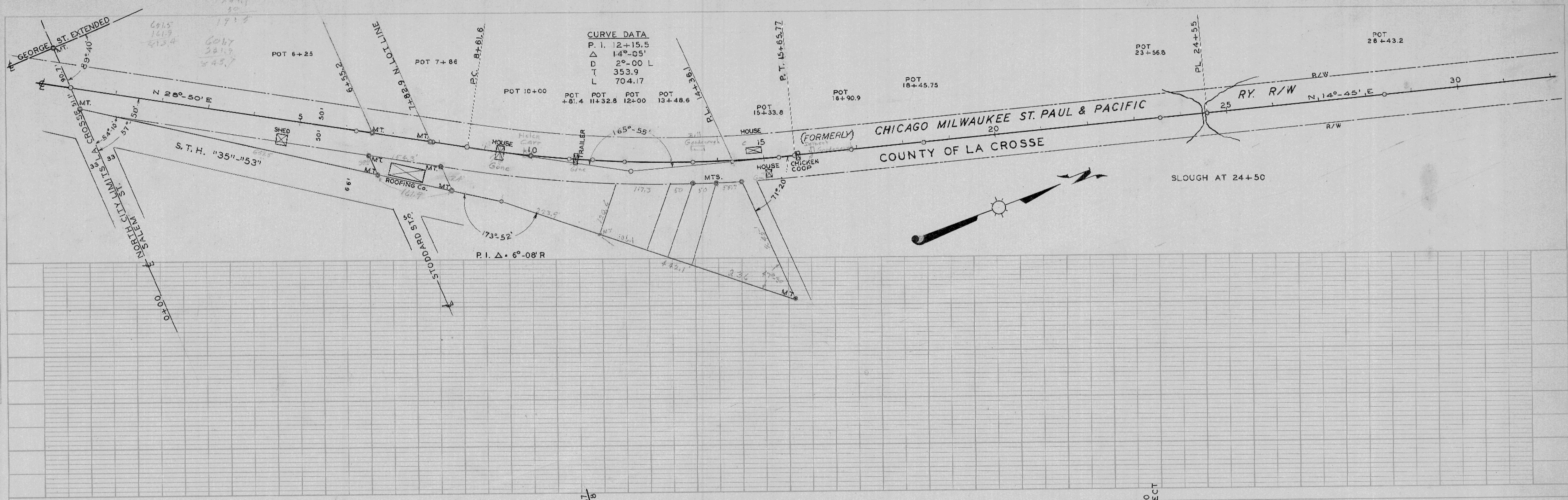


PLAN  
 DATE 5-1-47  
 BY F.N.D.  
 CHECKED D.C.  
 NO. 195

PROFILE  
 DATE  
 BY  
 CHECKED  
 NO.



PLAN NO. 173  
 LA CROSSE COUNTY HIGHWAY DEPARTMENT  
 LA CROSSE, WIS.  
 Paul A. Hartwig, Highway Commissioner  
 C.M.S.P. & P.R.Y. R/W TOWN MEDARY  
 SURVEY BY - F.N.D. DATE - 5-1-47  
 DRAWN BY - D.C. DATE - 5-3-47  
 CHECKED BY DATE  
 APPROVED BY DATE