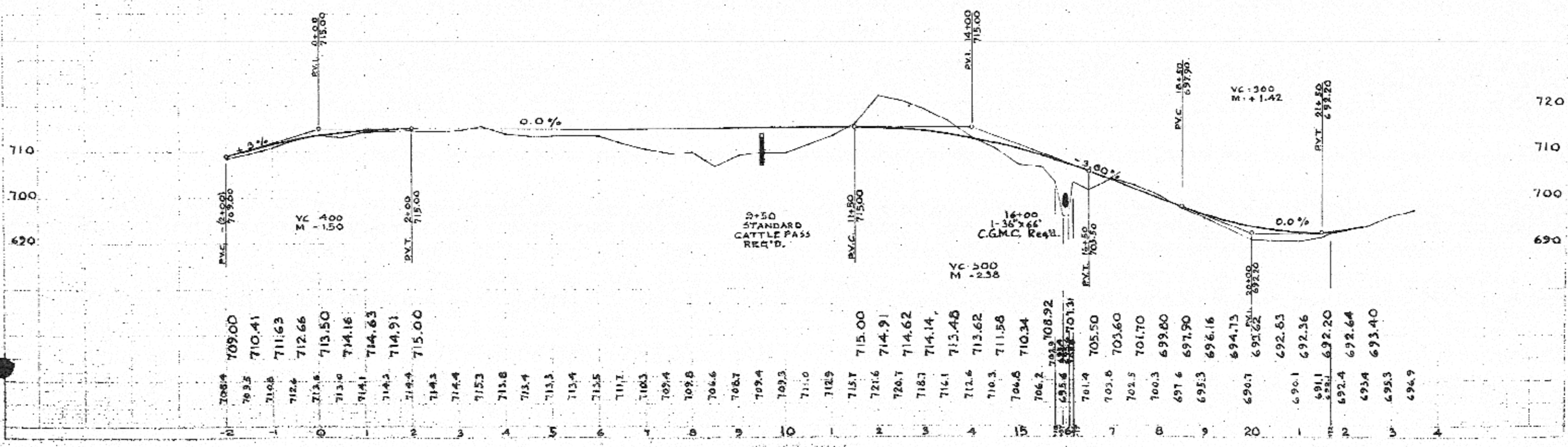
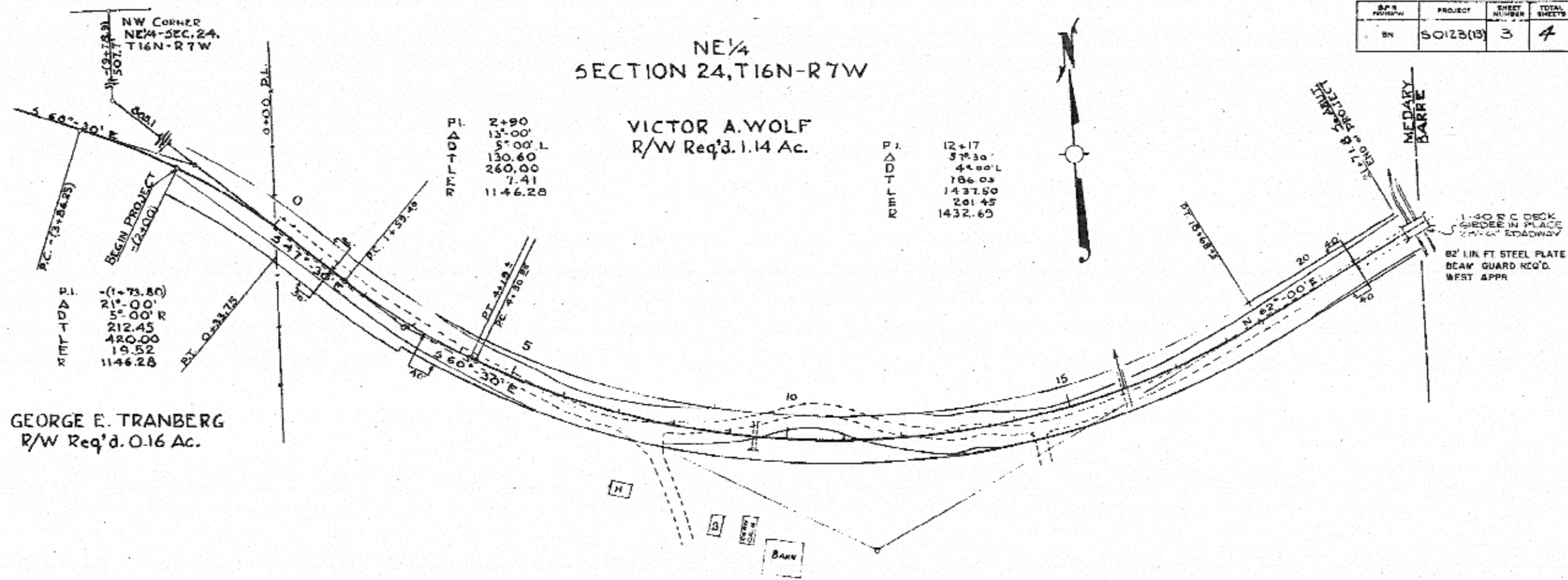


SHEET NUMBER	PROJECT	SHEET NUMBER	TOTAL SHEETS
3	50123(3)	3	4

NE 1/4
SECTION 24, T16N-R7W

VICTOR A. WOLF
R/W Req'd. 1.14 Ac.

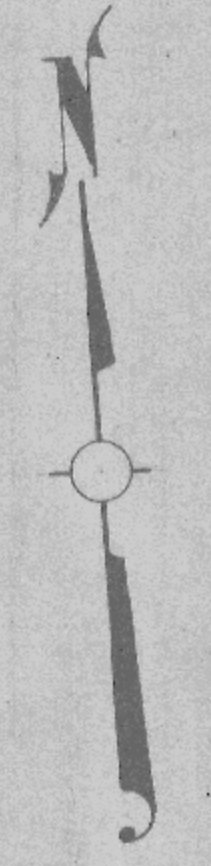
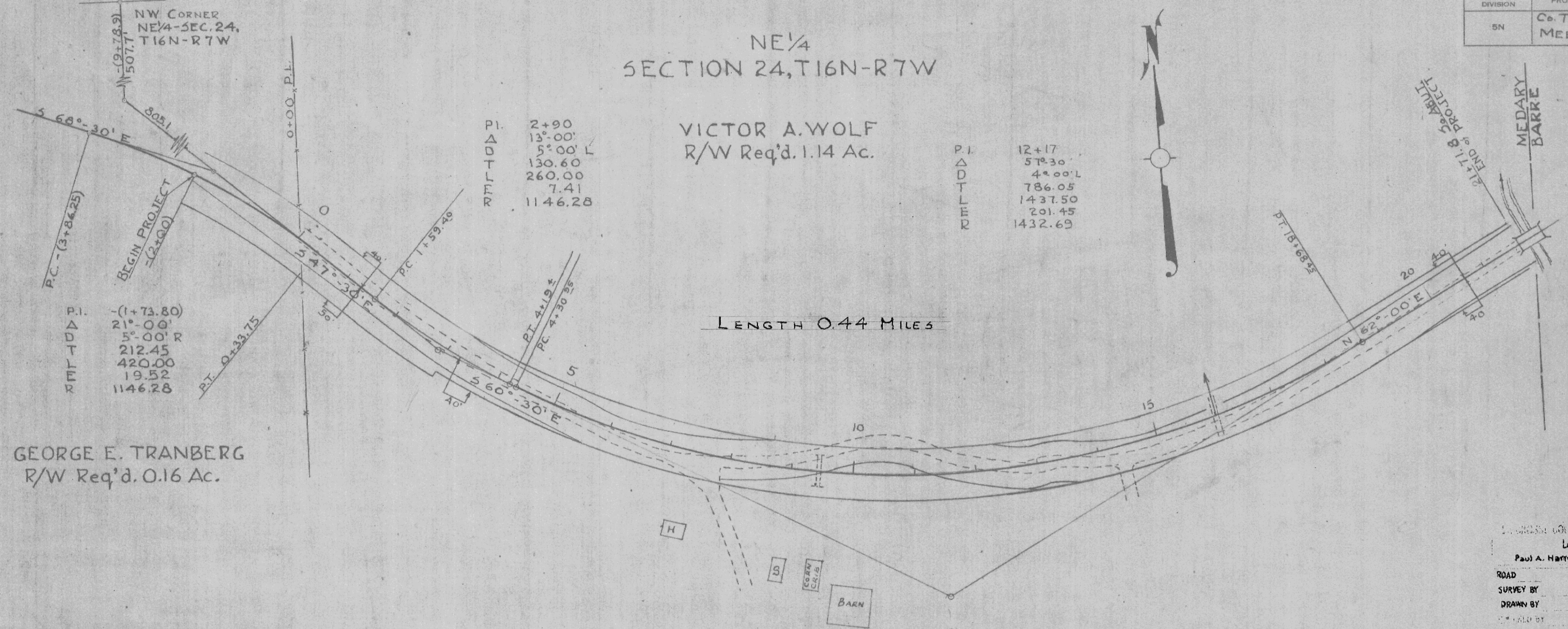
GEORGE E. TRANBERG
R/W Req'd. 0.16 Ac.



B.P.R. DIVISION	PROJECT	SHEET NUMBER	TOTAL SHEETS
5N	Co. Tr. B MEDARY	1	1

NE 1/4
SECTION 24, T16N-R7W

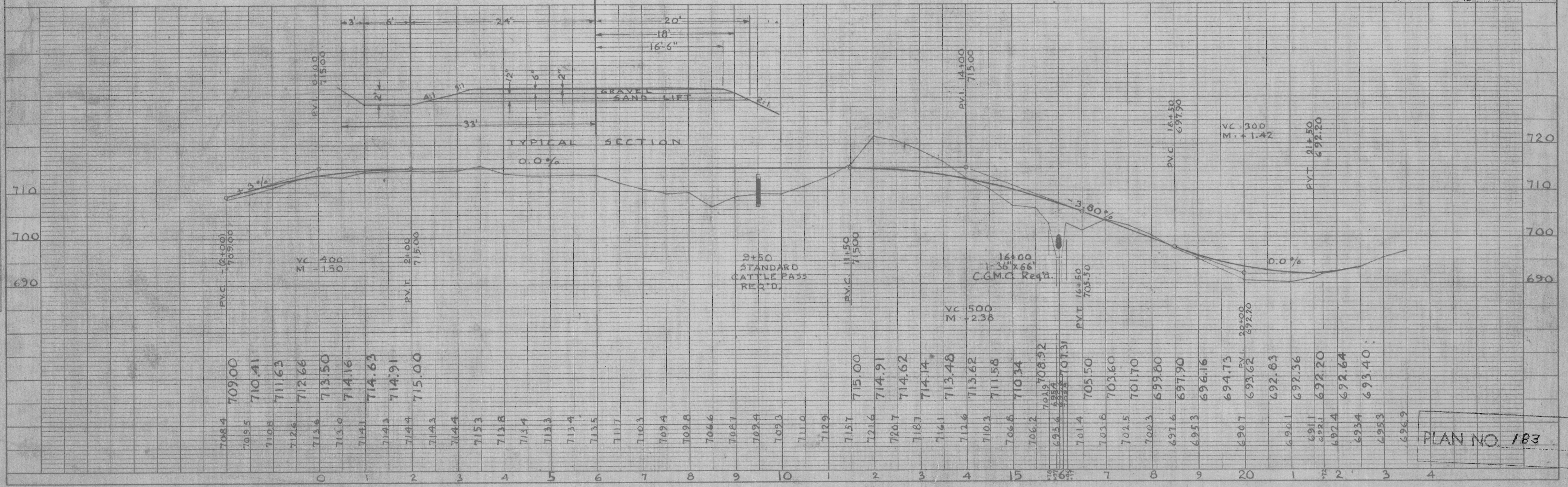
VICTOR A. WOLF
R/W Req'd. 1.14 Ac.



PLAN
DATE: 3-22-58
BY: U.S. MEDARY
SUPERVISOR: U.S. MEDARY
NOTE BOOK: ALIGNMENT CHECKED
NO. 183

LA CROSSE COUNTY
LA CROSSE WIS
Paul A. Harwig, Highway Commissioner
ROAD: TOWN:
SURVEY BY: DATE: 2-11-58
DRAWN BY: DATE:
CHECKED BY: DATE:
REMOVED BY: DATE:

PROFILE
DATE:
BY:
INVESTOR:
NOTE BOOK: GRADES CHECKED
NO. 183
STRUCTURE NOTATION (S/N):



PLAN NO. 183