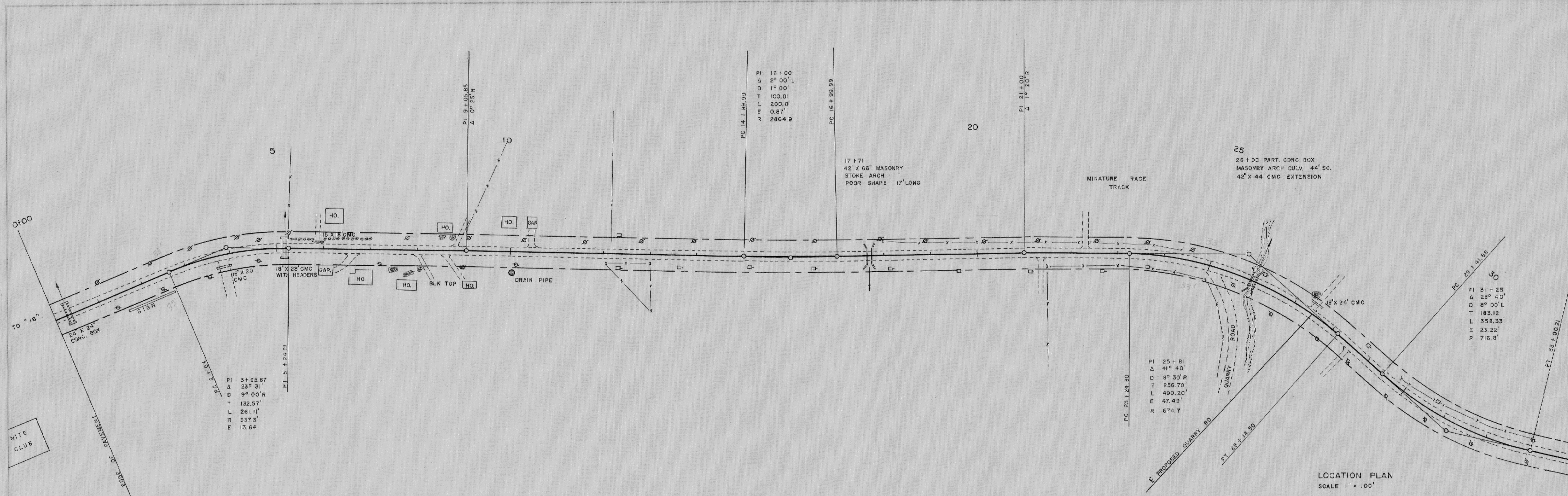
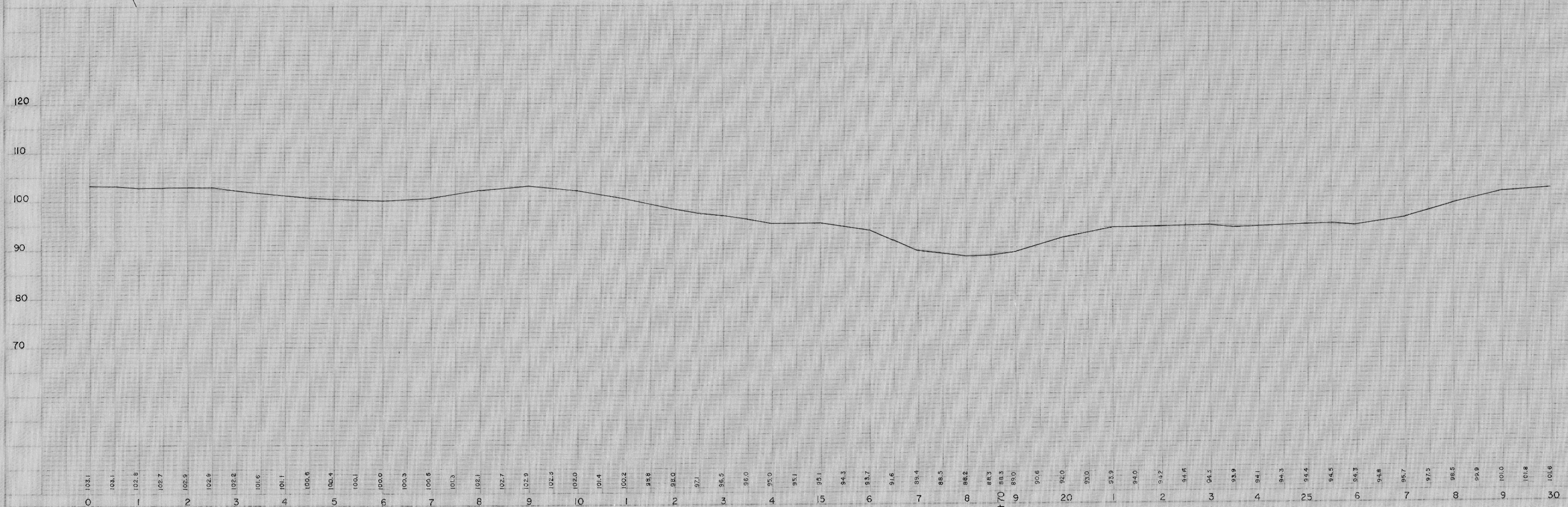


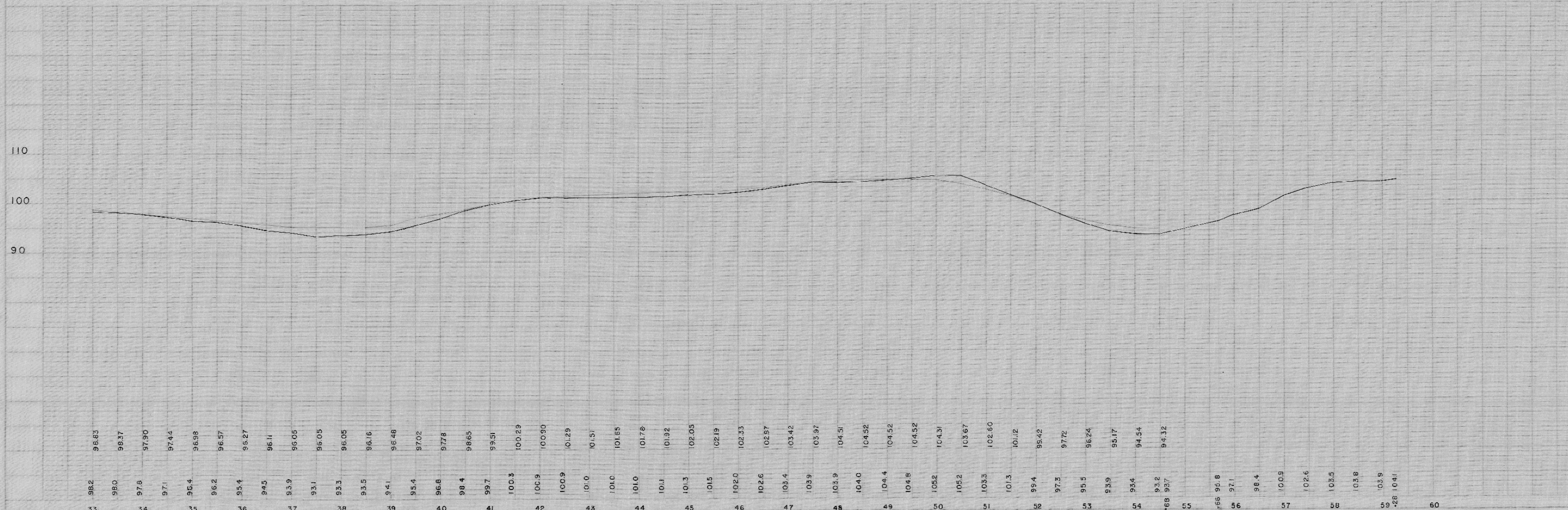
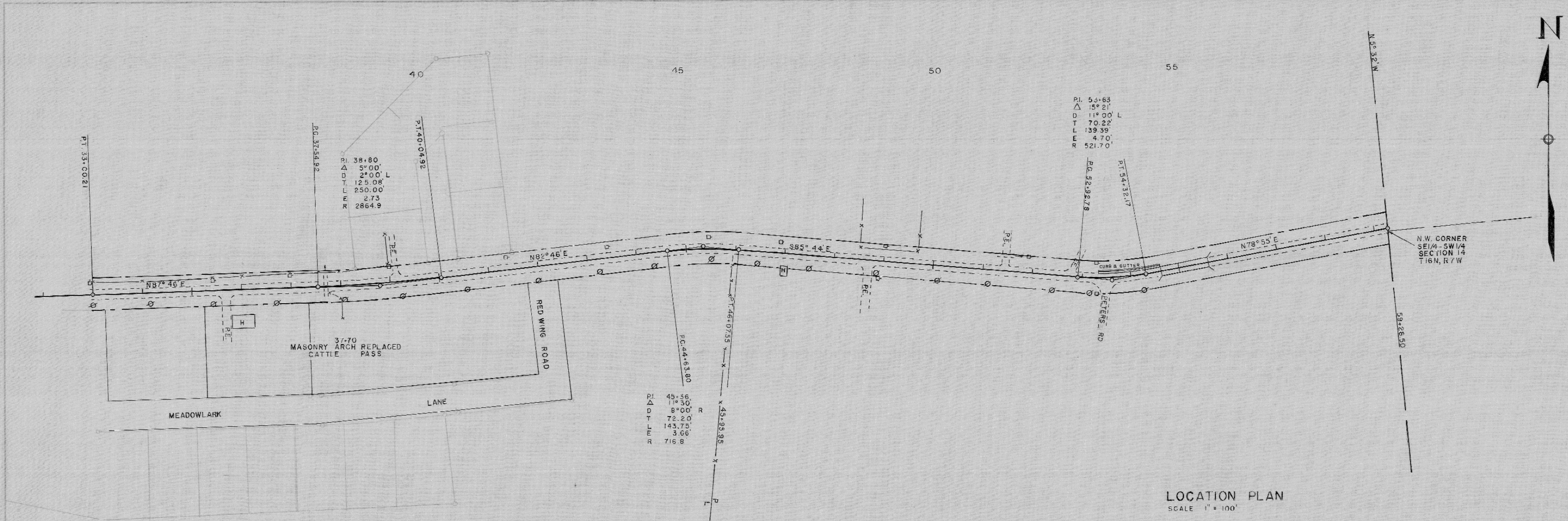
MURPHY
P.M.U.
5-3-60
5-2-70
186



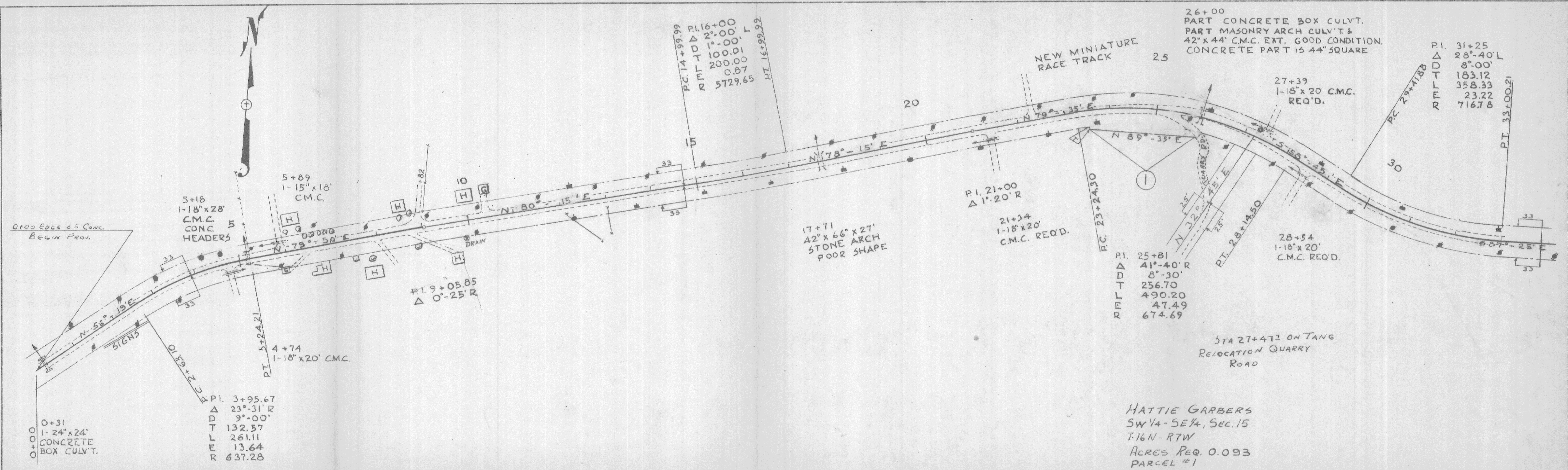
LOCATION PLAN
SCALE 1" = 100'



CTH "B" TOWN OF MEDARY SHEET 1 OF 2 PLAN 186

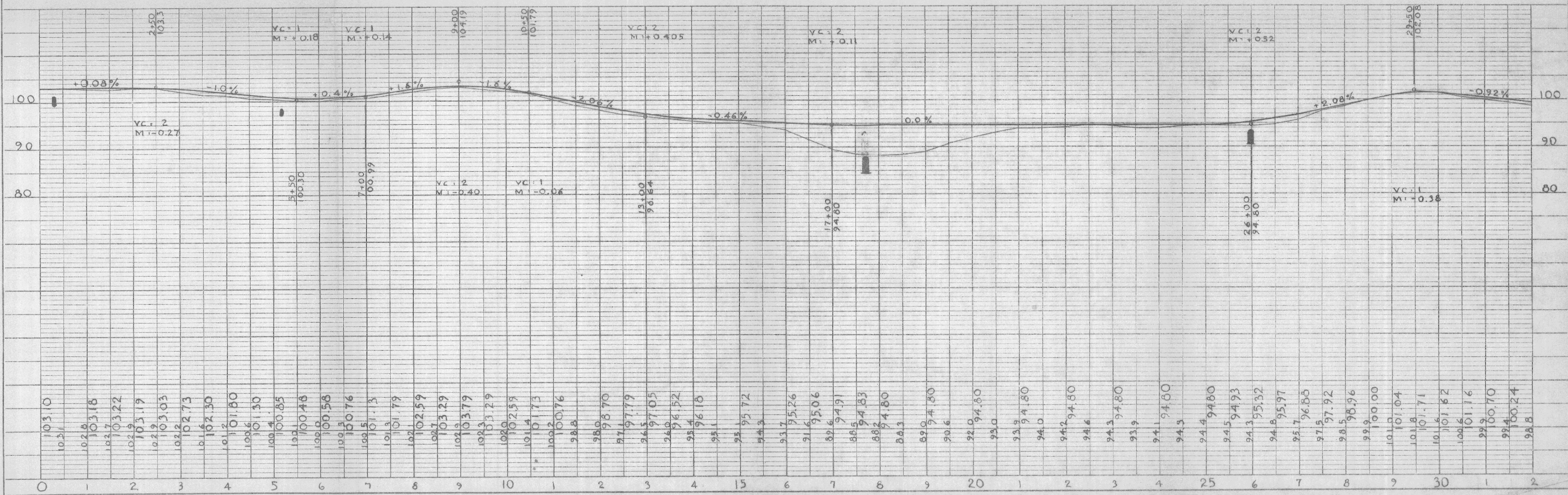


DATE 5/17/60
 BY J.M.D.C.
 SUPERVISOR
 PLANNING
 NOTE BOOK NO. 156



HATTIE GARBERS
 SW 1/4 - SE 1/4, Sec. 15
 T. 16N - R. 7W
 ACRES REQ. 0.093
 PARCEL #1

DATE 5/17/60
 BY J.M.D.C.
 SUPERVISOR
 PROFILE
 NOTE BOOK NO. 158



RECEIVED
 MAY 18 1960
 ENGINEERING

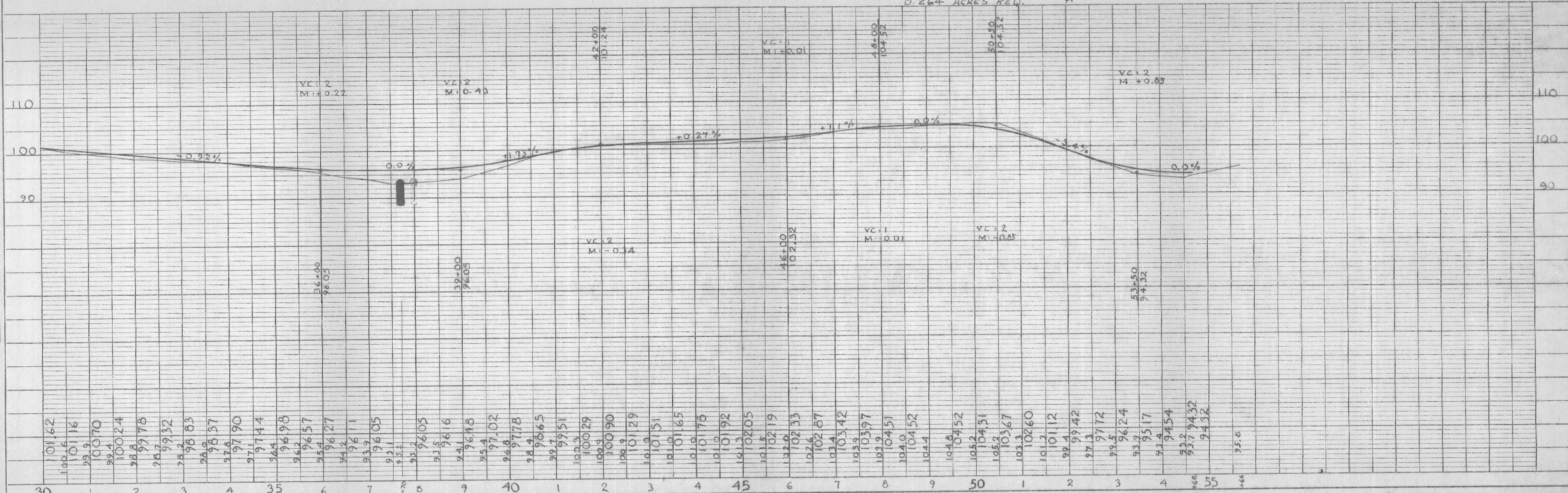
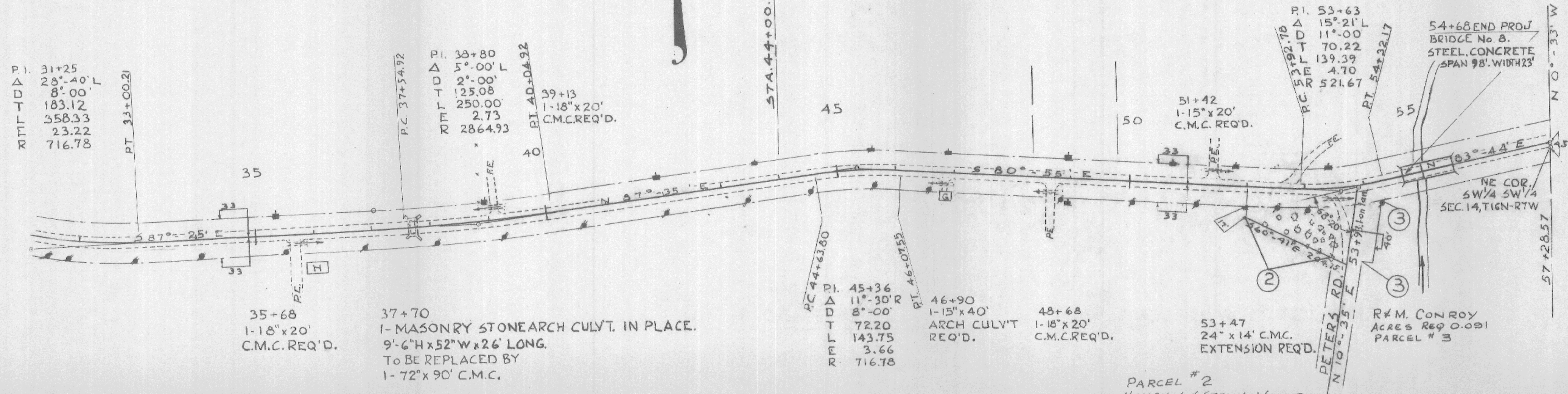
NE 1/4-SE 1/4
SEC. 15, T16N-R7W

NW 1/4-SW 1/4
SEC. 14, T16N-R7W



DATE: 5.9.60
BY: J.M.
SURVEYED, PLOTTED, ALIGNED, CHECKED, REVISIONS:
PLAN: NOTE BOOK NO. 188

DATE: 5.9.60
BY: J.M.
SURVEYED, GRADES CHECKED, G.M. S. NOTED, STRUCTURE DATUMS OK'D.
PROFILE: NOTE BOOK NO. 188



TOWN OF MEDARY

C.T.H. "B"

PLATE 1 - PLAN-PROFILE & P.R. STANDARD
THE FRANKFORD PAPER CO. CHICAGO

LA CROSSE COUNTY HIGHWAY DEPARTMENT

SHEET NO. 2 OF 2 SHEETS