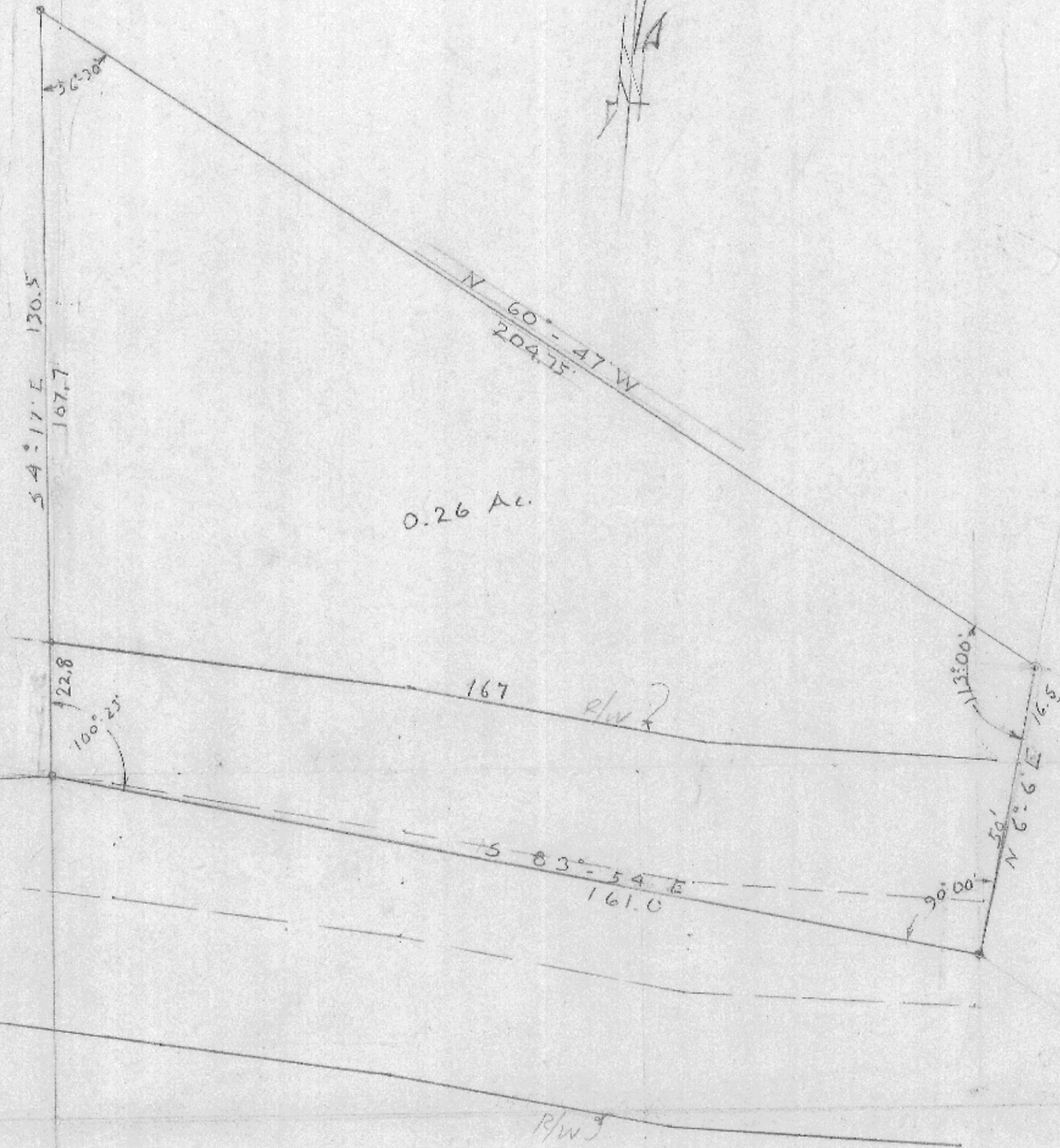


NE COR.  
 SW 1/4 SW 1/4  
 SEC. 19 T. 16 N. R. 7 W. S. 78°-58' W  
 575.0

NE COR.  
 SW 1/4 SW 1/4  
 SEC. 19 T. 16 N. R. 7 W.



PLAN NO. 187

LACROSSE COUNTY HIGHWAY DEPARTMENT	
PAUL A. HARTWIG	HIGHWAY COMMISSIONER
ROAD <u>PETERS</u>	TOWN <u>MEDARY</u>
SURVEYED BY <u>J.M.</u>	DATE <u>2-15-61</u>
FIELD BOOK <u>186</u>	
LEVEL BOOK	
DRAWN BY <u>D.C.</u>	DATE <u>2-17-61</u>
CHECKED BY	DATE
APPROVED BY	DATE