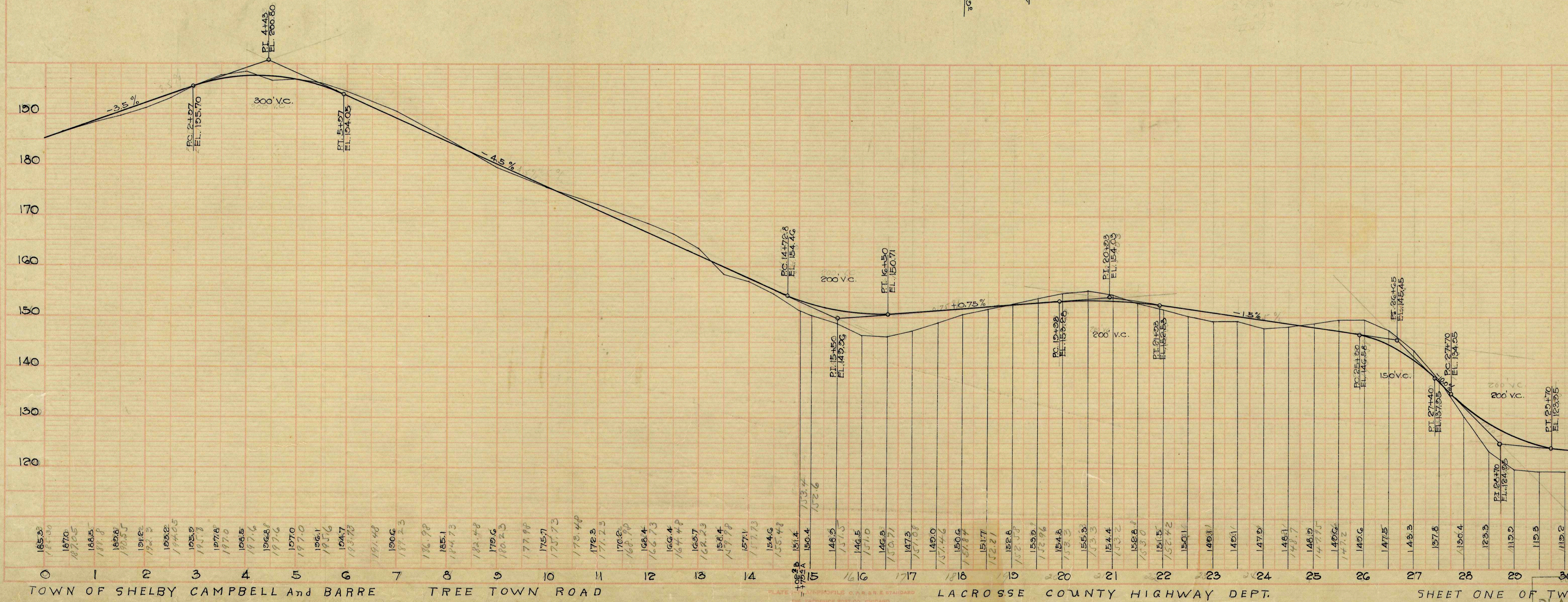
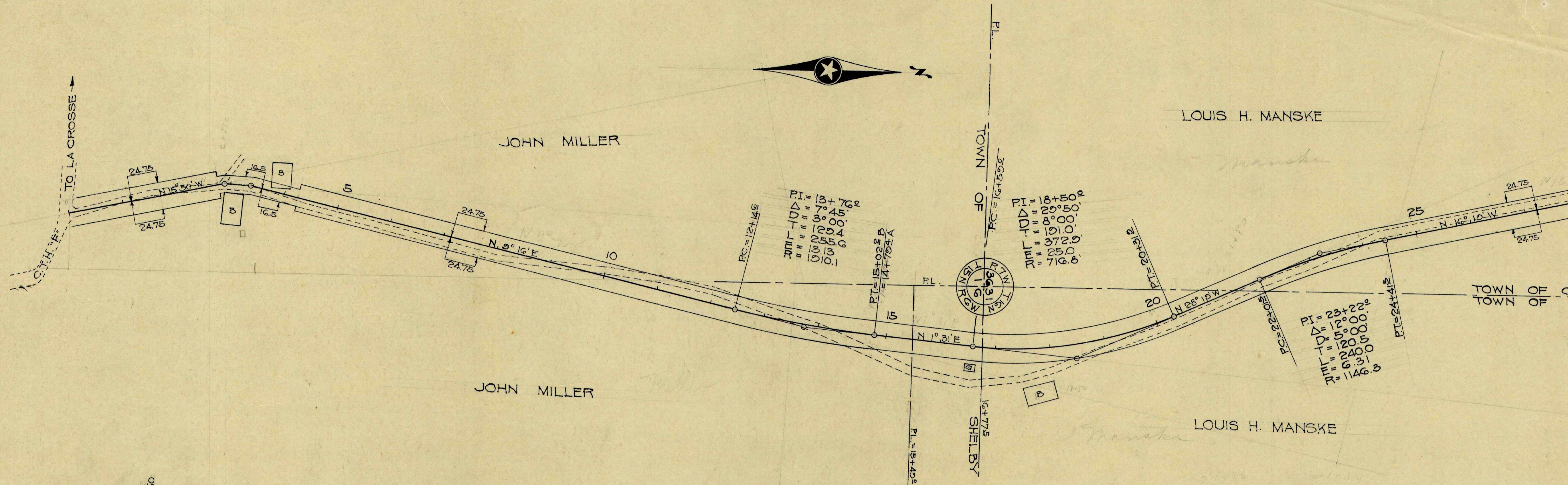


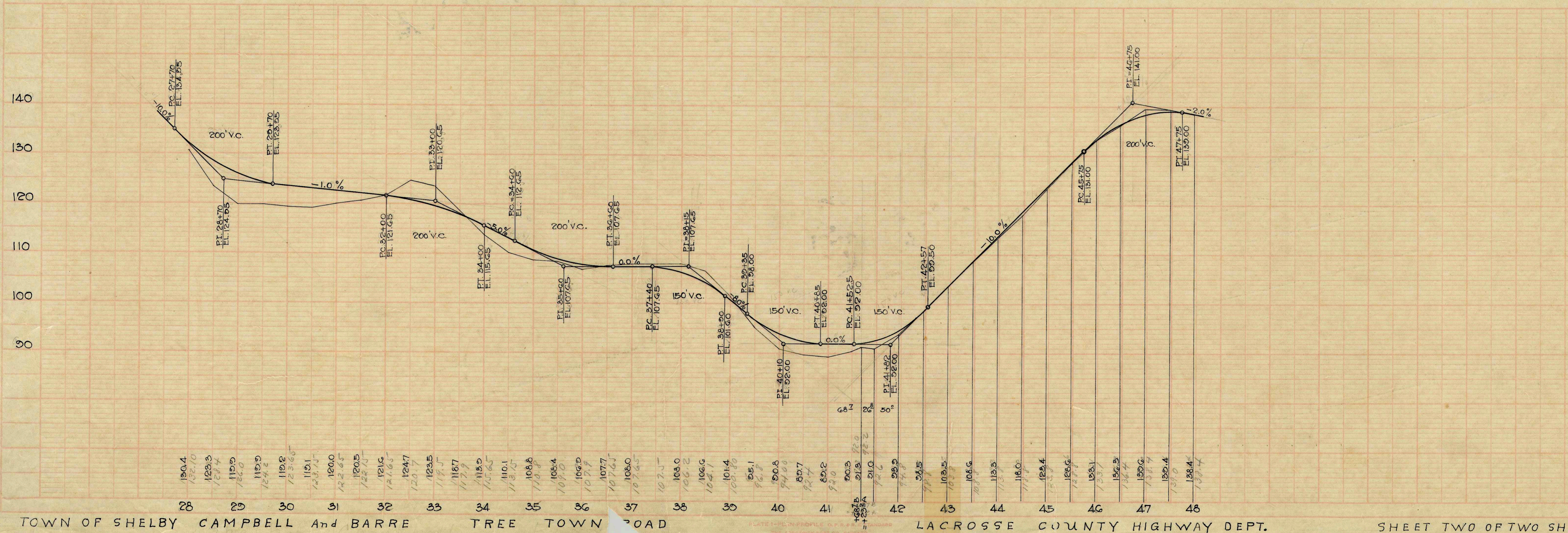
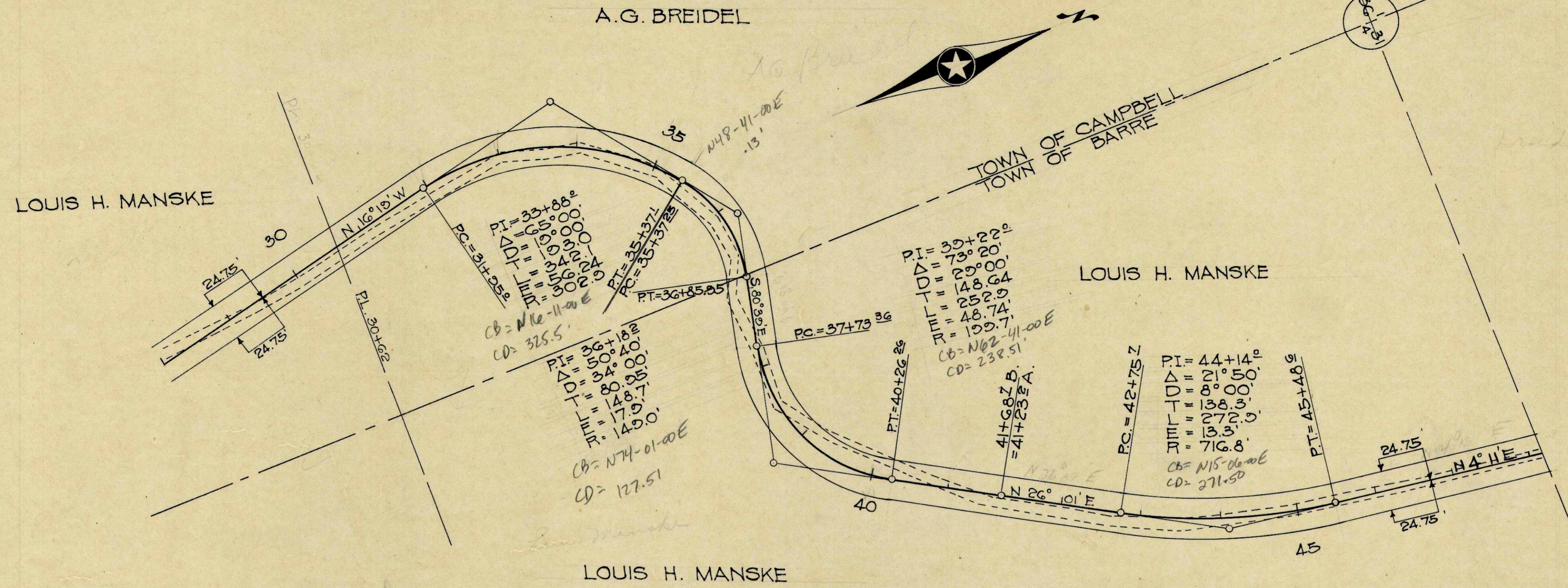
PLAN
 SHEET NO. 1
 DATE: 1/5/50
 DRAWN BY: [Signature]

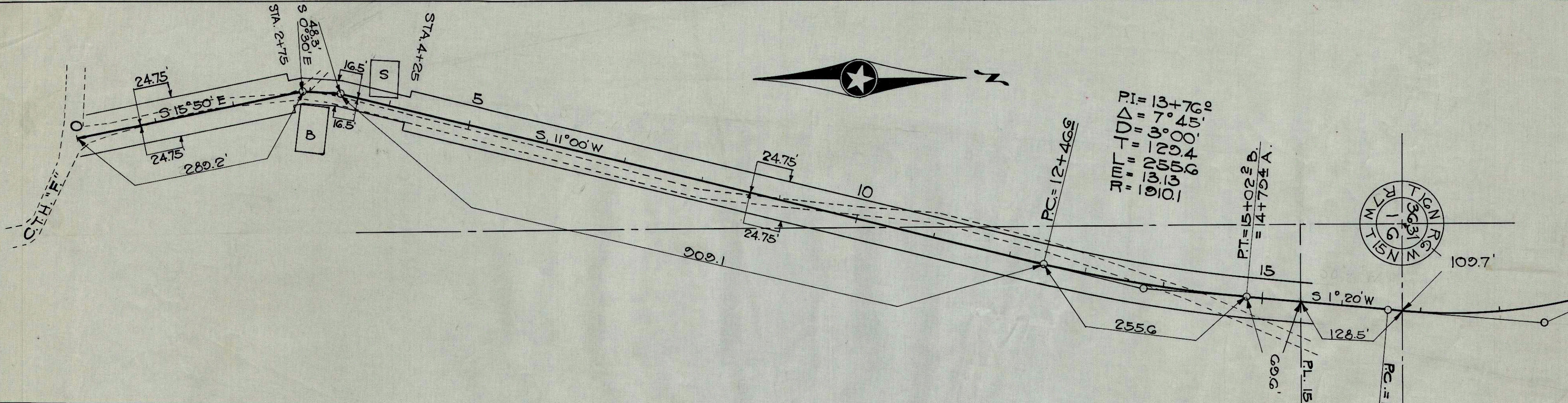
PROFILE
 SHEET NO. 1
 DATE: 1/5/50
 DRAWN BY: [Signature]



TITLE
 DATE
 DRAWN BY
 CHECKED BY
 APPROVED BY

TITLE
 DATE
 DRAWN BY
 CHECKED BY
 APPROVED BY





LA CROSSE COUNTY HIGHWAY DEPT.
 TOWN OF SHELBY
 THREE TOWN ROAD
 SURVEYED: AUG. 1940
 " BY: F.N.D.
 DRAWN: AUG. 1940
 " BY: L.J.M.
 SCALE: 1"=100' - NOTEBOOK NO. 15

JOHN MILLER
 R/W REQD. 1.16 AC.

NOTE: THE AREA INVOLVED IN THIS TRANSACTION IS THAT PORTION SHOWN BETWEEN THE R/W LINES, EXCEPT THE ONE ROD WIDTH NOW USED FOR HIGHWAY PURPOSES.