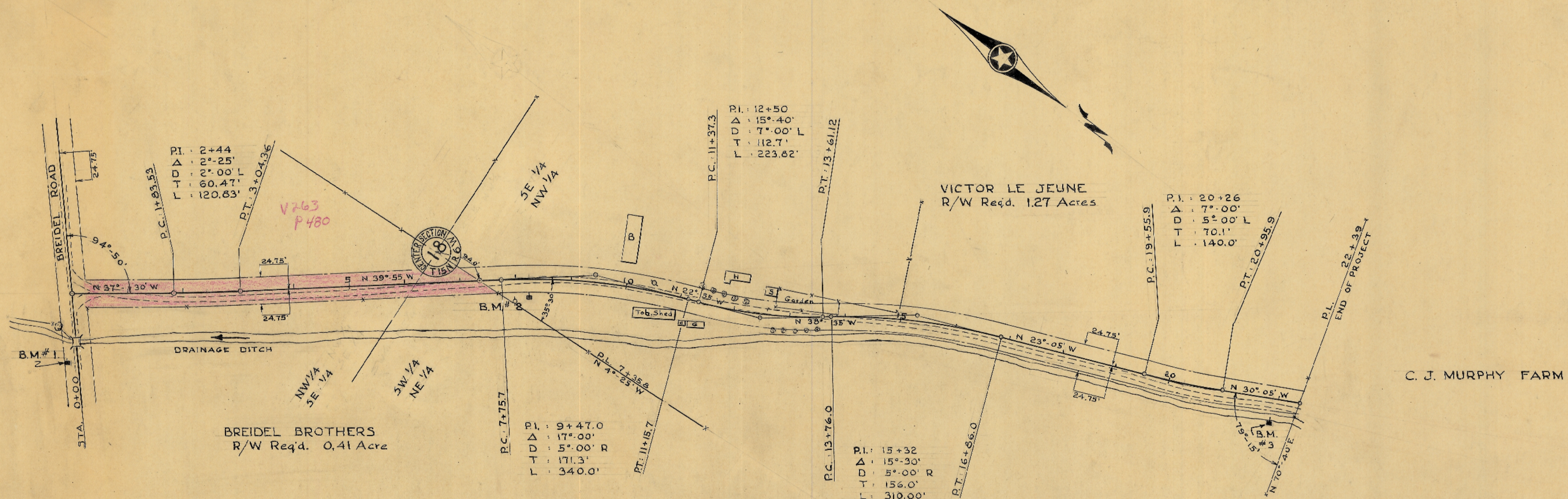


PLAN  
 4-29-46  
 F.N.D.  
 D.C.  
 160

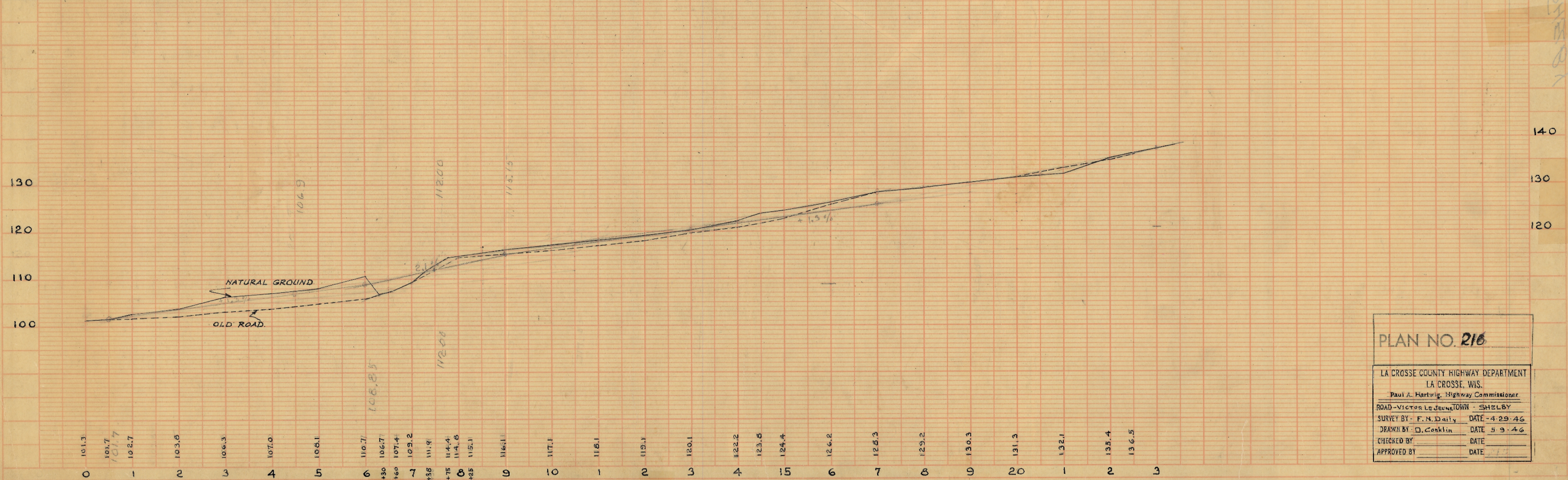
PROFILE  
 5-9-46  
 F.N.D.  
 D.C.  
 159



BENCH MARKS

No.	STA.	DESCRIPTION	ELEV.
1	0+00	SPK. P.P. # 11 125' Rt. E of Bridge	100.00
2	8+25	" P.P. 35' Rt.	114.43
3	21+90	6" Stump 40' Rt. E. side ditch	135.88

LENGTH 0.42 Mi.



**PLAN NO. 216**

LA CROSSE COUNTY HIGHWAY DEPARTMENT  
 LA CROSSE, WIS.  
 Paul A. Hartwig, Highway Commissioner

ROAD - VICTOR LE JEUNE TOWN - SHELBY  
 SURVEY BY - F.N. Daily DATE - 4-29-46  
 DRAWN BY - D. Conklin DATE 5-9-46  
 CHECKED BY \_\_\_\_\_ DATE \_\_\_\_\_  
 APPROVED BY \_\_\_\_\_ DATE \_\_\_\_\_