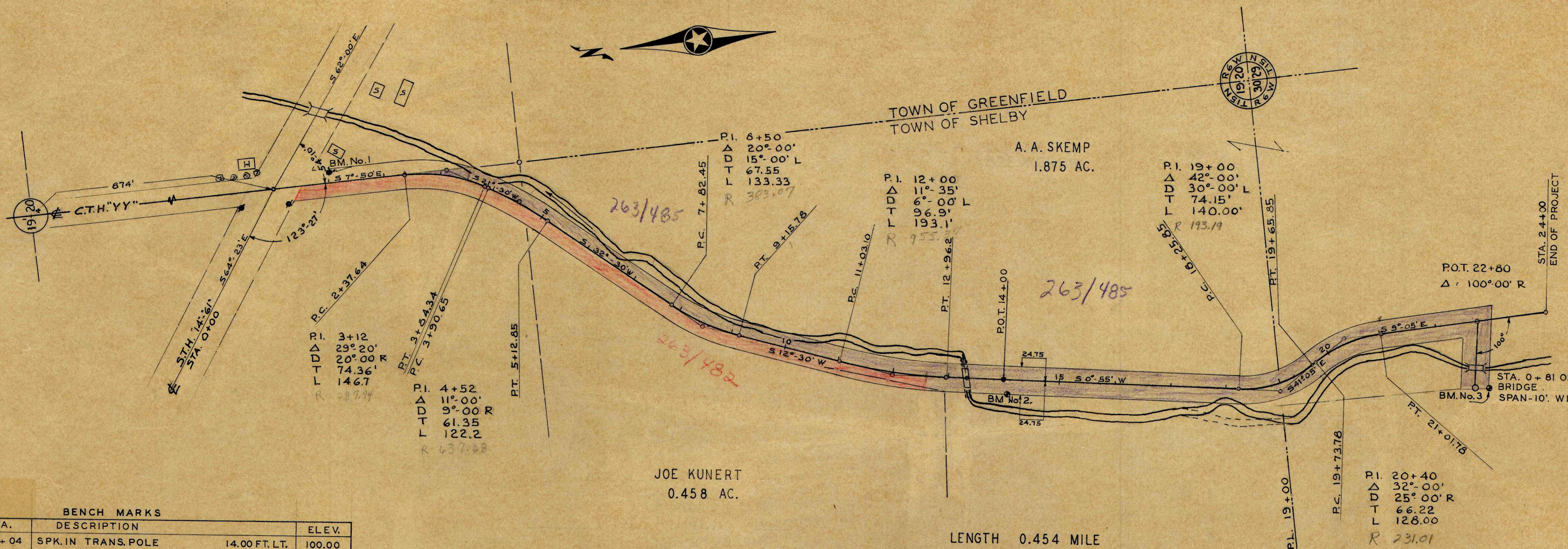


7-29-47
8-1-47

F.N.D.
D.C.

160

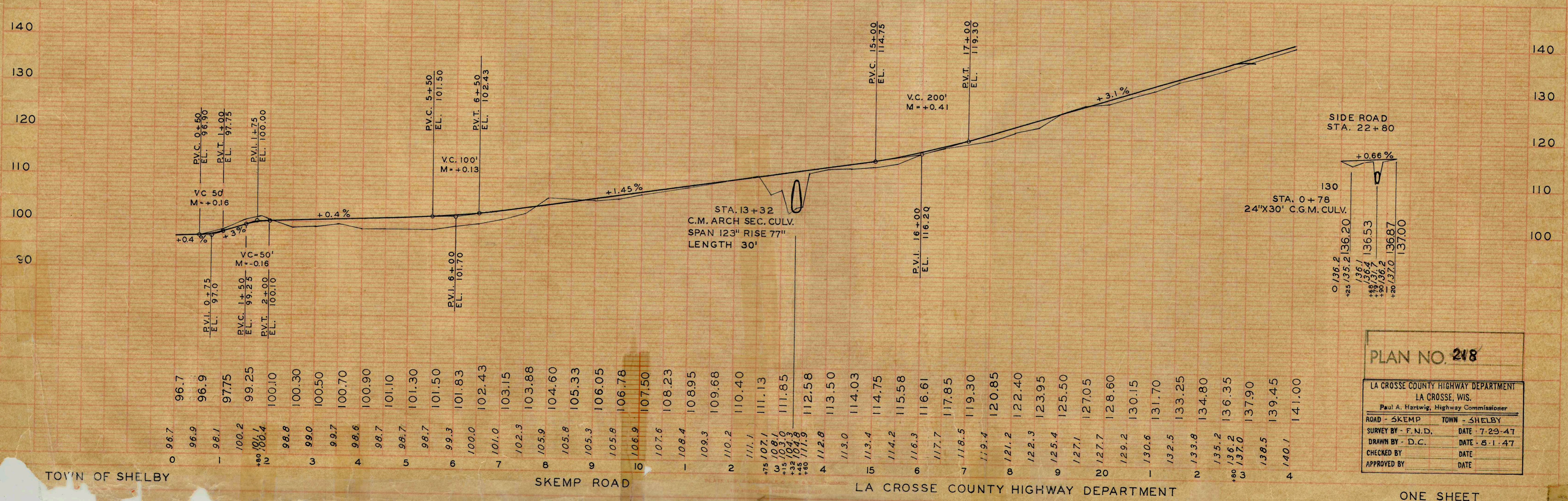


BENCH MARKS

No.	STA.	DESCRIPTION	ELEV.
1	1+04	SPK. IN TRANS. POLE	14.00 FT. LT.
2	14+10	SPK. IN TOP F. POST	25.00 FT. RT.
3	23+00	SPK. IN COR. F. POST W. OF CREEK	122.00 FT. RT.

LENGTH 0.454 MILE

ALL BEARINGS ARE MAGNETIC



PLAN NO. 218

LA CROSSE COUNTY HIGHWAY DEPARTMENT
LA CROSSE, WIS.
Paul A. Hartwig, Highway Commissioner

ROAD - SKEMP	TOWN - SHELBY
SURVEY BY - F.N.D.	DATE - 7-29-47
DRAWN BY - D.C.	DATE - 8-1-47
CHECKED BY	DATE
APPROVED BY	DATE

TOWN OF SHELBY

SKEMP ROAD

LA CROSSE COUNTY HIGHWAY DEPARTMENT

ONE SHEET