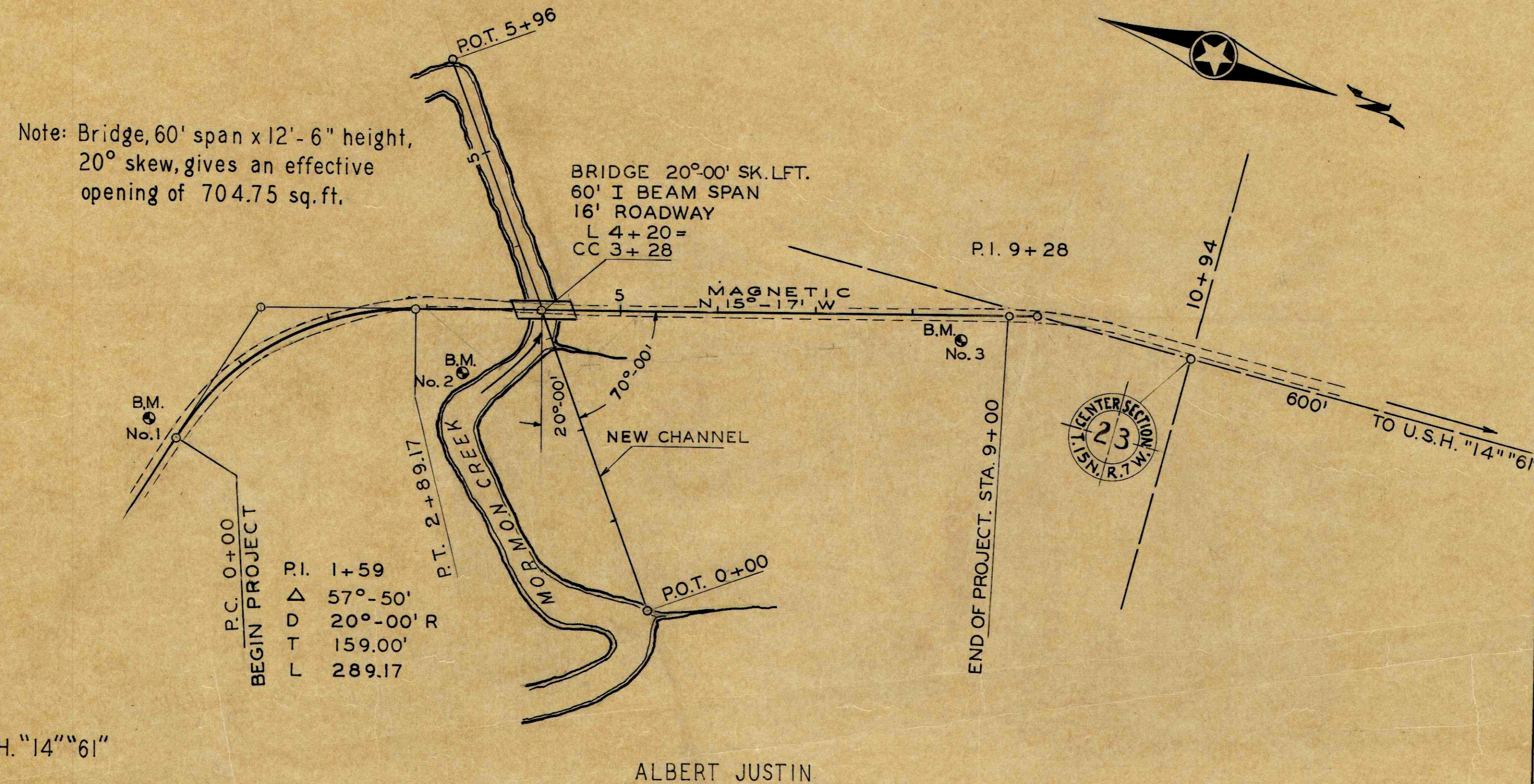
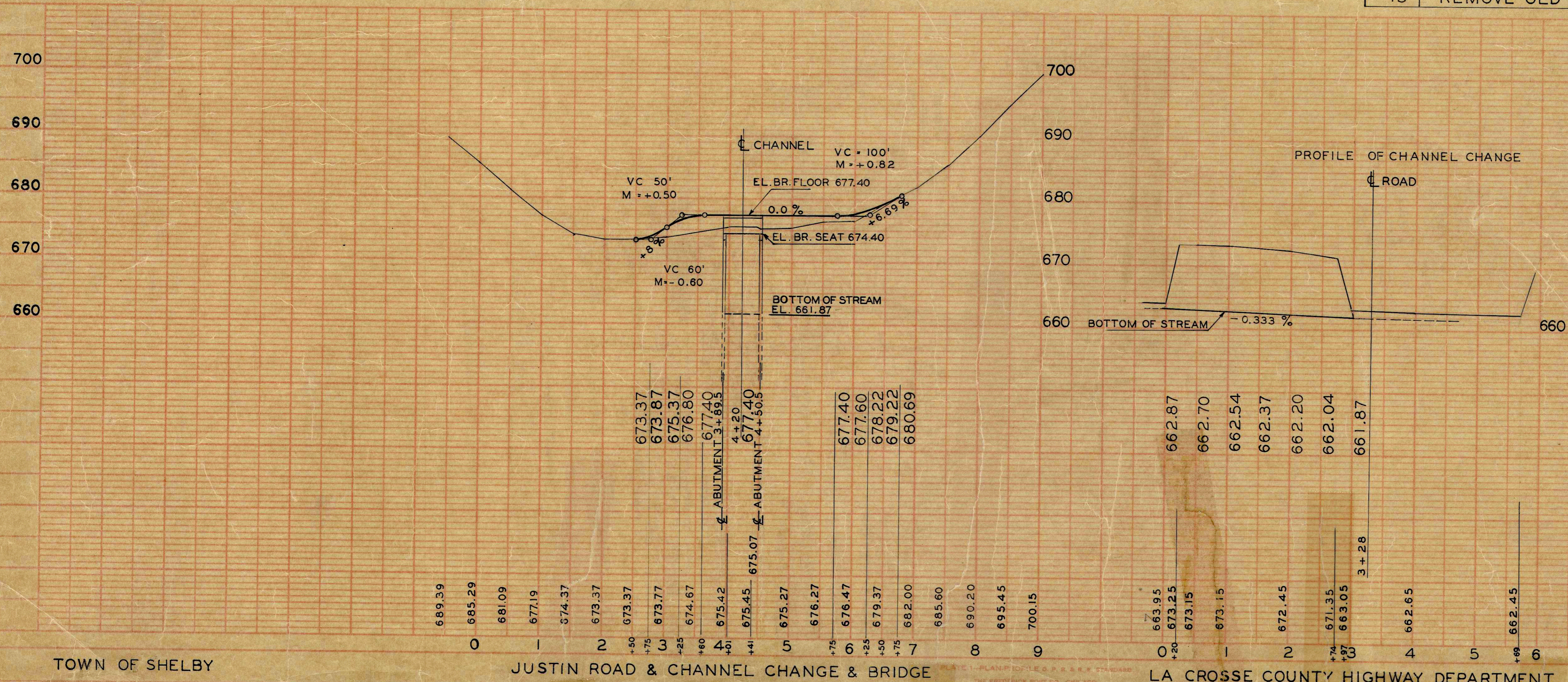


BENCH MARKS				
No.	STA.	DESCRIPTION		ELEV.
1	0+00	SPK. 7" CEDAR	30 FT. LFT.	686.27
2	3+35	" TEL. POLE	65 FT. RT.	673.57
3	8+50	" TEL. POLE	20 FT. RT.	694.40



ESTIMATE OF QUANTITIES		
ITEM	DESCRIPTION	QUANTITY
1	TEMP. ROAD, COMMON EXCAVATION	200
2	" " GRAVEL SURFACING	200
3	TEMP. BRIDGE, (30' SPAN-16' ROADWAY. COMPLETE.)	1
4	REMOVE OLD SURFACING	700
5	CONSTRUCT ROAD, COMMON EXCAVATION	1200
6	" " SURFACING, LOW TYPE	100
7	FURNISH & APPLY BIT. MATERIAL MC 3	7500
8	MANIPULATION	365
9	CHANNEL CHANGE, COMMON EXCAVATION.	1450
10	STRUCTURAL STEEL	31624
11	TREATED TIMBER PILING	1100
12	" TIMBER	15000
13	GALV. HARDWARE	1000
14	RIP-RAP	100
15	REMOVE OLD BRIDGE	1



102748
 31549
 F.N.D.
 D.C.
 PLAN
 160

102748
 31549
 F.N.D.
 D.C.
 PROFILE
 160

PLAN NO. 220

LA CROSSE COUNTY HIGHWAY DEPARTMENT
 LA CROSSE, WIS.
 Paul A. Hartwig, Highway Commission
 BRIDGE - JUSTIN RD. TOWN - SHELBY
 SURVEY BY - F.N.D. DATE - 10-2
 DRAWN BY - D.C. DATE - 3-15
 CHECKED BY - *[Signature]* DATE - 4-6
 APPROVED BY - *[Signature]* DATE - 4-6