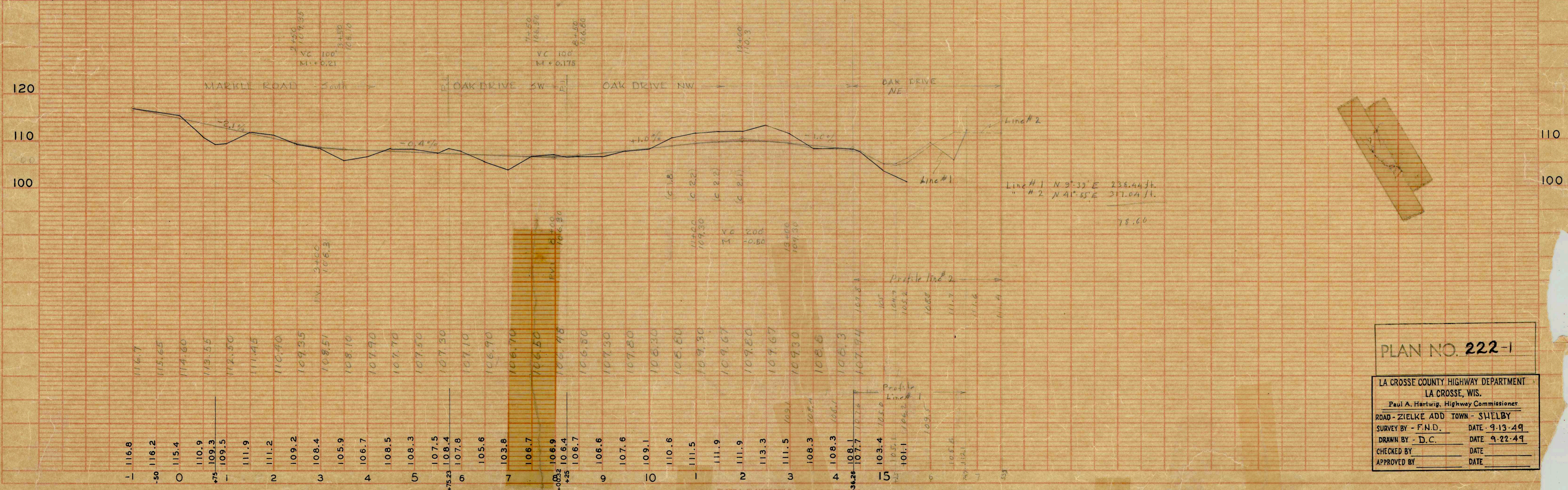


PLAN
 F.N.D.
 D.C.
 No. 159

STA.	DESCRIPTION	ELEV.
7+52	SPK. P.P. No. 9414 FF3J SE COR. BOSCHERT PROPERTY	117.16
13+78	SPK. P.P. No. 9414 FF3M 25 FT. LT.	107.35
	SPK. P.P. No. 9414 FF3S 24 FT. LT.	108.70

LENGTH 0.272 MILE



PROFILE
 F.N.D.
 D.C.
 No. 159

TOWN OF SHELBY

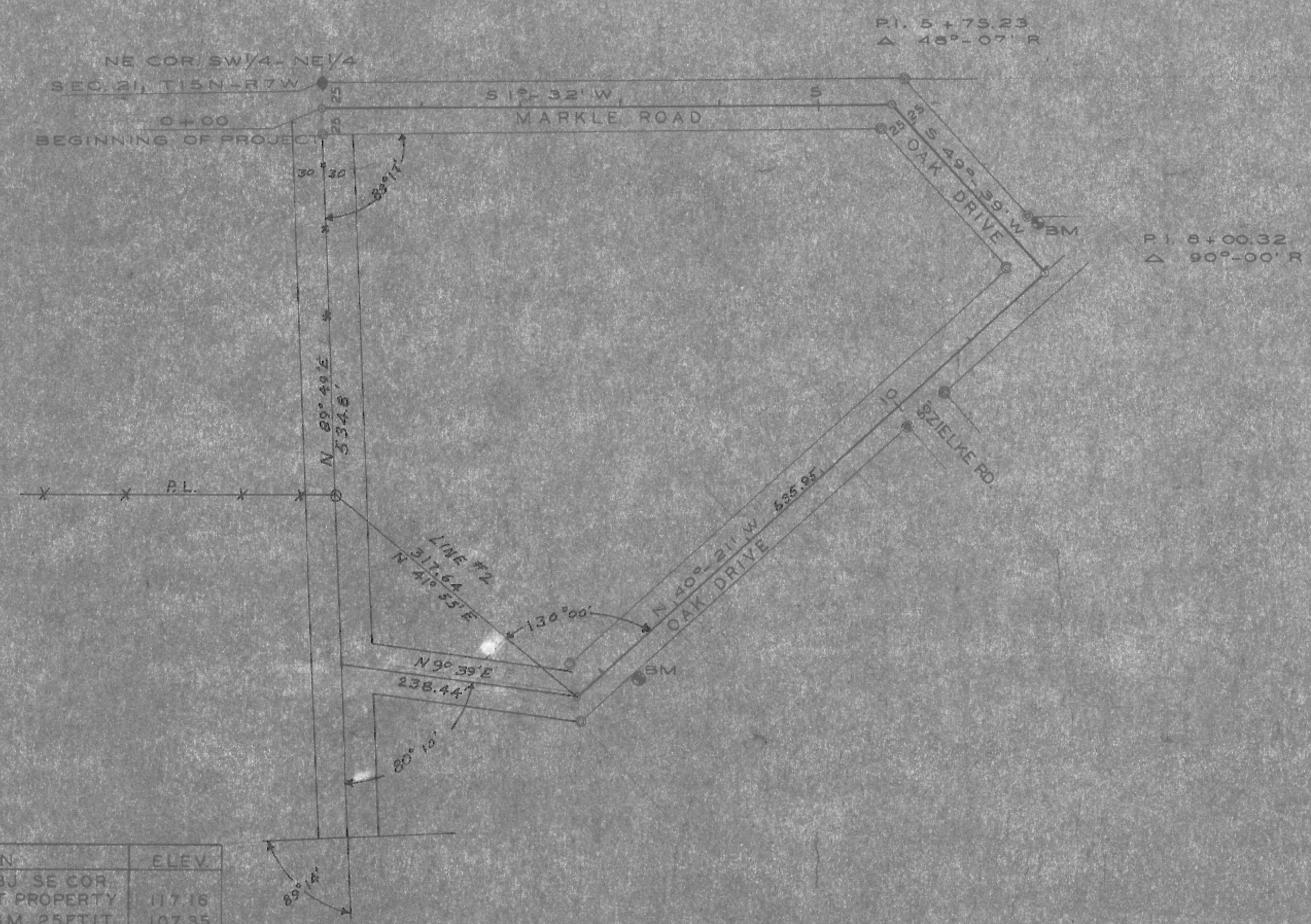
ZIELKE ADDITION

LA CROSSE COUNTY HIGHWAY DEPARTMENT

PLAN NO. 222-1

LA CROSSE COUNTY HIGHWAY DEPARTMENT
 LA CROSSE, WIS.
 Paul A. Harwig, Highway Commissioner
 ROAD - ZIELKE ADD TOWN - SHELBY
 SURVEY BY - F.N.D. DATE 9-13-49
 DRAWN BY - D.C. DATE 9-22-49
 CHECKED BY _____ DATE _____
 APPROVED BY _____ DATE _____

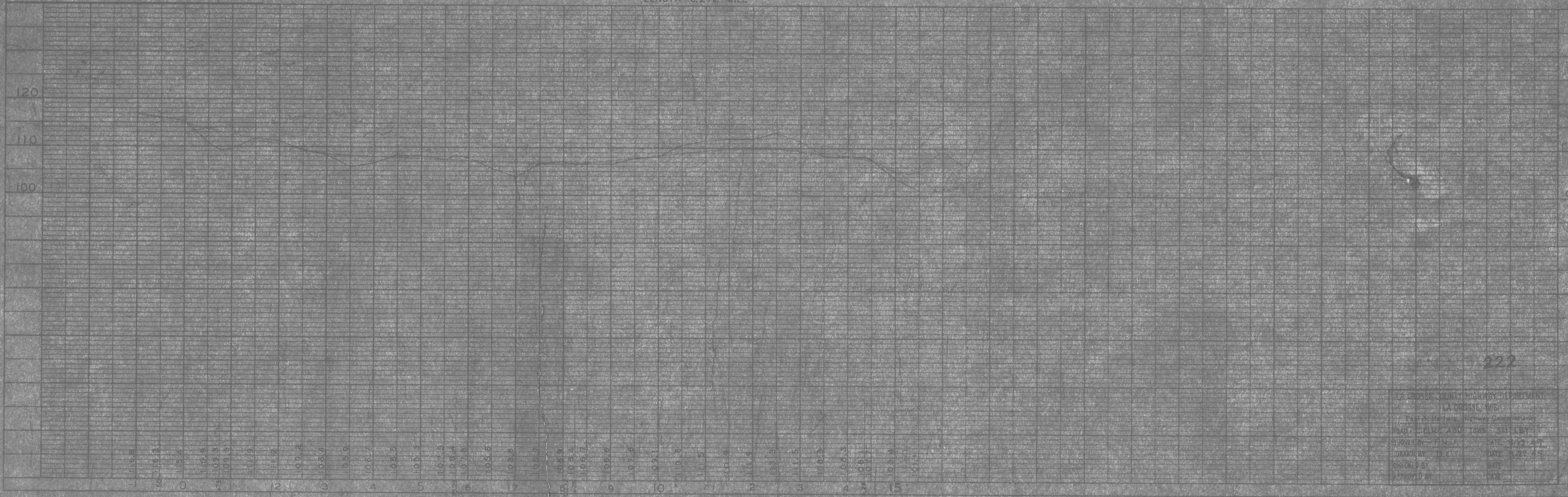
ONE SHEET



LENGTH 0.272 MILE

BENCH MARKS

STA.	DESCRIPTION	ELEV.
7+52	SPK. PP No. 9414 FF3J SE COR BOSCHERT PROPERTY	117.16
7+52	SPK. PP No. 9414 FF3M 25 FT. LT.	107.35
7+76	SPK. PP No. 9414 FF3S 24 FT. LT.	108.70



TOWN OF SHELBY

ZIELKE ADDITION

LA GROSSE COUNTY HIGHWAY DEPARTMENT

ONE SHEET

LA GROSSE COUNTY HIGHWAY DEPARTMENT
 LA GROSSE, WIS.
 ROAD ZIELKE ADD. TOWN SHELBY
 DRAWN BY: J.C.D. DATE: 5/13/49
 CHECKED BY: J.C.D. DATE: 5/22/49
 APPROVED BY: DATE:

PLAN
 DRAWING NO. 159
 DATE: 5/13/49
 BY: J.C.D.

PROFILE
 DRAWING NO. 159
 DATE: 5/13/49
 BY: J.C.D.