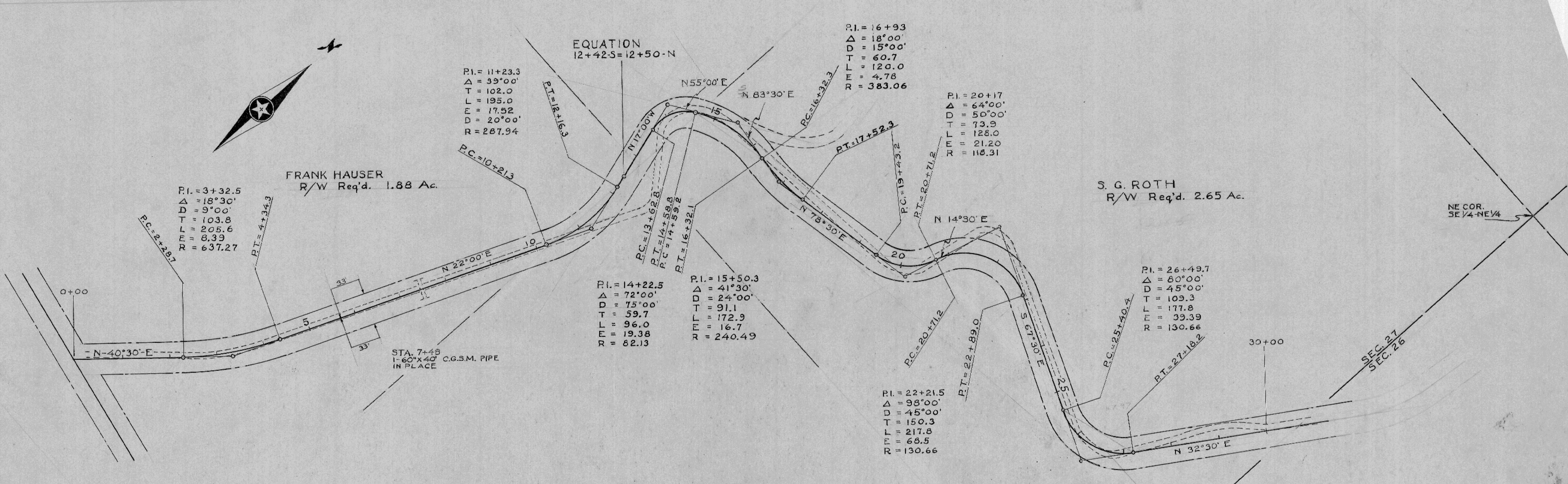


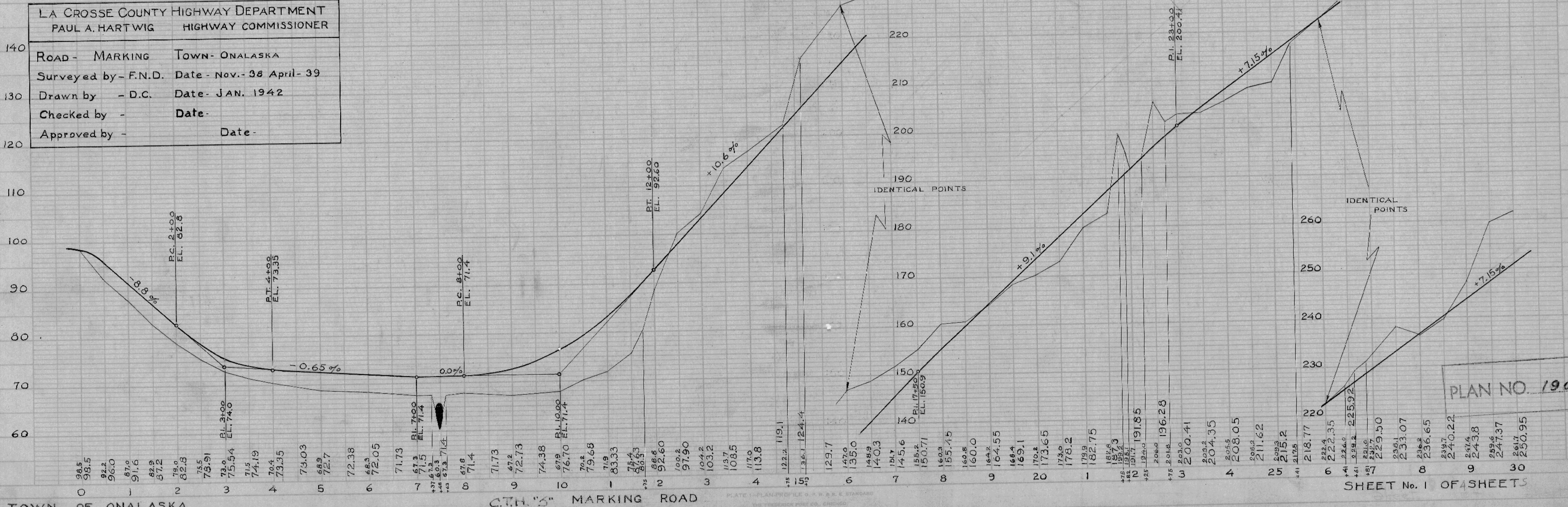
PLAN
 DRAWING NO. 190
 NOTE BOOK ADJUSTMENT SHEET
 NO. OF SHEETS 4

PROFILE
 DRAWING NO. 190
 NOTE BOOK ADJUSTMENT SHEET
 NO. OF SHEETS 4



LA CROSSE COUNTY HIGHWAY DEPARTMENT
 PAUL A. HARTWIG HIGHWAY COMMISSIONER

ROAD - MARKING TOWN - ONALASKA
 Surveyed by - F.N.D. Date - Nov. - 38 April - 39
 Drawn by - D.C. Date - JAN. 1942
 Checked by - Date -
 Approved by - Date -



TOWN OF ONALASKA

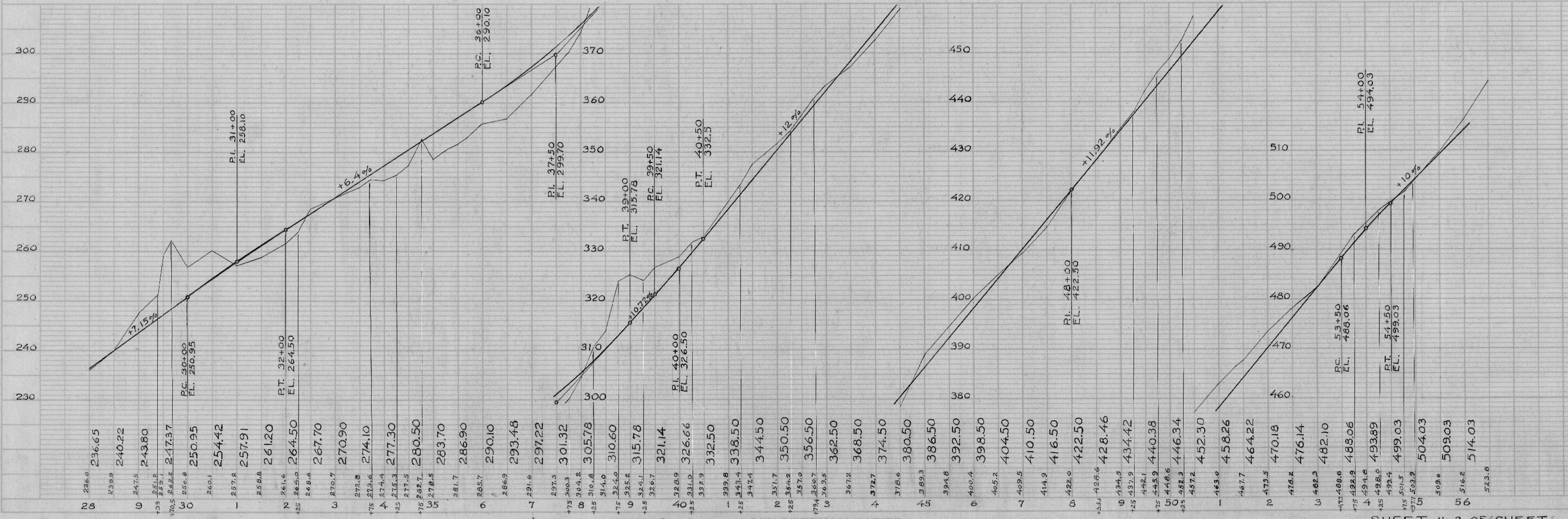
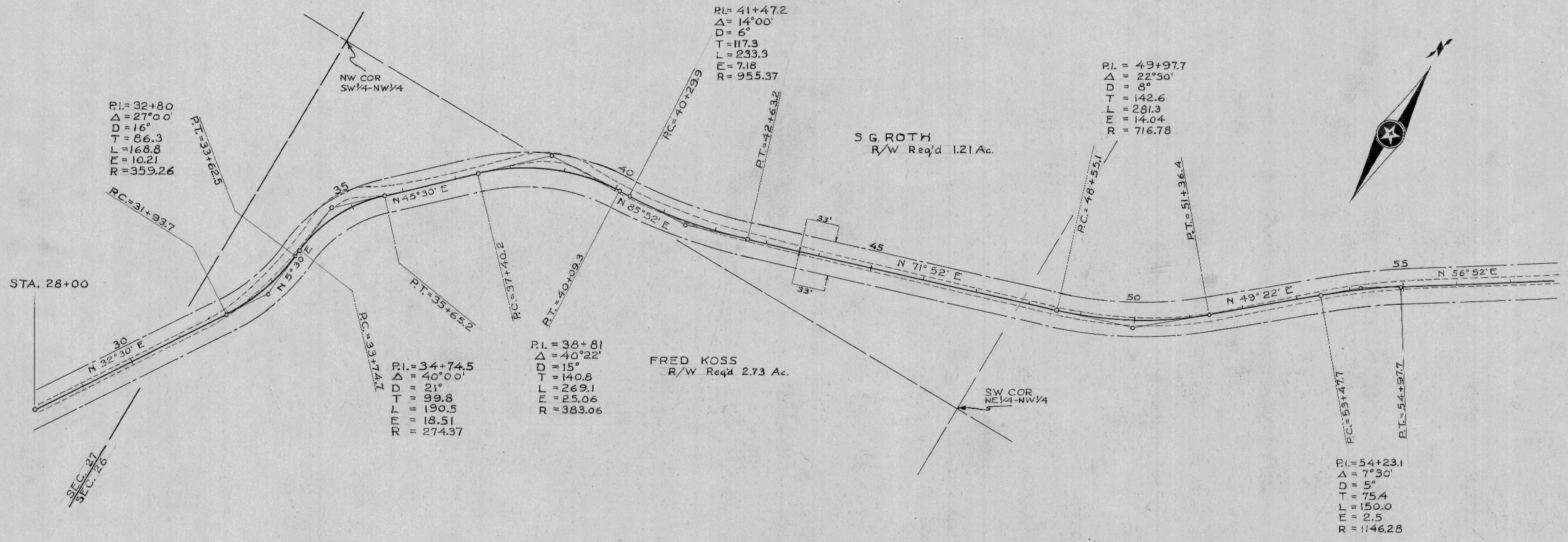
C.T.H. 5 MARKING ROAD

PLAN NO. 190

SHEET No. 1 OF 4 SHEETS

PLAN
 REVISIONS
 DATE
 BY
 CHECKED
 APPROVED
 NO. 1
 DATE

PROFILE
 REVISIONS
 DATE
 BY
 CHECKED
 APPROVED
 NO. 1
 DATE

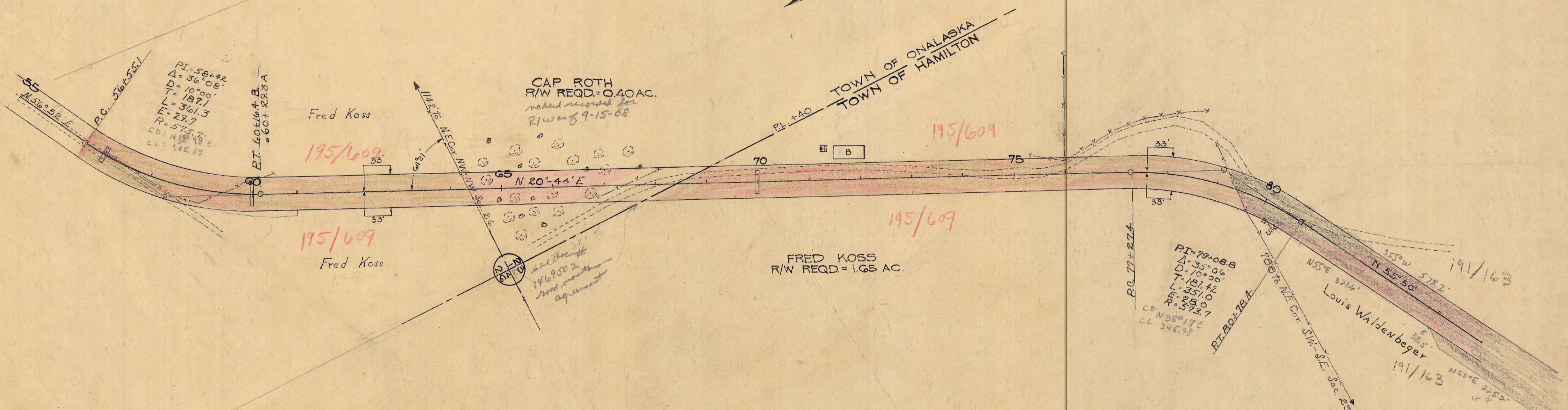
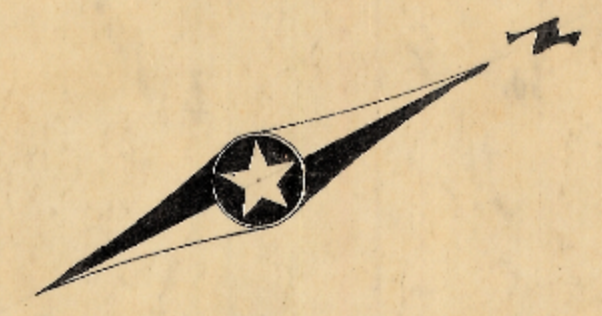


TOWN OF ONALASKA

C.T.H. MARKING ROAD

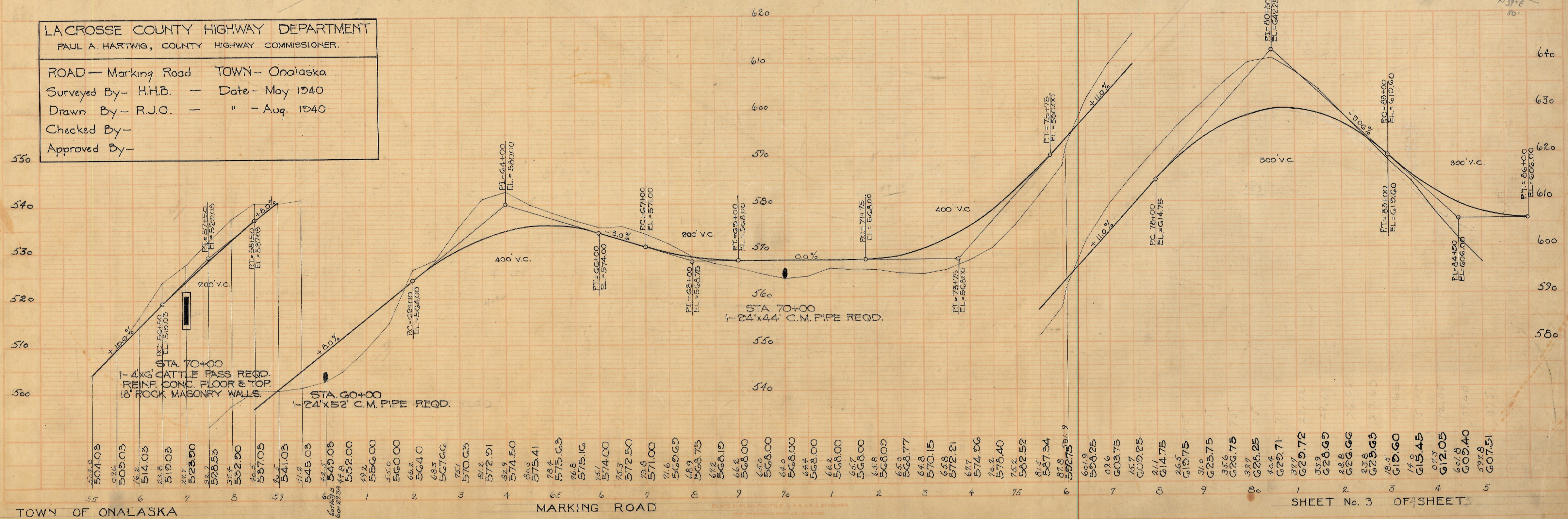
PLATE 1 - PLAN PROFILE (P. 5, 6, 8, STANDARD)
 THE FREEBORN POST CO., CHICAGO

SHEET No. 2 OF 4 SHEETS



LACROSSE COUNTY HIGHWAY DEPARTMENT
 PAUL A. HARTWIG, COUNTY HIGHWAY COMMISSIONER.

ROAD — Marking Road TOWN — Onalaska
 Surveyed By — H.H.B. — Date — May 1940
 Drawn By — R.J.O. — " — Aug. 1940
 Checked By —
 Approved By —



TOWN OF ONALASKA

MARKING ROAD

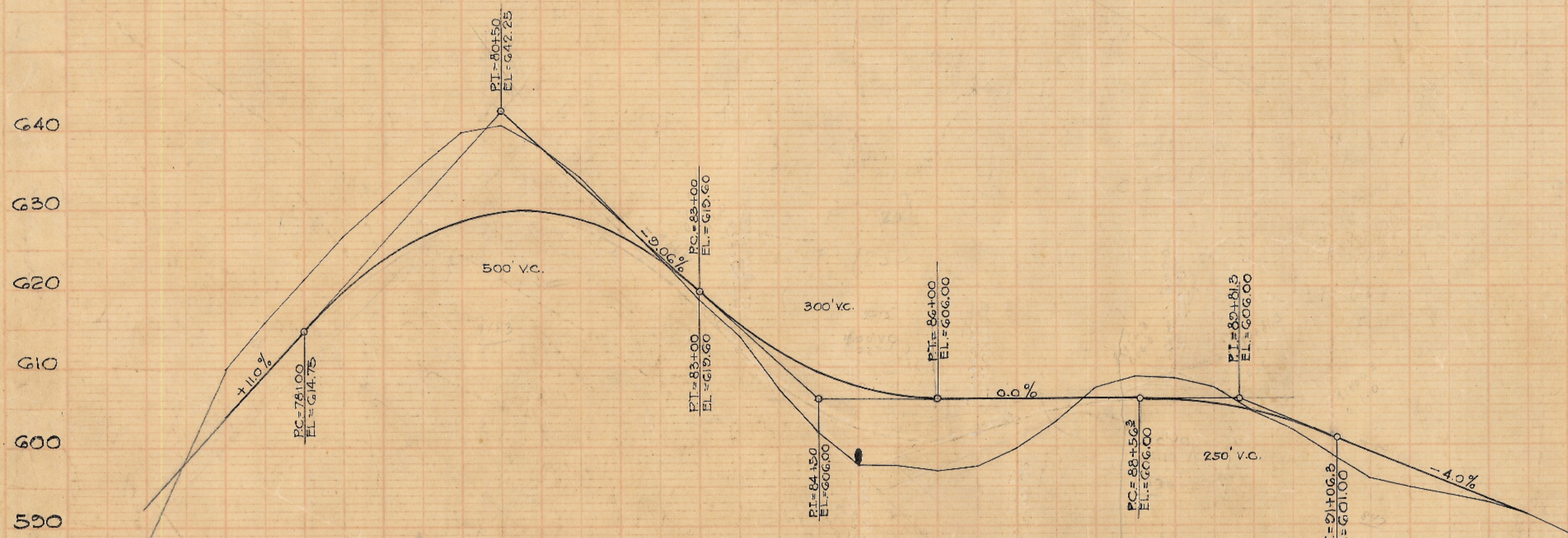
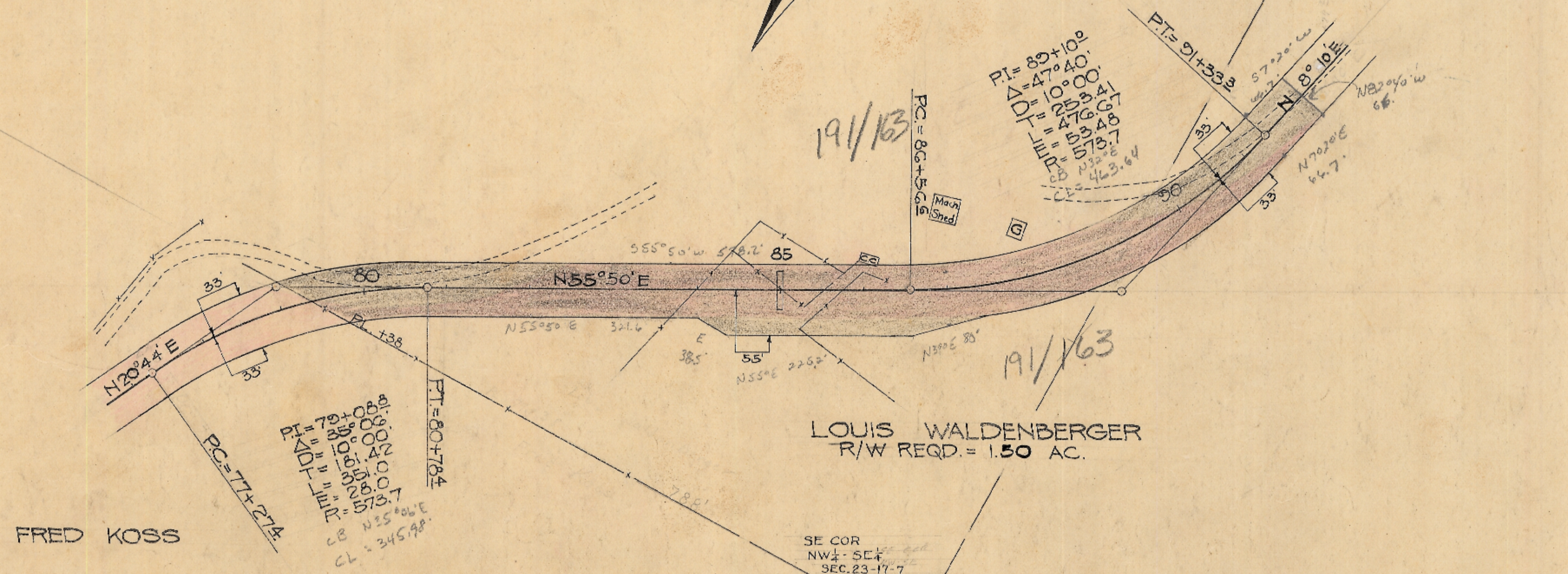
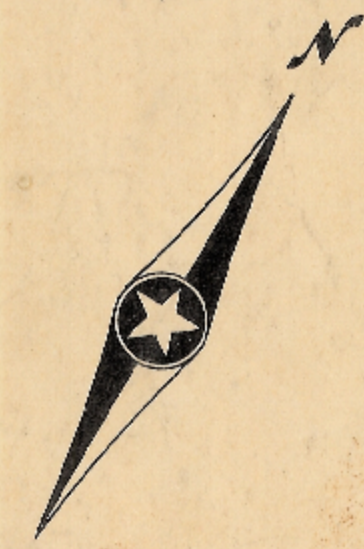
SHEET No. 3 OF 4 SHEETS

H.H.B. 8-40
L.J.M. 8-40

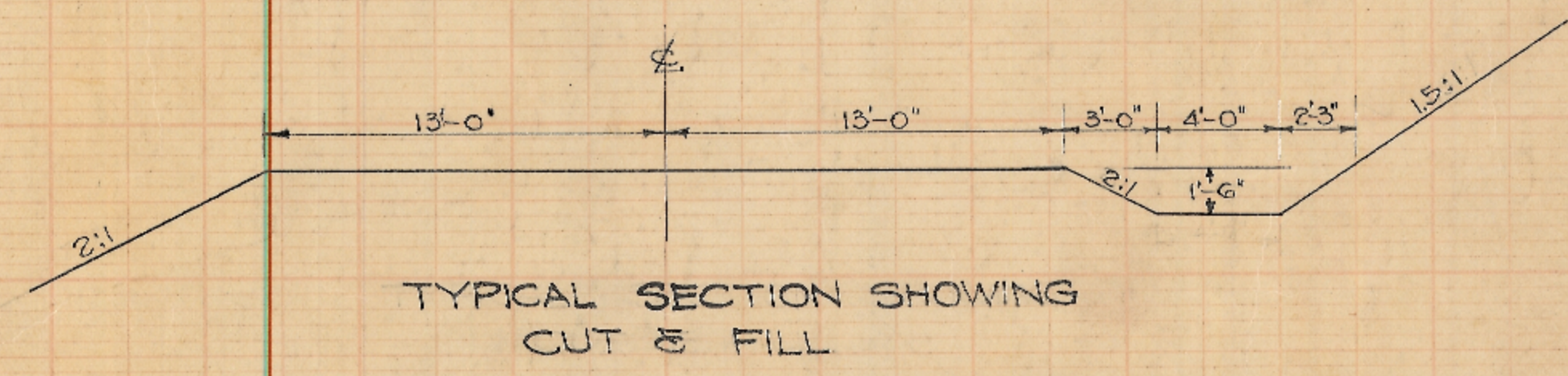
141

H.H.B. 8-44
L.J.M. 8-44

143



STA 85+00
1-24" x 70' C.M. PIPE REQD



TYPICAL SECTION SHOWING CUT & FILL

76	77	78	79	80	81	82	83	84	85	86	87	88	89	90	91	92	93	94															
592.75	603.75	609.25	614.75	619.75	623.75	626.75	628.25	629.71	629.72	628.69	626.66	623.63	619.60	615.45	612.05	609.40	607.51	606.36	606.00	606.00	606.00	606.00	606.00	606.00	606.00	602.99	601.25	599.25	597.25	595.25	593.25	591.25	588.80

PLAN NO. 190