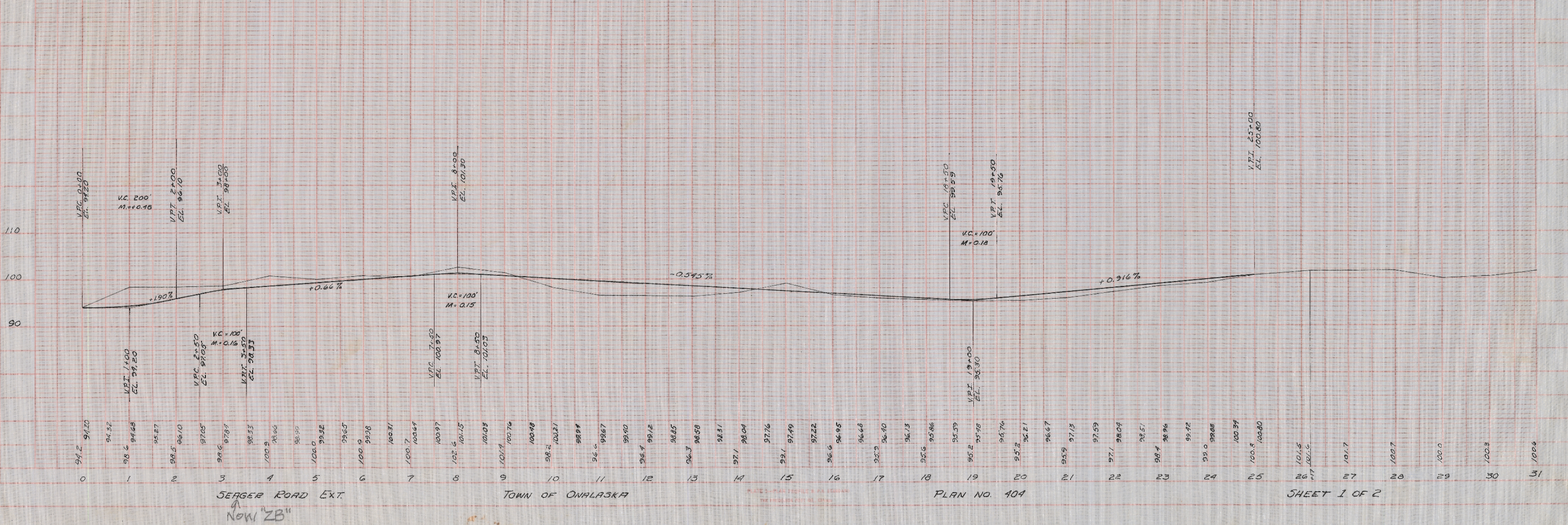
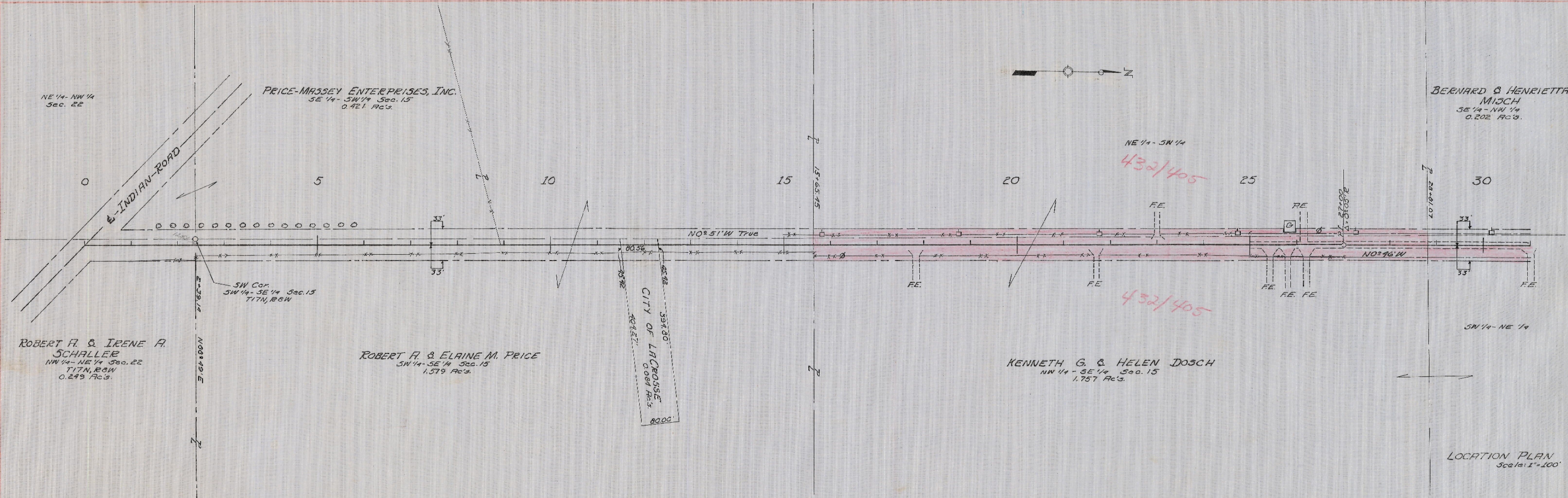


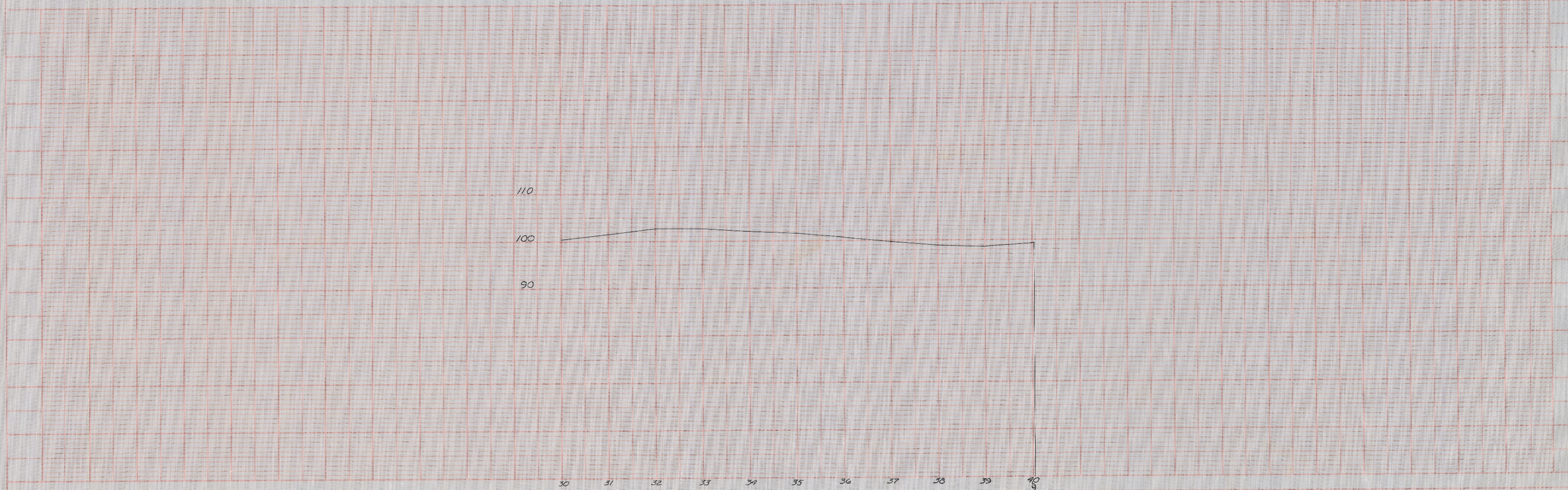
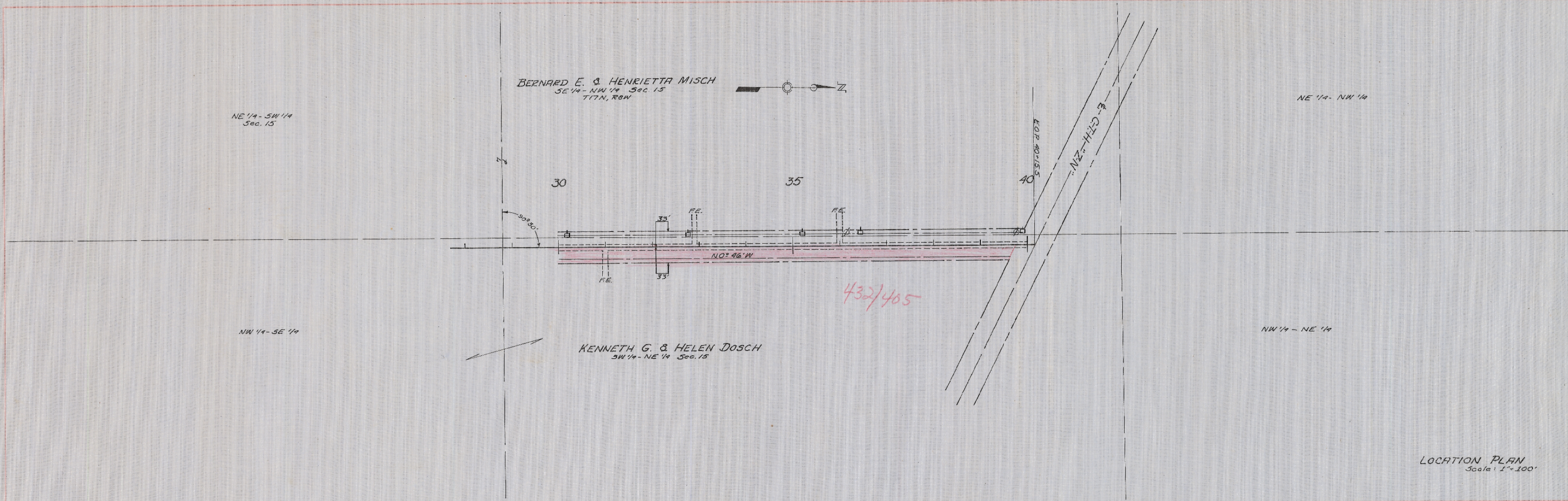
DATE: 6-19-67
 DRAWN BY: JMS
 CHECKED BY: JMS
 SCALE: 1"=100'
 PROJECT: SEAGER ROAD EXT. TOWN OF ONALASKA

DATE: 6-19-67
 DRAWN BY: JMS
 CHECKED BY: JMS
 SCALE: 1"=100'
 PROJECT: SEAGER ROAD EXT. TOWN OF ONALASKA



8-1-57
 8-15-57
 FEB
 DHS
 1-3-53
 1-3-53

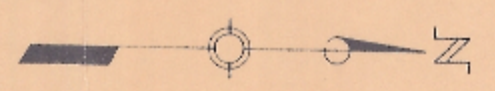
8-1-57
 8-15-57
 FEB
 DHS
 1-3-53
 1-3-53



SEAGER RD. EXT.
 ↑
 Now "ZB"

N.S.P.

BERNARD E & HENRIETTA MISCH
SE 1/4 - NW 1/4 Sec 15
T17N, R20W



NE 1/4 - SW 1/4
Sec. 15

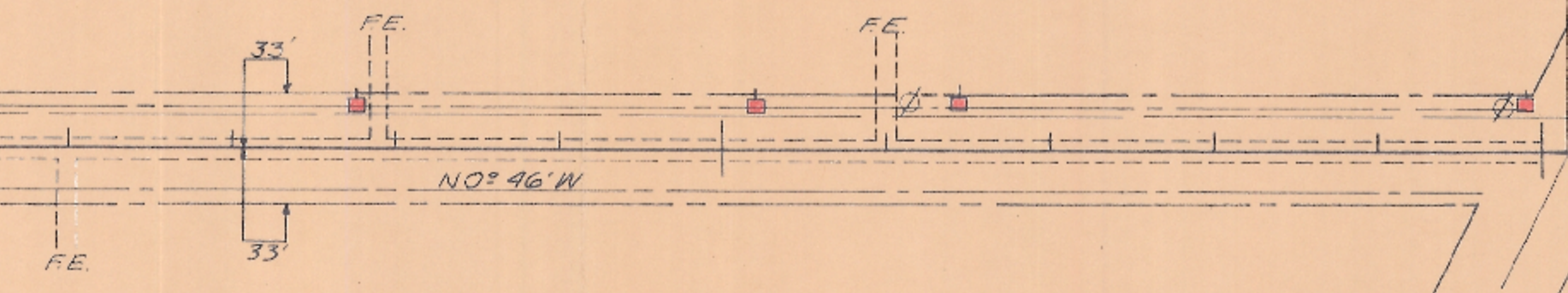
NE 1/4 - NW 1/4

30

35

40

30° 25'



NW 1/4 - SE 1/4

KENNETH G. & HELEN DOSCH
SW 1/4 - NE 1/4 Sec. 15

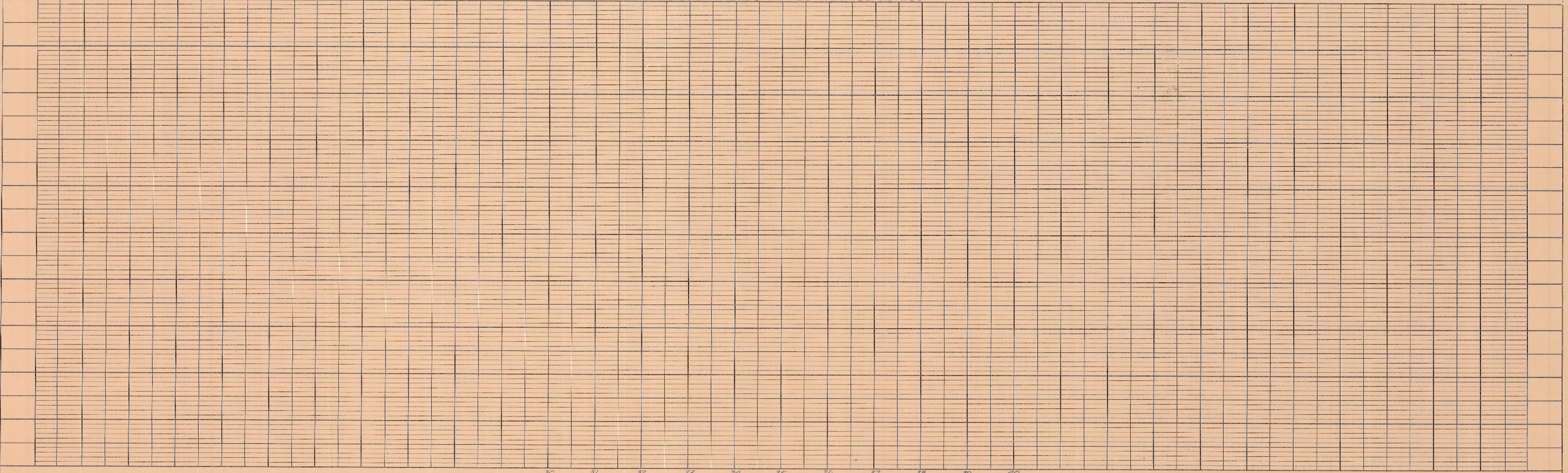
NW 1/4 - NE 1/4

LOCATION PLAN
Scale: 1"=100'

POWER POLES TO BE MOVED MARKED IN RED

PLAN	NOTE BOOK NO. 22752
SURVEYED	
ALIGNED	
CHECKED	
BY	E.G.F.
DATE	6-24-92

PROFILE	NOTE BOOK NO.
SURVEYED	
ALIGNED	
CHECKED	
BY	
DATE	



SEAGER RD. EXT.

TOWN OF ONALASKA

PLATE 1-PLAN PROFILE B. P.R. STANDARD
THE FREDERICK POST CO., Chicago

PLAN NO. 404

SHEET 2 OF 2