

LAKE
ONALASKA

SW - NW, SEC. 32
T17N, R7W

SE - NW
SEC. 32, T17N, R7W

NW - SW
SEC. 32, T17N, R7W

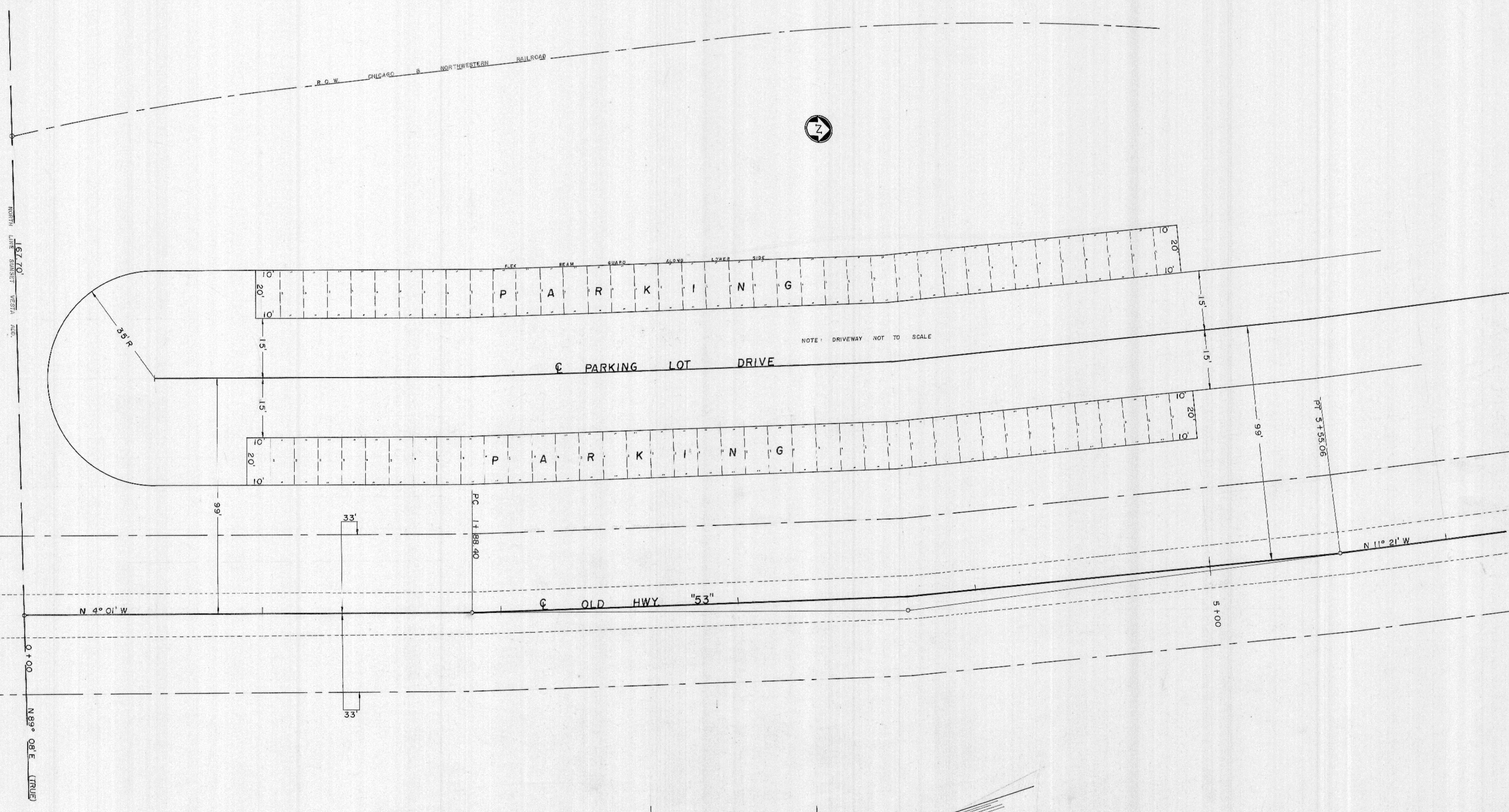
NE - SW
SEC. 32, T17N, R7W

NOTE:
WIDTH OF DRIVEWAY NOT TO SCALE.

PI 3472.00
Δ 7' 20" L
D 2' 00"
T 183.60'
L 366.66'
E 5.87'

PARKING CAPACITY 79 STALLS

LACROSSE COUNTY HIGHWAY DEPARTMENT		TOWN ONALASKA
ORVAL H. SMITH		HIGHWAY COMMISSIONER
ROAD PARKING LOT		
SURVEYED BY	R.E.S.	DATE 2-28-72
FIELD BOOK	J-142	
LEVEL BOOK	154	
DRAWN BY	F.W.J.	DATE 3-3-72
SCALE	50' = 1'	
CHECKED BY		DATE
APPROVED BY	PLAN 462	DATE



PARKING CAPACITY 79 STALLS

LACROSSE COUNTY HIGHWAY DEPARTMENT

ORVAL H. SMITH HIGHWAY COMMISSIONER

ROAD PARKING LOT	TOWN ONALASKA
SURVEYED BY R.E.B.	DATE 2-28-72
FIELD BOOK J-145	
LEVEL BOOK 154	
DRAWN BY P.W.J.	DATE 3-7-72
SCALE 1" = 20'	
CHECKED BY	DATE
APPROVED BY <i>Plan 462</i>	DATE