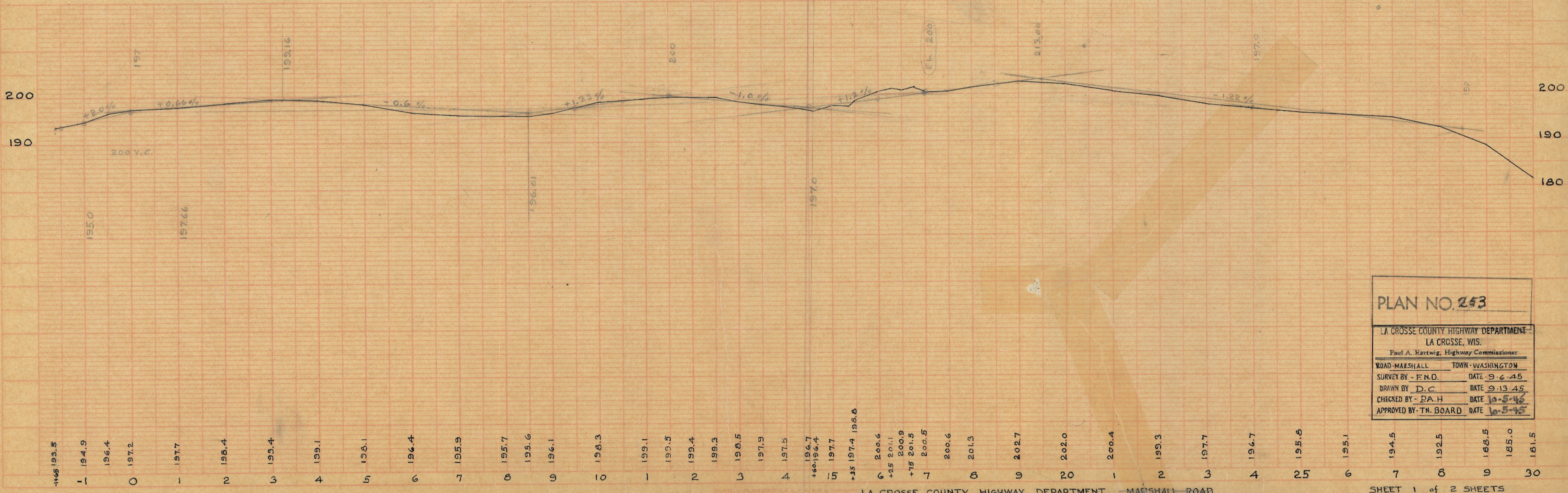
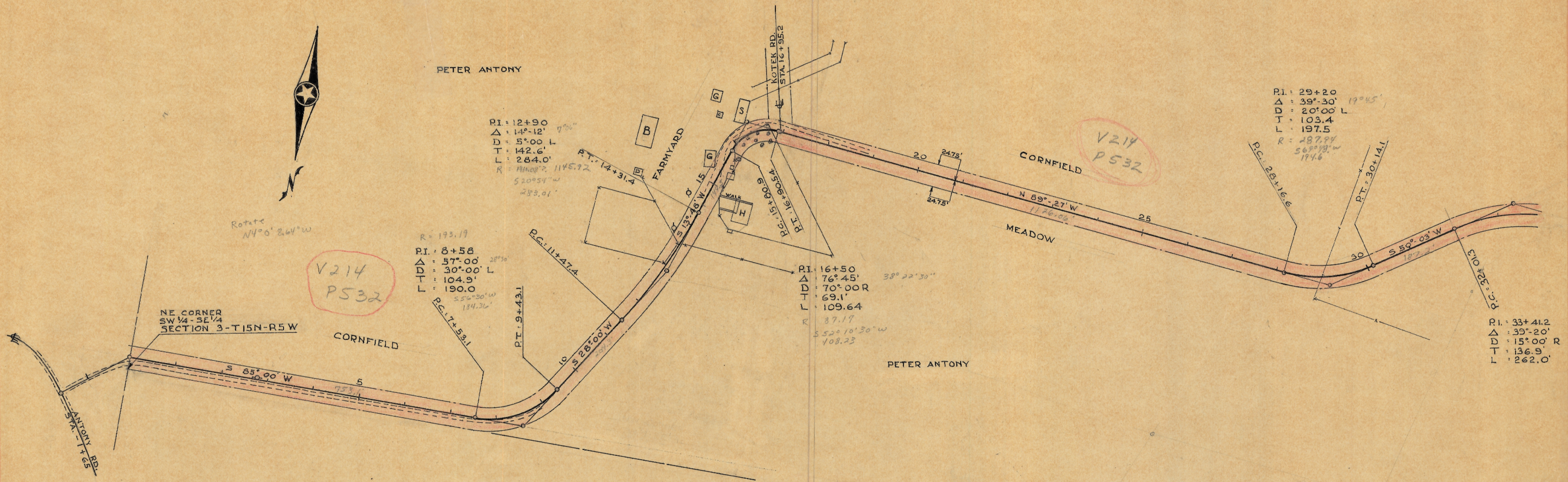


PLAN NO. 253
 F.M.D. 9-5-45
 D.C. 9-13-45

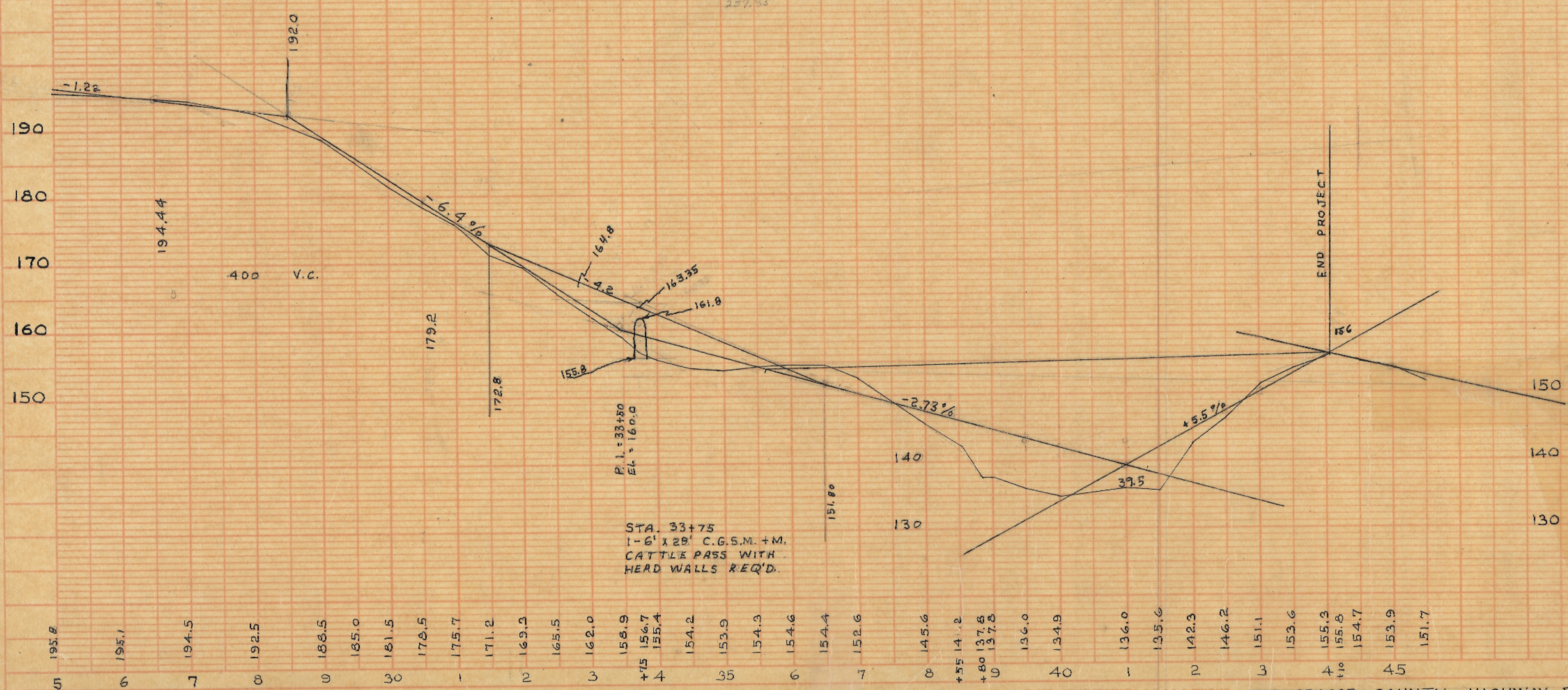
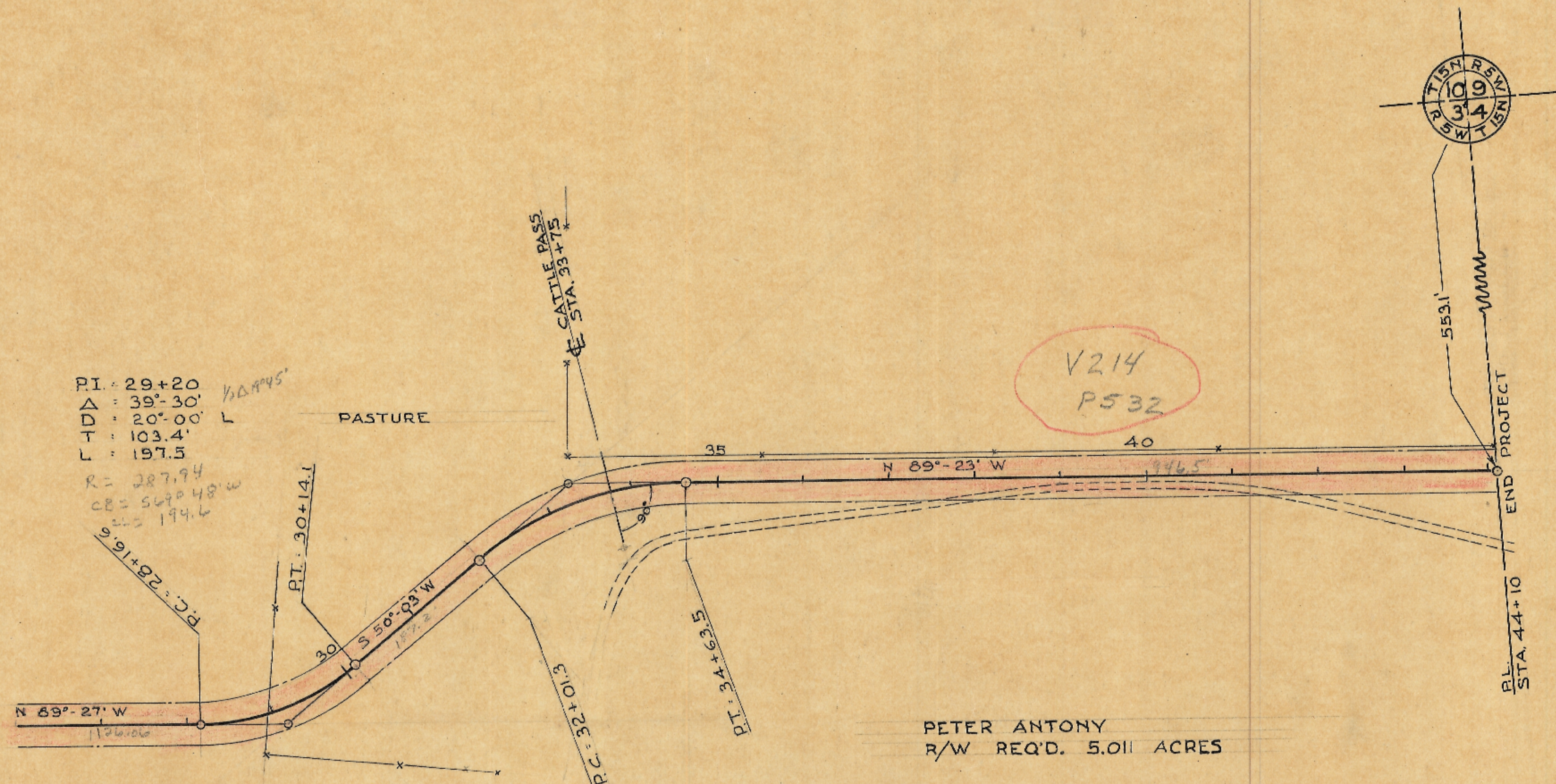
PLAN NO. 253
 F.M.D. 9-5-45
 D.C. 9-13-45



PLAN NO. 253
 LA CROSSE COUNTY HIGHWAY DEPARTMENT
 LA CROSSE, WIS.
 Paul A. Hartwig, Highway Commissioner
 ROAD-MARSHALL TOWN-WASHINGTON
 SURVEY BY - F.N.D. DATE 9-6-45
 DRAWN BY - D.C. DATE 9-13-45
 CHECKED BY - P.A.H. DATE 10-5-45
 APPROVED BY - TH. BOARD DATE 10-5-45

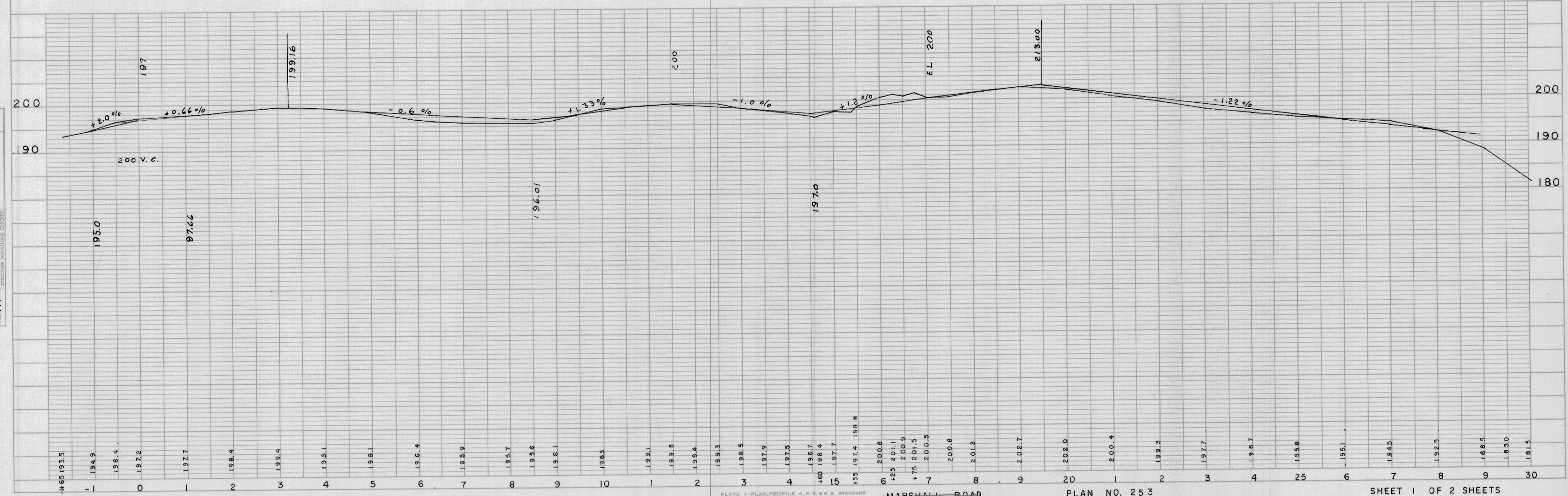
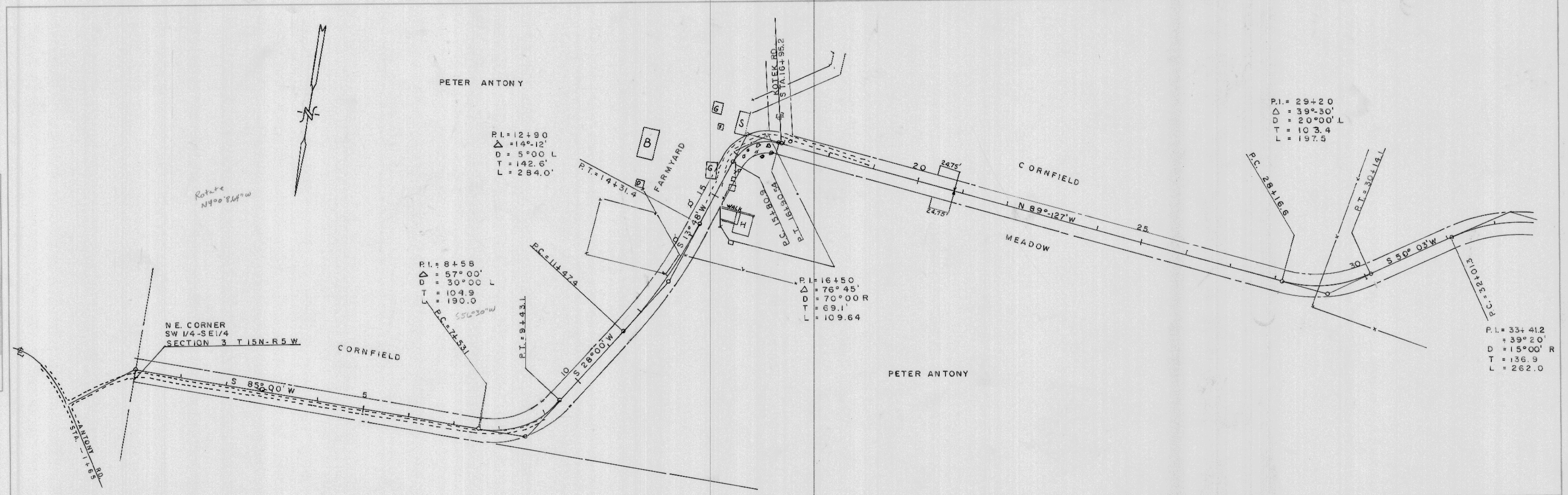
PLAN
 DRAWING NO. 172
 DATE 9-15-45
 D.C. 9-13-45

PROFILE
 DRAWING NO. 171
 DATE 9-15-45
 D.C. 9-13-45

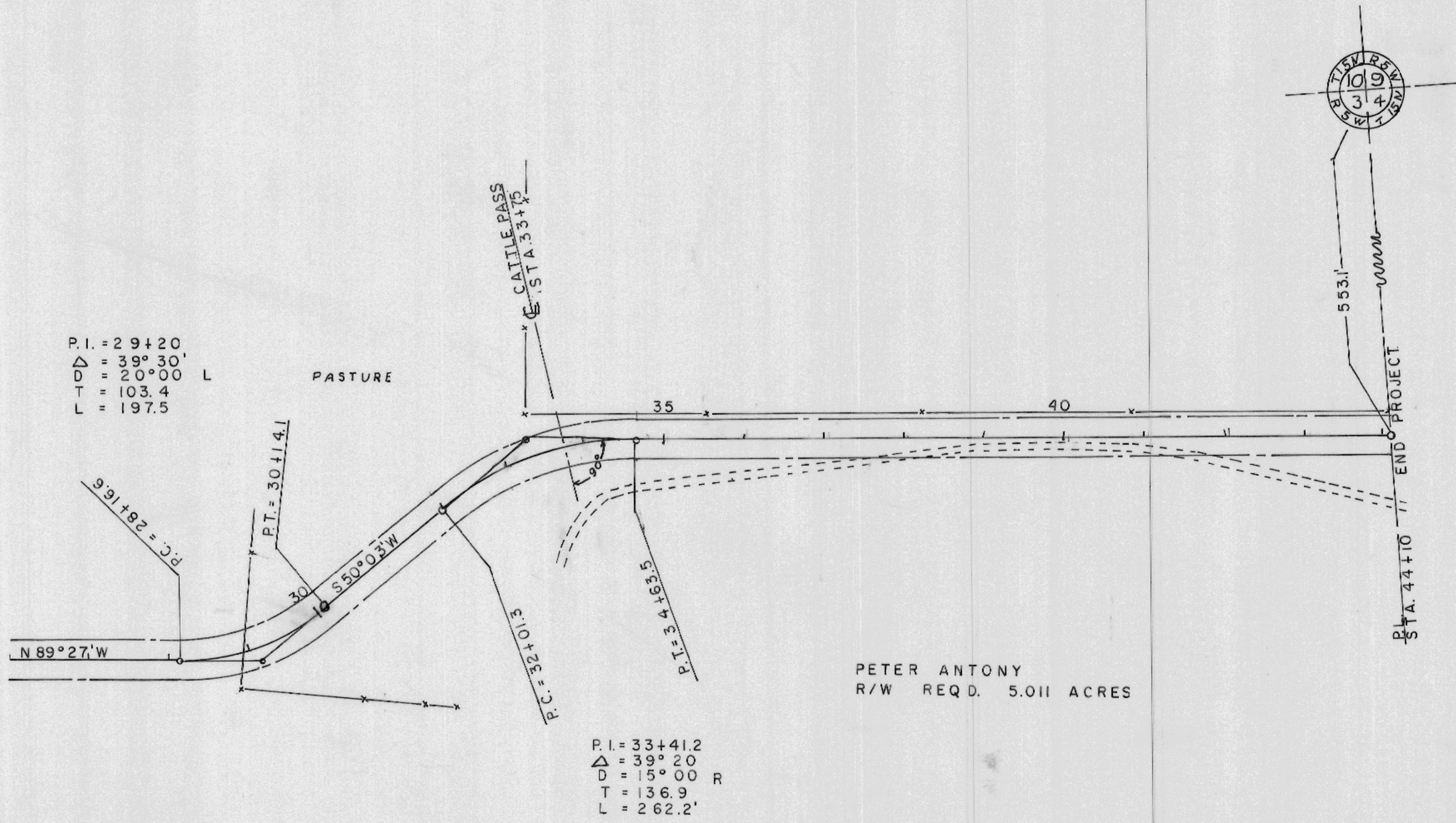


DRAWN BY: F.N.D. 9-5-45
 CHECKED BY: D.C. 9-13-45
 NOTE BOOK: ALIGNMENT CHECKED
 No. 172

DRAWN BY: F.N.D. 9-5-45
 CHECKED BY: D.C. 9-13-45
 NOTE BOOK: GRADES CHECKED
 No. 171



PLAN
 SURVEYED BY F.M.D. 9-7-53
 NOTE BOOK ALPHABETIC CHECKED
 No. 171



PROFILE
 SURVEYED BY F.M.D. 9-7-53
 NOTE BOOK GRADE CHECKED
 No. 171

