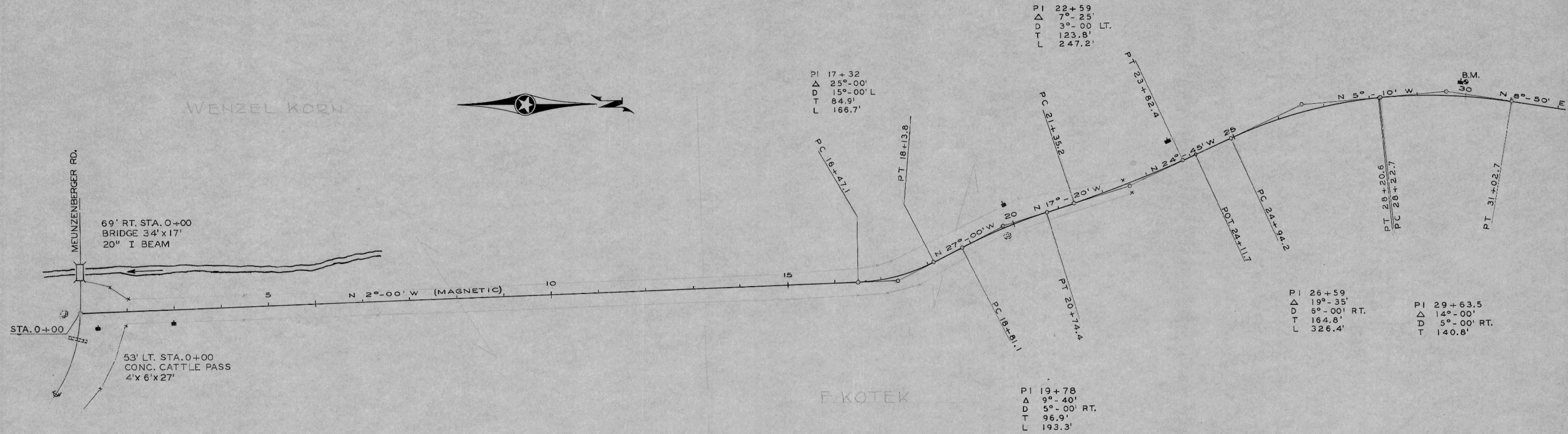


F.N.D.
D.C.
5-12-49
5-25-49
PLAN
NOTE BOOK SPACES (ORDIN.)
NO. 172

F.N.D.
D.C.
5-24-49
5-25-49
PROFILE
NOTE BOOK SPACES (ORDIN.)
NO. 173

WENZEL KORN

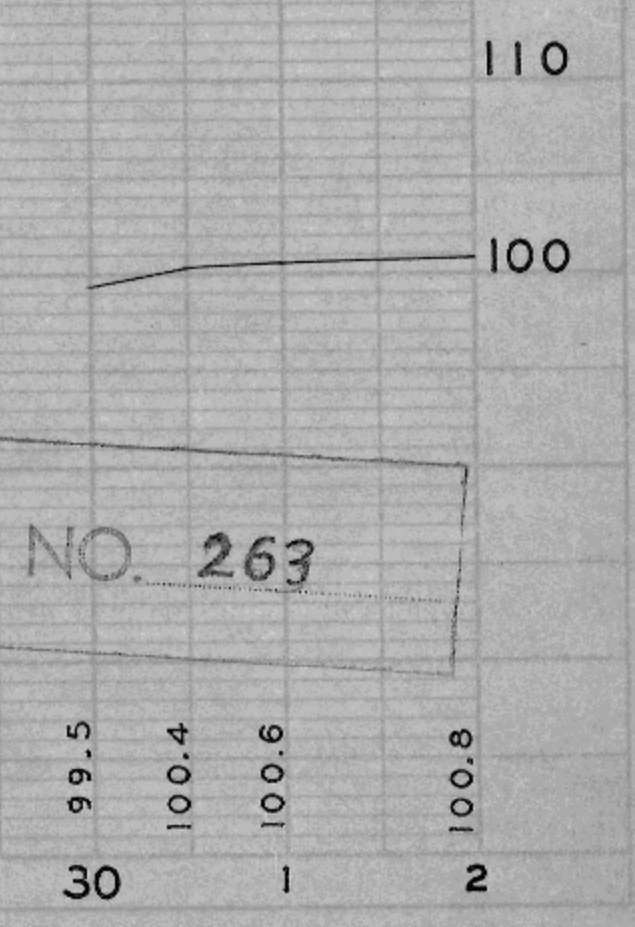


F. KOTEK

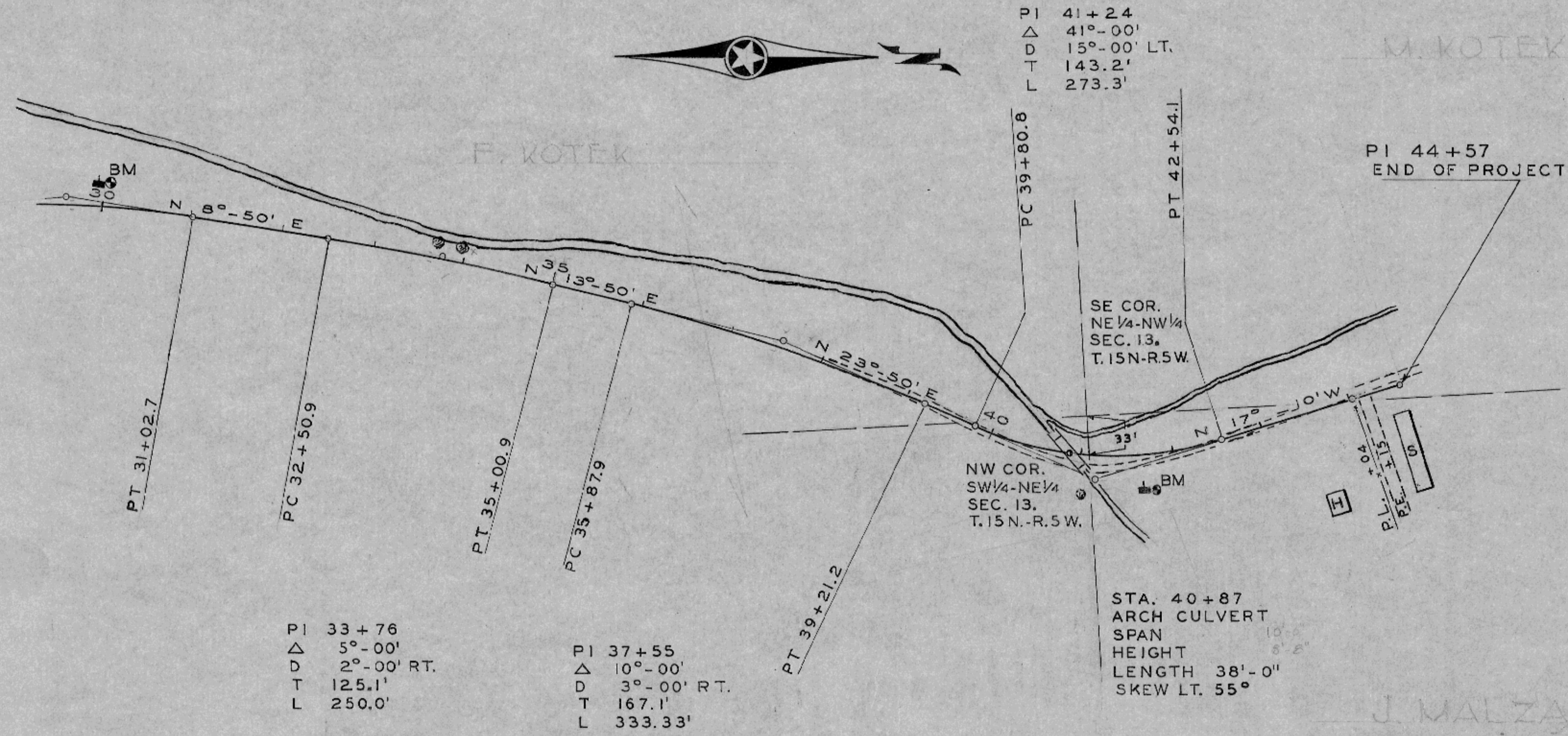
TOTAL LENGTH 0.84 MILE

BENCH MARK		
STA.	DESCRIPTION	ELEV.
29+96	SPK. IN P.P. 12 FEET LEFT	100.00

PLAN NO. 263



BENCH MARKS		
STA.	DESCRIPTION	ELEV.
29+96	SPK. IN RP.	12 FT. LFT.
41+60	SPK. IN RP.	35 FT. RT.
		100.00
		115.35



PLAN
 5/24/49
 F.N.D.
 D.C.
 172

PROFILE
 5/24/49
 F.N.D.
 D.C.
 173



TOWN OF WASHINGTON

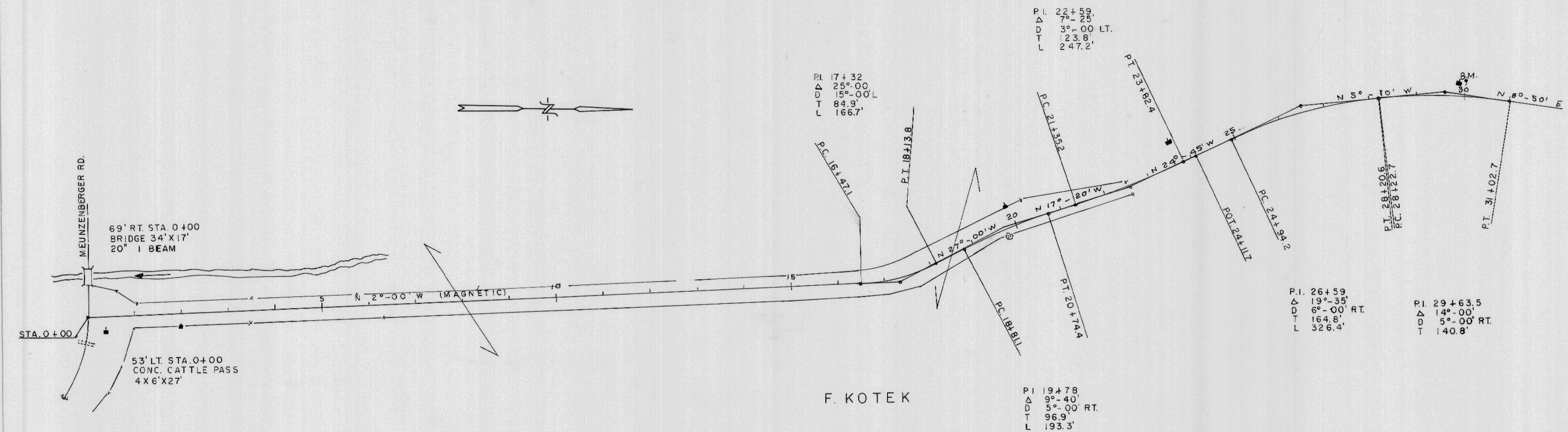
KORN COULEE ROAD

LA CROSSE COUNTY HIGHWAY DEPARTMENT

SHEET No. 2

SURVEYED BY F.N.D. 5-18-17
 PLANNED BY D.C. 5-18-17
 NOTE BOOK NO. 172
 CHECKED BY F.N.D.
 DATE 5-18-17

SURVEYED BY F.N.D. 5-18-17
 PROFILE CHECKED BY D.C. 5-18-17
 NOTE BOOK NO. 173
 CHECKED BY F.N.D.
 DATE 5-18-17



BENCH MARK		
STA.	DESCRIPTION	ELEV.
29+96	SPK. IN P.P. 12 FEET LEFT	100.00

