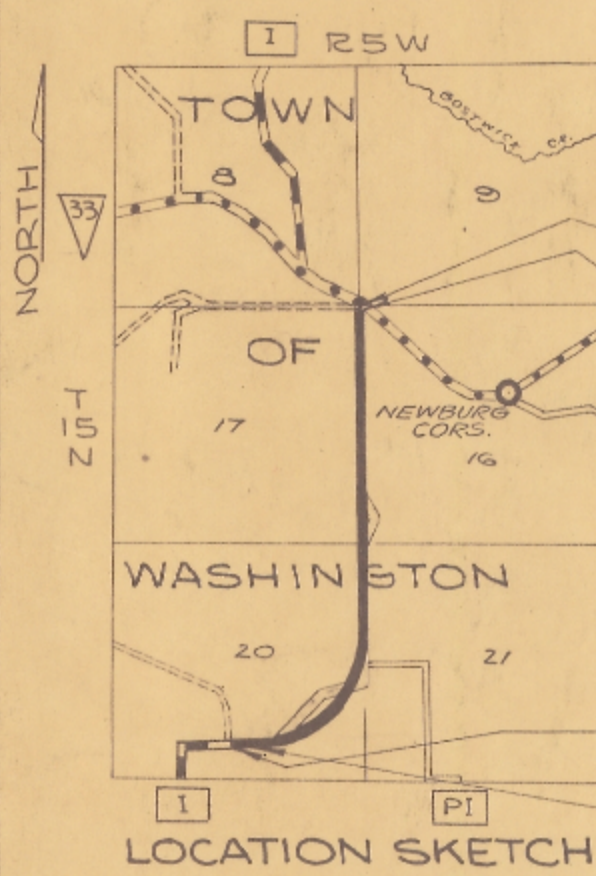


B.P.R. DIVISION	PROJECT	SHEET NUMBER	TOTAL SHEETS
4	DS 1421(1)		

PROJECT D.S. 1421(1)  
SOUTH CO. LINE-S.T.H. 33 ROAD  
C.T.H. 1  
LA CROSSE COUNTY  
CODE 32.6-1421.0-11.1  
DATED: AUGUST 11, 1958

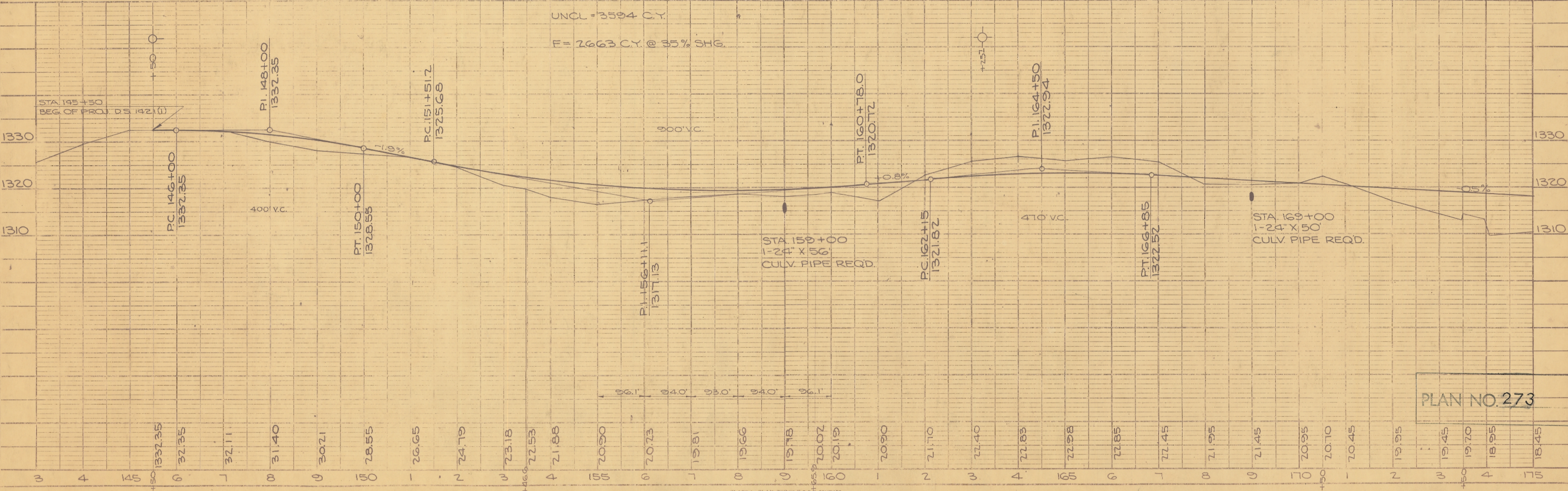
STA. 145+63.5  
BEG. OF RELOC. ORDER  
LOCATED 270' WEST & 1990'  
SOUTH OF THE CENTER OF  
SEC. 20-T15N-R5W

DATE	BY	REVISIONS
6-30	R.M.S.	
6-30	E.T.E.	



NET LENGTH OF CENTERLINE STA. 145+50 TO 175+00 = 2973.7 LIN. FT.

DATE	BY	REVISIONS
6-30	R.M.S.	
6-30	L.A.B.	



PLAN NO. 273

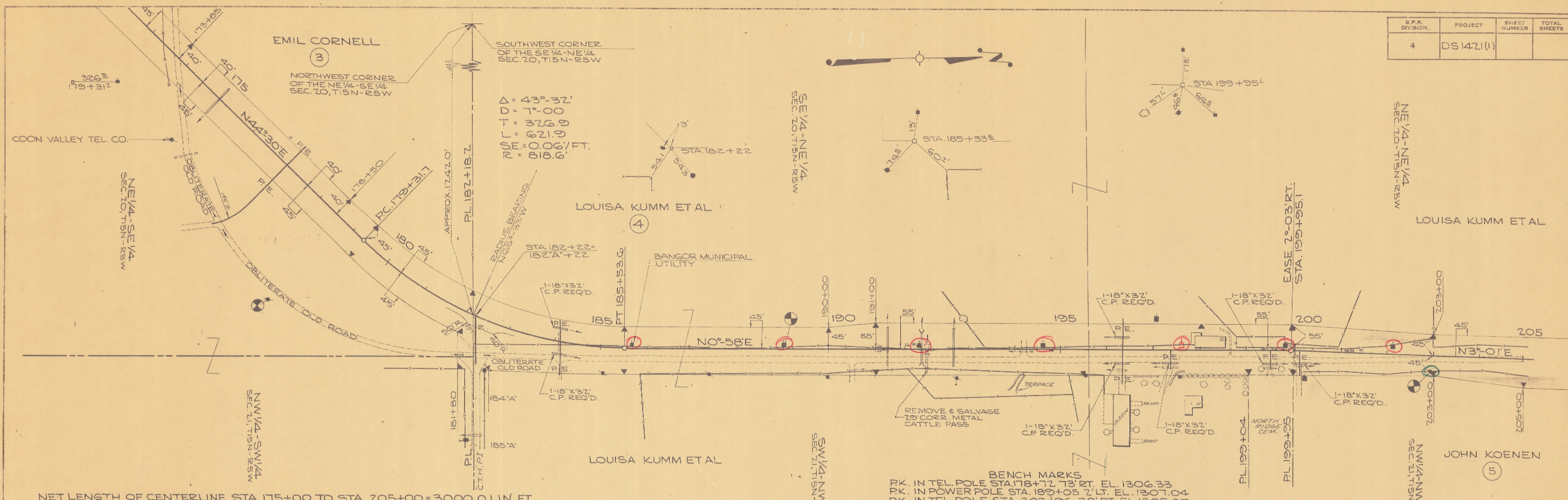
*Construction Date - May 1, 1959*  
*File Copy Notes to remove Utility Poles by La Crosse County Highway Dept.*  
 (1) Poles to be moved - Bangor Municipal Utility  
 (2) Poles to be moved - Coon Valley Telephone Co.



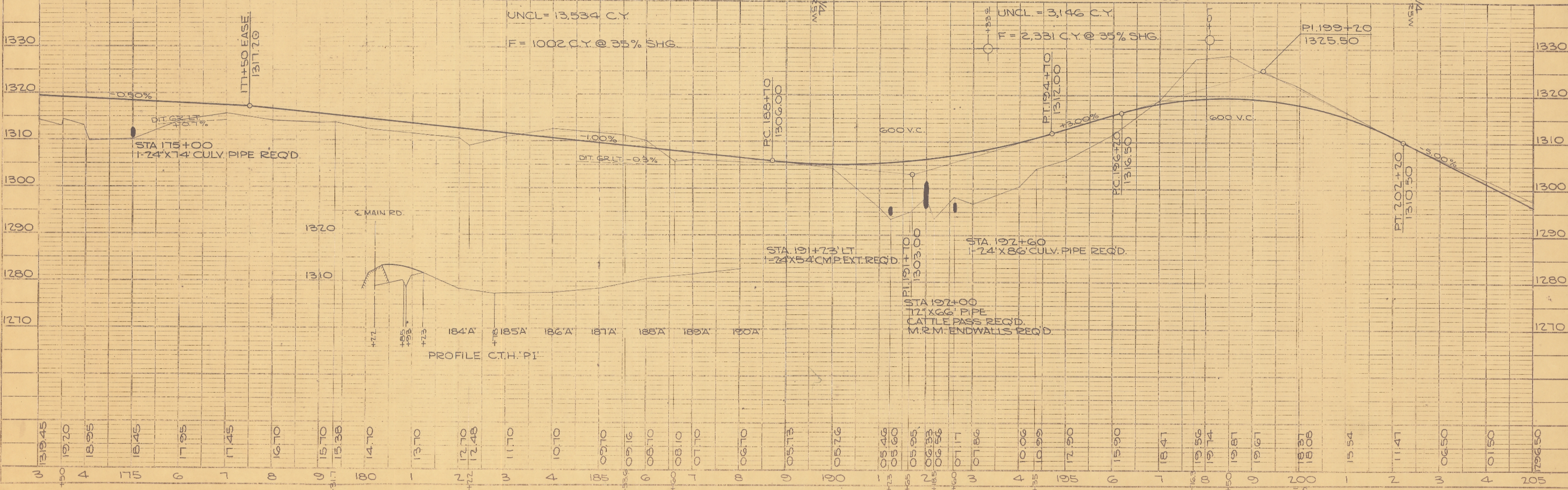
E.P.R. DIVISION	PROJECT	SHEET NUMBER	TOTAL SHEETS
4	DS 1471(1)		

DATE	BY
0-3-33	R.M.S.
NO. 22	E.T.E.

DATE	BY
0-3-33	R.M.S.
0-3-33	L.A.B.



NET LENGTH OF CENTERLINE STA. 175+00 TO STA. 205+00 = 3000.0 LIN. FT.

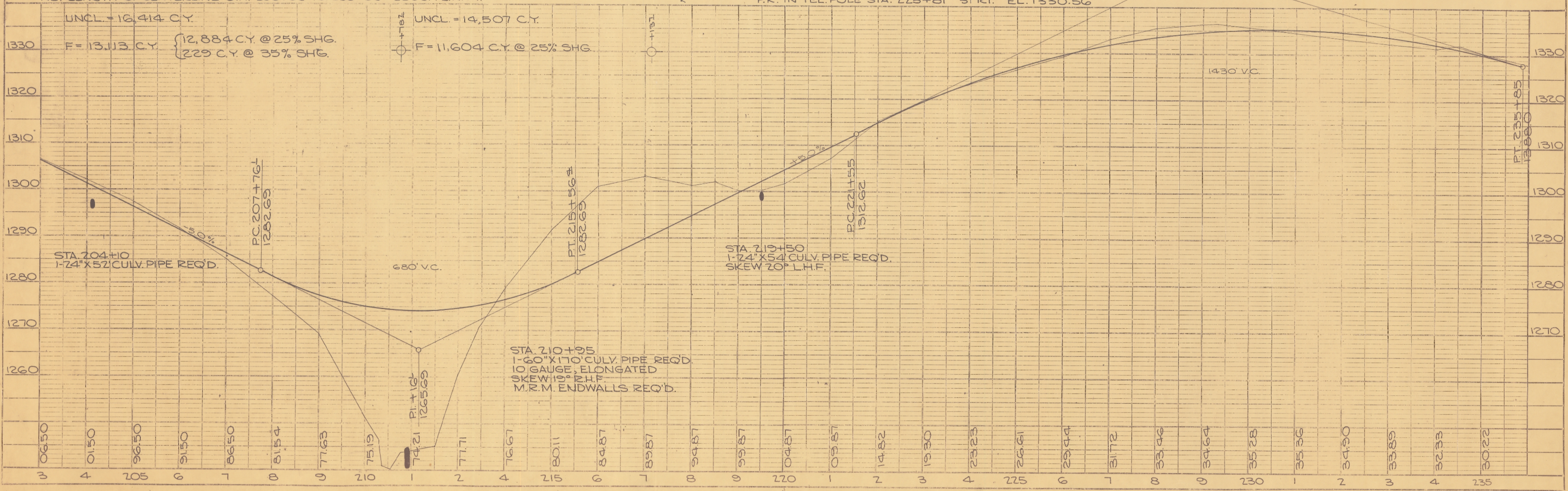
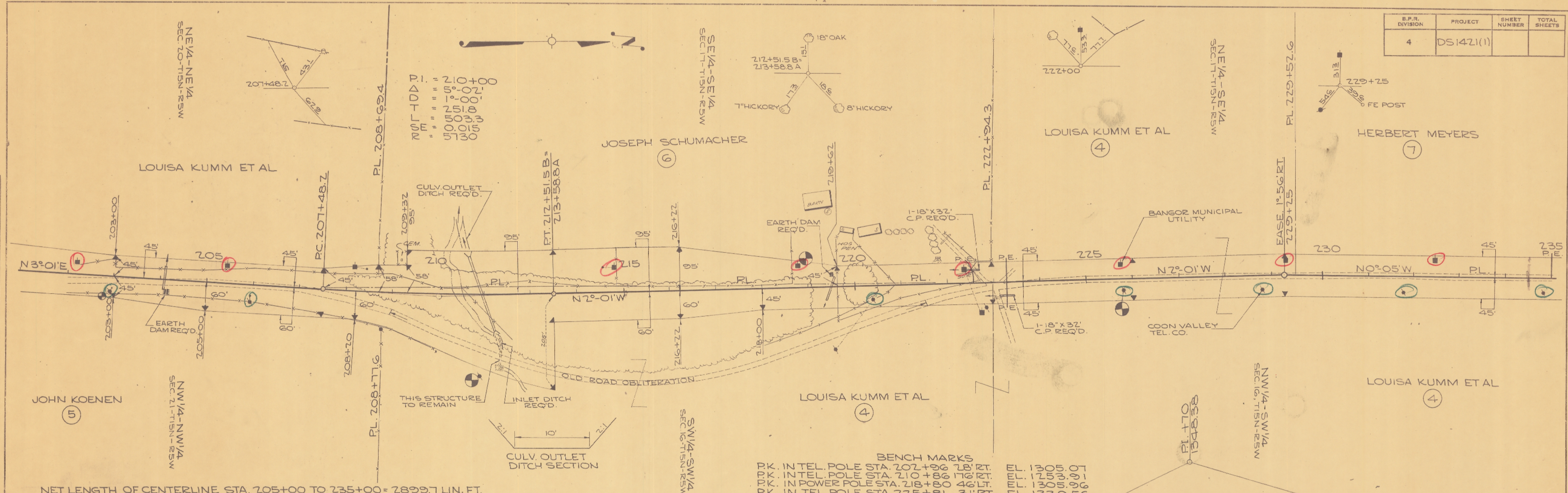




B.P.R. DIVISION	PROJECT	SHEET NUMBER	TOTAL SHEETS
4	DS1421(1)		

PLAN	DATE
BY: R.W.J. CHECKED: E.L.C. NO. 44	6-28

PROFILE	DATE
BY: R.W.J. CHECKED: E.L.C. NO. 44	6-28

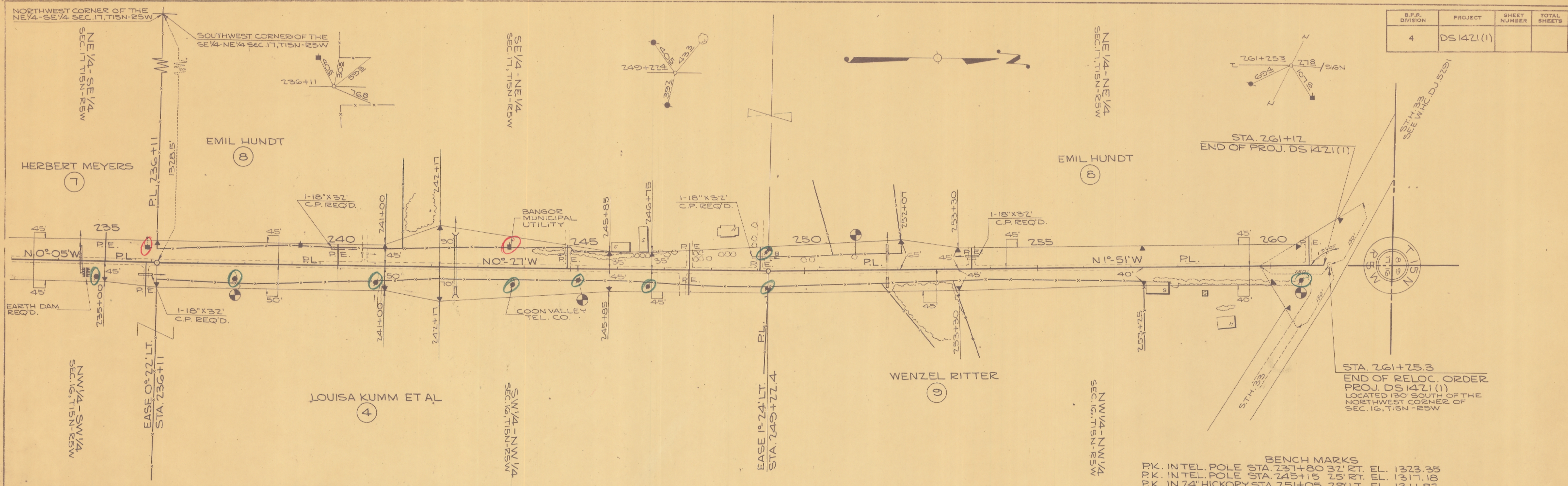




B.P.R. DIVISION	PROJECT	SHEET NUMBER	TOTAL SHEETS
4	DS 1421(1)		

PLAN	DATE
BY R.W.J.	8-3-38
DATE	
BY E.F.E.	
DATE	
BY	
DATE	
BY	
DATE	

PROFILE	DATE
BY R.W.J.	8-3-38
DATE	
BY L.A.B.	
DATE	
BY	
DATE	
BY	
DATE	



NET LENGTH OF CENTERLINE STA. 235+00 TO STA. 261+12 = 2617.0 LIN. FT.

- BENCH MARKS**
- P.K. IN TEL. POLE STA. 231+80 32' RT. EL. 1323.35
  - P.K. IN TEL. POLE STA. 245+15 25' RT. EL. 1317.18
  - P.K. IN 24\"/>

UNCL. = 15,880 C.Y.  
 FILL = 19,383 C.Y. @ 35% SHG.  
 BORROW = 10,294 C.Y.

UNCL. = 2,222 C.Y.  
 FILL = 1,645 C.Y. @ 35% SHG.

