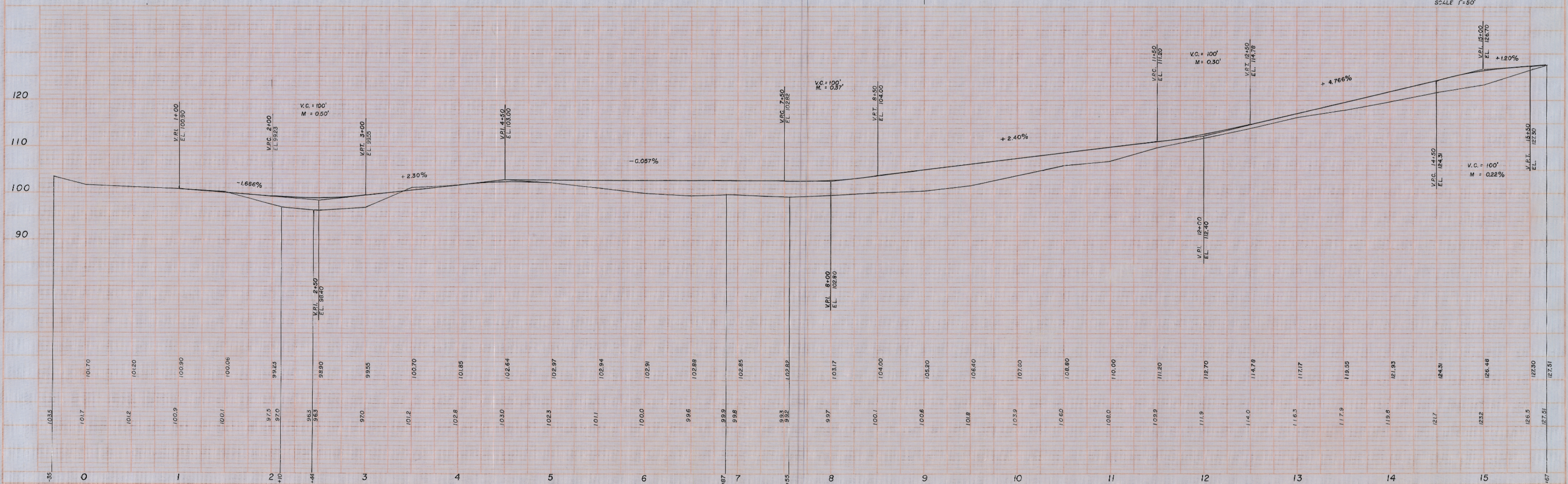
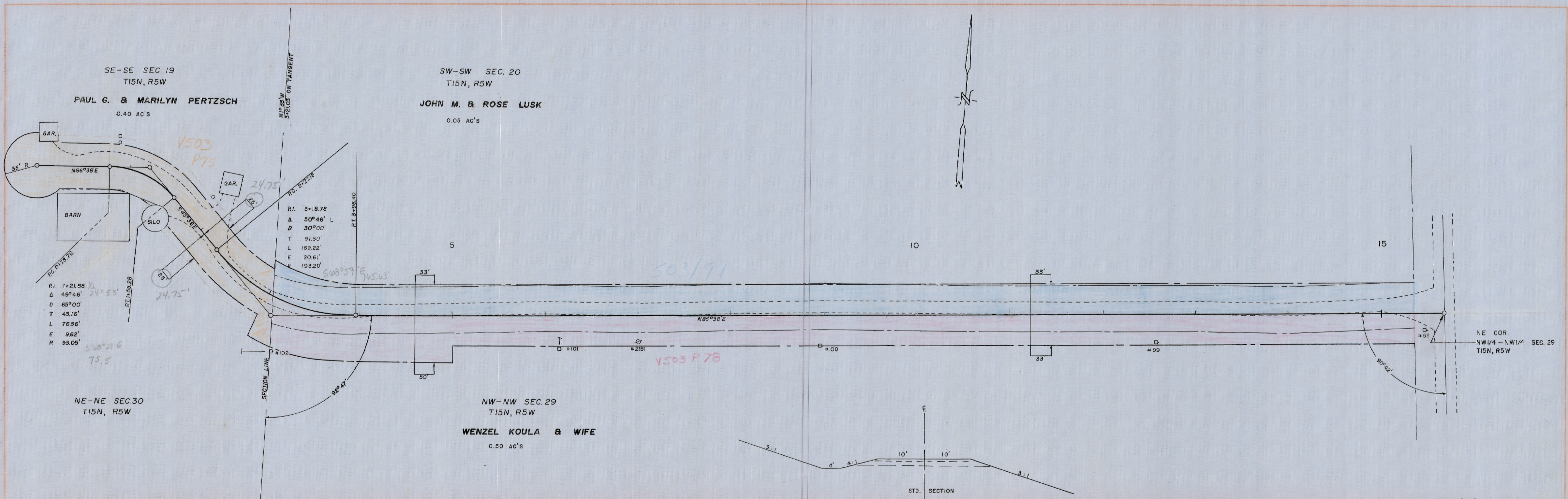


PLAN
 REB. H.G.N. 8571
 NO. 180

PROFILE
 REB. H.G.N. 8571
 NO. 172

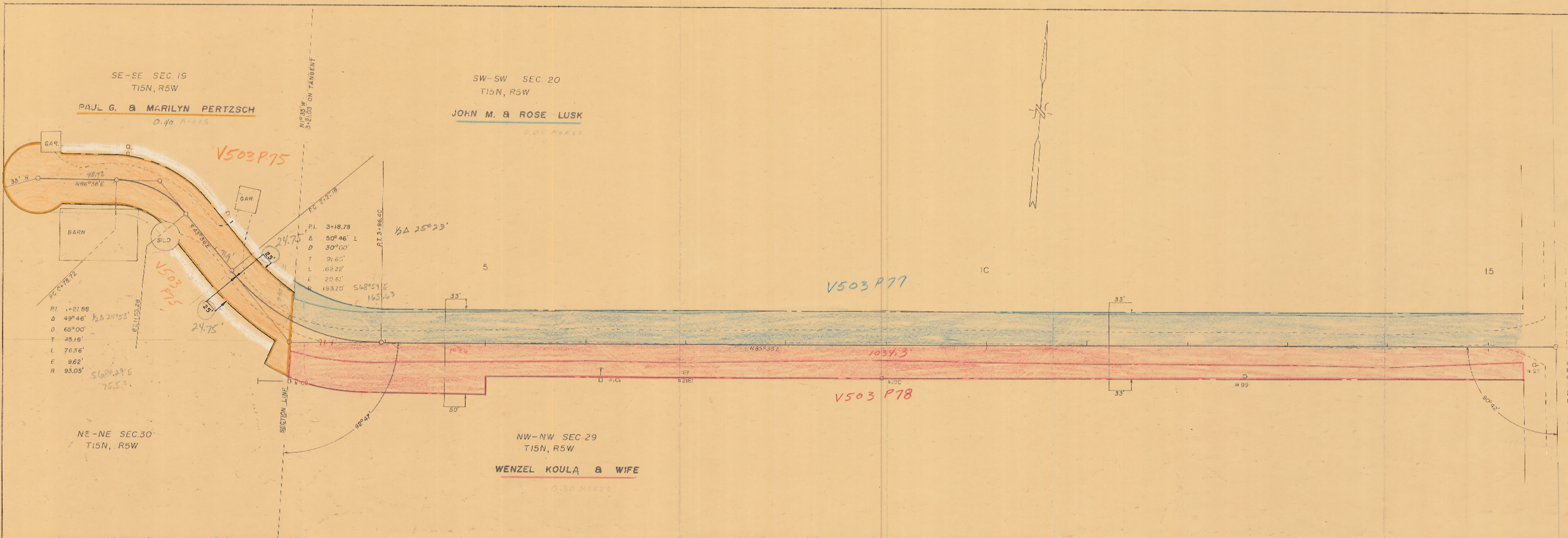


HUNDT ROAD WASHINGTON

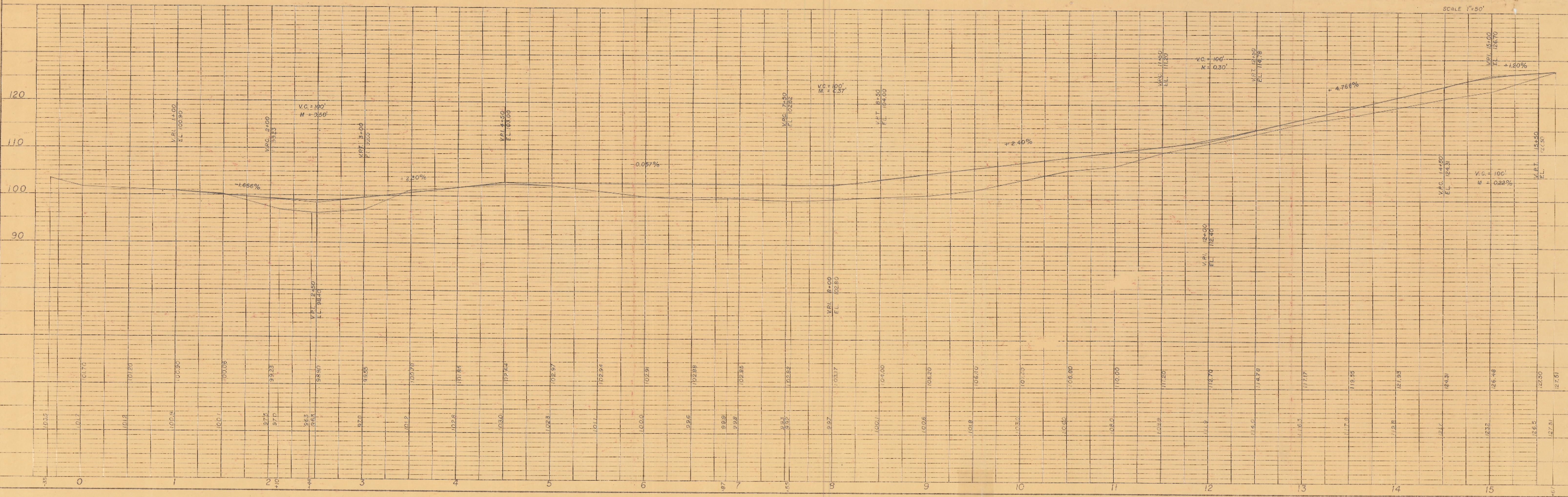
PLAN NO. 455

K&E PLATE 1, PLAN PROFILE
 K&E ENGINEERING CO.
 487012 IMPERIAL

DATE: 8/5/77
 BY: RCB/HGN
 PLAN NO. 455
 CHECKED: HCN
 DATE: 8/5/77
 PLAN NO. 455
 NOTE: WORK PLANNED TO BE CHECKED BY THE ENGINEER.



DATE: 8/5/77
 BY: HCN
 PROFILE NO. 455
 CHECKED: HCN
 DATE: 8/5/77
 PROFILE NO. 455
 NOTE: WORK PLANNED TO BE CHECKED BY THE ENGINEER.



HUNDT ROAD WASHINGTON

K&M PLATE 1, PLAN PROFILE
 ENGINEERS & ARCHITECTS
 487012 IMPERIAL STREET, SUITE 100, LOS ANGELES, CA 90004

PLAN NO. 455