

SCHEDULE OF LANDS & INTERESTS REQUIRED

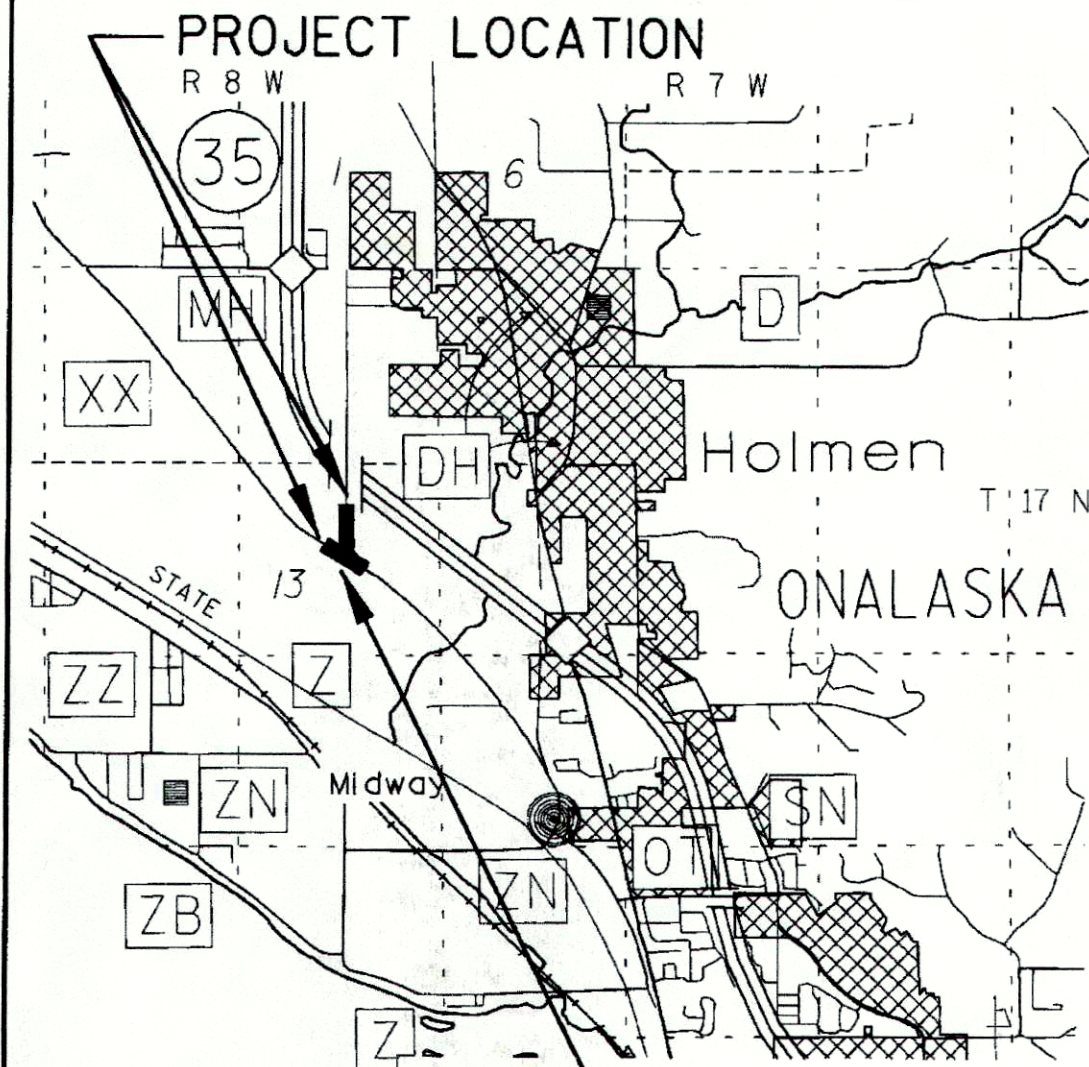
OWNER'S NAMES ARE SHOWN FOR REFERENCE PURPOSES ONLY AND ARE SUBJECT TO CHANGE PRIOR TO THE TRANSFER OF LAND INTERESTS TO THE DEPARTMENT.

TRANSPORTATION PROJECT PLAT NO: 2005-115 - 4.0

THAT PART OF THE SE 1/4 - NW 1/4 AND THE SW 1/4 - NE 1/4 AND THE NW 1/4 - SE 1/4 OF SECTION 13, TOWNSHIP 17 NORTH, RANGE 8 WEST, TOWN OF ONALASKA, LACROSSE COUNTY, WISCONSIN.

RELOCATION ORDER BRIGGS ROAD, CTH XX - BRIGGS ROAD, LACROSSE COUNTY

Table with columns: PARCEL NUMBER, OWNERS, INTEREST REQUIRED, R/W ACRES REQUIRED (NEW, EXISTING, TOTAL), TLE ACRES, PLE/HE ACRES. Includes parcels 1-10 and 20.



SHEET LOCATION

NOTES:

COORDINATES AND BEARINGS SHOWN ON THIS PLAT ARE REFERENCED TO THE WISCONSIN COUNTY COORDINATE SYSTEM, LACROSSE COUNTY ZONE, NAD83 (1991) ADJUSTMENT. THE COORDINATES SHOWN ARE GRID COORDINATES AND ARE TO BE USED AS GRID OR GROUND VALUES ON THIS PLAT.

RIGHT-OF-WAY MONUMENTS ARE TYPE 2 AND WILL BE PLACED PRIOR TO THE COMPLETION OF THE PROJECT.

RIGHT-OF-WAY BOUNDARIES ARE DEFINED WITH COURSES OF THE PERIMETER OF THE HIGHWAY LANDS REFERENCED TO THE U.S. PUBLIC LAND SURVEY SYSTEM OR OTHER "SURVEYS OF PUBLIC RECORD".

PROPERTY LINES SHOWN ON THIS PLAT ARE DRAWN FROM DATA DERIVED FROM MAPS AND DOCUMENTS OF PUBLIC RECORD AND/OR EXISTING OCCUPATIONAL LINES. THIS PLAT MAY NOT BE A TRUE REPRESENTATION OF EXISTING PROPERTY LINES, EXCLUDING RIGHT-OF-WAY LINES, AND SHOULD NOT BE USED AS A SUBSTITUTE FOR AN ACCURATE FIELD SURVEY.

BASIS OF EXISTING R/W - PROJECT 1631-1-21 (2000)

A TEMPORARY LIMITED EASEMENT (TLE) IS A RIGHT FOR CONSTRUCTION PURPOSES, AS DEFINED HEREIN, INCLUDING THE RIGHT TO OPERATE NECESSARY EQUIPMENT THEREON AND THE RIGHT OF INGRESS AND EGRESS, AS LONG AS REQUIRED FOR SUCH PUBLIC PURPOSE, INCLUDING THE RIGHT TO PRESERVE, PROTECT, REMOVE, OR PLANT THEREON ANY VEGETATION THAT THE HIGHWAY AUTHORITIES MAY DEEM NECESSARY OR DESIRABLE. ALL TLEs ARE TO TERMINATE ON JANUARY 1, 2010 OR THE DATE THE CONSTRUCTION OF THIS PROJECT IS COMPLETED, WHICHEVER OCCURS FIRST.

A PERMANENT LIMITED EASEMENT (PLE) IS A RIGHT FOR CONSTRUCTION AND MAINTENANCE PURPOSES, AS DEFINED HEREIN, INCLUDING THE RIGHT TO OPERATE NECESSARY EQUIPMENT THEREON AND THE RIGHT OF INGRESS AND EGRESS, AS LONG AS REQUIRED FOR SUCH PUBLIC PURPOSE, INCLUDING THE RIGHT TO PRESERVE, PROTECT, REMOVE, OR PLANT THEREON ANY VEGETATION THAT THE HIGHWAY AUTHORITIES MAY DEEM NECESSARY OR DESIRABLE. BUT WITHOUT PREJUDICE TO THE OWNER'S RIGHT TO MAKE OR CONSTRUCT IMPROVEMENT ON SAID LANDS OR TO FLATTEN THE SLOPES, PROVIDING SAID ACTIVITIES WILL NOT IMPAIR OR OTHERWISE ADVERSELY AFFECT THE HIGHWAY FACILITIES.

CONVENTIONAL ABBREVIATIONS

Table of conventional abbreviations for survey symbols, including Access Point, Access Rights, Acres, and various easement types.

CURVE DATA

Table of curve data including Long Chord, Long Chord Bearing, Radius, Degree of Curve, Central Angle or Delta, Length of Curve, and Tangent.

CONVENTIONAL SYMBOLS

Table of conventional symbols for proposed R/W lines, existing H.E. lines, property lines, lot & tie lines, slope intercepts, corporate limits, and various easements.

CONVENTIONAL UTILITY SYMBOLS

Table of conventional utility symbols for Water, Gas, Telephone, Overhead, Transmission Lines, Electric, Cable Television, Fiber Optic, Sanitary Sewer, Storm Sewer, Power Pole, Telephone Pole, Telephone Pedestal, and Electric Tower.

COURSE TABLE with columns: COURSE, BEARING, DISTANCE. Lists courses from 451-A to 464-P.

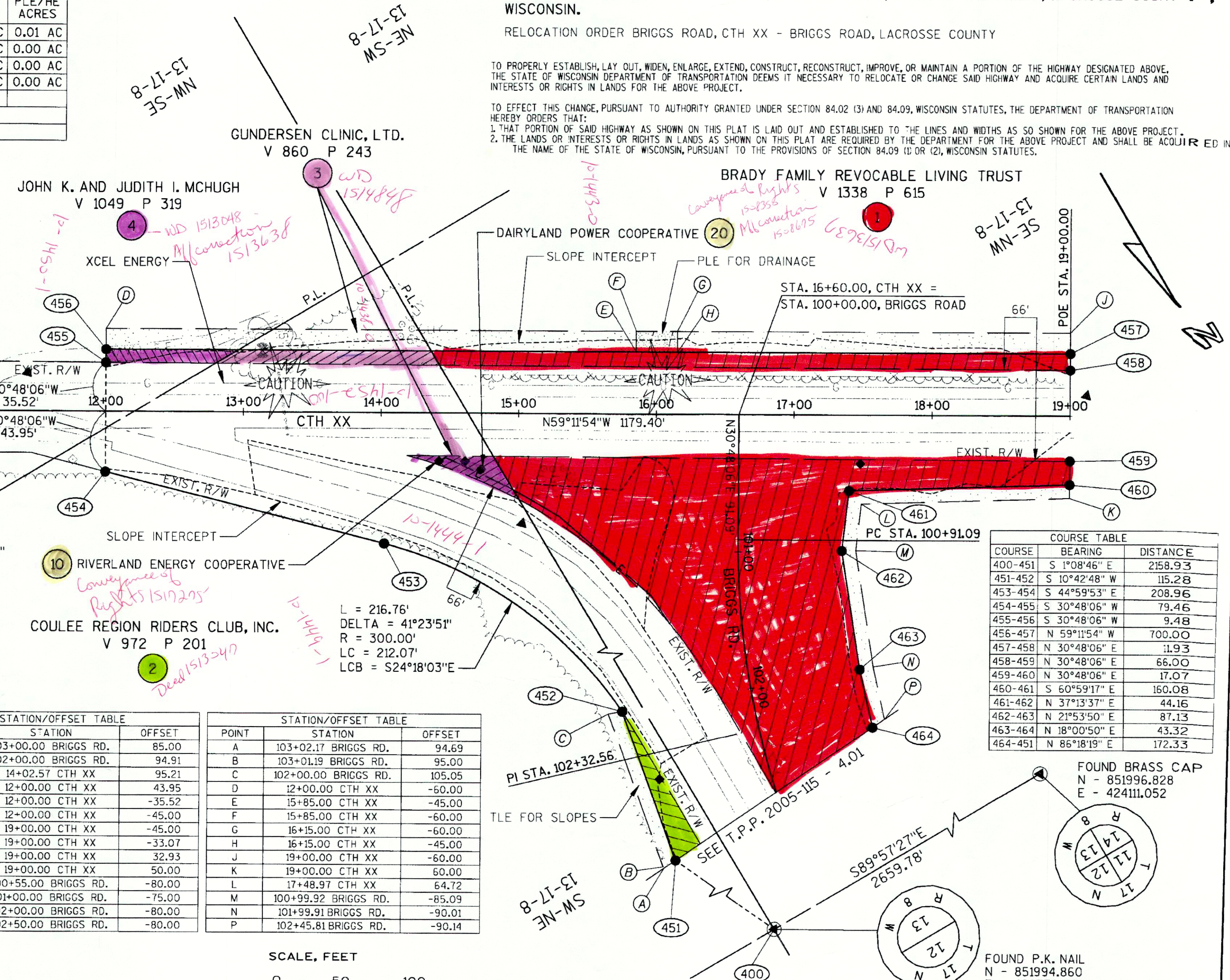
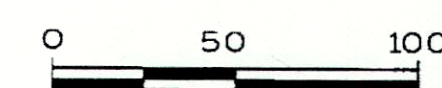
CURVE DATA BRIGGS ROAD

PI 102+32.56, N = 849779.61, E = 426729.08, DELTA = 26°32'09", D = 9°32'57.47", T = 141.48', L = 277.88', R = 600.00', LC = 275.40', LCB = N17°32'02"E

STATION/OFFSET TABLE for BRIGGS RD. with columns: POINT, STATION, OFFSET. Lists points 451 through 464.

STATION/OFFSET TABLE for BRIGGS RD. with columns: POINT, STATION, OFFSET. Lists points A through P.

SCALE, FEET



TO PROPERLY ESTABLISH, LAY OUT, WIDEN, ENLARGE, EXTEND, CONSTRUCT, RECONSTRUCT, IMPROVE, OR MAINTAIN A PORTION OF THE HIGHWAY DESIGNATED ABOVE, THE STATE OF WISCONSIN DEPARTMENT OF TRANSPORTATION DEEMS IT NECESSARY TO RELOCATE OR CHANGE SAID HIGHWAY AND ACQUIRE CERTAIN LANDS AND INTERESTS OR RIGHTS IN LANDS FOR THE ABOVE PROJECT.

TO EFFECT THIS CHANGE, PURSUANT TO AUTHORITY GRANTED UNDER SECTION 84.02 (3) AND 84.09, WISCONSIN STATUTES, THE DEPARTMENT OF TRANSPORTATION HEREBY ORDERS THAT: 1. THAT PORTION OF SAID HIGHWAY AS SHOWN ON THIS PLAT IS LAID OUT AND ESTABLISHED TO THE LINES AND WIDTHS AS SO SHOWN FOR THE ABOVE PROJECT. 2. THE LANDS OR INTERESTS OR RIGHTS IN LANDS AS SHOWN ON THIS PLAT ARE REQUIRED BY THE DEPARTMENT FOR THE ABOVE PROJECT AND SHALL BE ACQUIRED IN THE NAME OF THE STATE OF WISCONSIN, PURSUANT TO THE PROVISIONS OF SECTION 84.09 (1) OR (2), WISCONSIN STATUTES.

FAA CONSULTING ENGINEERS logo and certification text: JOHN T. MUELLER, REGISTERED LAND SURVEYOR, HEREBY CERTIFY THAT IN FULL COMPLIANCE WITH THE PROVISIONS OF SECTION 84.095 OF THE WISCONSIN STATUTES AND UNDER THE DIRECTION OF THE DEPARTMENT, I HAVE SURVEYED AND MAPPED TRANSPORTATION PROJECT PLAT 2005-115 - 4.02 AND THAT SUCH PLAT CORRECTLY REPRESENTS ALL EXTERIOR BOUNDARIES OF THE SURVEYED LAND.

RESERVED FOR REGISTER OF DEEDS PROJECT NUMBER AMENDMENT NO: ACCEPTED FOR RECORDING AND FILING IN THE OFFICE OF THE REGISTER OF DEEDS IN LACROSSE COUNTY, WISCONSIN AT 2:49 PM on Mon, 13, 2008 AS DOCUMENT # 1497171 AND FILED IN TPP CAB 20A SIGNATURE: Cheryl A. McBride REGISTER OF DEEDS

103