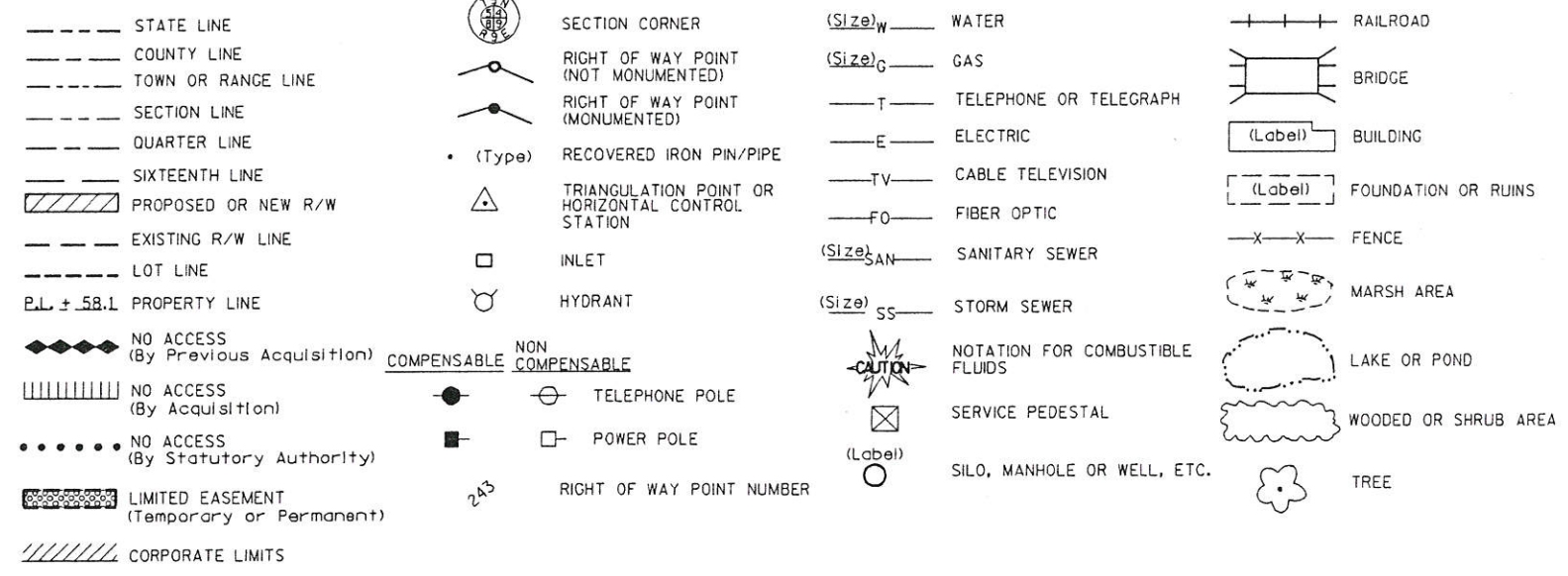


rec'd 12/1/08 JB

R/W PROJECT NUMBER 5991-02-45	SHEET NUMBER 4.01	TOTAL SHEETS 2
FEDERAL PROJECT NUMBER		
PLAT OF RIGHT-OF-WAY REQUIRED FOR OAK AVENUE, CITY OF ONALASKA DOMKEE LANE - ASH STREET		
OAK AVENUE		LACROSSE COUNTY
CONSTRUCTION PROJECT NUMBER 5991-02-45		

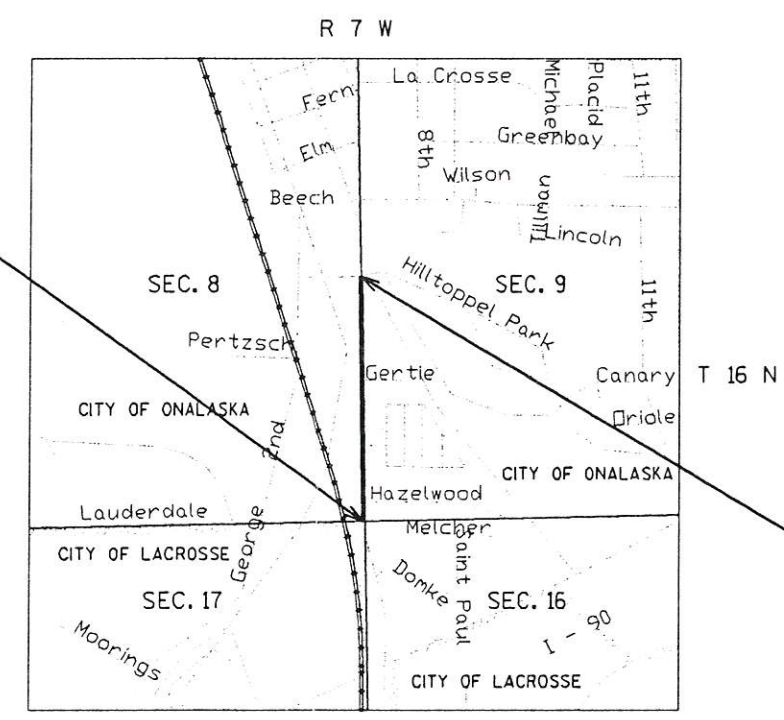
CONVENTIONAL SIGNS AND ABBREVIATIONS

- A.P. ACCESS POINT
- AC ACRES
- AG AGRICULTURAL
- ALUM. ALUMINUM
- ANT ANTENNA
- B. BARN
- C. CENTERLINE
- CONC CONCRETE
- COR. CORNER
- C.S.M. CERTIFIED SURVEY MAP
- C.T.H. COUNTY TRUNK HIGHWAY
- DOC. DOCUMENT
- EASE. EASEMENT
- ET.AL. AND OTHERS
- FDN FOUNDATION
- FE FIELD ENTRANCE
- FRL. FRACTIONAL
- G GARAGE
- GP GAS PUMPS
- GRAV GRAVEL
- GV GAS
- HSE HOUSE
- IP IRON PIPE OR PIN
- L LENGTH OF CURVE
- LC LONG CHORD OR LAND CONTRACT
- LCB LONG CHORD BEARING
- LT LEFT
- MH MANHOLE
- MON. MONUMENT
- O.L. OUTLOT
- P. PAGE
- PC POINT OF CURVATURE
- PE PRIVATE ENTRANCE
- PI POINT OF INTERSECTION
- PK PARKER-KALON FASTENER
- P.L. PROPERTY LINE
- P.L.E. PERMANENT LIMITED EASEMENT
- PT POINT OF TANGENCY
- R RADIUS OR RANGE
- R.D.E. RESTRICTED DEVELOPMENT EASEMENT
- REM. REMAINING
- R REFERENCE LINE
- RT RIGHT
- R/W RIGHT OF WAY
- S SHED
- SEC. SECTION
- SEPV SEPTIC VENT
- S.T.H. STATE TRUNK HIGHWAY
- STA. STATION
- T TANGENT LENGTH OF CURVE OR TOWN
- TAV TAVERN
- T.I. TEMPORARY INTEREST
- U.S.H. UNITED STATES HIGHWAY
- V. VOLUME
- W WALL
- X EAST COORDINATE (GRID)
- Y NORTH COORDINATE (GRID)
- N NORTH COORDINATE (GROUND) OR NORTH
- E EAST COORDINATE (GROUND), EAST OR EXTERNAL
- Δ CENTRAL ANGLE OR DELTA



BEGIN RELOCATION ORDER
STA. 128+89.87

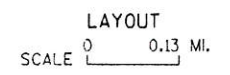
Y= 152501.164
X= 450942.181
191.079 FEET SOUTH AND 23.780 FEET
EAST OF THE SOUTHWEST CORNER OF
SECTION 9, T16N, R7W



END RELOCATION ORDER
STA. 147+19.96

Y= 154330.901
X= 450906.646
1000.882 FEET SOUTH AND 40.407 FEET
EAST OF THE WEST 1/4 CORNER OF
SECTION 9, T16N, R7W

NOTES:
COORDINATES AND BEARINGS ON THIS PLAT ARE ORIENTED TO THE WISCONSIN COUNTY COORDINATE SYSTEM, LACROSSE COUNTY (ENGLISH) NAD 83, 1991 ADJUSTMENT. ALL DISTANCES ARE GROUND LENGTH.
RIGHT OF WAY MONUMENTS ARE TYPE-2 (5/8" X 24" REINFORCEMENT BAR WEIGHING 1.04 LB/FT) AND ARE PLACED PRIOR TO OR AT THE TIME OF LAND TITLE TRANSFER.
RIGHT OF WAY BOUNDARIES ARE DEFINED WITH COURSES OF THE PERIMETER OF THE HIGHWAY LANDS REFERENCED TO THE U.S. PUBLIC LAND SURVEY OR OTHER SURVEYS OF PUBLIC RECORD.
SECTION CORNER MONUMENT TYPE AND COORDINATE VALUE INFORMATION SHOWN ON DETAIL SHEETS WAS PROVIDED BY OTHERS.



TOTAL NET LENGTH OF CENTERLINE = 0.35 MI.

ORIGINAL PLANS PREPARED BY

11/10/08
(Date) (Signature)

REVISION DATE

ACCEPTED FOR

CITY ONALASKA

11-26-08 CITY ENGINEER
(Date) (Signature & Title of Official)

105

SCHEDULE OF LANDS & INTERESTS REQUIRED

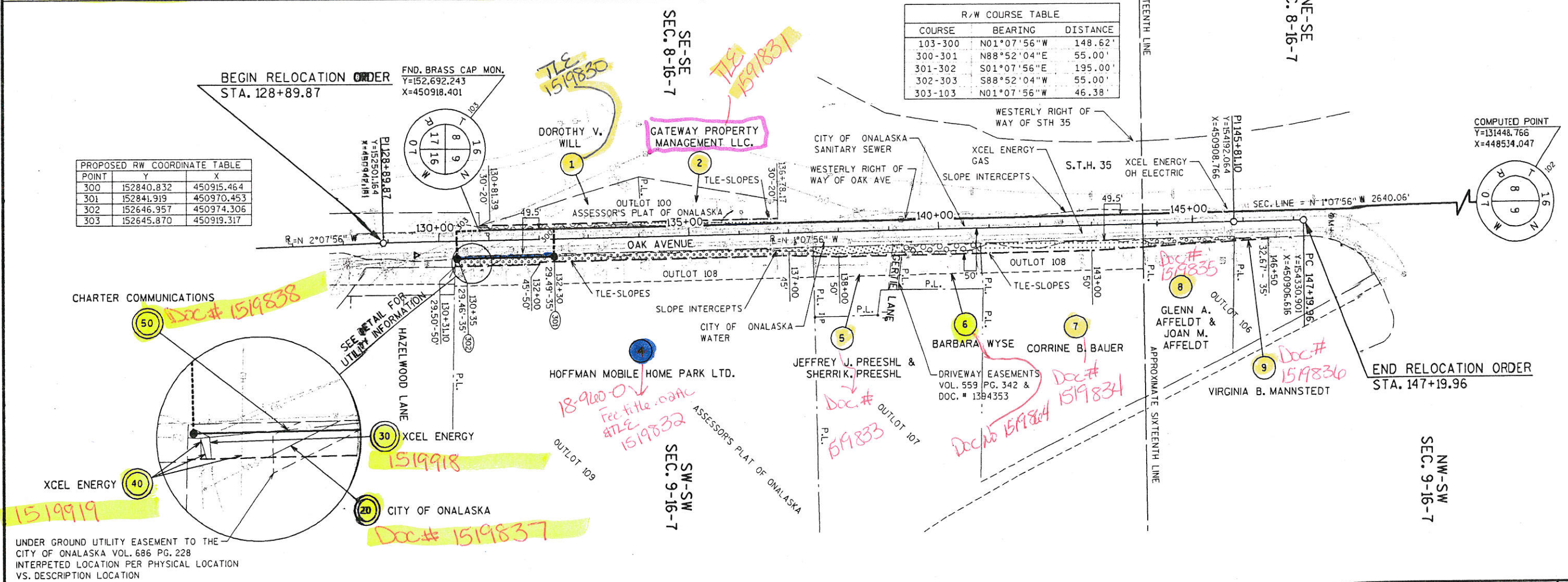
AREAS SHOWN IN THE TOTAL ACRES COLUMN MAY BE APPROXIMATE AND ARE DERIVED FROM TAX ROLLS OR OTHER AVAILABLE SOURCES AND MAY NOT INCLUDE LANDS OF THE OWNER WHICH ARE NOT CONTIGUOUS TO THE AREA TO BE ACQUIRED.

PARCEL NUMBER	OWNER (S)	INTEREST REQUIRED	TOTAL ACRES	R/W ACRES REQUIRED OR S.F.			TOTAL ACRES REM.	T.L.E. ACRES
				NEW	EXISTING	TOTAL		
1	DOROTHY V. WILL Doc# 1519830	TLE	0.43	-	-	-	0.43	0.08
2	GATEWAY PROPERTY MANAGEMENT LLC. Doc# 1519831	TLE	0.73	-	-	-	0.73	0.06
4	HOFFMAN MOBILE HOME PARK LTD. Doc# 1519832	FEE/TLE	17.28	0.02	-	0.02	17.26	0.25
5	JEFFREY J. PREESHL & SHERRI K. PREESHL Doc# 1519833	TLE	0.50	-	-	-	0.50	0.08
6	BARBARA WYSE Doc 1519804	TLE	0.34	-	-	-	0.34	0.07
7	CORRINE B. BAUER Doc # 1519834	TLE	2.60	-	-	-	2.60	0.15
8	GLEN A. AFFELDT & JOAN M. AFFELDT Doc# 1519835	TLE	1.03	-	-	-	1.03	0.05
9	VIRGINIA B. MANNSTEDT Doc# 1519836	TLE	0.94	-	-	-	0.94	0.01
20	CITY OF ONALASKA (SANITARY SEWER) Doc # 1519837	RELEASE OF RIGHTS						
30	XCEL ENERGY (GAS) Doc # 1519918	RELEASE OF RIGHTS						
40	XCEL ENERGY (ELECTRIC) Doc # 1519919	RELEASE OF RIGHTS						
50	CHARTER COMMUNICATIONS (FIBER OPTIC) Doc# 1519838	RELEASE OF RIGHTS						



COURSE	BEARING	DISTANCE
103-300	N01°07'56"W	148.62'
300-301	N88°52'04"E	55.00'
301-302	S01°07'56"E	195.00'
302-303	S88°52'04"W	55.00'
303-103	N01°07'56"W	46.38'

POINT	Y	X
300	152840.832	450915.464
301	152841.919	450970.453
302	152646.957	450974.306
303	152645.870	450919.317



REVISION DATE	DATE	SCALE, FEET 0 100 200	HWY: OAK AVENUE	PLAT SHEET NO: 4.02
	GRID FACTOR		COUNTY: LACROSSE	PS&E SHEET
			CONSTRUCTION PROJECT NUMBER 5991-02-45	E