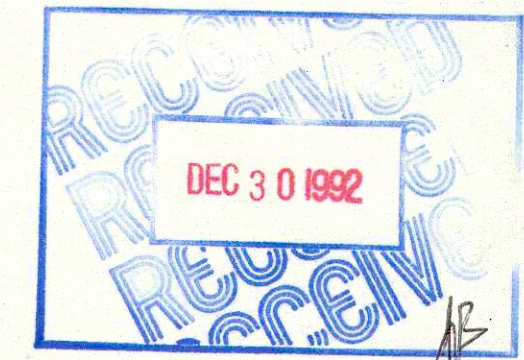


R/W PROJECT NUMBER 7067-01-21	SHEET NUMBER	TOTAL SHEETS
FEDERAL PROJECT NUMBER M 4201 (005)	4.0	6
PLAT OF RIGHT OF WAY REQUIRED FOR C.T.H. "SN" ONALASKA-HOLMEN ROAD LACROSSE COUNTY		

PLANS PREPARED BY: WESTBROOK ASSOCIATES, INC.
PLAIN, WI 53577



Conventional Signs and Abbreviations

STATE LINE	RAILROAD - SMALL SCALE
COUNTY LINE	RAILROAD - LARGE SCALE
TOWN OR RANGE LINE	BRIDGE
SECTION LINE	CULVERT (End Treatment may be Shown)
QUARTER LINE	CEMETERY
SIXTEENTH LINE	STORAGE TANK
PROPOSED OR NEW LINE	SILO, MANHOLE, OR WELL, ETC.
EXISTING R/W LINE	BUILDING
LOT LINE	FOUNDATION OR RUINS
PROPERTY LINE	FENCE
NO ACCESS (By Acquisition)	GUARD RAIL
NO ACCESS (By Statutory Authority)	GAS PUMPS
LIMITED HIGHWAY EASEMENT	TRANSMISSION TOWER AND LINE
CORPORATE LIMITS	TELEPHONE POLE
SURVEY LINE	POWER POLE
RIGHT OF WAY POINT	HYDRANT
RIGHT OF WAY MONUMENT (Type)	UNDERGROUND UTILITY SYMBOLS
TRIANGULATION POINT OR HORIZONTAL CONTROL POINT	WATER
PAVED ROAD	STORM SEWER
UNPAVED ROAD	SANITARY SEWER
DRIVEWAY	TELEPHONE OR TELEGRAPH
	ELECTRIC



0 1 2
SCALE: MILES

STANDARD ABBREVIATIONS

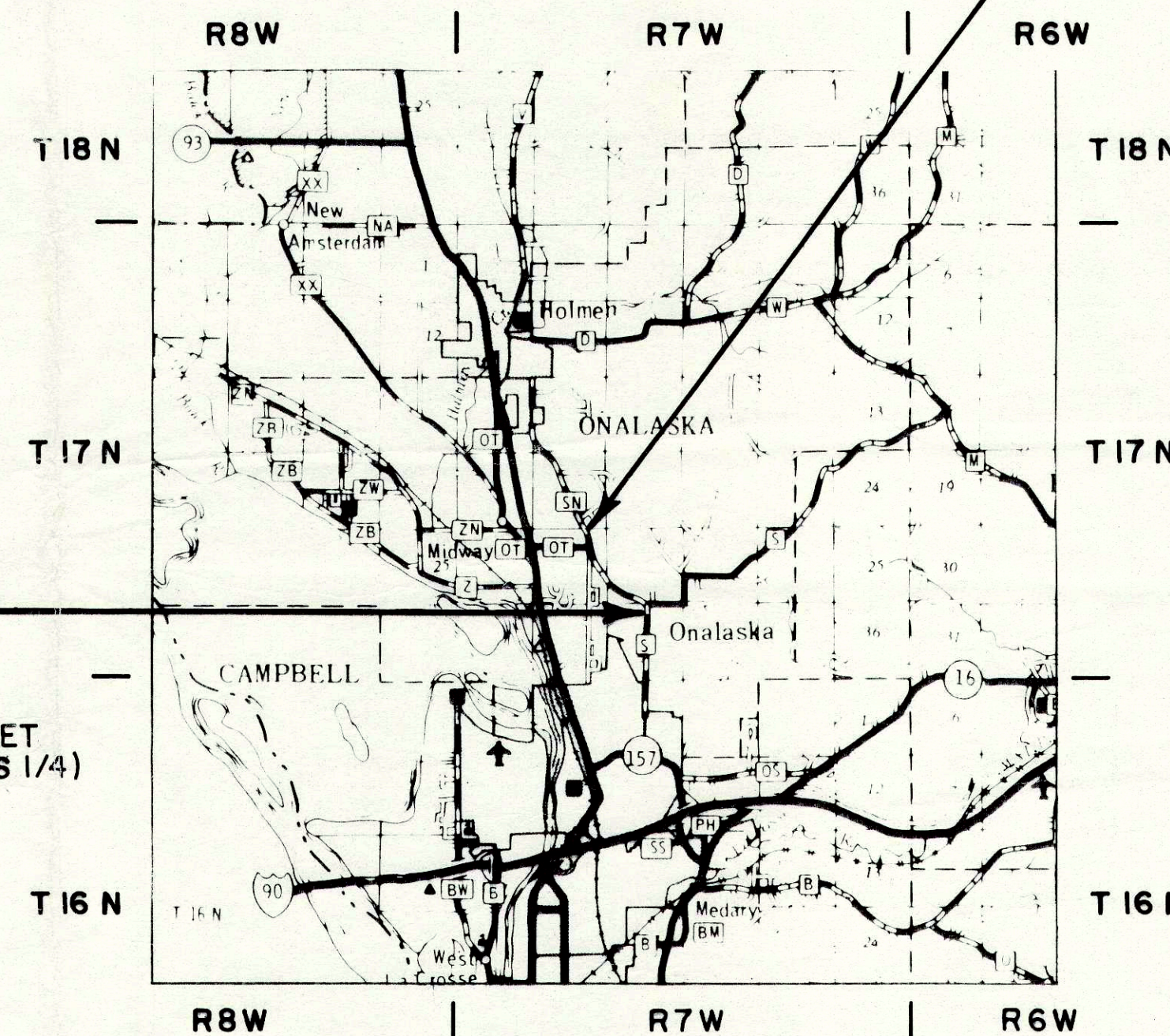
ACRE	AC.	POINT ON TANGENT	P.O.T.
AHEAD	AH.	QUITCLAIM DEED	Q.C.D.
BEGIN	BEG.	RADIUS	R
BACK	BK.	REFERENCE LINE	R, R, R/L
BLOCK	BLK.	REMAINING	REM.
CAST IRON PIPE	C.I.P.	RIGHT-OF-WAY	R/W
CENTER LINE	C, CL, C/L	ROAD	RD.
CENTRAL ANGLE OR DELTA	Δ	SECTION	SEC.
COUNTY	CO.	SOUTH	S.
COUNTY TRUNK HIGHWAY	C.T.H.	SQUARE FEET	SQ. FT. OR S.F.
DEED	(D.)	STATE TRUNK HIGHWAY	S.T.H.
DEGREE OF CURVE	D.	STATION	STA.
EAST	E	SUBDIVISION	SUBD.
FOOT	FT.	SURVEY LINE	S _L OR S/L
GRID NORTH	G.N.	TANGENT	T.
IRON PIPE OR PIN	I.P.	TOWN	T. OR TN.
LAND CONTRACT	L.C.	TRANSIT LINE	T _L OR T/L
LENGTH (OF CURVE)	L.	UNDERGROUND (CABLE)	U.G.
LIMITED HIGHWAY EASEMENT	L.H.E.	U.S. HIGHWAY	U.S.H.
LONG CHORD OR CURVE	L.C.	WATER VALVE	W.V.
NORTH	N.	WELL	W.
POINT	PT.	WEST	W.
POINT OF CURVATURE	P.C.	EAST GRID COORDINATE	X.
POINT OF INTERSECTION	P.I.	NORTH GRID COORDINATE	Y.
POINT OF REVERSE CURVATURE	P.R.C.		
POINT OF TANGENCY	P.T.		
POINT ON CURVE	P.O.C.		

END RELOCATION ORDER
PROJECT 7067-01-21
STA. 77+28.72

76.59 FEET NORTH AND 0.62 FEET EAST FROM THE NORTHWEST CORNER OF THE SOUTHEAST QUARTER (SE 1/4) OF THE NORTHEAST QUARTER (NE 1/4) OF SECTION 29, T. 17 N., R. 7 W.

BEGIN RELOCATION ORDER
PROJECT 7067-01-21
STA. 12+00.00

471.85 FEET SOUTH AND 11.27 FEET EAST OF THE SOUTH QUARTER (S 1/4) CORNER OF SECTION 28, T. 17 N., R. 7 W. LACROSSE COUNTY



TOTAL NET LENGTH OF CENTERLINE = 1.236 MILES

NOTES

COORDINATES AND BEARINGS ON THIS PLAT ARE ORIENTED TO THE WISCONSIN COORDINATE SYSTEM SOUTH ZONE. ALL PLAT DISTANCES ARE GROUND LENGTH AND MAY BE CONVERTED TO GRID LENGTH BY MULTIPLYING THE DISTANCE BY THE GRID FACTOR PROVIDED ON THE DETAIL SHEETS.

RIGHT OF WAY MONUMENTS ARE TYPE 2 AND ARE PLACED PRIOR TO OR AT THE TIME OF LAND TITLE TRANSFER.

RIGHT OF WAY BOUNDARIES ARE DEFINED WITH COURSES OF THE PERIMETER OF THE HIGHWAY LANDS REFERENCED TO THE U.S. PUBLIC LAND SURVEY OR OTHER SURVEYS OF PUBLIC RECORD.

APPROVED FOR: LACROSSE COUNTY

4-10-85 *Harold Nelson*
DATE COUNTY HIGHWAY COMMISSIONER

REVISION DATE	STATE OF WISCONSIN
9-8-87	DEPARTMENT OF TRANSPORTATION
10-20-88	Approved:
4-12-90	Date 5/16/85 <i>B.J. Muller</i> District Transportation Director
9-24-90	Approved:
11-2-90	Date _____ Director, Bureau of Real Estate
12-9-92	U.S. DEPARTMENT OF TRANSPORTATION FEDERAL HIGHWAY ADMINISTRATION REGION 5 WISCONSIN DIVISION
	Approved:
	Date _____ Division Administrator

12
SEE MEMORANDUM
12A

SCHEDULE OF LANDS & INTERESTS REQUIRED

AREAS SHOWN IN THE TOTAL ACRES COLUMN MAY BE APPROXIMATE AND ARE DERIVED FROM TAX ROLLS OR OTHER AVAILABLE SOURCES AND MAY NOT INCLUDE LANDS OF THE OWNER WHICH ARE NOT CONTIGUOUS TO THE AREA TO BE ACQUIRED.

REVISION DATES
9-9-87
10-20-88
4-12-90
12-09-92

ROUTE C.T.H. "SN"
COUNTY LACROSSE
DATE

R/W PROJECT NUMBER 7067--01-21
SHEET NUMBER 4.1
FEDERAL PROJECT NUMBER M 4201 (005)

PARCEL NUMBER	SHEET NUMBER	OWNER(S)	INTEREST REQUIRED	TOTAL ACRES OR S.F.	R/W ACRES REQUIRED OR S.F.			TOTAL ACRES OR S.F. REM.	T.L.E. ACRES TEMP.
					NEW	EXISTING	TOTAL		
1	4.3	EDWARD W. & LOIS A. WALSH	FEE	0.94	0.02	0.05	0.07	0.87	—
4	4.3	PAUL & JANET NELSON	FEE	6.63	0.34	0.55	0.89	5.74	—
5	4.3-4.5	CEDAR CREEK, LTD.	FEE	103.95	2.10	2.59	4.69	99.26	—
6	4.5	C.C. PARTNERS	FEE	25.36	0.25	0.64	0.89	24.47	—
7	4.5	LELAND SAGE, WILLIAM MOSS, & MICHAEL MARSHALL	FEE	1.47	0.02	—	0.02	1.45	—
8	4.5	THE OAKS CONDOMINIUMS *	FEE	3.60	0.04	—	0.04	3.56	—
9	4.3 - 4.5	TREMPEALEAU ELECTRIC COOP.	RELEASE OF RIGHTS	—	—	—	—	—	—
10	4.4 & 4.5	CENTURY TELEPHONE, INC.	RELEASE OF RIGHTS	—	—	—	—	—	—
11	4.5	NORTHERN STATES POWER (ELECTRIC)	RELEASE OF RIGHTS	—	—	—	—	—	—
12	4.4	DONALD D. & ARDETH P. VAN RIPER	FEE	10.62	0.19	0.40	0.59	10.03	—

* THE OAKS CONDOMINIUMS

RICKEY A. MOODY - UNIT 1
ROBERT A. SMITH - UNIT 2
DOUGLAS W. & MERRI D. SHUPE - UNIT 3
GERALD A. & BARBARA PLUMLEY - UNIT 4
GLEN J. & JUDY MEYER - UNIT 5
DAVID L. NOFFKE - UNIT 6

ALL ABOVE OWNERS HAVING A 1/6 INTEREST IN COMMON ELEMENTS

REVISION DATES
9-8-87
10-20-88
4-12-90
N/C
12-9-92

ROUTE COUNTY DATE
C.T.H. "SN" LACROSSE
NOT TO SCALE

R/W PROJECT NUMBER
7067-01-21
FEDERAL PROJECT NUMBER
M 4201 (005)

SHEET
NUMBER
4.2

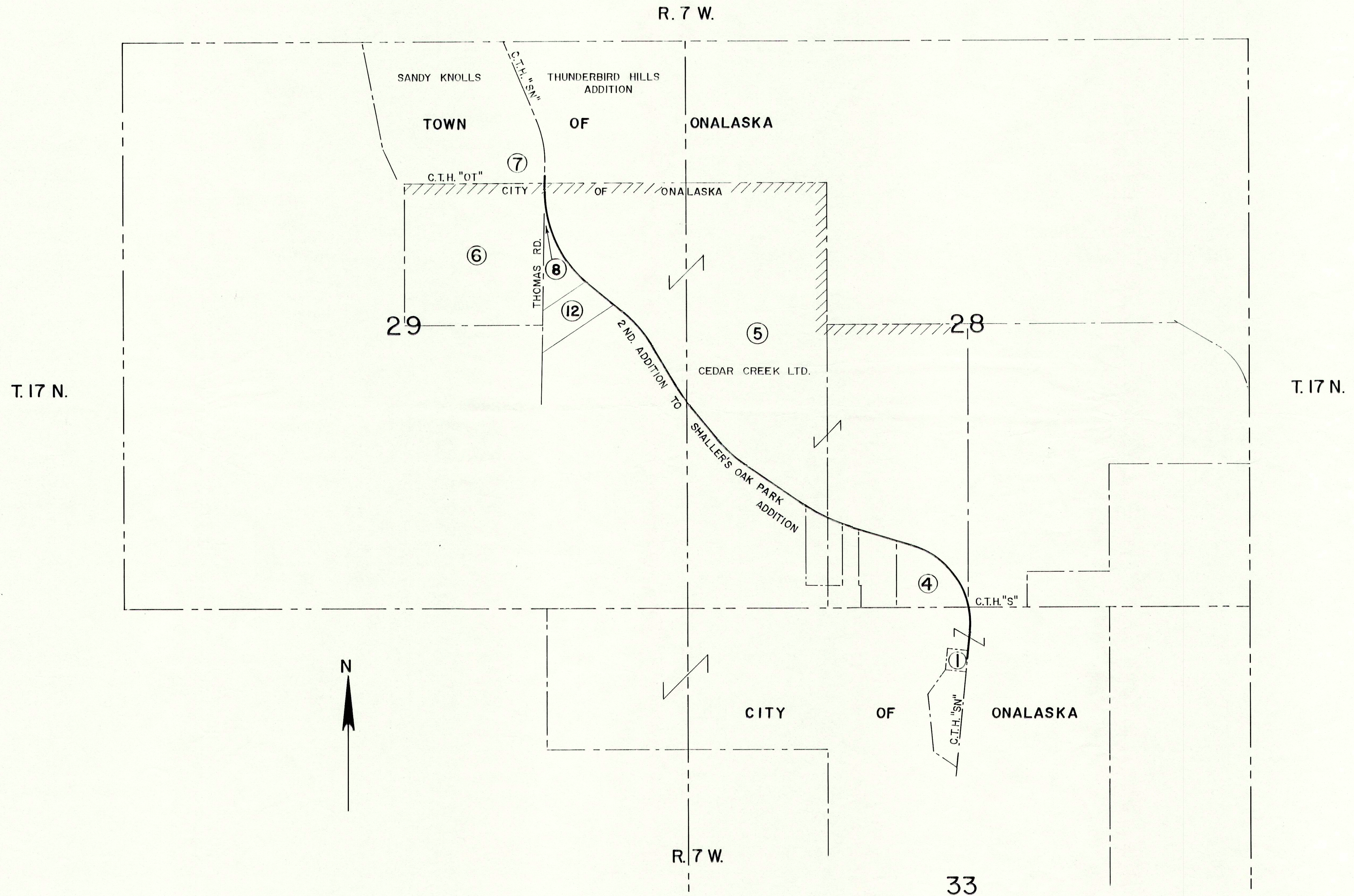


TABLE OF R/W COURSES

ITEM	BEARING	DISTANCE	RADIUS	ARC LENGTH
①	N 85° 25' 00" W	34.00'	—	—
②	N 12° 38' 15" W	104.69'	—	—
③	N 10° 27' 02" E	146.74'	—	—
④	N 4° 56' 34" W	236.31'	713.94'	237.40'
⑤	N 25° 02' 08" W	185.34'	—	—
⑥	N 36° 58' 09" W	183.77'	703.94'	184.30'
⑦	N 69° 47' 31" W	150.10'	1885.11'	150.14'
⑧	S 83° 11' 51" W	100.72'	—	—
⑨	S 1° 11' 35" E	165.85'	823.94'	166.13'
⑩	N 70° 03' 20" W	136.26'	1934.61'	136.28'
⑪	S 0° 10' 46" W	17.76'	—	—

NOT RECOVERED,
LOCATION FROM
COUNTY SURVEYOR'S FILES

REVISION DATE	PROJECT I. D.	SHEET NUMBER	TOTAL SHEETS
9-8-87	7067-01-21	4.3	6
10-20-88 MDG	FEDERAL PROJECT DESIGNATION		
4-12-90 MDG	M 4201 (005)		
12-9-92 MDG	PLAT OF RIGHT-OF-WAY REQUIRED FOR C.T.H. "SN" ONALASKA-HOLMEN ROAD LACROSSE COUNTY		
	DATE		
CONST. PROJECT 7067-01-71			

BEGIN RELOCATION ORDER
PROJECT 7067-01-21
STA. 12+00.00

EDWARD W. & LOIS A. WALSH

471.85 FEET SOUTH AND 11.27 FEET EAST OF THE SOUTH QUARTER (S 1/4) CORNER OF SECTION 28, T.17N., R.7W. LACROSSE COUNTY

CURVE 1 DATA

PI. STA. 20+10.41
R = 716.20'
D = 8° 00' 00"
Δ = 76° 01' 31"
L = 950.32'
T = 559.81'
C = 882.12'
P.C. STA. 14+50.60
P.T. STA. 24+00.92
L.C.B. = N 33° 25' 45" W

SECTION 33 T.17N., R.7W.

SECTION 28 T.17N., R.7W.

SUB-R/W CURVE

R = 713.94'
L = 12.77'
L.C.B. = N 13° 57' 33" W

SUB-R/W CURVE

R = 713.94'
L = 224.63'
L.C. = 223.71'
L.C.B. = N 04° 25' 48" W

R/W CURVE

R = 1951.11'
L = 378.74'
L.C. = 378.14'
L.C.B. = N 62° 40' 11" W

CURVE 2 DATA

PI. STA. 33+87.15
R = 1091.35'
D = 5° 15' 00"
Δ = 13° 04' 32"
L = 249.06'
T = 125.07'
C = 248.52'
P.C. STA. 32+62.08
P.T. STA. 35+11.14
L.C.B. = N 64° 54' 15" W

R/W CURVE

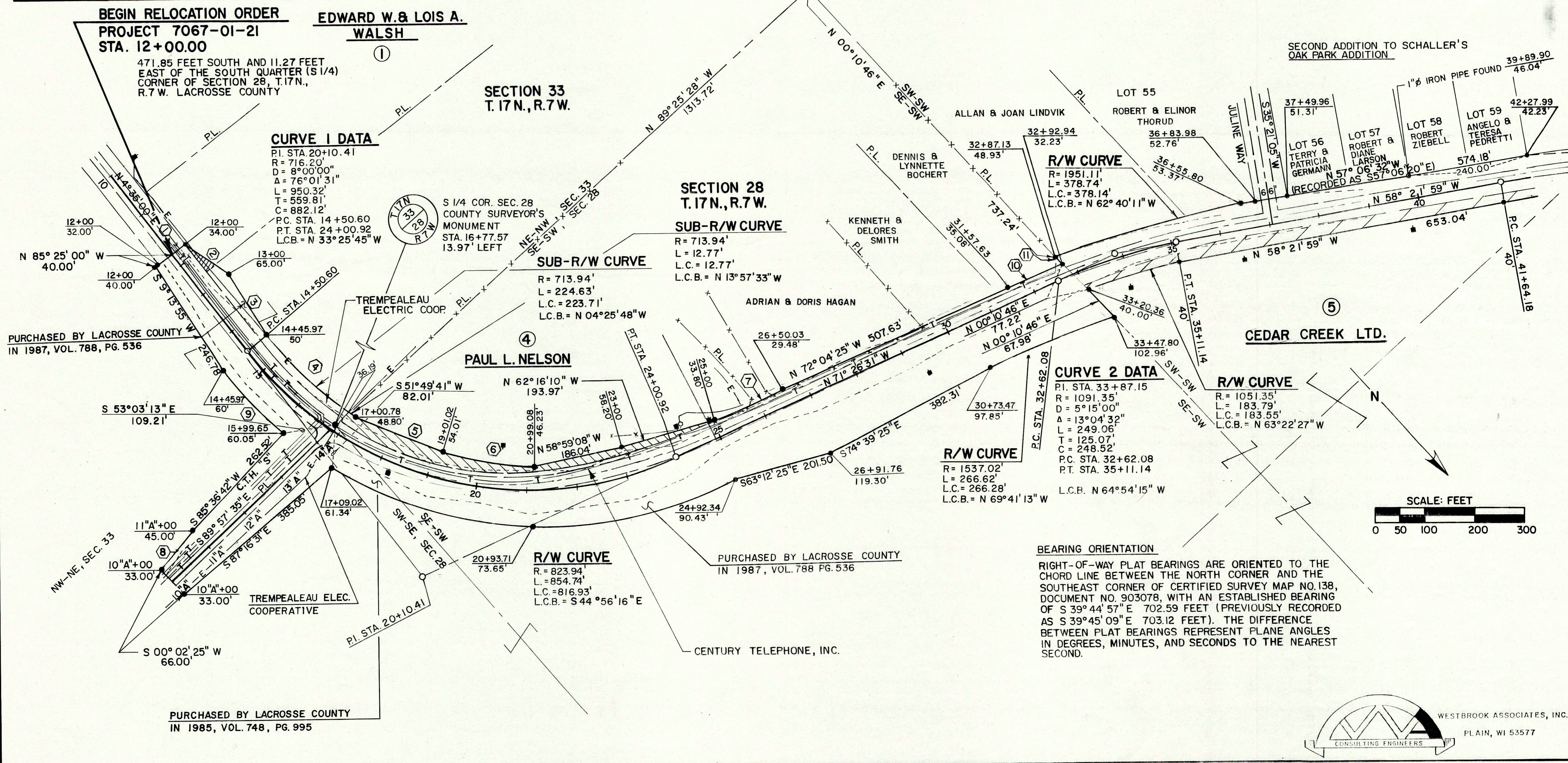
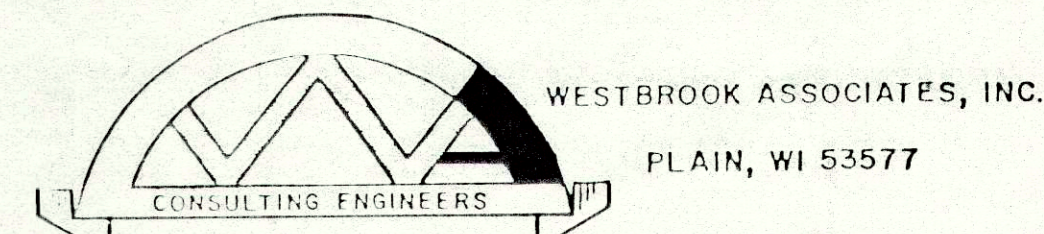
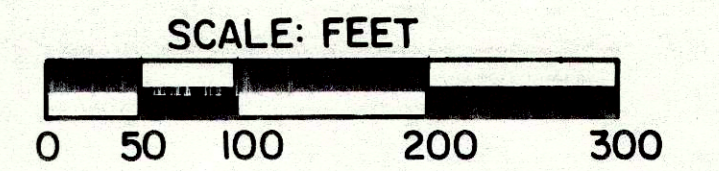
R = 1537.02'
L = 266.62'
L.C. = 266.28'
L.C.B. = N 69° 41' 13" W

R/W CURVE

R = 823.94'
L = 854.74'
L.C. = 816.93'
L.C.B. = S 44° 56' 16" E

BEARING ORIENTATION

RIGHT-OF-WAY PLAT BEARINGS ARE ORIENTED TO THE CHORD LINE BETWEEN THE NORTH CORNER AND THE SOUTHEAST CORNER OF CERTIFIED SURVEY MAP NO. 138, DOCUMENT NO. 903078, WITH AN ESTABLISHED BEARING OF S 39° 44' 57" E 702.59 FEET (PREVIOUSLY RECORDED AS S 39° 45' 09" E 703.12 FEET). THE DIFFERENCE BETWEEN PLAT BEARINGS REPRESENT PLANE ANGLES IN DEGREES, MINUTES, AND SECONDS TO THE NEAREST SECOND.



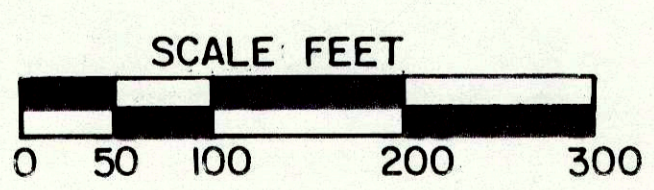
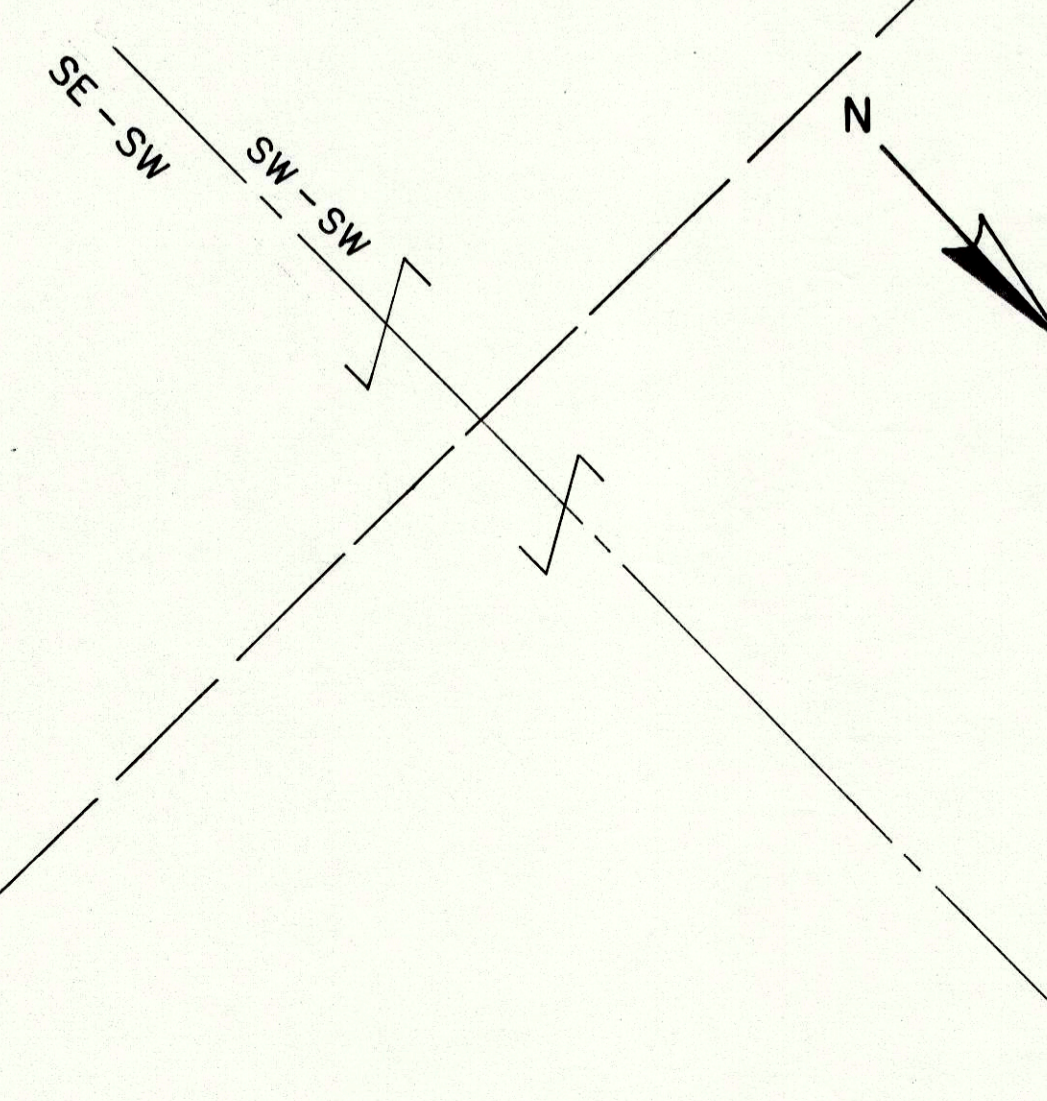
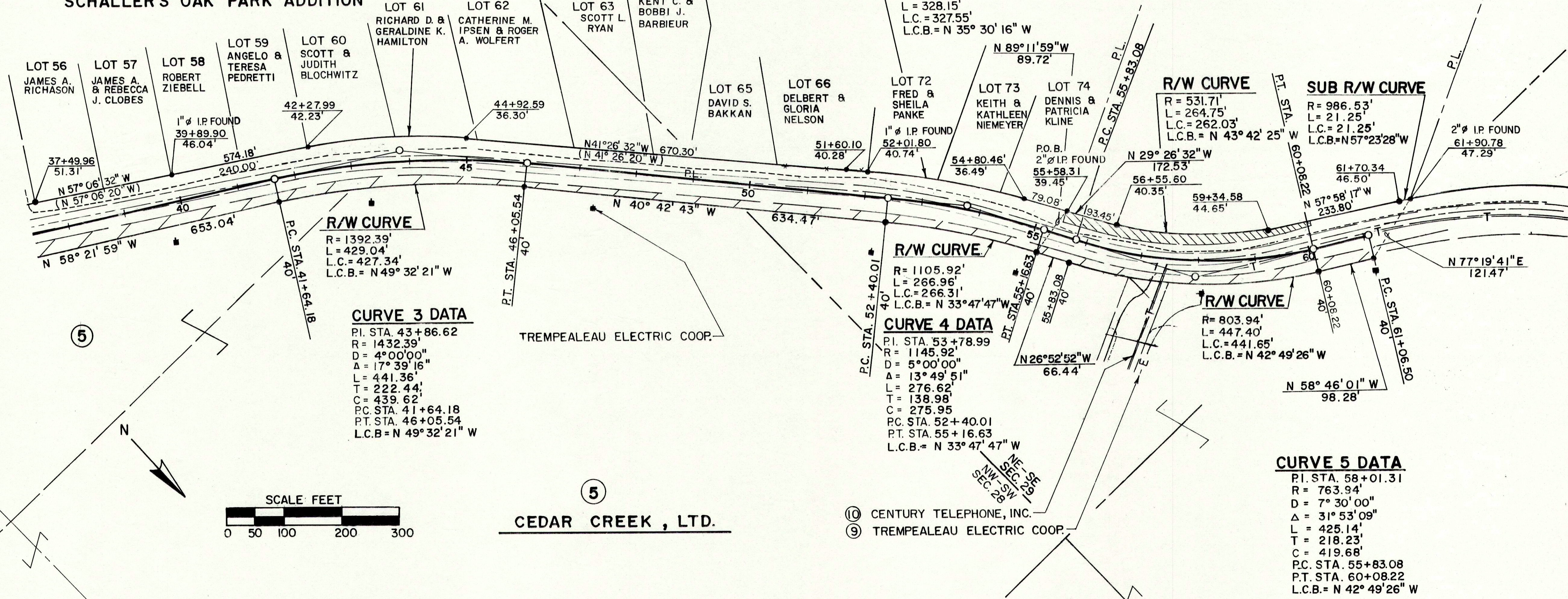
REVISION DATE	PROJECT I.D.	SHEET NUMBER	TOTAL SHEETS
9-8-87	7067-1-21		
10-20-88	FEDERAL PROJECT DESIGNATION	4.4	6
4-12-90	M 4201 (005)		
12-9-92	PLAT OF RIGHT-OF-WAY REQUIRED FOR C.T.H. "SN" ONALASKA HOLMEN ROAD LACROSSE COUNTY		
	DATE		

NOT RECOVERED,
LOCATION FROM COUNTY
SURVEYOR'S FILES

SECTION 28
T.17N., R.7W.

SECTION 29
T.17N., R.7W.

SECOND ADDITION TO
SCHALLER'S OAK PARK ADDITION



5 CEDAR CREEK, LTD.

- 10 CENTURY TELEPHONE, INC.
- 9 TREMPEALEAU ELECTRIC COOP.

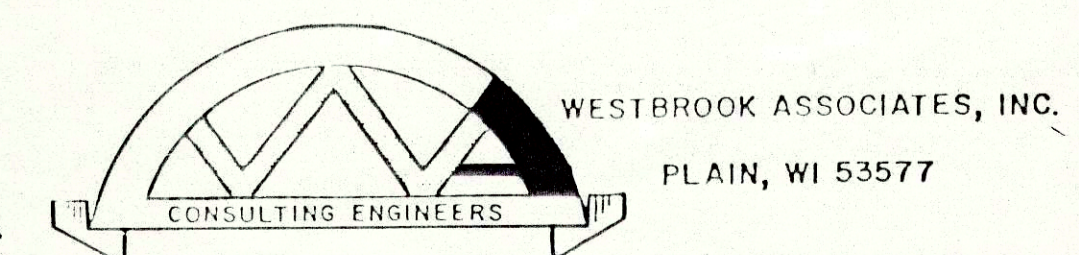


TABLE OF R/W COURSES

ITEM	BEARING	DISTANCE	RADIUS	LENGTH
C	N 89° 53' 22" W	66.00'	---	---
D	N 0° 13' 48" E	247.94'	---	---
E	N 1° 39' 22" W	90.04'	---	---
F	N 45° 31' 42" E	52.60'	---	---
G	S 89° 32' 02" E	32.51'	---	---
H	S 89° 32' 02" E	50.49'	---	---
I	N 0° 50' 04" E	76.19'	---	---
J	N 89° 59' 58" E	10.05'	---	---
K	N 89° 59' 56" W	37.00'	---	---
L	S 0° 50' 03" W	36.86'	---	---

REVISION DATE	PROJECT I. D.	SHEET NUMBER	TOTAL SHEETS
9-8-87	7067-01-21	4.5	6
10-20-88	FEDERAL PROJECT DESIGNATION		
4-12-90	M 4201 (005)		
12-09-92	PLAT OF RIGHT-OF-WAY REQUIRED FOR		
	C.T.H. "SN"		
	ONALASKA-HOLMEN ROAD		
	LACROSSE COUNTY		
CONST. PROJECT	DATE		

CURVE DATA ('D' LINE)

P.I. STA. 13'D + 41.71
 R = 127.00'
 D = 45° 06' 49"
 Δ = 52° 13' 43"
 L = 115.77'
 T = 62.26'
 P.C. STA. 12'D + 79.45
 P.T. STA. 13'D + 95.22
 L.C. = 111.80'
 L.C.B. = N 26° 23' 13" E

SECTION 29
T.17N., R.7W.

END RELOCATION ORDER
PROJECT 7067-01-21
STA. 77+28.72

76.59 FEET NORTH AND 0.62 FEET EAST FROM THE NORTHWEST CORNER OF THE SOUTHEAST QUARTER (SE 1/4) OF THE NORTHEAST QUARTER (NE 1/4) OF SECTION 29, T.17N., R.7W.

