

R/W PROJECT NUMBER 7190-05-21	SHEET NUMBER 4.1	TOTAL SHEETS 2
ADVANCED ACQUISITION		
PLAT OF RIGHT-OF-WAY REQUIRED FOR POPLAR STREET - U.S.H. 53		
STH 35		L.A. CROSSE CO.

PARCEL 16  
TAX PARCEL NO. 18-2096-45  
WARRANTY DEED NO. 939660  
V. 656, P. 38

*18-2096-45 deleted & added to 18-2096-903 for 2013  
WD 1612662*

*18-2096-903*

BRASS CAP  
LUNDE MARKER  
Y=165645.760  
X=450827.140

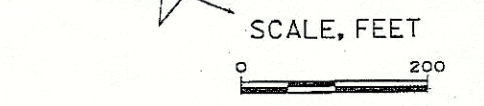
Y=168235.503  
X=448133.214  
BERNTSEN MON.

<p><b>CONVENTIONAL SYMBOLS</b></p> <ul style="list-style-type: none"> <li>FOUND IRON PIPE/PIN</li> <li>R/W MONUMENT</li> <li>R/W STANDARD SIGN</li> <li>SECTION CORNER MONUMENT</li> <li>SECTION CORNER SYMBOL</li> <li>FEE HATCH (VARIES)</li> <li>TEMPORARY LIMITED EASEMENT</li> <li>PERMANENT LIMITED EASEMENT</li> <li>R/W BOUNDARY POINT</li> <li>PARCEL NUMBER</li> <li>UTILITY INTEREST</li> <li>SIGN NUMBER (OFF PRESS)</li> <li>BUILDING</li> </ul>	<p><b>CONVENTIONAL ABBREVIATIONS</b></p> <ul style="list-style-type: none"> <li>AP REFERENCE LINE</li> <li>AR RELEASE OF RIGHTS</li> <li>AC REMAINING</li> <li>ET. AL. RIGHT-OF-WAY</li> <li>C/S SECTION</li> <li>C/S STATION</li> <li>CSM TEMPORARY LIMITED EASEMENT</li> <li>DOC. VOLUME</li> <li>DOCC. CURVE DATA</li> <li>EASE. V.</li> <li>LONG CHORD H.C.</li> <li>LONG CHORD BEARING LCB</li> <li>RADIUS R</li> <li>D. DEGREE OF CURVE</li> <li>P. CENTRAL ANGLE OR DELTA</li> <li>L. LENGTH OF CURVE</li> <li>TAN TANGENT</li> </ul>
---	--

**SCHEDULE OF LANDS AND INTERESTS REQUIRED**  
OWNER'S NAMES ARE SHOWN FOR REFERENCE PURPOSES ONLY AND ARE SUBJECT TO CHANGE PRIOR TO THE TRANSFER OF LANDS TO THE DEPARTMENT

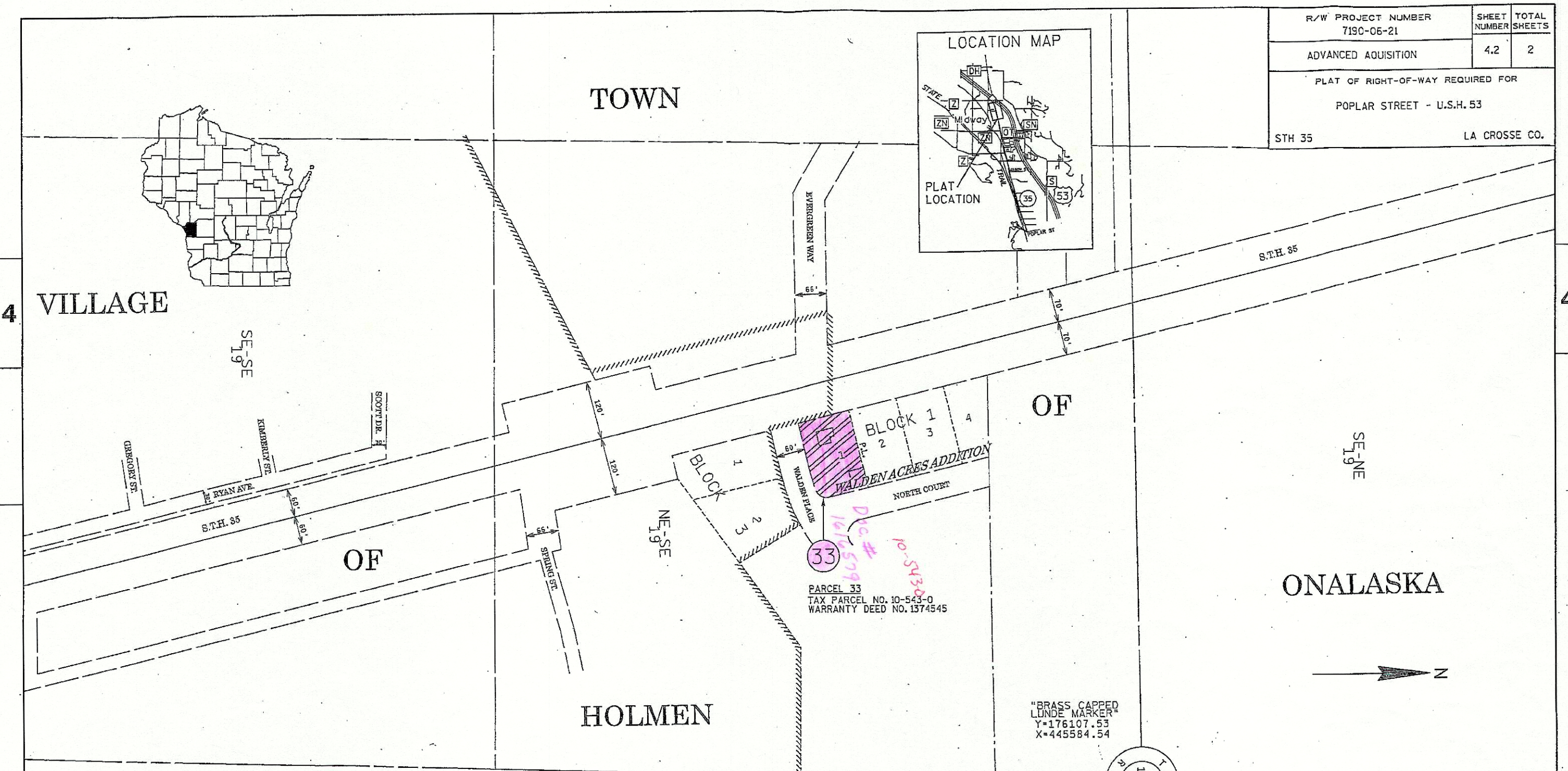
PARCEL NUMBER	OWNER	INTEREST REQUIRED	ACREAGE REQUIRED TOTAL
16	GERALD JACK SHEPARD & PATRICIA LYNN SHEPARD	FEE	0.20

\*\*THIS PARCEL WILL BE INCORPORATED INTO TRANSPORTATION PROJECT PLAT 7190-05-21

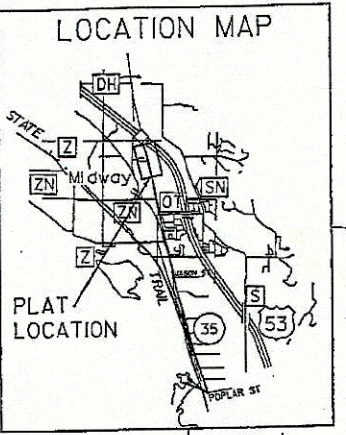


REVISION DATE  
**122**

STATE OF WISCONSIN  
DEPARTMENT OF TRANSPORTATION  
APPROVED FOR THE DEPARTMENT  
DATE: 5/23/2012  
*James R. Klehn*  
JAMES R. KLEHN



R/W PROJECT NUMBER 7190-05-21	SHEET 4.2	TOTAL NUMBER SHEETS 2
PLAT OF RIGHT-OF-WAY REQUIRED FOR POPLAR STREET - U.S.H. 53		
STH 35		LA CROSSE CO.



<b>CONVENTIONAL SYMBOLS</b>	<b>CONVENTIONAL ABBREVIATIONS</b>
<ul style="list-style-type: none"> <li>FOUND IRON PIPE/PIN</li> <li>R/W MONUMENT</li> <li>R/W STANDARD</li> <li>SLON</li> <li>SECTION CORNER MONUMENT</li> <li>SECTION CORNER SYMBOL</li> <li>FEE (HATCH VARIES)</li> <li>TEMPORARY LIMITED EASEMENT</li> <li>PERMANENT LIMITED EASEMENT</li> <li>R/W BOUNDARY POINT</li> <li>PARCEL NUMBER</li> <li>UTILITY INTEREST</li> <li>SLON NUMBER (OFF PREMISE)</li> <li>BUILDING</li> </ul>	<ul style="list-style-type: none"> <li>ACCESS POINT</li> <li>DRIVEWAY CONNECTION</li> <li>ACCESS RIGHTS</li> <li>ACRES</li> <li>AND OTHERS</li> <li>CENTERLINE</li> <li>CERTIFIED SURVEY MAP</li> <li>CORNER</li> <li>DOCUMENT</li> <li>EASEMENT</li> <li>HIGHWAY EASEMENT</li> <li>LAND CONTRACT</li> <li>MONUMENT</li> <li>PAGE</li> <li>PERMANENT LIMITED EASEMENT</li> <li>RECORDED AS</li> </ul>

<b>CONVENTIONAL ABBREVIATIONS</b>	<b>CURVE DATA</b>
<ul style="list-style-type: none"> <li>AP REFERENCE LINE</li> <li>AR RELEASE OF RIGHTS</li> <li>REMAINING</li> <li>AC. RIGHT-OF-WAY</li> <li>ET AL. SECTION</li> <li>C/L STATION</li> <li>CSM TEMPORARY LIMITED EASEMENT</li> <li>COR. VOLUME</li> <li>DOC.</li> <li>EASE.</li> <li>H.E. LONG CHORD BEARING</li> <li>LC LONG CHORD BEARING</li> <li>MON. RADIUS</li> <li>P. DEGREE OF CURVE</li> <li>PL. CENTRAL ANGLE OR DELTA</li> <li>PL. LENGTH OF CURVE</li> <li>PL. TANGENT</li> </ul>	<ul style="list-style-type: none"> <li>LOG</li> <li>LOB</li> <li>R</li> <li>D</li> <li>DELTA</li> <li>L</li> <li>TAN</li> </ul>

**SCHEDULE OF LANDS AND INTERESTS REQUIRED**  
OWNER'S NAMES ARE SHOWN FOR REFERENCE PURPOSES ONLY AND ARE SUBJECT TO CHANGE PRIOR TO THE TRANSFER OF LANDS TO THE DEPARTMENT.

PARCEL NUMBER	OWNER	INTEREST REQUIRED	ACREAGE REQUIRED	TOTAL
33	TODD A. & LINDA S. TRAUTMANN	FEE	0.40	1.61579

\*\*THIS PARCEL WILL BE INCORPORATED INTO TRANSPORTATION PROJECT PLAT 7190-05-21

SCALE, FEET  
0 200

REVISION DATE

STATE OF WISCONSIN  
DEPARTMENT OF TRANSPORTATION

APPROVED FOR THE DEPARTMENT  
DATE: 5/23/2012  
James R. Kuehn  
JAMES R. KUEHN