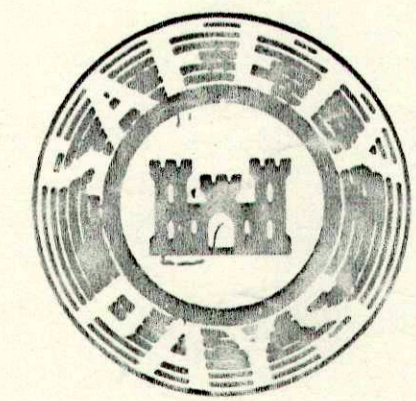


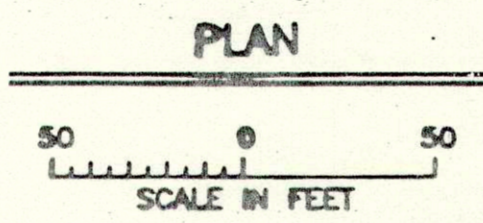
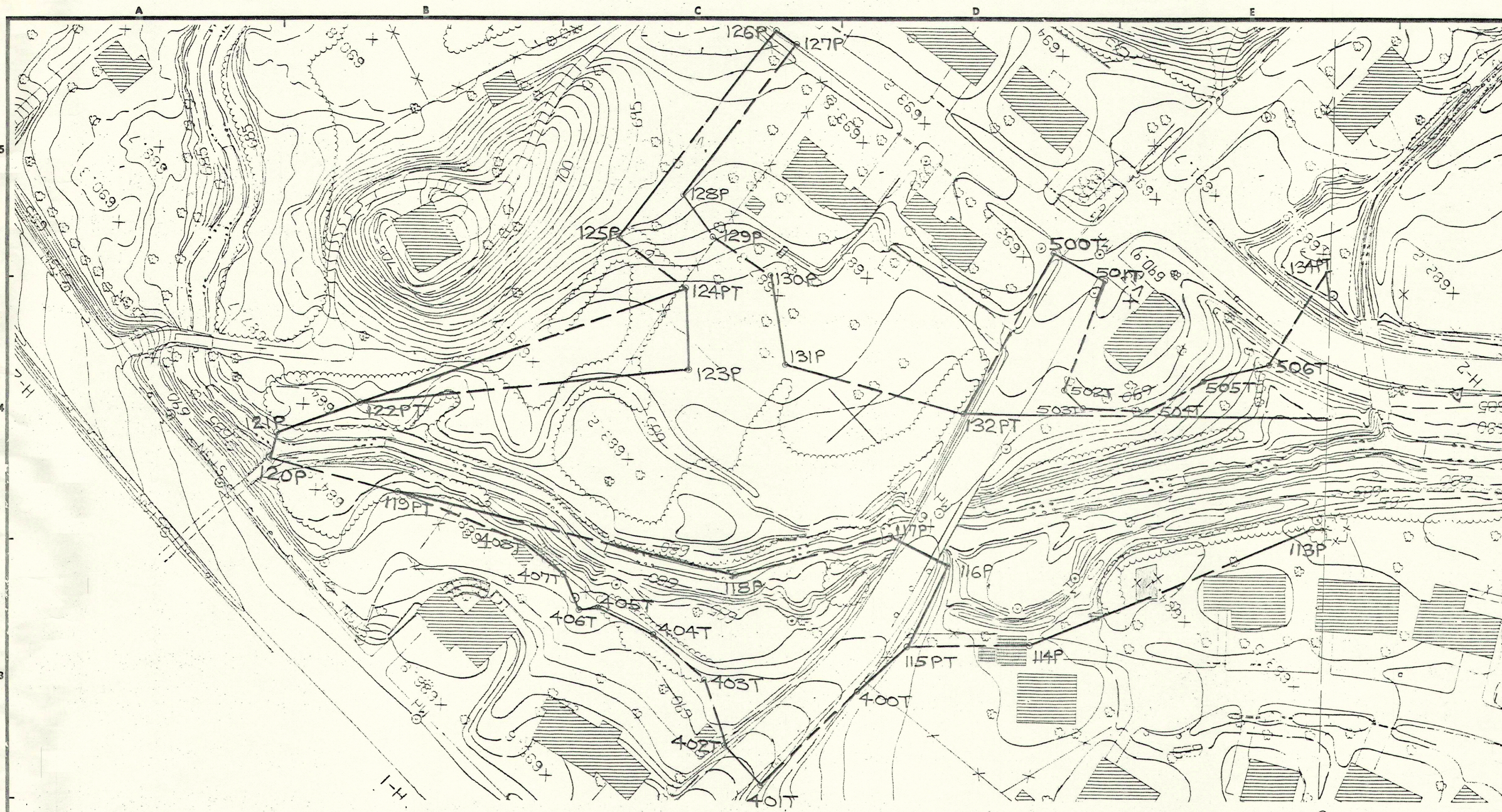
**NOTES:**  
 1. COORDINATE AND GRID FOR PROJECT ARE WISC. STATE PLANE, SOUTH ZONE.

**REFERENCES:** \_\_\_\_\_ **DWG. NO.** 11/

SYMBOL	DESCRIPTION	DATE	APPROVAL
-2 AUG 1990	<b>DEPARTMENT OF THE ARMY</b> ST. PAUL DISTRICT, CORPS OF ENGINEERS ST. PAUL, MINNESOTA		
DESIGNED BY: JJC	FLOOD CONTROL - PAMMEL CREEK LA CROSSE, WISCONSIN		
DRAWN BY:	<b>STATE ROAD AND EBNER COULEES - STAGE III</b>		
CHECKED BY: JRM	RIGHT OF WAY		
SUBMITTED BY:	STA. 110+00 TO 119+00		
ED-D BRANCH	APPROVED BY:	DATE	
ED-D BRANCH	CHIEF ENGR. DIVISION	SCALE: AS SHOWN SHEET NO. DACW37-...-B-0G	
<b>DRAFT</b>		DRAWING NUMBER M24.7-P-11/..	
		SHEET 4 OF 6	



13



E11683,000  
N1654,500

**NOTES:**

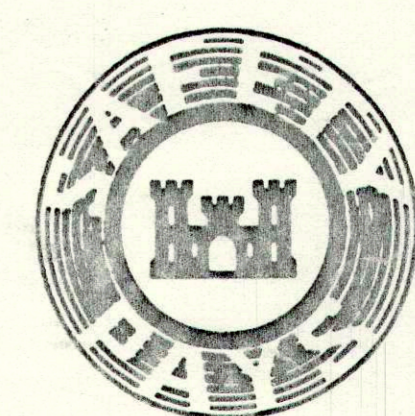
- COORDINATE AND GRID FOR PROJECT ARE WISC. STATE PLANE, SOUTH ZONE.

**REFERENCES:**

- COORDINATE TABLES

**DWG. NO.**

11/



SYMBOL	DESCRIPTION	DATE	APPROVAL
-2 AUG 1990	DEPARTMENT OF THE ARMY ST. PAUL DISTRICT, CORPS OF ENGINEERS ST. PAUL, MINNESOTA		
DESIGNED BY: JJC	FLOOD CONTROL - FAMEL CREEK LA CROSSE, WISCONSIN		
DRAWN BY:	STATE ROAD AND EBNER COULEES - STAGE III RIGHT OF WAY		
CHECKED BY: JBM	STA. 128+50 TO 136+40.13		
SUBMITTED BY:	APPROVED BY:	DATE:	
SCALE: AS SHOWN	SPEC. NO. DACW37-8-06		
<b>DRAFT</b>		DRAWING NUMBER	
		M24.7-P-11/	
		SHEET 6 OF 6	