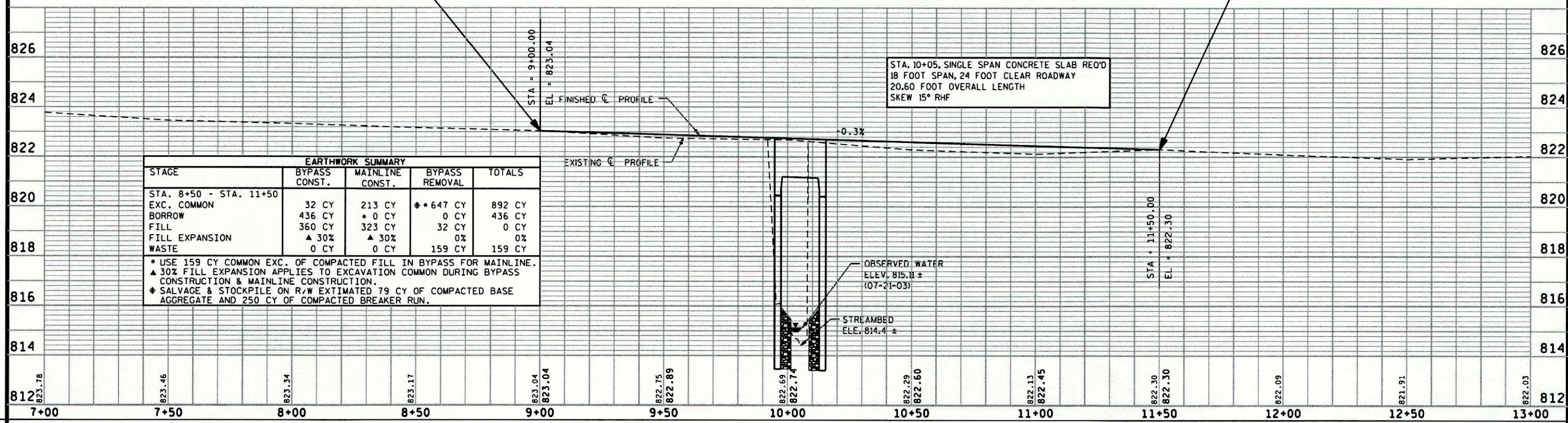
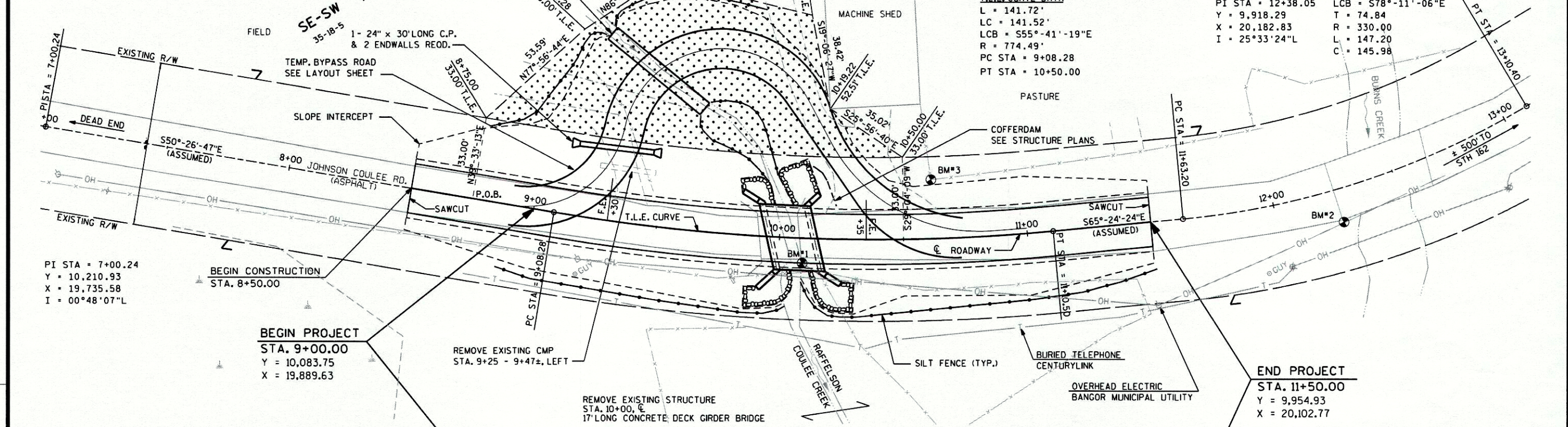


SCHEDULE OF LANDS & INTERESTS REQUIRED		
PARCEL NUMBER	OWNER	INTEREST REQUIRED
1	KARL YOUNG	T.L.E. = 0.16 ACRE

NOTE: COORDINATES ARE BASED ON A LOCAL ASSUMED COORDINATE & BEARING SYSTEM.



STAGE	EARTHWORK SUMMARY			TOTALS
	BYPASS CONST.	MAINLINE CONST.	BYPASS REMOVAL	
STA. 8+50 - STA. 11+50				
EXC. COMMON	32 CY	213 CY	♦ 647 CY	892 CY
BORROW	436 CY	+ 0 CY	0 CY	436 CY
FILL	360 CY	323 CY	32 CY	0 CY
FILL EXPANSION	▲ 30%	▲ 30%	0%	0%
WASTE	0 CY	0 CY	159 CY	159 CY

* USE 159 CY COMMON EXC. OF COMPACTED FILL IN BYPASS FOR MAINLINE.
 ▲ 30% FILL EXPANSION APPLIES TO EXCAVATION COMMON DURING BYPASS CONSTRUCTION & MAINLINE CONSTRUCTION.
 ♦ SALVAGE & STOCKPILE ON R/W ESTIMATED 79 CY OF COMPACTED BASE AGGREGATE AND 250 CY OF COMPACTED BREAKER RUN.

BENCHMARKS			
NO.	STA.	DESCRIPTION	ELEV.
1	10+09.10' RT.	CHISELED X ON SOUTH CORNER OF EXISTING STRUCTURE	821.08
2	12+26.13' RT.	CHISELED SQUARE ON SW CORNER OF BRIDGE OVER BURNS CREEK	821.13
3	10+62.24' LT.	40# NAIL IN CORNER FENCE POST	820.96

PI STA = 10+09.97
 Y = 10,013.69
 X = 19,974.39
 I = 14°57'37" L
 SE = 2.0% MAX.

LCB = S57°55'35"E
 T = 101.69
 R = 774.49
 L = 202.22
 C = 201.65

T.L.E. CURVE DATA
 L = 141.72'
 LC = 141.52'
 LCB = S55°41'19"E
 R = 774.49'
 PC STA = 9+08.28
 PT STA = 10+50.00

PI STA = 12+38.05
 Y = 9,918.29
 X = 20,182.83
 I = 25°33'24" L
 LCB = S78°11'06"E
 T = 74.84
 R = 330.00
 L = 147.20
 C = 145.98

131