

Received 4/15/14 - Revision of one received 2-13-14

R/W PROJECT NUMBER 5991-05-08, 5991-05-93 AND 5991-07-17	SHEET NUMBER 4.01	TOTAL SHEETS 7
FEDERAL PROJECT NUMBER 4.01 7		
PLAT OF RIGHT-OF-WAY REQUIRED FOR CITY OF LA CROSSE, DAIRYLAND POWER TRAIL CITY OF LA CROSSE, NORTHSIDE CONNECTOR TRAIL LA CROSSE-ONALASKA, OAK STREET CONNECTION NON HIGHWAY LA CROSSE COUNTY		
CONSTRUCTION PROJECT NUMBER 5991-05-09, 5991-05-95 AND 5991-07-19		

CONVENTIONAL ABBREVIATIONS

ACCESS POINT/ DRIVEWAY CONNECTION	AP	REFERENCE LINE	R/L
ACCESS RIGHTS	AR	RELEASE OF RIGHTS	ROR
ACRES	AC.	REMAINING	REM.
AND OTHERS	ET.AL.	RIGHT-OF-WAY	R/W
CENTERLINE	C/L	SECTION	SEC.
CERTIFIED SURVEY MAP	CSM	STATION	STA.
CORNER	COR.	TEMPORARY LIMITED EASEMENT	TLE
DOCUMENT	DOC.	VOLUME	V.
EASEMENT	EASE.	MONUMENT POST	MP
HIGHWAY EASEMENT	H.E.	CURVE DATA	
LAND CONTRACT	LC	LONG CHORD	LCH
MONUMENT	MON.	LONG CHORD BEARING	LCB
PAGE	P.	RADIUS	R
PERMANENT LIMITED EASEMENT	PLE	DEGREE OF CURVE	D
PROPERTY LINE	PL	CENTRAL ANGLE OR DELTA	DELTA
RECORDED AS	(100')	LENGTH OF CURVE	L
		TANGENT	TAN

CONVENTIONAL SYMBOLS

FOUND IRON PIPE/PIN	IP	PROPOSED R/W LINE	---
R/W MONUMENT	*(SET)	EXISTING H.E. LINE	---
R/W STANDARD	▲ (SET)	PROPERTY LINE	---
SIGN	SIGN	LOT & TIE LINES	---
SECTION CORNER MONUMENT	●	SLOPE INTERCEPTS	---
SECTION CORNER SYMBOL	⊙	CORPORATE LIMITS	---
FEE (HATCH VARIES)	⊘	NO ACCESS (BY PREVIOUS ACQUISITION/CONTROL)	---
TEMPORARY LIMITED EASEMENT	⊘	NO ACCESS (BY ACQUISITION)	---
PERMANENT LIMITED EASEMENT	⊘	NO ACCESS (BY STATUTORY AUTHORITY)	---
R/W POINT	⊙	SECTION LINE	---
PARCEL NUMBER	⊙	QUARTER LINE	---
UTILITY NUMBER	⊙	SIXTEENTH LINE	---
SIGN NUMBER (OFF PREMISE)	⊙	EXISTING CENTERLINE	---
BUILDING	⊙	PROPOSED REFERENCE LINE	---
		PARALLEL OFFSET	---

CONVENTIONAL UTILITY SYMBOLS

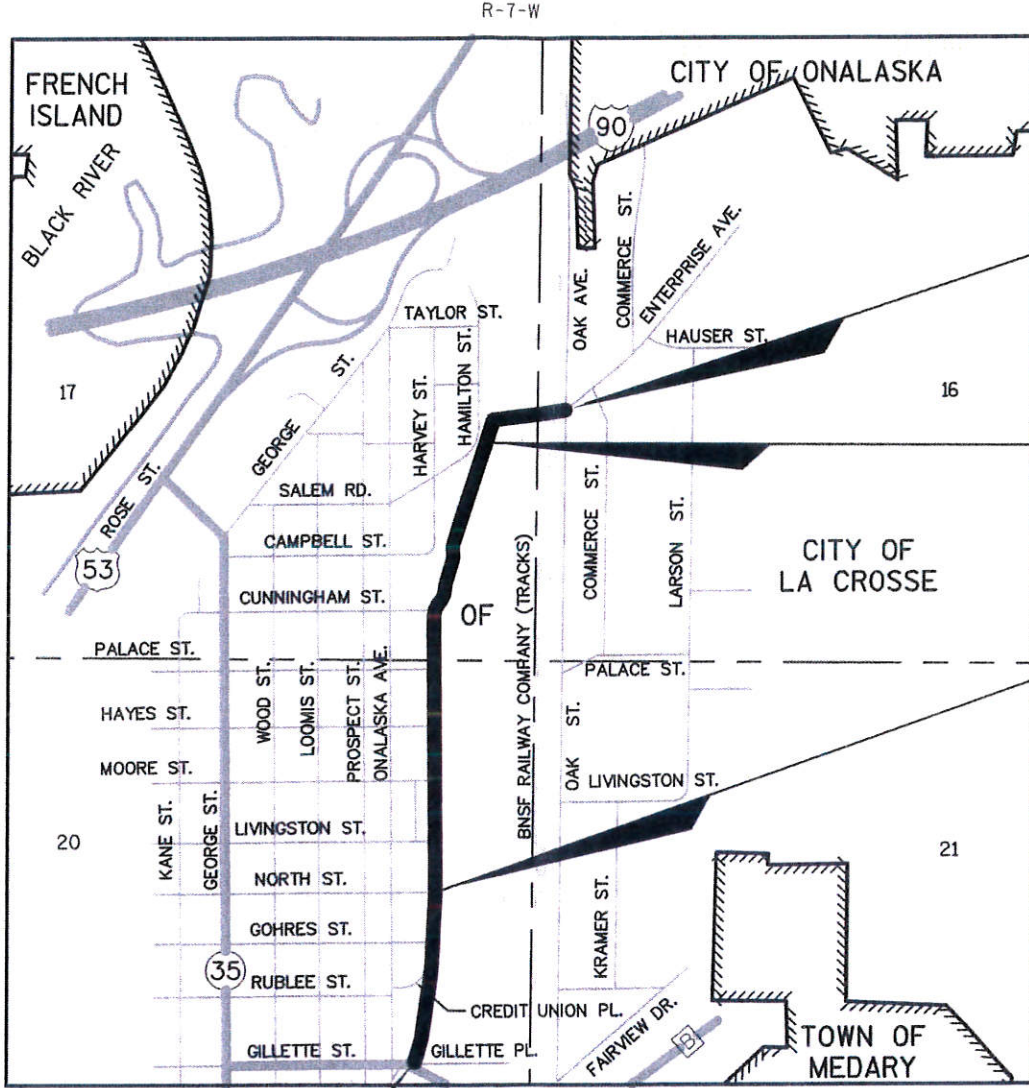
WATER	W	NON COMPENSABLE	---
GAS	G	COMPENSABLE	---
TELEPHONE	T	COMPENSABLE	---
OVERHEAD	OH	COMPENSABLE	---
TRANSMISSION LINES	---	COMPENSABLE	---
ELECTRIC	E	COMPENSABLE	---
CABLE TELEVISION	TV	COMPENSABLE	---
FIBER OPTIC	FO	COMPENSABLE	---
SANITARY SEWER	SS	COMPENSABLE	---
STORM SEWER	SS	COMPENSABLE	---
POWER POLE	⊙	COMPENSABLE	---
TELEPHONE POLE	⊙	COMPENSABLE	---
TELEPHONE PEDESTAL	⊙	COMPENSABLE	---
ELECTRIC TOWER	⊙	COMPENSABLE	---

NOTES

COORDINATES AND BEARINGS ON THIS PLAT ARE ORIENTED TO THE WISCONSIN COUNTY COORDINATE SYSTEM, LA CROSSE COUNTY ZONE, NAD 83 (1991) ADJUSTMENT. THE COORDINATES SHOWN ARE GRID COORDINATES AND ARE TO BE USED AS GRID OR GROUND VALUES ON THIS PLAT.

RIGHT-OF-WAY MONUMENTS ARE 3/4" X 24" REBAR AND WILL BE PLACED PRIOR TO THE COMPLETION OF THE PROJECT.

RIGHT-OF-WAY BOUNDARIES ARE DEFINED WITH COURSES OF THE PERIMETER OF THE HIGHWAY LANDS REFERENCED TO THE U.S. PUBLIC LAND SURVEY SYSTEM OR OTHER SURVEYS OF PUBLIC RECORD.



END RELOCATION ORDER
PROJECT 5991-07-17
STA 70+85.55
Y = 149,607.824
X = 451,032.689
2,221.90' NORTH AND 126.51' EAST FROM
SE COR SEC 17, T-16-N, R-7-W

END RELOCATION ORDER PROJECT 5991-05-93
BEGIN RELOCATION ORDER PROJECT 5991-07-17
STA 59+50.00
Y = 148,927.637
X = 450,337.116
1,541.71' NORTH AND 569.06' WEST FROM
SE COR SEC 17, T-16-N, R-7-W

END RELOCATION ORDER PROJECT 5991-05-08
BEGIN RELOCATION ORDER PROJECT 5991-05-93
STA 25+00.00
Y = 145,559.291
X = 449,892.427
1,826.63' SOUTH AND 1,013.75' WEST FROM
NE COR SEC 20, T-16-N, R-7-W

BEGIN RELOCATION ORDER
PROJECT 5991-05-08
STA 9+85.36
Y = 144,115.055
X = 449,753.461
3,270.87' SOUTH AND 1,152.72' WEST FROM
NE COR SEC 20, T-16-N, R-7-W



MEAD HUNT



SEAN M. WALSH
S-2016

STATE OF WISCONSIN
CITY OF LA CROSSE

APPROVED FOR THE CITY OF LA CROSSE
DATE: 2/13/2014 *T. Kelly*
(Signature)

REVISION DATE
4/16/2014 N.C.

134

SCHEDULE OF LANDS & INTERESTS REQUIRED

OWNER'S NAMES ARE SHOWN FOR REFERENCE PURPOSES ONLY AND ARE SUBJECT TO CHANGE PRIOR TO THE TRANSFER OF LAND INTERESTS TO THE CITY OF LA CROSSE.

AREAS SHOWN IN THE TOTAL ACRES COLUMN MAY BE APPROXIMATE AND ARE DERIVED FROM TAX ROLLS OR OTHER AVAILABLE SOURCES AND MAY NOT INCLUDE LANDS OF THE OWNER WHICH ARE NOT CONTIGUOUS TO THE AREA TO BE ACQUIRED.

PARCEL NUMBER	R/W PROJECT	OWNER(S)	INTEREST REQUIRED	EX R/W ACRES REQUIRED				SHEET
				NEW	EXISTING	P.E.	T.L.E.	
1638907 01	5991-05-08	MARK HALVERSON & NANCY J HALVERSON	TLE	0.00	-	-	0.01	4.03
03		BNSF RAILWAY COMPANY	PE/TLE	0.00	-	3.45	0.75	4.03, 4.04, 4.05, 4.07
	5991-05-08		PE	0.00	-	0.59	-	
	5991-05-93		PE	0.00	-	0.75	-	
	5991-07-17		PE/TLE	0.00	-	2.11	0.75	
1640021 04	5991-05-08	KENNETH P. PETERSON & REBECCA A STACKHOUSE	FEE/TLE	0.12	-	-	0.09	4.03, 4.04
1638124 06	5991-05-93	QUADRAPAR DEVELOPMENT COMPANY	FEE/TLE	0.09	-	-	0.09	4.06

1640021
1638124
1639378

SCHEDULE OF UTILITY INTERESTS REQUIRED

UTILITY NUMBER	OWNER(S)	INTEREST REQUIRED	SHEET
81	XCEL ENERGY - GAS	RELEASE OF RIGHTS 1637325	4.03, 4.04
83	XCEL ENERGY - ELECTRIC	RELEASE OF RIGHTS 1637334	4.03, 4.04, 4.05
84	CENTURYLINK	RELEASE OF RIGHTS 1637043	4.03, 4.04, 4.05, 4.06, 4.07
85	BNSF RAILWAY COMPANY	RELEASE OF RIGHTS	4.03

REVISION DATE 4/16/2014

DATE 1/24/2014
GRID FACTOR 1.0000

SCALE, FEET
0 50 100

HWY: NORTHSIDE CONNECTOR
COUNTY: LA CROSSE

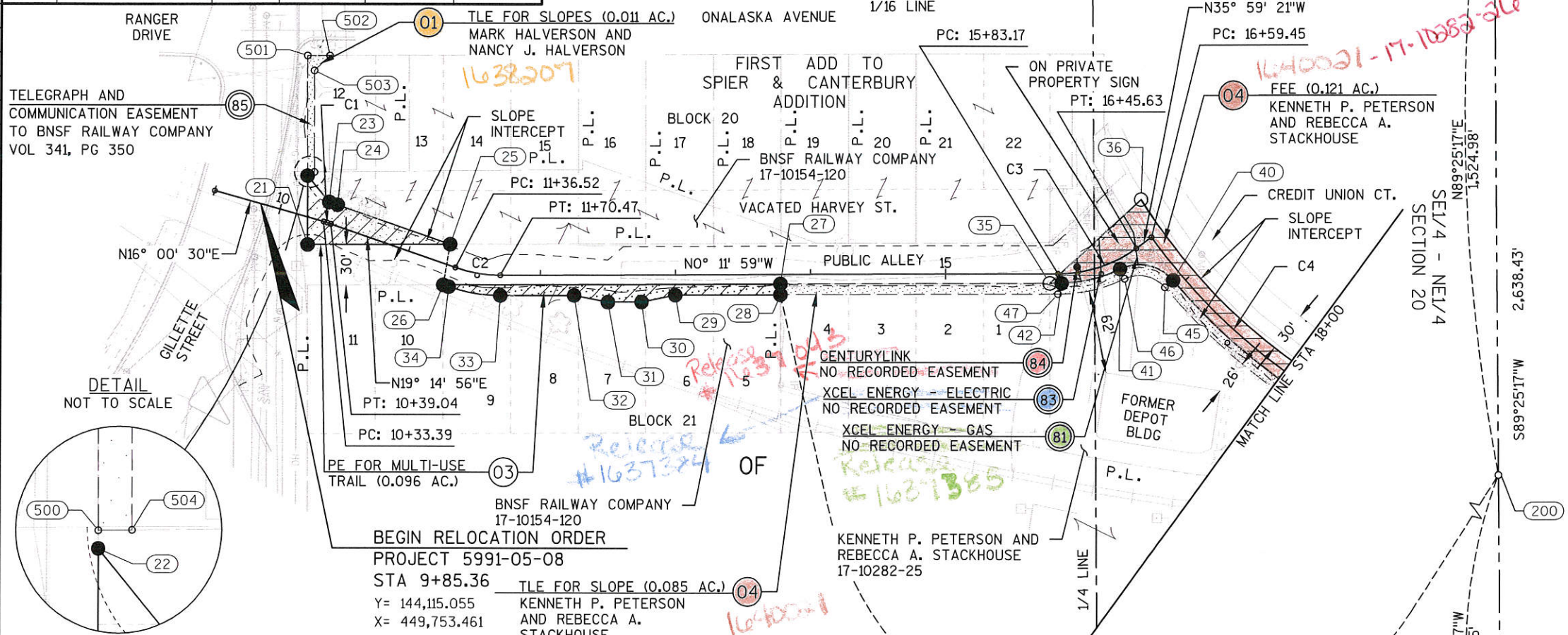
STATE R/W PROJECT: 5991-05-08/93, 5991-07-17
CONSTRUCTION PROJECT: 5991-05-09/95, 5991-07-19

PLAT SHEET 4.02
PS&E SHEET

E

R/W POINT, COURSE AND COORDINATE TABLE					
POINT	COURSE	STATION	OUT	Y	X
21		10+26.86	19.45' RT.	144149.557	449783.694
	S89°47'19"W 50.91'				
22		10+12.64	29.34' LT.	144149.370	449732.782
	N50°39'22"E 25.22'				
23		10+33.39	15.00' LT.	144165.360	449752.288
24		10+39.04	15.00' LT.	144171.558	449754.258
	N19°14'56"E 88.13'				
25		11+27.17	15.00' LT.	144254.760	449783.311
	S00°12'30"E 105.20'				
21		-	-	-	-
25		-	-	-	-
	S80°28'47"E 30.44'				
26		11+32.32	15.00' RT.	144249.726	449813.330
	N00°12'30"W 249.49'				
27		13+77.70	7.00' RT.	144499.213	449812.423
	N89°49'04"E 8.00'				
28		13+77.70	15.00' RT.	144499.238	449820.422
	S00°11'59"E 77.70'				
29		13+00.00	15.00' RT.	144421.542	449820.693
	S11°30'34"E 25.50'				
30		12+75.00	20.00' RT.	144396.559	449825.780
	S00°11'59"E 25.00'				
31		12+50.00	20.00' RT.	144371.560	449825.867
	S11°06'37"W 25.50'				
32		12+25.00	15.00' RT.	144346.542	449820.955
	S00°11'59"E 54.53'				
33		11+70.47	15.00' RT.	144292.009	449821.145
34		11+36.52	15.00' RT.	144253.696	449814.716
	S19°14'56"W 4.21'				
26		-	-	-	-
27		-	-	-	-
	N00°12'31"W 199.39'				
35		15+77.09	6.97' RT.	144698.604	449811.696
	N42°25'35"W 91.97'				
36		NA	NA	144766.493	449749.647
42		15+85.65	7.00' RT.	144707.340	449811.664
	S00°12'31"E 8.74'				
35		-	-	-	-
47		15+83.17	15.00' RT.	144704.708	449819.707
	S00°11'59"E 205.47'				
28		-	-	-	-
27		-	-	-	-
	N00°12'31"W 208.13'				
42		-	-	-	-
29		-	-	-	-
	S00°11'59"E 283.17'				
47		-	-	-	-
40		16+94.21	7.00' RT.	144790.404	449809.348
41		16+27.88	7.00' RT.	144750.902	449801.029
45		16+94.21	15.00' RT.	144784.312	449814.533
46		16+27.88	15.00' RT.	144754.386	449808.231

R/W POINT, COURSE AND COORDINATE TABLE					
POINT	COURSE	STATION	OUT	Y	X
22		-	-	-	-
	S89°47'19"W 2.68'				
500		10+11.89	31.92' LT.	144149.360	449730.100
	S89°47'19"W 86.11'				
501		9+87.84	114.60' LT.	144149.042	449643.991
	N00°12'30"W 16.36'				
502		10+03.55	119.17' RT.	144165.403	449643.931
	S44°14'16"E 15.80'				
503		9+95.71	105.45' LT.	144154.082	449654.955
	N89°47'19"E 75.10'				
504		10+16.68	33.35' LT.	144154.359	449730.047
	S00°36'19"E 5.00'				
500		-	-	-	-



CURVE TABLE						
CURVE	LENGTH	CHORD LENGTH	CHORD BEARING	RADIUS	DELTA	
23-24	6.50'	6.50'	N17°37'43"E	115.00'	3°14'26"	
33-34	39.04'	38.85'	S09°31'28"W	115.00'	19°26'54"	
36-37	210.48'	208.42'	N43°49'31"E	433.37'	27°49'38"	
39-40	157.80'	157.02'	S39°44'38"W	458.61'	19°42'52"	
40-41	43.44'	40.37'	S11°53'34"W	33.00'	75°24'59"	
41-42	45.18'	44.84'	S13°43'12"E	107.00'	24°11'27"	
44-45	160.55'	159.76'	S39°44'38"W	466.61'	19°42'52"	
45-46	32.91'	30.58'	S11°53'34"W	25.00'	75°24'59"	
46-47	51.41'	50.99'	S13°00'27"E	115.00'	25°36'56"	

CITY

CURVE 1
 PI STATION = 10+36.22
 Y = 144163.942
 X = 449767.487
 DELTA = 3°14'25"
 DEGREE = 57°17'45"
 TANGENT = 2.83'
 LENGTH = 5.66'
 RADIUS = 100.00'
 PC STATION = 10+33.39
 PT STATION = 10+39.04

CURVE 3
 PI STATION = 16+15.46
 Y = 144736.944
 X = 449804.594
 DELTA = 35°47'22"
 DEGREE = 57°17'45"
 TANGENT = 32.29'
 LENGTH = 62.46'
 RADIUS = 100.00'
 PC STATION = 15+83.17
 PT STATION = 16+45.63

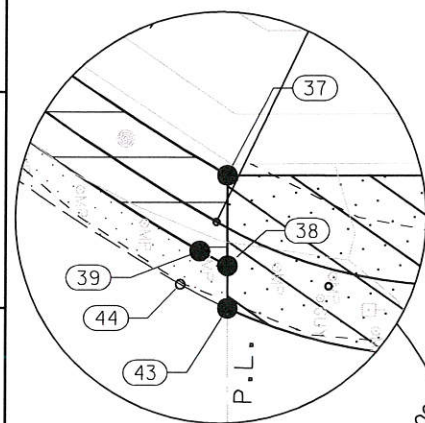
CURVE 4
 PI STATION = 17+55.95
 Y = 144830.958
 X = 449855.585
 DELTA = 24°07'27"
 DEGREE = 12°41'14"
 TANGENT = 96.50'
 LENGTH = 190.15'
 RADIUS = 451.61'
 PC STATION = 16+59.45
 PT STATION = 18+49.60

CURVE 2
 PI STATION = 11+53.66
 Y = 144274.820
 X = 449806.204
 DELTA = 19°26'54"
 DEGREE = 57°17'45"
 TANGENT = 17.14'
 LENGTH = 33.94'
 RADIUS = 100.00'
 PC STATION = 11+36.52
 PT STATION = 11+70.47

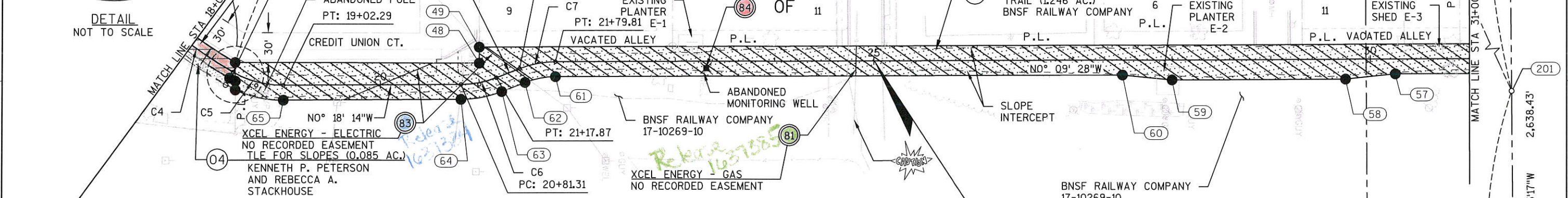
BASIS OF EXISTING R/W:
 CREDIT UNION COURT: DOC 1069742
 EXISTING PUBLIC ALLEY: FIRST ADDITION TO SPIER & CANTERBURY ADDITION
 GILLETTE STREET: FIRST ADDITION TO SPIER & CANTERBURY ADDITION

REVISION DATE	4/16/2014	DATE	1/24/2014	SCALE, FEET	0 50 100	HWY: NORTHSIDE CONNECTOR	STATE R/W PROJECT: 5991-05-08/93, 5991-07-17	PLAT SHEET	4.03
GRID FACTOR	1.0000	COUNTY: LA CROSSE	CONSTRUCTION PROJECT: 5991-05-09/95, 5991-07-19	PS&E SHEET					E

CURVE TABLE					
CURVE	LENGTH	CHORD LENGTH	CHORD BEARING	RADIUS	DELTA
36-37	210.48'	208.42'	N43°49'31"E	433.37'	27°49'38"
38-39	6.54'	6.54'	S28°08'05"W	107.00'	3°30'13"
39-40	157.80'	157.02'	S39°44'38"W	458.61'	19°42'52"
43-44	10.99'	10.99'	S27°08'51"W	115.00'	5°28'40"
44-45	160.55'	159.76'	S39°44'38"W	466.61'	19°42'52"
61-62	31.30'	31.12'	S10°42'22"E	85.00'	21°05'48"
63-64	42.05'	41.82'	S10°46'45"E	115.00'	20°57'02"
65-43	49.60'	49.22'	S12°03'08"W	115.00'	24°42'46"

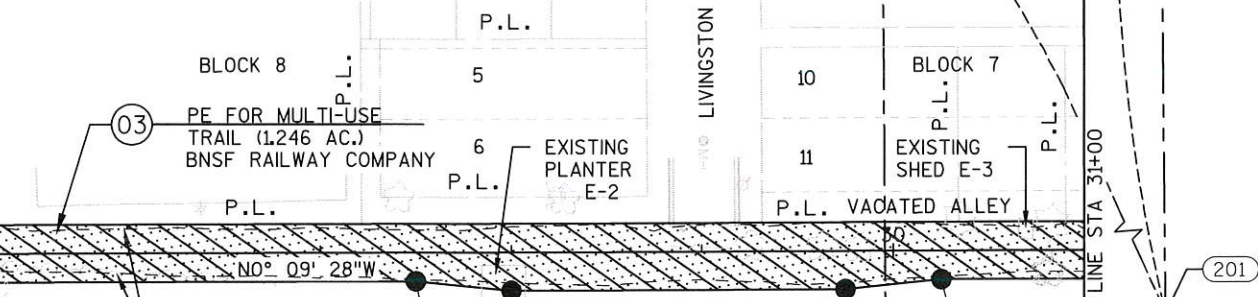


DETAIL NOT TO SCALE



ENCROACHMENT TABLE			
ENCROACHMENT NUMBER	ENCROACHMENT	STATION & OFFSET	DISPOSITION
E-1	PLANTER	23+15.52, 6.6'LT	TO BE REMOVED
E-2	PLANTER	27+96.16, 6.7'RT	TO BE REMOVED
E-3	SHED	30+69.27, 6.1'LT	TO BE REMOVED

CURVE 7
 PI STATION = 21+61.61
 Y = 145220.490
 X = 449893.361
 DELTA = 21°05'48"
 DEGREE = 57°17'45"
 TANGENT = 18.62'
 LENGTH = 36.82'
 RADIUS = 100.00'
 PC STATION = 21+42.99
 PT STATION = 21+79.81



R/W POINT, COURSE AND COORDINATE TABLE					
POINT	COURSE	STATION	OUT	Y	X
43		18+59.16	15.00' RT.	144916.933	449921.692
	S89°50'30"W 27.73				
37		18+46.63	9.52' LT.	144916.857	449893.967
	N00°08'54"E 245.58'				
48		21+04.45	19.16' LT.	145162.433	449894.603
	S89°50'45"W 16.08'				
49		21+10.17	34.70' LT.	145162.390	449878.521
	N00°09'28"W 1258.08'				
50		33+81.33	83.80' LT.	146420.461	449875.054
	S00°09'28"E 181.26'				
56		32+06.26	15.00' RT.	146265.595	449905.481
	S00°09'28"E 175.00'				
57		30+25.00	15.00' RT.	146084.336	449905.981
	S05°52'07"E 50.25'				
58		29+75.00	20.00' RT.	146034.350	449911.118
	S00°09'28"E 175.00'				
59		28+00.00	20.00' RT.	145859.350	449911.601

R/W POINT, COURSE AND COORDINATE TABLE					
POINT	COURSE	STATION	OUT	Y	X
59		-	-	-	-
	S05°33'10"W 50.25'				
60		27+50.00	15.00' RT.	145809.337	449906.738
	S00°09'28"E 570.19'				
61		21+79.81	15.00' RT.	145239.152	449908.310
	S21°15'17"E 25.12'				
62		21+42.99	15.00' RT.	145208.573	449914.091
	S00°18'14"E 179.02'				
63		21+17.87	15.00' RT.	145185.160	449923.198
	S00°18'14"E 179.02'				
64		20+81.31	15.00' RT.	145144.081	449931.019
	S00°09'28"E 181.26'				
65		19+02.29	15.00' RT.	144965.066	449931.969
	N89°50'30"E 18.86'				
37		-	-	-	-
	N89°50'30"E 8.87'				

R/W POINT, COURSE AND COORDINATE TABLE					
POINT	COURSE	STATION	OUT	Y	X
39		18+49.60	7.00' RT.	144911.140	449909.741
	S89°50'30"W 27.73				
44		18+49.60	15.00' RT.	144907.153	449916.677

CURVE 4
 PI STATION = 17+55.95
 Y = 144830.958
 X = 449855.585
 DELTA = 24°07'27"
 DEGREE = 12°41'14"
 TANGENT = 96.50'
 LENGTH = 190.15'
 RADIUS = 451.61'
 PC STATION = 16+59.45
 PT STATION = 18+49.60

CURVE 5
 PI STATION = 18+76.57
 Y = 144938.014
 X = 449917.112
 DELTA = 30°11'26"
 DEGREE = 57°17'45"
 TANGENT = 26.97'
 LENGTH = 52.69'
 RADIUS = 100.00'
 PC STATION = 18+49.60
 PT STATION = 19+02.29

CURVE 6
 PI STATION = 20+99.79
 Y = 145162.490
 X = 449915.921
 DELTA = 20°57'02"
 DEGREE = 57°17'45"
 TANGENT = 18.49'
 LENGTH = 36.57'
 RADIUS = 100.00'
 PC STATION = 20+81.31
 PT STATION = 21+17.87

END RELOCATION ORDER PROJECT 5991-05-08
 BEGIN RELOCATION ORDER PROJECT 5991-05-93
 STA 25+00.00
 Y = 145,559.291
 X = 449,892.427

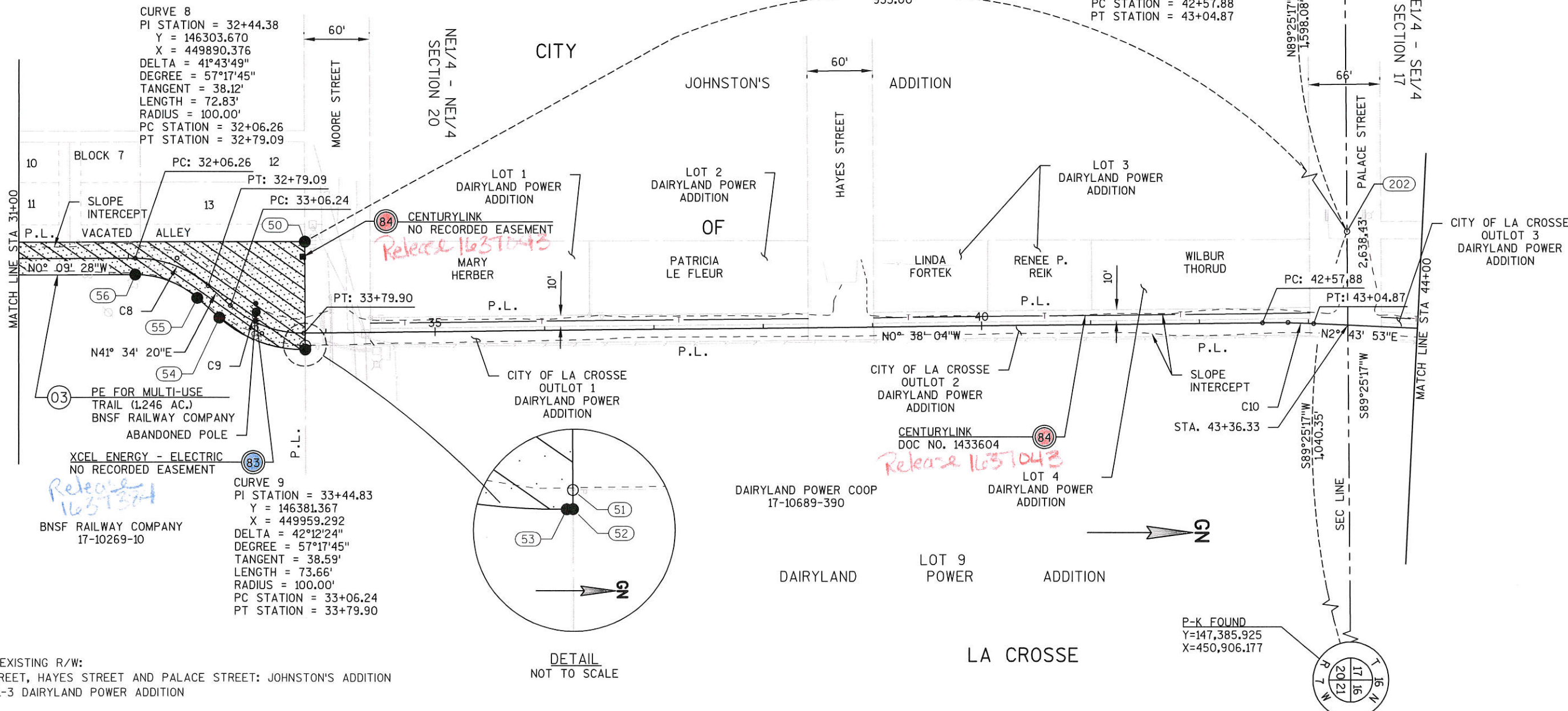
LA CROSSE

P-K FOUND
 Y=147,385.925
 X=450,906.177

BASIS OF EXISTING R/W: JOHNSTON'S ADDITION

REVISION DATE	4/16/2014	DATE	1/24/2014	SCALE, FEET	0 50 100	HWY:	NORTHSIDE CONNECTOR	STATE R/W PROJECT:	5991-05-08/93, 5991-07-17	PLAT SHEET	4.04
		GRID FACTOR	1.0000			COUNTY:	LA CROSSE	CONSTRUCTION PROJECT:	5991-05-09/95, 5991-07-19	PS&E SHEET	----
											E

R/W POINT, COURSE AND COORDINATE TABLE						CURVE TABLE					
POINT	COURSE	STATION	OUT	Y	X	CURVE	LENGTH	CHORD LENGTH	CHORD BEARING	RADIUS	DELTA
49		21+10.17	34.70' LT.	145162.390	449878.521	53-54	84.71'	82.81'	S20°28'08"W	115.00'	42°12'24"
	N00°09'28"W 1258.08"					55-56	61.91'	60.55'	S20°42'26"W	85.00'	41°43'49"
50		33+81.33	83.80' LT.	146420.461	449875.054						
	N89°32'10"E 98.80'										
52		33+81.04	15.00' RT.	146421.260	449973.851						
	S00°38'04"E 1.14'										
53		33+79.90	15.00' RT.	146420.125	449973.864						
54		33+06.24	15.00' RT.	146342.542	449944.904						
	S41°34'20"W 27.15'										
55		32+79.09	15.00' RT.	146322.232	449926.891						
56		32+06.26	15.00' RT.	146265.595	449905.481						
	S00°09'28"E 181.26'										
57		30+25.00	15.00' RT.	146084.336	449905.981						



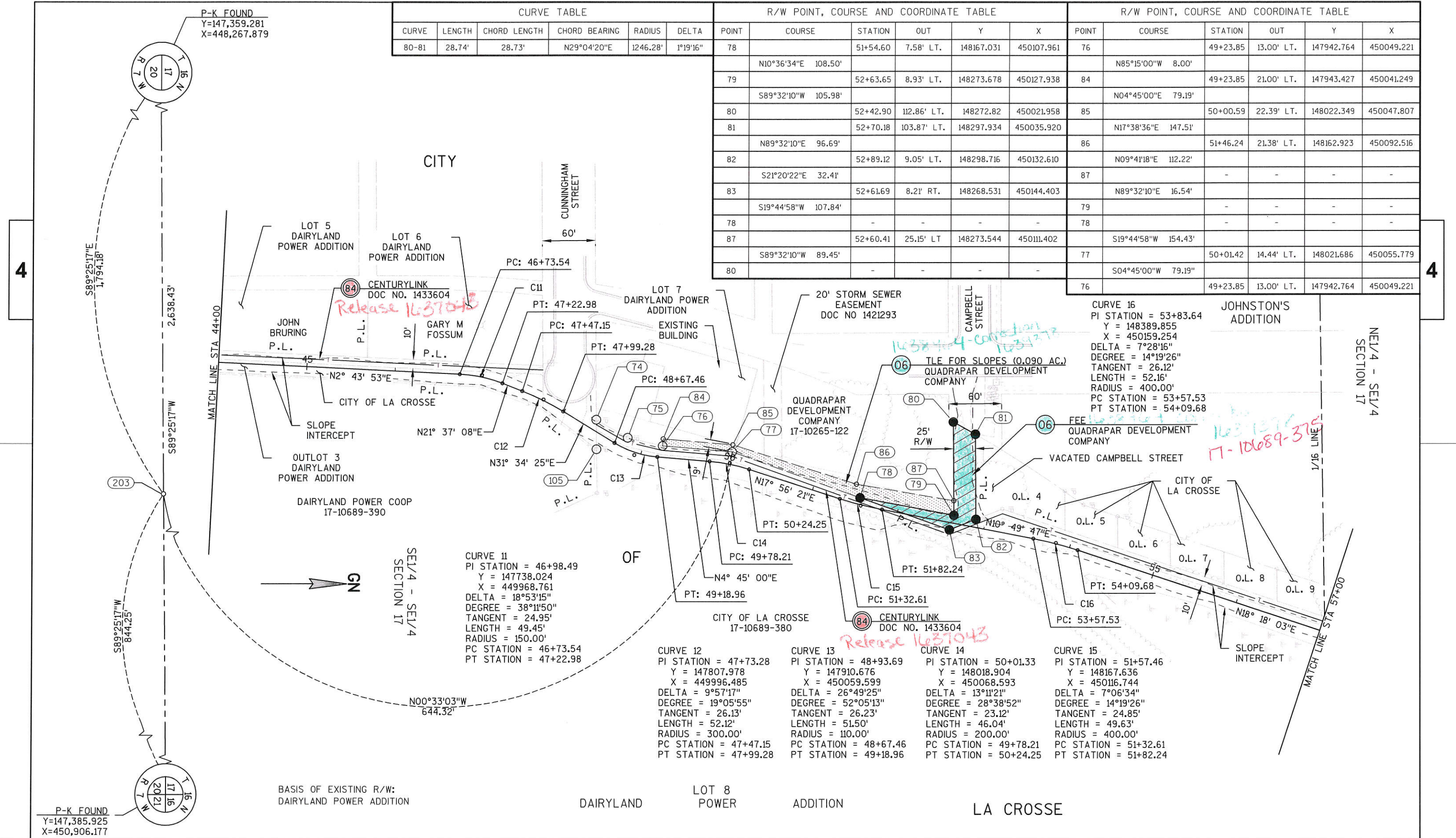
BASIS OF EXISTING R/W:
 MOORE STREET, HAYES STREET AND PALACE STREET: JOHNSTON'S ADDITION
 OUTLOTS 1-3 DAIRYLAND POWER ADDITION

REVISION DATE	4/16/2014 N.C.	DATE	1/24/2014	SCALE, FEET	HWY: NORTHSIDE CONNECTOR	STATE R/W PROJECT: 5991-05-08/93, 5991-07-17	PLAT SHEET	4.05
		GRID FACTOR	1.0000		COUNTY: LA CROSSE	CONSTRUCTION PROJECT: 5991-05-09/95, 5991-07-19	PS&E SHEET	----

CURVE TABLE					
CURVE	LENGTH	CHORD LENGTH	CHORD BEARING	RADIUS	DELTA
80-81	28.74'	28.73'	N29°04'20"E	1246.28'	1°19'16"

R/W POINT, COURSE AND COORDINATE TABLE					
POINT	COURSE	STATION	OUT	Y	X
78		51+54.60	7.58' LT.	148167.031	450107.961
	N10°36'34"E	108.50'			
79		52+63.65	8.93' LT.	148273.678	450127.938
	S89°32'10"W	105.98'			
80		52+42.90	112.86' LT.	148272.82	450021.958
81		52+70.18	103.87' LT.	148297.934	450035.920
	N89°32'10"E	96.69'			
82		52+89.12	9.05' LT.	148298.716	450132.610
	S21°20'22"E	32.41'			
83		52+61.69	8.21' RT.	148268.531	450144.403
	S19°44'58"W	107.84'			
78		-	-	-	-
87		52+60.41	25.15' LT	148273.544	450111.402
	S89°32'10"W	89.45'			
80		-	-	-	-

R/W POINT, COURSE AND COORDINATE TABLE					
POINT	COURSE	STATION	OUT	Y	X
76		49+23.85	13.00' LT.	147942.764	450049.221
	N85°15'00"W	8.00'			
84		49+23.85	21.00' LT.	147943.427	450041.249
	N04°45'00"E	79.19'			
85		50+00.59	22.39' LT.	148022.349	450047.807
	N17°38'36"E	147.51'			
86		51+46.24	21.38' LT.	148162.923	450092.516
	N09°41'18"E	112.22'			
87		-	-	-	-
79		-	-	-	-
78		-	-	-	-
77		50+01.42	14.44' LT.	148021.686	450055.779
	S04°45'00"W	79.19'			
76		49+23.85	13.00' LT.	147942.764	450049.221



CURVE 11
 PI STATION = 46+98.49
 Y = 147738.024
 X = 449968.761
 DELTA = 18°53'15"
 DEGREE = 38°11'50"
 TANGENT = 24.95'
 LENGTH = 49.45'
 RADIUS = 150.00'
 PC STATION = 46+73.54
 PT STATION = 47+22.98

CURVE 12
 PI STATION = 47+73.28
 Y = 147807.978
 X = 449996.485
 DELTA = 9°57'17"
 DEGREE = 19°05'55"
 TANGENT = 26.13'
 LENGTH = 52.12'
 RADIUS = 300.00'
 PC STATION = 47+47.15
 PT STATION = 47+99.28

CURVE 13
 PI STATION = 48+93.69
 Y = 147910.676
 X = 450059.599
 DELTA = 26°49'25"
 DEGREE = 52°05'13"
 TANGENT = 26.23'
 LENGTH = 51.50'
 RADIUS = 110.00'
 PC STATION = 48+67.46
 PT STATION = 49+18.96

CURVE 14
 PI STATION = 50+01.33
 Y = 148018.904
 X = 450068.593
 DELTA = 13°11'21"
 DEGREE = 28°38'52"
 TANGENT = 23.12'
 LENGTH = 46.04'
 RADIUS = 200.00'
 PC STATION = 49+78.21
 PT STATION = 50+24.25

CURVE 15
 PI STATION = 51+57.46
 Y = 148167.636
 X = 450116.744
 DELTA = 7°06'34"
 DEGREE = 14°19'26"
 TANGENT = 24.85'
 LENGTH = 49.63'
 RADIUS = 400.00'
 PC STATION = 51+32.61
 PT STATION = 51+82.24

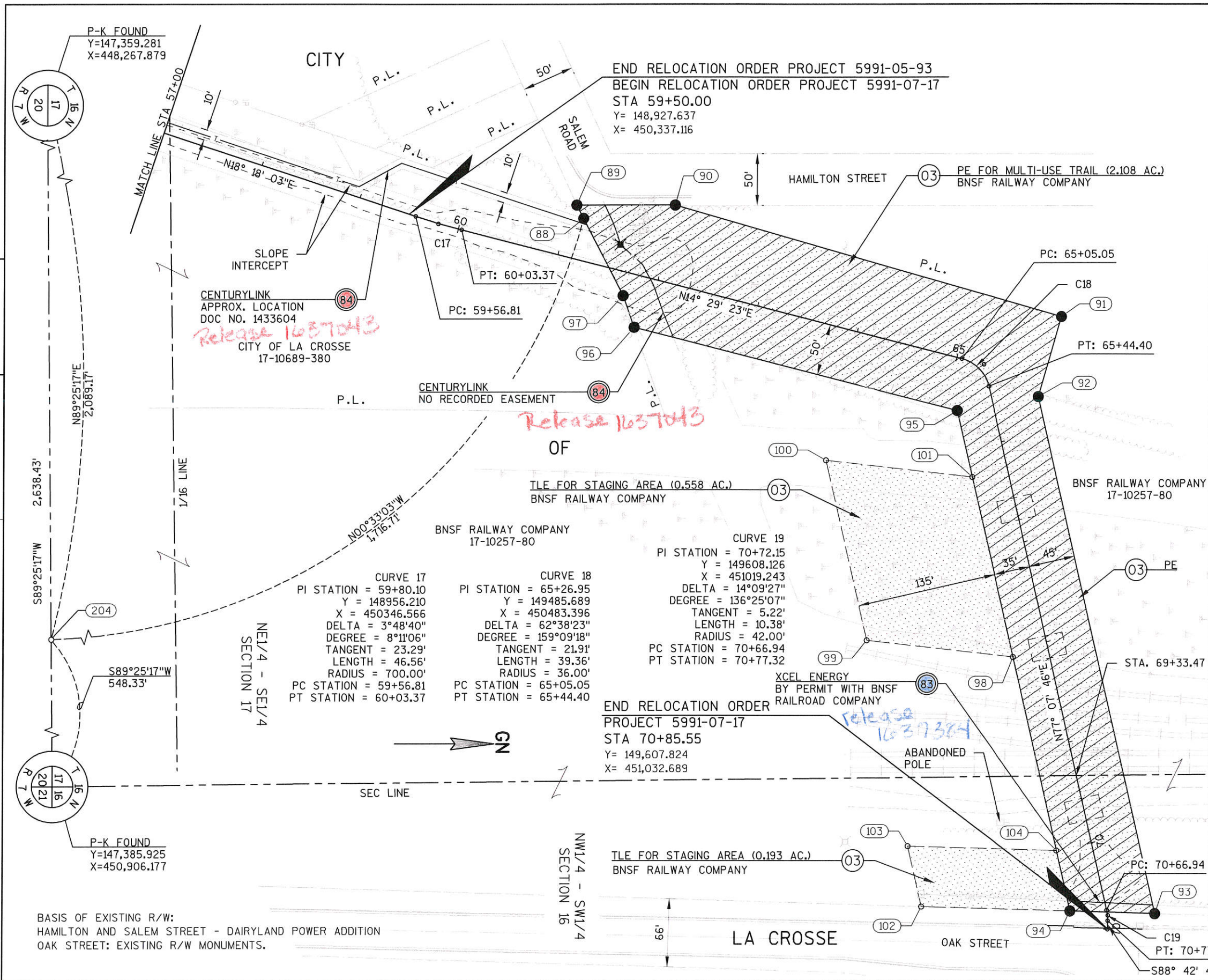
CURVE 16
 PI STATION = 53+83.64
 Y = 148389.855
 X = 450159.254
 DELTA = 7°28'16"
 DEGREE = 14°19'26"
 TANGENT = 26.12'
 LENGTH = 52.16'
 RADIUS = 400.00'
 PC STATION = 53+57.53
 PT STATION = 54+09.68

REVISION DATE	4/16/2014 N.C.
DATE	1/24/2014
SCALE, FEET	0 50 100
GRID FACTOR	1.0000

Hwy: NORTHSIDE CONNECTOR	STATE R/W PROJECT: 5991-05-08/93, 5991-07-17
COUNTY: LA CROSSE	CONSTRUCTION PROJECT: 5991-05-09/95, 5991-07-19

PLAT SHEET	4.06
PS&E SHEET	E

FILE NAME	X:\12035-50\03001\TECH\CADD\DRAWINGS\040102.RW.DWG
PLOT DATE	1/24/2014 8:35 AM
PLOT BY	794JGB
PLOT NAMEPLOT SCALE : 1:100
WISDOT/CADD SHEET	75



R/W POINT, COURSE AND COORDINATE TABLE					
POINT	COURSE	STATION	OUT	Y	X
88		61+15.11	40.23' LT.	149097.014	450341.398
	S62°53'19"W 14.55'				
89		61+05.45	51.12' LT.	149090.382	450328.445
	N00°05'33"E 95.16'				
90		61+97.62	74.78' LT	149185.546	450328.599
	N16°05'22"E 391.29"				
91		65+30.16	94.30' RT	149561.506	450437.039
	S73°54'38"E 81.04'				
92		65+65.10	45.00' LT.	149539.047	450514.902
	N77°07'46"E 515.60'				
93		70+73.53	46.08' LT.	149653.898	451017.549
	S01°46'43"W 82.69'				
94		70+59.79	35.00' RT.	149571.250	451014.983
	S77°07'46"W 499.10'				
95		65+60.68	35.00' RT.	149460.074	450528.419
	S14°29'23"W 324.22'				
96		61+89.19	50.00' RT.	149146.163	450447.297
	S70°49'50"W 32.66'				
97		61+71.09	22.82' RT.	149135.440	450416.452
	S62°53'19"W 84.32'				
88		-	-	-	-
95		-	-	-	-
	N77°07'46"E 66.43'				
101		66+27.11	35.00' RT.	149474.871	450593.180
	N77°07'46"E 180.00'				
98		68+07.11	35.00' RT.	149514.967	450768.657
	N77°07'46"E 192.67'				
104		69+99.79	35.00' RT.	149557.885	450956.490
	N77°07'46"E 60.00'				
94		-	-	-	-
98		-	-	-	-
	S06°35'47"W 143.19'				
99		67+59.39	170.00' RT.	149372.729	450752.209
	S77°07'46"W 180.00'				
100		65+79.39	170.00' RT.	149332.634	450576.731
	N06°35'47"E 143.19'				
101		66+27.11	35.00' RT.	-	-
94		-	-	-	-
	S01°46'43"W 144.70'				
102		70+23.19	175.00' RT.	149426.616	451010.492
	S77°07'46"W 60.00'				
103		69+63.19	175.00' RT.	149413.251	450951.999
	N01°46'43"E 144.70'				
104		-	-	-	-
95		-	-	-	-
	N77°07'46"E 439.10'				
104		-	-	-	-

REVISION DATE	4/16/2014 N.C.	DATE	1/24/2014	SCALE, FEET	0 50 100	HWY: NORTHSIDE CONNECTOR	STATE R/W PROJECT: 5991-05-08/93, 5991-07-17	PLAT SHEET	4.07
		GRID FACTOR	1.0000			COUNTY: LA CROSSE	CONSTRUCTION PROJECT: 5991-05-09/95, 5991-07-19	PS&E SHEET	-----