

SCHEDULE OF LANDS & INTERESTS REQUIRED

OWNER'S NAMES ARE SHOWN FOR REFERENCE PURPOSES ONLY AND ARE SUBJECT TO CHANGE PRIOR TO THE TRANSFER OF LAND INTERESTS TO THE DEPARTMENT.

Table with 6 columns: PARCEL NUMBER, OWNER (S), INTEREST REQUIRED, R/W ACRES REQUIRED (NEW, EXISTING, TOTAL), P.L.E. Row 1: 1, CITY OF ONALASKA, FEE, 0.82, 0.82. Row 2: 2, STATE OF WISCONSIN (DEPARTMENT OF NATURAL RESOURCES), PLE, 0.57.

STATION AND OFFSET TABLE

Table with 5 columns: PT. NO., STATION, OFFSET, N, E. Rows 301-315 showing stationing and coordinates.

RIGHT OF WAY COURSES

Table with 3 columns: POINT TO POINT, BEARING, DISTANCE. Rows for points 11075-301, 301-303, and curves RW1, RW2, RW3, RW4.

PLE COURSES

Table with 3 columns: POINT TO POINT, BEARING, DISTANCE. Rows for points 303-306, 306-307, 315-311, 311-309, and curves PLE1, PLE2.

NOTES:

POSITIONS SHOWN ON THIS PLAT ARE WISCONSIN COUNTY COORDINATES, LA CROSSE COUNTY ZONE, NAD83 (1993) IN U.S. SURVEY FEET. VALUES SHOWN ARE GRID COORDINATES, GRID BEARINGS, AND GRID DISTANCES. GRID DISTANCES MAY BE USED AS GROUND DISTANCES.

RIGHT-OF-WAY MONUMENTS ARE TYPE 2 AND WILL BE PLACED PRIOR TO THE COMPLETION OF THE PROJECT.

RIGHT-OF-WAY BOUNDARIES ARE DEFINED WITH COURSES OF THE PERIMETER OF THE HIGHWAY LANDS REFERENCED TO THE U.S. PUBLIC LAND SURVEY SYSTEM OF OTHER "SURVEYS OF PUBLIC RECORD".

RIGHT-OF-WAY REFERENCE LINE IS NOT THE SAME AS THE CONSTRUCTION REFERENCE LINE.

PROPERTY LINES SHOWN ON THIS PLAT ARE DRAWN FROM DATA DERIVED FROM MAPS AND DOCUMENTS OF PUBLIC RECORD AND/OR EXISTING OCCUPATIONAL LINES. THIS PLAT MAY NOT BE A TRUE REPRESENTATION OF EXISTING PROPERTY LINES, EXCLUDING RIGHT-OF-WAY LINES, AND SHOULD NOT BE USED AS A SUBSTITUTE FOR AN ACCURATE FIELD SURVEY.

EXISTING HIGHWAY RIGHT-OF-WAY SHOWN HEREIN IS BASED ON THE FOLLOWING POINTS OF REFERENCE: EXISTING HIGHWAY RIGHT-OF-WAY FOR IH-90 ESTABLISHED FROM PREVIOUS PROJECT 190-112).

DIMENSIONING FOR THE NEW RIGHT-OF-WAY IS MEASURED ALONG AND PERPENDICULAR TO THE RIGHT-OF-WAY REFERENCE LINE.

CURVE RW1 (303-304) L=51.90', R=22708.32' LCH = 51.90' LCB = N64°07'51"E

CURVE RW2 (308-307) L=51.83', R=23058.32' LCH = 51.83' LCB = S63°49'23"W

CURVE RW3 (306-305) L=51.86', R=23048.32' LCH = 51.86' LCB = S63°57'32"W

CURVE RW4 (302-303) L=51.90', R=22708.32' LCH = 51.90' LCB = N64°07'49"E

CURVE PLE1 (307-315) L=20.74', R=23058.32' LCH = 20.74' LCB = N63°51'42"E

CURVE PLE2 (314-306) L=20.74', R=23048.32' LCH = 20.74' LCB = N63°55'12"E

CONVENTIONAL SYMBOLS

Legend for conventional symbols including: FOUND IRON PIPE, MONUMENTED R/W POINT, NON-MONUMENTED R/W POINT, SECTION CORNER MONUMENT, SECTION CORNER SYMBOL, FEE (HATCH VARIES), TEMPORARY LIMITED EASEMENT, PERMANENT LIMITED EASEMENT, R/W BOUNDARY, PARCEL NUMBER, SIGN NUMBER (OFF PREMISE) BUILDING, PROPOSED R/W LINE, EXISTING H.E. LINE, PROPERTY LINE, LOT & TIE LINES, SLOPE INTERCEPTS, CORPORATE LIMITS, NO ACCESS (BY PREVIOUS ACQUISITION/CONTROL), NO ACCESS (BY ACQUISITION), NO ACCESS (BY STATUTORY AUTHORITY), SECTION LINE, QUARTER LINE, SIXTEENTH LINE, EXISTING CENTERLINE, PROPOSED REFERENCE LINE, PARALLEL OFFSET.

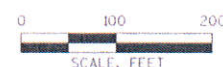
CONVENTIONAL ABBREVIATIONS

Legend for conventional abbreviations including: ACCESS POINT/ DRIVEWAY CONNECTION, ACCESS RIGHTS, ACRES, AND OTHERS, CENTERLINE, CERTIFIED SURVEY MAP CORNER, DOCUMENT, EASEMENT, HIGHWAY EASEMENT, LAND CONTRACT, PAGE, PERMANENT LIMITED EASEMENT, PLE, PROPERTY LINE, RECORDED AS, REFERENCE LINE, AP, AR, AC, ET. AL., C/L, CSM, COR., DOC., EASE., H.E., L.C., P., PLE, PL, (100'), R/L, RELEASE OF RIGHTS REMAINING, RIGHT-OF-WAY SECTION, STATION, TEMPORARY LIMITED EASEMENT, VOLUME, ROR, REM., R/W, SEC., STA., TLE, V., LCH, LCB, R, D, DELTA, L, TAN.

CURVE DATA

Legend for curve data including: LONG CHORD, LONG CHORD BEARING, RADIUS, DEGREE OF CURVE, CENTRAL ANGLE OR DELTA, LENGTH OF CURVE, TANGENT.

GN



TRANSPORTATION PROJECT PLAT NO.: 1071-06-22-4.01

PART OF THE NE 1/4 OF NW 1/4 SECTION 16, T16N-R7W, CITY OF ONALASKA, LA CROSSE COUNTY, WISCONSIN

RELOCATION ORDER USH 53/STH 35-THEATER RD., LA CROSSE COUNTY

TO PROPERLY ESTABLISH, LAY OUT, WIDEN, ENLARGE, EXTEND, CONSTRUCT, RECONSTRUCT, IMPROVE, OR MAINTAIN A PORTION OF THE HIGHWAY DESIGNATED ABOVE, THE STATE OF WISCONSIN DEPARTMENT OF TRANSPORTATION DEEMS IT NECESSARY TO RELOCATE OR CHANGE SAID HIGHWAY AND ACQUIRE CERTAIN LANDS AND INTERESTS OR RIGHTS IN LANDS FOR THE ABOVE PROJECT.

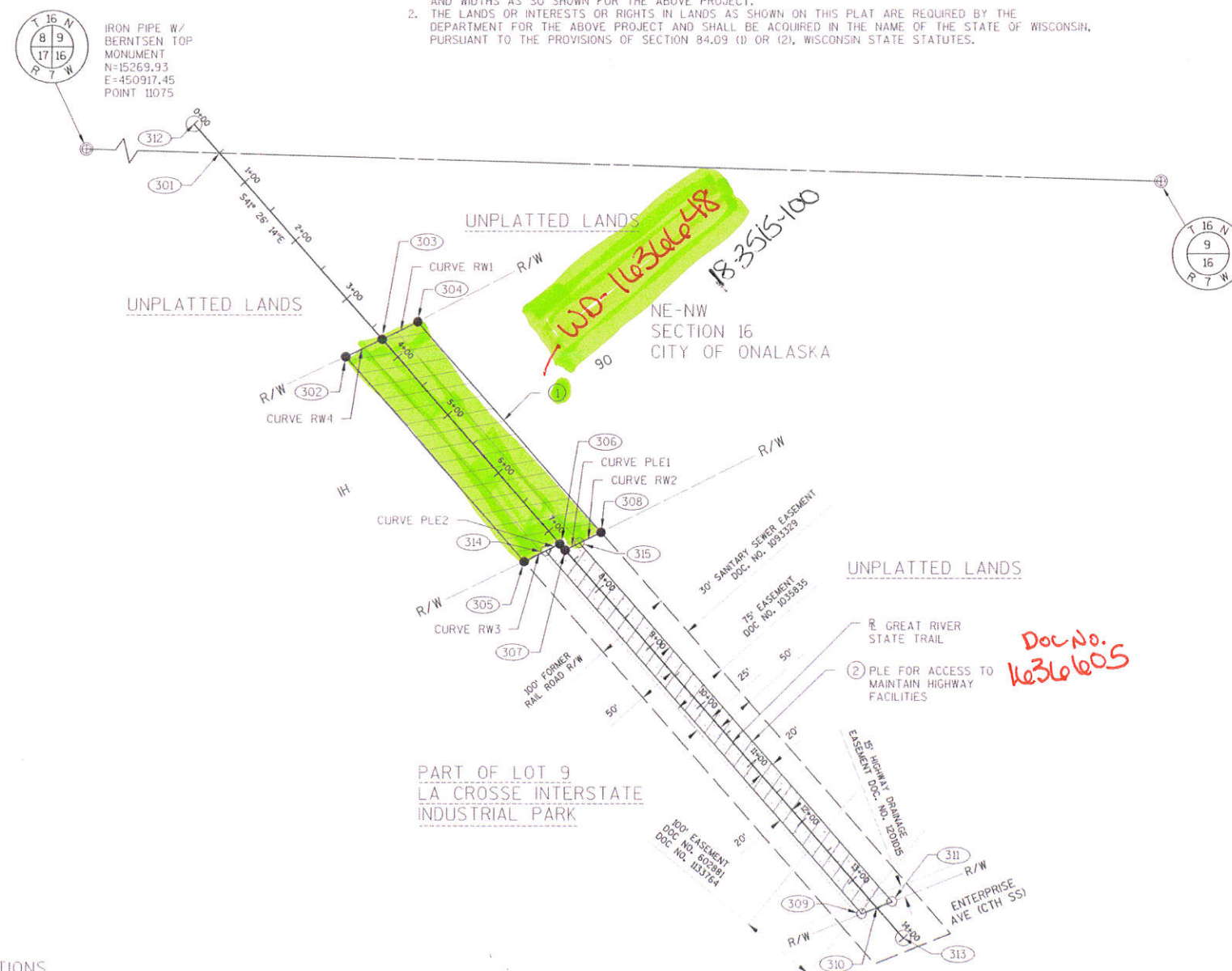
TO EFFECT THIS CHANGE, PURSUANT TO AUTHORITY GRANTED UNDER SECTION 84.02 (3) AND 84.09, WISCONSIN STATUTES, THE DEPARTMENT OF TRANSPORTATION HEREBY ORDERS THAT:

- 1. THAT PORTION OF SAID HIGHWAY AS SHOWN ON THIS PLAT IS LAID OUT AND ESTABLISHED TO THE LINES AND WIDTHS AS SO SHOWN FOR THE ABOVE PROJECT.
2. THE LANDS OR INTERESTS OR RIGHTS IN LANDS AS SHOWN ON THIS PLAT ARE REQUIRED BY THE DEPARTMENT FOR THE ABOVE PROJECT AND SHALL BE ACQUIRED IN THE NAME OF THE STATE OF WISCONSIN, PURSUANT TO THE PROVISIONS OF SECTION 84.09 (1) OR (2), WISCONSIN STATE STATUTES.

DOCUMENT # 1036134

ACCEPTED FOR RECORDING IN OFFICE OF THE REGISTER OF DEEDS IN LA CROSSE COUNTY WISCONSIN AT 1:54 ON 2/24/14 FILED IN TPP CAB., PG. 31A. Signature of Cheryl A. McBride, REGISTER OF DEEDS.

RESERVED FOR REGISTER OF DEEDS PROJECT NUMBER 1071-06-22-4.01



Doc No: 1036134-48



Professional information for K. Singh & Associates, Inc. including contact details, a certification statement, and signatures of Paul A. Kubicek and Jennifer Queram with dates.

4

136