

R/W PROJECT NUMBER 5991-05-08, 5991-05-93 AND 5991-07-17	SHEET NUMBER 4.01	TOTAL SHEETS 7
FEDERAL PROJECT NUMBER		
PLAT OF RIGHT-OF-WAY REQUIRED FOR CITY OF LA CROSSE, DAIRYLAND POWER TRAIL CITY OF LA CROSSE, NORTHSIDE CONNECTOR TRAIL LA CROSSE-ONALASKA, OAK STREET CONNECTION NON HIGHWAY LA CROSSE COUNTY		
CONSTRUCTION PROJECT NUMBER 5991-05-09, 5991-05-95 AND 5991-07-19		

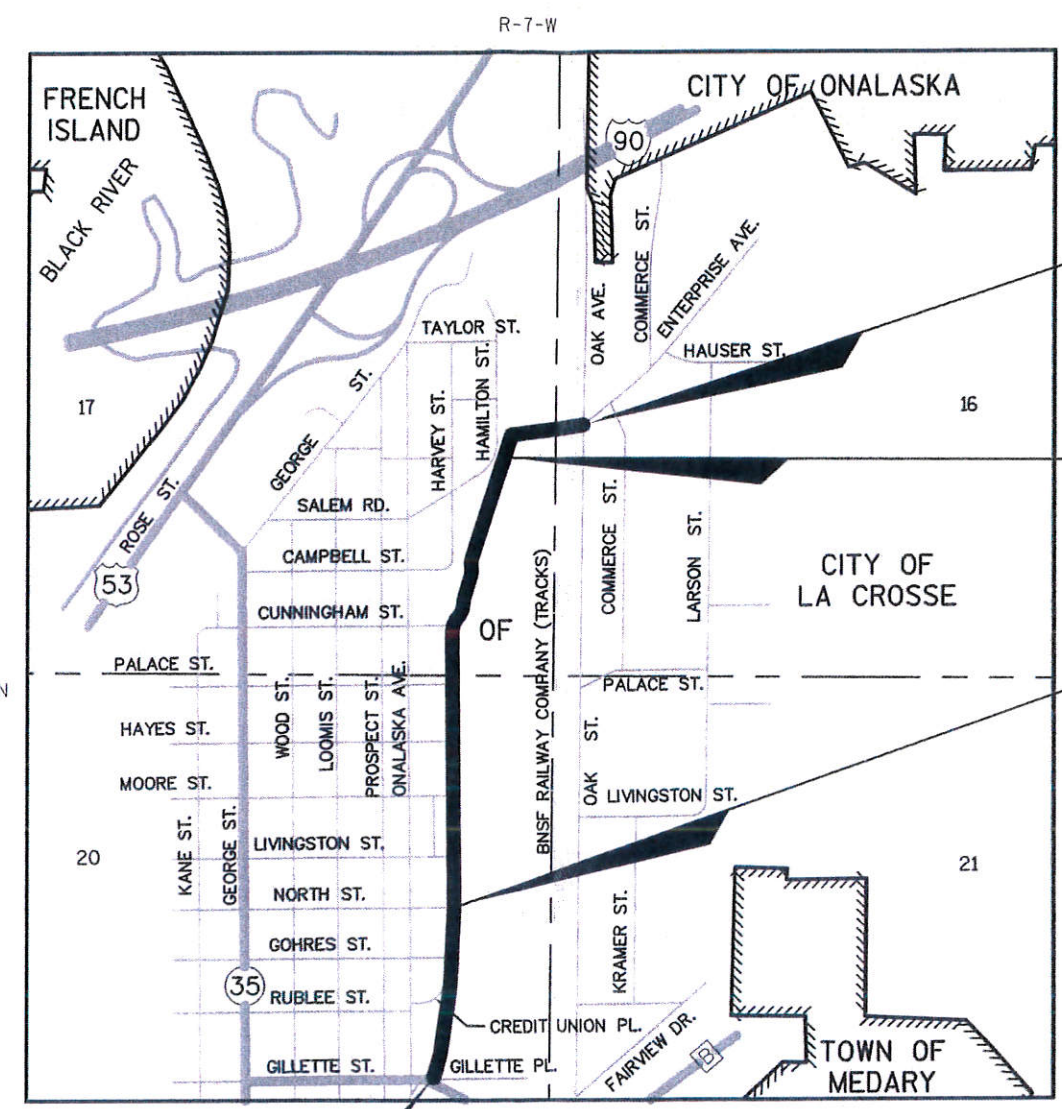
CONVENTIONAL ABBREVIATIONS			
ACCESS POINT / DRIVEWAY CONNECTION	AP	REFERENCE LINE	
ACCESS RIGHTS	AR	RELEASE OF RIGHTS	
ACRES	AC.	REMAINING	
AND OTHERS	ET.AL.	RIGHT-OF-WAY	
CENTERLINE	C/L	SECTION	
CERTIFIED SURVEY MAP	CSM	STATION	
CORNER	COR.	TEMPORARY LIMITED EASEMENT	
DOCUMENT	DOC.	VOLUME	
EASEMENT	EASE.	MONUMENT POST	
HIGHWAY EASEMENT	H.E.	CURVE DATA	
LAND CONTRACT	LC	LONG CHORD	LCH
MONUMENT	MON.	LONG CHORD BEARING	LCB
PAGE	P.	RADIUS	R
PERMANENT LIMITED EASEMENT	PLE	DEGREE OF CURVE	D
PROPERTY LINE	PL	CENTRAL ANGLE OR DELTA	DELTA
RECORDED AS	(100)	LENGTH OF CURVE	L
		TANGENT	TAN

CONVENTIONAL SYMBOLS		
FOUND IRON PIPE/PIN	IP	PROPOSED R/W LINE
R/W MONUMENT	*SETI	EXISTING H.E. LINE
R/W STANDARD	△ (SET)	PROPERTY LINE
SIGN	ISIGN	LOT & TIE LINES
SECTION CORNER MONUMENT	●	SLOPE INTERCEPTS
SECTION CORNER SYMBOL	⊙	CORPORATE LIMITS
FEE (HATCH VARIES)		NO ACCESS (BY PREVIOUS ACQUISITION/CONTROL)
TEMPORARY LIMITED EASEMENT		NO ACCESS (BY ACQUISITION)
PERMANENT LIMITED EASEMENT		NO ACCESS (BY STATUTORY AUTHORITY)
R/W POINT	43	SECTION LINE
PARCEL NUMBER	63	QUARTER LINE
UTILITY NUMBER	92	SIXTEENTH LINE
SIGN NUMBER (OFF PREMISE)	21-1	EXISTING CENTERLINE
BUILDING	⌂	PROPOSED REFERENCE LINE
		PARALLEL OFFSET

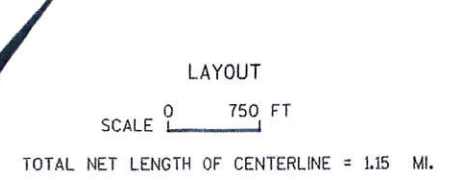
CONVENTIONAL UTILITY SYMBOLS		
WATER	—W—	NON COMPENSABLE
GAS	—G—	COMPENSABLE
TELEPHONE	—T—	COMPENSABLE
OVERHEAD	—OH—	COMPENSABLE
TRANSMISSION LINES	—E—	COMPENSABLE
ELECTRIC	—E—	COMPENSABLE
CABLE TELEVISION	—TV—	COMPENSABLE
FIBER OPTIC	—FO—	COMPENSABLE
SANITARY SEWER	—SAM—	COMPENSABLE
STORM SEWER	—SS—	COMPENSABLE
POWER POLE	⊙	COMPENSABLE
TELEPHONE POLE	⊙	COMPENSABLE
TELEPHONE PEDESTAL	⊗	COMPENSABLE
ELECTRIC TOWER	⊗	COMPENSABLE



END RELOCATION ORDER  
PROJECT 5991-07-17  
STA 70+85.55  
Y = 149,607.824  
X = 451,032.689  
2,221.90' NORTH AND 126.51' EAST FROM  
SE COR SEC 17, T-16-N, R-7-W

END RELOCATION ORDER PROJECT 5991-05-93  
BEGIN RELOCATION ORDER PROJECT 5991-07-17  
STA 59+50.00  
Y = 148,927.637  
X = 450,337.116  
1,541.71' NORTH AND 569.06' WEST FROM  
SE COR SEC 17, T-16-N, R-7-W

END RELOCATION ORDER PROJECT 5991-05-08  
BEGIN RELOCATION ORDER PROJECT 5991-05-93  
STA 25+00.00  
Y = 145,559.291  
X = 449,892.427  
1,826.63' SOUTH AND 1,013.75' WEST FROM  
NE COR SEC 20, T-16-N, R-7-W



**NOTES**

COORDINATES AND BEARINGS ON THIS PLAT ARE ORIENTED TO THE WISCONSIN COUNTY COORDINATE SYSTEM, LA CROSSE COUNTY ZONE, NAD 83 (1991) ADJUSTMENT. THE COORDINATES SHOWN ARE GRID COORDINATES AND ARE TO BE USED AS GRID OR GROUND VALUES ON THIS PLAT.

RIGHT-OF-WAY MONUMENTS ARE 3/4" X 24" REBAR AND WILL BE PLACED PRIOR TO THE COMPLETION OF THE PROJECT.

RIGHT-OF-WAY BOUNDARIES ARE DEFINED WITH COURSES OF THE PERIMETER OF THE HIGHWAY LANDS REFERENCED TO THE U.S. PUBLIC LAND SURVEY SYSTEM OR OTHER SURVEYS OF PUBLIC RECORD.

BEGIN RELOCATION ORDER  
PROJECT 5991-05-08  
STA 9+85.36  
Y = 144,115.055  
X = 449,753.461  
3,270.87' SOUTH AND 1,152.72' WEST FROM  
NE COR SEC 20, T-16-N, R-7-W

REVISION DATE	BY
4/16/2014 N.C.	

**MEAD HUNT**

SEAN M. WALSH  
S-2016

STATE OF WISCONSIN  
CITY OF LA CROSSE

APPROVED FOR THE CITY OF LA CROSSE  
DATE: 2/3/2014 *Tina K. Kahl*  
(Signature)

140

# SCHEDULE OF LANDS & INTERESTS REQUIRED

OWNER'S NAMES ARE SHOWN FOR REFERENCE PURPOSES ONLY AND ARE SUBJECT TO CHANGE PRIOR TO THE TRANSFER OF LAND INTERESTS TO THE CITY OF LA CROSSE.

AREAS SHOWN IN THE TOTAL ACRES COLUMN MAY BE APPROXIMATE AND ARE DERIVED FROM TAX ROLLS OR OTHER AVAILABLE SOURCES AND MAY NOT INCLUDE LANDS OF THE OWNER WHICH ARE NOT CONTIGUOUS TO THE AREA TO BE ACQUIRED.

4

PARCEL NUMBER	R/W PROJECT	OWNER(S)	INTEREST REQUIRED	EX R/W ACRES REQUIRED			T.L.E	SHEET
				NEW	EXISTING	P.E.		
01	5991-05-08	MARK HALVERSON & NANCY J HALVERSON	TLE	0.00	-	-	0.01	4.03
03		BNSF RAILWAY COMPANY	PE/TLE	0.00	-	3.45	0.75	4.03, 4.04, 4.05, 4.07
	5991-05-08		PE	0.00	-	0.59	-	
	5991-05-93		PE	0.00	-	0.75	-	
	5991-07-17		PE/TLE	0.00	-	2.11	0.75	
04	5991-05-08	KENNETH P PETERSON & REBECCA A STACKHOUSE	FEE/TLE	0.12	-	-	0.09	4.03, 4.04
06	5991-05-93	QUADRAPAR DEVELOPMENT COMPANY	FEE/TLE	0.09	-	-	0.09	4.06

4

## SCHEDULE OF UTILITY INTERESTS REQUIRED

UTILITY NUMBER	OWNER(S)	INTEREST REQUIRED	SHEET
81	XCEL ENERGY - GAS	RELEASE OF RIGHTS	4.03, 4.04
83	XCEL ENERGY - ELECTRIC	RELEASE OF RIGHTS	4.03, 4.04, 4.05
84	CENTURYLINK	RELEASE OF RIGHTS	4.03, 4.04, 4.05, 4.06, 4.07
85	BNSF RAILWAY COMPANY	RELEASE OF RIGHTS	4.03

REVISION DATE	4/16/2014	-----	-----
-----	-----	-----	-----
-----	-----	-----	-----

DATE	1/24/2014
GRID FACTOR	1.0000



HWY:	NORTHSIDE CONNECTOR
COUNTY:	LA CROSSE

STATE R/W PROJECT:	5991-05-08/93, 5991-07-17
CONSTRUCTION PROJECT:	5991-05-09/95, 5991-07-19

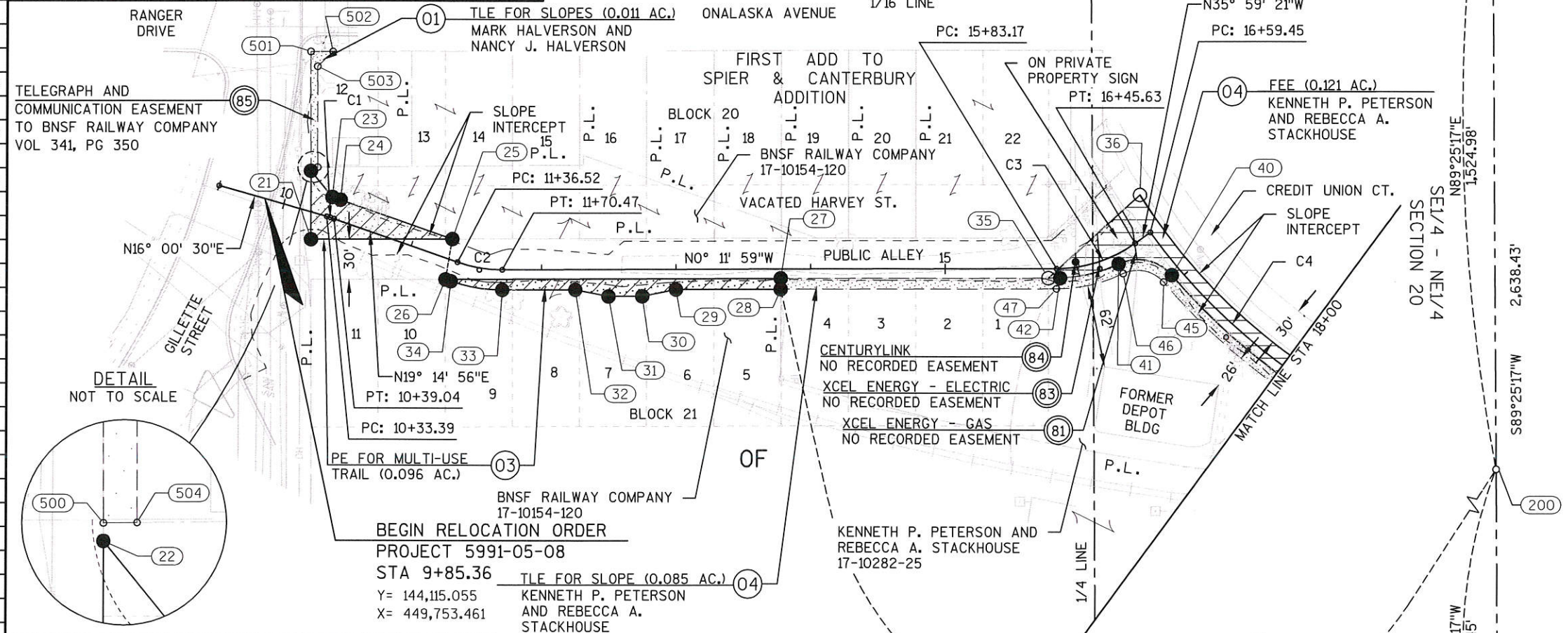
PLAT SHEET	4.02
PS&E SHEET	-----

E

R/W POINT, COURSE AND COORDINATE TABLE					
POINT	COURSE	STATION	OUT	Y	X
21		10+26.86	19.45' RT.	144149.557	449783.694
	S89°47'19"W 50.91'				
22		10+12.64	29.34' LT.	144149.370	449732.782
	N50°39'22"E 25.22'				
23		10+33.39	15.00' LT.	144165.360	449752.288
24		10+39.04	15.00' LT.	144171.558	449754.258
	N19°14'56"E 88.13'				
25		11+27.17	15.00' LT.	144254.760	449783.311
	S00°12'30"E 105.20'				
21		-	-	-	-
25		-	-	-	-
	S80°28'47"E 30.44'				

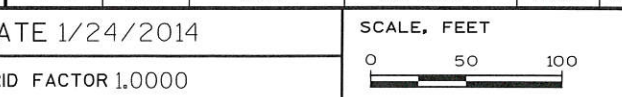
R/W POINT, COURSE AND COORDINATE TABLE					
POINT	COURSE	STATION	OUT	Y	X
22		-	-	-	-
	S89°47'19"W 2.68'				
500		10+11.89	31.92' LT.	144149.360	449730.100
	S89°47'19"W 86.11'				
501		9+87.84	114.60' LT.	144149.042	449643.991
	N00°12'30"W 16.36'				
502		10+03.55	119.17' RT.	144165.403	449643.931
	S44°14'16"E 15.80'				
503		9+95.71	105.45' LT.	144154.082	449654.955
	N89°47'19"E 75.10'				
504		10+16.68	33.35' LT.	144154.359	449730.047
	S00°36'19"E 5.00'				

26		11+32.32	15.00' RT.	144249.726	449813.330
	N00°12'30"W 249.49'				
27		13+77.70	7.00' RT.	144499.213	449812.423
	N89°49'04"E 8.00'				
28		13+77.70	15.00' RT.	144499.238	449820.422
	S00°11'59"E 77.70'				
29		13+00.00	15.00' RT.	144421.542	449820.693
	S11°30'34"E 25.50'				
30		12+75.00	20.00' RT.	144396.559	449825.780
	S00°11'59"E 25.00'				
31		12+50.00	20.00' RT.	144371.560	449825.867
	S11°06'37"W 25.50'				
32		12+25.00	15.00' RT.	144346.542	449820.955
	S00°11'59"E 54.53'				
33		11+70.47	15.00' RT.	144292.009	449821.145
34		11+36.52	15.00' RT.	144253.696	449814.716
	S19°14'56"W 4.21'				
26		-	-	-	-
27		-	-	-	-
	N00°12'31"W 199.39'				
35		15+77.09	6.97' RT.	144698.604	449811.696
	N42°25'35"W 91.97'				
36		NA	NA	144766.493	449749.647
42		15+85.65	7.00' RT.	144707.340	449811.664
	S00°12'31"E 8.74'				
35		-	-	-	-
47		15+83.17	15.00' RT.	144704.708	449819.707
	S00°11'59"E 205.47'				
28		-	-	-	-
27		-	-	-	-
	N00°12'31"W 208.13'				
42		-	-	-	-
29		-	-	-	-
	S00°11'59"E 283.17'				
40		16+94.21	7.00' RT.	144790.404	449809.348
41		16+27.88	7.00' RT.	144750.902	449801.029
45		16+94.21	15.00' RT.	144784.312	449814.533
46		16+27.88	15.00' RT.	144754.386	449808.231



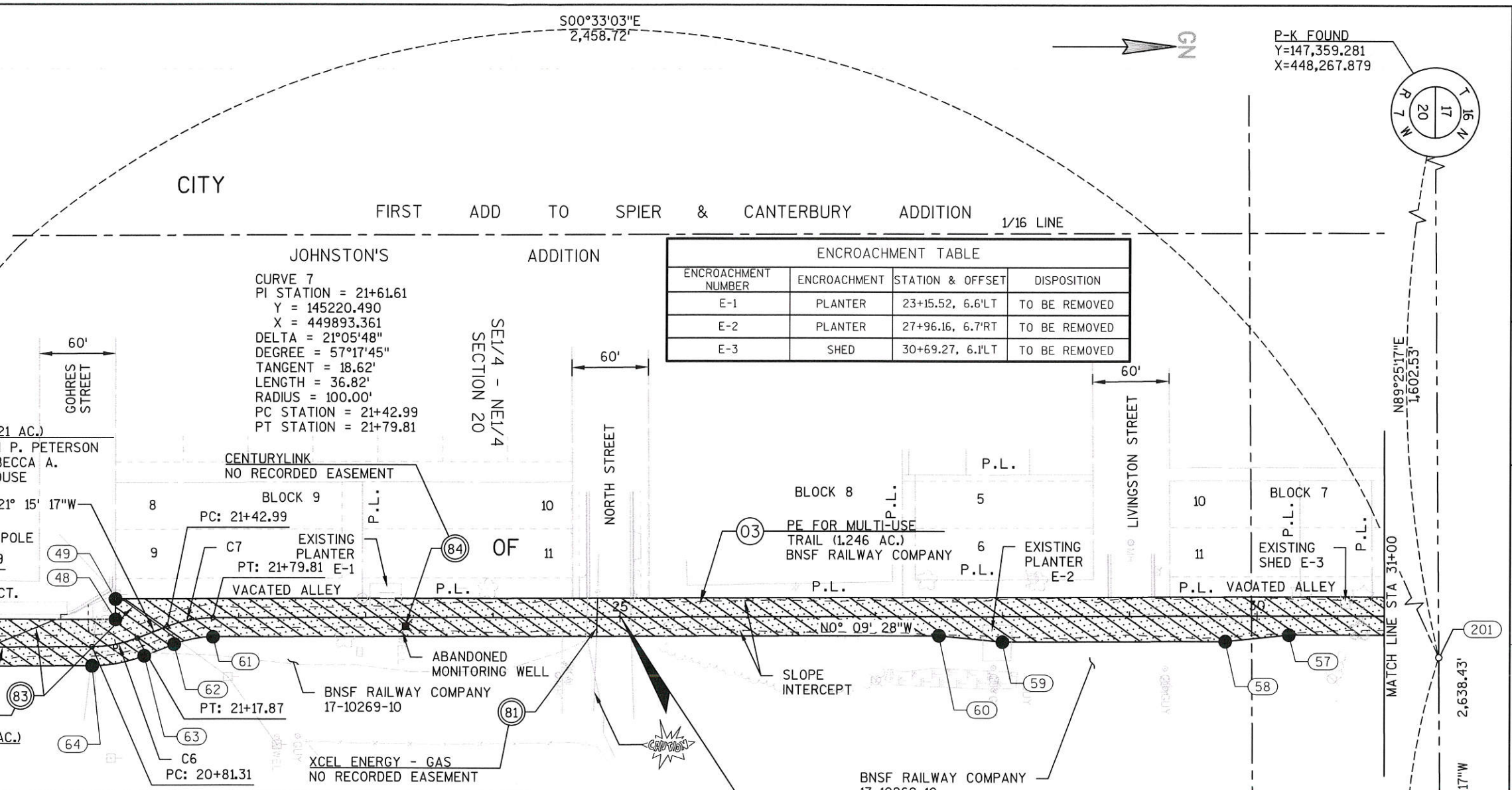
CURVE TABLE					
CURVE	LENGTH	CHORD LENGTH	CHORD BEARING	RADIUS	DELTA
23-24	6.50'	6.50'	N17°37'43"E	115.00'	3°14'26"
33-34	39.04'	38.85'	S09°31'28"W	115.00'	19°26'54"
36-37	210.48'	208.42'	N43°49'31"E	433.37'	27°49'38"
39-40	157.80'	157.02'	S39°44'38"W	458.61'	19°42'52"
40-41	43.44'	40.37'	S11°53'34"W	33.00'	75°24'59"
41-42	45.18'	44.84'	S13°43'12"E	107.00'	24°11'27"
44-45	160.55'	159.76'	S39°44'38"W	466.61'	19°42'52"
45-46	32.91'	30.58'	S11°53'34"W	25.00'	75°24'59"
46-47	51.41'	50.99'	S13°00'27"E	115.00'	25°36'56"

REVISION DATE	4/16/2014
DATE	1/24/2014
GRID FACTOR	1.0000



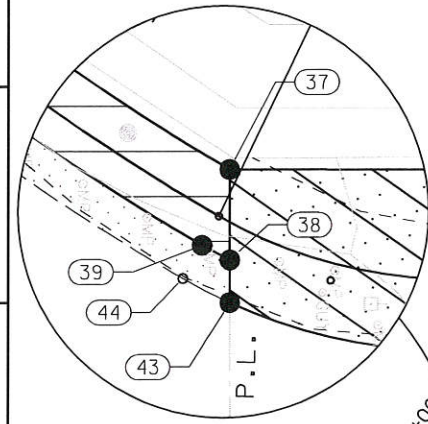
HWY: NORTHSIDE CONNECTOR	STATE R/W PROJECT: 5991-05-08/93, 5991-07-17	PLAT SHEET	4.03
COUNTY: LA CROSSE	CONSTRUCTION PROJECT: 5991-05-09/95, 5991-07-19	PS&E SHEET	E

CURVE TABLE					
CURVE	LENGTH	CHORD LENGTH	CHORD BEARING	RADIUS	DELTA
36-37	210.48'	208.42'	N43°49'31"E	433.37'	27°49'38"
38-39	6.54'	6.54'	S28°08'05"W	107.00'	3°30'13"
39-40	157.80'	157.02'	S39°44'38"W	458.61'	19°42'52"
43-44	10.99'	10.99'	S27°08'51"W	115.00'	5°28'40"
44-45	160.55'	159.76'	S39°44'38"W	466.61'	19°42'52"
61-62	31.30'	31.12'	S10°42'22"E	85.00'	21°05'48"
63-64	42.05'	41.82'	S10°46'45"E	115.00'	20°57'02"
65-43	49.60'	49.22'	S12°03'08"W	115.00'	24°42'46"



ENCROACHMENT TABLE			
ENCROACHMENT NUMBER	ENCROACHMENT	STATION & OFFSET	DISPOSITION
E-1	PLANTER	23+15.52, 6.6'LT	TO BE REMOVED
E-2	PLANTER	27+96.16, 6.7'RT	TO BE REMOVED
E-3	SHED	30+69.27, 6.1'LT	TO BE REMOVED

**CURVE 7**  
 PI STATION = 21+61.61  
 Y = 145220.490  
 X = 449893.361  
 DELTA = 21°05'48"  
 DEGREE = 57°17'45"  
 TANGENT = 18.62'  
 LENGTH = 36.82'  
 RADIUS = 100.00'  
 PC STATION = 21+42.99  
 PT STATION = 21+79.81



R/W POINT, COURSE AND COORDINATE TABLE					
POINT	COURSE	STATION	OUT	Y	X
43		18+59.16	15.00' RT.	144916.933	449921.692
	S89°50'30"W 27.73'				
37		18+46.63	9.52' LT.	144916.857	449893.967
	N00°08'54"E 245.58'				
48		21+04.45	19.16' LT.	145162.433	449894.603
	S89°50'45"W 16.08'				
49		21+10.17	34.70' LT.	145162.390	449878.521
	N00°09'28"W 1258.08'				
50		33+81.33	83.80' LT.	146420.461	449875.054
56		32+06.26	15.00' RT.	146265.595	449905.481
	S00°09'28"E 181.26'				
57		30+25.00	15.00' RT.	146084.336	449905.981
	S05°52'07"E 50.25'				
58		29+75.00	20.00' RT.	146034.350	449911.118
	S00°09'28"E 175.00'				
59		28+00.00	20.00' RT.	145859.350	449911.601

R/W POINT, COURSE AND COORDINATE TABLE					
POINT	COURSE	STATION	OUT	Y	X
59		-	-	-	-
	S05°33'10"W 50.25'				
60		27+50.00	15.00' RT.	145809.337	449906.738
	S00°09'28"E 570.19'				
61		21+79.81	15.00' RT.	145239.152	449908.310
62		21+42.99	15.00' RT.	145208.573	449914.091
	S21°15'17"E 25.12'				
63		21+17.87	15.00' RT.	145185.160	449923.198
64		20+81.31	15.00' RT.	145144.081	449931.019
	S00°18'14"E 179.02'				
65		19+02.29	15.00' RT.	144965.066	449931.969
	N89°50'30"E 18.86'				
37		-	-	-	-
	N89°50'30"E 8.87'				
38		18+55.71	7.00' RT.	144916.909	449912.826
	N89°50'30"E 8.87'				

R/W POINT, COURSE AND COORDINATE TABLE					
POINT	COURSE	STATION	OUT	Y	X
39		18+49.60	7.00' RT.	144911.140	449909.741
44		18+49.60	15.00' RT.	144907.153	449916.677

**CURVE 4**  
 PI STATION = 17+55.95  
 Y = 144830.958  
 X = 449855.585  
 DELTA = 24°07'27"  
 DEGREE = 12°41'14"  
 TANGENT = 96.50'  
 LENGTH = 190.15'  
 RADIUS = 451.61'  
 PC STATION = 16+59.45  
 PT STATION = 18+49.60

**CURVE 5**  
 PI STATION = 18+76.57  
 Y = 144938.014  
 X = 449917.112  
 DELTA = 30°11'26"  
 DEGREE = 57°17'45"  
 TANGENT = 26.97'  
 LENGTH = 52.69'  
 RADIUS = 100.00'  
 PC STATION = 18+49.60  
 PT STATION = 19+02.29

**CURVE 6**  
 PI STATION = 20+99.79  
 Y = 145162.490  
 X = 449915.921  
 DELTA = 20°57'02"  
 DEGREE = 57°17'45"  
 TANGENT = 18.49'  
 LENGTH = 36.57'  
 RADIUS = 100.00'  
 PC STATION = 20+81.31  
 PT STATION = 21+17.87

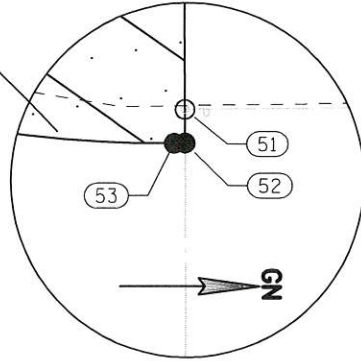
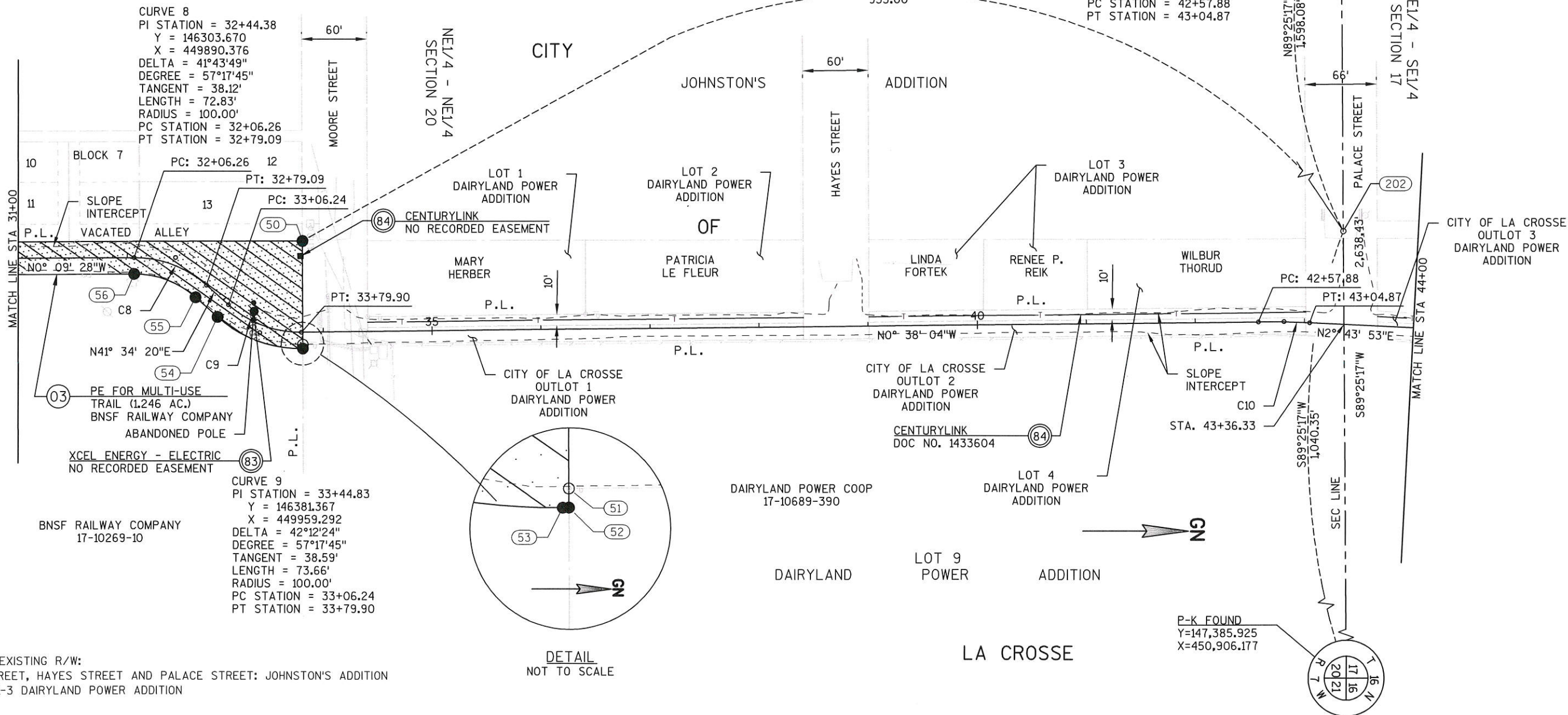
END RELOCATION ORDER PROJECT 5991-05-08  
 BEGIN RELOCATION ORDER PROJECT 5991-05-93  
 STA 25+00.00  
 Y = 145,559.291  
 X = 449,892.427

**LA CROSSE**

P-K FOUND  
 Y=147,385.925  
 X=450,906.177

REVISION DATE	4/16/2014	DATE	1/24/2014	SCALE, FEET	0 50 100	HWY:	NORTHSIDE CONNECTOR	STATE R/W PROJECT:	5991-05-08/93, 5991-07-17	PLAT SHEET	4.04
		GRID FACTOR	1.0000			COUNTY:	LA CROSSE	CONSTRUCTION PROJECT:	5991-05-09/95, 5991-07-19	PS&E SHEET	

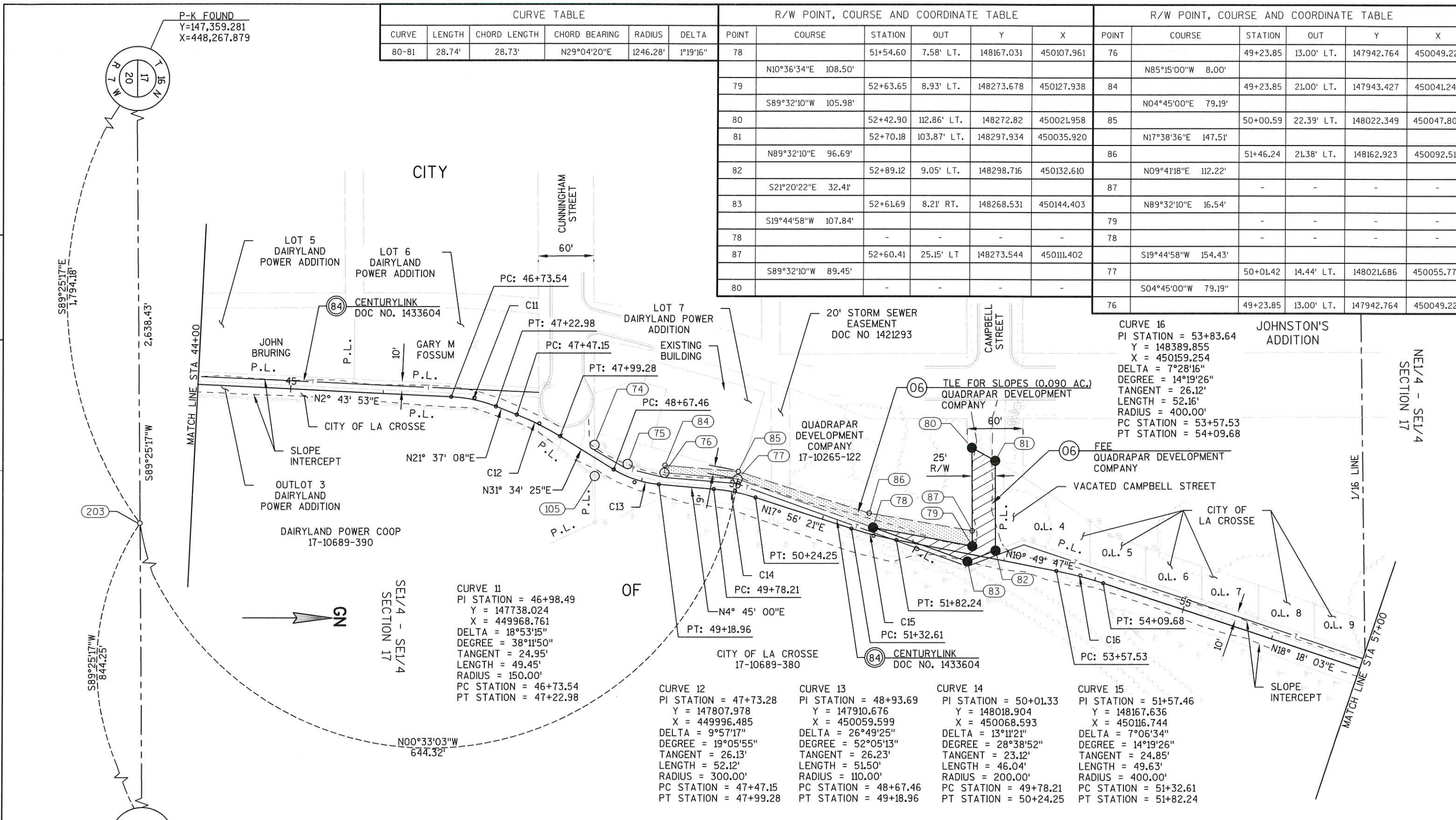
R/W POINT, COURSE AND COORDINATE TABLE						CURVE TABLE					
POINT	COURSE	STATION	OUT	Y	X	CURVE	LENGTH	CHORD LENGTH	CHORD BEARING	RADIUS	DELTA
49		21+10.17	34.70' LT.	145162.390	449878.521	53-54	84.7'	82.81'	S20°28'08"W	115.00'	42°12'24"
	N00°09'28"W 1258.08"					55-56	61.9'	60.55'	S20°42'26"W	85.00'	41°43'49"
50		33+81.33	83.80' LT.	146420.461	449875.054						
	N89°32'10"E 98.80'										
52		33+81.04	15.00' RT.	146421.260	449973.851						
	S00°38'04"E 1.14'										
53		33+79.90	15.00' RT.	146420.125	449973.864						
54		33+06.24	15.00' RT.	146342.542	449944.904						
	S41°34'20"W 27.15'										
55		32+79.09	15.00' RT.	146322.232	449926.891						
56		32+06.26	15.00' RT.	146265.595	449905.481						
	S00°09'28"E 181.26'										
57		30+25.00	15.00' RT.	146084.336	449905.981						



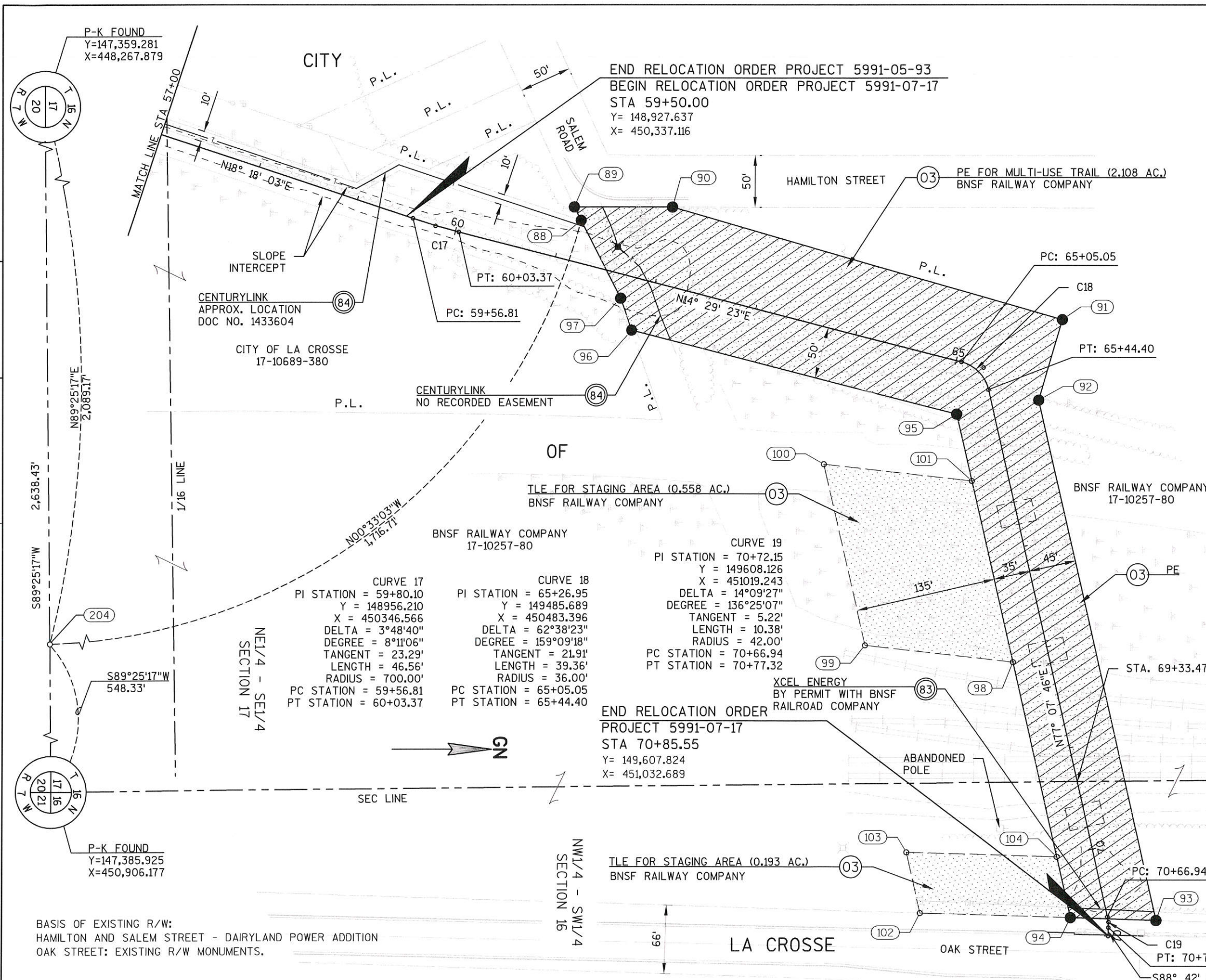
BASIS OF EXISTING R/W:  
 MOORE STREET, HAYES STREET AND PALACE STREET: JOHNSTON'S ADDITION  
 OUTLOTS 1-3 DAIRYLAND POWER ADDITION

REVISION DATE	4/16/2014 N.C.	DATE	1/24/2014	SCALE, FEET	HWY: NORTHSIDE CONNECTOR	STATE R/W PROJECT: 5991-05-08/93, 5991-07-17	PLAT SHEET	4.05
		GRID FACTOR	1.0000	0 50 100	COUNTY: LA CROSSE	CONSTRUCTION PROJECT: 5991-05-09/95, 5991-07-19	PS&E SHEET	-----

CURVE TABLE						R/W POINT, COURSE AND COORDINATE TABLE						R/W POINT, COURSE AND COORDINATE TABLE					
CURVE	LENGTH	CHORD LENGTH	CHORD BEARING	RADIUS	DELTA	POINT	COURSE	STATION	OUT	Y	X	POINT	COURSE	STATION	OUT	Y	X
80-81	28.74'	28.73'	N29°04'20"E	1246.28'	1°19'16"	78		51+54.60	7.58' LT.	148167.031	450107.961	76		49+23.85	13.00' LT.	147942.764	450049.221
							N10°36'34"E	108.50'					N85°15'00"W	8.00'			
						79		52+63.65	8.93' LT.	148273.678	450127.938	84		49+23.85	21.00' LT.	147943.427	450041.249
							S89°32'10"W	105.98'					N04°45'00"E	79.19'			
						80		52+42.90	112.86' LT.	148272.82	450021.958	85		50+00.59	22.39' LT.	148022.349	450047.807
						81		52+70.18	103.87' LT.	148297.934	450035.920						
							N89°32'10"E	96.69'				86		51+46.24	21.38' LT.	148162.923	450092.516
						82		52+89.12	9.05' LT.	148298.716	450132.610						
							S21°20'22"E	32.41'				87		-	-	-	-
						83		52+61.69	8.21' RT.	148268.531	450144.403						
						78		-	-	-	-	79		-	-	-	-
							S19°44'58"W	107.84'				78		-	-	-	-
						87		52+60.41	25.15' LT	148273.544	450111.402						
							S89°32'10"W	89.45'				77		50+01.42	14.44' LT.	148021.686	450055.779
						80		-	-	-	-						
												76		49+23.85	13.00' LT.	147942.764	450049.221



P-K FOUND Y=147,359.281 X=448,267.879	P-K FOUND Y=147,385.925 X=450,906.177	REVISION DATE 4/16/2014 N.C.	DATE 1/24/2014	SCALE, FEET 0 50 100	HWY: NORTHSIDE CONNECTOR	STATE R/W PROJECT: 5991-05-08/93, 5991-07-17	PLAT SHEET 4.06
BASIS OF EXISTING R/W: DAIRYLAND POWER ADDITION			GRID FACTOR 1.0000	COUNTY: LA CROSSE	CONSTRUCTION PROJECT: 5991-05-09/95, 5991-07-19	PS&E SHEET	<b>E</b>



R/W POINT, COURSE AND COORDINATE TABLE					
POINT	COURSE	STATION	OUT	Y	X
88		61+15.11	40.23' LT.	149097.014	450341.398
	S62°53'19"W 14.55'				
89		61+05.45	51.12' LT.	149090.382	450328.445
	N00°05'33"E 95.16'				
90		61+97.62	74.78' LT	149185.546	450328.599
	N16°05'22"E 391.29"				
91		65+30.16	94.30' RT	149561.506	450437.039
	S73°54'38"E 81.04'				
92		65+65.10	45.00' LT.	149539.047	450514.902
	N77°07'46"E 515.60'				
93		70+73.53	46.08' LT.	149653.898	451017.549
	S01°46'43"W 82.69'				
94		70+59.79	35.00' RT.	149571.250	451014.983
	S77°07'46"W 499.10'				
95		65+60.68	35.00' RT.	149460.074	450528.419
	S14°29'23"W 324.22'				
96		61+89.19	50.00' RT.	149146.163	450447.297
	S70°49'50"W 32.66'				
97		61+71.09	22.82' RT.	149135.440	450416.452
	S62°53'19"W 84.32'				
88		-	-	-	-
95		-	-	-	-
	N77°07'46"E 66.43'				
101		66+27.11	35.00' RT.	149474.871	450593.180
	N77°07'46"E 180.00'				
98		68+07.11	35.00' RT.	149514.967	450768.657
	N77°07'46"E 192.67'				
104		69+99.79	35.00' RT.	149557.885	450956.490
	N77°07'46"E 60.00'				
94		-	-	-	-
98		-	-	-	-
	S06°35'47"W 143.19'				
99		67+59.39	170.00' RT.	149372.729	450752.209
	S77°07'46"W 180.00'				
100		65+79.39	170.00' RT.	149332.634	450576.731
	N06°35'47"E 143.19'				
101		66+27.11	35.00' RT.	-	-
94		-	-	-	-
	S01°46'43"W 144.70'				
102		70+23.19	175.00' RT.	149426.616	451010.492
	S77°07'46"W 60.00'				
103		69+63.19	175.00' RT.	149413.251	450951.999
	N01°46'43"E 144.70'				
104		-	-	-	-
95		-	-	-	-
	N77°07'46"E 439.10'				
104		-	-	-	-

REVISION DATE	4/16/2014 N.C.	DATE	1/24/2014	SCALE, FEET	0 50 100	HWY: NORTHSIDE CONNECTOR	STATE R/W PROJECT: 5991-05-08/93, 5991-07-17	PLAT SHEET	4.07
		GRID FACTOR	1.0000			COUNTY: LA CROSSE	CONSTRUCTION PROJECT: 5991-05-09/95, 5991-07-19	PS&E SHEET	-----