

SCHEDULE OF LANDS & INTERESTS REQUIRED

Table with 8 columns: PARCEL NUMBER, OWNER (S), INTEREST REQUIRED, R/W ACRES REQUIRED (NEW, EXISTING, TOTAL), T.L.E. ACRES, P.L.E. ACRES. Rows include parcels 11-14 and 70.

NOTE: OWNER'S NAMES ARE SHOWN FOR REFERENCE PURPOSES ONLY AND ARE SUBJECT TO CHANGE PRIOR TO THE TRANSFER OF LAND INTERESTS TO THE DEPARTMENT.

TRANSPORTATION PROJECT PLAT NO: 7190-06-21 - 4.03

LOCATED IN LOTS 1, 2, 3, 4, AND 5 IN BLOCK 4 OF THE SUNSET BOULEVARD ADDITION, IN AND INCLUDING PART OF GL4; ALSO OUTLOT 15 OF THE ASSESSOR'S PLAT OF ONALASKA, IN GL4; ALL LOCATED IN SECTION 5, T16N, R7W, IN THE CITY OF ONALASKA, LA CROSSE COUNTY, WI.

RELOCATION ORDER STH 35, ONALASKA-USH 53, LA CROSSE COUNTY

TO PROPERLY ESTABLISH, LAY OUT, WIDEN, ENLARGE, EXTEND, CONSTRUCT, RECONSTRUCT, IMPROVE, OR MAINTAIN A PORTION OF THE HIGHWAY DESIGNATED ABOVE, THE STATE OF WISCONSIN DEPARTMENT OF TRANSPORTATION DEEMS IT NECESSARY TO RELOCATE OR CHANGE SAID HIGHWAY AND ACQUIRE CERTAIN LANDS AND INTERESTS OR RIGHTS IN LANDS FOR THE ABOVE PROJECT.

TO EFFECT THIS CHANGE, PURSUANT TO AUTHORITY GRANTED UNDER SECTION 84.02 (3), 84.30, AND 84.09, WISCONSIN STATUTES, THE DEPARTMENT OF TRANSPORTATION HEREBY ORDERS THAT:

- 1. THAT PORTION OF SAID HIGHWAY AS SHOWN ON THIS PLAT IS LAD OUT AND ESTABLISHED TO THE LINES AND WIDTHS AS SO SHOWN FOR THE ABOVE PROJECT.
2. THE LANDS OR INTERESTS OR RIGHTS IN LANDS AS SHOWN ON THIS PLAT ARE REQUIRED BY THE DEPARTMENT FOR THE ABOVE PROJECT AND SHALL BE ACQUIRED IN THE NAME OF THE STATE OF WISCONSIN, PURSUANT TO THE PROVISIONS OF SECTION 84.09 (1) OR (2), WISCONSIN STATUTES.

FOR ADDITIONAL INFORMATION REFER TO THE TITLE SHEET, SHEET 2 OF 2 OF TRANSPORTATION PROJECT PLAT 7190-06-21-4.01, RECORDED AS DOCUMENT #1647192 AND FILED IN THE OFFICE OF THE REGISTER OF DEEDS IN LA CROSSE COUNTY.

Document # 1650544
ACCEPTED FOR RECORDING IN THE OFFICE OF THE REGISTER OF DEEDS IN LA CROSSE COUNTY, WISCONSIN AT 10:25 A.M. ON January 13, 2015
FILED IN TPP CAB Page 50A
Signature of Cheryl A. McBride, REGISTER OF DEEDS

RESERVED FOR REGISTER OF DEEDS
PROJECT NUMBER 7190-06-21-4.03

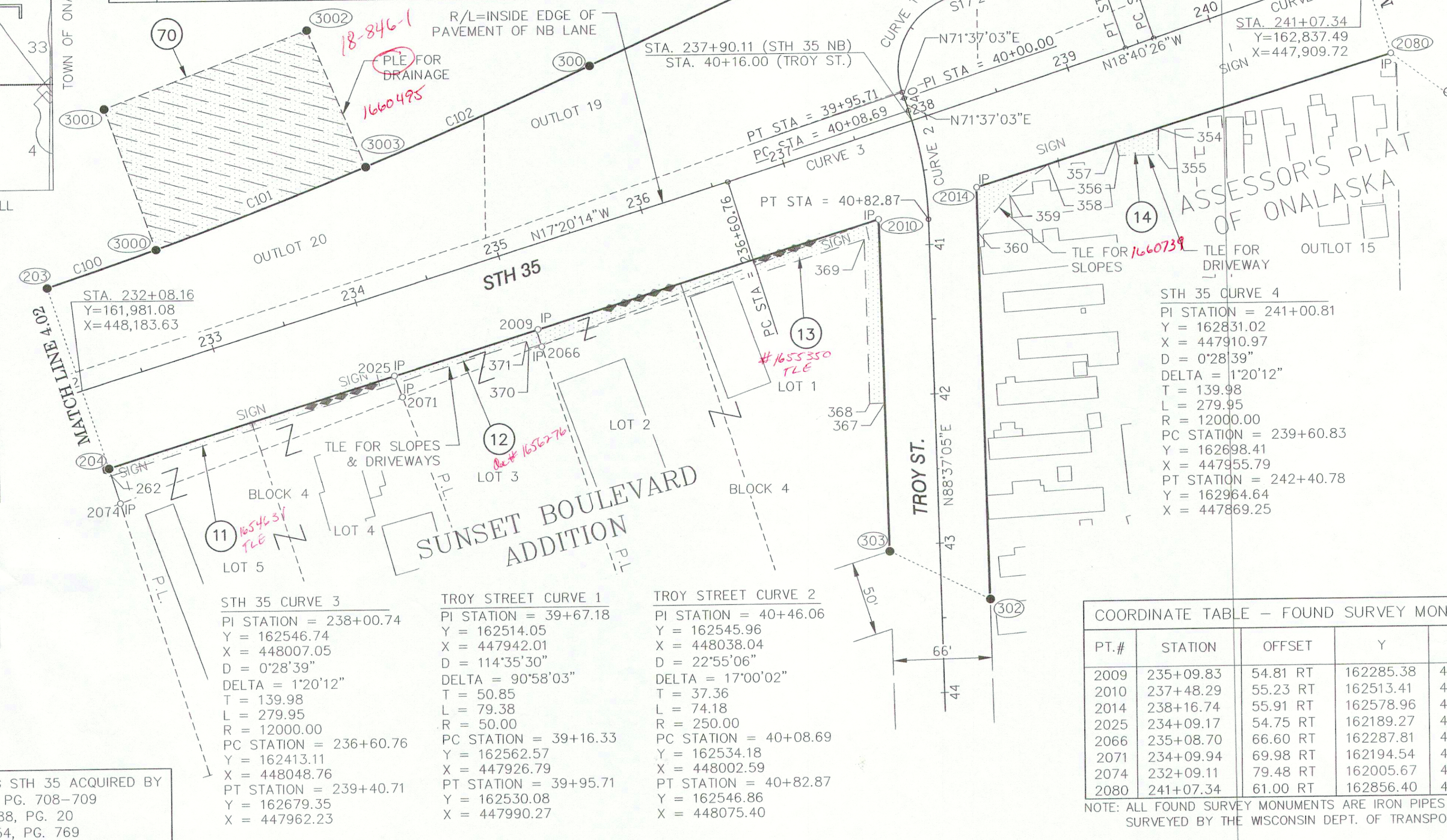
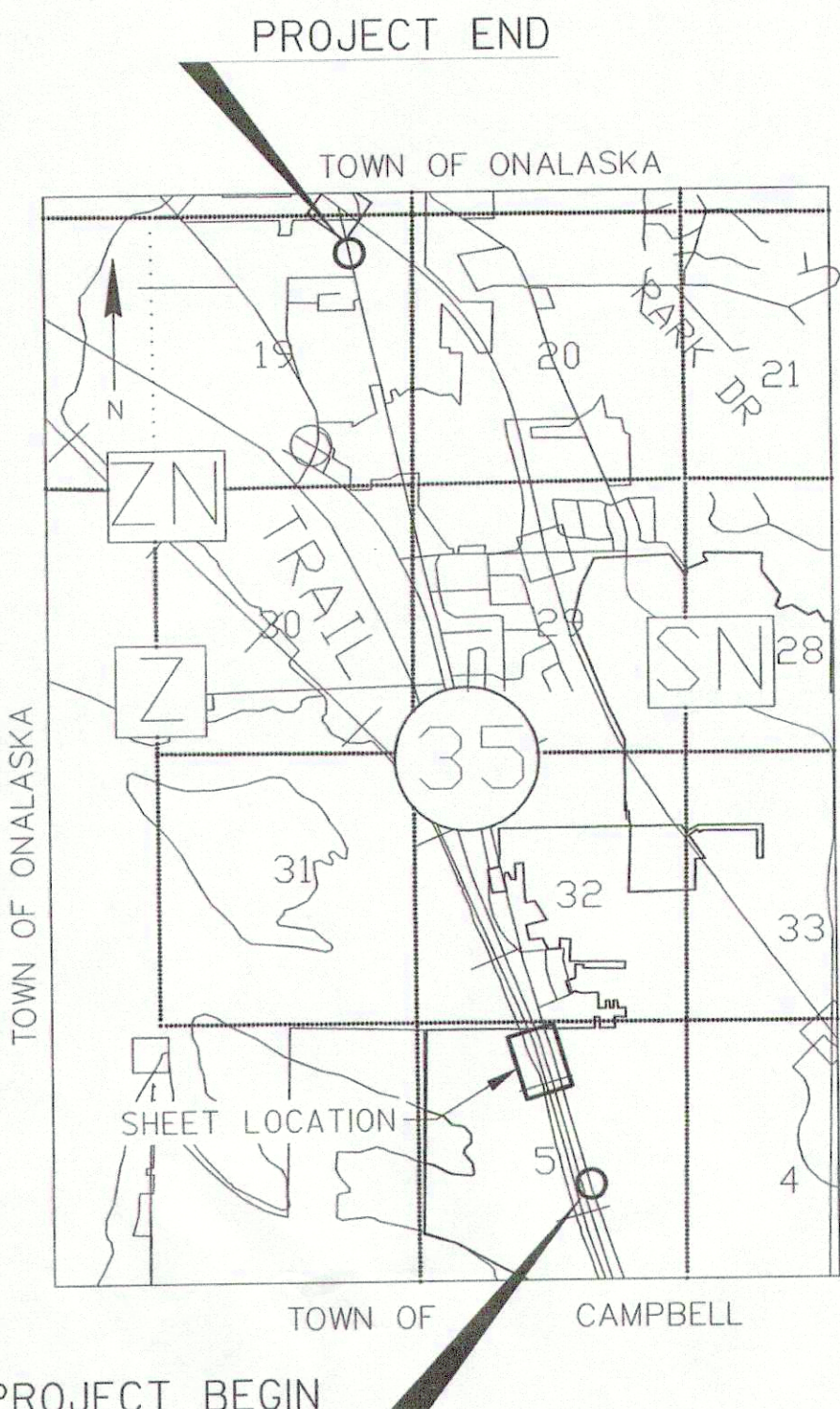
COORDINATE TABLE - R/W POINTS
Table with 5 columns: PT.#, STATION, OFFSET, Y, X. Rows include points 203 through 3003.

R/W CURVE TABLE
Table with 6 columns: CURVE #, DELTA ANGLE, TANGENT, RADIUS, ARC LENGTH, CHORD LENGTH, CHORD BEARING. Rows include curves C4, C100, C101, C102.

COORDINATE TABLE - TLE POINTS
Table with 5 columns: PT.#, STATION, OFFSET, Y, X. Rows include points 262 through 371.

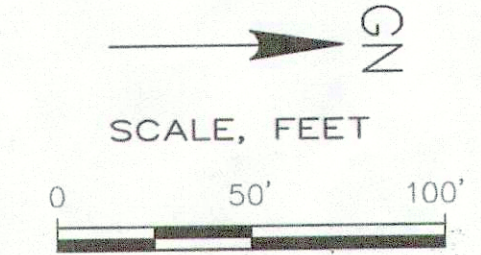
COORDINATE TABLE - PLE POINTS
Table with 5 columns: PT.#, STATION, OFFSET, Y, X. Rows include points 3001 and 3002.

COORDINATE TABLE - FOUND SURVEY MONUMENTS
Table with 5 columns: PT.#, STATION, OFFSET, Y, X. Rows include points 2009 through 2080.



R/W COURSE TABLE
Table with 3 columns: PT. TO PT., DIRECTION, DISTANCE. Rows include segments from 301 to 2080.

PLE COURSE TABLE
Table with 3 columns: PT. TO PT., DIRECTION, DISTANCE. Rows include segments from 3000 to 3001.



EXISTING ACCESS CONTROL ALONG STH 35 ACQUIRED BY
DOC. 975871, VOL. 758, PG. 708-709
DOC. 991681, VOL. 788, PG. 20
DOC. 973697, VOL. 754, PG. 769

JEWELL associates engineers, inc. logo and professional seal of Frederick G. Gruber, Land Surveyor, with signature and date.