

SCHEDULE OF LANDS & INTERESTS REQUIRED

Table with 8 columns: PARCEL NUMBER, OWNER (S), INTEREST REQUIRED, R/W ACRES REQUIRED (NEW, EXISTING, TOTAL), T.L.E. ACRES, P.L.E. ACRES. Rows include parcels 27, 61, 28, 29, 30, 31, 32, and 70.

NOTE: OWNER'S NAMES ARE SHOWN FOR REFERENCE PURPOSES ONLY AND ARE SUBJECT TO CHANGE PRIOR TO THE TRANSFER OF LAND INTERESTS TO THE DEPARTMENT.

TRANSPORTATION PROJECT PLAT NO: 7190-06-21 - 4.10

LOCATED IN THE NW-NW OF SECTION 32, T17N, R7W, IN BOTH THE TOWN OF ONALASKA AND THE CITY OF ONALASKA; ALSO LOCATED IN THE SW-SW OF SECTION 29, T17N, R7W IN THE TOWN OF ONALASKA, ALL IN LA CROSSE COUNTY, WISCONSIN.

RELOCATION ORDER STH 35, ONALASKA-USH 53, LA CROSSE COUNTY

TO PROPERLY ESTABLISH, LAY OUT, WIDEN, ENLARGE, EXTEND, CONSTRUCT, RECONSTRUCT, IMPROVE, OR MAINTAIN A PORTION OF THE HIGHWAY DESIGNATED ABOVE, THE STATE OF WISCONSIN DEPARTMENT OF TRANSPORTATION DEEMS IT NECESSARY TO RELOCATE OR CHANGE SAID HIGHWAY AND ACQUIRE CERTAIN LANDS AND INTERESTS OR RIGHTS IN LANDS FOR THE ABOVE PROJECT.

TO EFFECT THIS CHANGE, PURSUANT TO AUTHORITY GRANTED UNDER SECTION 84.02 (3), 84.30, AND 84.09, WISCONSIN STATUTES, THE DEPARTMENT OF TRANSPORTATION HEREBY ORDERS THAT:

- 1. THAT PORTION OF SAID HIGHWAY AS SHOWN ON THIS PLAT IS LAID OUT AND ESTABLISHED TO THE LINES AND WIDTHS AS SO SHOWN FOR THE ABOVE PROJECT.
2. THE LANDS OR INTERESTS OR RIGHTS IN LANDS AS SHOWN ON THIS PLAT ARE REQUIRED BY THE DEPARTMENT FOR THE ABOVE PROJECT AND SHALL BE ACQUIRED IN THE NAME OF THE STATE OF WISCONSIN, PURSUANT TO THE PROVISIONS OF SECTION 84.09 (1) OR (2), WISCONSIN STATUTES.

FOR ADDITIONAL INFORMATION REFER TO THE TITLE SHEET, SHEET 2 OF 2 OF TRANSPORTATION PROJECT PLAT 7190-06-21-4.01, RECORDED AS DOCUMENT #1647192 AND FILED IN THE OFFICE OF THE REGISTER OF DEEDS IN LA CROSSE COUNTY.

DOCUMENT # 1651488

ACCEPTED FOR RECORDING IN THE OFFICE OF THE REGISTER OF DEEDS IN LA CROSSE COUNTY, WISCONSIN AT 6:01 A.M. ON February 5, 2015

FILED IN TPP CAB Page 55B

Signature: Cheryl A. McBride, REGISTER OF DEEDS

RESERVED FOR REGISTER OF DEEDS PROJECT NUMBER 7190-06-21-4.10

COORDINATE TABLE - R/W POINTS

Table with 5 columns: PT.#, STATION, OFFSET, Y, X. Lists points from 902 to 3013 along the project alignment.

RELOCATED CTH "Z" CURVE 4: PI STATION = 109+49.12, Y = 168478.19, X = 446254.63, D = 67'24"24", DELTA = 93'31'46", T = 90.40, L = 138.75, R = 85.00, PC STATION = 108+58.72, Y = 168567.83, X = 446242.93, PT STATION = 109+97.47, Y = 168495.39, X = 446343.39

RELOCATED CTH "Z" CURVE 3: PI STATION = 107+00, Y = 168725.66, X = 446222.34, D = 5'43'46", DELTA = 10'00'29", T = 87.56, L = 174.67, R = 1000.00, PC STATION = 106+12.44, Y = 168809.19, X = 446196.09, PT STATION = 107+87.11, Y = 168638.84, X = 446233.67

UTILITY INTERESTS REQUIRED

Table with 3 columns: UTILITY NUMBER, OWNER, INTEREST REQUIRED. Lists CenturyLink and Charter Communications.

EASEMENT TABLE

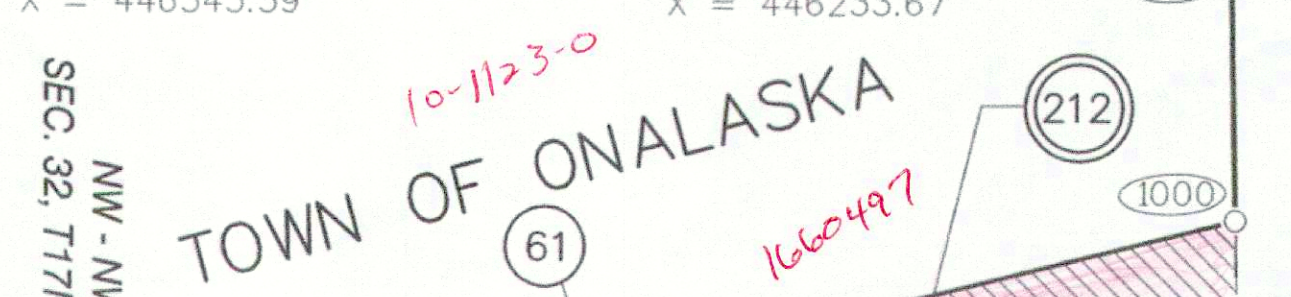
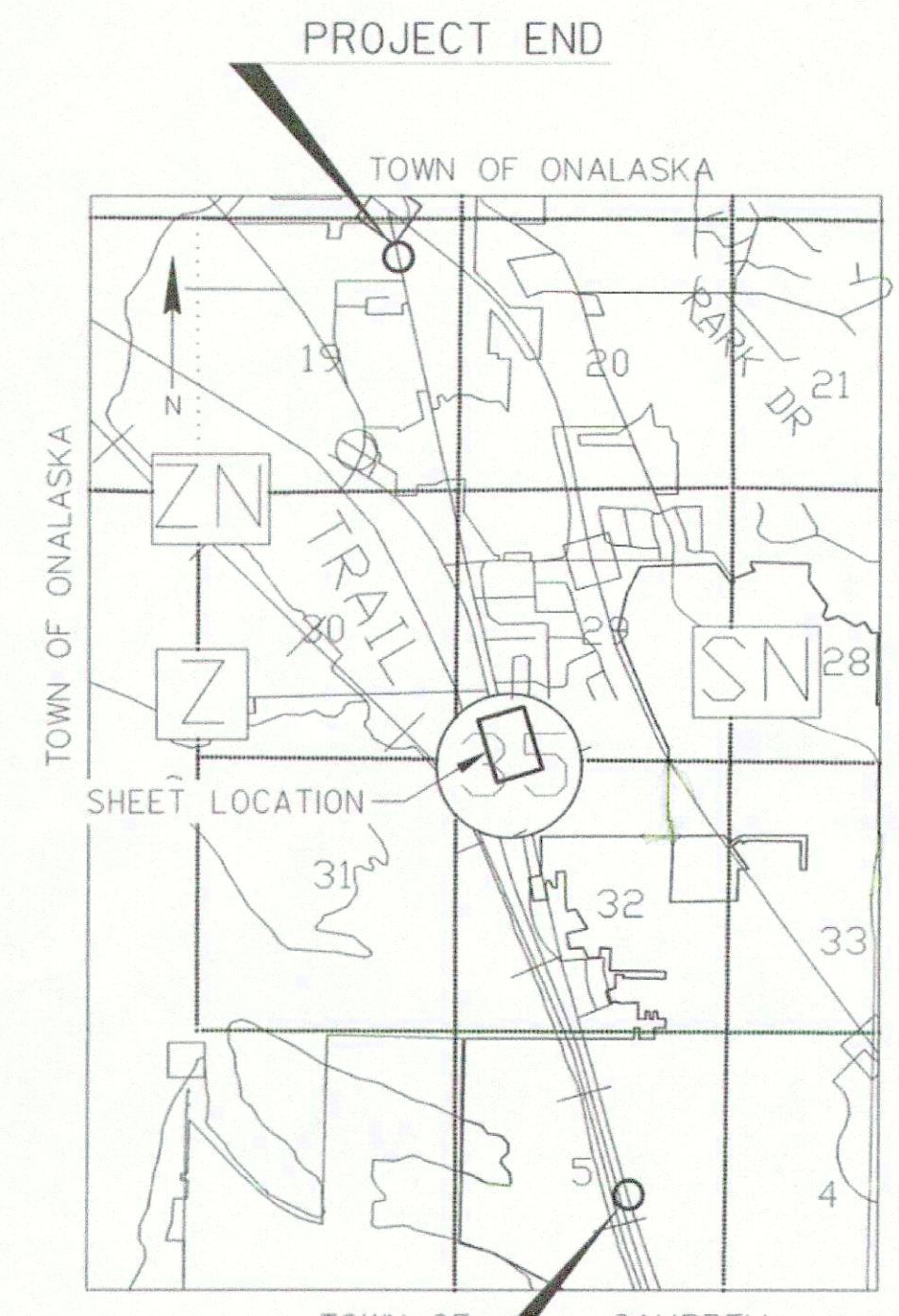
Table with 3 columns: OWNER, RECORDING INFORMATION, LOCATED IN R/W PARCEL #. Lists CenturyLink and Charter Communications.

COORDINATE TABLE - PLE POINTS

Table with 5 columns: PT.#, STATION, OFFSET, Y, X. Lists points 3011 and 3012.

PLE COURSE TABLE

Table with 3 columns: PT. TO PT., DIRECTION, DISTANCE. Lists courses between points 3010, 3011, 3012, and 3013.



R/W COURSE TABLE: Table with 3 columns: PT. TO PT., DIRECTION, DISTANCE. Lists courses from 902 to 903.

R/W CURVE TABLE: Table with 7 columns: CURVE #, DELTA ANGLE, TANGENT, RADIUS, ARC LENGTH, CHORD LENGTH, CHORD BEARING. Lists curves C200, C201, and C202.

S 1/4 CORNER SEC. 29 FOUND BERNTSEN MONUMENT: Y = 168,235.50, X = 448,153.21

N 1/4 CORNER SEC. 29 FOUND BRASS CAP MONUMENT: Y = 173,496.02, X = 448,088.65

COORDINATE TABLE - TLE POINTS: Table with 5 columns: PT.#, STATION, OFFSET, Y, X. Lists points 1054 to 1063.

JEWELL associates engineers, inc. Professional Land Surveyor seal for Frederick G. Gruber and Cory Schlager.

