

CONVENTIONAL SYMBOLS

SECTION LINE	---	SECTION CORNER SYMBOL		R/W MONUMENT (TO BE SET)	●
QUARTER LINE	---	SECTION CORNER MONUMENT		NON-MONUMENTED R/W POINT	○
SIXTEENTH LINE	---	GEODETIC SURVEY MONUMENT		FOUND IRON PIN (1-INCH UNLESS NOTED)	IP
NEW REFERENCE LINE	---	SIXTEENTH CORNER MONUMENT		OFF-PREMISE SIGN	
NEW R/W LINE	---	SIGN		COMPENSABLE	
EXISTING R/W OR HE LINE	---	ELECTRIC POLE		NON-COMPENSABLE	
PROPERTY LINE	---	TELEPHONE POLE		PEDESTAL (LABEL TYPE) (TV, TEL, ELEC, ETC.)	
LOT, TIE & OTHER MINOR LINES	---	ACCESS RESTRICTED BY ACQUISITION		NO ACCESS (BY STATUTORY AUTHORITY)	
SLOPE INTERCEPT	---	NO ACCESS (BY PREVIOUS PROJECT OR CONTROL)		NO ACCESS (NEW HIGHWAY)	
CORPORATE LIMITS	---	PARCEL NUMBER		UTILITY NUMBER	
UNDERGROUND FACILITY (COMMUNICATIONS, ELECTRIC, ETC)	---	PARALLEL OFFSETS			
NEW R/W (FEE OR HE) (HATCHING VARIES BY OWNER)	---				
TEMPORARY LIMITED EASEMENT AREA	---				
EASEMENT AREA (PERMANENT LIMITED OR RESTRICTED DEVELOPMENT)	---				
TRANSMISSION STRUCTURES	---				
BUILDING TO BE REMOVED					
BRIDGE					

CONVENTIONAL ABBREVIATIONS

ACCESS RIGHTS	AR	POINT OF INTERSECTION	PI
ACRES	AC	PROPERTY LINE	PL
AHEAD	AH	RECORDED AS (100')	(100')
ALUMINUM	ALUM	REEL / IMAGE	R/I
AND OTHERS	ET AL	REFERENCE LINE	R/L
BACK	BK	REMAINING	REM
BLOCK	BLK	RESTRICTIVE DEVELOPMENT	RDE
CENTERLINE	C/L	EASEMENT	
CERTIFIED SURVEY MAP	CSM	RIGHT	RT
CONCRETE	CONC	RIGHT OF WAY	R/W
COUNTY	CO	SECTION	SEC
COUNTY TRUNK HIGHWAY	CTH	SEPTIC VENT	SEPV
DISTANCE	DIST	SQUARE FEET	SF
CORNER	COR	STATE TRUNK HIGHWAY	STH
DOCUMENT NUMBER	DOC	STATION	STA
EASEMENT	EASE	TELEPHONE PEDESTAL	TP
EXISTING	EX	TEMPORARY LIMITED EASEMENT	TLE
GAS VALVE	GV	EASEMENT	
GRID NORTH	GN	TRANSPORTATION PROJECT	TPP
HIGHWAY EASEMENT	HE	PLAT	
IDENTIFICATION	ID	UNITED STATES HIGHWAY	USH
LAND CONTRACT	LC	VOLUME	V
LEFT	LT		
MONUMENT	MON		
NATIONAL GEODETIC SURVEY	NGS		
NUMBER	NO		
OUTLOT	OL		
PAGE	P		
POINT OF TANGENCY	PT		
PERMANENT LIMITED EASEMENT	PLE		
POINT OF BEGINNING	POB		
POINT OF CURVATURE	PC		
POINT OF COMPOUND CURVE	PCC		

CURVE DATA

LONG CHORD	LCH
LONG CHORD BEARING	LCB
RADIUS	R
DEGREE OF CURVE	D
CENTRAL ANGLE	Δ/DELTA
LENGTH OF CURVE	L
TANGENT	T
DIRECTION AHEAD	DA
DIRECTION BACK	DB

NOTES:

POSITIONS SHOWN ON THIS PLAT ARE WISCONSIN COORDINATE REFERENCE SYSTEM COORDINATES (WISCRS), LACROSSE COUNTY, NAD 83 (2011) IN US SURVEY FEET. VALUES SHOWN ARE GRID COORDINATES, GRID BEARINGS, AND GRID DISTANCES. GRID DISTANCES MAY BE USED AS GROUND DISTANCES.

RIGHT OF WAY MONUMENTS ARE 3/4" X 24" AND ARE PLACED PRIOR TO OR AT THE TIME OF LAND TITLE TRANSFER.

RIGHT OF WAY BOUNDARIES ARE DEFINED WITH COURSES OF THE PERIMETER OF THE HIGHWAY LANDS REFERENCED TO THE U.S. PUBLIC LAND SURVEY OR OTHER SURVEYS OF PUBLIC RECORD.

CONVENTIONAL UTILITY SYMBOLS

WATER	---
GAS	---
TELEPHONE OVERHEAD	---
TRANSMISSION LINES	---
ELECTRIC	---
CABLE TELEVISION	---
FIBER OPTIC	---
SANITARY SEWER	---
STORM SEWER	---

CAUTION  
THIS PLAT IS FOR ILLUSTRATIVE PURPOSES ONLY. DEEDS MUST BE CHECKED TO DETERMINE PROPERTY BOUNDARIES.

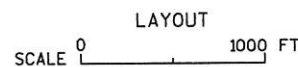
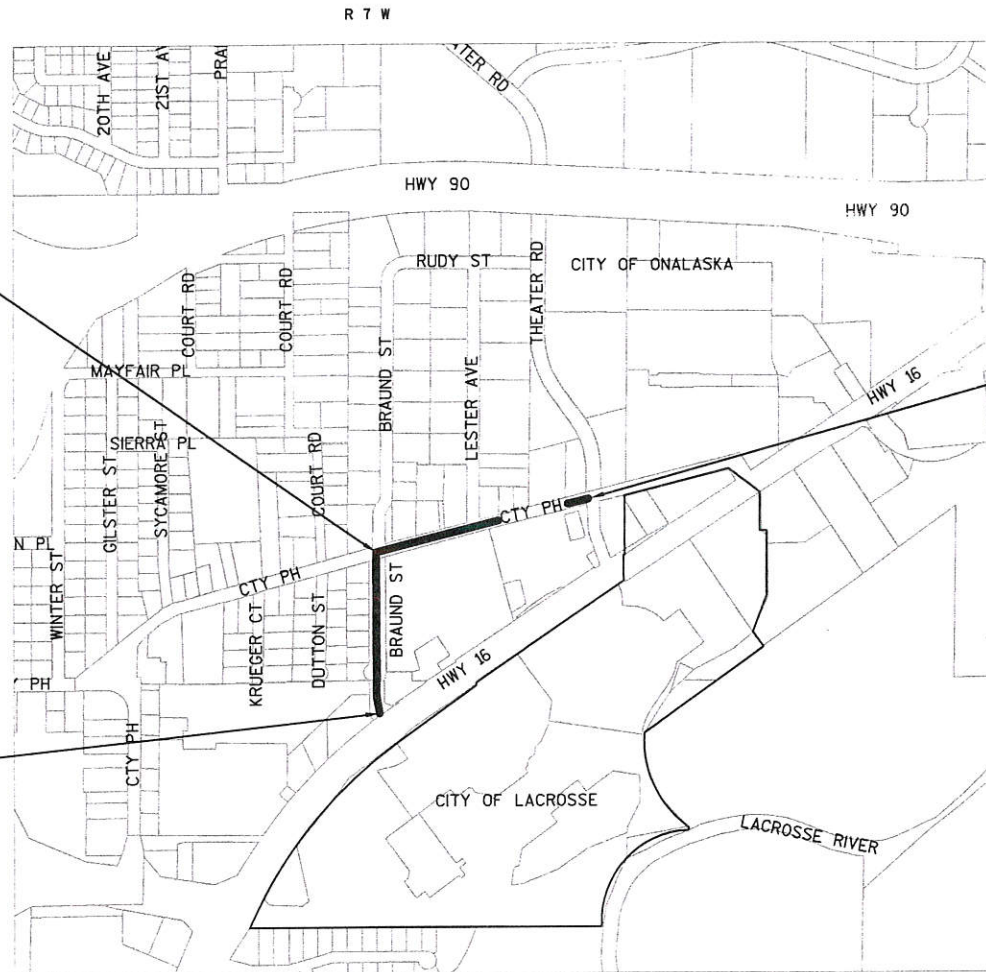
R/W PROJECT NUMBER 5991-02-53	SHEET NUMBER 4.01	TOTAL SHEETS 5
PLAT OF RIGHT OF WAY REQUIRED FOR CITY OF ONALASKA, BRAUND STREET & PH (STH 16 TO THEATER ROAD) LOCAL STREET LA CROSSE COUNTY		

STA 20+43.37 BRAUND STREET =  
STA 101+31.85 CTH PH  
Y= 153313.935  
X= 458826.835

BEGIN RELOCATION ORDER  
5991-02-53  
STA 11+32.77  
Y= 152409.787  
X= 458854.382

198.284 FEET SOUTH  
AND 0.582 FEET WEST  
OF SOUTH 1/4 SECTION  
10, T16N, R7W

END RELOCATION ORDER  
5991-02-53  
STA 112+00.00  
Y=153592.841  
X=459857.926  
972.963 FEET NORTH AND 1009.404  
FEET EAST OF THE SOUTH 1/4  
SECTION 10, T16N, R7W



TOTAL NET LENGTH OF CENTERLINE = 0.375 MI

ORIGINAL PLANS PREPARED BY



2-7-2017 (Date) *Jason L. Cance* (Signature)

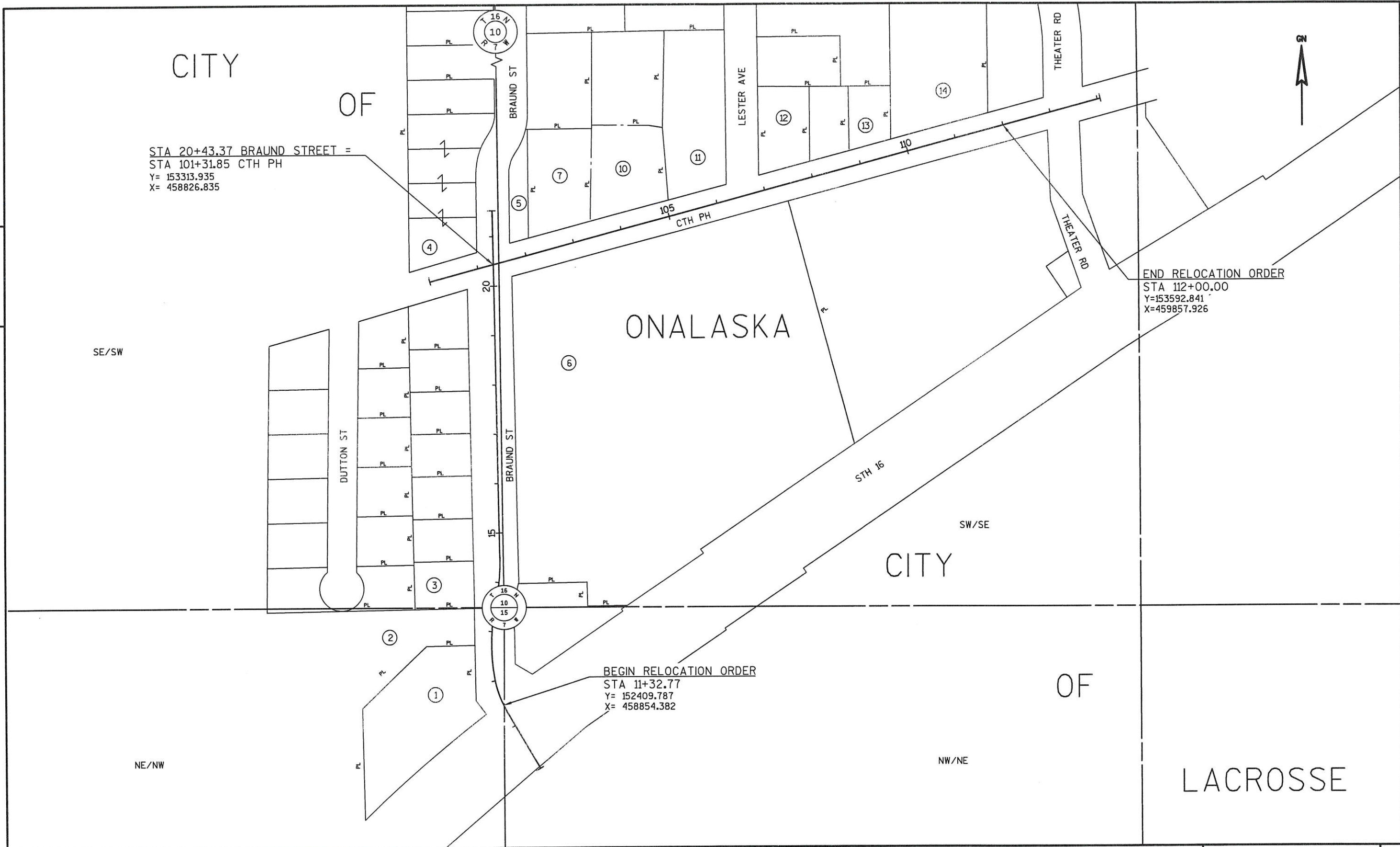
REVISION DATE	CITY OF ONALASKA
APPROVED FOR THE CITY	DATE: 2-7-17 <i>C. J. Lot</i> (Signature)



SCHEDULE OF LANDS & INTERESTS REQUIRED				OWNERS NAMES ARE SHOWN FOR REFERENCE PURPOSES ONLY AND ARE SUBJECT TO CHANGE PRIOR TO THE TRANSFER OF LAND INTERESTS TO THE CITY OF ONALASKA.			
PARCEL NUMBER	SHEET NUMBER	OWNER (S)	INTEREST REQUIRED	R/W SF REQUIRED			TLE SF
				NEW	EXISTING	TOTAL	
1	4.04	VALLEY PLAZA LLC	FEE/TLE	792	-	792	552
2	4.04	JLP ASSOCIATES II OF EDEN PRAIRIE	FEE/TLE	1417	-	1417	271
3	4.04	DEAN A BLUSKE, DIANE E. OLSON, AUDREY L. FREDERICK, AND JANELLE A KOWALSKI	FEE	75	-	75	-
4	4.04	THE LKE LIMITED PARTNERSHIP	TLE	-	-	-	105
5	4.04	BENJAMIN R. MILLER & CRYSTAL D. MILLER	FEE/TLE	223	-	223	206
6	4.04/4.05	SPIRIT SPE PORTFOLIO 2006-1 LLC	FEE/TLE	181	-	181	1573
7	4.04	DENNIS T TRUE & VICKI R TRUE	FEE/TLE	688	-	688	783
10	4.04/4.05	JAE ENTERPRISES	TLE	-	-	-	934
11	4.05	CENTURYTEL OF WISCONSIN	TLE	-	-	-	711
12	4.05	VALLEY VIEW BUSINESS PARK	TLE	-	-	-	50
13	4.05	THE AUDIO VIDEO PROS INC	TLE	-	-	-	359
14	4.05	CMJ INVESTMENTS LLC	TLE	-	-	-	211
100	4.04	WISCONSIN-MINNESOTA LIGHT AND POWER COMPANY	RELEASE OF RIGHTS				
101	4.05	NORTHERN STATES POWER COMPANY	RELEASE OF RIGHTS				

R/W COORDINATES		
Point	North	East
550	152607.415	458788.514
551	152607.627	458778.594
556	152398.608	458804.606
557	152433.407	458799.079
558	152433.155	458791.015
559	152437.105	458784.245
560	152530.773	458781.554
561	152535.485	458769.557
562	152128.230	458777.699
563	152069.323	458864.891
564	152184.751	458873.171
565	152287.501	458891.566
566	152360.857	458859.475
569	152400.015	458803.098
570	152395.914	458804.748
578	152430.199	458791.738
541	152625.116	458788.050

REVISION DATE	DATE 2-7-2017	NOT TO SCALE	HWY: BRAUND RD-CTH PH	STATE R/W PROJECT NUMBER 5991-02-53	PLAT SHEET 4.02
			COUNTY: LACROSSE	CONSTRUCTION PROJECT NUMBER 5991-02-54/55	PS&E SHEET ----- <b>E</b>



STA 20+43.37 BRAUND STREET =  
 STA 101+31.85 CTH PH  
 Y= 153313.935  
 X= 458826.835

END RELOCATION ORDER  
 STA 112+00.00  
 Y=153592.841  
 X=459857.926

BEGIN RELOCATION ORDER  
 STA 11+32.77  
 Y= 152409.787  
 X= 458854.382

4

4

REVISION DATE	DATE 2-7-2017	NOT TO SCALE	HWY: BRAUND ST/CTH PH	STATE R/W PROJECT NUMBER 5991-02-53	PLAT SHEET 4.03
	GRID FACTOR N/A		COUNTY: LACROSSE	CONSTRUCTION PROJECT NUMBER 5991-02-54/55	PS&E SHEET E



Point	Station	Offset
550	13+28.00	59.00' LT
551	13+29.00	51.00' LT
552	12+75.00	54.03' LT
553	12+75.00	59.00' LT
554	13+25.00	63.00' LT
555	13+25.00	58.50' LT
556	11+45.44	49.00' LT
557	11+65.00	44.28' LT
558	11+80.00	45.73' LT
559	12+20.00	43.00' LT
560	12+65.00	42.00' LT
561	12+65.00	54.00' LT
562	13+47.03	53.00' LT
563	20+64.74	47.36' LT
564	20+83.00	32.38' LT
571	12+55.00	40.00' LT
572	17+13.00	36.92' RT
573	17+13.00	40.00' RT
574	16+16.00	40.00' RT
575	16+16.00	36.94' RT
576	18+97.00	36.88' RT
577	18+97.00	40.00' RT
578	19+18.00	40.00' RT
579	19+18.00	36.88' RT
580	19+39.00	36.87' RT
581	19+39.00	40.00' RT
582	19+94.00	40.00' RT
583	20+27.70	74.06' RT
584	19+98.00	36.86' RT
585	20+13.20	44.68' RT
586	20+25.33	64.35' RT
587	102+60.00	33.14' RT
588	102+60.00	38.00' RT
589	102+75.00	38.00' RT
590	102+75.15	33.18' RT
591	103+10.00	33.28' RT
592	103+10.00	38.00' RT
593	103+25.00	38.00' RT
594	103+25.00	33.32' RT
595	101+77.50	44.00' LT
596	103+50.00	44.00' LT
597	103+50.00	38.00' LT
598	101+76.21	39.00' LT
599	103+25.00	39.00' LT
600	103+25.00	32.68' LT
628	11+32.77	0.00' LT
629	13+47.03	0.00' LT
641	13+47.03	41.39' LT
638	11+74.58	47.79' LT
642	11+75.00	53.00' LT
643	12+20.00	48.00' LT
644	12+65.00	47.00' LT

RECIPROCAL EASEMENT  
DOC # 943476  
DOC # 948182  
DOC # 971028  
DOC # 1035421

RESTRICTED ACCESS  
DOC # 997082

RECIPROCAL EASEMENT  
DOC # 943476  
DOC # 948182  
DOC # 971028  
DOC # 1022733  
DOC # 1035421

JLP ASSOCIATES II OF EDEN PRAIRIE  
INGRESS/EGRESS EASEMENT  
DOC # 1022736

BLANKET EASEMENT  
WISCONSIN-MINNESOTA LIGHT AND POWER COMPANY  
DOC # 246813

DEAN A. BLUSKE, DIANE E. OLSON, AUDREY L. FREDERICK, AND JANELLE A. KOWALSKI

CROSS EASEMENT AGREEMENT  
BLANKET DESCRIPTION  
DOC # 955171  
DOC # 990021  
DOC # 1035928

HISTORICAL BASIS OF R/W	
CSM VOL 2, PG 211 DOC# 955842	8/24/1984
CSM VOL 7, PG 115 DOC# 752031	1/2/1997
OAKLAND ADDITION DOC# 698251	4/27/1959
VALLEY VIEW BUSINESS PARK ADDITION DOC# 968077	4/30/1985
RELOCATION ORDER CO-181	6/11/1985

STA 20+43.37 BRAUND STREET =  
STA 101+31.85 CTH PH  
Y = 153313.935  
X = 458826.835

TILE SLOPE  
105 S.F.  
Y = 153308.662  
X = 458807.340  
PI: 101+11.66

TILE SLOPE  
206 S.F.  
Y = 153319.5032  
X = 458847.420  
PI: 101+53.18

3/4" REBAR  
Y = 155257.980  
X = 458809.130

TILE SLOPE  
783 S.F.

TILE SLOPE  
188 S.F.

BEGIN RELOCATION ORDER  
STA 11+32.77  
Y = 152409.787  
X = 458854.382

PI STA = 11+77.65  
PIY = 152448.467  
PIX = 458831.628  
DELTA = 24°20'57"  
D = 27°32'46"  
T = 44.87'  
L = 88.39'

PI STA = 12+86.03  
PIY = 152557.580  
PIX = 458819.934  
DELTA = 15°25'12"  
D = 14°19'26"  
T = 54.15'  
L = 107.65'

PI STA = 14+14.16  
PIY = 152684.672  
PIX = 458840.753  
DELTA = 10°34'12"  
D = 14°19'26"  
T = 37.00'  
L = 73.79'

From	To	Direction	Distance
11+77.65	11+77.65	S00°51'00"E	638.59
11+77.65	11+77.65	S27°32'46"W	18.69
11+77.65	11+77.65	S27°32'46"W	18.69
11+77.65	11+77.65	S27°32'46"W	18.69
11+77.65	11+77.65	S27°32'46"W	18.69
11+77.65	11+77.65	S27°32'46"W	18.69
11+77.65	11+77.65	S27°32'46"W	18.69
11+77.65	11+77.65	S27°32'46"W	18.69
11+77.65	11+77.65	S27°32'46"W	18.69
11+77.65	11+77.65	S27°32'46"W	18.69
11+77.65	11+77.65	S27°32'46"W	18.69
11+77.65	11+77.65	S27°32'46"W	18.69
11+77.65	11+77.65	S27°32'46"W	18.69
11+77.65	11+77.65	S27°32'46"W	18.69
11+77.65	11+77.65	S27°32'46"W	18.69
11+77.65	11+77.65	S27°32'46"W	18.69
11+77.65	11+77.65	S27°32'46"W	18.69
11+77.65	11+77.65	S27°32'46"W	18.69
11+77.65	11+77.65	S27°32'46"W	18.69
11+77.65	11+77.65	S27°32'46"W	18.69
11+77.65	11+77.65	S27°32'46"W	18.69
11+77.65	11+77.65	S27°32'46"W	18.69
11+77.65	11+77.65	S27°32'46"W	18.69

From	To	Direction	Distance
11+77.65	11+77.65	N30°27'59"W	11.00
11+77.65	11+77.65	S11°32'17"E	11.00
11+77.65	11+77.65	P1: 12+21.17	11.00
11+77.65	11+77.65	P1: 12+31.88	11.00
11+77.65	11+77.65	P1: 13+39.53	11.00
11+77.65	11+77.65	P1: 13+77.16	11.00
11+77.65	11+77.65	P1: 14+14.16	11.00
11+77.65	11+77.65	P1: 14+50.95	11.00
11+77.65	11+77.65	1" IP	11.00
11+77.65	11+77.65	Y = 152619.878	11.00
11+77.65	11+77.65	X = 458848.522	11.00

From	To	Direction	Distance
11+77.65	11+77.65	N30°27'59"W	11.00
11+77.65	11+77.65	S11°32'17"E	11.00
11+77.65	11+77.65	P1: 12+21.17	11.00
11+77.65	11+77.65	P1: 12+31.88	11.00
11+77.65	11+77.65	P1: 13+39.53	11.00
11+77.65	11+77.65	P1: 13+77.16	11.00
11+77.65	11+77.65	P1: 14+14.16	11.00
11+77.65	11+77.65	P1: 14+50.95	11.00
11+77.65	11+77.65	1" IP	11.00
11+77.65	11+77.65	Y = 152619.878	11.00
11+77.65	11+77.65	X = 458848.522	11.00

REVISION DATE	DATE 2-7-2017	SCALE, FEET	HWY: BRAUND ST / CTH PH	STATE R/W PROJECT NUMBER 5991-02-53	PLAT SHEET 4.04
	GRID FACTOR N/A		COUNTY: LACROSSE	CONSTRUCTION PROJECT NUMBER 5991-02-54/55	PS&E SHEET E



CITY

ONALASKA

4

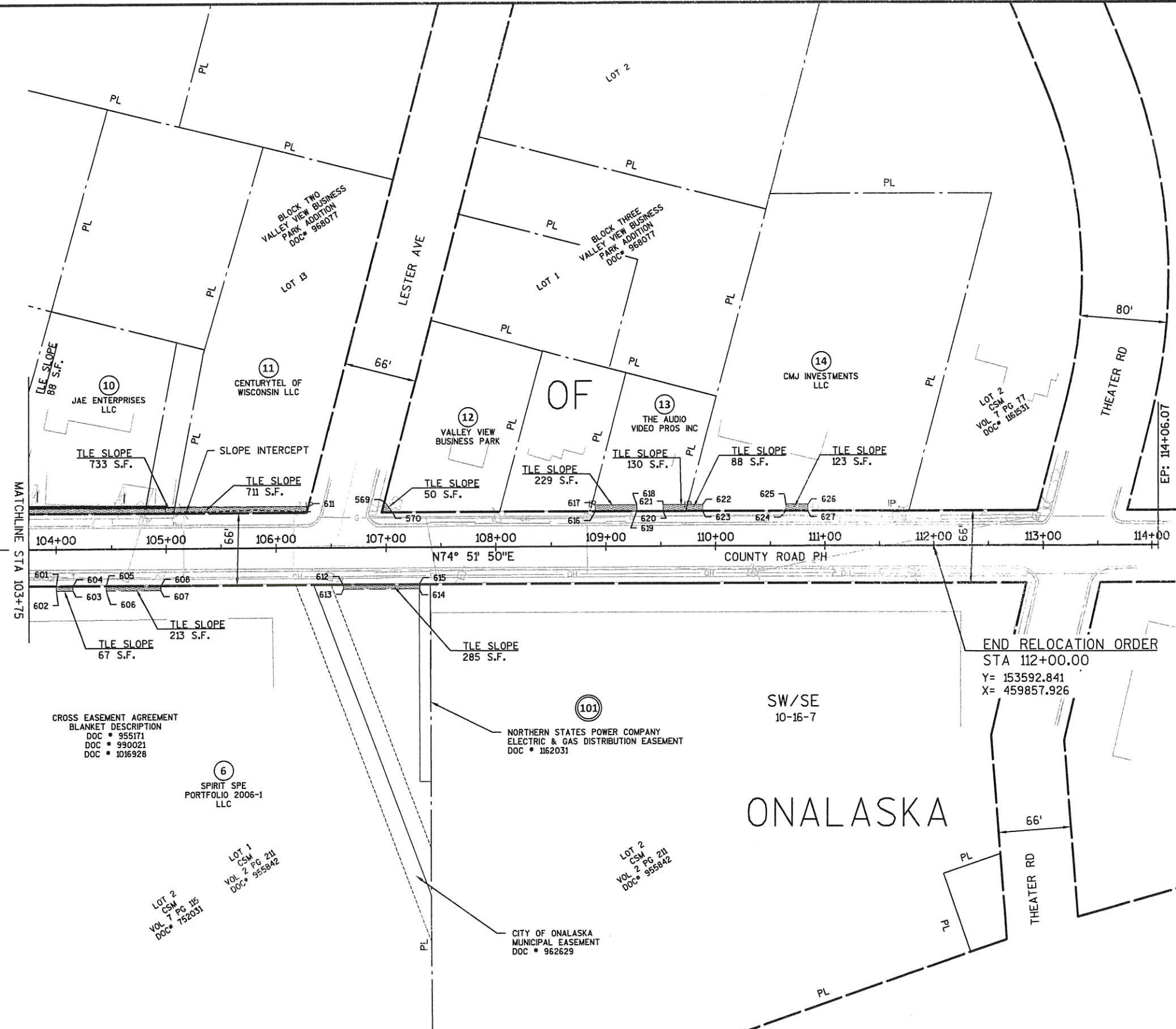
4

3/4" REBAR  
Y= 155257.980  
X= 458809.130

231.46'  
N74° 51' 50"E  
TO STATION  
103+75

1" IP  
Y= 152619.878  
X= 458848.522

HISTORICAL BASIS OF R/W	
CSM VOL 2, PG 211 DOC# 955842	8/24/1984
CSM VOL 7, PG 115 DOC# 752031	1/2/1997
OAKLAND ADDITION DOC# 698251	4/27/1959
VALLEY VIEW BUSINESS PARK ADDITION DOC# 968077	4/30/1985
RELOCATION ORDER CO-181	6/11/1985



CROSS EASEMENT AGREEMENT  
BLANKET DESCRIPTION  
DOC # 955171  
DOC # 990021  
DOC # 1016928

NORTHERN STATES POWER COMPANY  
ELECTRIC & GAS DISTRIBUTION EASEMENT  
DOC # 1162031

END RELOCATION ORDER  
STA 112+00.00  
Y= 153592.841  
X= 459857.926

Point	Station	Offset
569	106+98.50	42.00' LT
570	107+06.00	32.07' LT
601	104+00.00	33.53' RT
602	104+00.00	38.00' RT
603	104+15.00	38.00' RT
604	104+15.00	33.57' RT
605	104+45.00	33.66' RT
606	104+45.00	38.00' RT
607	104+95.00	38.00' RT
608	104+95.00	33.80' RT
609	104+99.00	32.19' LT
610	104+99.00	38.00' LT
611	106+29.29	38.00' LT
612	106+61.00	33.90' RT
613	106+61.00	38.00' RT
614	107+31.00	38.00' RT
615	107+31.00	33.94' RT
616	108+90.00	31.98' LT
617	108+90.00	38.00' LT
618	109+28.00	38.00' LT
619	109+28.00	31.97' LT
620	109+52.00	31.95' LT
621	109+52.00	38.00' LT
622	109+88.00	38.00' LT
623	109+88.00	31.93' LT
624	110+64.00	31.85' LT
625	110+64.00	38.00' LT
626	110+84.00	38.00' LT
627	110+84.00	31.83' LT

REVISION DATE	DATE 2-7-2017	SCALE, FEET 0 50 100	HWY: BRAUND ST / CTH PH	STATE R/W PROJECT NUMBER 5991-02-53	PLAT SHEET 4.05
	GRID FACTOR N/A		COUNTY: LACROSSE	CONSTRUCTION PROJECT NUMBER 5991-02-54/55	PS&E SHEET E