

STATE OF WISCONSIN DEPARTMENT OF TRANSPORTATION TRANSPORTATION PROJECT PLAT TITLE SHEET

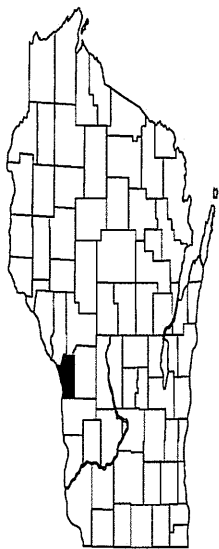
7930-08-20

WEST SALEM - MELROSE

STAN OLSON ROAD TO L PFAFF ROAD

STH 108

LA CROSSE COUNTY



CONVENTIONAL SYMBOLS

SECTION LINE	--- SECTION CORNER SYMBOL	● R/W MONUMENT (TO BE SET)
QUARTER LINE	--- SECTION CORNER MONUMENT	○ NON-MONUMENTED R/W POINT
SIXTEENTH LINE	--- SECTION CORNER MONUMENT	IP FOUND IRON PIN (3/4-INCH UNLESS NOTED)
NEW REFERENCE LINE	--- GEODETIC SURVEY MONUMENT	○ SKATEWHEEL CORNER MONUMENT
NEW R/W LINE	---	--- SIGN
EXISTING R/W OR HE LINE	---	--- OFF-PREMISE SIGN
PROPERTY LINE	---	---
LOT, TIE & OTHER MINOR LINES	---	---
SLOPE INTERCEPT	--- COMPENSABLE	--- NON-COMPENSABLE
CORPORATE LIMITS	////// ELECTRIC POLE	--- TELEPHONE POLE
UNDERGROUND FACILITY (COMMUNICATIONS, ELECTRIC, ETC.)	--- PEDESTAL (LABEL TYPE) (TV, TEL, ELEC, ETC.)	---
NEW R/W (FEE OR HE) (HATCHING VARIES BY OWNER)	---	---
TEMPORARY LIMITED EASEMENT AREA (PERMANENT LIMITED OR RESTRICTED DEVELOPMENT)	---	---
TRANSMISSION STRUCTURES	---	---
BUILDING TO BE REMOVED	---	---
BRIDGE	---	---

CONVENTIONAL ABBREVIATIONS

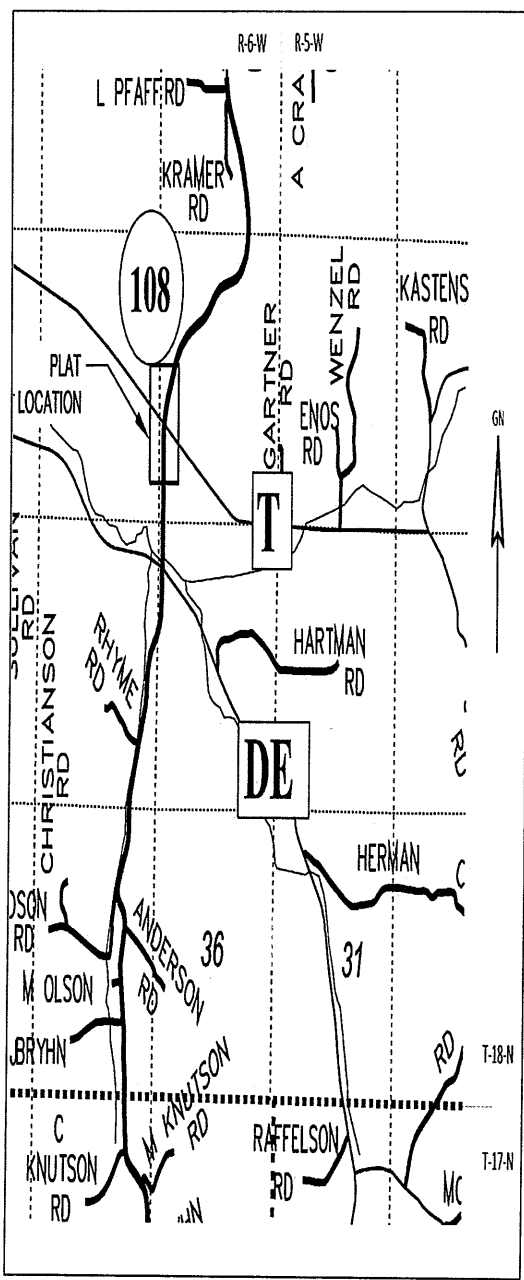
ACCESS RIGHTS	AR	POINT OF INTERSECTION	PI
ACRES	AC	PROPERTY LINE	PL
AHEAD	AH	RECORDED AS	(1100')
ALUMINUM AND OTHERS	ALUM	REEL / IMAGE	R/I
BACK	BK	REFERENCE LINE	R/L
BLOCK	BLK	REMAINING	REM
CENTERLINE	C/L	RESTRICTIVE DEVELOPMENT EASEMENT	ROE
CERTIFIED SURVEY MAP	CSM	RIGHT	RT
CONCRETE	CONC	RIGHT OF WAY	R/W
COUNTY	CO	SECTION	SEC
COUNTY TRUNK HIGHWAY	CTH	SEPTIC VENT	SEPV
DISTANCE	DIST	SQUARE FEET	SF
CORNER	COR	STATE TRUNK HIGHWAY	STH
DOCUMENT NUMBER	DOC	STATION	STA
EASEMENT	EASE	TELEPHONE PEDESTAL	TP
EXISTING	EX	TEMPORARY LIMITED EASEMENT	TLE
GAS VALVE	GV		
GRID NORTH	GN	TRANSPORTATION PROJECT PLAT	TPP
HIGHWAY EASEMENT	HE		
IDENTIFICATION	ID	UNITED STATES HIGHWAY	USH
LAND CONTRACT	LC	VOLUME	V
LEFT MONUMENT	LT		
NATIONAL GEODETIC SURVEY NUMBER	NOS		
OUTLOT	OL		
PAGE	P		
POINT OF TANGENCY	PT		
PERMANENT LIMITED EASEMENT	PLE		
POINT OF BEGINNING	PGB		
POINT OF CURVATURE	PC		
POINT OF COMPOUND CURVE	PCC		

CURVE DATA

LONG CHORD	LCH
LONG CHORD BEARING	LCB
RADIUS	R
DEGREE OF CURVE	D
CENTRAL ANGLE	Δ/Delta
LENGTH OF CURVE	L
TANGENT	T
DIRECTION AHEAD	DA
DIRECTION BACK	DB

CONVENTIONAL UTILITY SYMBOLS

---	WATER
---	GAS
---	TELEPHONE OVERHEAD
---	TRANSMISSION LINES
---	ELECTRIC
---	CABLE TELEVISION
---	FIBER OPTIC
---	SEWAGE
---	STORM SEWER



THE NOTES, CONVENTIONAL SIGNS, AND ABBREVIATIONS ARE ASSOCIATED WITH EACH TRANSPORTATION PROJECT PLAT FOR PROJECT 7930-08-20

POSITIONS SHOWN ON THIS PLAT ARE WISCONSIN COORDINATE REFERENCE SYSTEM COORDINATES (MCSRS), LA CROSSE COUNTY, NAD83 (2011) IN US SURVEY FEET. VALUES SHOWN ARE GRID COORDINATES, GRID BEARINGS, AND GRID DISTANCES. GRID DISTANCES MAY BE USED AS GROUND DISTANCES.

NGS CONTROL POINT UTILIZED: PD: DK5168, DESIGNATION: HERMAN COULEE GPS, LA CROSSE COUNTY, WI.

ALL NEW RIGHT-OF-WAY MONUMENTS WILL BE TYPE 2 (TYPICALLY 3/4" X 24" IRON REBARS), UNLESS OTHERWISE NOTED, AND WILL BE PLACED PRIOR TO THE COMPLETION OF THE PROJECT.

ALL RIGHT-OF-WAY LINES DEPICTED IN THE NON-ACQUISITION AREAS ARE INTENDED TO RE-ESTABLISH EXISTING RIGHT-OF-WAY LINES AS DETERMINED FROM PREVIOUS PROJECTS, OTHER RECORDED DOCUMENTS, OR FROM CENTERLINE OF EXISTING PAVEMENTS.

RIGHT-OF-WAY BOUNDARIES ARE DEFINED WITH COURSES OF THE PERIMETER OF THE HIGHWAY LANDS REFERENCED TO THE U.S. PUBLIC LAND SURVEY SYSTEM OR OTHER "SURVEYS" OF PUBLIC RECORD.

DIMENSIONING FOR THE NEW RIGHT-OF-WAY IS MEASURED ALONG AND PERPENDICULAR TO THE NEW REFERENCE LINES.

A TEMPORARY LIMITED EASEMENT (TLE) IS A RIGHT FOR CONSTRUCTION PURPOSES, AS DEFINED HEREIN, INCLUDING THE RIGHT TO OPERATE NECESSARY EQUIPMENT THEREON, THE RIGHT OF INGRESS AND EGRESS, AS LONG AS REQUIRED FOR SUCH PUBLIC PURPOSE, INCLUDING THE RIGHT TO PRESERVE, PROTECT, REMOVE, OR PLANT THEREON ANY VEGETATION THAT THE HIGHWAY AUTHORITIES MAY DEEM DESIRABLE. ALL (TLES) ON THIS PLAT EXPIRE AT THE COMPLETION OF THE CONSTRUCTION PROJECT FOR WHICH THIS INSTRUMENT IS GIVEN.

A PERMANENT LIMITED EASEMENT (PLE) IS A RIGHT FOR CONSTRUCTION AND MAINTENANCE PURPOSES, AS DEFINED HEREIN, INCLUDING THE RIGHT TO OPERATE NECESSARY EQUIPMENT THEREON AND THE RIGHT OF INGRESS AND EGRESS, AS LONG AS REQUIRED FOR SUCH PUBLIC PURPOSE, INCLUDING THE RIGHT TO PRESERVE, PROTECT, REMOVE, OR PLANT THEREON ANY VEGETATION THAT THE HIGHWAY AUTHORITIES MAY DEEM DESIRABLE, BUT WITHOUT PREJUDICE TO THE OWNER'S RIGHTS TO MAKE OR CONSTRUCT IMPROVEMENTS ON SAID LANDS OR TO FLATTEN THE SLOPES, PROVIDING SAID ACTIVITIES WILL NOT IMPAIR OR OTHERWISE ADVERSELY AFFECT THE HIGHWAY FACILITIES.

AN EASEMENT FOR HIGHWAY PURPOSES (HE), AS LONG AS SO USED, INCLUDING THE RIGHT TO PRESERVE, PROTECT, REMOVE, OR PLANT THEREON ANY VEGETATION THAT THE HIGHWAY AUTHORITIES MAY DEEM DESIRABLE.

PROPERTY LINES SHOWN ON THIS PLAT ARE DRAWN FROM DATA DERIVED FROM MAPS AND DOCUMENTS OF PUBLIC RECORD AND/OR EXISTING OCCUPATIONAL LINES. THIS PLAT MAY NOT BE A TRUE REPRESENTATION OF EXISTING PROPERTY LINES, EXCLUDING RIGHT-OF-WAY, AND SHOULD NOT BE USED AS A SUBSTITUTE FOR AN ACCURATE FIELD SURVEY.

PARCEL IDENTIFICATION NUMBERS MAY NOT POINT TO ALL AREAS OF ACQUISITION, AS NOTED ON THE SCHEDULE OF LANDS & INTERESTS REQUIRED.

FOR EXISTING HIGHWAY RIGHT-OF-WAY AND ACCESS CONTROL POINTS OF REFERENCE SEE INDIVIDUAL TPP DETAIL PAGES

FOR CURRENT ACCESS/DRIVEWAY INFORMATION CONTACT THE WISCONSIN DEPARTMENT OF TRANSPORTATION REGIONAL OFFICE IN LA CROSSE.

PROJECT NUMBER 7930-08-20-401
SHEET 2 OF 2

216

