

Doc No. 1724109

TRANSPORTATION PROJECT PLAT NO: 5120-03-22-4.09

PART OF THE SOUTHEAST 1/4 OF SECTION 4, AND PART OF THE NORTHEAST 1/4 OF SECTION 9, TOWNSHIP 15 NORTH, RANGE 7 WEST, CITY OF LA CROSSE, LA CROSSE COUNTY, WISCONSIN.

CITY OF LA CROSSE, JACKSON STREET-STATE ROAD, 3RD STREET TO 23RD STREET, LA CROSSE COUNTY, WI TO PROPERLY ESTABLISH, LAY OUT, WIDEN, ENLARGE, EXTEND, CONSTRUCT, IMPROVE, OR MAINTAIN A PORTION OF THE HIGHWAY DESIGNATED ABOVE, THE CITY OF LA CROSSE DEEMS IT NECESSARY TO RELOCATE OR CHANGE SAID HIGHWAY AND ACQUIRE CERTAIN LANDS AND INTERESTS OR RIGHTS IN LANDS FOR THE ABOVE PROJECT.

TO EFFECT THIS CHANGE, PURSUANT TO AUTHORITY GRANTED UNDER SECTION 62.22, WISCONSIN STATUTES, THE CITY OF LA CROSSE HEREBY ORDERS THAT:

1. THAT PORTION OF SAID HIGHWAY AS SHOWN ON THIS PLAT BE LAY OUT AND ESTABLISHED TO THE LINES AND WIDTHS AS SO SHOWN FOR THE ABOVE PROJECT.
2. THE LANDS OR INTERESTS OR RIGHTS IN LANDS AS SHOWN ON THIS PLAT BE REQUIRED BY THE CITY OF LA CROSSE FOR THE ABOVE PROJECT AND SHALL BE ACQUIRED IN THE NAME OF THE CITY OF LA CROSSE, PURSUANT TO THE PROVISIONS OF SECTION 62.22, WISCONSIN STATUTES.

NOTES:

POSITIONS SHOWN ON THIS PLAT ARE WISCONSIN COUNTY COORDINATE SYSTEM (NCS) LA CROSSE COUNTY, NAD 83 (2011), IN US SURVEY FEET. VALUES SHOWN ARE GRID COORDINATES, GRID BEARINGS, AND GRID DISTANCES. GRID DISTANCES MAY BE USED AS GROUND DISTANCES.

NGS CONTROL POINT UTILIZED: PID: DHS494, DESIGNATION: SHELBY GPS, LA CROSSE COUNTY, WI.

RIGHT-OF-WAY BOUNDARIES ARE DEFINED WITH COURSES OF THE PERMETER OF THE HIGHWAY LANDS REFERENCED TO THE U.S. PUBLIC LAND SURVEY OR OTHER SURVEYS OF RECORD.

REFERENCE LINE NOT NECESSARILY CONSTRUCTION REFERENCE LINE.

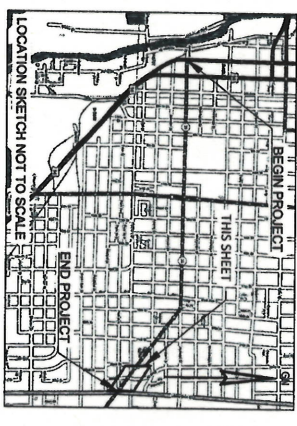
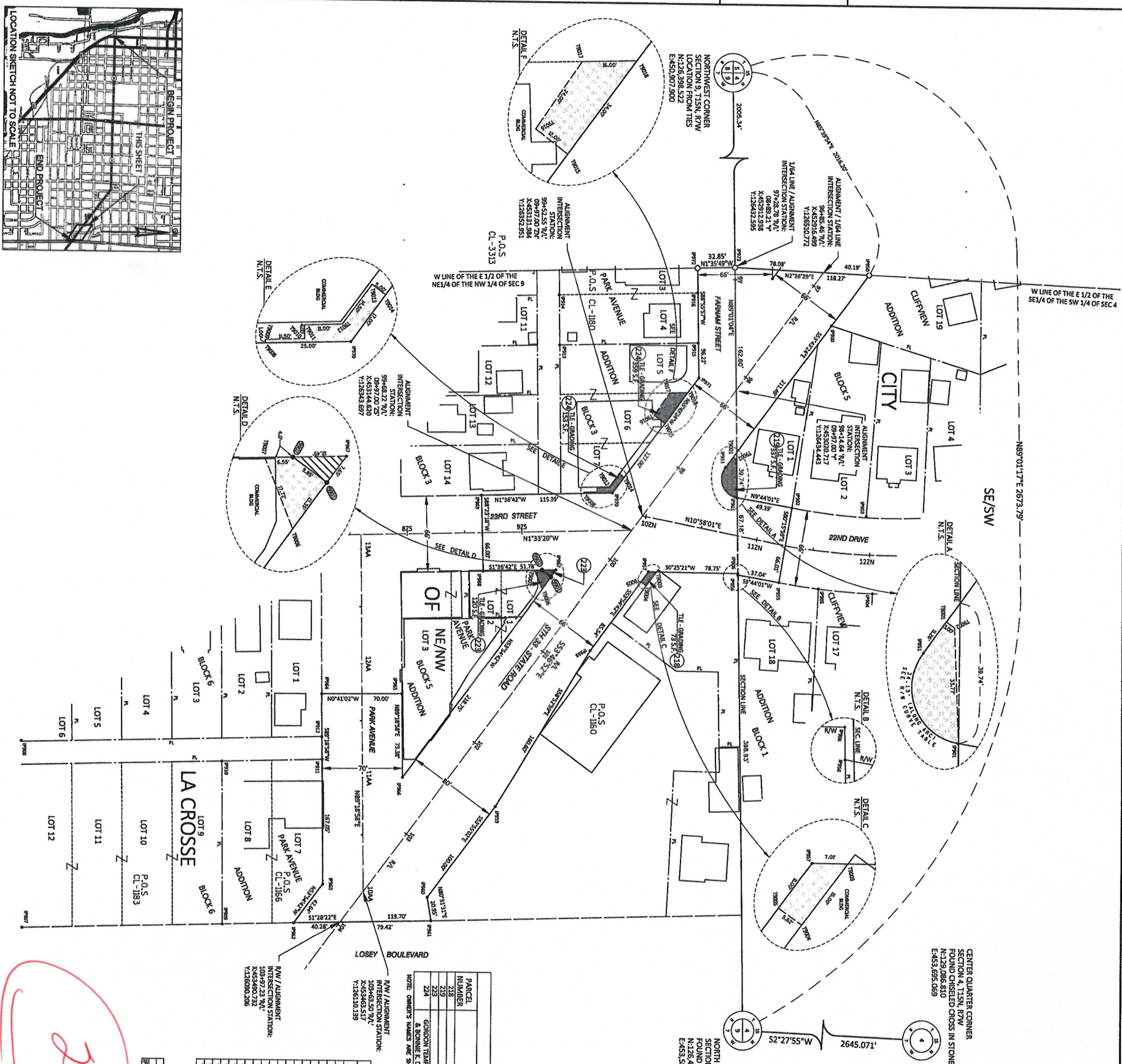
PROPERTY LINES SHOWN ON THIS PLAT ARE DRAWN FROM DATA DERIVED FROM MAPS AND DOCUMENTS OF PUBLIC RECORD AND/OR EXISTING OCCUPANCY LINES. EXCLUDING RIGHT-OF-WAY LINES THIS PLAT MAY NOT BE A TRUE REPRESENTATION OF EXISTING PROPERTY LINES AND SHOULD NOT BE USED AS A SUBSTITUTE FOR AN ACCURATE FIELD SURVEY.

FOR THE LATEST ACCESS/DRIVEWAY INFORMATION, CONTACT THE CITY OF LA CROSSE, AND/OR THE WISCONSIN DEPARTMENT OF TRANSPORTATION REGIONAL OFFICE IN LA CROSSE, WI.

EXISTING HIGHWAY RIGHT-OF-WAY FOR STATE HIGHWAY 33/JACKSON STREET SHOWN HEREIN IS BASED ON THE FOLLOWING POINTS OF REFERENCE:

TPI: 5991-00-13, PARK AVENUE ADDITION, CLIFFVIEW ADDITION, P.O.S. CL-1160, P.O.S. CL-1166, P.O.S. CL-1183, P.O.S. CL-1180 AND P.O.S. CL-3313.

BUILDING LOCATIONS WERE PROVIDED TO PARAGON ASSOCIATES BY WISCONSIN DEPARTMENT OF TRANSPORTATION. BUILDINGS WILL NOT BE AFFECTED BY TILES.



SCHEDULE OF LANDS & INTERESTS REQUIRED

PARCEL NUMBER	OWNER(S)	INTEREST REQUIRED	TILE	P.L.E.
218	STONER PROPERTIES, LLC	7/8	337	X
219	NANCY L. ALLEN	1/2	337	X
220	LA CROSSE CITY	3/8	337	X
224	GORDON TEMP & LAURET TRUST; JAMES G. DUNSMON; & BONNIE K. DUNSMON; MILWAUKEE LUMBER; DOUGLASS/DUNSMON/LLC	3/8	312	X

NOTE: OWNER'S NAMES ARE SHOWN FOR REFERENCE PURPOSES ONLY AND ARE SUBJECT TO CHANGE PRIOR TO THE SUBMITTAL OF LAND INTERESTS TO THE DEPARTMENT.

COORDINATE TABLE - TILE POINTS

PT.#	STATION	OFFSET	Y	X
T0001	89483.44	33.27	136452.447	458079.742
T0002	89483.44	33.27	136452.448	458081.500
T0003	89483.44	33.27	136452.449	458083.258
T0004	89483.44	33.27	136452.450	458085.016
T0005	89483.44	33.27	136452.451	458086.774
T0006	89483.44	33.27	136452.452	458088.532
T0007	89483.44	33.27	136452.453	458090.290
T0008	89483.44	33.27	136452.454	458092.048
T0009	89483.44	33.27	136452.455	458093.806
T0010	89483.44	33.27	136452.456	458095.564
T0011	89483.44	33.27	136452.457	458097.322
T0012	89483.44	33.27	136452.458	458099.080
T0013	89483.44	33.27	136452.459	458100.838
T0014	89483.44	33.27	136452.460	458102.596
T0015	89483.44	33.27	136452.461	458104.354
T0016	89483.44	33.27	136452.462	458106.112
T0017	89483.44	33.27	136452.463	458107.870
T0018	89483.44	33.27	136452.464	458109.628
T0019	89483.44	33.27	136452.465	458111.386
T0020	89483.44	33.27	136452.466	458113.144
T0021	89483.44	33.27	136452.467	458114.902
T0022	89483.44	33.27	136452.468	458116.660
T0023	89483.44	33.27	136452.469	458118.418
T0024	89483.44	33.27	136452.470	458120.176
T0025	89483.44	33.27	136452.471	458121.934
T0026	89483.44	33.27	136452.472	458123.692
T0027	89483.44	33.27	136452.473	458125.450
T0028	89483.44	33.27	136452.474	458127.208
T0029	89483.44	33.27	136452.475	458128.966
T0030	89483.44	33.27	136452.476	458130.724
T0031	89483.44	33.27	136452.477	458132.482
T0032	89483.44	33.27	136452.478	458134.240
T0033	89483.44	33.27	136452.479	458135.998
T0034	89483.44	33.27	136452.480	458137.756
T0035	89483.44	33.27	136452.481	458139.514
T0036	89483.44	33.27	136452.482	458141.272
T0037	89483.44	33.27	136452.483	458143.030
T0038	89483.44	33.27	136452.484	458144.788
T0039	89483.44	33.27	136452.485	458146.546
T0040	89483.44	33.27	136452.486	458148.304
T0041	89483.44	33.27	136452.487	458150.062
T0042	89483.44	33.27	136452.488	458151.820
T0043	89483.44	33.27	136452.489	458153.578
T0044	89483.44	33.27	136452.490	458155.336
T0045	89483.44	33.27	136452.491	458157.094
T0046	89483.44	33.27	136452.492	458158.852
T0047	89483.44	33.27	136452.493	458160.610
T0048	89483.44	33.27	136452.494	458162.368
T0049	89483.44	33.27	136452.495	458164.126
T0050	89483.44	33.27	136452.496	458165.884
T0051	89483.44	33.27	136452.497	458167.642
T0052	89483.44	33.27	136452.498	458169.400
T0053	89483.44	33.27	136452.499	458171.158
T0054	89483.44	33.27	136452.500	458172.916
T0055	89483.44	33.27	136452.501	458174.674
T0056	89483.44	33.27	136452.502	458176.432
T0057	89483.44	33.27	136452.503	458178.190
T0058	89483.44	33.27	136452.504	458179.948
T0059	89483.44	33.27	136452.505	458181.706
T0060	89483.44	33.27	136452.506	458183.464
T0061	89483.44	33.27	136452.507	458185.222
T0062	89483.44	33.27	136452.508	458186.980
T0063	89483.44	33.27	136452.509	458188.738
T0064	89483.44	33.27	136452.510	458190.496
T0065	89483.44	33.27	136452.511	458192.254
T0066	89483.44	33.27	136452.512	458194.012
T0067	89483.44	33.27	136452.513	458195.770
T0068	89483.44	33.27	136452.514	458197.528
T0069	89483.44	33.27	136452.515	458199.286
T0070	89483.44	33.27	136452.516	458201.044
T0071	89483.44	33.27	136452.517	458202.802
T0072	89483.44	33.27	136452.518	458204.560
T0073	89483.44	33.27	136452.519	458206.318
T0074	89483.44	33.27	136452.520	458208.076
T0075	89483.44	33.27	136452.521	458209.834
T0076	89483.44	33.27	136452.522	458211.592
T0077	89483.44	33.27	136452.523	458213.350
T0078	89483.44	33.27	136452.524	458215.108
T0079	89483.44	33.27	136452.525	458216.866
T0080	89483.44	33.27	136452.526	458218.624
T0081	89483.44	33.27	136452.527	458220.382
T0082	89483.44	33.27	136452.528	458222.140
T0083	89483.44	33.27	136452.529	458223.898
T0084	89483.44	33.27	136452.530	458225.656
T0085	89483.44	33.27	136452.531	458227.414
T0086	89483.44	33.27	136452.532	458229.172
T0087	89483.44	33.27	136452.533	458230.930
T0088	89483.44	33.27	136452.534	458232.688
T0089	89483.44	33.27	136452.535	458234.446
T0090	89483.44	33.27	136452.536	458236.204
T0091	89483.44	33.27	136452.537	458237.962
T0092	89483.44	33.27	136452.538	458239.720
T0093	89483.44	33.27	136452.539	458241.478
T0094	89483.44	33.27	136452.540	458243.236
T0095	89483.44	33.27	136452.541	458244.994
T0096	89483.44	33.27	136452.542	458246.752
T0097	89483.44	33.27	136452.543	458248.510
T0098	89483.44	33.27	136452.544	458250.268
T0099	89483.44	33.27	136452.545	458252.026
T0100	89483.44	33.27	136452.546	458253.784

COORDINATE TABLE - FEE POINTS

PT.#	STATION	OFFSET	Y	X
F001	100441.53	42.27	136272.280	453188.047
F002	100441.53	42.27	136272.281	453189.805
F003	100441.53	42.27	136272.282	453191.563
F004	100441.53	42.27	136272.283	453193.321
F005	100441.53	42.27	136272.284	453195.079
F006	100441.53	42.27	136272.285	453196.837
F007	100441.53	42.27	136272.286	453198.595
F008	100441.53	42.27	136272.287	453200.353
F009	100441.53	42.27	136272.288	453202.111
F010	100441.53	42.27	136272.289	453203.869
F011	100441.53	42.27	136272.290	453205.627
F012	100441.53	42.27	136272.291	453207.385
F013	100441.53	42.27	136272.292	453209.143
F014	100441.53	42.27	136272.293	453210.901
F015	100441.53	42.27	136272.294	453212.659
F016	100441.53	42.27	136272.295	453214.417
F017	100441.53	42.27	136272.296	453216.175
F018	100441.53	42.27	136272.297	453217.933
F019	100441.53	42.27	136272.298	453219.691
F020	100441.53	42.27	136272.299	453221.449
F021	100441.53	42.27	136272.300	453223.207
F022	100441.53	42.27	136272.301	453224.965
F023	100441.53	42.27	136272.302	453226.723
F024	100441.53	42.27	136272.303	453228.481
F025	100441.53	42.27	136272.304	453230.239
F026	100441.53	42.27	136272.305	453231.997
F027	100441.53	42.27	136272.306	453233.755
F028	100441.53	42.27	136272.307	453235.513
F029	100441.53	42.27	136272.308	453237.271
F030	100441.53	42.27	136272.309	453239.029
F031	100441.53	42.27	136272.310	453240.787
F032	100441.53	42.27	136272.311	453242.545
F033	100441.53	42.27	136272.312	453244.303
F034	100441.53	42.27	136272.313	453246.061
F035	100441.53	42.27	136272.314	453247.819
F036	100441.53	42.27	136272.315	453249.577
F037	100441.53	42.27	136272.316	453251.335
F038	100441.53	42.27	136272.317	453253.093
F039	100441.53	42.27	136272.318	453254.851
F040	100441.53	42.27	136272.319	453256.609
F041	100441.53	42.27	136272.320	453258.367
F042	100441.53	42.27	136272.321	453260.125
F043	100441.53	42.27	136272.322	453261.883
F044	100441.53	42.27	136272.323	453263.641
F045	100441.53	42.27	136272.324	453265.399
F046	100441.53	42.27	136272.325	453267.157
F047	100441.53	42.27	136272.326	453268.915
F048	100441.53	42.27	136272.327	453270.673
F049	100441.53	42.27	136272.328	453272.431
F050	100441.53	42.27	136272.329	453274.189
F051	100441.53	42.27	136272.330	453275.947
F052	100441.53	42.27	136272.331	453277.705
F053	100441.53	42.27	136272.332	453279.463
F054	100441.53	42.27	136272.333	453281.221
F055	100441.53	42.27	136272.334	453282.979
F056	100441.53	42.27	136272.335	