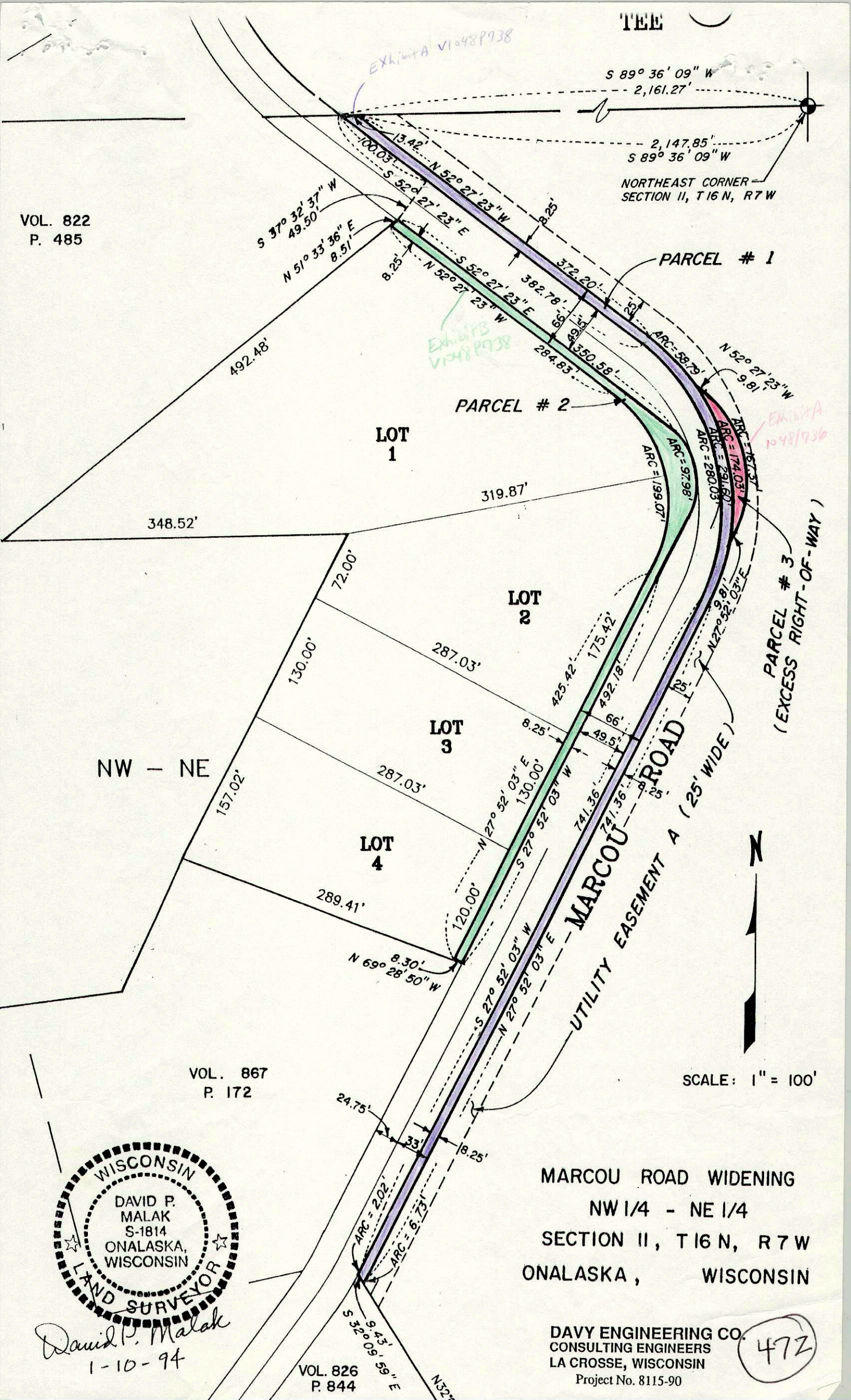
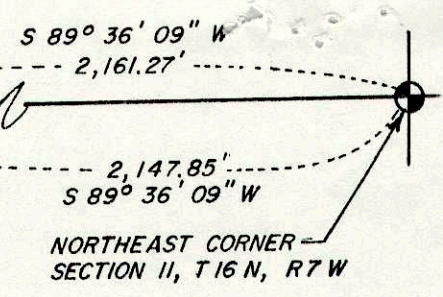


TEL

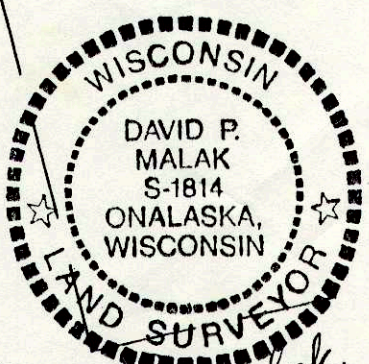
EXHIBIT A VI 48 P 738

VOL. 822
P. 485



VOL. 867
P. 172

SCALE: 1" = 100'



David P. Malak
1-10-94

MARCOU ROAD WIDENING
NW 1/4 - NE 1/4
SECTION II, T 16 N, R 7 W
ONALASKA, WISCONSIN

DAVY ENGINEERING CO.
CONSULTING ENGINEERS
LA CROSSE, WISCONSIN
Project No. 8115-90

472

VOL. 826
P. 844