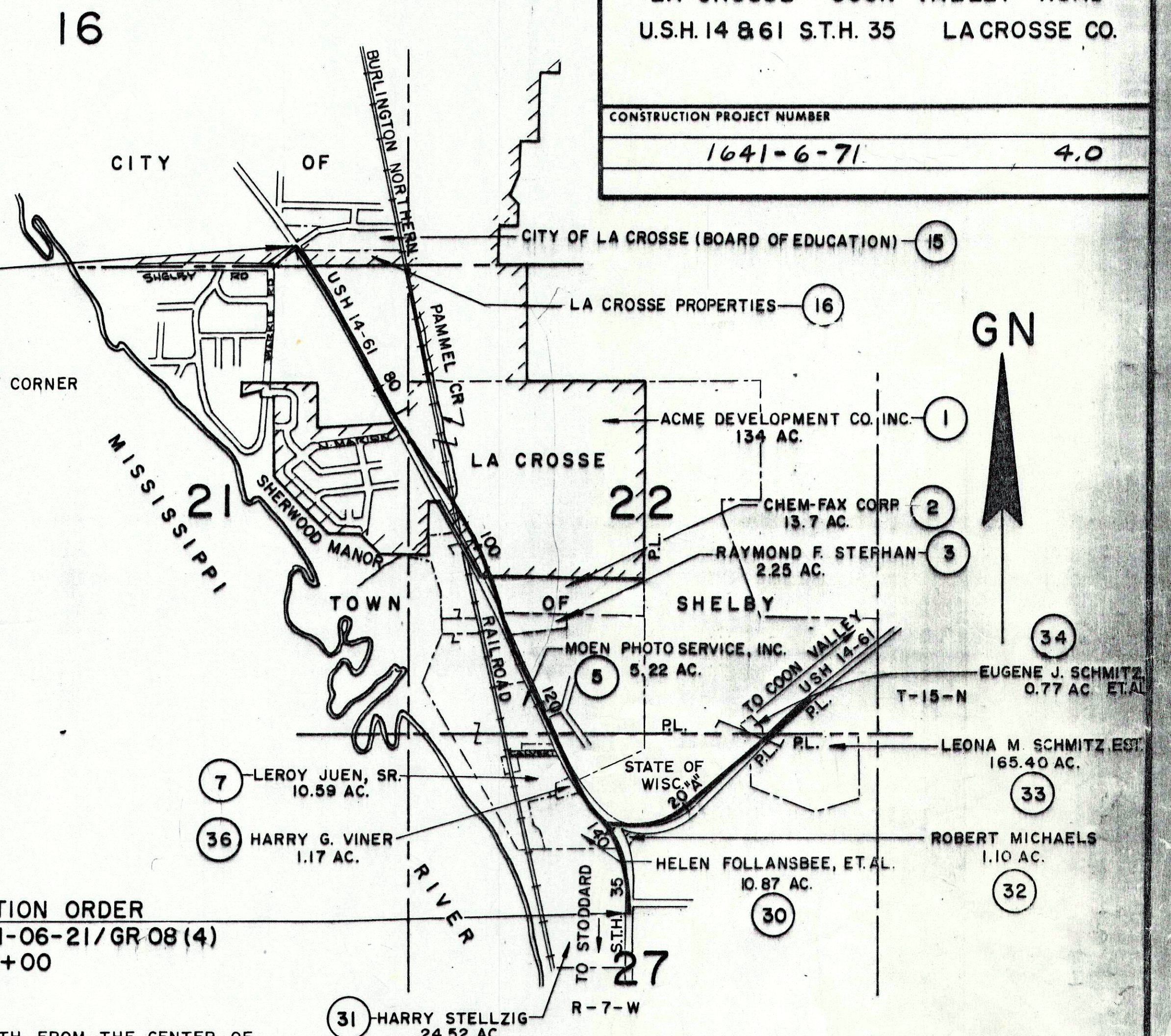


SCHEDULE OF LANDS AND INTERESTS REQUIRED									
PARCEL NUMBER	SHEET NUMBER	OWNER	INTEREST	L.H.E. ACRES	ACRES REQUIRED			TOTAL REMAINING ACRES	OPERATIONS PROJECT I.D.
					NEW	EXIST	TOTAL		
1	4.2,4.3	ACME DEVELOPMENT CO.	FEE SIMPLE		5.32	--	5.32	128.68	1641-06-21
2	4.3,4.4	CHEM-FAX CORPORATION	FEE & L.H.E.	0.02	0.63	--	0.63	13.07	"
3	4.4	RAYMOND F. STEPHAN	FEE SIMPLE		0.01	--	0.01	2.24	"
4	"	CARL R. SCHLICHT	L.H.E.	0.09					"
5	4.4,4.5	MOEN PHOTO SERVICE	FEE SIMPLE & L.H.E.	0.19	0.11	--	0.11	5.11	"
6	4.5	ROY E. JUEN	FEE SIMPLE		0.14		0.14	0.76	"
7	"	LE ROY JUEN, SR.	FEE, L.H.E. & ACCESS RIGHTS	0.11	0.54	--	0.54	10.05	"
8	4.1,4.2	CITY OF LA CROSSE (WATER UTILITY)	RELEASE OF RIGHTS						1641-06-40
9	4.2,4.3	CITY OF LA CROSSE (SANITARY SEWAGE UTILITY)	RELEASE OF RIGHTS						1641-06-41
10	4.3,4.4	NORTHERN STATES POWER CO.	"						1641-06-42
11	4.3	LA CROSSE TEL. CO.	"						1641-06-43
12	4.2,4.3	CITY OF LA CROSSE (STORM SEWER)	RELEASE OF RIGHTS						1641-06-44
13	4.3	BURLINGTON NORTHERN RAILROAD	AGREEMENT						1641-06-21
14	4.3	NORTHERN STATES POWER CO.	RELEASE OF RIGHTS						1641-06-42
1-01	4.2	NATIONAL ADVERTISING CO.	SIGN ACQUISITION						1641-06-21
1-02	"	HOESCHLER REALTY CORP.	"						"
1-03	4.3	COLLINS-LA CROSSE SIGN CORP.	"						"
2-01	4.4	COLLINS-LA CROSSE SIGN CORP.	"						"
15	4.1	CITY OF LA CROSSE, BOARD OF EDUCATION	FEE & L.H.E.	0.01	0.01		0.01		"
16	"	LA CROSSE PROPERTIES	"	0.01	0.02		0.02		"
17	"	BOBBIE B. CHRISTIANSON	"	0.01	0.01		0.01		"
19	"	LILLIAN SCHILLING	"	0.01					"
20	"	EDNA T. MONSKI ESTATE TRUST	"	0.02					"
21	"	HAZEL BRAUN, ET AL.	"	0.06					"
22	"	CHARLES C. COLLINS	"	0.04					"
23	"	THOMAS S. THOMPSON	"	0.01					"
24	"	ELMER R. ARNOLD	"	0.01					"
25	4.1,4.2	CLARENCE O. ZIELKE	"	0.02					"
26	4.2	CHARLES P. NICHOLS, ET AL.	"	0.01					"
27	"	RAYMOND LEE	FEE & L.H.E.	0.02	0.01		0.01		"
28	"	EUGENE G. LEONARD, ET AL.	"	0.02	0.01		0.01		"
29	4.1	JAY FRANK HOESCHLER	"	0.02	0.02		0.02		"
30	4.5,6,8	HELEN FOLLANSBEE, ET AL.	FEE & L.H.E. & ACCESS RIGHTS	0.42	2.73	1.5	4.23	6.64	"
31	4.6,4.8	HARRY STELLZIG	FEE & ACCESS RIGHTS		0.30	0.5	0.80	23.72	"
32	4.6,4.8	ROBERT MICHAELS	FEE, L.H.E. & ACCESS RIGHTS	0.02	0.25	0.57	0.82	0.52	"
33	4.7	LEONA M. SCHMITZ ESTATE	FEE, L.H.E. & ACCESS RTS.	0.02	0.70	1.4	2.10	163.30	"
34	4.7	EUGENE J. SCHMITZ, ET AL.	FEE & ACCESS RIGHTS		0.12	0.12	0.65		"
32-01	4.6	COLLINS-LA CROSSE SIGN CORP.	SIGN ACQUISITION						"
33-01	4.7	NATIONAL ADVERTISING CO.	"						"
33-03	"	WHITE ADVERTISING INTERNATIONAL	"						"
33-04	"	CLARK REFINERY CORP.	"						"
36	4.5	HARRY G. VINER	FEE & L.H.E. & ACCESS RIGHTS	0.11	0.49		0.49	0.68	1641-06-21
37	4.1	GERALD G. HASS, ET AL.	FEE SIMPLE		0.01				"
38	4.5	THOMAS C. BROBECK	ACCESS RIGHTS						"
39	4.6,4.8	DONALD C. BETZ	"						"
40	4.6	ROBERT SHIMANSKI	"						"
41	4.7	EDGAR MUNDSTOCK	"						"
42	4.6	ROBERT MICHAELS	L.H.E.	0.02					"
42-01	4.6	ROBERT MICHAELS	SIGN ACQUISITION						"
43	4.8	TOWN OF SHELBY	FEE SIMPLE		0.01	0.01	0.22		"

BEGIN RELOCATION ORDER
PROJECT 1641-06-21/GR 08(4)
STATION 65+00
X = 1,679,388.68
Y = 647,257.55
N 77°14'47"W - 1163.5 FEET FROM THE SOUTHEAST CORNER
OF SECTION 16, T 15 N, R 7 W.

END RELOCATION ORDER
PROJECT 1641-06-21/GR 08(4)
STATION 146+00
X = 1,682,904.763
Y = 640,035.753
± 960 FEET NORTH FROM THE CENTER OF
SECTION 27, T 15 N, R 7 W.

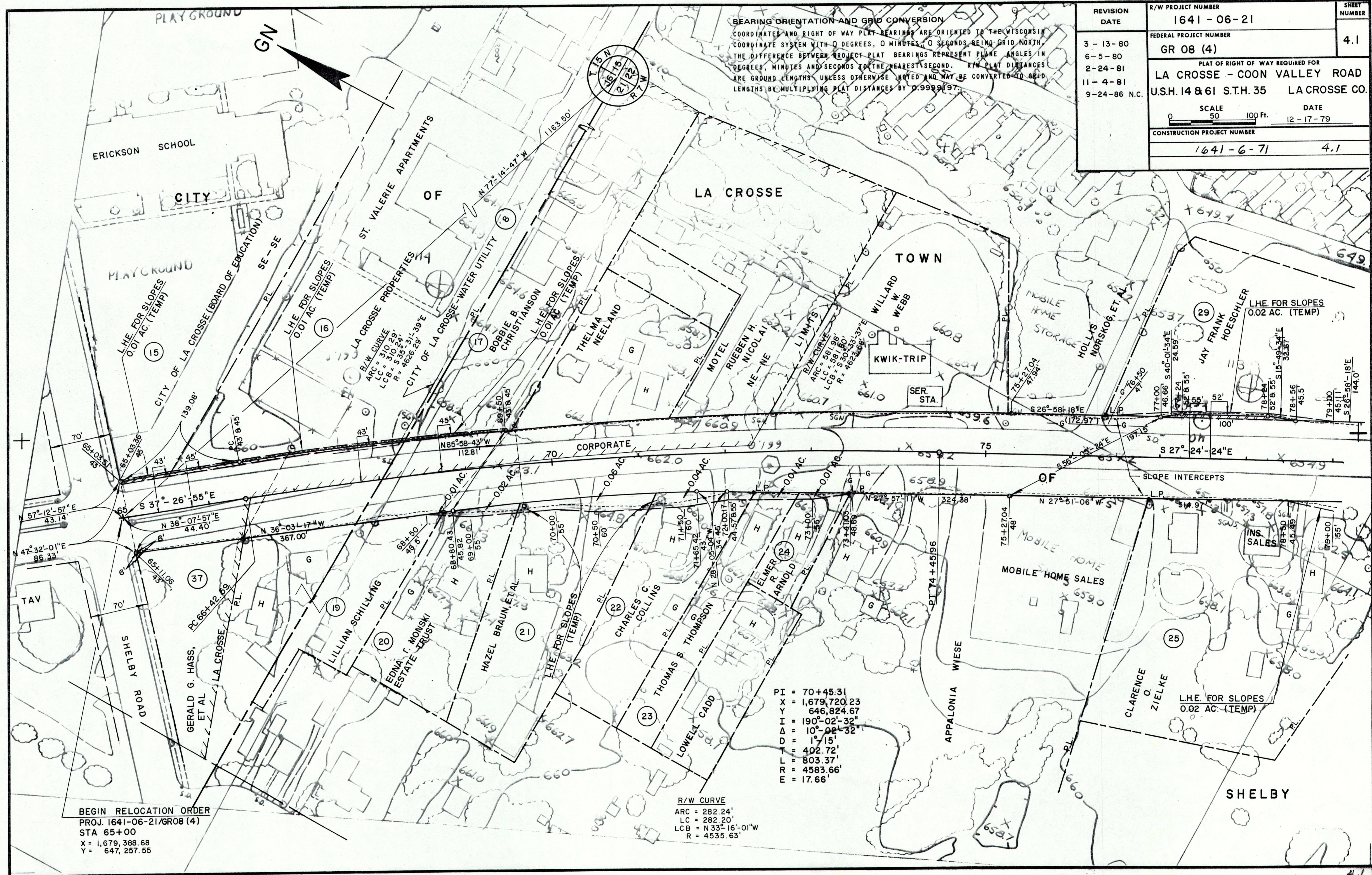


PROJECT LOCATION
PROPERTY BOUNDARIES AND ACREAGES
TOTAL NET CENTERLINE LENGTH = 1.534 MILES

R/W PROJECT NUMBER	1641-06-21	SHEET NUMBER	4.0	TOTAL SHEETS	
FEDERAL PROJECT NUMBER	GR 08(4)				
PLAT OF RIGHT OF WAY REQUIRED FOR LA CROSSE - COON VALLEY ROAD U.S.H. 14 & 61 S.T.H. 35 LACROSSE CO.					
CONSTRUCTION PROJECT NUMBER	1641-6-71		4.0		

ALL COORDINATES SHOWN ON THIS PLAN ARE REFERENCED TO THE WISCONSIN COORDINATE SYSTEM, SOUTH ZONE.

REVISION DATE	STATE OF WISCONSIN DEPARTMENT OF TRANSPORTATION
12-17-79	
3-13-80	Approved: <i>TR Kinsey</i> Date: 7-19-79 District Transportation Director
6-5-80	
2-24-81	
11-4-81	Approved: <i>B.S. Muller</i> Date: 7/23/79 Director, Bureau of Real Estate
9-24-86	
	U.S. DEPARTMENT OF TRANSPORTATION FEDERAL HIGHWAY ADMINISTRATION REGION 5 WISCONSIN DIVISION
	Approved: <i>(Signature)</i> Date: <i>(Date)</i> Division Administrator



BEARING ORIENTATION AND GRID CONVERSION
 COORDINATES AND RIGHT OF WAY PLAT BEARINGS ARE ORIENTED TO THE WISCONSIN COORDINATE SYSTEM WITH 0 DEGREES, 0 MINUTES, 0 SECONDS BEING GRID NORTH. THE DIFFERENCE BETWEEN PROJECT PLAT BEARINGS REPRESENT PLANE ANGLES IN DEGREES, MINUTES AND SECONDS TO THE NEAREST SECOND. R/W PLAT DISTANCES ARE GROUND LENGTHS UNLESS OTHERWISE NOTED AND MAY BE CONVERTED TO GRID LENGTHS BY MULTIPLYING PLAT DISTANCES BY 0.9999197.

REVISION DATE	R/W PROJECT NUMBER	SHEET NUMBER
3-13-80	1641-06-21	4.1
6-5-80	FEDERAL PROJECT NUMBER	
2-24-81	GR 08 (4)	
11-4-81	PLAT OF RIGHT OF WAY REQUIRED FOR	
9-24-86 N.C.	LA CROSSE - COON VALLEY ROAD	
	U.S.H. 14 & 61 S.T.H. 35	LA CROSSE CO.
	SCALE 50 100 Ft.	DATE 12-17-79
	CONSTRUCTION PROJECT NUMBER	
	1641-6-71	4.1

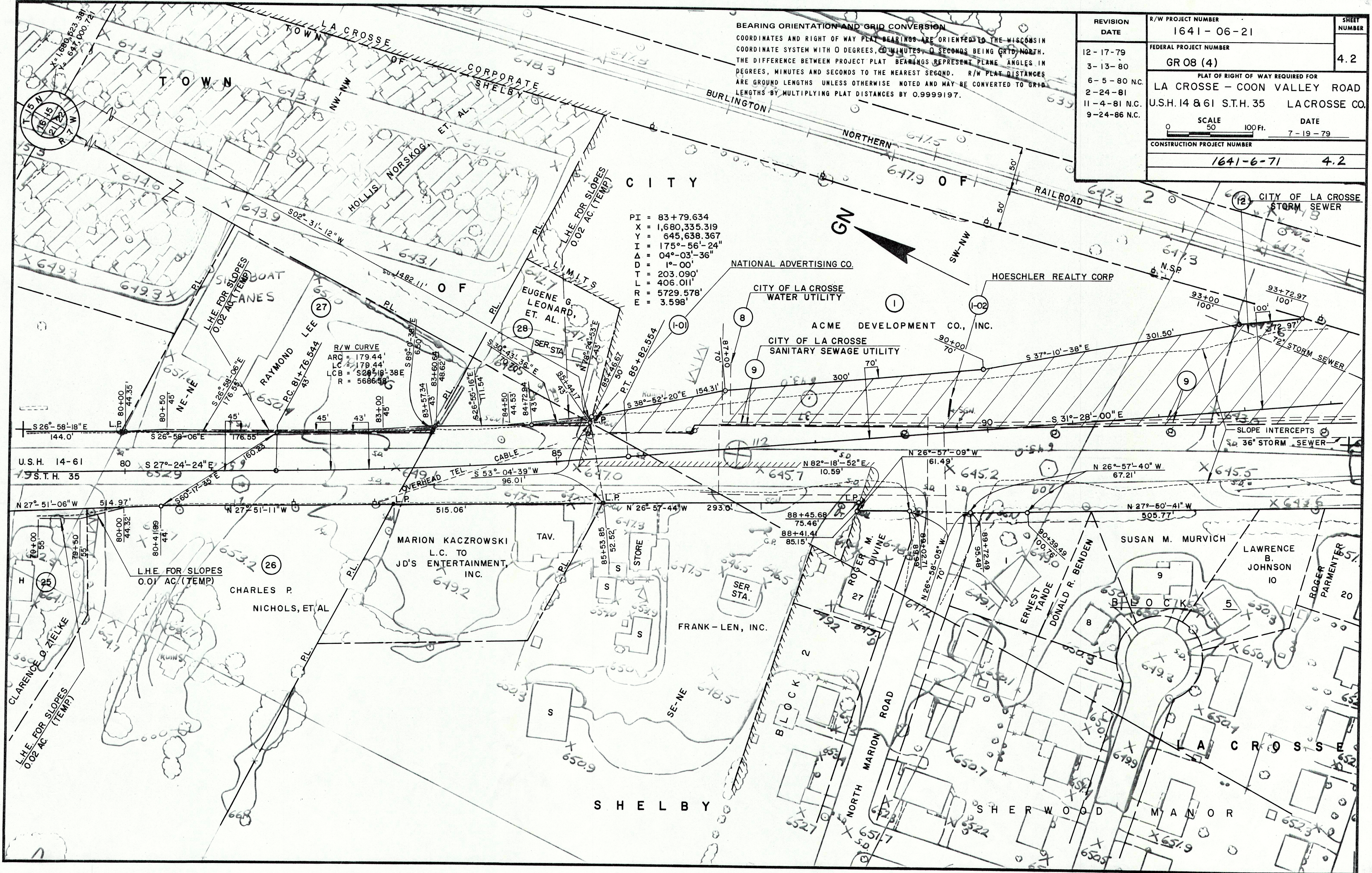
BEGIN RELOCATION ORDER
 PROJ. 1641-06-21/GR08 (4)
 STA 65+00
 X = 1,679,388.68
 Y = 647,257.55

R/W CURVE
 ARC = 282.24'
 LC = 282.20'
 LCB = N 33° 16' 01" W
 R = 4535.63'

PI = 70+45.31
 X = 1,679,720.23
 Y = 646,824.67
 I = 190° 02' 32"
 Δ = 10° 02' 32"
 D = 1° 15'
 T = 402.72'
 L = 803.37'
 R = 4583.66'
 E = 17.66'

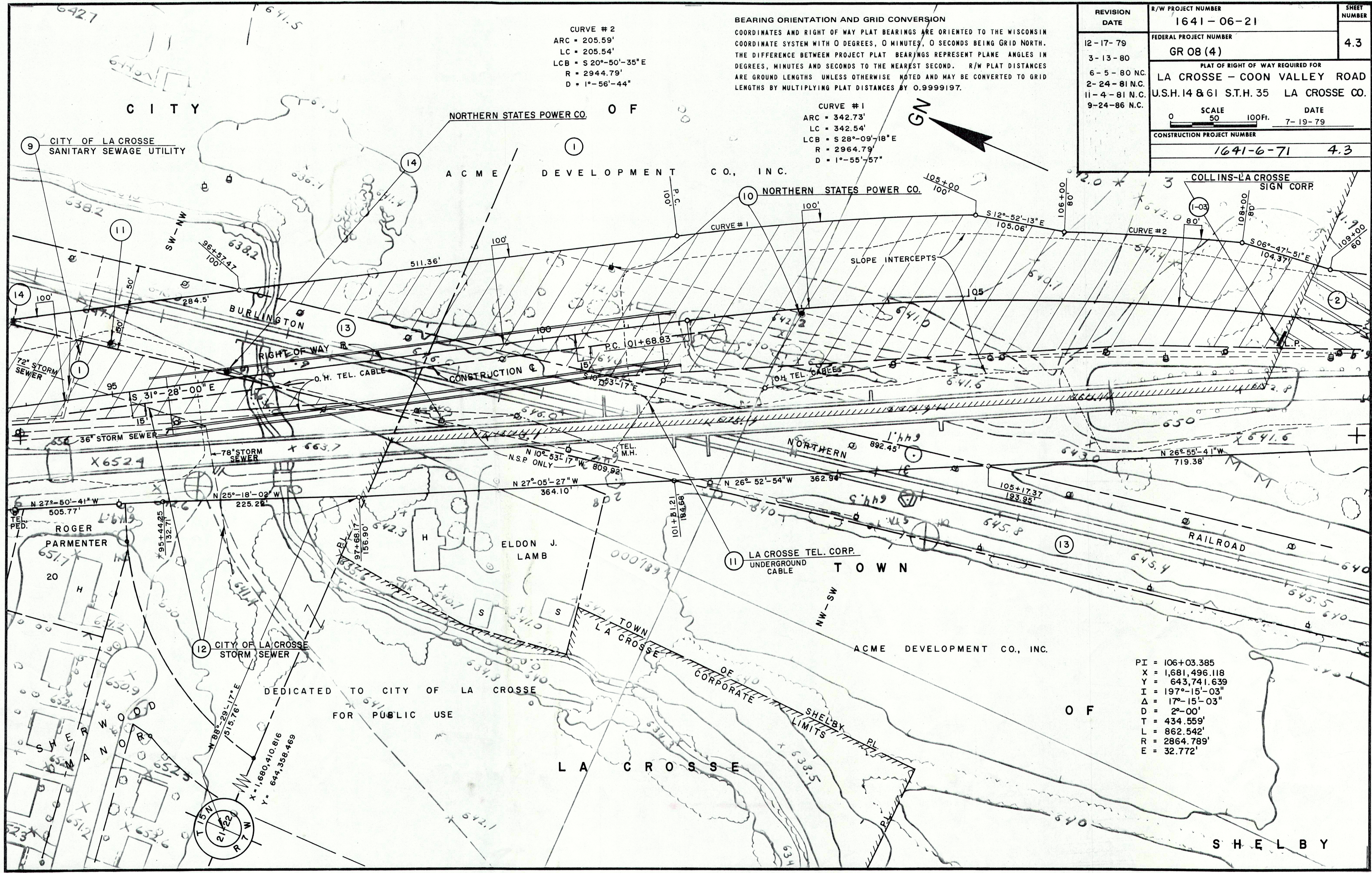
BEARING ORIENTATION AND GRID CONVERSION
 COORDINATES AND RIGHT OF WAY PLAT BEARINGS ARE ORIENTED TO THE WISCONSIN COORDINATE SYSTEM WITH 0 DEGREES, 0 MINUTES, 0 SECONDS BEING GRID NORTH. THE DIFFERENCE BETWEEN PROJECT PLAT BEARINGS REPRESENT PLANE ANGLES IN DEGREES, MINUTES AND SECONDS TO THE NEAREST SECOND. R/W PLAT DISTANCES ARE GROUND LENGTHS UNLESS OTHERWISE NOTED AND MAY BE CONVERTED TO GRID LENGTHS BY MULTIPLYING PLAT DISTANCES BY 0.9999197.

REVISION DATE	R/W PROJECT NUMBER	SHEET NUMBER
12-17-79	1641-06-21	4.2
3-13-80	FEDERAL PROJECT NUMBER	
6-5-80 N.C.	GR 08 (4)	
2-24-81	PLAT OF RIGHT OF WAY REQUIRED FOR	
11-4-81 N.C.	LA CROSSE - COON VALLEY ROAD	
9-24-86 N.C.	U.S.H. 14 & 61 S.T.H. 35 LA CROSSE CO.	
	SCALE	DATE
	0 50 100 Ft.	7-19-79
	CONSTRUCTION PROJECT NUMBER	
	1641-6-71	4.2



PI = 83+79.634
 X = 1,680,335.319
 Y = 645,638.367
 I = 175°-56'-24"
 Δ = 04°-03'-36"
 D = 1°-00'
 T = 203.090'
 L = 406.011'
 R = 5729.578'
 E = 3.598'

R/W CURVE
 ARC = 179.44'
 L.C. = 179.44'
 L.O.B. = 528.18'-38"E
 R = 5686.48'



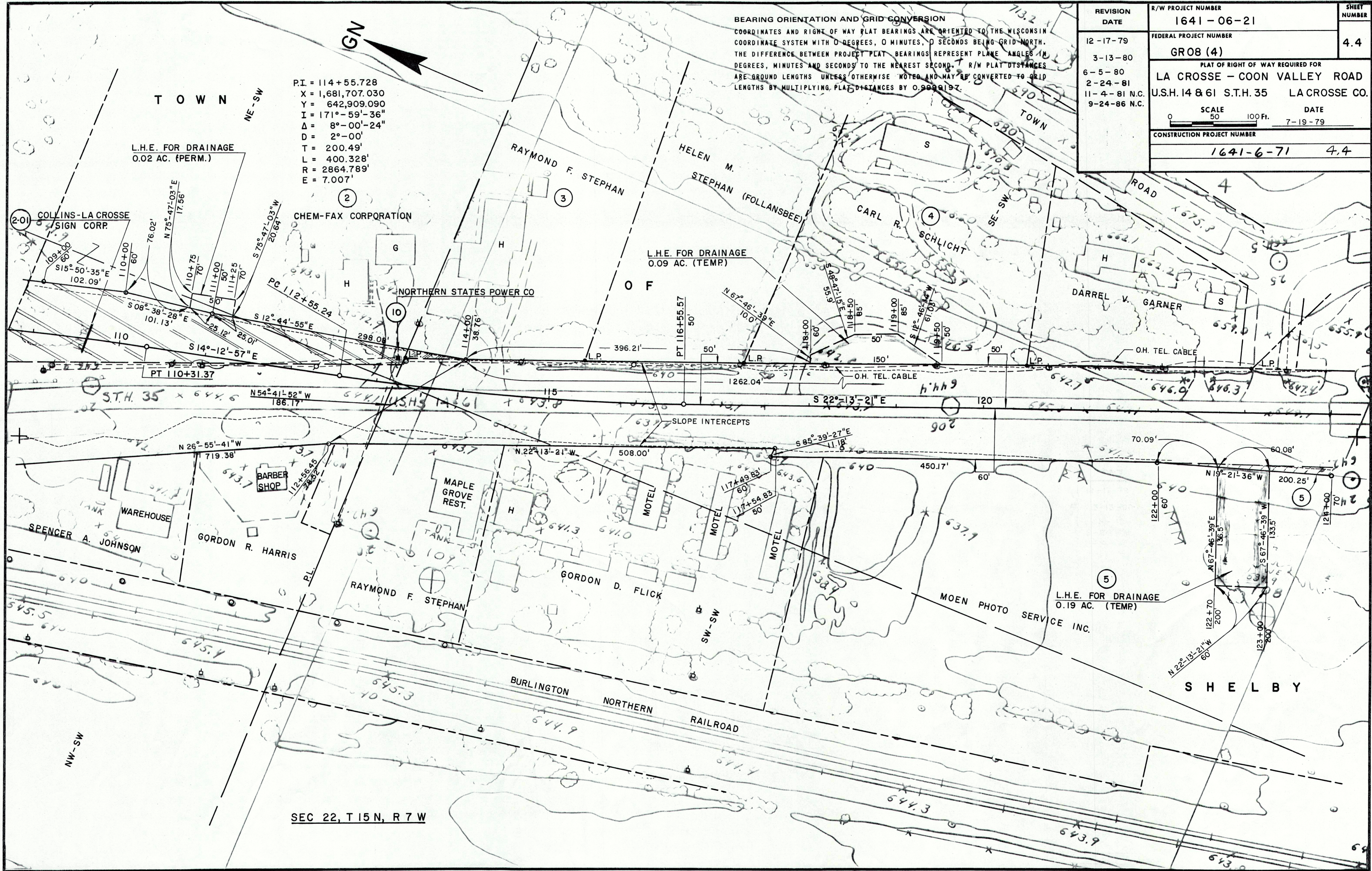
CURVE #2
 ARC = 205.59'
 LC = 205.54'
 LCB = S 20°-50'-35" E
 R = 2944.79'
 D = 1°-56'-44"

BEARING ORIENTATION AND GRID CONVERSION
 COORDINATES AND RIGHT OF WAY PLAT BEARINGS ARE ORIENTED TO THE WISCONSIN COORDINATE SYSTEM WITH 0 DEGREES, 0 MINUTES, 0 SECONDS BEING GRID NORTH. THE DIFFERENCE BETWEEN PROJECT PLAT BEARINGS REPRESENT PLANE ANGLES IN DEGREES, MINUTES AND SECONDS TO THE NEAREST SECOND. R/W PLAT DISTANCES ARE GROUND LENGTHS UNLESS OTHERWISE NOTED AND MAY BE CONVERTED TO GRID LENGTHS BY MULTIPLYING PLAT DISTANCES BY 0.9999197.

CURVE #1
 ARC = 342.73'
 LC = 342.54'
 LCB = S 28°-09'-18" E
 R = 2964.79'
 D = 1°-55'-57"

REVISION DATE	R/W PROJECT NUMBER	SHEET NUMBER
12-17-79	1641-06-21	4.3
3-13-80	FEDERAL PROJECT NUMBER	
6-5-80 N.C.	GR 08 (4)	
2-24-81 N.C.	PLAT OF RIGHT OF WAY REQUIRED FOR	
11-4-81 N.C.	LA CROSSE - COON VALLEY ROAD	
9-24-86 N.C.	U.S.H.14 & 61 S.T.H. 35 LA CROSSE CO.	
	SCALE 50 100 FT.	DATE 7-19-79
	CONSTRUCTION PROJECT NUMBER	
	1641-6-71	4.3

PI = 106+03.385
 X = 1,681,496.118
 Y = 643,741.639
 I = 197°-15'-03"
 Δ = 17°-15'-03"
 D = 2°-00'
 T = 434.559'
 L = 862.542'
 R = 2864.789'
 E = 32.772'

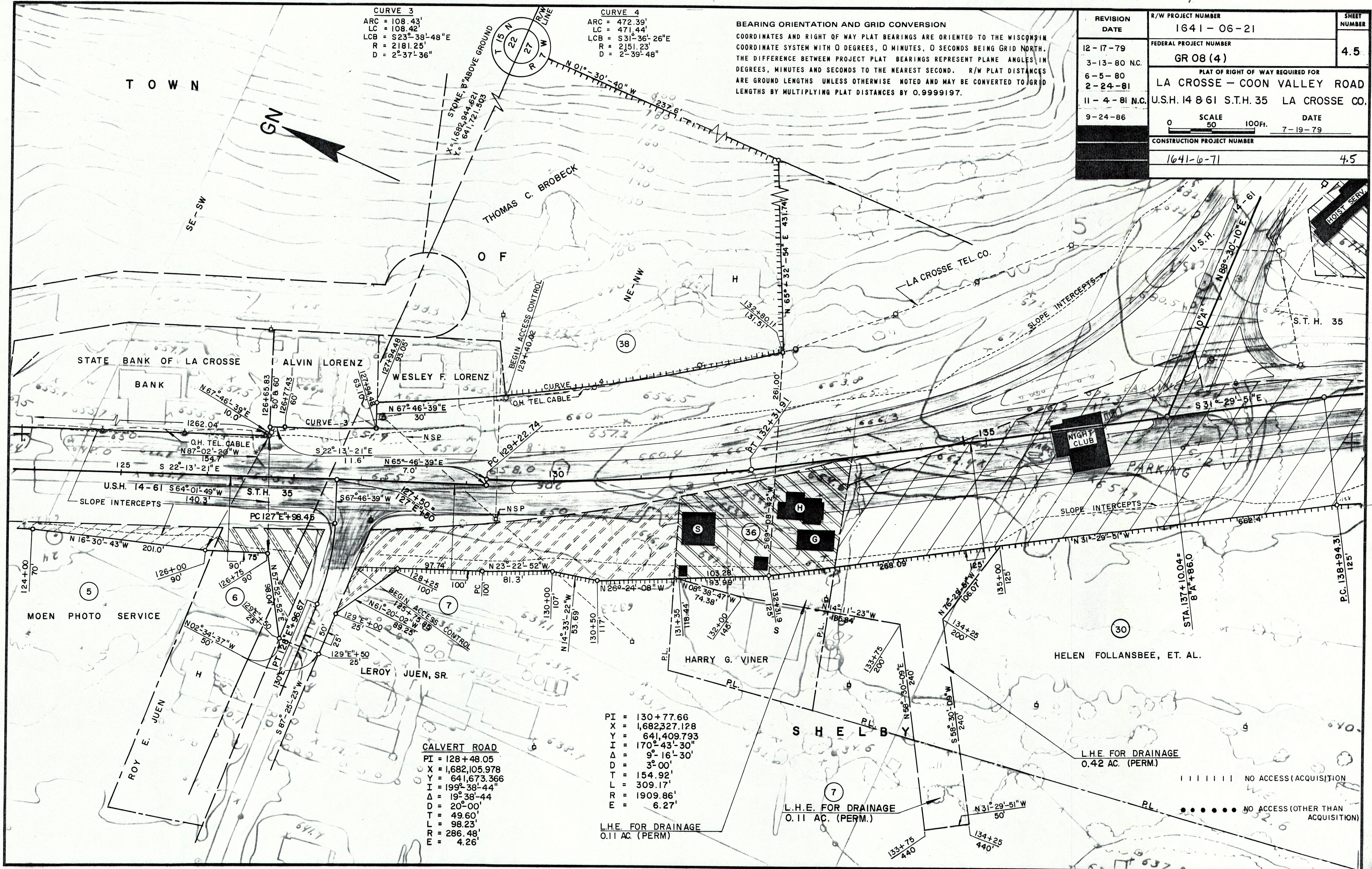


BEARING ORIENTATION AND GRID CONVERSION
 COORDINATES AND RIGHT OF WAY PLAT BEARINGS ARE ORIENTED TO THE WISCONSIN COORDINATE SYSTEM WITH 0 DEGREES, 0 MINUTES, 0 SECONDS BEING GRID NORTH. THE DIFFERENCE BETWEEN PROJECT PLAT BEARINGS REPRESENT PLANE ANGLES IN DEGREES, MINUTES AND SECONDS TO THE NEAREST SECOND. R/W PLAT DISTANCES ARE GROUND LENGTHS UNLESS OTHERWISE NOTED AND MAY BE CONVERTED TO GRID LENGTHS BY MULTIPLYING PLAT DISTANCES BY 0.9999197.

P.I. = 114+55.728
 X = 1,681,707.030
 Y = 642,909.090
 I = 171°-59'-36"
 Δ = 8°-00'-24"
 D = 2°-00'
 T = 200.49'
 L = 400.328'
 R = 2864.789'
 E = 7.007'

REVISION DATE	R/W PROJECT NUMBER	SHEET NUMBER
12-17-79	1641-06-21	4.4
3-13-80	FEDERAL PROJECT NUMBER	
6-5-80	GRO8 (4)	
2-24-81	PLAT OF RIGHT OF WAY REQUIRED FOR	
11-4-81 N.C.	LA CROSSE - COON VALLEY ROAD	
9-24-86 N.C.	U.S.H. 14 & 61 S.T.H. 35 LA CROSSE CO.	
	SCALE	DATE
	0 50 100 Ft.	7-19-79
	CONSTRUCTION PROJECT NUMBER	
	1641-6-71	4.4

SEC 22, T 15 N, R 7 W



CURVE 3
 ARC = 108.43'
 LC = 108.42'
 LCB = S23°-38'-48"E
 R = 2181.25'
 D = 2°-37'-36"

CURVE 4
 ARC = 472.39'
 LC = 471.44'
 LCB = S31°-36'-26"E
 R = 2151.23'
 D = 2°-39'-48"

BEARING ORIENTATION AND GRID CONVERSION
 COORDINATES AND RIGHT OF WAY PLAT BEARINGS ARE ORIENTED TO THE WISCONSIN COORDINATE SYSTEM WITH 0 DEGREES, 0 MINUTES, 0 SECONDS BEING GRID NORTH. THE DIFFERENCE BETWEEN PROJECT PLAT BEARINGS REPRESENT PLANE ANGLES IN DEGREES, MINUTES AND SECONDS TO THE NEAREST SECOND. R/W PLAT DISTANCES ARE GROUND LENGTHS UNLESS OTHERWISE NOTED AND MAY BE CONVERTED TO GRID LENGTHS BY MULTIPLYING PLAT DISTANCES BY 0.9999197.

REVISION DATE	R/W PROJECT NUMBER	SHEET NUMBER
12-17-79	1641-06-21	4.5
3-13-80 N.C.	FEDERAL PROJECT NUMBER	
6-5-80	GR 08 (4)	
2-24-81	PLAT OF RIGHT OF WAY REQUIRED FOR	
11-4-81 N.C.	LA CROSSE - COON VALLEY ROAD	
9-24-86	U.S.H. 14 8 61 S.T.H. 35 LA CROSSE CO.	
	SCALE	DATE
	0 50 100 Ft.	7-19-79
	CONSTRUCTION PROJECT NUMBER	
	1641-6-71	4.5

CALVERT ROAD
 PI = 128+48.05
 X = 1,682,105.978
 Y = 641,673.366
 I = 199°-38'-44"
 Δ = 19°-38'-44"
 D = 20°-00'
 T = 49.60'
 L = 98.23'
 R = 286.48'
 E = 4.26'

PI = 130+77.66
 X = 1,682,327.128
 Y = 641,409.793
 I = 170°-43'-30"
 Δ = 9°-16'-30"
 D = 3°-00'
 T = 154.92'
 L = 309.17'
 R = 1909.86'
 E = 6.27'

L.H.E. FOR DRAINAGE
 0.42 AC. (PERM.)

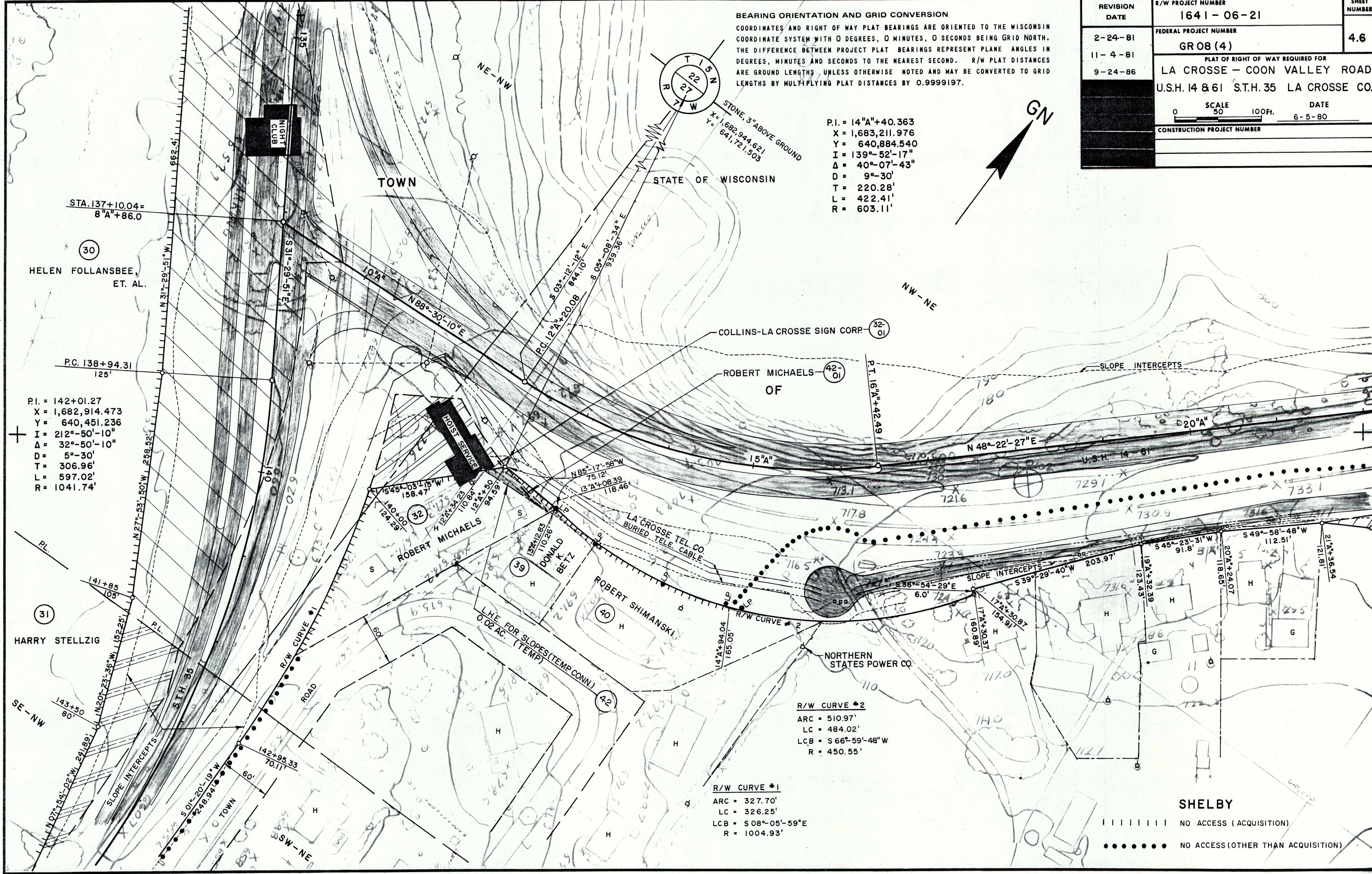
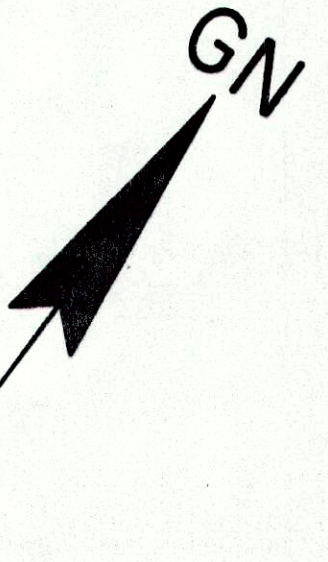
L.H.E. FOR DRAINAGE
 0.11 AC. (PERM.)

||||| NO ACCESS (ACQUISITION)
 NO ACCESS (OTHER THAN ACQUISITION)

REVISION DATE	R/W PROJECT NUMBER	SHEET NUMBER
2-24-81	1641-06-21	4.6
11-4-81	FEDERAL PROJECT NUMBER	
9-24-86	GROB (4)	
	PLAT OF RIGHT OF WAY REQUIRED FOR	
	LA CROSSE - COON VALLEY ROAD	
	U.S.H. 14 & 61 S.T.H. 35 LA CROSSE CO.	
	SCALE	DATE
	0 50 100 FT.	6-5-80
	CONSTRUCTION PROJECT NUMBER	

BEARING ORIENTATION AND GRID CONVERSION
 COORDINATES AND RIGHT OF WAY PLAT BEARINGS ARE ORIENTED TO THE WISCONSIN COORDINATE SYSTEM WITH 0 DEGREES, 0 MINUTES, 0 SECONDS BEING GRID NORTH. THE DIFFERENCE BETWEEN PROJECT PLAT BEARINGS REPRESENT PLANE ANGLES IN DEGREES, MINUTES AND SECONDS TO THE NEAREST SECOND. R/W PLAT DISTANCES ARE GROUND LENGTHS, UNLESS OTHERWISE NOTED AND MAY BE CONVERTED TO GRID LENGTHS BY MULTIPLYING PLAT DISTANCES BY 0.9999197.

P.I. = 14"A" + 40.363
 X = 1,683,211.976
 Y = 640,884.540
 I = 139°-52'-17"
 Δ = 40°-07'-43"
 D = 9°-30'
 T = 220.28'
 L = 422.41'
 R = 603.11'



P.I. = 142+01.27
 X = 1,682,914.473
 Y = 640,451.236
 I = 212°-50'-10"
 Δ = 32°-50'-10"
 D = 5°-30'
 T = 306.96'
 L = 597.02'
 R = 1041.74'

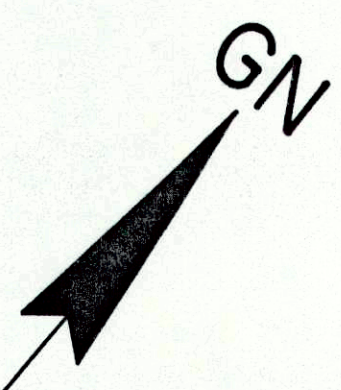
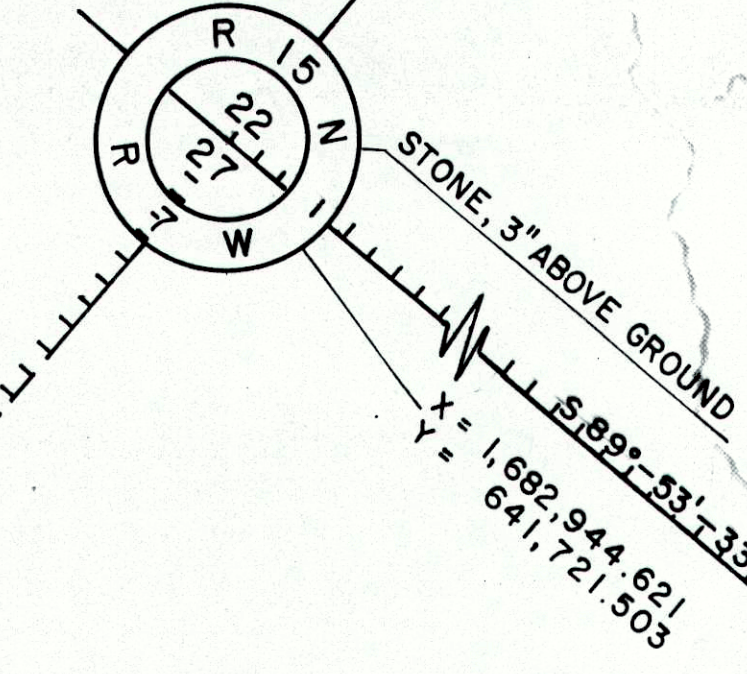
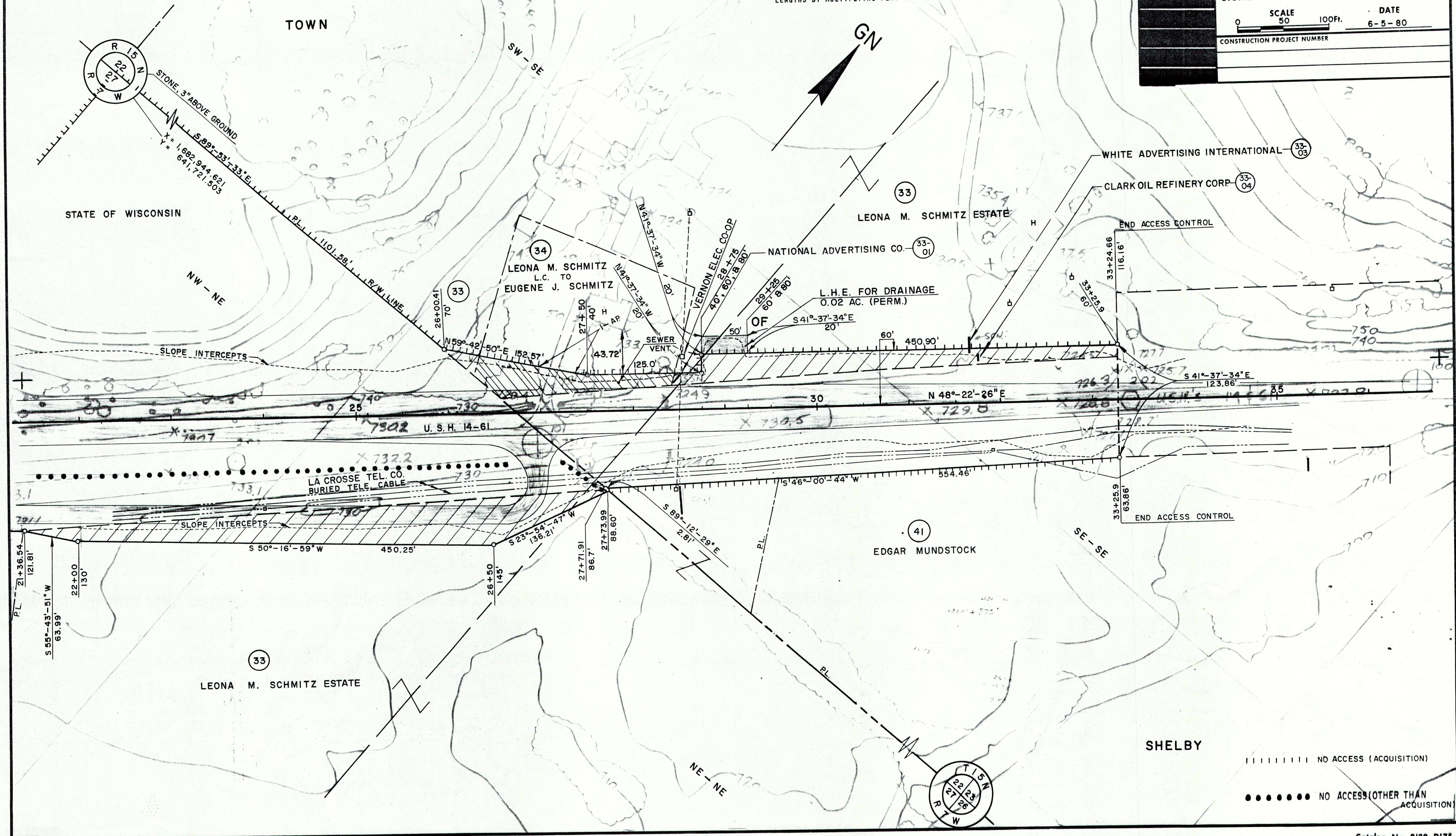
R/W CURVE #2
 ARC = 510.97'
 LC = 484.02'
 LCB = S 66°-59'-48"W
 R = 450.55'

R/W CURVE #1
 ARC = 327.70'
 LC = 326.25'
 LCB = S 08°-05'-59"E
 R = 1004.93'

SHELBY
 ||||| NO ACCESS (ACQUISITION)
 NO ACCESS (OTHER THAN ACQUISITION)

REVISION DATE	R/W PROJECT NUMBER 1641-06-21	SHEET NUMBER 4.7
2-24-81	FEDERAL PROJECT NUMBER GR 08(4)	
11-4-81	PLAT OF RIGHT OF WAY REQUIRED FOR LA CROSSE - COON VALLEY ROAD	
9-24-86	U.S.H. 14-61 S.T.H. 35 LA CROSSE CO.	
	SCALE 0 50 100 FT.	DATE 6-5-80
	CONSTRUCTION PROJECT NUMBER	

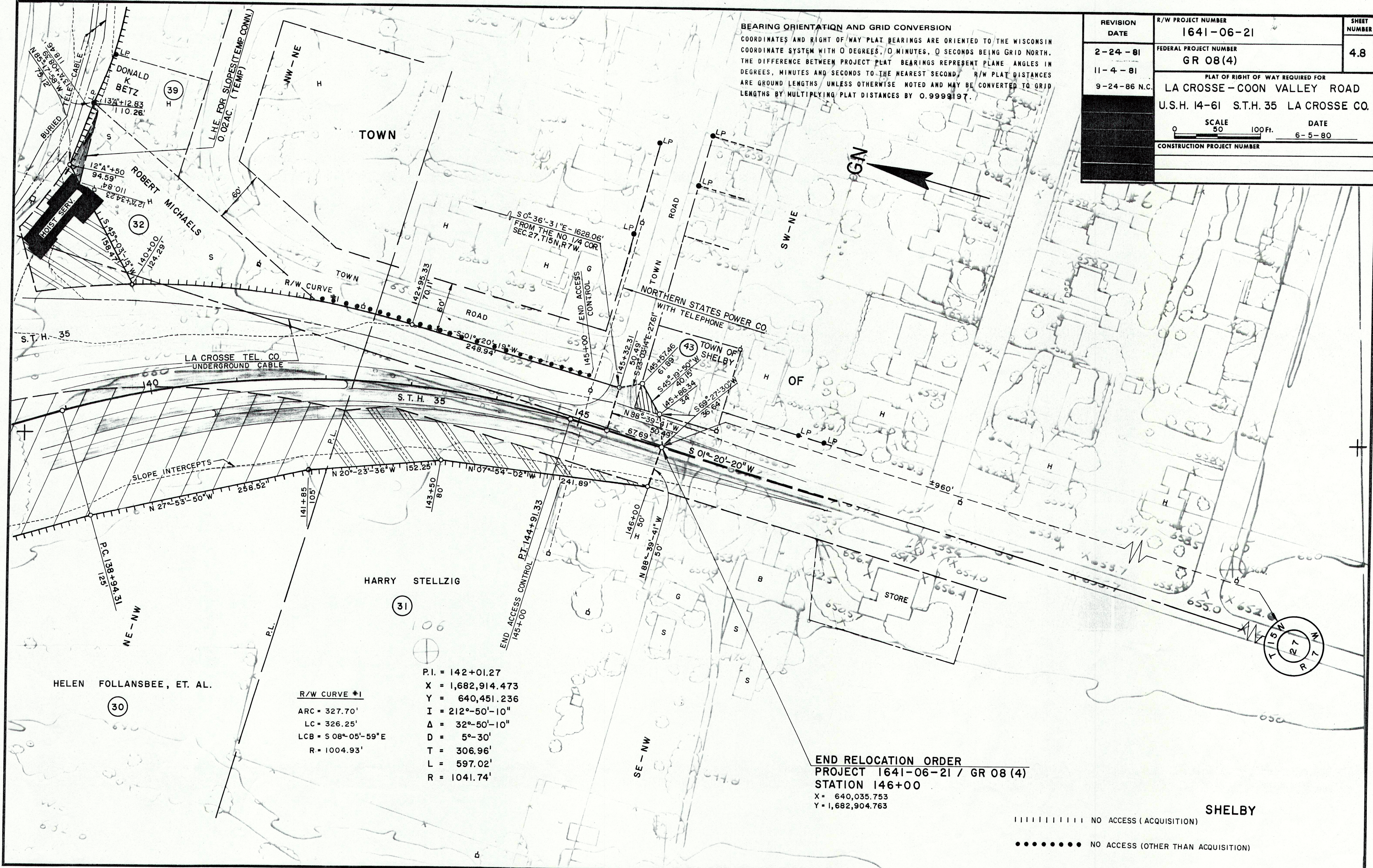
BEARING ORIENTATION AND GRID CONVERSION
 COORDINATES AND RIGHT OF WAY PLAT BEARINGS ARE ORIENTED TO THE WISCONSIN COORDINATE SYSTEM WITH 0 DEGREES, 0 MINUTES, 0 SECONDS BEING GRID NORTH. THE DIFFERENCE BETWEEN PROJECT PLAT BEARINGS REPRESENT PLANE ANGLES IN DEGREES, MINUTES AND SECONDS TO THE NEAREST SECOND. R/W PLAT DISTANCES ARE GROUND LENGTHS UNLESS OTHERWISE NOTED AND MAY BE CONVERTED TO GRID LENGTHS BY MULTIPLYING PLAT DISTANCES BY 0.9999197.



||||| NO ACCESS (ACQUISITION)
 ●●●●● NO ACCESS (OTHER THAN ACQUISITION)

REVISION DATE	R/W PROJECT NUMBER	SHEET NUMBER
2-24-81	1641-06-21	4.8
11-4-81	FEDERAL PROJECT NUMBER	
9-24-86 N.C.	GR 08(4)	
PLAT OF RIGHT OF WAY REQUIRED FOR		
LA CROSSE - COON VALLEY ROAD		
U.S.H. 14-61 S.T.H. 35 LA CROSSE CO.		
SCALE		DATE
0 50 100 Ft.		6-5-80
CONSTRUCTION PROJECT NUMBER		

BEARING ORIENTATION AND GRID CONVERSION
 COORDINATES AND RIGHT OF WAY PLAT BEARINGS ARE ORIENTED TO THE WISCONSIN COORDINATE SYSTEM WITH 0 DEGREES, 0 MINUTES, 0 SECONDS BEING GRID NORTH. THE DIFFERENCE BETWEEN PROJECT PLAT BEARINGS REPRESENT PLANE ANGLES IN DEGREES, MINUTES AND SECONDS TO THE NEAREST SECOND. R/W PLAT DISTANCES ARE GROUND LENGTHS UNLESS OTHERWISE NOTED AND MAY BE CONVERTED TO GRID LENGTHS BY MULTIPLYING PLAT DISTANCES BY 0.9999197.



R/W CURVE #1
 ARC = 327.70'
 LC = 326.25'
 LCB = S 08° 05' - 59" E
 R = 1004.93'

P.I. = 142+01.27
 X = 1,682,914.473
 Y = 640,451.236
 I = 212°-50'-10"
 Δ = 32°-50'-10"
 D = 5°-30'
 T = 306.96'
 L = 597.02'
 R = 1041.74'

END RELOCATION ORDER
 PROJECT 1641-06-21 / GR 08(4)
 STATION 146+00
 X = 640,035.753
 Y = 1,682,904.763

SHELBY
 ■■■■■■■■■ NO ACCESS (ACQUISITION)
 ●●●●●●● NO ACCESS (OTHER THAN ACQUISITION)