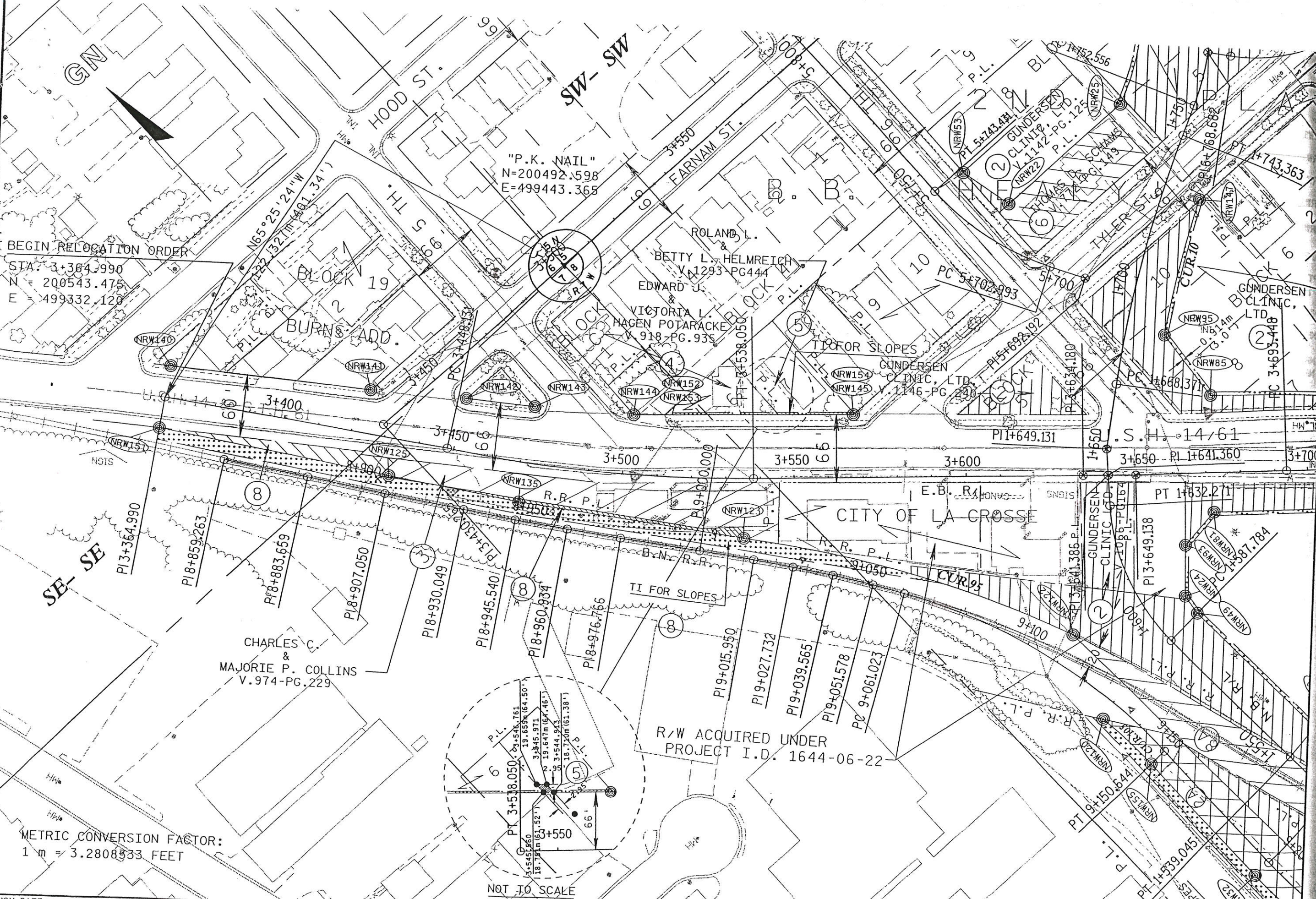


LEVELS ON - 1, 2, 3, 4, 5, 6, 7, 8, 9, 10, 11, 12, 13, 14, 15, 16, 17, 18, 19, 20, 21, 22, 23, 24, 25, 26, 27, 28, 29, 30, 31, 32, 33, 34, 35, 36, 37, 38, 39, 40, 41, 42, 43, 44, 45, 46, 47, 48, 49, 50, 51, 52, 53, 54, 55, 56, 57, 58, 59, 60, 61, 62, 63



BEGIN RELOCATION ORDER
 STA. 3+364.990
 N = 200543.475
 E = 499332.120

"P.K. NAIL"
 N=200492.598
 E=499443.365

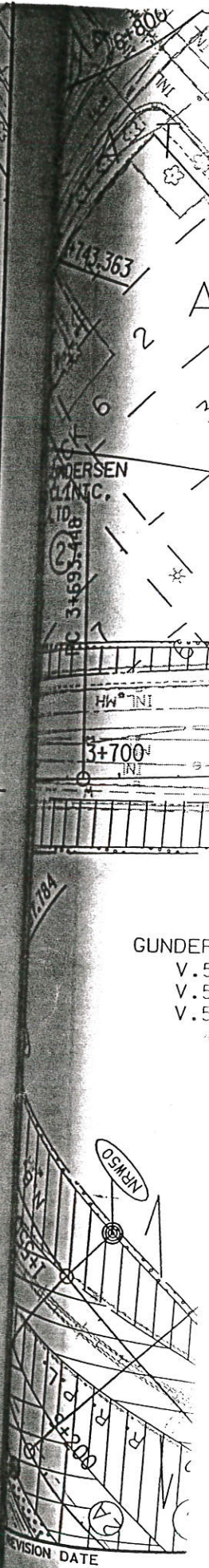
CHARLES C.
 &
 MAJORIE P. COLLINS
 V. 974-PG. 229

R/W ACQUIRED UNDER
 PROJECT I.D. 1644-06-22

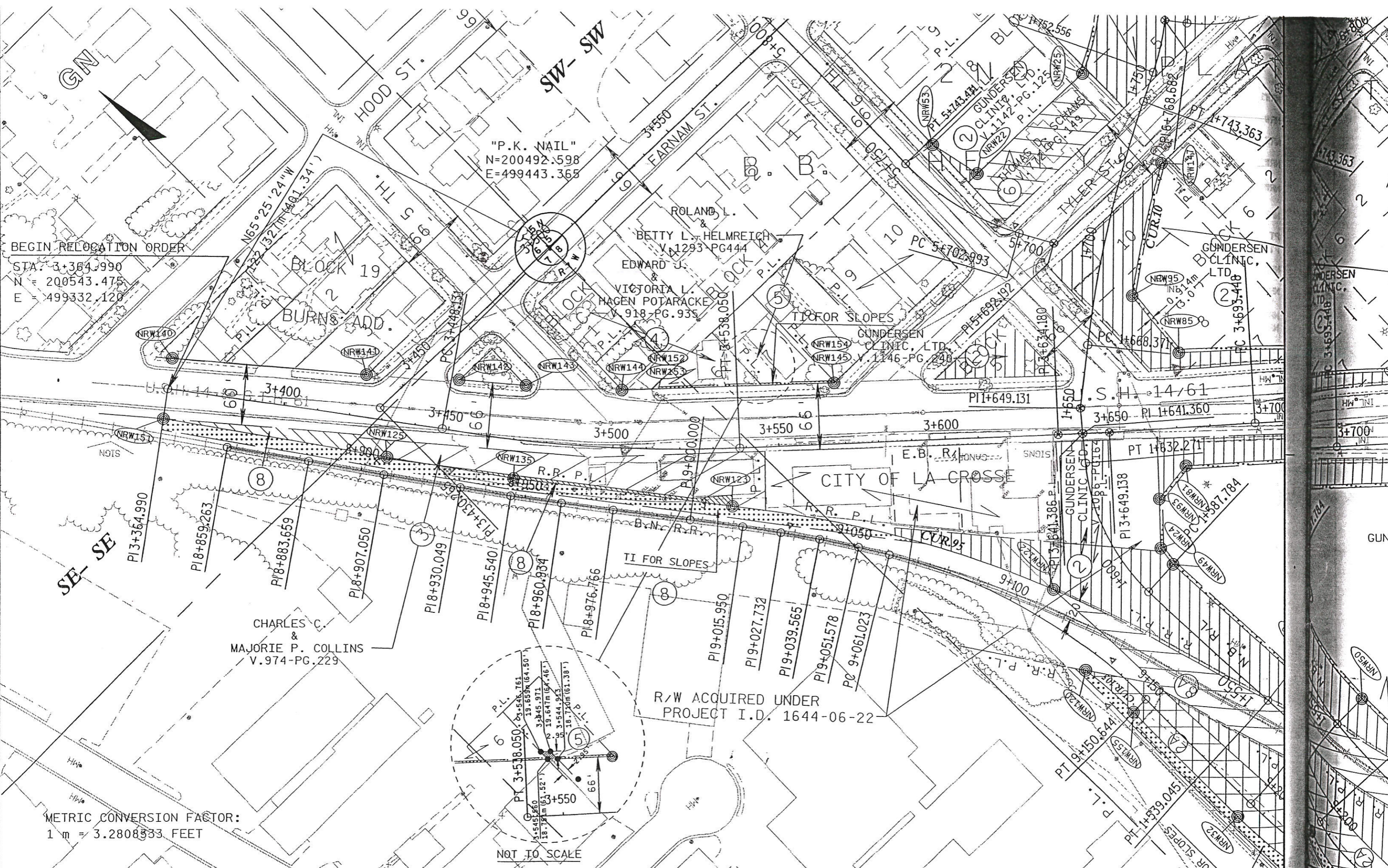
METRIC CONVERSION FACTOR:
 1 m = 3.2808333 FEET

NOT TO SCALE

REVISION DATE	DATE	SCALE, METERS	HWY: U.S.H. 14/61	FEDERAL PROJECT NO:
		0 25m 50m	COUNTY: LA CROSSE	STATE R/W PROJECT NO: 1644-06-21
				1644-06-71, 72 / 4.1e
				SHEET NO: 4.5 M



LEVELS ON - 1.2, 3.4, 5.6, 7.8, 3.10, 11.12, 13, 14, 15, 16, 17, 18, 19, 20, 21, 22, 23, 24, 25, 26, 27, 28, 29, 30, 31, 32, 33, 34, 35, 36, 37, 38, 39, 40, 41, 42, 43, 44, 45, 46, 47, 48, 49, 50, 51, 52, 53, 54, 55, 56, 57, 58, 59, 60, 61, 62, 63



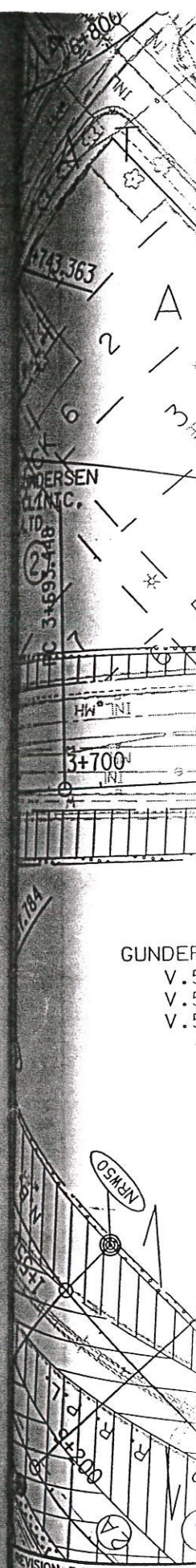
BEGIN RELOCATION ORDER
 STA. 3+364.990
 N = 200543.475
 E = 499332.120

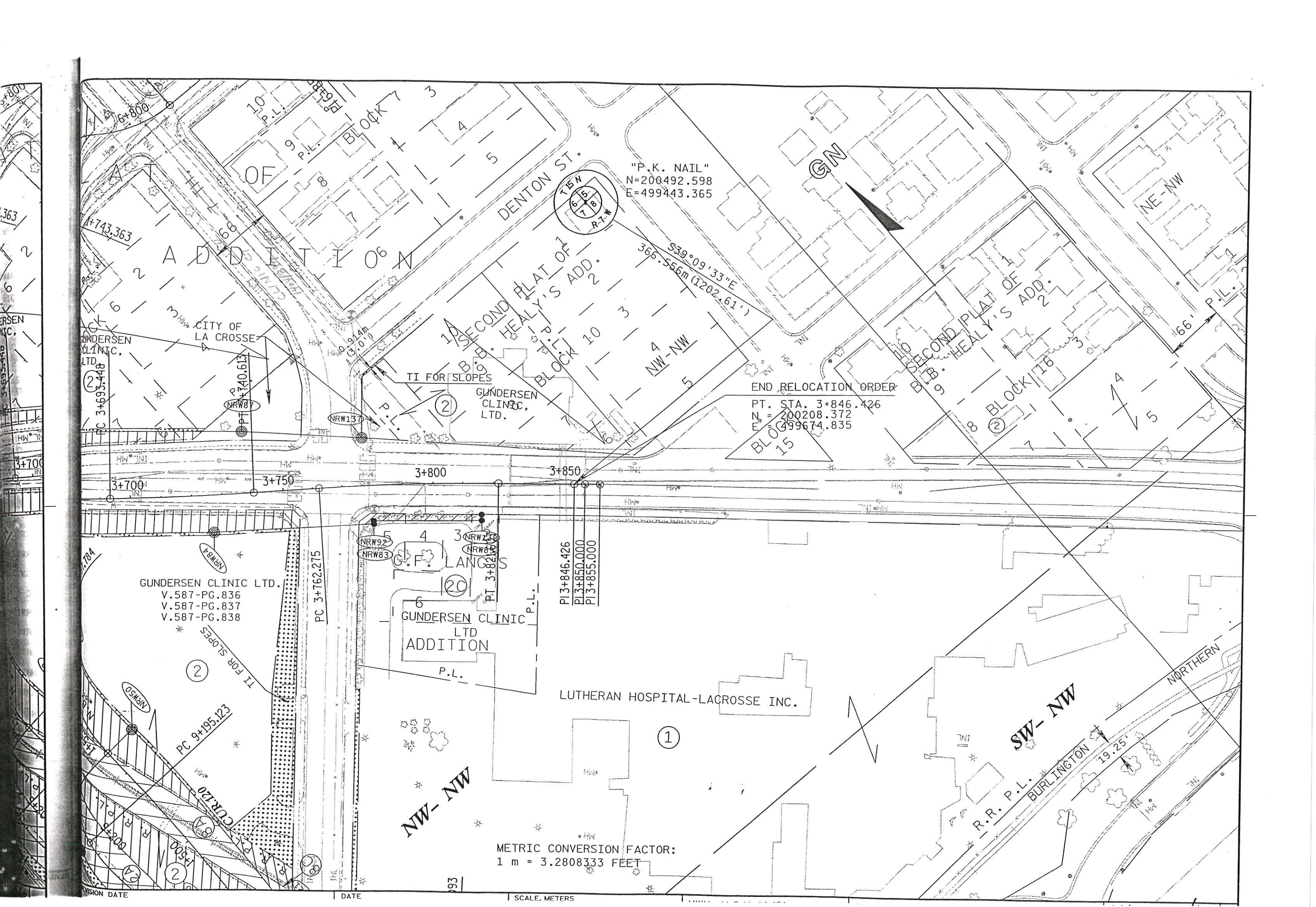
METRIC CONVERSION FACTOR:
 1 m = 3.2808333 FEET

R/W ACQUIRED UNDER
 PROJECT I.D. 1644-06-22

NOT TO SCALE

REVISION DATE	DATE	SCALE, METERS 0 25m 50m	HWY: U.S.H. 14/61	FEDERAL PROJECT NO:	1644-06-71,72/A.10
	GRID FACTOR 0.9999400		COUNTY: LA CROSSE	STATE R/W PROJECT NO: 1644-06-21	SHEET NO: 4.5 M





"P.K. NAIL"
 N=200492.598
 E=499443.365

END RELOCATION ORDER
 PT. STA. 3+846.426
 N = 200208.372
 E = 499674.835

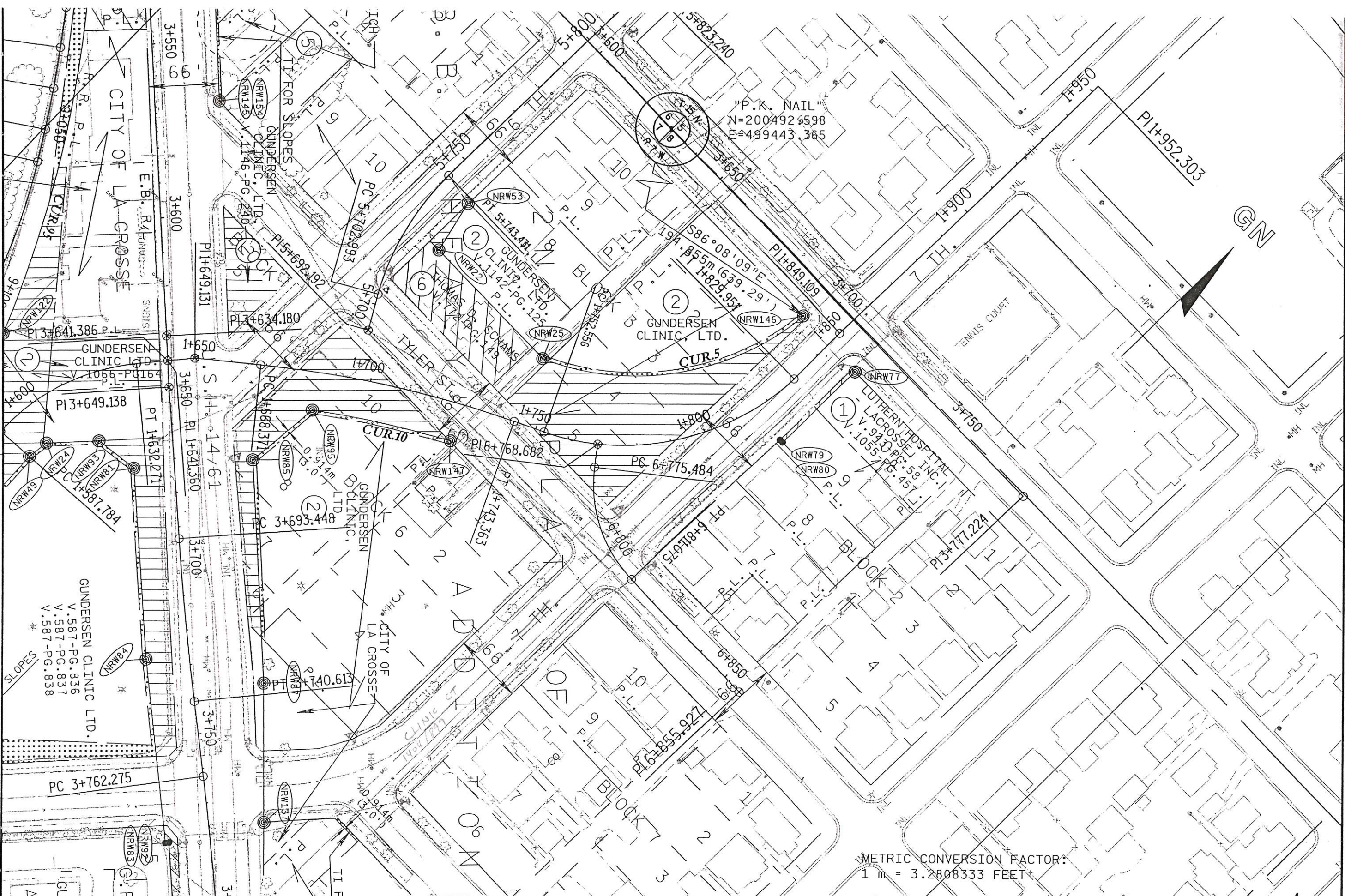
GUNDERSEN CLINIC LTD.
 V.587-PG.836
 V.587-PG.837
 V.587-PG.838

GUNDERSEN CLINIC LTD
 ADDITION
 P.L.

LUTHERAN HOSPITAL-LACROSSE INC.

METRIC CONVERSION FACTOR:
 1 m = 3.2808333 FEET

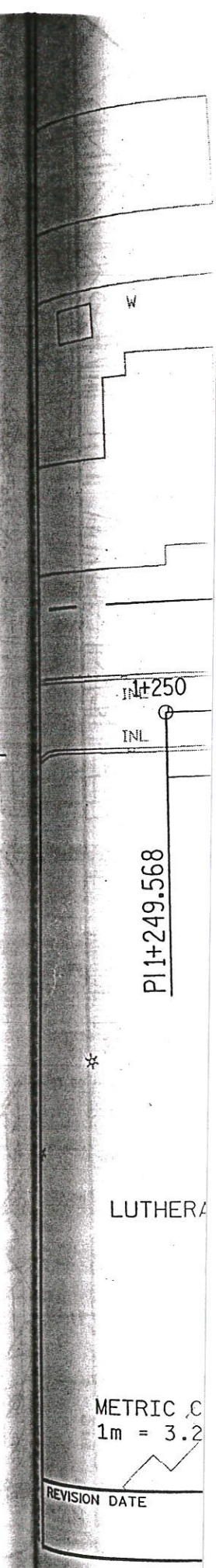
LEVELS ON 1, 2, 3, 4, 5, 7, 8, 9, 10, 11, 12, 13, 14, 15, 16, 17, 18, 19, 20, 21, 22, 23, 24, 25, 26, 27, 28, 29, 30, 31, 32, 33, 34, 35, 36, 37, 38, 39, 40, 41, 42, 43, 44, 45, 46, 47, 48, 49, 50, 51, 52, 53, 54, 55, 56, 57, 58, 59, 60, 61, 62, 63



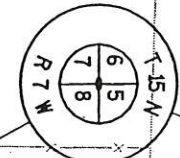
"P.K. NAIL"
 N=200492.4598
 E=499443.365

METRIC CONVERSION FACTOR:
 1 m = 3.2808333 FEET

REVISION DATE	DATE	SCALE, METERS 0 25m 50m	HWY: U.S.H. 14/61	FEDERAL PROJECT NO:	1644-06-71, 72 / 4.8
	GRID FACTOR 0.9999400		COUNTY: LA CROSSE	STATE R/W PROJECT NO: 1644-06-21	SHEET NO: 4.7 M



"P.K. NAIL"
N=200492.598
E=499443.365



S03°48'49"E
454.717 (1491.85')

NE-NE
GOV'T. LOT 1

SUB-STATION

SIGN

GN

100'
R/W

I+250

I+300

PC I+307.317

PT I+331.210

I+350

PC I+356.027

I+400

PT I+423.020

PC I+447.356

P.L.

0.987 AC.
SEVERED

TI FOR SLOPES

PT I+539.045

P.L.

PT I+550.644

PI I+249.568

MN-NW

①

LUTHERAN HOSPITAL-LACROSSE INC.

PI 9+385.725

TI FOR SLOPES

NRW136

NRW129

NRW134

NRW135

TI FOR SLOPES
SEVERED
244 S.F.

NRW123

NRW121

NRW150

NRW155

NRW156

NRW157

NRW158

NRW159

NRW160

NRW161

NRW162

NRW127

NRW128

NRW132

NRW133

NRW134

NRW135

NRW136

NRW137

NRW138

NRW139

NRW140

NRW141

NRW142

NRW143

NRW144

NRW145

NRW146

NRW147

PC 9+195.123

②

TI FOR SLOPES

GUNDERSEN CLINIC LTD.
V.587-PG.836
V.587-PG.837
V.587-PG.838

NRW84

NRW50

NRW49

NRW24

NRW93

NRW81

NRW155

NRW120

NRW121

NRW122

PI 3+649

METRIC CONVERSION FACTOR:
1m = 3.2808333 FEET

REVISION

DATE

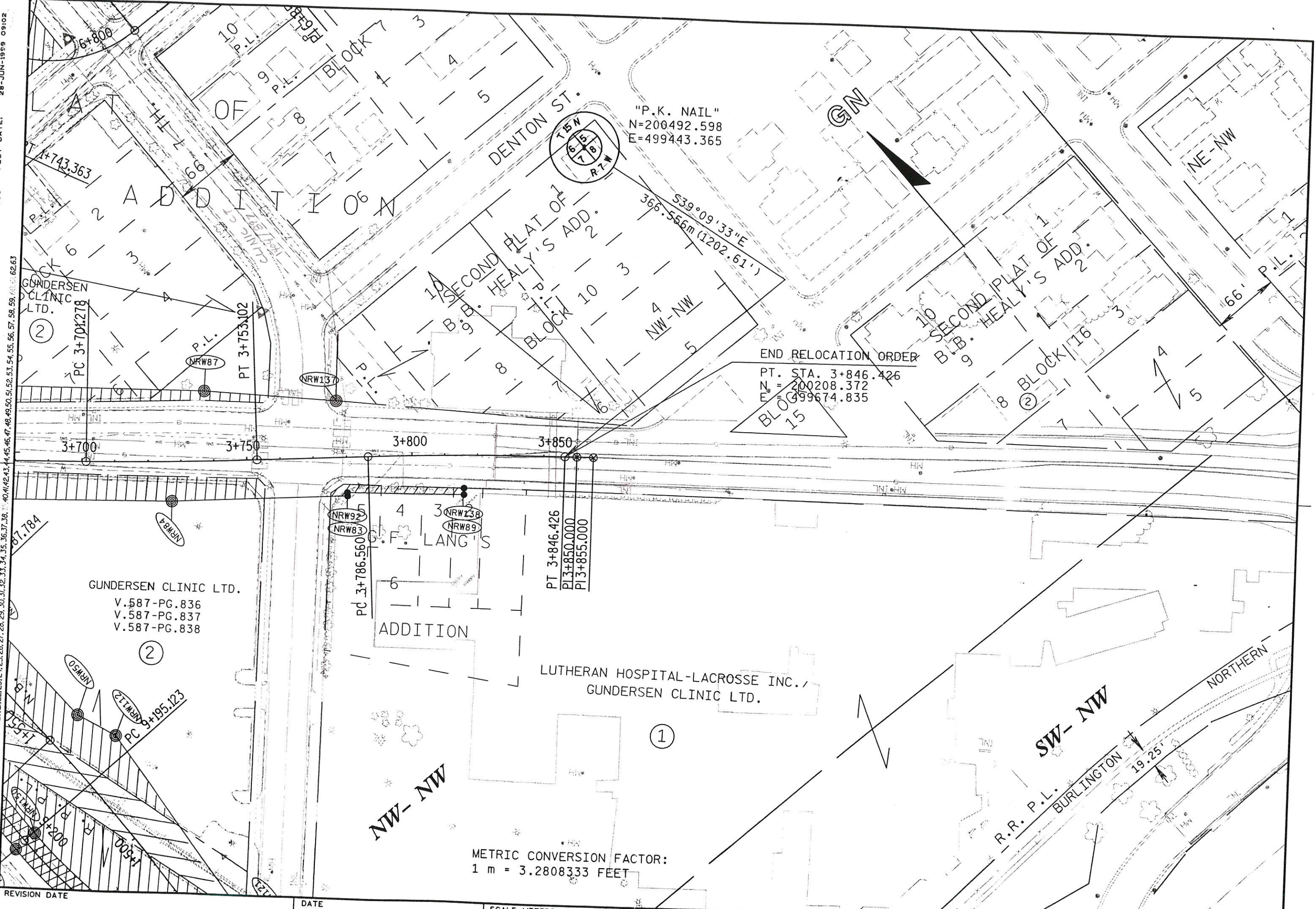
SCALE METERS

LS ON - 1, 2, 3, 4, 5, 6, 7, 8, 9, 10, 11, 12, 13, 14, 15, 16, 17, 18, 19, 20, 21, 22, 23, 24, 25, 26, 27, 28, 29, 30, 31, 32, 33, 34, 35, 36, 37, 38, 39, 40, 41, 42, 43, 44, 45, 46, 47, 48, 49, 50, 51, 52, 53, 54, 55, 56, 57, 58, 59, 60, 61, 62, 63

ORIGINATOR:

NAME:

REV. DATE: 06-28-99 PLOT SCALE: 1:1006.8374041:1000000 PLOT DATE: 28-JUN-1999 09:02



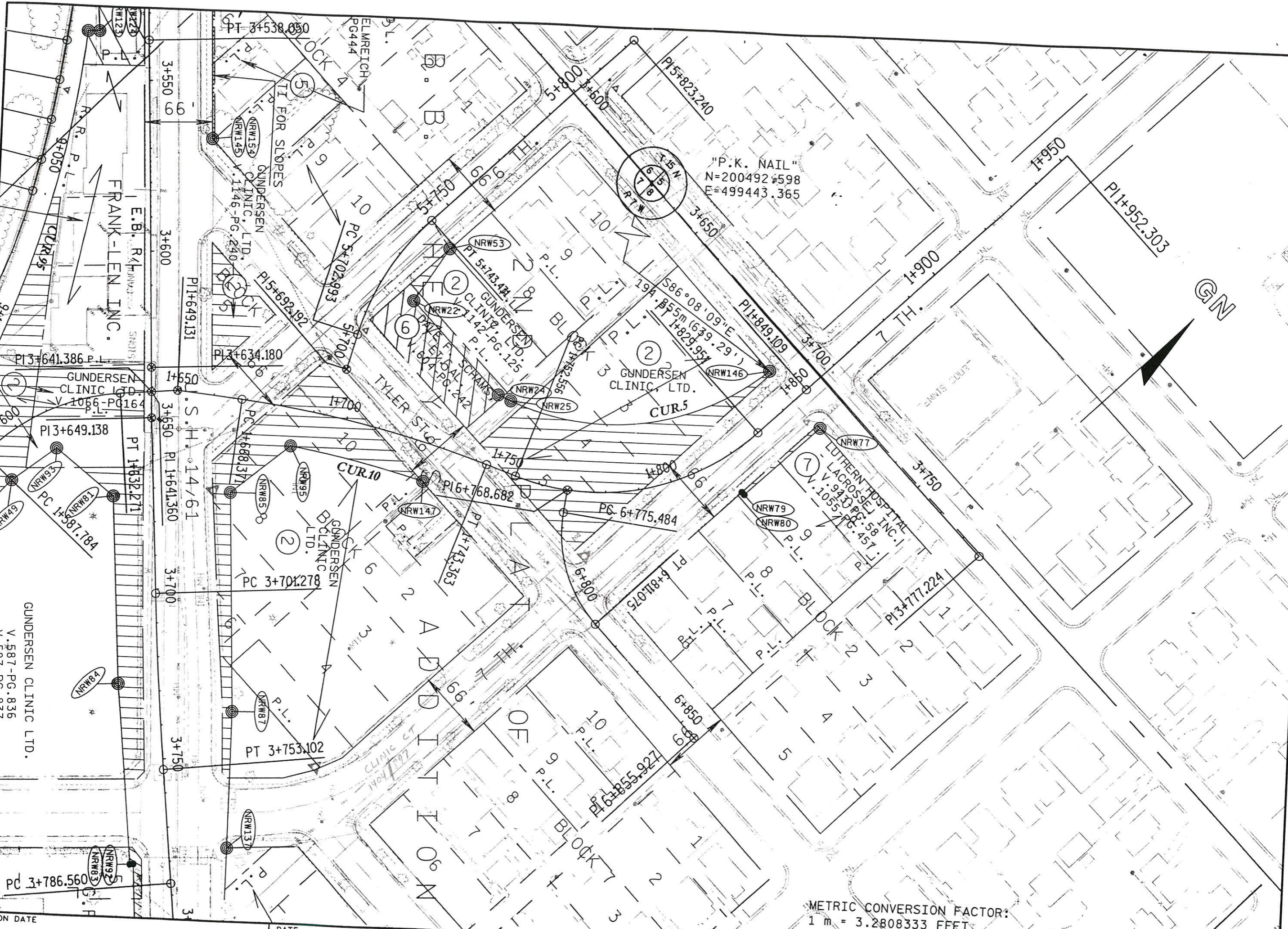
"P.K. NAIL"
N=200492.598
E=499443.365

END RELOCATION ORDER
PT. STA. 3+846.426
N = 200208.372
E = 499674.835

GUNDERSEN CLINIC LTD.
V.587-PG.836
V.587-PG.837
V.587-PG.838

LUTHERAN HOSPITAL-LACROSSE INC./
GUNDERSEN CLINIC LTD.

METRIC CONVERSION FACTOR:
1 m = 3.2808333 FEET



"P.K. NAIL"
 N=200492.598
 E=499443.365

METRIC CONVERSION FACTOR:
 1 m = 3.2808333 FEET

E NAME:

REVISION DATE

DATE

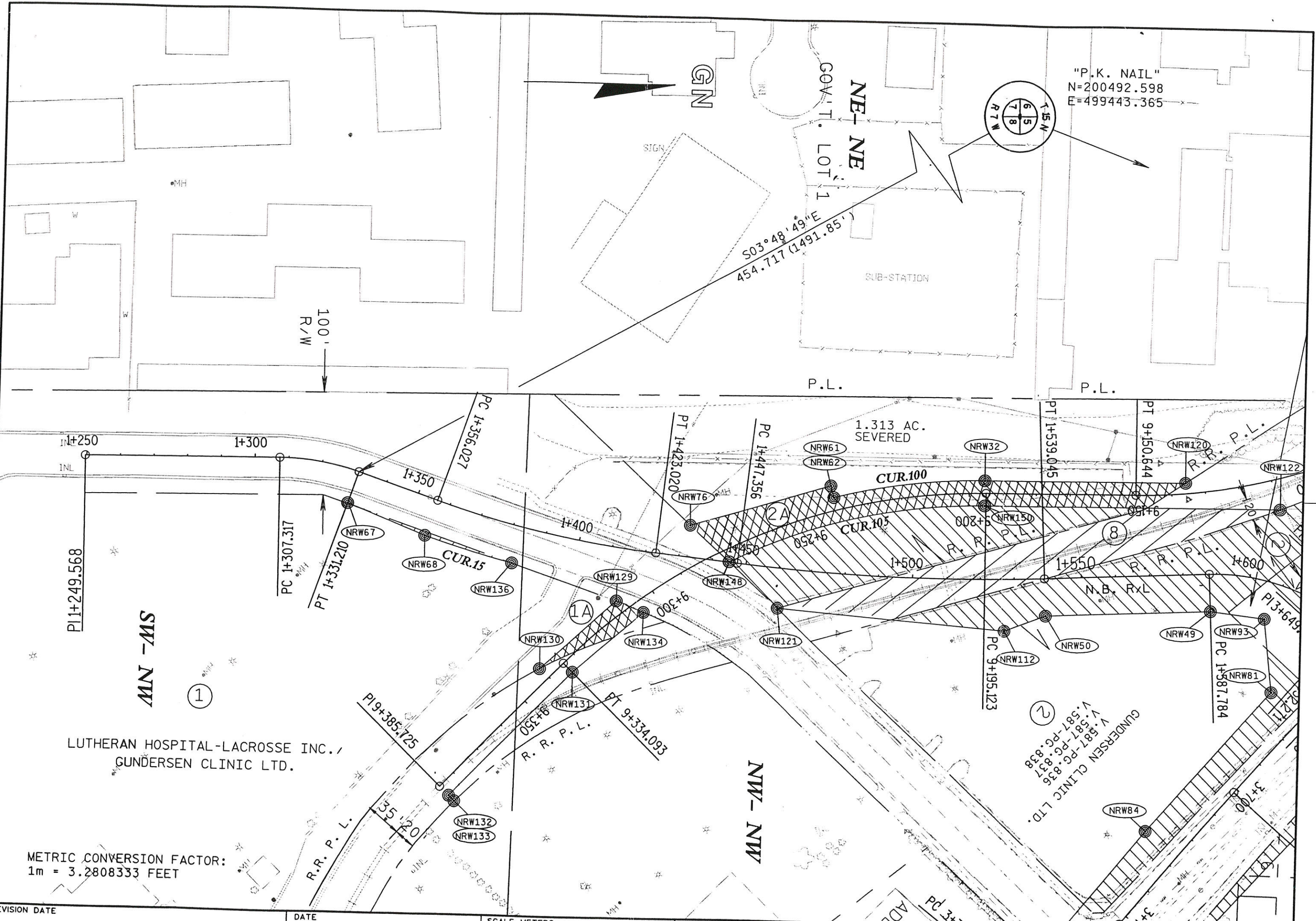
SCALE, METERS

0 25m 50m

HWY: U.S.H. 14/61

FEDERAL PROJECT NO:

ELS ON - 1, 2, 3, 4, 5, 6, 7, 8, 9, 10, 11, 12, 13, 14, 15, 16, 17, 18, 19, 20, 21, 22, 23, 24, 25, 26, 27, 28, 29, 30, 31, 32, 33, 34, 35, 36, 37, 38, 39, 40, 41, 42, 43, 44, 45, 46, 47, 48, 49, 50, 51, 52, 53, 54, 55, 56, 57, 58, 59, 60, 61, 62, 63
 REV. DATE: 06-28-99 PLOT SCALE: 1006.8365441:000000 PLOT DATE: 28-JUN-1999 08:55
 ORIGINATOR:



METRIC CONVERSION FACTOR:
 1m = 3.2808333 FEET

LUTHERAN HOSPITAL-LACROSSE INC.,
 GUNDERSEN CLINIC LTD.

GUNDERSEN CLINIC LTD.
 V. 587 - PG. 836
 V. 587 - PG. 837
 V. 587 - PG. 838

TANGENT TABLE

Table with 3 columns: Station ID, Easting, Northing. Includes entries like NRW140 N 200549.073 E 499339.619 and PC 3+821.607 N 200224.974 E 499656.349.

measured
PA ROW FOR
1-5-11

TANGENT TABLE

Table with 3 columns: Station ID, Easting, Northing. Includes entries like NRW93 N 200309.813 E 499520.480 and NRW153 N 200439.469 E 499436.650.

measured
PA ROW FOR
1-5-11

TANGENT TABLE

Table with 3 columns: Station ID, Easting, Northing. Includes entries like NRW129 N 200114.450 E 499509.834 and NRW146 N 200479.466 E 499637.777.

R/W CURVE DATA

Curve 95

L = 100.415m(329.45')
 R = 330.982m(1085.90')
 C = 100.026m(328.17')
 CB = N 30°57'35" W

Curve 125

L = 58.034m(190.40')
 R = 155.668m(510.73')
 C = 57.700m(189.30')
 CB = N 41°44'00" W

Curve 100

L = 54.469m(178.20')
 R = 180.486m(592.15')
 C = 54.264m(178.03')
 CB = N 09°12'36" W

Curve 5

L = 79.777m(261.74')
 R = 73.850m(242.29')
 C = 75.958m(249.21')
 CB = N 35°20'21" E

Curve 10

L = 40.718m(133.59')
 R = 308.851m(1013.29')
 C = 40.690m(133.50')
 CB = S 57°35'35" W

Curve 15

L = 27.281m(89.50')
 R = 311.149m(1020.83')
 C = 27.272m(89.48')
 CB = S 16°13'00" W

Curve 105

L = 19.079m(62.60')
 R = 169.514m(556.15')
 C = 19.070m(62.57')
 CB = N 04°27'26" W

Curve 110

L = 23.360m(76.64')
 R = 180.486m(592.15')
 C = 23.343m(76.58')
 CB = N 42°20'56" W

Curve 115

L = 28.358m(93.04')
 R = 169.514m(556.15')
 C = 28.327m(92.94')
 CB = S 41°16'18" E

Curve 120

L = 80.866m(265.31')
 R = 611.150m(2005.09')
 C = 80.808m(265.12')
 CB = N 00°58'17" W

Curve Data

DEL = 12°52'47.8" (LT)
 D = 4°21'57.4"
 T = 45.150m(148.13')
 L = 89.919m(295.00')
 R = 400.000m(1312.34')
 DB = S 35°02'55.9" E
 DA = S 47°55'43.7" E
 PISTA = 3+493.281
 PIX = 499407.786
 PIY = 200439.890

Curve Data

DEL = 30°24'21" (RT)
 D = 22°55'06"
 T = 20.707(67.936')
 L = 40.438m(132.67')
 R = 76.200m(250.00')
 DB = N 29°28'41" W
 DA = N 0°55'41" E
 PISTA = 5+723.700
 PIX = 499536.748
 PIY = 200414.726

Curve Data

DEL = 63°20'55" (LT)
 D = 24°56'54"
 T = 43.189m(141.70')
 L = 77.395m(253.92')
 R = 70.000m(229.66')
 DB = N 64°14'45" E
 DA = N 0°53'50" E
 PISTA = 1+795.745
 PIX = 499648.188
 PIY = 200421.461

Curve Data

DEL = 4°14'57.8" (RT)
 D = 2°10'58.7"
 T = 29.680m(97.38')
 L = 59.332m(194.66')
 R = 800.000m(2624.67')
 DB = S 52°19'17.5" E
 DA = S 48°04'19.8" E
 PISTA = 3+791.955
 PIX = 499634.268
 PIY = 200244.806

REFERENCE LINE CURVE DATA

Curve Data

DEL = 50°58'50.8" (LT)
 D = 43°39'33.8"
 T = 19.071m(62.57')
 L = 35.591m(116.77')
 R = 40.000m(131.23')
 DB = S 38°00'04.4" E
 DA = S 88°58'55.3" E
 PISTA = 6+794.554
 PIX = 499638.765
 PIY = 200390.882

Curve Data

DEL = 13°25'38" (RT)
 D = 5°27'27"
 T = 37.669m(123.68')
 L = 74.992m(246.04')
 R = 320.000m(1049.87')
 DB = N 50°49'07" E
 DA = N 64°14'45" E
 PISTA = 1+706.040
 PIX = 499567.082
 PIY = 200382.333

Curve Data

DEL = 31°07'14" (RT)
 D = 10°35'03"
 T = 45.946m(150.74')
 L = 89.621m(294.03')
 R = 165.000m(541.34')
 DB = S 31°40'52" E
 DA = S 0°33'38" E
 PISTA = 9+106.968
 PIX = 499474.862
 PIY = 200315.805

Curve Data

DEL = 12°47'41.1" (LT)
 D = 5°49'16.5"
 T = 33.636m(110.35')
 L = 66.993m(219.79')
 R = 300.000m(984.25')
 DB = N 18°43'52.6" E
 DA = N 5°56'11.5" E
 PISTA = 1+389.664
 PIX = 499492.380
 PIY = 200094.246

Curve Data

DEL = 19°16'51" (RT)
 D = 24°35'49"
 T = 12.060m(39.57')
 L = 23.893m(78.39')
 R = 71.000m(232.94')
 DB = N 0°32'59" W
 DA = N 18°43'53" E
 PISTA = 1+319.377
 PIX = 499469.735
 PIY = 200027.466

Curve Data

DEL = 3°22'40.5" (LT)
 D = 2°10'58.7"
 T = 23.589m(77.39')
 L = 47.165m(154.74')
 R = 800.000m(2624.67')
 DB = S 48°56'37.0" E
 DA = S 52°19'17.5" E
 PISTA = 3+717.037
 PIX = 499574.964
 PIY = 200290.606

Curve Data

DEL = 45°29'58.5" (LT)
 D = 9°58'45.4"
 T = 73.383m(240.68')
 L = 138.971m(455.94')
 R = 175.000m(574.15')
 DB = S 0°33'37.7" E
 DA = S 46°03'36.2" E
 PISTA = 9+268.505
 PIX = 499476.465
 PIY = 200152.005

Curve Data

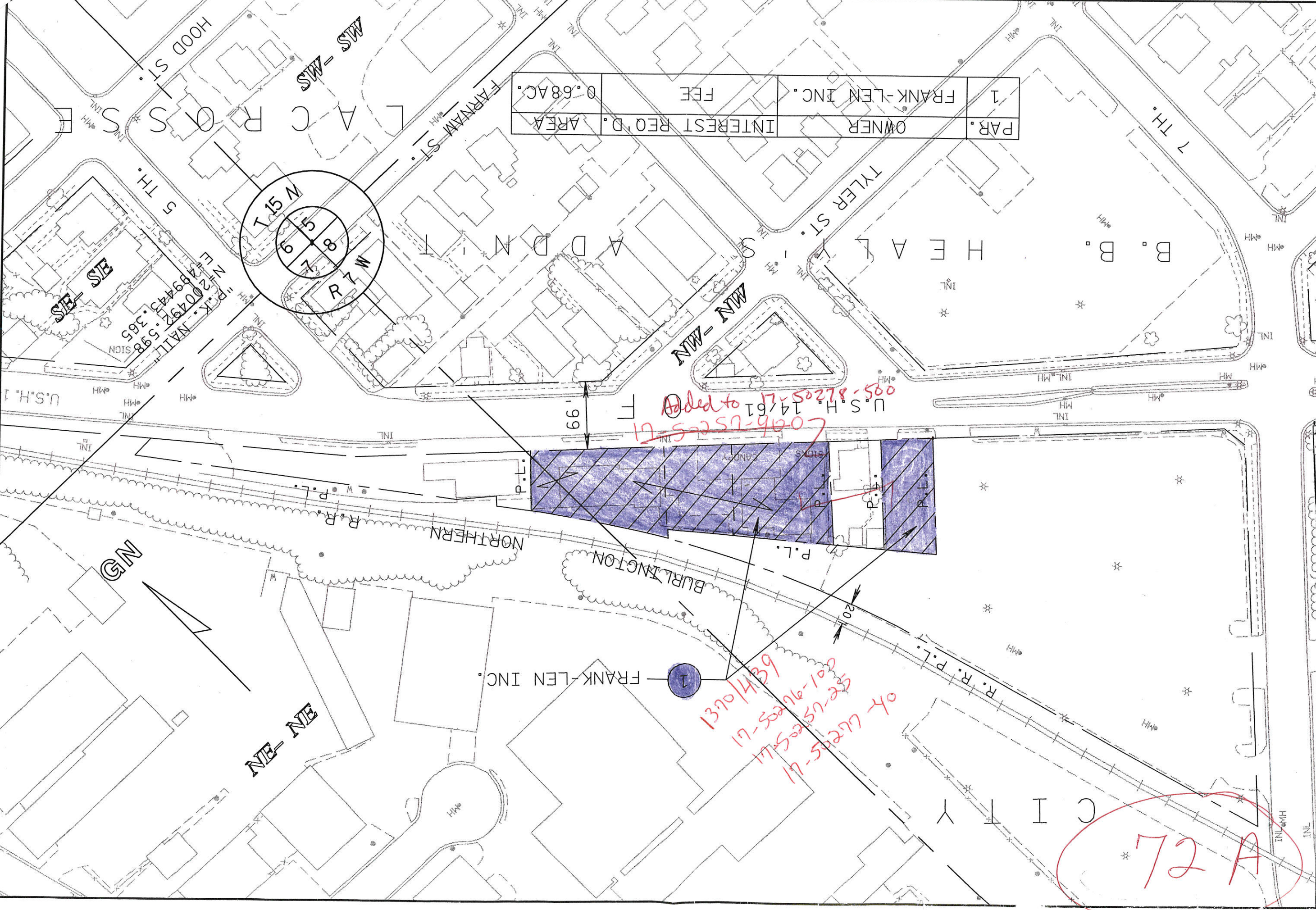
DEL = 42°28'55.1" (RT)
 D = 29°06'22.5"
 T = 23.322m(76.52')
 L = 44.487m(145.95')
 R = 60.000m(196.85')
 DB = N 2°49'09.1" W
 DA = N 39°39'46.0" E
 PISTA = 1+611.106
 PIX = 499497.323
 PIY = 200315.447

Curve Data

DEL = 8°45'20.5" (LT)
 D = 2°54'38.3"
 T = 45.934m(150.70')
 L = 91.690m(300.82')
 R = 600.000m(1968.50')
 DB = N 5°56'11.5" E
 DA = N 2°49'09.1" W
 PISTA = 1+493.290
 PIX = 499503.126
 PIY = 200197.594

11.12.19.18.17.16.15.14.13.12.11.10.09.08.07.06.05.04.03.02.01.00.99.98.97.96.95.94.93.92.91.90.89.88.87.86.85.84.83.82.81.80.79.78.77.76.75.74.73.72.71.70.69.68.67.66.65.64.63.62.61.60.59.58.57.56.55.54.53.52.51.50.49.48.47.46.45.44.43.42.41.40.39.38.37.36.35.34.33.32.31.30.29.28.27.26.25.24.23.22.21.20.19.18.17.16.15.14.13.12.11.10.09.08.07.06.05.04.03.02.01.00.99.98.97.96.95.94.93.92.91.90.89.88.87.86.85.84.83.82.81.80.79.78.77.76.75.74.73.72.71.70.69.68.67.66.65.64.63.62.61.60.59.58.57.56.55.54.53.52.51.50.49.48.47.46.45.44.43.42.41.40.39.38.37.36.35.34.33.32.31.30.29.28.27.26.25.24.23.22.21.20.19.18.17.16.15.14.13.12.11.10.09.08.07.06.05.04.03.02.01.00.99.98.97.96.95.94.93.92.91.90.89.88.87.86.85.84.83.82.81.80.79.78.77.76.75.74.73.72.71.70.69.68.67.66.65.64.63.62.61.60.59.58.57.56.55.54.53.52.51.50.49.48.47.46.45.44.43.42.41.40.39.38.37.36.35.34.33.32.31.30.29.28.27.26.25.24.23.22.21.20.19.18.17.16.15.14.13.12.11.10.09.08.07.06.05.04.03.02.01.00.99.98.97.96.95.94.93.92.91.90.89.88.87.86.85.84.83.82.81.80.79.78.77.76.75.74.73.72.71.70.69.68.67.66.65.64.63.62.61.60.59.58.57.56.55.54.53.52.51.50.49.48.47.46.45.44.43.42.41.40.39.38.37.36.35.34.33.32.31.30.29.28.27.26.25.24.23.22.21.20.19.18.17.16.15.14.13.12.11.10.09.08.07.06.05.04.03.02.01.00.99.98.97.96.95.94.93.92.91.90.89.88.87.86.85.84.83.82.81.80.79.78.77.76.75.74.73.72.71.70.69.68.67.66.65.64.63.62.61.60.59.58.57.56.55.54.53.52.51.50.49.48.47.46.45.44.43.42.41.40.39.38.37.36.35.34.33.32.31.30.29.28.27.26.25.24.23.22.21.20.19.18.17.16.15.14.13.12.11.10.09.08.07.06.05.04.03.02.01.00.99.98.97.96.95.94.93.92.91.90.89.88.87.86.85.84.83.82.81.80.79.78.77.76.75.74.73.72.71.70.69.68.67.66.65.64.63.62.61.60.59.58.57.56.55.54.53.52.51.50.49.48.47.46.45.44.43.42.41.40.39.38.37.36.35.34.33.32.31.30.29.28.27.26.25.24.23.22.21.20.19.18.17.16.15.14.13.12.11.10.09.08.07.06.05.04.03.02.01.00.99.98.97.96.95.94.93.92.91.90.89.88.87.86.85.84.83.82.81.80.79.78.77.76.75.74.73.72.71.70.69.68.67.66.65.64.63.62.61.60.59.58.57.56.55.54.53.52.51.50.49.48.47.46.45.44.43.42.41.40.39.38.37.36.35.34.33.32.31.30.29.28.27.26.25.24.23.22.21.20.19.18.17.16.15.14.13.12.11.10.09.08.07.06.05.04.03.02.01.00.99.98.97.96.95.94.93.92.91.90.89.88.87.86.85.84.83.82.81.80.79.78.77.76.75.74.73.72.71.70.69.68.67.66.65.64.63.62.61.60.59.58.57.56.55.54.53.52.51.50.49.48.47.46.45.44.43.42.41.40.39.38.37.36.35.34.33.32.31.30.29.28.27.26.25.24.23.22.21.20.19.18.17.16.15.14.13.12.11.10.09.08.07.06.05.04.03.02.01.00.99.98.97.96.95.94.93.92.91.90.89.88.87.86.85.84.83.82.81.80.79.78.77.76.75.74.73.72.71.70.69.68.67.66.65.64.63.62.61.60.59.58.57.56.55.54.53.52.51.50.49.48.47.46.45.44.43.42.41.40.39.38.37.36.35.34.33.32.31.30.29.28.27.26.25.24.23.22.21.20.19.18.17.16.15.14.13.12.11.10.09.08.07.06.05.04.03.02.01.00.99.98.97.96.95.94.93.92.91.90.89.88.87.86.85.84.83.82.81.80.79.78.77.76.75.74.73.72.71.70.69.68.67.66.65.64.63.62.61.60.59.58.57.56.55.54.53.52.51.50.49.48.47.46.45.44.43.42.41.40.39.38.37.36.35.34.33.32.31.30.29.28.27.26.25.24.23.22.21.20.19.18.17.16.15.14.13.12.11.10.09.08.07.06.05.04.03.02.01.00.99.98.97.96.95.94.93.92.91.90.89.88.87.86.85.84.83.82.81.80.79.78.77.76.75.74.73.72.71.70.69.68.67.66.65.64.63.62.61.60.59.58.57.56.55.54.53.52.51.50.49.48.47.46.45.44.43.42.41.40.39.38.37.36.35.34.33.32.31.30.29.28.27.26.25.24.23.22.21.20.19.18.17.16.15.14.13.12.11.10.09.08.07.06.05.04.03.02.01.00.99.98.97.96.95.94.93.92.91.90.89.88.87.86.85.84.83.82.81.80.79.78.77.76.75.74.73.72.71.70.69.68.67.66.65.64.63.62.61.60.59.58.57.56.55.54.53.52.51.50.49.48.47.46.45.44.43.42.41.40.39.38.37.36.35.34.33.32.31.30.29.28.27.26.25.24.23.22.21.20.19.18.17.16.15.14.13.12.11.10.09.08.07.06.05.04.03.02.01.00.99.98.97.96.95.94.93.92.91.90.89.88.87.86.85.84.83.82.81.80.79.78.77.76.75.74.73.72.71.70.69.68.67.66.65.64.63.62.61.60.59.58.57.56.55.54.53.52.51.50.49.48.47.46.45.44.43.42.41.40.39.38.37.36.35.34.33.32.31.30.29.28.27.26.25.24.23.22.21.20.19.18.17.16.15.14.13.12.11.10.09.08.07.06.05.04.03.02.01.00.99.98.97.96.95.94.93.92.91.90.89.88.87.86.85.84.83.82.81.80.79.78.77.76.75.74.73.72.71.70.69.68.67.66.65.64.63.62.61.60.59.58.57.56.55.54.53.52.51.50.49.48.47.46.45.44.43.42.41.40.39.38.37.36.35.34.33.32.31.30.29.28.27.26.25.24.23.22.21.20.19.18.17.16.15.14.13.12.11.10.09.08.07.06.05.04.03.02.01.00.99.98.97.96.95.94.93.92.91.90.89.88.87.86.85.84.83.82.81.80.79.78.77.76.75.74.73.72.71.70.69.68.67.66.65.64.63.62.61.60.59.58.57.56.55.54.53.52.51.50.49.48.47.46.45.44.43.42.41.40.39.38.37.36.35.34.33.32.31.30.29.28.27.26.25.24.23.22.21.20.19.18.17.16.15.14.13.12.11.10.09.08.07.06.05.04.03.02.01.00.99.98.97.96.95.94.93.92.91.90.89.88.87.86.85.84.83.82.81.80.79.78.77.76.75.74.73.72.71.70.69.68.67.66.65.64.63.62.61.60.59.58.57.56.55.54.53.52.51.50.49.48.47.46.45.44.43.42.41.40.39.38.37.36.35.34.33.32.31.30.29.28.27.26.25.24.23.22.21.20.19.18.17.16.15.14.13.12.11.10.09.08.07.06.05.04.03.02.01.00.99.98.97.96.95.94.93.92.91.90.89.88.87.86.85.84.83.82.81.80.79.78.77.76.75.74.73.72.71.70.69.68.67.66.65.64.63.62.61.60.59.58.57.56.55.54.53.52.51.50.49.48.47.46.45.44.43.42.41.40.39.38.37.36.35.34.33.32.31.30.29.28.27.26.25.24.23.22.21.20.19.18.17.16.15.14.13.12.11.10.09.08.07.06.05.04.03.02.01.00.99.98.97.96.95.94.93.92.91.90.89.88.87.86.85.84.83.82.81.80.79.78.77.76.75.74.73.72.71.70.69.68.67.66.65.64.63.62.61.60.59.58.57.56.55.54.53.52.51.50.49.48.47.46.45.44.43.42.41.40.39.38.37.36.35.34.33.32.31.30.29.28.27.26.25.24.23.22.21.20.19.18.17.16.15.14.13.12.11.10.09.08.07.06.05.04.03.02.01.00.99.98.97.96.95.94.93.92.91.90.89.88.87.86.85.84.83.82.81.80.79.78.77.76.75.74.73.72.71.70.69.68.67.66.65.64.63.62.61.60.59.58.57.56.55.54.53.52.51.50.49.48.47.46.45.44.43.42.41.40.39.38.37.36.35.34.33.32.31.30.29.28.27.26.25.24.23.22.21.20.19.18.17.16.15.14.13.12.11.10.09.08.07.06.05.04.03.02.01.00.99.98.97.96.95.94.93.92.91.90.89.88.87.86.85.84.83.82.81.80.79.78.77.76.75.74.73.72.71.70.69.68.67.66.65.64.63.62.61.60.59.58.57.56.55.54.53.52.51.50.49.48.47.46.45.44.43.42.41.40.39.38.37.36.35.34.33.32.31.30.29.28.27.26.25.24.23.22.21.20.19.18.17.16.15.14.13.12.11.10.09.08.07.06.05.04.03.02.01.00.99.98.97.96.95.94.93.92.91.90.89.88.87.86.85.84.83.82.81.80.79.78.77.76.75.74.73.72.71.70.69.68.67.66.65.64.63.62.61.60.59.58.57.56.55.54.53.52.51.50.49.48.47.46.45.44.43.42.41.40.39.38.37.36.35.34.33.32.31.30.29.28.27.26.25.24.23.22.21.20.19.18.17.16.15.14.13.12.11.10.09.08.07.06.05.04.03.02.01.00.99.98.97.96.95.94.93.92.91.90.89.88.87.86.85.84.83.82.81.80.79.78.77.76.75.74.73.72.71.70.69.68.67.66.65.64.63.62.61.60.59.58.57.56.55.54.53.52.51.50.49.48.47.46.45.44.43.42.41.40.39.38.37.36.35.34.33.32.31.30.29.28.27.26.25.24.23.22.21.20.19.18.17.16.15.14.13.12.11.10.09.08.07.06.05.04.03.02.01.00.99.98.97.96.95.94.93.92.91.90.89.88.87.86.85.84.83.82.81.80.79.78.77.76.75.74.73.72.71.70.69.68.67.66.65.64.63.62.61.60.59.58.57.56.55.54.53.52.51.50.49.48.47.46.45.44.43.42.41.40.39.38.37.36.35.34.33.32.31.30.29.28.27.26.25.24.23.22.21.20.19.18.17.16.15.14.13.12.11.10.09.08.07.06.05.04.03.02.01.00.99.98.97.96.95.94.93.92.91.90.89.88.87.86.85.84.83.82.81.80.79.78.77.76.75.74.73.72.71.70.69.68.67.66.65.64.63.62.61.60.59.58.57.56.5

PAR.	OWNER	INTEREST REQ'D. AREA
1	FRANK-LEN INC.	FEE
		0.68 AC.



*Added to 17-5027-500
 U.S.H. 14/61
 637/10/61*

*OK Lines-11
 601-955-1111
 6/37/10/61*

72 A

R/W CURVE DATA

CUR18
 ARC= 54.703 m (179.47')
 LC= 54.371 m (178.38') LCB= N 20°27'39" E
 R= 143.256 m (470')

CUR19
 ARC= 26.255 m (86.14')
 LC= 24.571 m (80.61') LCB= N 51°05'50" W
 R= 20.950 m (68.73')

CUR20
 ARC= 12.580 m (41.27')
 LC= 12.579 m (41.27') LCB= S 82°18'05" W
 R= 335.559 m (1100.92')

CUR21
 ARC= 24.445 m (80.20')
 LC= 24.440 m (80.18') LCB= N 87°08'28" E
 R= 360.858 m (1183.92')

NC138
 ARC= 11.090 m (36.38')
 LC= 10.119 m (33.20') LCB= S 43°06'33" W
 R= 7.550 m (24.77')

NC140
 ARC= 11.878 m (38.97')
 LC= 10.691 m (35.08') LCB= S 44°02'28" E
 R= 7.550 m (24.77')

NC176
 ARC= 19.608 m (64.33')
 LC= 18.033 m (59.16') LCB= S 40°51'43" W
 R= 13.950 m (45.77')

SC180
 ARC= 8.601 m (28.22')
 LC= 8.061 m (26.45') LCB= N 36°31'43" E
 R= 6.940 m (22.77')

SSW18
 ARC= 25.435 m (83.45')
 LC= 25.418 m (83.39') LCB= N 3°07'37" W
 R= 199.350 m (654.04')

SSW19
 ARC= 40.000 m (131.23')
 LC= 39.972 m (131.14') LCB= N 3°05'36" W
 R= 310.650 m (1019.19')

SSW20
 ARC= 5.824 m (19.11')
 LC= 5.358 m (17.58') LCB= N 39°36'36" W
 R= 4.150 m (13.61')

CLINTON STREET CURVE DATA

PI STA. 3+804.681
 PI Y 205328.757 X 499611.796
 PC STA. 3+775.137
 PT STA. 3+834.085
 TAN 29.544 m (96.93')
 Radius 350.000 m (1148.29')
 DEG 4°59'23"
 DELTA 9°39'00"
 LENGTH 58.948 m (193.40')

NORTHBOUND REFERENCE LINE CURVE DATA (ROSE ST.)

PI STA. 3+729.700
 PI Y 205206.207 X 499653.947
 PC STA. 3+709.674
 PT STA. 3+749.715
 TAN 20.026 m (65.70')
 Radius 700.000 m (2296.59')
 DEG 2°29'41"
 DELTA 3°16'39"
 LENGTH 40.042 m (131.37')

PI STA. 4+360.314
 PI Y 205836.429 X 499664.804
 PC STA. 4+345.977
 PT STA. 4+374.630
 TAN 14.337 m (47.04')
 Radius 300.000 m (984.25')
 DEG 5°49'17"
 DELTA 5°28'20"
 LENGTH 28.652 m (94.00')

PI STA. 3+806.992
 PI Y 205283.333 X 499659.169
 PC STA. 3+789.622
 PI STA. 3+824.355
 TAN 17.370 m (56.99')
 Radius 700.000 m (2296.59')
 DEG 2°29'41.4"
 DELTA -2°50'34.4"
 LENGTH 34.733 m (113.95')

PI STA. 4+966.10
 PI Y 206442.221 X 499670.405
 PC STA. 4+897.786
 PT STA. 5+033.705
 TAN 68.334 m (224.19')
 Radius 530.000 m (1738.85')
 DEG 3°17'42"
 DELTA 14°41'37"
 LENGTH 135.919 m (445.93')

PI STA. 4+324.554
 PI Y 205800.783 X 499667.845
 PC STA. 4+314.641
 PT STA. 4+334.451
 TAN 9.913 m (32.52')
 Radius 210.000 m (688.98')
 DEG 8°18'58"
 DELTA -5°24'18"
 LENGTH 19.810 m (64.99')

PI STA. 5+240.511
 PI Y 206706.798 X 499745.914
 PC STA. 5+115.927
 PT STA. 5+362.440
 TAN 124.585 m (408.74')
 Radius 690.000 m (2263.78')
 DEG 2°31'52"
 DELTA 20°28'11"
 LENGTH 246.513 m (808.77')

REV. DATE: 6-29-99 PLOT SCALE: 6922.025712:1:000000 PLOT DATE: 29-JUN-1999 13:08
 FILE NAME: 05 #530 5252412.dgn ORIGINATOR: R.L.P.
 LEVELS ON: 1, 2, 3, 4, 5, 6, 7, 8, 9, 10, 11, 12, 13, 14, 15, 16, 17, 18, 19, 20, 21, 22, 23, 24, 25, 26, 27, 28, 29, 30, 31, 32, 33, 34, 35, 36, 37, 38, 39, 40, 41, 42, 43, 44, 45, 46, 47, 48, 49, 50, 51, 52, 53, 54, 55, 56, 57, 58, 59, 60, 61, 62, 63

REVISION DATE	DATE	SCALE, METERS 0 _____ N/A	HWY: U.S.H. 53	FEDERAL PROJECT NO:	
	GRID FACTOR N/A		COUNTY: LA CROSSE	STATE R/W PROJECT NO: 5252-09-21	SHEET NO: 4.15 M