

Clark

REVISION DATE	ROUTE CTH "C"	COUNTY LA CROSSE	DATE	R/W PROJECT NUMBER 7048-02-21	SHEET NUMBER
	SCALE, FT. 0 50 100	GRID FACTOR		APPROVED FOR LA CROSSE COUNTY	
			12-23-91	<i>Ronald Buelckow</i> COUNTY HIGHWAY COMMISSIONER	

### SCHEDULE OF LANDS & INTERESTS REQUIRED

PARCEL NUMBER	OWNER	INTEREST REQUIRED	TOTAL ACRES OR S.F.	R/W ACRES REQUIRED OR S.F.			TOTAL ACRES REM.	T.L.E. P.L.E.	
				NEW	EXISTING	TOTAL			
1	SIDNEY AND RUBY HETLAND	FEE & T.L.E.	37.01	0.03	0.29	0.32	36.69	0.09	---
2	LEANN L. KRAMER	P.L.E. & T.L.E.	38.57	---	---	---	38.57	0.12	0.01

**LEGEND**

- SET 5/8" O.D. IRON BARS WEIGHING 1.04 LBS/L.F.

NOTE: BEARINGS DETERMINED BY SOLAR OBSERVATION



PEN TABLE = ppsht.tbl  
DATE OF PLOT = 12/20/91  
DESIGN FILE = 1552r.w.dgn  
DGN LEVELS ON = 1-63

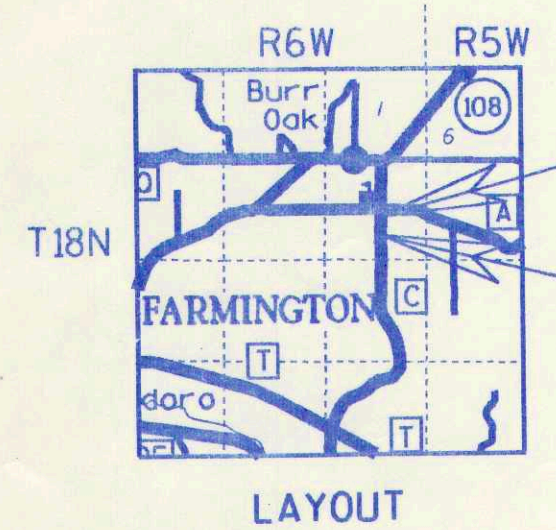
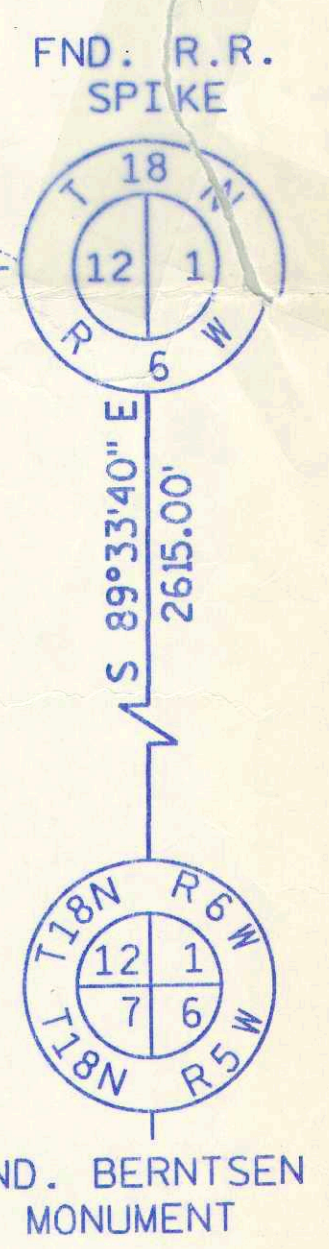
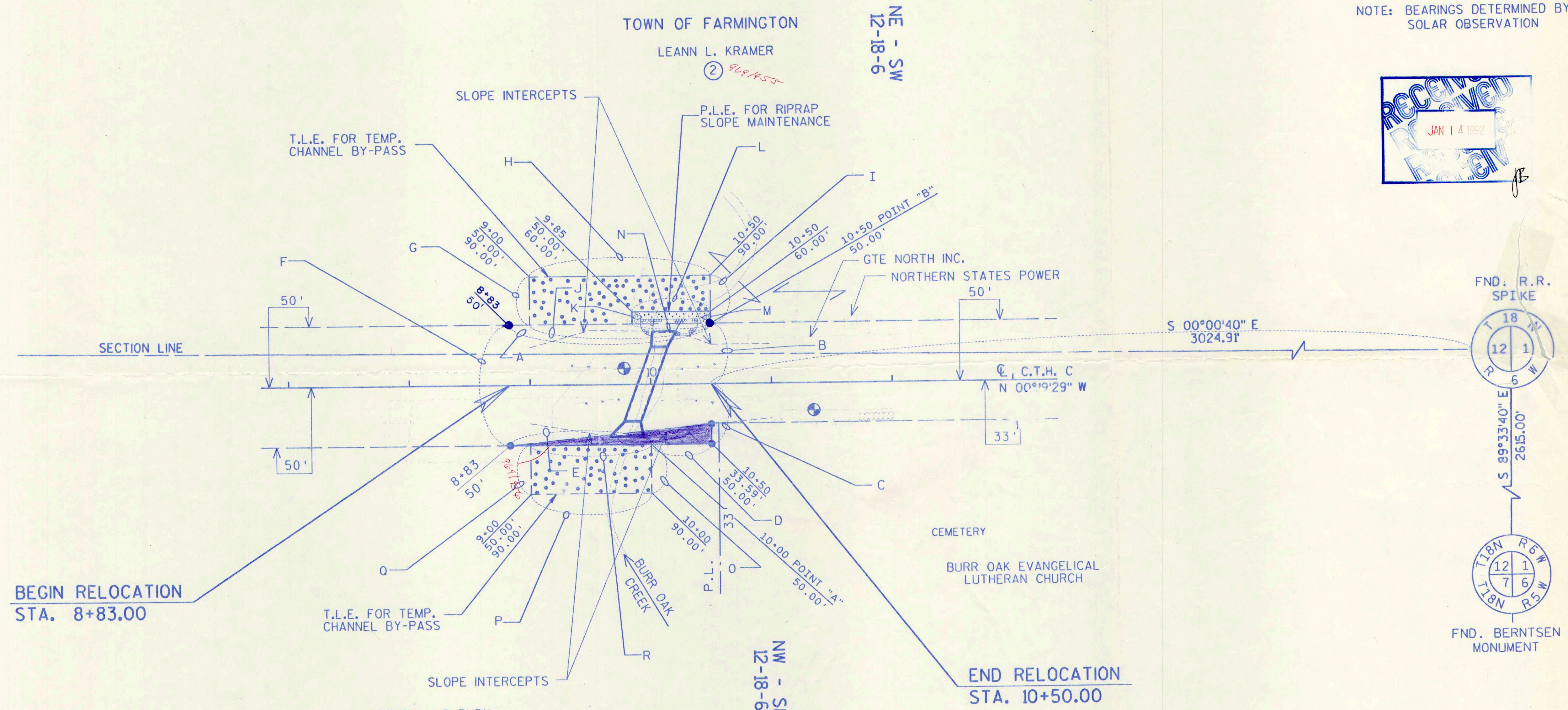
laor.dgn ON = 1-17, 19-63

1552pp.dgn ON = 1-63  
1552et.dgn ON = 1-63

1552pp.dgn ON = 1-63  
1552et.dgn ON = 1-63

ORIGINATOR:  
DATE:  
SCALE:  
FILE NAME:

COURSE	BEARING	DISTANCE
A	N 00°19'29"W	167.00'
B	N 89°40'31"E	50.00'
C	N 89°40'31"E	50.00'
D	S 00°19'29"E	50.00'
E	S 00°19'29"E	117.00'
F	S 89°40'31"W	100.00'
G	S 89°40'31"W	40.00'
H	N 00°19'29"W	150.00'
I	N 89°40'31"E	40.00'
J	S 00°19'29"E	150.00'
K	S 89°40'31"W	10.00'
L	N 00°19'29"W	65.00'
M	N 89°40'31"E	10.00'
N	S 00°19'29"E	65.00'
O	N 89°40'31"E	40.00'
P	S 00°19'29"E	100.00'
Q	S 89°40'31"W	40.00'
R	N 00°19'29"W	100.00'



**END RELOCATION**  
STA. 10+50.00  
3024.91' SOUTH AND 0.58' EAST OF THE NORTH QUARTER CORNER OF SECTION 12, T18N, R6W.

**BEGIN RELOCATION**  
STA. 8+83.00  
3191.90' SOUTH AND 1.53' EAST OF THE NORTH QUARTER CORNER OF SECTION 12, T18N, R6W.

NET LENGTH OF CENTERLINE = STA 8+83.00 TO STA 10+50.00 = 167.00 LIN. FT.

8

SURVEY AT THE REQUEST OF LA CROSSE COUNTY HIGHWAY COMMISSION. SURVEY PERFORMED MAY 1, 1990 IS ACCURATE TO THE BEST OF MY KNOWLEDGE AND BELIEF.

DATED THIS 22 DAY OF November, 1991.

*Evelyn L. Ferneding*  
EVELYN L. FERNEDING, R.L.S.

