

R/W PROJECT NUMBER 7190-04-21	SHEET NUMBER 4.01	TOTAL SHEETS 8
FEDERAL PROJECT NUMBER		
PLAT OF RIGHT-OF-WAY REQUIRED FOR 2ND AVE. CITY OF ONALASKA OAK FOREST DRIVE INTERSECTION		
S <sup>TH</sup> 35		LACROSSE COUNTY
CONSTRUCTION PROJECT NUMBER 7190-04-71		

**CONVENTIONAL SIGNS AND ABBREVIATIONS**

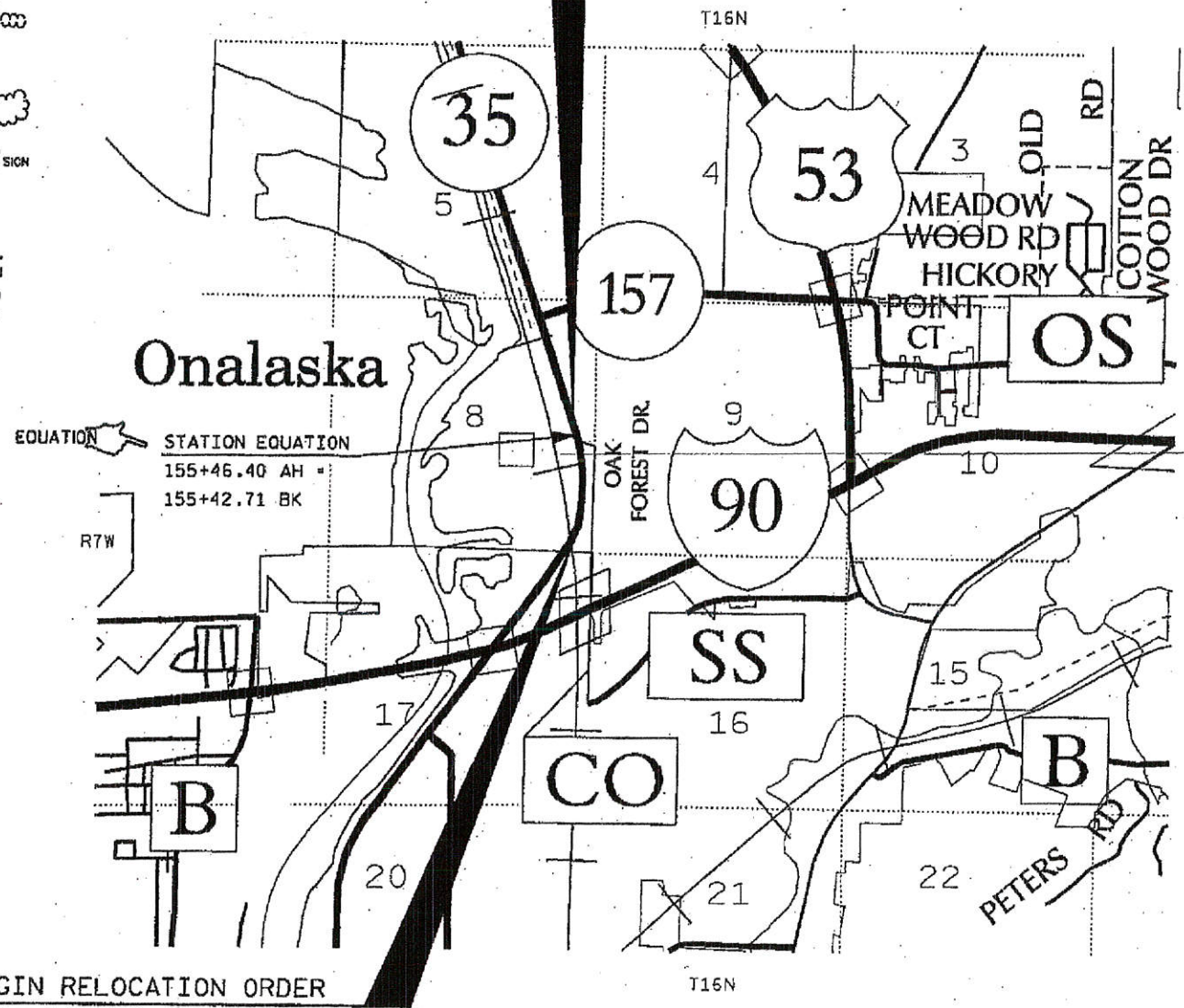
STATE LINE	-----	SECTION CORNER		FOUNDATION OR RUIN BUILDING	
COUNTY LINE	-----	NOTATION FOR COMBUSTIBLE FLUIDS		CEMETERY	
TOWNSHIP AND RANGE LINES	-----	BRIDGE		R/W MONUMENT NON-MONUMENTED R/W POINT	
SECTION LINE	-----	STREAM OR RIVER		IRON PIN	
QUARTER LINE	-----	LAKE		VALVE	
SIXTEENTH LINE	-----	CULVERT (BOX, PIPE OR CATTLE PASS)		WINDMILL	
NEW REFERENCE LINE	-----	RAIL LINE		SILO, MANHOLE, VENT, SEPTIC VENT, WELL, ETC.	
NEW R/W LINE	-----	SIGN		GAS PUMPS	
EXISTING R/W LINE	-----	ENCROACHING SIGN		BUSHES	
PROPERTY LINE	-----	POWER POLE		TREES (DECIDUOUS) (CONIFEROUS)	
CORPORATE LIMITS	-----	TELEPHONE POLE		WOODS	
LOT, TIE AND OTHER MINOR LINES	-----	NO ACCESS (BY ACQUISITION)		ENCROACHING SIGN	
SLOPE INTERCEPTS	-----	NO ACCESS (BY STATUTORY AUTHORITY)			
UNDERGROUND FACILITY (GAS, TELEPHONE, ELECTRIC, ETC.)	-----	NO ACCESS (BY PREVIOUS PROJECT)			
FENCE	-----	TELEPHONE CABLE MARKER			
TEMPORARY LIMITED EASEMENT	-----				
PERMANENT LIMITED EASEMENT	-----				
BEAM GUARD	-----				
TRANSMISSION STRUCTURE AND LINE	-----				
PEDESTAL	-----				
NOTATION FOR 69KV ELECTRICAL LINE	-----				
BUILDING TO BE ACQUIRED					
PRIVATE DRIVE	PD	STORM SEWER	SS		
ACRES	AC	LONG CHORD BEARING	LCB		
AHEAD	AH	MONUMENT	MON		
AND OTHERS	ET AL	PARKER-KALON FASTENER	PK		
BACK	BK	PROPERTY LINE	PL		
BARN	B	RADIUS	R		
CENTERLINE	C	RIGHT OF WAY	R/W		
CENTRAL ANGLE	Δ	SECTION	SEC		
CONCRETE	CONC	SHED	S		
CORNER	COR	SQUARE FEET	S.F.		
GARAGE	G	STATION	STA		
HOUSE	H	TANGENT	T		
LENGTH	L	TEMPORARY LIMITED EASEMENT	TLE		
LONG CHORD	LC	TRANSIT LINE	T		
OVERHEAD UTILITIES	OHU	OVERHEAD ELECTRIC	OHE		
FORCE MAIN	FM	SANITARY SEWER	SAN		
ACCESS RIGHTS	AR				

GN



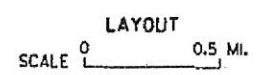
**END RELOCATION ORDER**

STA. 156+00  
551.53' WEST OF AND 219.93' NORTH OF THE  
EAST 1/4 CORNER, SECTION 8, T16N, R7W.



**BEGIN RELOCATION ORDER**

STA. 149+50  
74.74' WEST OF AND 1179.20' SOUTH OF THE  
EAST 1/4 CORNER OF SECTION 8, T16N, R7W.



TOTAL NET LENGTH OF CENTERLINE = 0.1224 MI.



**NOTES**

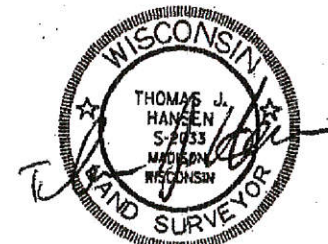
COORDINATES AND BEARINGS ON THIS PLAT ARE ORIENTED TO THE WISCONSIN COUNTY COORDINATE SYSTEM, LACROSSE COUNTY ZONE, NAD 83 (1991) ADJUSTMENT. THE COORDINATES SHOWN ARE GRID COORDINATES AND ARE TO BE USED AS GRID OR GROUND VALUES ON THIS PLAT.

RIGHT-OF-WAY MONUMENTS ARE TYPE 2 AND WILL BE PLACED PRIOR TO THE COMPLETION OF THE PROJECT.

RIGHT-OF-WAY BOUNDARIES ARE DEFINED WITH COURSES OF THE PERIMETER OF THE HIGHWAY LANDS REFERENCED TO THE U.S. PUBLIC LAND SURVEY SYSTEM OR OTHER SURVEYS OF PUBLIC RECORD.



HEREBY CERTIFY THAT THIS PLAT WAS MADE FOR THE WISCONSIN DEPARTMENT OF TRANSPORTATION AND IS CORRECT TO THE BEST OF MY KNOWLEDGE AND BELIEF.



March 17, 2005

APPROVED BY  
CITY OF ONALASKA

REVISION DATE  
**94**

DATE: \_\_\_\_\_ CITY REPRESENTATIVE SIGNATURE \_\_\_\_\_

**E**

# SCHEDULE OF LANDS & INTERESTS REQUIRED

AREAS SHOWN IN THE TOTAL S.F. COLUMN MAY BE APPROXIMATE AND ARE DERIVED FROM TAX ROLLS OR OTHER AVAILABLE SOURCES AND MAY NOT INCLUDE LANDS OF THE OWNER WHICH ARE NOT CONTIGUOUS TO THE AREA TO BE ACQUIRED.

AREAS SHOWN IN THE TOTAL ACRES COLUMN MAY BE APPROXIMATE AND ARE DERIVED FROM TAX ROLLS OR OTHER AVAILABLE SOURCES AND MAY NOT INCLUDE LANDS OF THE OWNER WHICH ARE NOT CONTIGUOUS TO THE AREA TO BE ACQUIRED.

## SCHEDULE OF LANDS & INTERESTS REQUIRED

PARCEL NUMBER	SHEET NUMBER	OWNER (S)	INTEREST REQUIRED	TOTAL S.F.	R/W S.F. REQUIRED			TOTAL S.F. REM.	TLE S.F.
					NEW	EXISTING	TOTAL		
1	4.04	HRZ PARTNERSHIP 1439788	FEE, TLE	44857	1879	---	1879	42988	1723
2	4.04	LACROSSE COUNTY	FEE	11761	6237	---	6237	5524	---
3	4.04	CITY OF ONALASKA	FEE	114184	168	---	168	114016	---
4	4.04, 4.05, 4.07	VIRGINIA B. MANNSTEDT 1443659	FEE, TLE	41033	10793	---	10793	30240	5891
5	4.04, 4.05	JAE MOBILE HOME PARKS, LLC 1439789	FEE, TLE	174576	4320	---	4320	170356	2844
6	4.04, 4.05	CITY OF ONALASKA	FEE	INDETERMINANT	10754	---	10754	INDETERMINANT	---
7	4.04, 4.05	STATE OF WISCONSIN - DEPARTMENT OF NATURAL RESOURCES 1456009	FEE, TLE	30492	4521	---	4521	25971	2374
8	4.04, 4.06	SCHOOL DISTRICT OF ONALASKA Temp.com 1439790	TLE	740520	---	---	---	740520	6912
9	4.04-4.06	CITY OF ONALASKA	FEE	178160	6830	---	6830	171330	---
10	4.07	KINNE HOLDINGS, LLC 1439791	FEE, TLE	38333	292	---	292	38041	2111

11 4.04-4.07 CITY OF ONALASKA WATER & SEWER UTILITY

RELEASE OF RIGHTS *Conveyance of Rights 1431582*

14 4.04, 4.05 CENTURYTEL

RELEASE OF RIGHTS *Conveyance of Rights 1435172*

15 4.04, 4.05 XCEL ENERGY

RELEASE OF RIGHTS *conveyance of Rights 1462739*

19 4.04 CHARTER COMMUNICATIONS

RELEASE OF RIGHTS *Conveyance of Rights 1435171*

REVISION DATE  
AUGUST 1, 2005

DATE MAY 31, 2005

SCALE, FEET

0  N/A

HWY: STH 35

STATE R/W PROJECT NUMBER 7190-04-21

PLAT SHEET NO: 4.02

COUNTY: LACROSSE

CONSTRUCTION PROJECT NUMBER

PS&E SHEET

E

CITY

OF

ONALASKA

SE-NE  
8-16-7

SW-NW  
9-16-7

NE-SE  
8-16-7

NW-SW  
9-16-7



4

4

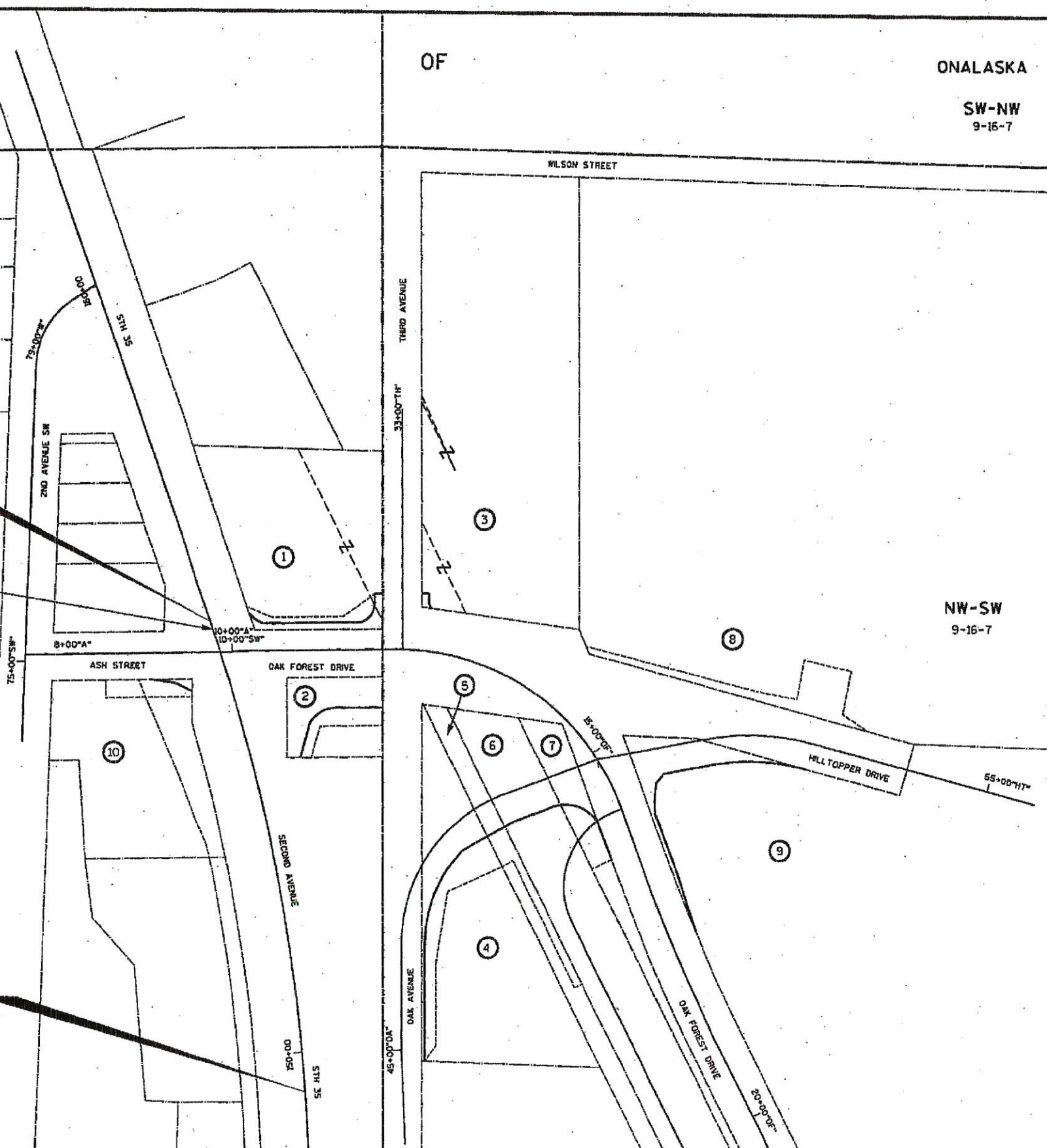
END RELOCATION ORDER

STA. 156+00  
Y = 154780.172  
N = 450646.503

EQUATION STATION EQUATION  
155+46.40 AH =  
155+42.71 BK

BEGIN RELOCATION ORDER

STA. 149+50  
Y = 154152.496  
N = 450791.688



REVISION DATE	DATE	NOT TO SCALE	HWY: STH 35	STATE R/W PROJECT NUMBER 7190-04-21	PLAT SHEET NO: 4.03
			COUNTY: LACROSSE	CONSTRUCTION PROJECT NUMBER	PS&E SHEET

FILE NAME : g:\wdot5\wd500214\w\214r\w03.dgn

PLOT DATE : 25 MAY 2005

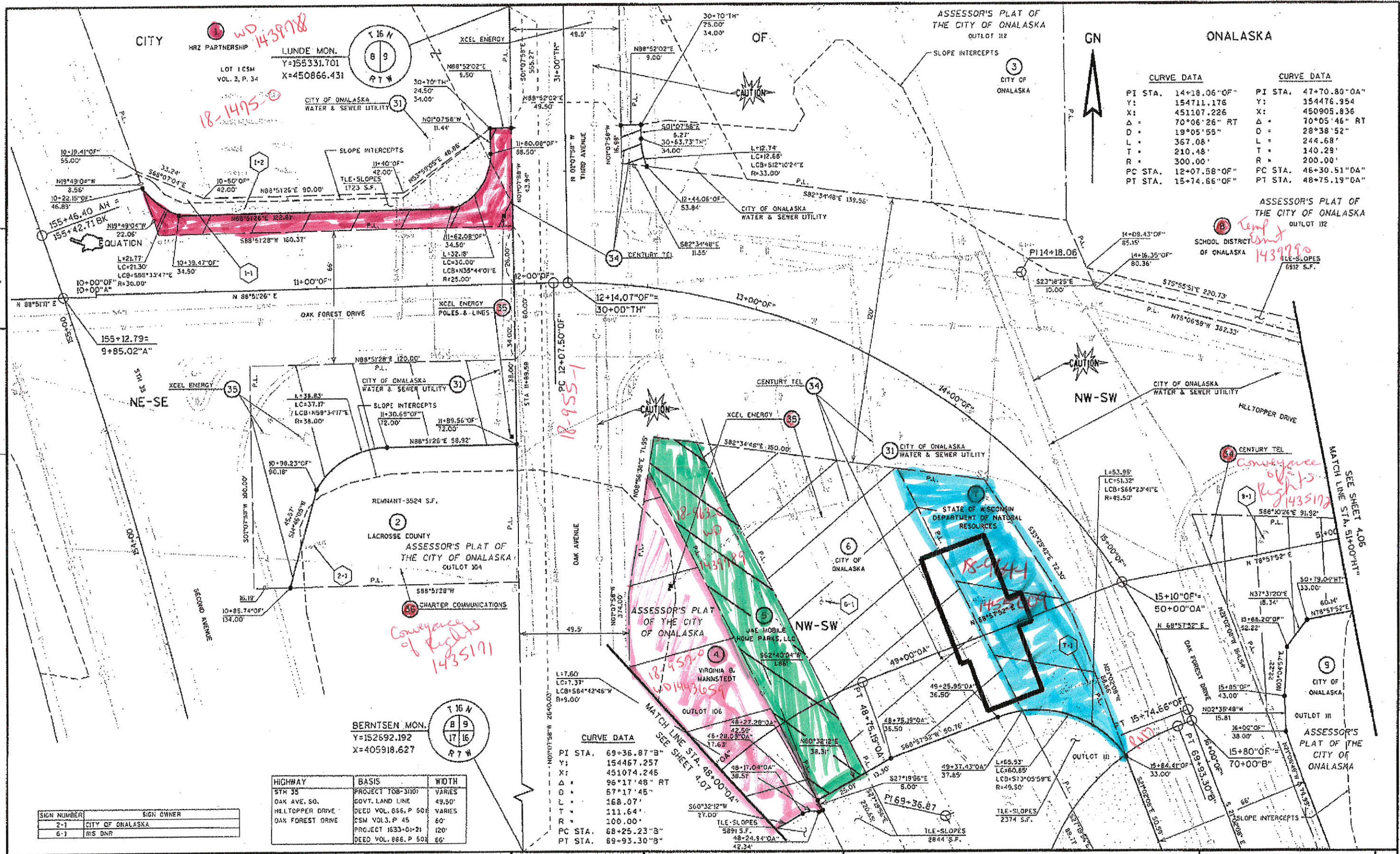
PLOT BY : KL Engineering

PLOT NAME :

PLOT SCALE :

WISDOT/CADDS SHEET TO

E



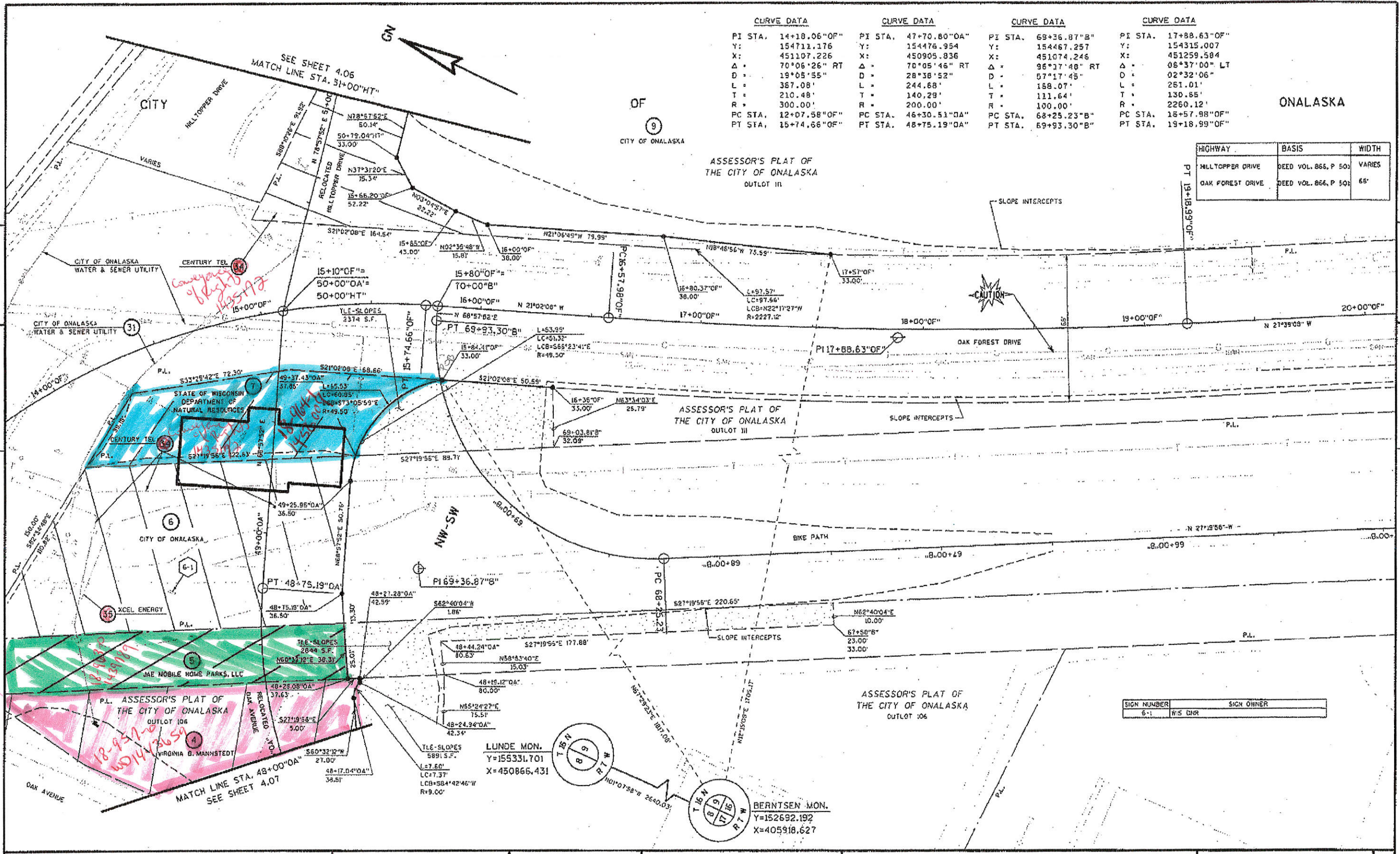
CURVE DATA		CURVE DATA	
PI STA.	14+18.06" OF"	PI STA.	47+70.80" OA"
Y:	154711.176	Y:	154476.954
X:	451107.226	X:	450905.836
Δ =	70°06'26" RT	Δ =	70°05'46" RT
D =	19°05'55"	D =	28°38'52"
L =	367.08'	L =	244.68'
T =	210.48'	T =	140.29'
R =	300.00'	R =	200.00'
PC STA.	12+07.58" OF"	PC STA.	46+30.51" OA"
PT STA.	15+74.66" OF"	PT STA.	48+75.19" OA"

BERNTSEN MON.  
Y=152692.192  
X=405918.627

HIGHWAY	BASIS	WIDTH
STH 35	PROJECT TOB-3100	VARIES
OAK AVE. SO.	GOVT. LAND LINE	49.50'
HILLTOPPER DRIVE	DEED VOL. 656, P. 501	VARIES
OAK FOREST DRIVE	CSM VOL. 3, P. 45	60'
	PROJECT 1633-01-21	120'
	DEED VOL. 666, P. 501	66'

CURVE DATA	
PI STA.	69+36.87" B"
Y:	154467.257
X:	451074.245
Δ =	96°17'48" RT
D =	57°17'45"
L =	168.07'
T =	111.64'
R =	100.00'
PC STA.	68+25.23" B"
PT STA.	69+93.30" B"

REVISION DATE AUGUST 1, 2005	DATE MAY 31, 2005	SCALE, FEET 0 20 40	HWY: STH 35	STATE R/W PROJECT NUMBER 7190-04-21	PLAT SHEET NO: 4.04
GRID FACTOR N/A			COUNTY: LACROSSE	CONSTRUCTION PROJECT NUMBER	PS&E SHEET



CURVE DATA		CURVE DATA		CURVE DATA		CURVE DATA	
PI STA.	14+18.06"OF"	PI STA.	47+70.80"OA"	PI STA.	69+36.87"B"	PI STA.	17+88.63"OF"
Y:	154711.176	Y:	154476.954	Y:	154467.257	Y:	154315.007
X:	451107.226	X:	450905.836	X:	451074.246	X:	451259.584
Δ:	70°06'26" RT	Δ:	70°05'46" RT	Δ:	96°17'48" RT	Δ:	06°37'00" LT
D:	19°05'55"	D:	28°38'52"	D:	57°17'45"	D:	02°32'06"
L:	367.08'	L:	244.68'	L:	158.07'	L:	261.01'
T:	210.48'	T:	140.29'	T:	111.64'	T:	130.85'
R:	300.00'	R:	200.00'	R:	100.00'	R:	2260.12'
PC STA.	12+07.58"OF"	PC STA.	46+30.51"OA"	PC STA.	68+25.23"B"	PC STA.	16+57.98"OF"
PT STA.	15+74.66"OF"	PT STA.	48+75.19"OA"	PT STA.	69+93.30"B"	PT STA.	19+18.99"OF"

HIGHWAY	BASIS	WIDTH
MILTOPPER DRIVE	DEED VOL. 866, P. 50;	VARIES
OAK FOREST DRIVE	DEED VOL. 866, P. 50;	66'

SIGN NUMBER	SIGN OWNER
6-1	W/S DWR

REVISION DATE AUGUST 1, 2005	DATE MAY 31, 2005	SCALE, FEET 0 20 40	HWY: STH 35	STATE R/W PROJECT NUMBER 7190-04-21	PLAT SHEET NO: 4.05
GRID FACTOR N/A			COUNTY: LACROSSE	CONSTRUCTION PROJECT NUMBER	PS&E SHEET E

CITY

OF

ONALASKA

LUNDE MON.  
Y=155331.701  
X=450866.431



*Temp EWT  
1439790*

OUTLOT 112  
ASSESSOR'S PLAT OF  
THE CITY OF ONALASKA

SCHOOL DISTRICT  
OF ONALASKA

SLOPE INTERCEPTS

TILE-DRIVEWAY  
6912 S.F.

NW-SW

CITY OF ONALASKA  
WATER

HIGHWAY	BASIS	WIDTH
HILLTOPPER DRIVE	CEED VOL. 866, P. 501	66'

4

4

GN



MATCH LINE STA. 51+00.00"  
SEE SHEETS 4.04 & 4.05

PC 51+39.17"  
33.00'

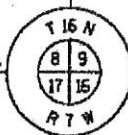
L=120.78  
LC=119.76  
LCB=588°04'33"E  
R=267.00'

OUTLOT 111  
ASSESSOR'S PLAT OF  
THE CITY OF ONALASKA

CURVE DATA

PI STA. 52+08.21"HT"  
 Y: 154611.967  
 X: 451357.633  
 Δ = 25°55'09" RT  
 D = 19°05'55"  
 L = 135.71'  
 T = 69.04'  
 R = 300.00'  
 PC STA. 51+39.17"HT"  
 PT STA. 52+77.88"HT"

BERNTSEN MON.  
Y=152692.192  
X=405918.627



REVISION DATE

DATE

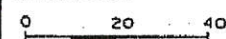
SCALE, FEET

HWY: STH 35

STATE R/W PROJECT NUMBER 7190-04-21

PLAT SHEET NO: 4.06

GRID FACTOR N/A

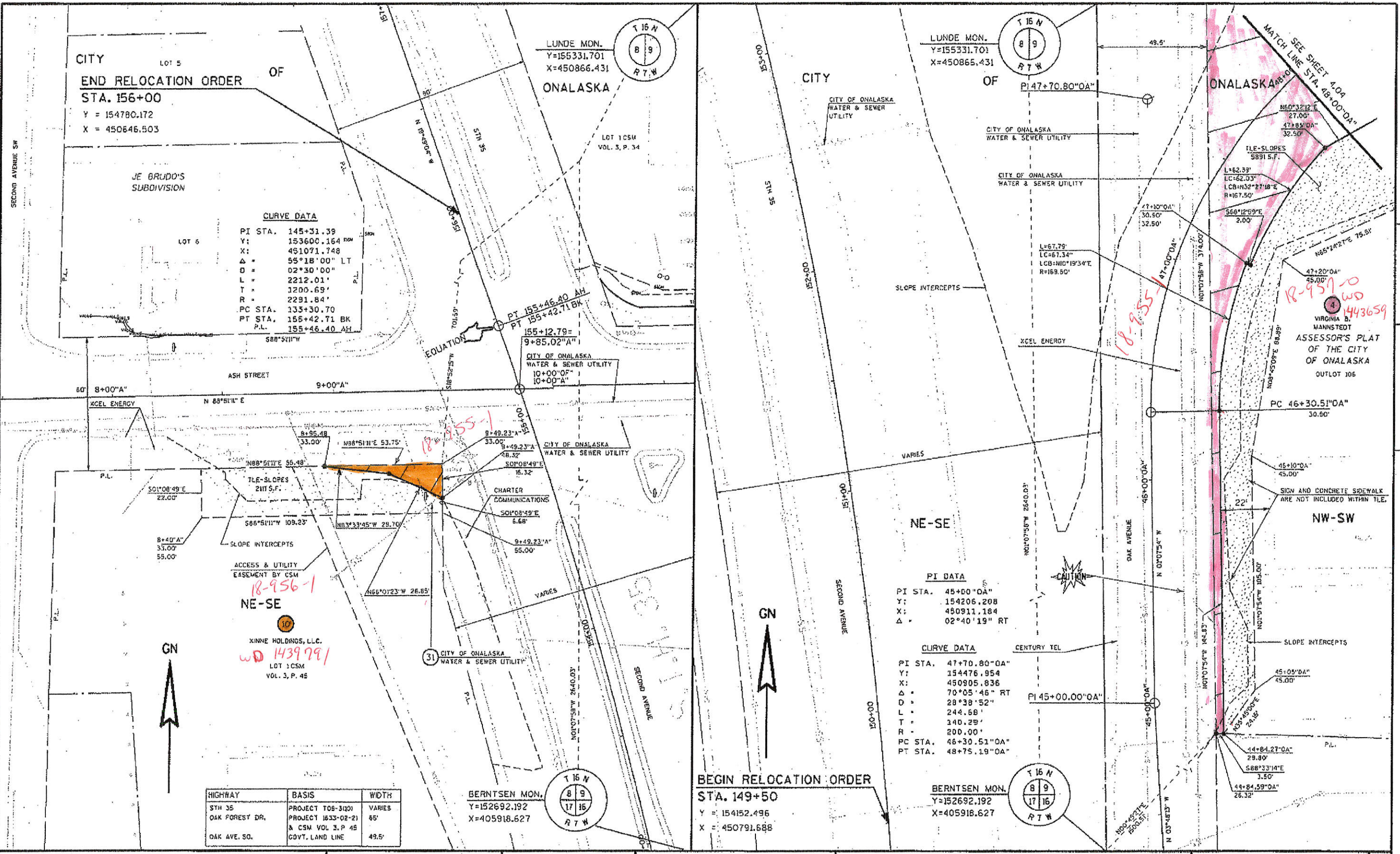


COUNTY: LACROSSE

CONSTRUCTION PROJECT NUMBER

PS&E SHEET

E



CITY OF ONALASKA  
 END RELOCATION ORDER  
 STA. 156+00  
 Y = 154780.172  
 X = 450646.503

**CURVE DATA**

PI STA.	145+31.39
Y:	153600.164
X:	451071.748
Δ	55°18'00" LT
D	02°30'00"
L	2212.01'
T	1200.69'
R	2291.84'
PC STA.	133+30.70
PT STA.	155+42.71
P.L.	155+46.40 AH

LUNDE MON.  
 Y=155331.701  
 X=450866.431

LUNDE MON.  
 Y=155331.701  
 X=450866.431

BEGIN RELOCATION ORDER  
 STA. 149+50  
 Y = 154152.496  
 X = 450791.688

**PI DATA**  
 PI STA. 45+00.00"  
 Y: 154206.208  
 X: 450911.184  
 Δ = 02°40'19" RT

**CURVE DATA**  
 PI STA. 47+70.80"  
 Y: 154476.954  
 X: 450905.836  
 Δ = 70°05'46" RT  
 D = 28°38'52"  
 L = 244.68'  
 T = 140.29'  
 R = 200.00'  
 PC STA. 46+30.51"  
 PT STA. 48+75.19"

HIGHWAY	BASIS	WIDTH
STH 35	PROJECT TOS-3001	VARIES
OAK FOREST DR.	PROJECT 1633-02-21 & CSM VOL 3, P 45	65'
OAK AVE. SO.	GOVT. LAND LINE	49.5'

BERNTSEN MON.  
 Y=152692.192  
 X=405918.627

BERNTSEN MON.  
 Y=152692.192  
 X=405918.627

REVISION DATE AUGUST 1, 2005	DATE MAY 31, 2005	SCALE, FEET 0 20 40	HWY: STH 35	STATE R/W PROJECT NUMBER 7190-04-21	PLAT SHEET NO: 4.07
GRID FACTOR N/A			COUNTY: LACROSSE	CONSTRUCTION PROJECT NUMBER	PS&E SHEET E